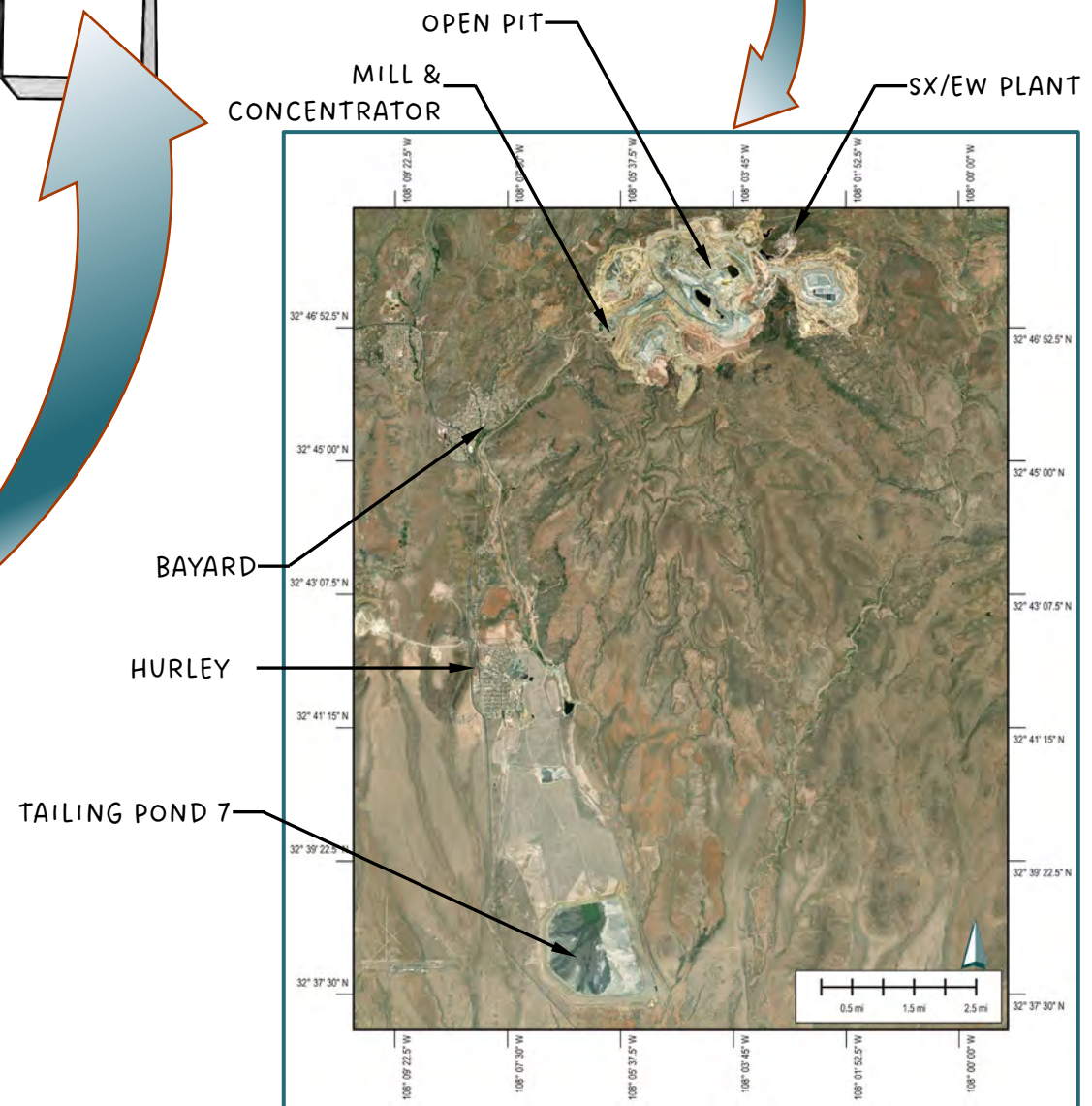
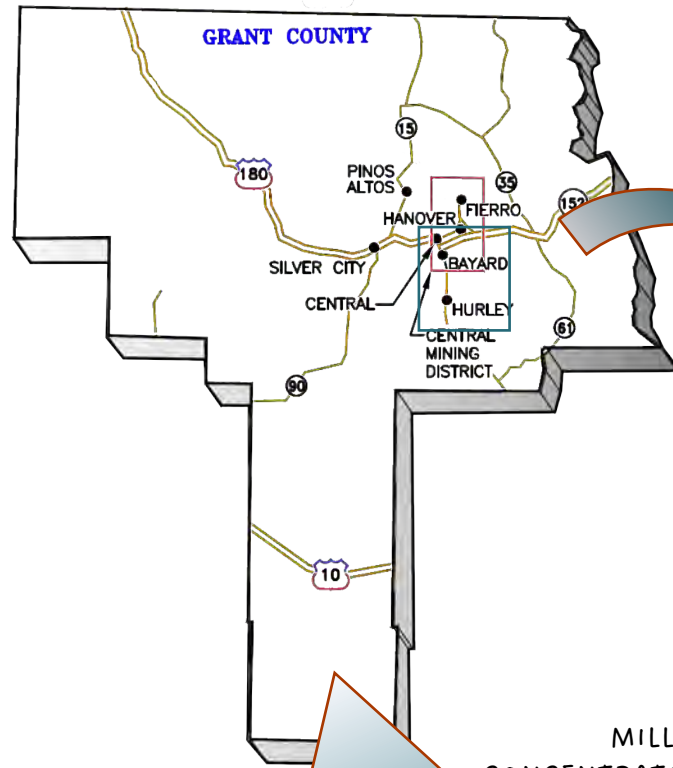
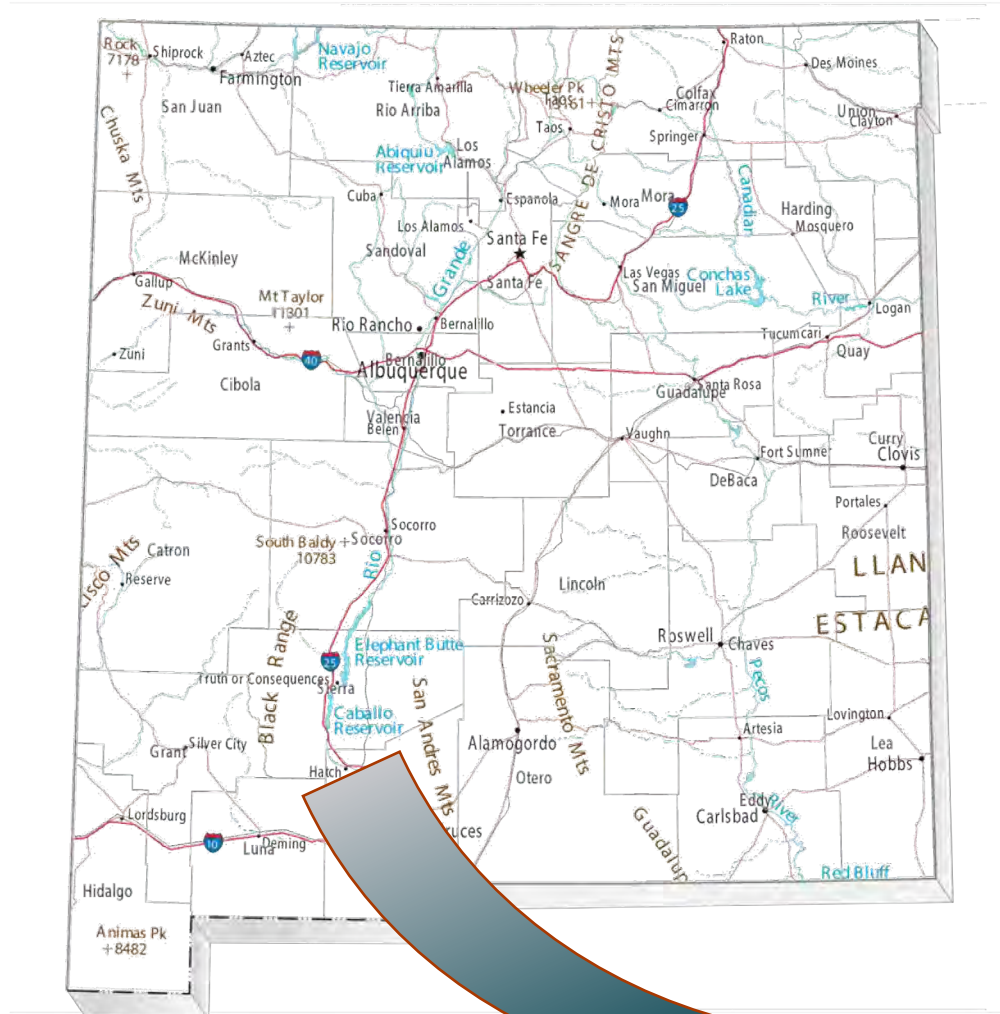


Figures



NOTES:
 AERIAL IMAGERY: ESRI, MAXAR, EARTHSTAR GEOGRAPHICS, AND THE GIS USER COMMUNITY, WORLD IMAGERY 2024

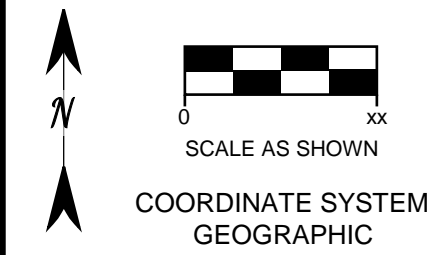
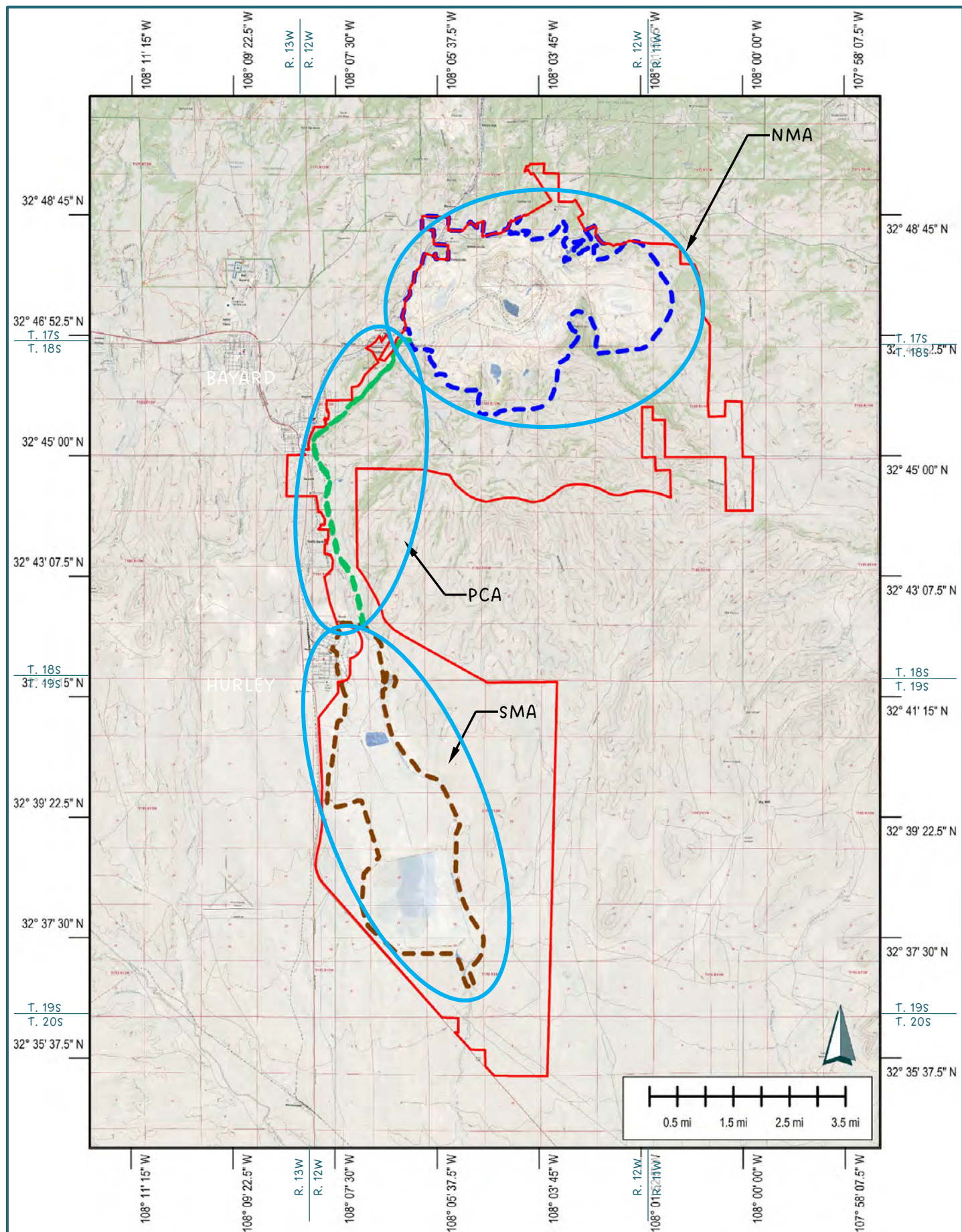


FIGURE 1
CHINO MINE LOCATION

PREPARED BY:
TELESTO
 SOLUTIONS INCORPORATED

PREPARED FOR:
Freeport-McMoRan



GENERAL EXTENTS OF MINE PERMIT BOUNDARY

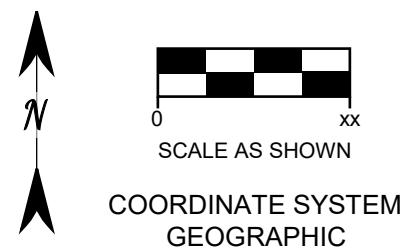
- Township 17 South, Range 11 West: Sections 30 and 31;
- Township 17 South, Range 12 West: Sections 14, 15, 21, 22, 23, 24, 25, 26, 27, 28, 29, 32, 33, 34, 35 and 36
- Township 18 South, Range 13 West: Sections 12 and 13
- Township 18 South, Range 12 West: Sections 1, 2, 3, 4, 5, 6, 7, 8, 9, 10, 11, 12, 13, 14, 15, 16, 17, 18, 19, 29, 30, 31, 32, and 33
- Township 18 South, Range 11 West: Sections 6, 7, 8, 17, 18
- Township 19 South, Range 12 West: Sections 2, 3, 4, 5, 6, 7, 8, 9, 10, 11, 14, 15, 16, 17, 18, 19, 20, 21, 22, 23, 26, 27, 28, 29, 30, 32, 33, 34, and 35
- Township 20 South, Range 12 West: Sections 2, 3, and 4

NOTES:

AERIAL IMAGERY: ESRI, MAXAR, EARTHSTAR GEOGRAPHICS, AND THE GIS USER COMMUNITY, WORLD IMAGERY 2024

QUADRANGLE MAPS: USGS NATIONAL MAP DATABASE

-  MINE PERMIT BOUNDARY
-  APPROX. DESIGN LIMIT BOUNDARY
-  LIMIT BOUNDARY



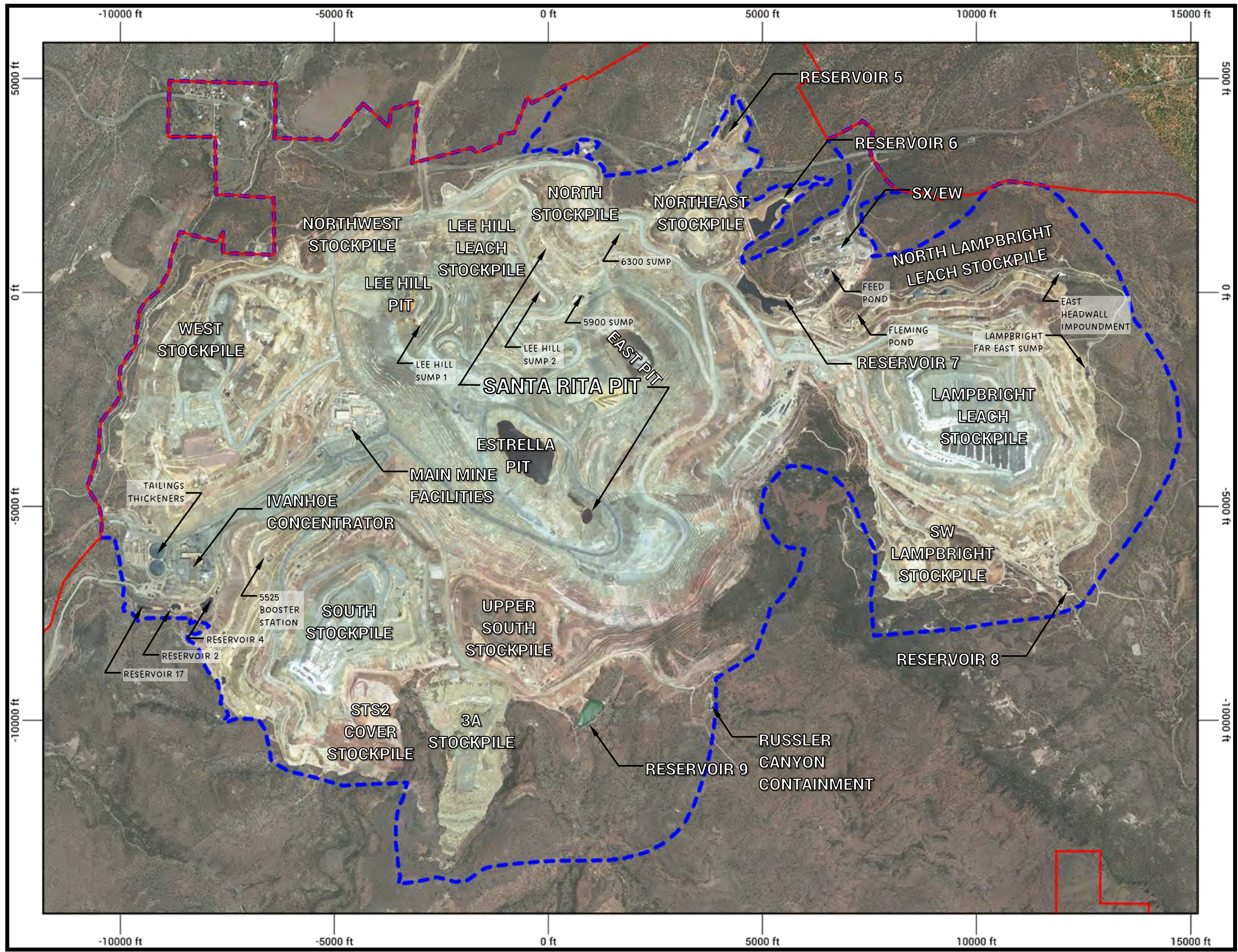
**FIGURE 2
CHINO MINE GENERAL AREAS AND
PERMIT BOUNDARY**

PREPARED BY:



PREPARED FOR:





NOTES:

AERIAL IMAGERY: CHINO MINES
SATELLITE SURVEY, JUNE 26, 2023

--- 2018 DESIGN LIMITS

— MINE PERMIT BOUNDARY

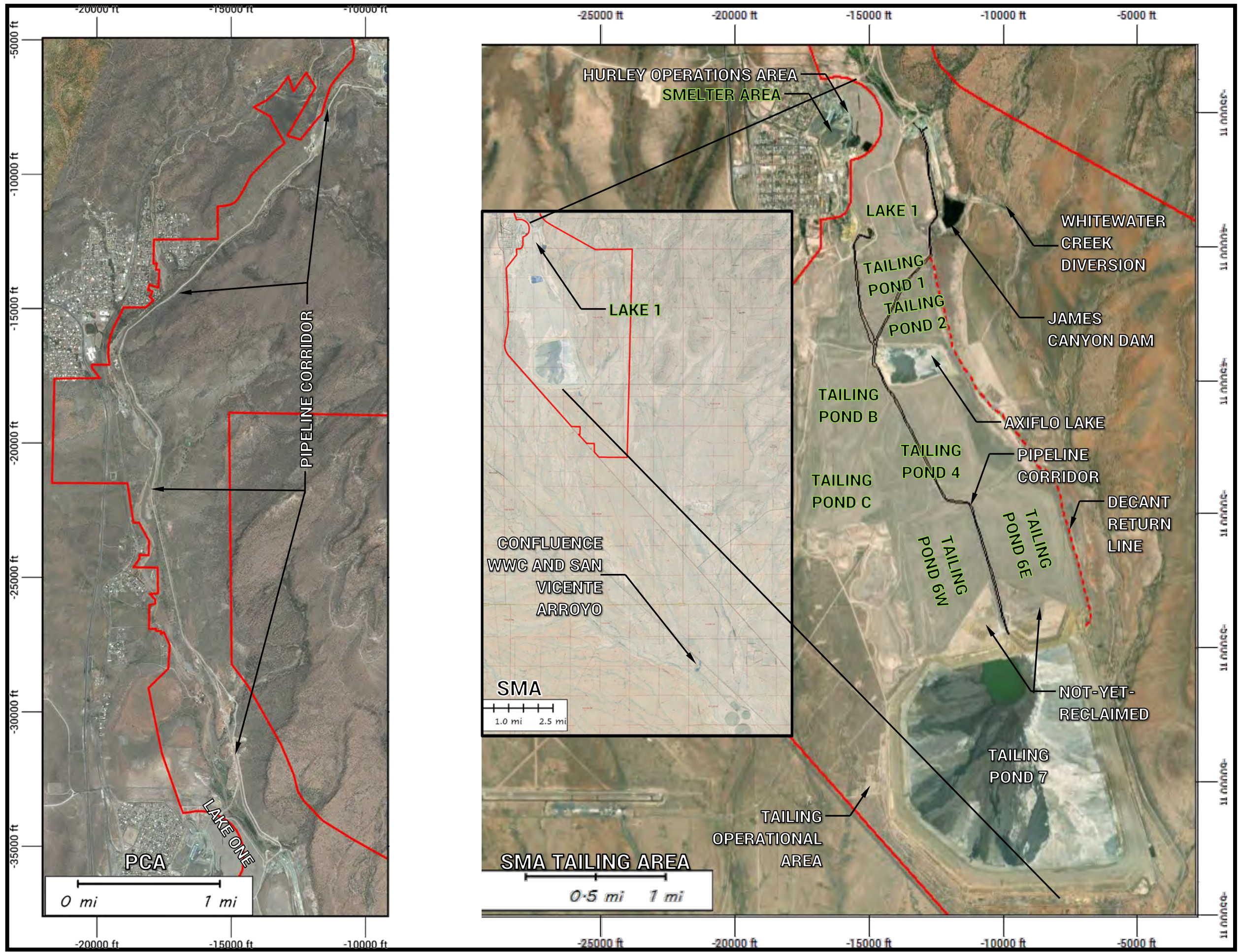
0 2200
SCALE IN FEET

↑ N ↑
COORDINATE SYSTEM
CHINO LOCAL MINE

FIGURE 3
NMA MAJOR FACILITIES

PREPARED BY:
TELESTO
SOLUTIONS INCORPORATED

PREPARED FOR:
Freeport-McMORAN



NOTES:

AERIAL IMAGERY LARGE SCALE:
CHINO MINES SATELLITE SURVEY,
JUNE 26, 2023

AERIAL IMAGERY SMALL SCALE:
ESRI, MAXAR, EARTHSTAR
GEOGRAPHICS, AND THE GIS USER
COMMUNITY, WORLD IMAGERY
2024

TAILING POND RECLAIMED AREA

TAILING POND 7 OPERATIONAL AREA

— MINE PERMIT BOUNDARY

0 XX
SCALE AS SHOWN

COORDINATE SYSTEM
CHINO LOCAL MINE



FIGURE 4
PCA AND SMA MAJOR FACILITIES

PREPARED BY:
TELESTO
SOLUTIONS INCORPORATED

PREPARED FOR:
Freeport-McMoRan



NOTES:
 AERIAL IMAGERY: CHINO MINES
 SATELLITE SURVEY, JUNE 26, 2023

-  FACILITY BOUNDARY
-  UNDER CONSTRUCTION BOUNDARY




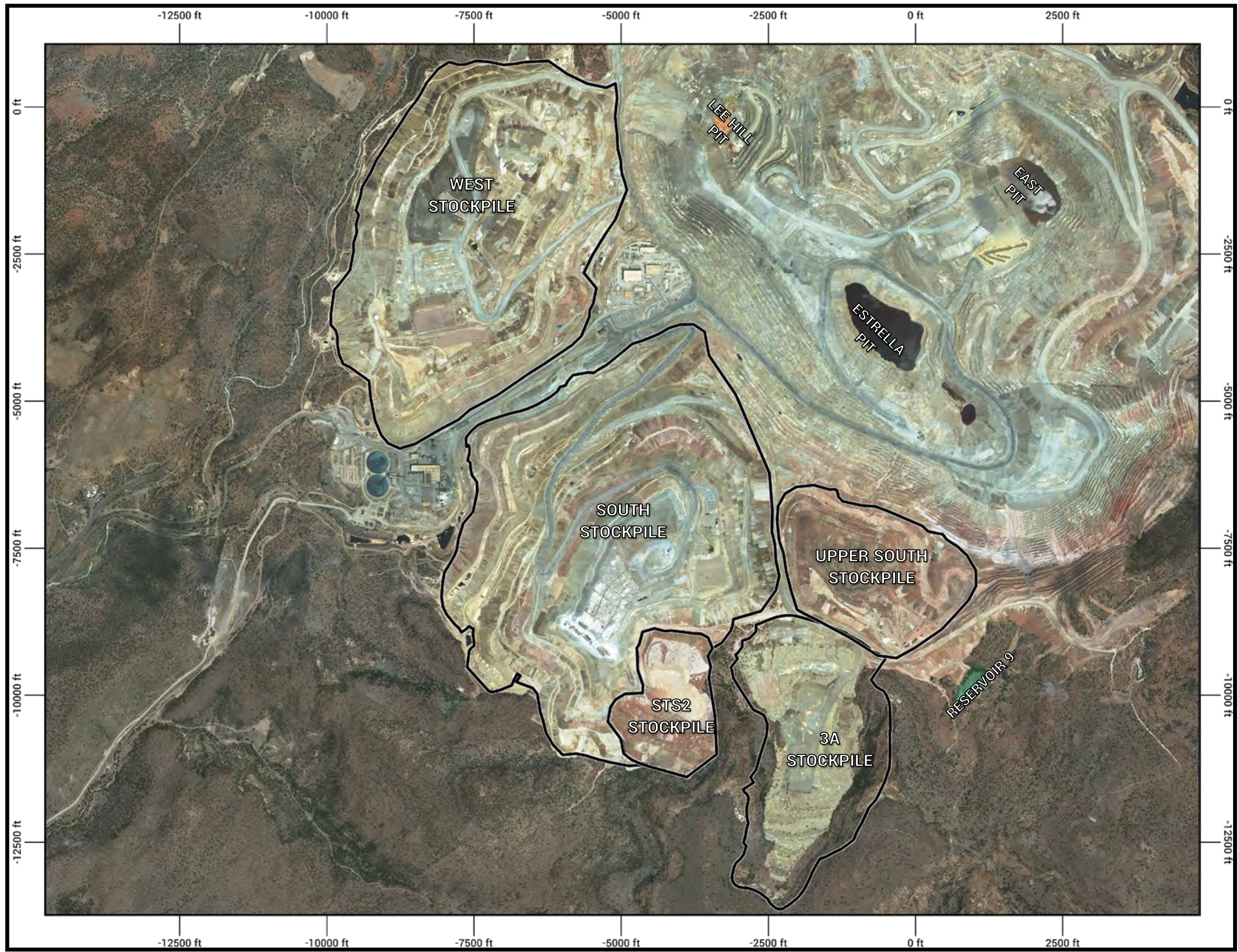



 SCALE IN FEET
 COORDINATE SYSTEM
 CHINO LOCAL MINE

FIGURE 5
LAMPBRIGHT AREA STOCKPILES

PREPARED BY:


PREPARED FOR:

NOTES:
 AERIAL IMAGERY: CHINO MINES
 SATELLITE SURVEY, JUNE 26, 2023

 FACILITY BOUNDARY



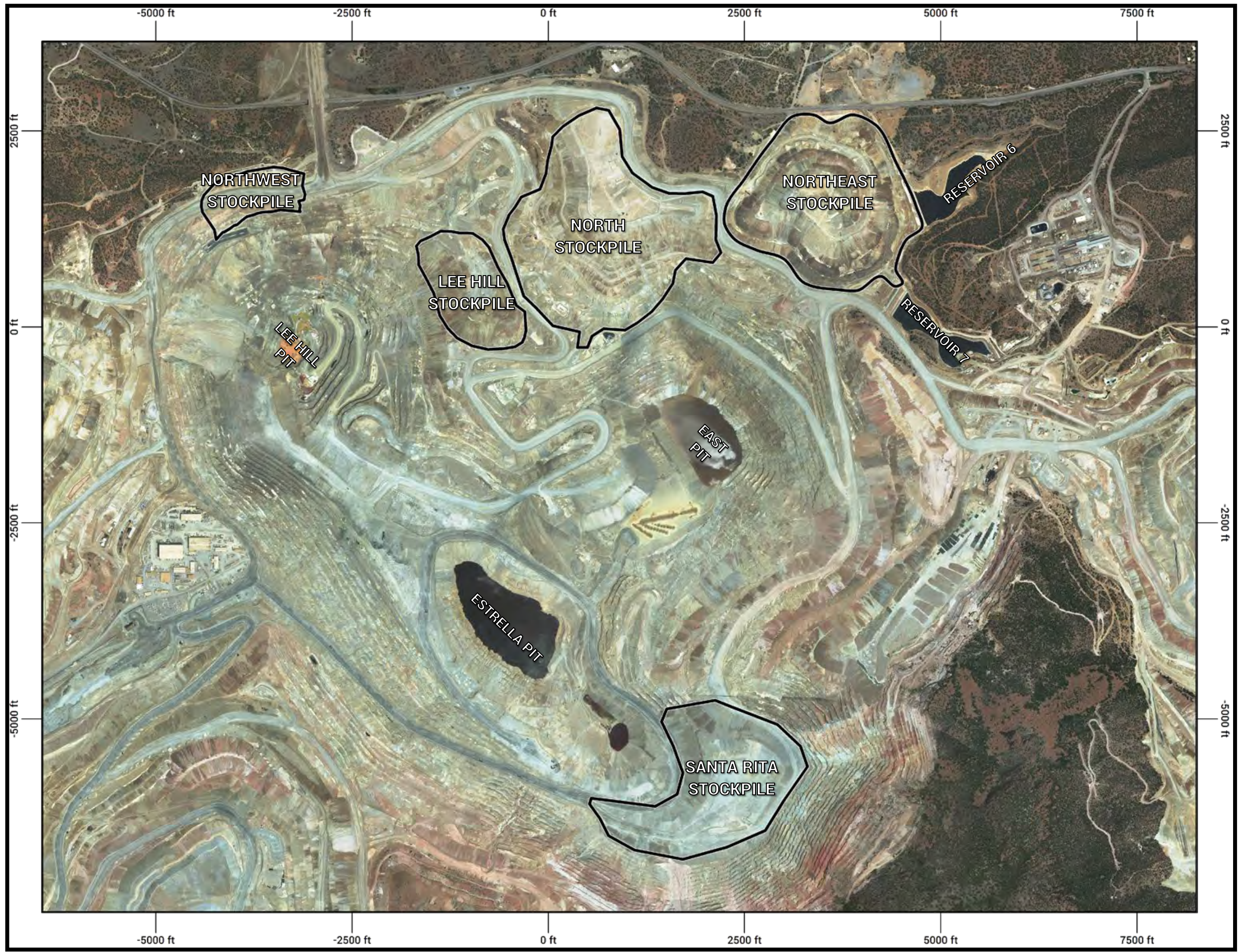

 N

 0 1600
 SCALE IN FEET
 COORDINATE SYSTEM
 CHINO LOCAL MINE

FIGURE 6
 STOCKPILES SOUTH AND WEST OF THE
 SANTA RITA PIT

PREPARED BY:


PREPARED FOR:

NOTES:
 AERIAL IMAGERY: CHINO MINES
 SATELLITE SURVEY, JUNE 26, 2023

 FACILITY BOUNDARY



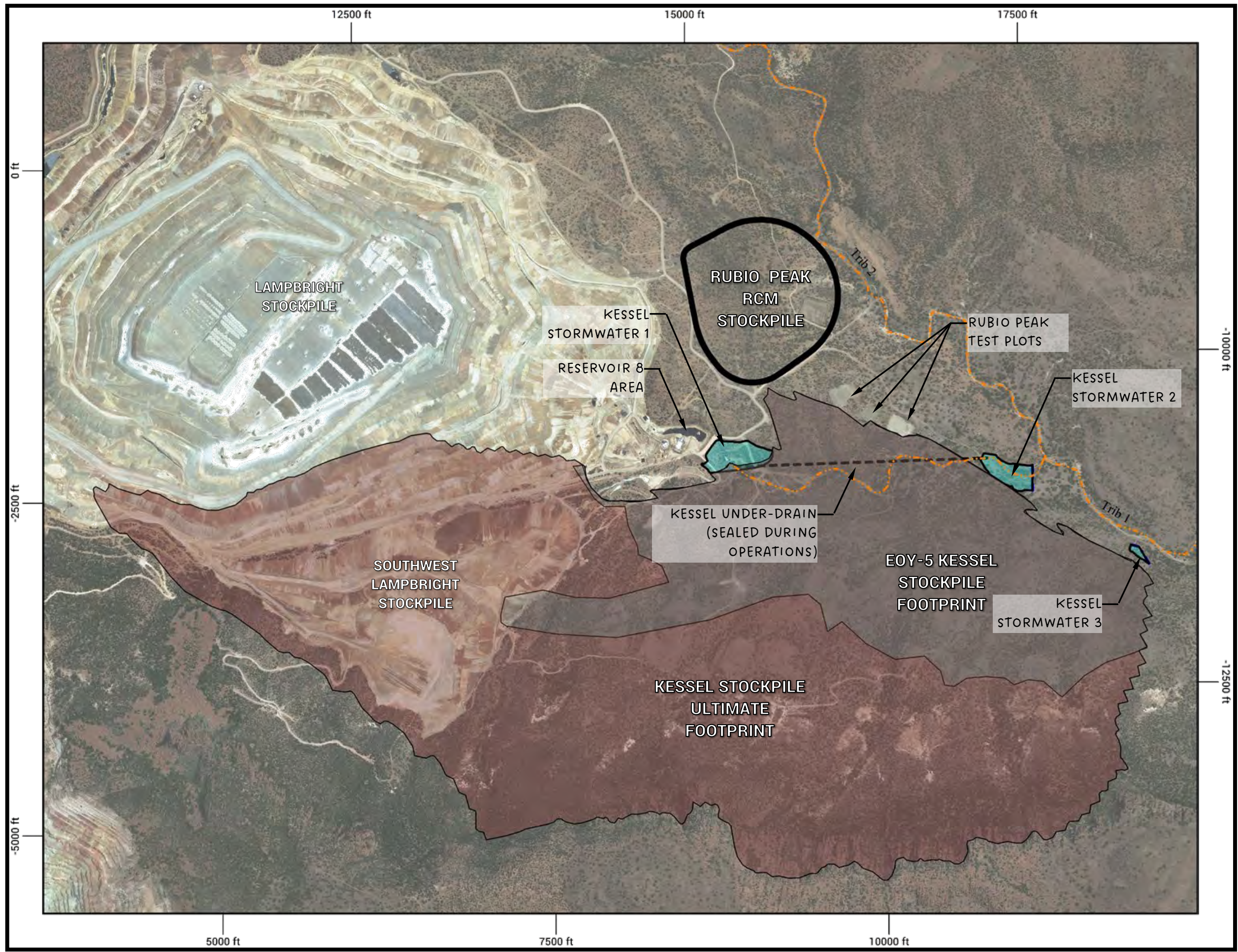

 N

 0 1600
 SCALE IN FEET
 COORDINATE SYSTEM
 CHINO LOCAL MINE




FIGURE 7
IN-PIT STOCKPILES

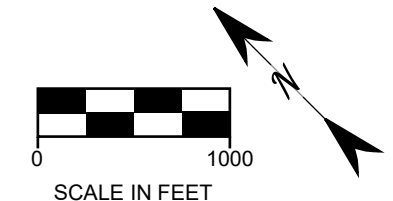
PREPARED BY:
TELESTO
 SOLUTIONS INCORPORATED

PREPARED FOR:
 **FREEPORT-McMoRAN**



NOTES:
 AERIAL IMAGERY: CHINO MINES
 SATELLITE SURVEY, JUNE 26, 2023

-  FACILITY BOUNDARY
-  PROJECTED KESSEL FOOTPRINT (2030)
-  PROJECTED KESSEL FOOTPRINT BEYOND 2030



SCALE IN FEET
 COORDINATE SYSTEM
 CHINO LOCAL MINE



FIGURE 8
 PROPOSED KESSEL STOCKPILE AND
 ASSOCIATED FACILITIES

PREPARED BY:


PREPARED FOR:




NOTES:
 AERIAL IMAGERY: CHINO MINES
 SATELLITE SURVEY, APRIL 21, 2024

-  RECLAMATION FOOTPRINT
(21.4 ACRES)
-  PIPELINE CONTAINMENT
AREA (AOC)




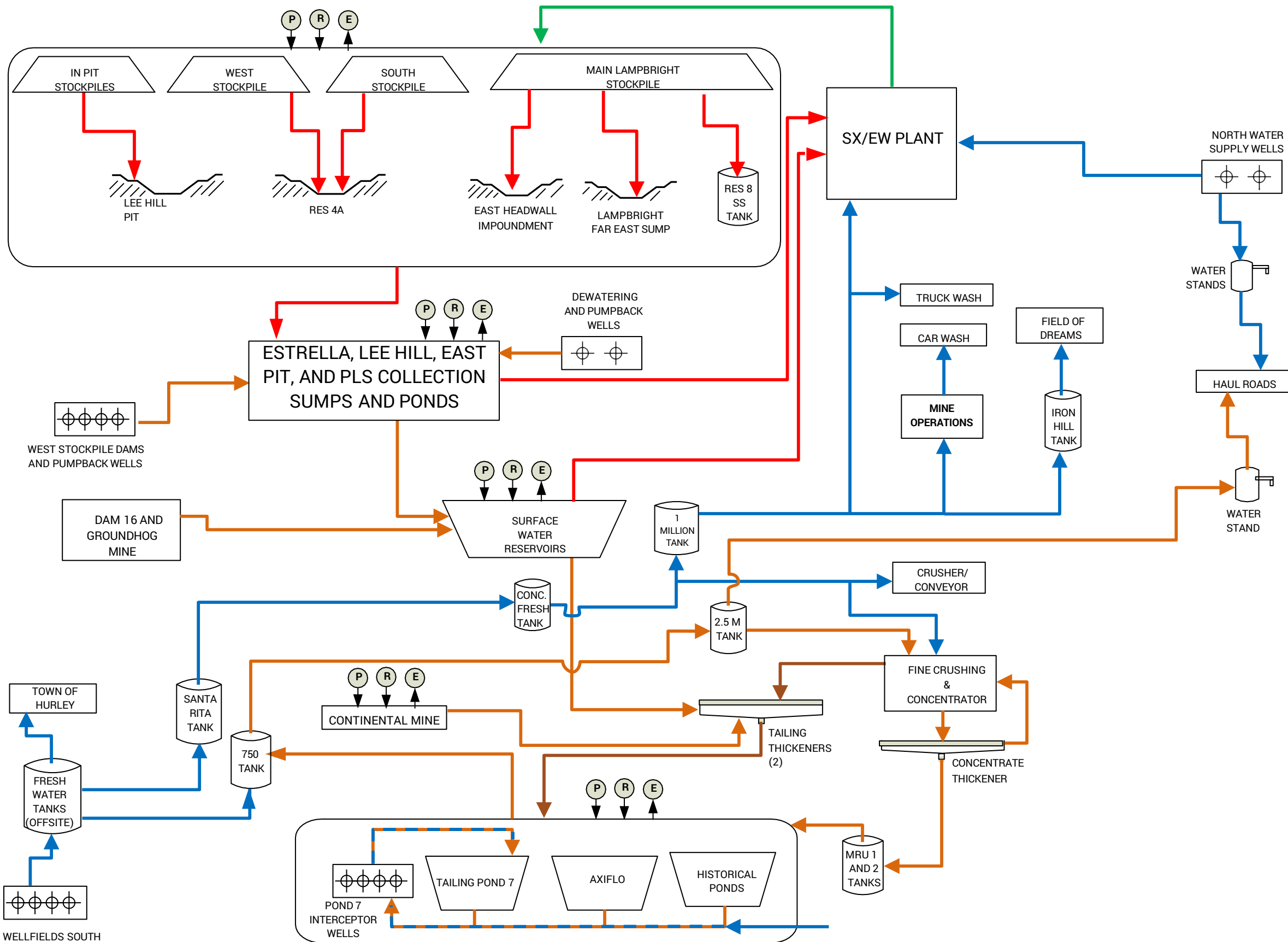



 SCALE IN FEET
 COORDINATE SYSTEM
 CHINO LOCAL MINE

FIGURE 9
GROUNDHOG RECLAMATION AREAS

PREPARED BY:


PREPARED FOR:

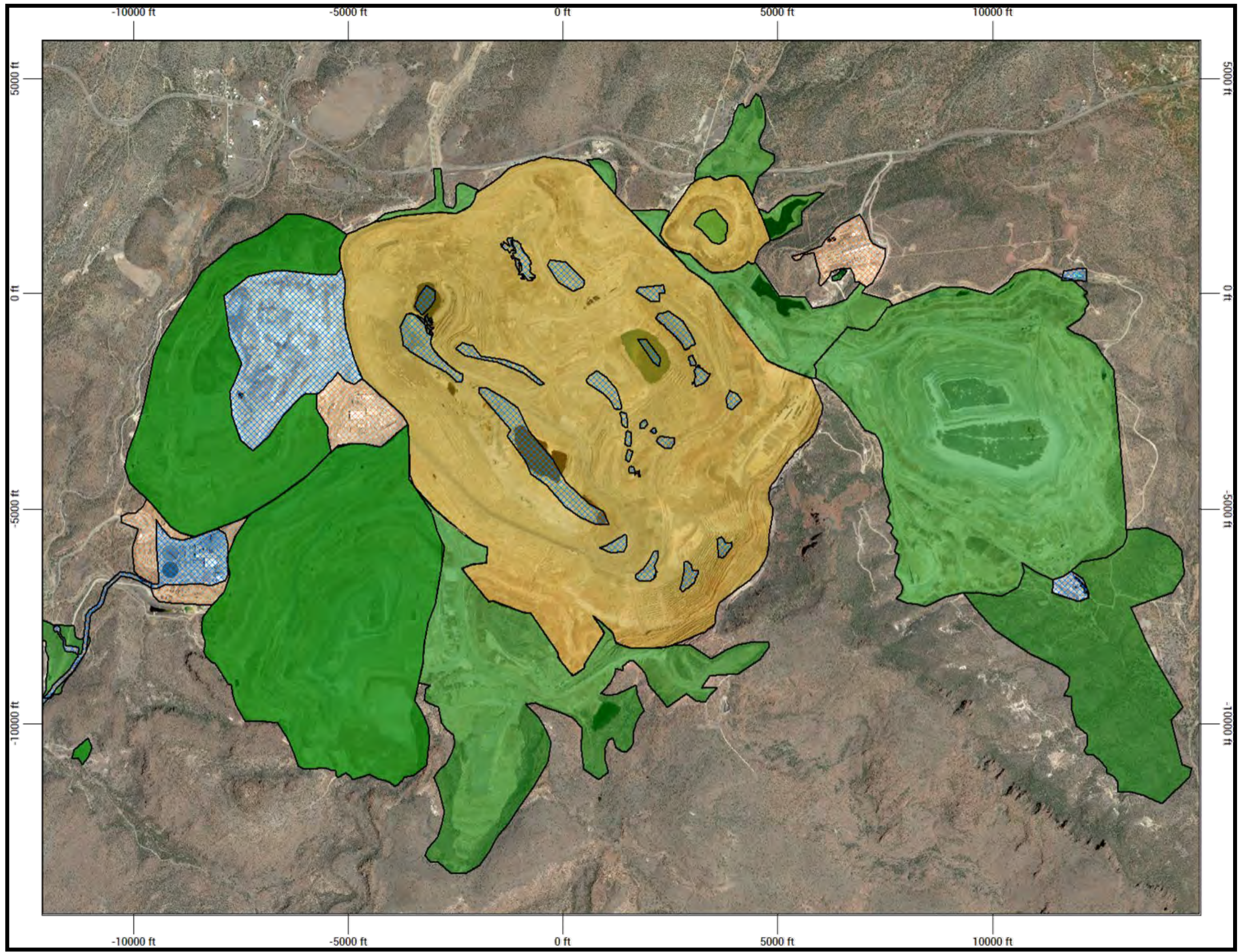



- NOTES:**
- (P) PRECIPITATION
 - (R) RUNOFF
 - (E) EVAPO+TRANSPIRATION
 - Blue arrow: FRESH WATER
 - Orange arrow: PROCESS/CONTACT WATER
 - Green arrow: RAFFINATE
 - Red arrow: PLS
 - Brown arrow: TAILINGS SLURRY
 - Well symbol: WELLS

**FIGURE 10
GENERAL WATER MANAGEMENT
SCHEMATIC**


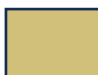


PREPARED BY:
TELESTO
SOLUTIONS INCORPORATED

PREPARED FOR:
Freeport-McMoRAN



NOTES:

AERIAL IMAGERY: CHINO MINES
SATELLITE SURVEY, APRIL 21, 2024

-  WILDLIFE
-  PIT WAIVER
-  INDUSTRIAL
-  WATER MANAGEMENT



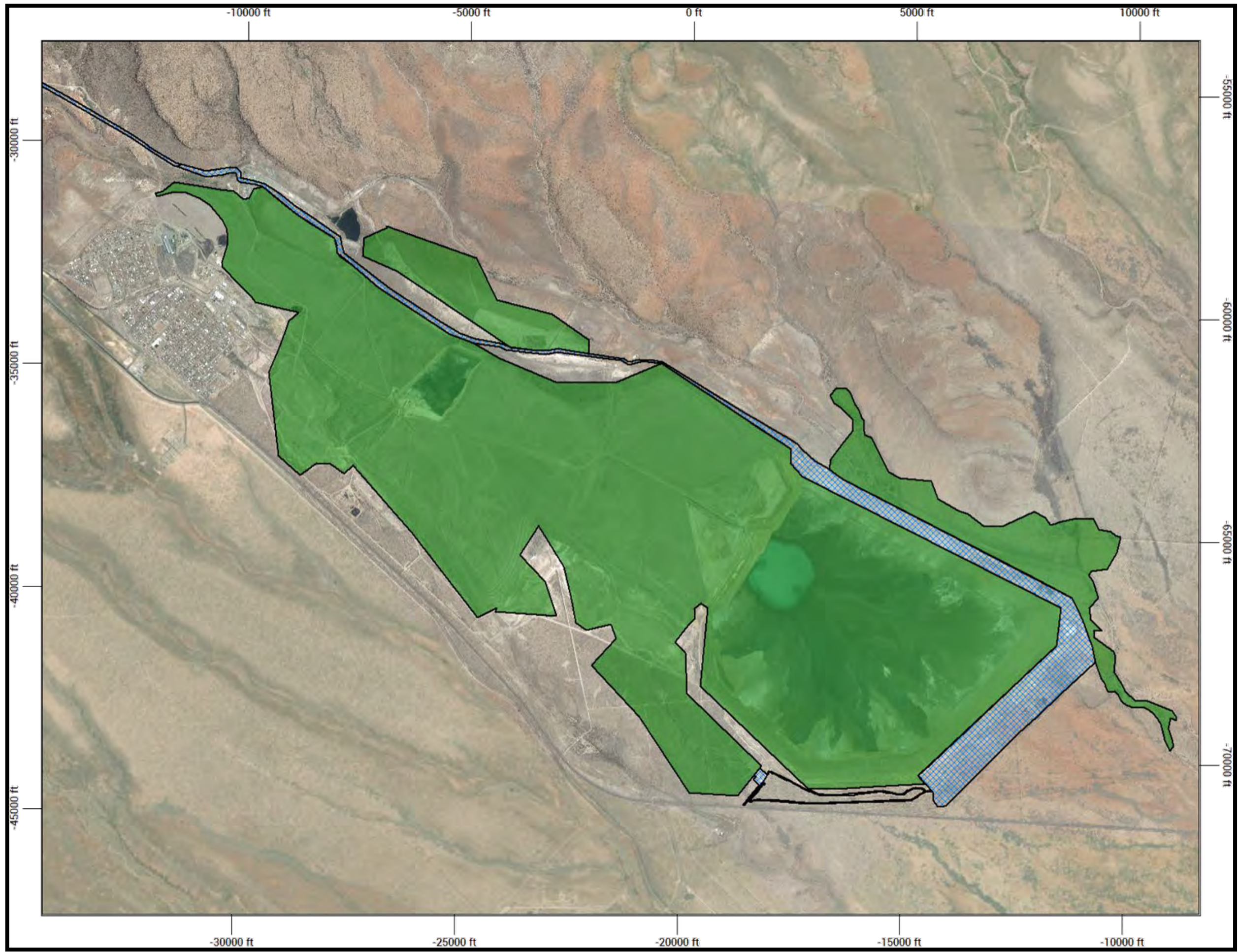


 SCALE IN FEET
 COORDINATE SYSTEM
 CHINO LOCAL MINE

FIGURE 11
NMA PMLU



PREPARED BY:

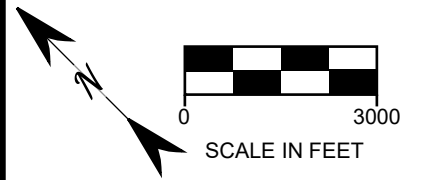

PREPARED FOR:

NOTES:

AERIAL IMAGERY: CHINO MINES
SATELLITE SURVEY, APRIL 21, 2024

-  WILDLIFE
-  WATER MANAGEMENT

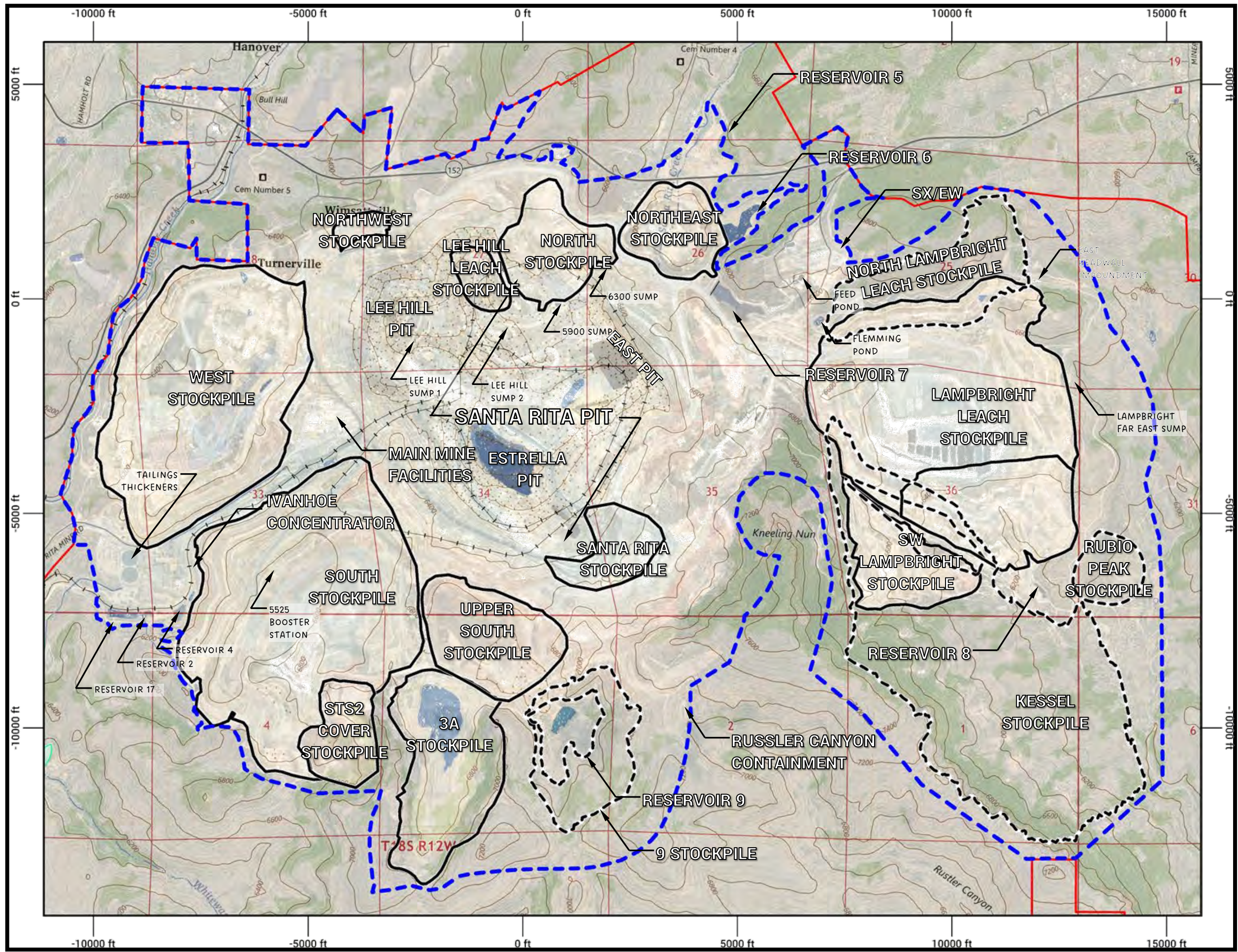


COORDINATE SYSTEM
CHINO LOCAL MINE

FIGURE 12
SMA PMLU

PREPARED BY:
TELESTO
SOLUTIONS INCORPORATED

PREPARED FOR:
Freeport-McMORAN



NOTES:
 AERIAL IMAGERY: CHINO MINES
 SATELLITE SURVEY, JUNE 26, 2023

- - - 2025 DESIGN LIMIT UPDATE
- MINE PERMIT BOUNDARY

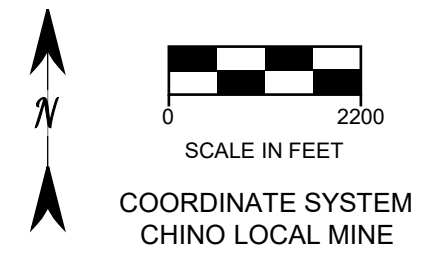
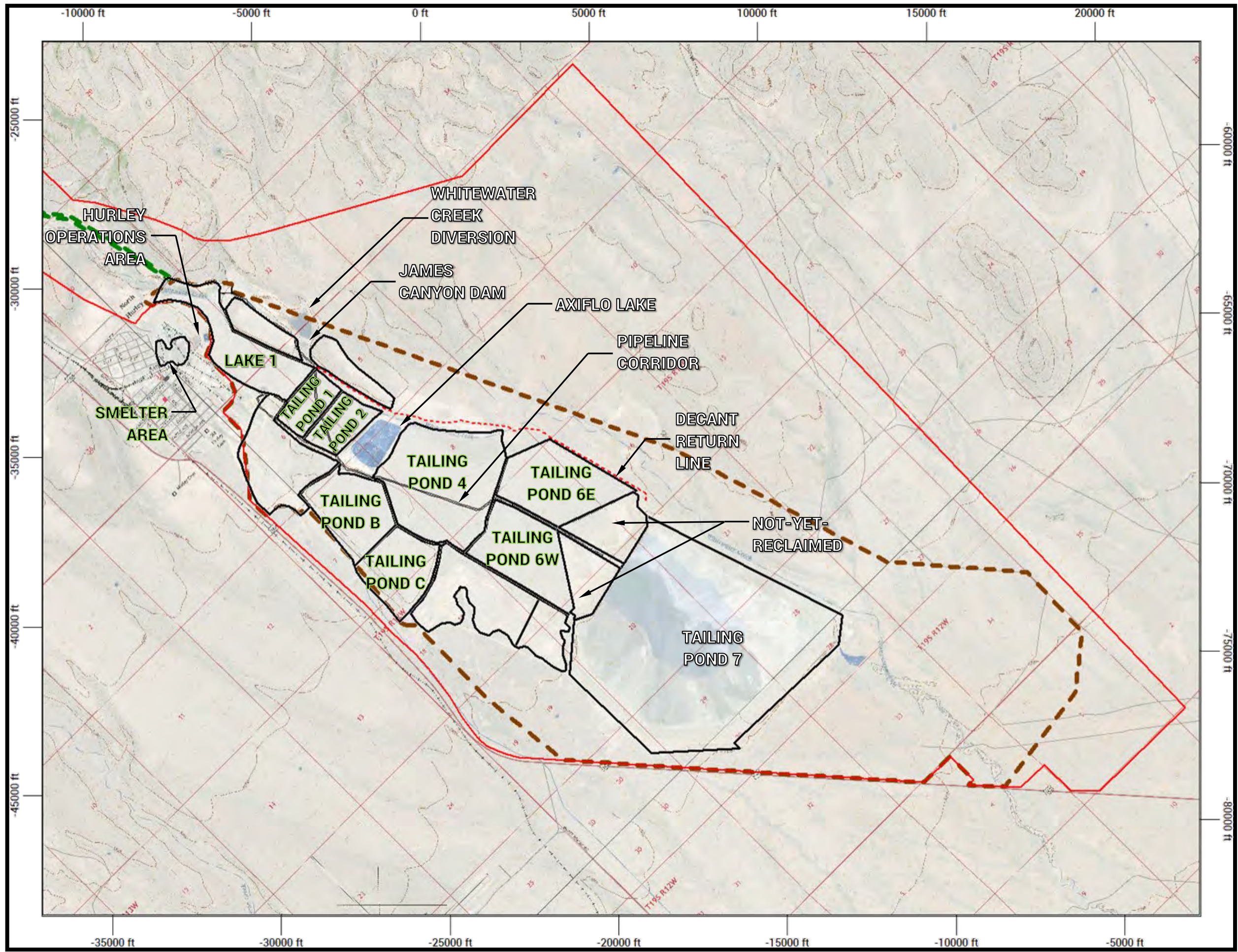


FIGURE 13
NMA DESIGN LIMIT UPDATE

PREPARED BY:
TELESTO
 SOLUTIONS INCORPORATED



PREPARED FOR:
Freeport-McMORAN



NOTES:
 AERIAL IMAGERY: CHINO MINES SATELLITE SURVEY, APRIL 21, 2024

AERIAL IMAGERY SMALL SCALE: ESRI, MAXAR, EARTHSTAR GEOGRAPHICS, AND THE GIS USER COMMUNITY, WORLD IMAGERY 2024

- TAILING POND** RECLAIMED AREA
- TAILING POND 7** OPERATIONAL AREA
- MINE PERMIT BOUNDARY
- - -** 2025 DESIGN LIMIT UPDATE

 SCALE IN MILES
 COORDINATE SYSTEM
 CHINO LOCAL MINE

FIGURE 14
 SMA DESIGN LIMIT UPDATE

PREPARED BY:
TELESTO
 SOLUTIONS INCORPORATED

PREPARED FOR:
Freeport-McMoRan