

State of New Mexico
Energy, Minerals and Natural Resources Department

Michelle Lujan Grisham
Governor

Melanie A. Kenderdine
Cabinet Secretary

Ben Shelton
Acting Deputy Secretary

Albert Chang, Director
Mining and Minerals Division



January 8, 2025

Governor Randall Vicente
Pueblo of Acoma
P.O. Box 309
Acoma, NM 87034

Re: Request for Comments on Chino Mine Closure/Closeout Plan Update, Chino Mine, Grant County, New Mexico, Permit No. GR009RE, Revision 24-2

Dear Governor Vicente,

The Mining and Minerals Division (“MMD”) of the New Mexico Energy, Minerals, and Natural Resources Department has received an application from Freeport-McMoRan Chino Mines Company (“FMI”) to update the Closure/Closeout Plan (“CCP”) for the Chino Mine. The CCP describes the work to be completed to reclaim the permit area, which includes regrading and reclaiming areas of disturbance including waste rock stockpiles, leach stockpiles, haul roads, and facilities. The CCP also includes plans for revegetation of the site to meet the post-mining land uses of livestock grazing, wildlife habitat, and industrial/commercial use.

The Chino Mine is a large-scale open pit copper mine located approximately 10 miles east of Silver City, New Mexico. Facilities associated with the Chino Mine include multiple waste rock and leach stockpiles, the Santa Rita open pit, a concentrator facility, mine tailings impoundments, a solution extraction-electrowinning plant, and other support facilities.

This notification is being submitted to you pursuant to 19.10.5.506 NMAC. Enclosed is a map showing the permit area for your reference. The CCP update can be viewed and downloaded in its entirety from the MMD website at this address: <https://www.emnrd.nm.gov/mmd/gr009re-chino-mine-modification-24-2-2024-ccp-update/>

MMD is offering to consult with you on this proposed CCP for the Chino Mine, in particular, to identify traditional cultural or religious properties that you wish to be taken into consideration before MMD makes a final determination on the CCP. This information is important in order for MMD to evaluate potential impacts and work toward developing avoidance or protection options. If you would like to initiate formal consultation about this application or to provide comments, please contact the undersigned within 30 days or by February 5, 2025, by phone at (505) 470-5354 or email at kevin.barnes@emnrd.nm.gov.

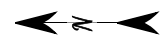
Sincerely,

Kevin Barnes, Permit Lead
Mining and Minerals Division

Enclosures (Project Vicinity Maps)
cc: Project File (GR009RE)

NOTES:

AERIAL IMAGERY: ESRI, MAXAR, EARTHSTAR GEOGRAPHICS, AND THE GIS USER COMMUNITY, WORLD IMAGERY 2024



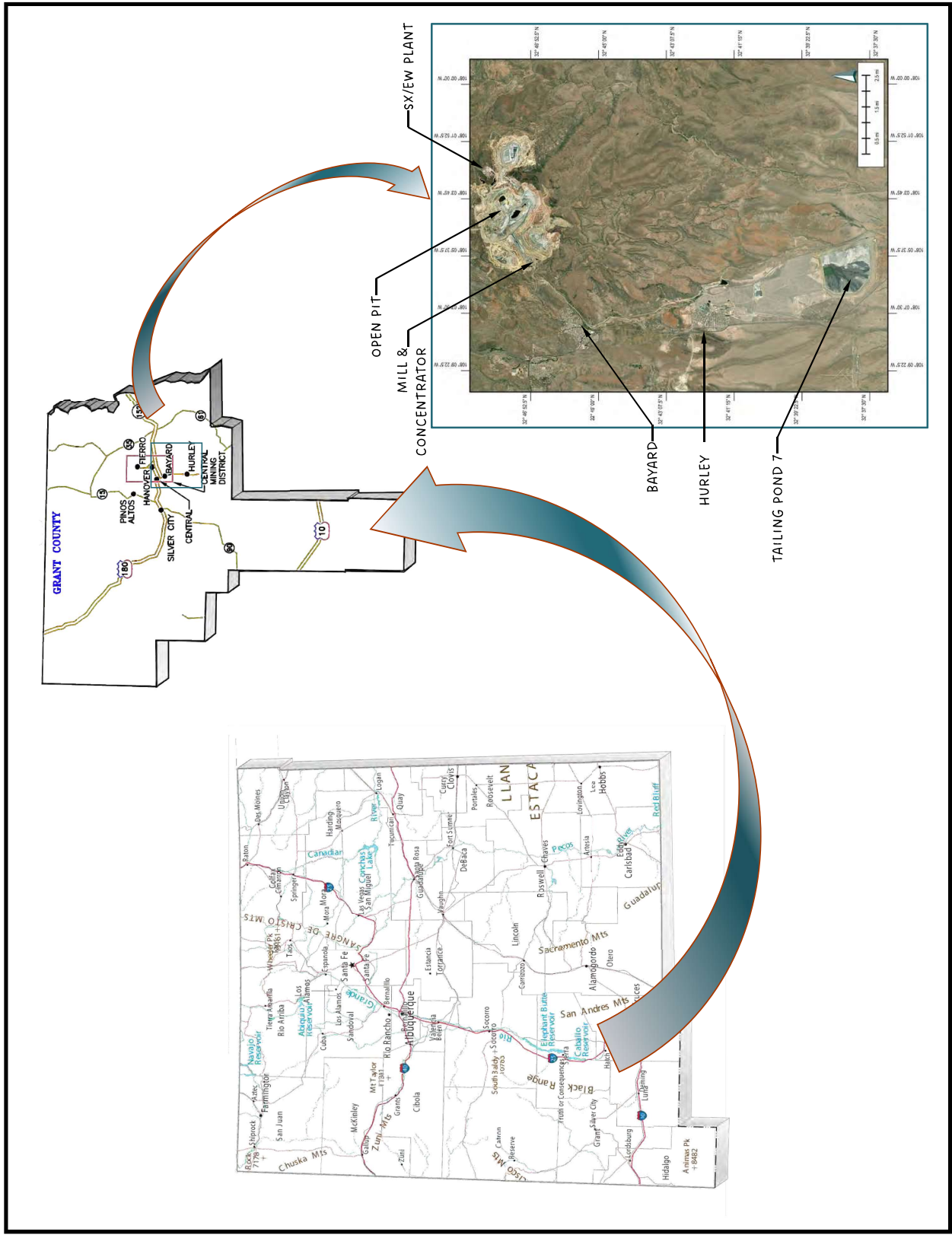
COORDINATE SYSTEM
GEOGRAPHIC

**FIGURE 1
CHINO MINE LOCATION**

PREPARED BY:



PREPARED FOR:



NOTES:

AERIAL IMAGERY: ESRI, MAXAR, EARTHSTAR GEOGRAPHICS, AND THE GIS USER COMMUNITY, WORLD IMAGERY 2024

QUADRANGLE MAPS: USGS NATIONAL MAP DATABASE

- MINE PERMIT BOUNDARY
- - - APPROX. DESIGN LIMIT BOUNDARY



**FIGURE 2
CHINO MINE GENERAL AREAS AND PERMIT BOUNDARY**

PREPARED BY:

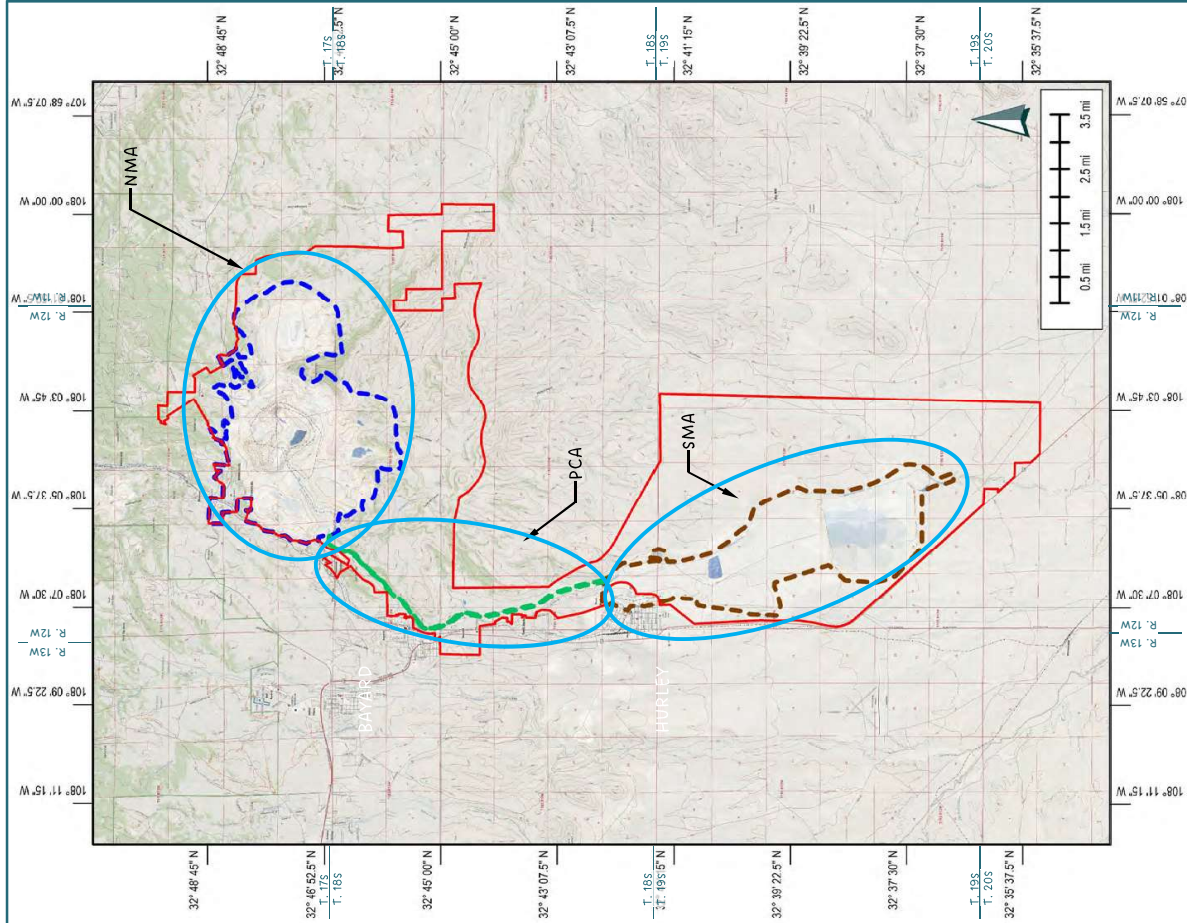


PREPARED FOR:



GENERAL EXTENTS OF MINE PERMIT BOUNDARY

- Township 17 South, Range 11 West: Sections 30 and 31;
- Township 17 South, Range 12 West: Sections 14, 15, 21, 22, 23, 24, 25, 26, 27, 28, 29, 32, 33, 34, 35 and 36
- Township 18 South, Range 13 West: Sections 12 and 13
- Township 18 South, Range 12 West: Sections 1, 2, 3, 4, 5, 6, 7, 8, 9, 10, 11, 12, 13, 14, 15, 16, 17, 18, 19, 29, 30, 31, 32, and 33
- Township 18 South, Range 11 West: Sections 6, 7, 8, 17, 18
- Township 19 South, Range 12 West: Sections 2, 3, 4, 5, 6, 7, 8, 9, 10, 11, 14, 15, 16, 17, 18, 19, 20, 21, 22, 23, 26, 27, 28, 29, 30, 32, 33, 34, and 35
- Township 20 South, Range 12 West: Sections 2, 3, and 4



State of New Mexico
Energy, Minerals and Natural Resources Department

Michelle Lujan Grisham
Governor

Melanie A. Kenderdine
Cabinet Secretary

Ben Shelton
Acting Deputy Secretary

Albert Chang, Director
Mining and Minerals Division



January 8, 2025

THPO Steven Concho
Pueblo of Acoma
P.O. Box 309
Acoma, NM 87034

Re: Request for Comments on Chino Mine Closure/Closeout Plan Update, Chino Mine, Grant County, New Mexico, Permit No. GR009RE, Revision 24-2

Dear THPO Concho,

The Mining and Minerals Division (“MMD”) of the New Mexico Energy, Minerals, and Natural Resources Department has received an application from Freeport-McMoRan Chino Mines Company (“FMI”) to update the Closure/Closeout Plan (“CCP”) for the Chino Mine. The CCP describes the work to be completed to reclaim the permit area, which includes regrading and reclaiming areas of disturbance including waste rock stockpiles, leach stockpiles, haul roads, and facilities. The CCP also includes plans for revegetation of the site to meet the post-mining land uses of livestock grazing, wildlife habitat, and industrial/commercial use.

The Chino Mine is a large-scale open pit copper mine located approximately 10 miles east of Silver City, New Mexico. Facilities associated with the Chino Mine include multiple waste rock and leach stockpiles, the Santa Rita open pit, a concentrator facility, mine tailings impoundments, a solution extraction-electrowinning plant, and other support facilities.

This notification is being submitted to you pursuant to 19.10.5.506 NMAC. Enclosed is a map showing the permit area for your reference. The CCP update can be viewed and downloaded in its entirety from the MMD website at this address: <https://www.emnrd.nm.gov/mmd/gr009re-chino-mine-modification-24-2-2024-ccp-update/>

MMD is offering to consult with you on this proposed CCP for the Chino Mine, in particular, to identify traditional cultural or religious properties that you wish to be taken into consideration before MMD makes a final determination on the CCP. This information is important in order for MMD to evaluate potential impacts and work toward developing avoidance or protection options. If you would like to initiate formal consultation about this application or to provide comments, please contact the undersigned within 30 days or by February 5, 2025, by phone at (505) 470-5354 or email at kevin.barnes@emnrd.nm.gov.

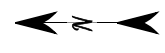
Sincerely,

Kevin Barnes, Permit Lead
Mining and Minerals Division

Enclosures (Project Vicinity Maps)
cc: Project File (GR009RE)

NOTES:

AERIAL IMAGERY: ESRI, MAXAR, EARTHSTAR GEOGRAPHICS, AND THE GIS USER COMMUNITY, WORLD IMAGERY 2024



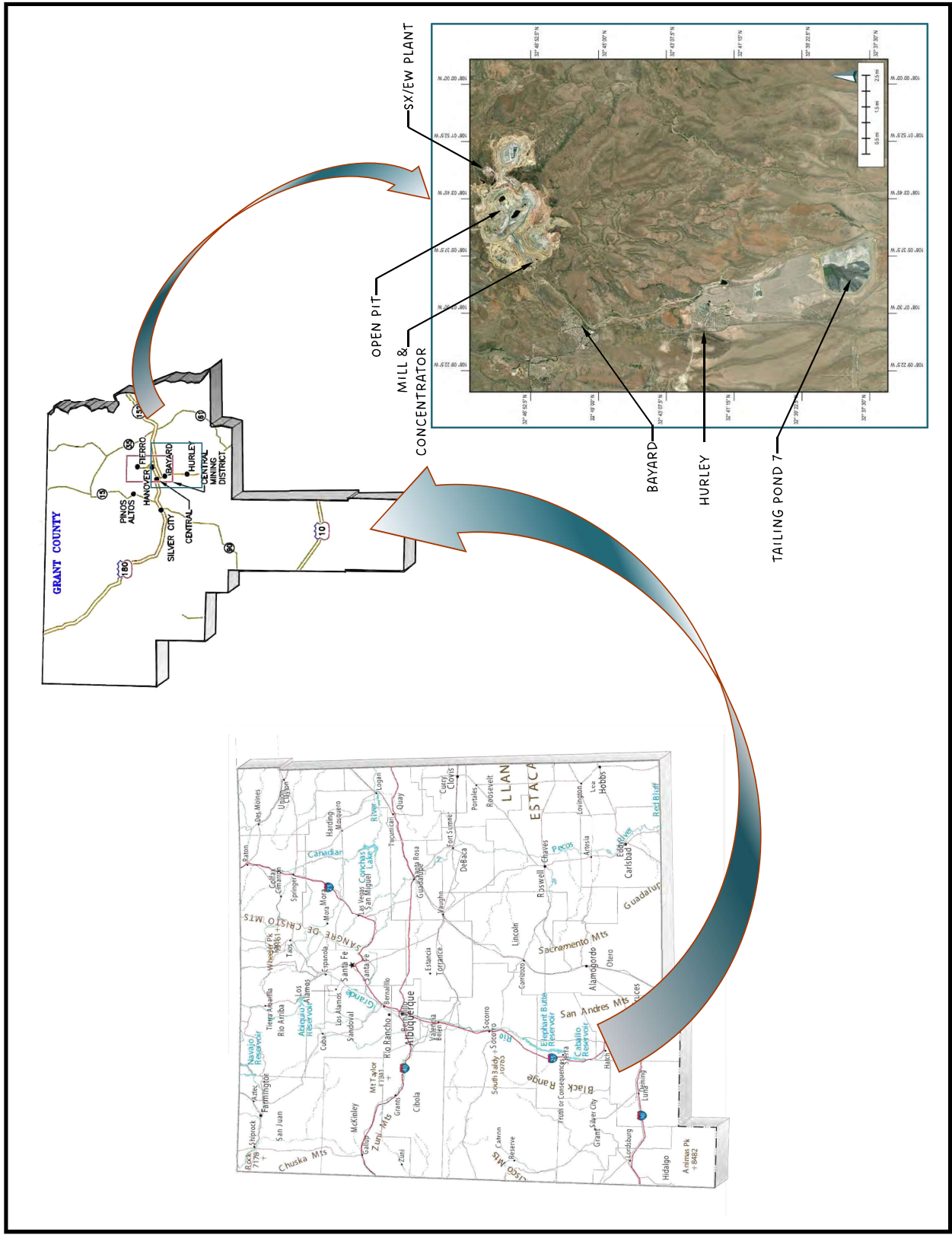
COORDINATE SYSTEM
GEOGRAPHIC

FIGURE 1
CHINO MINE LOCATION

PREPARED BY:



PREPARED FOR:



NOTES:

AERIAL IMAGERY: ESRI, MAXAR, EARTHSTAR GEOGRAPHICS, AND THE GIS USER COMMUNITY, WORLD IMAGERY 2024

QUADRANGLE MAPS: USGS NATIONAL MAP DATABASE

- MINE PERMIT BOUNDARY
- - - APPROX. DESIGN LIMIT BOUNDARY



**FIGURE 2
CHINO MINE GENERAL AREAS AND PERMIT BOUNDARY**

PREPARED BY:

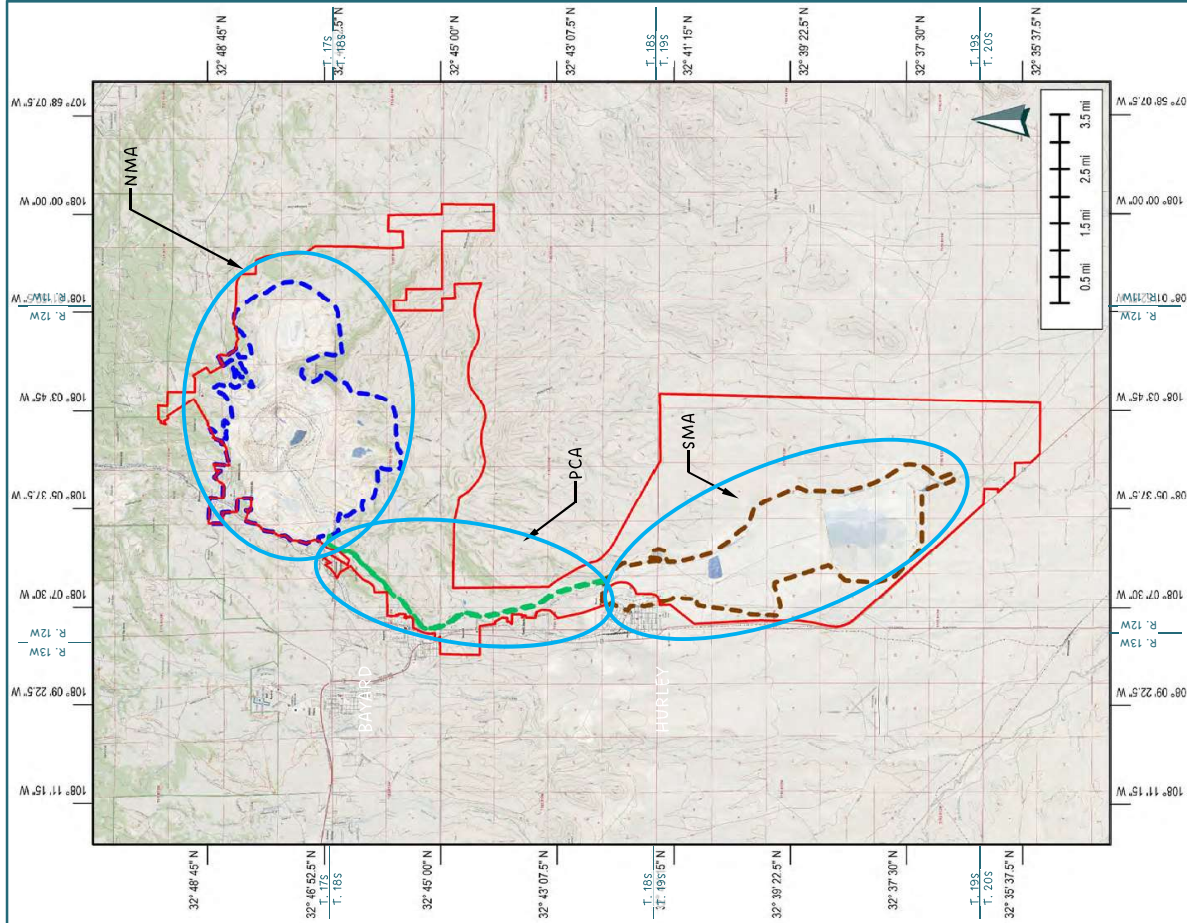


PREPARED FOR:



GENERAL EXTENTS OF MINE PERMIT BOUNDARY

- Township 17 South, Range 11 West: Sections 30 and 31;
- Township 17 South, Range 12 West: Sections 14, 15, 21, 22, 23, 24, 25, 26, 27, 28, 29, 32, 33, 34, 35 and 36
- Township 18 South, Range 13 West: Sections 12 and 13
- Township 18 South, Range 12 West: Sections 1, 2, 3, 4, 5, 6, 7, 8, 9, 10, 11, 12, 13, 14, 15, 16, 17, 18, 19, 29, 30, 31, 32, and 33
- Township 18 South, Range 11 West: Sections 6, 7, 8, 17, 18
- Township 19 South, Range 12 West: Sections 2, 3, 4, 5, 6, 7, 8, 9, 10, 11, 14, 15, 16, 17, 18, 19, 20, 21, 22, 23, 26, 27, 28, 29, 30, 32, 33, 34, and 35
- Township 20 South, Range 12 West: Sections 2, 3, and 4



State of New Mexico
Energy, Minerals and Natural Resources Department

Michelle Lujan Grisham
Governor

Melanie A. Kenderdine
Cabinet Secretary

Ben Shelton
Acting Deputy Secretary

Albert Chang, Director
Mining and Minerals Division



January 8, 2025

Governor Max Zuni
Pueblo of Isleta
P.O. Box 1270
Isleta Pueblo, NM 87022

Re: Request for Comments on Chino Mine Closure/Closeout Plan Update, Chino Mine, Grant County, New Mexico, Permit No. GR009RE, Revision 24-2

Dear Governor Zuni,

The Mining and Minerals Division (“MMD”) of the New Mexico Energy, Minerals, and Natural Resources Department has received an application from Freeport-McMoRan Chino Mines Company (“FMI”) to update the Closure/Closeout Plan (“CCP”) for the Chino Mine. The CCP describes the work to be completed to reclaim the permit area, which includes regrading and reclaiming areas of disturbance including waste rock stockpiles, leach stockpiles, haul roads, and facilities. The CCP also includes plans for revegetation of the site to meet the post-mining land uses of livestock grazing, wildlife habitat, and industrial/commercial use.

The Chino Mine is a large-scale open pit copper mine located approximately 10 miles east of Silver City, New Mexico. Facilities associated with the Chino Mine include multiple waste rock and leach stockpiles, the Santa Rita open pit, a concentrator facility, mine tailings impoundments, a solution extraction-electrowinning plant, and other support facilities.

This notification is being submitted to you pursuant to 19.10.5.506 NMAC. Enclosed is a map showing the permit area for your reference. The CCP update can be viewed and downloaded in its entirety from the MMD website at this address: <https://www.emnrd.nm.gov/mmd/gr009re-chino-mine-modification-24-2-2024-ccp-update/>

MMD is offering to consult with you on this proposed CCP for the Chino Mine, in particular, to identify traditional cultural or religious properties that you wish to be taken into consideration before MMD makes a final determination on the CCP. This information is important in order for MMD to evaluate potential impacts and work toward developing avoidance or protection options. If you would like to initiate formal consultation about this application or to provide comments, please contact the undersigned within 30 days or by February 5, 2025, by phone at (505) 470-5354 or email at kevin.barnes@emnrd.nm.gov.

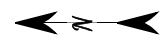
Sincerely,

Kevin Barnes, Permit Lead
Mining and Minerals Division

Enclosures (Project Vicinity Maps)
cc: Project File (GR009RE)

NOTES:

AERIAL IMAGERY: ESRI, MAXAR, EARTHSTAR GEOGRAPHICS, AND THE GIS USER COMMUNITY, WORLD IMAGERY 2024



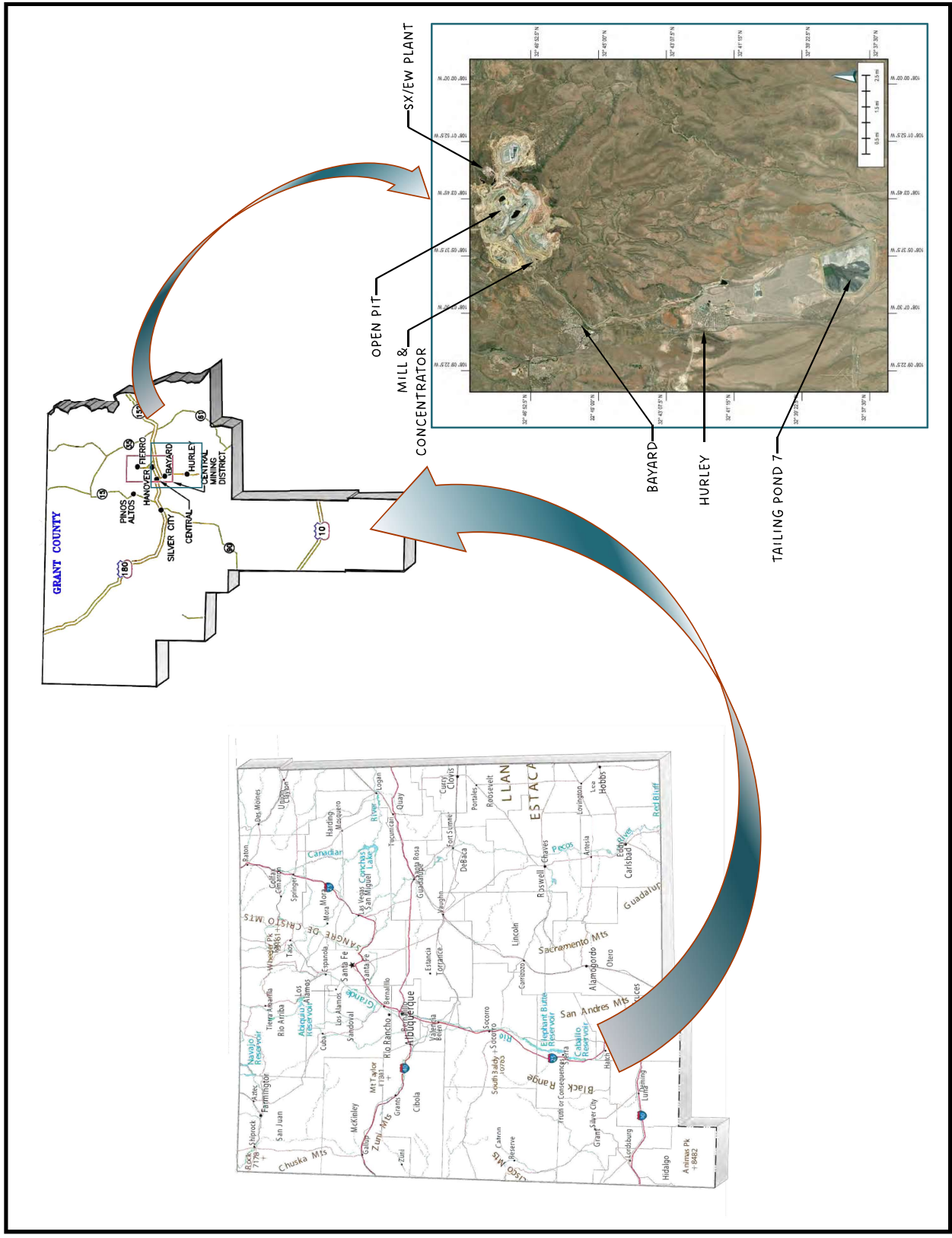
COORDINATE SYSTEM
GEOGRAPHIC

FIGURE 1
CHINO MINE LOCATION

PREPARED BY:



PREPARED FOR:



NOTES:

AERIAL IMAGERY: ESRI, MAXAR, EARTHSTAR GEOGRAPHICS, AND THE GIS USER COMMUNITY, WORLD IMAGERY 2024

QUADRANGLE MAPS: USGS NATIONAL MAP DATABASE

- MINE PERMIT BOUNDARY
- - - APPROX. DESIGN LIMIT BOUNDARY



**FIGURE 2
CHINO MINE GENERAL AREAS AND
PERMIT BOUNDARY**

PREPARED BY:

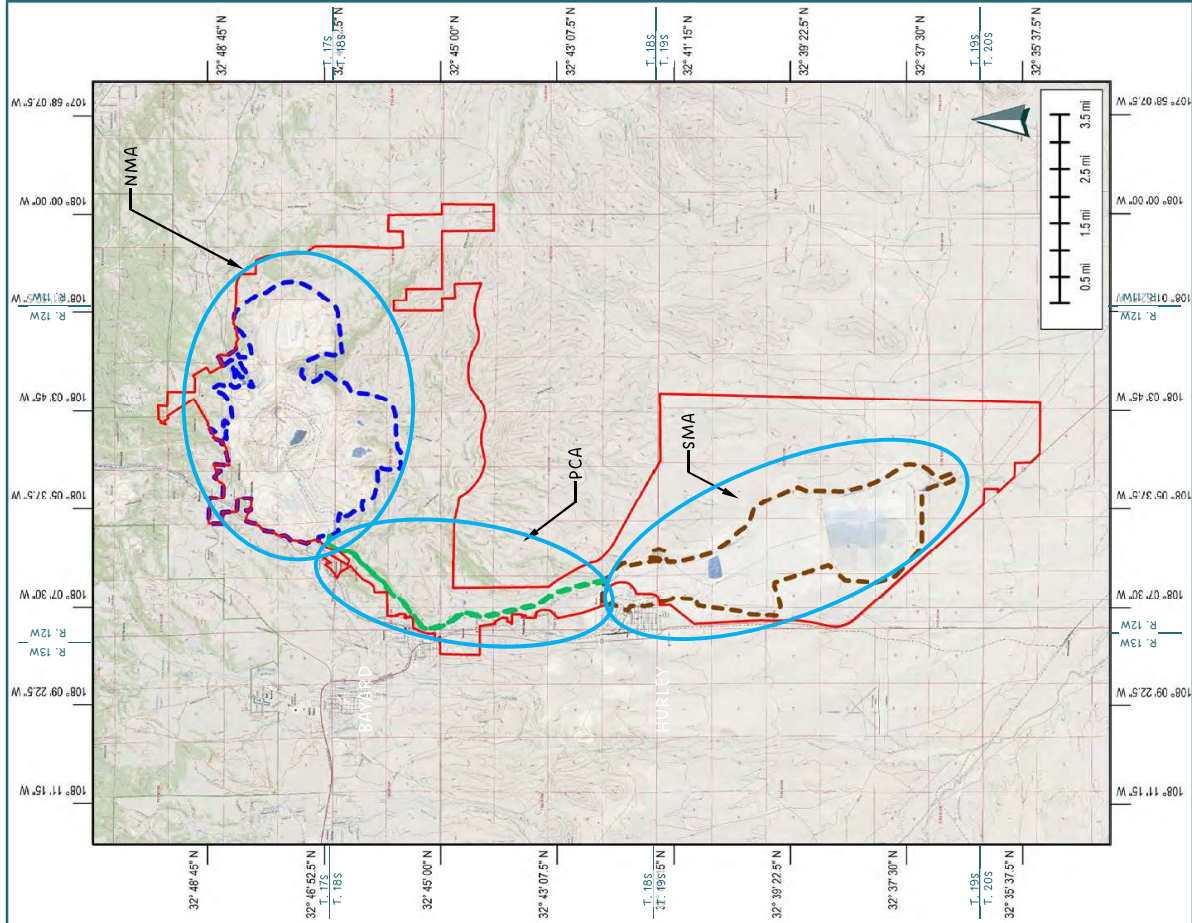


PREPARED FOR:



GENERAL EXTENTS OF MINE PERMIT BOUNDARY

- Township 17 South, Range 11 West: Sections 30 and 31;
- Township 17 South, Range 12 West: Sections 14, 15, 21, 22, 23, 24, 25, 26, 27, 28, 29, 32, 33, 34, 35 and 36
- Township 18 South, Range 13 West: Sections 12 and 13
- Township 18 South, Range 12 West: Sections 1, 2, 3, 4, 5, 6, 7, 8, 9, 10, 11, 12, 13, 14, 15, 16, 17, 18, 19, 29, 30, 31, 32, and 33
- Township 18 South, Range 11 West: Sections 6, 7, 8, 17, 18
- Township 19 South, Range 12 West: Sections 2, 3, 4, 5, 6, 7, 8, 9, 10, 11, 14, 15, 16, 17, 18, 19, 20, 21, 22, 23, 26, 27, 28, 29, 30, 32, 33, 34, and 35
- Township 20 South, Range 12 West: Sections 2, 3, and 4



State of New Mexico
Energy, Minerals and Natural Resources Department

Michelle Lujan Grisham
Governor

Melanie A. Kenderdine
Cabinet Secretary

Ben Shelton
Acting Deputy Secretary

Albert Chang, Director
Mining and Minerals Division



January 8, 2025

THPO Henry Walt
Pueblo of Isleta
P.O. Box 1270
Isleta Pueblo, NM 87022

Re: Request for Comments on Chino Mine Closure/Closeout Plan Update, Chino Mine, Grant County, New Mexico, Permit No. GR009RE, Revision 24-2

Dear THPO Walt,

The Mining and Minerals Division (“MMD”) of the New Mexico Energy, Minerals, and Natural Resources Department has received an application from Freeport-McMoRan Chino Mines Company (“FMI”) to update the Closure/Closeout Plan (“CCP”) for the Chino Mine. The CCP describes the work to be completed to reclaim the permit area, which includes regrading and reclaiming areas of disturbance including waste rock stockpiles, leach stockpiles, haul roads, and facilities. The CCP also includes plans for revegetation of the site to meet the post-mining land uses of livestock grazing, wildlife habitat, and industrial/commercial use.

The Chino Mine is a large-scale open pit copper mine located approximately 10 miles east of Silver City, New Mexico. Facilities associated with the Chino Mine include multiple waste rock and leach stockpiles, the Santa Rita open pit, a concentrator facility, mine tailings impoundments, a solution extraction-electrowinning plant, and other support facilities.

This notification is being submitted to you pursuant to 19.10.5.506 NMAC. Enclosed is a map showing the permit area for your reference. The CCP update can be viewed and downloaded in its entirety from the MMD website at this address: <https://www.emnrd.nm.gov/mmd/gr009re-chino-mine-modification-24-2-2024-ccp-update/>

MMD is offering to consult with you on this proposed CCP for the Chino Mine, in particular, to identify traditional cultural or religious properties that you wish to be taken into consideration before MMD makes a final determination on the CCP. This information is important in order for MMD to evaluate potential impacts and work toward developing avoidance or protection options. If you would like to initiate formal consultation about this application or to provide comments, please contact the undersigned within 30 days or by February 5, 2025, by phone at (505) 470-5354 or email at kevin.barnes@emnrd.nm.gov.

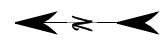
Sincerely,

Kevin Barnes, Permit Lead
Mining and Minerals Division

Enclosures (Project Vicinity Maps)
cc: Project File (GR009RE)

NOTES:

AERIAL IMAGERY: ESRI, MAXAR, EARTHSTAR GEOGRAPHICS, AND THE GIS USER COMMUNITY, WORLD IMAGERY 2024



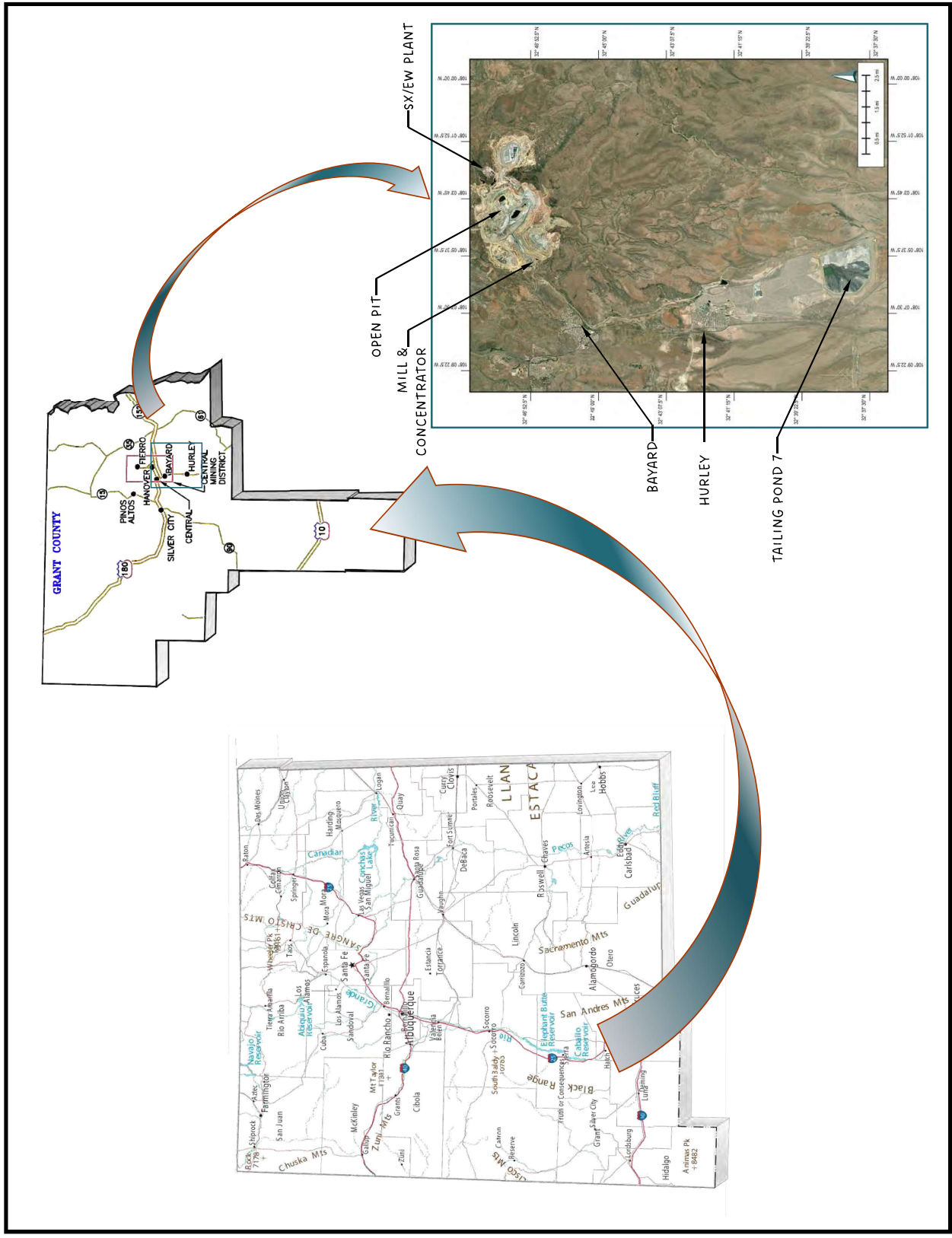
COORDINATE SYSTEM
GEOGRAPHIC

FIGURE 1
CHINO MINE LOCATION

PREPARED BY:



PREPARED FOR:



NOTES:

AERIAL IMAGERY: ESRI, MAXAR, EARTHSTAR GEOGRAPHICS, AND THE GIS USER COMMUNITY, WORLD IMAGERY 2024

QUADRANGLE MAPS: USGS NATIONAL MAP DATABASE

- MINE PERMIT BOUNDARY
- - - APPROX. DESIGN LIMIT BOUNDARY



**FIGURE 2
CHINO MINE GENERAL AREAS AND PERMIT BOUNDARY**

PREPARED BY:

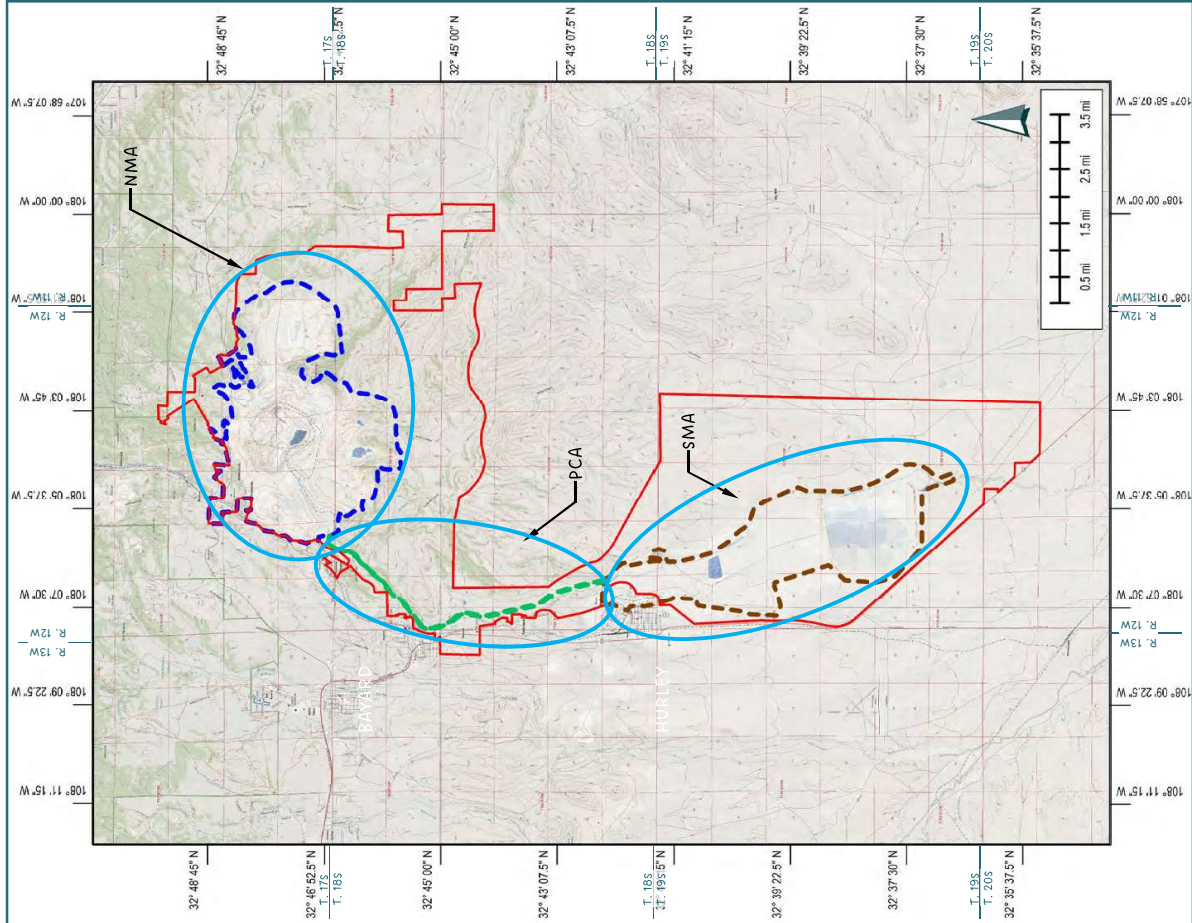


PREPARED FOR:



GENERAL EXTENTS OF MINE PERMIT BOUNDARY

- Township 17 South, Range 11 West: Sections 30 and 31;
- Township 17 South, Range 12 West: Sections 14, 15, 21, 22, 23, 24, 25, 26, 27, 28, 29, 32, 33, 34, 35 and 36
- Township 18 South, Range 13 West: Sections 12 and 13
- Township 18 South, Range 12 West: Sections 1, 2, 3, 4, 5, 6, 7, 8, 9, 10, 11, 12, 13, 14, 15, 16, 17, 18, 19, 29, 30, 31, 32, and 33
- Township 18 South, Range 11 West: Sections 6, 7, 8, 17, 18
- Township 19 South, Range 12 West: Sections 2, 3, 4, 5, 6, 7, 8, 9, 10, 11, 14, 15, 16, 17, 18, 19, 20, 21, 22, 23, 26, 27, 28, 29, 30, 32, 33, 34, and 35
- Township 20 South, Range 12 West: Sections 2, 3, and 4



State of New Mexico
Energy, Minerals and Natural Resources Department

Michelle Lujan Grisham
Governor

Melanie A. Kenderdine
Cabinet Secretary

Ben Shelton
Acting Deputy Secretary

Albert Chang, Director
Mining and Minerals Division



January 8, 2025

Governor Arden Kucate
Pueblo of Zuni
P.O. Box 339
Zuni, NM 87327

Re: Request for Comments on Chino Mine Closure/Closeout Plan Update, Chino Mine, Grant County, New Mexico, Permit No. GR009RE, Revision 24-2

Dear Governor Kucate,

The Mining and Minerals Division (“MMD”) of the New Mexico Energy, Minerals, and Natural Resources Department has received an application from Freeport-McMoRan Chino Mines Company (“FMI”) to update the Closure/Closeout Plan (“CCP”) for the Chino Mine. The CCP describes the work to be completed to reclaim the permit area, which includes regrading and reclaiming areas of disturbance including waste rock stockpiles, leach stockpiles, haul roads, and facilities. The CCP also includes plans for revegetation of the site to meet the post-mining land uses of livestock grazing, wildlife habitat, and industrial/commercial use.

The Chino Mine is a large-scale open pit copper mine located approximately 10 miles east of Silver City, New Mexico. Facilities associated with the Chino Mine include multiple waste rock and leach stockpiles, the Santa Rita open pit, a concentrator facility, mine tailings impoundments, a solution extraction-electrowinning plant, and other support facilities.

This notification is being submitted to you pursuant to 19.10.5.506 NMAC. Enclosed is a map showing the permit area for your reference. The CCP update can be viewed and downloaded in its entirety from the MMD website at this address: <https://www.emnrd.nm.gov/mmd/gr009re-chino-mine-modification-24-2-2024-ccp-update/>

MMD is offering to consult with you on this proposed CCP for the Chino Mine, in particular, to identify traditional cultural or religious properties that you wish to be taken into consideration before MMD makes a final determination on the CCP. This information is important in order for MMD to evaluate potential impacts and work toward developing avoidance or protection options. If you would like to initiate formal consultation about this application or to provide comments, please contact the undersigned within 30 days or by February 5, 2025, by phone at (505) 470-5354 or email at kevin.barnes@emnrd.nm.gov.

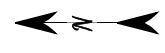
Sincerely,

Kevin Barnes, Permit Lead
Mining and Minerals Division

Enclosures (Project Vicinity Maps)
cc: Project File (GR009RE)

NOTES:

AERIAL IMAGERY: ESRI, MAXAR, EARTHSTAR GEOGRAPHICS, AND THE GIS USER COMMUNITY, WORLD IMAGERY 2024



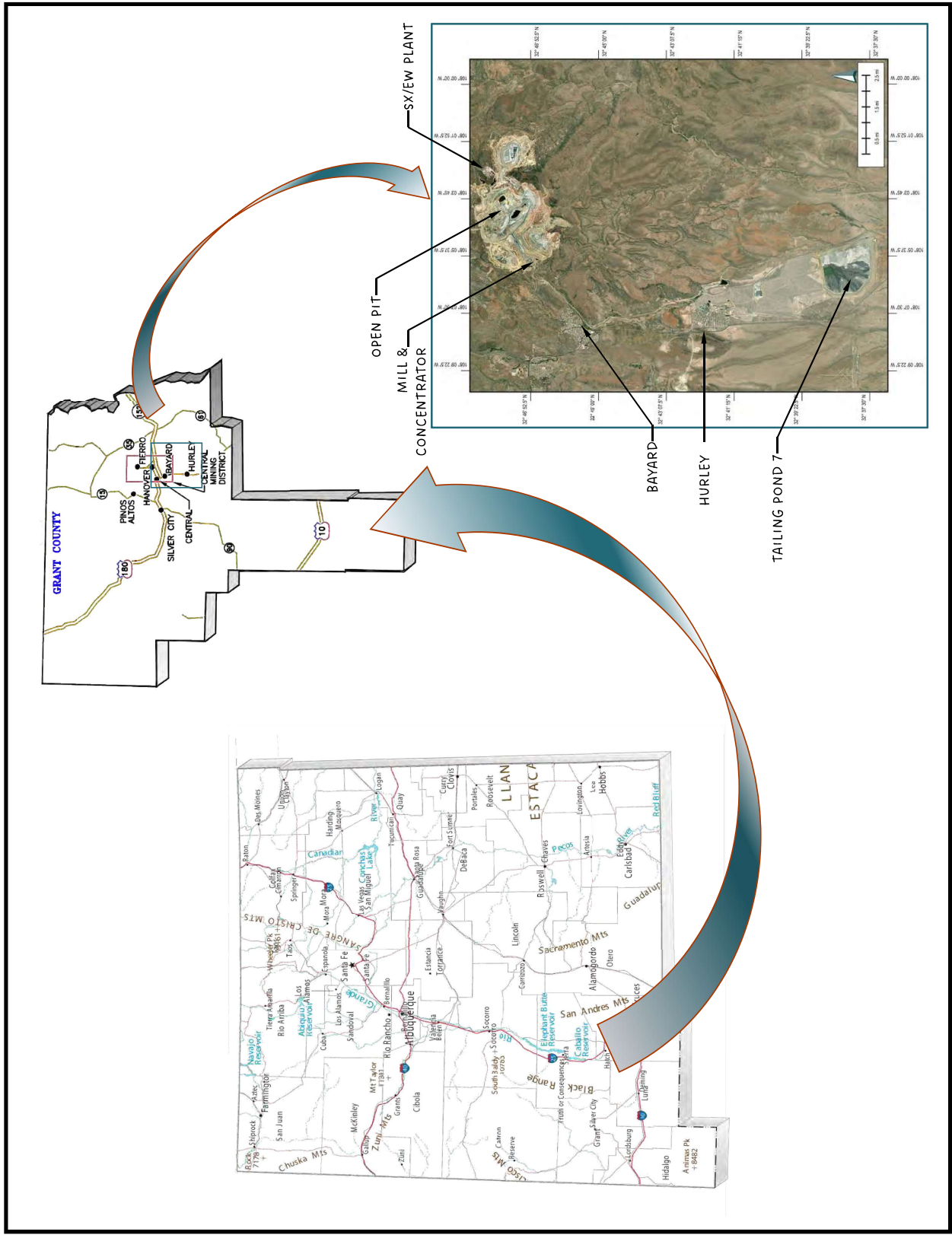
COORDINATE SYSTEM
GEOGRAPHIC

FIGURE 1
CHINO MINE LOCATION

PREPARED BY:



PREPARED FOR:



NOTES:

AERIAL IMAGERY: ESRI, MAXAR, EARTHSTAR GEOGRAPHICS, AND THE GIS USER COMMUNITY, WORLD IMAGERY 2024

QUADRANGLE MAPS: USGS NATIONAL MAP DATABASE

- MINE PERMIT BOUNDARY
- - - APPROX. DESIGN LIMIT BOUNDARY



FIGURE 2
CHINO MINE GENERAL AREAS AND PERMIT BOUNDARY

PREPARED BY:

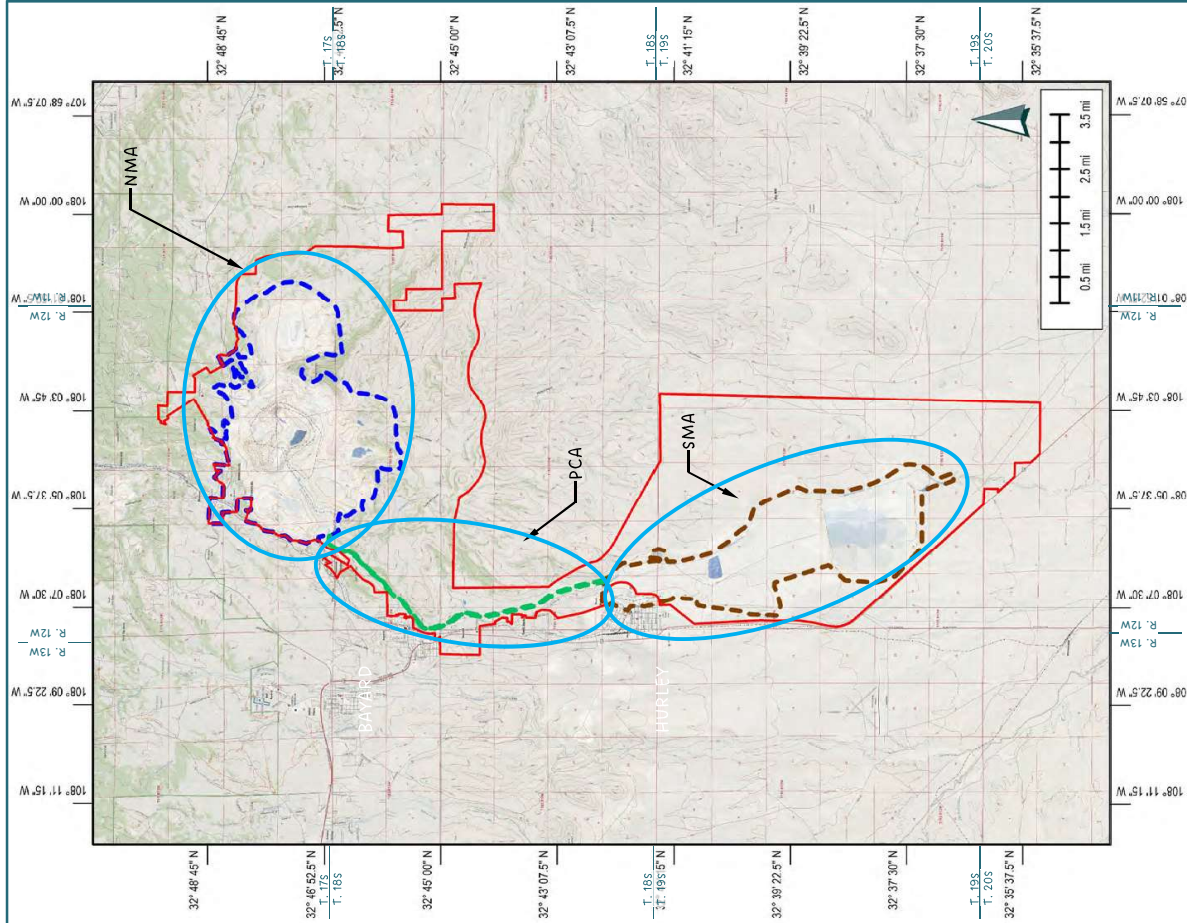


PREPARED FOR:



GENERAL EXTENTS OF MINE PERMIT BOUNDARY

- Township 17 South, Range 11 West: Sections 30 and 31;
- Township 17 South, Range 12 West: Sections 14, 15, 21, 22, 23, 24, 25, 26, 27, 28, 29, 32, 33, 34, 35 and 36
- Township 18 South, Range 13 West: Sections 12 and 13
- Township 18 South, Range 12 West: Sections 1, 2, 3, 4, 5, 6, 7, 8, 9, 10, 11, 12, 13, 14, 15, 16, 17, 18, 19, 29, 30, 31, 32, and 33
- Township 18 South, Range 11 West: Sections 6, 7, 8, 17, 18
- Township 19 South, Range 12 West: Sections 2, 3, 4, 5, 6, 7, 8, 9, 10, 11, 14, 15, 16, 17, 18, 19, 20, 21, 22, 23, 26, 27, 28, 29, 30, 32, 33, 34, and 35
- Township 20 South, Range 12 West: Sections 2, 3, and 4



State of New Mexico
Energy, Minerals and Natural Resources Department

Michelle Lujan Grisham
Governor

Melanie A. Kenderdine
Cabinet Secretary

Ben Shelton
Acting Deputy Secretary

Albert Chang, Director
Mining and Minerals Division



January 8, 2025

THPO Kurt Dongoske
Pueblo of Zuni
P.O. Box 339
Zuni, NM 87327

Re: Request for Comments on Chino Mine Closure/Closeout Plan Update, Chino Mine, Grant County, New Mexico, Permit No. GR009RE, Revision 24-2

Dear THPO Dongoske,

The Mining and Minerals Division (“MMD”) of the New Mexico Energy, Minerals, and Natural Resources Department has received an application from Freeport-McMoRan Chino Mines Company (“FMI”) to update the Closure/Closeout Plan (“CCP”) for the Chino Mine. The CCP describes the work to be completed to reclaim the permit area, which includes regrading and reclaiming areas of disturbance including waste rock stockpiles, leach stockpiles, haul roads, and facilities. The CCP also includes plans for revegetation of the site to meet the post-mining land uses of livestock grazing, wildlife habitat, and industrial/commercial use.

The Chino Mine is a large-scale open pit copper mine located approximately 10 miles east of Silver City, New Mexico. Facilities associated with the Chino Mine include multiple waste rock and leach stockpiles, the Santa Rita open pit, a concentrator facility, mine tailings impoundments, a solution extraction-electrowinning plant, and other support facilities.

This notification is being submitted to you pursuant to 19.10.5.506 NMAC. Enclosed is a map showing the permit area for your reference. The CCP update can be viewed and downloaded in its entirety from the MMD website at this address: <https://www.emnrd.nm.gov/mmd/gr009re-chino-mine-modification-24-2-2024-ccp-update/>

MMD is offering to consult with you on this proposed CCP for the Chino Mine, in particular, to identify traditional cultural or religious properties that you wish to be taken into consideration before MMD makes a final determination on the CCP. This information is important in order for MMD to evaluate potential impacts and work toward developing avoidance or protection options. If you would like to initiate formal consultation about this application or to provide comments, please contact the undersigned within 30 days or by February 5, 2025, by phone at (505) 470-5354 or email at kevin.barnes@emnrd.nm.gov.

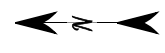
Sincerely,

Kevin Barnes, Permit Lead
Mining and Minerals Division

Enclosures (Project Vicinity Maps)
cc: Project File (GR009RE)

NOTES:

AERIAL IMAGERY: ESRI, MAXAR, EARTHSTAR GEOGRAPHICS, AND THE GIS USER COMMUNITY, WORLD IMAGERY 2024



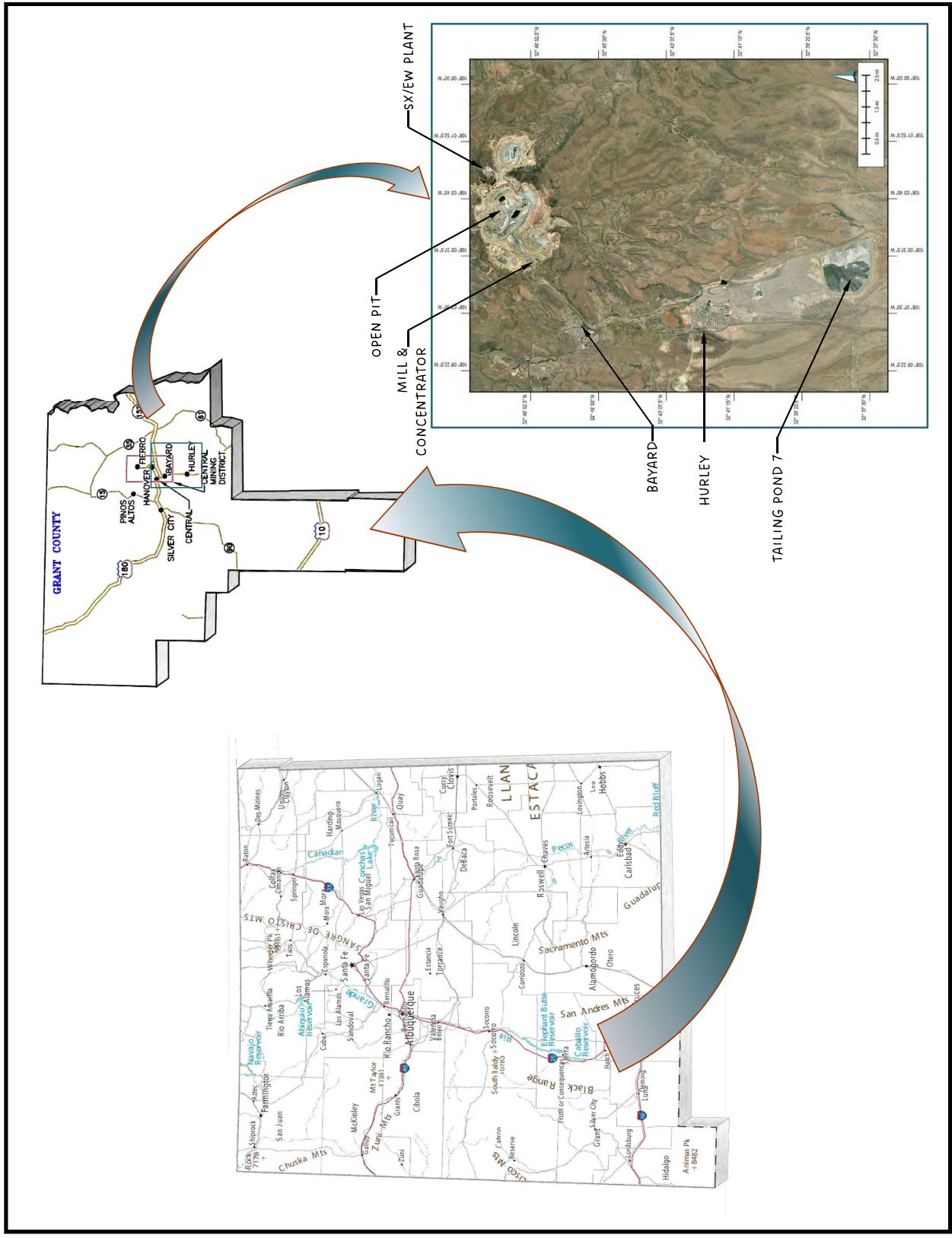
SCALE AS SHOWN
COORDINATE SYSTEM
GEOGRAPHIC

**FIGURE 1
CHINO MINE LOCATION**

PREPARED BY:



PREPARED FOR:



NOTES:

AERIAL IMAGERY: ESRI, MAXAR, EARTHSTAR GEOGRAPHICS, AND THE GIS USER COMMUNITY, WORLD IMAGERY 2024

QUADRANGLE MAPS: USGS NATIONAL MAP DATABASE

- MINE PERMIT BOUNDARY
- - - APPROX. DESIGN LIMIT BOUNDARY



**FIGURE 2
CHINO MINE GENERAL AREAS AND PERMIT BOUNDARY**

PREPARED BY:

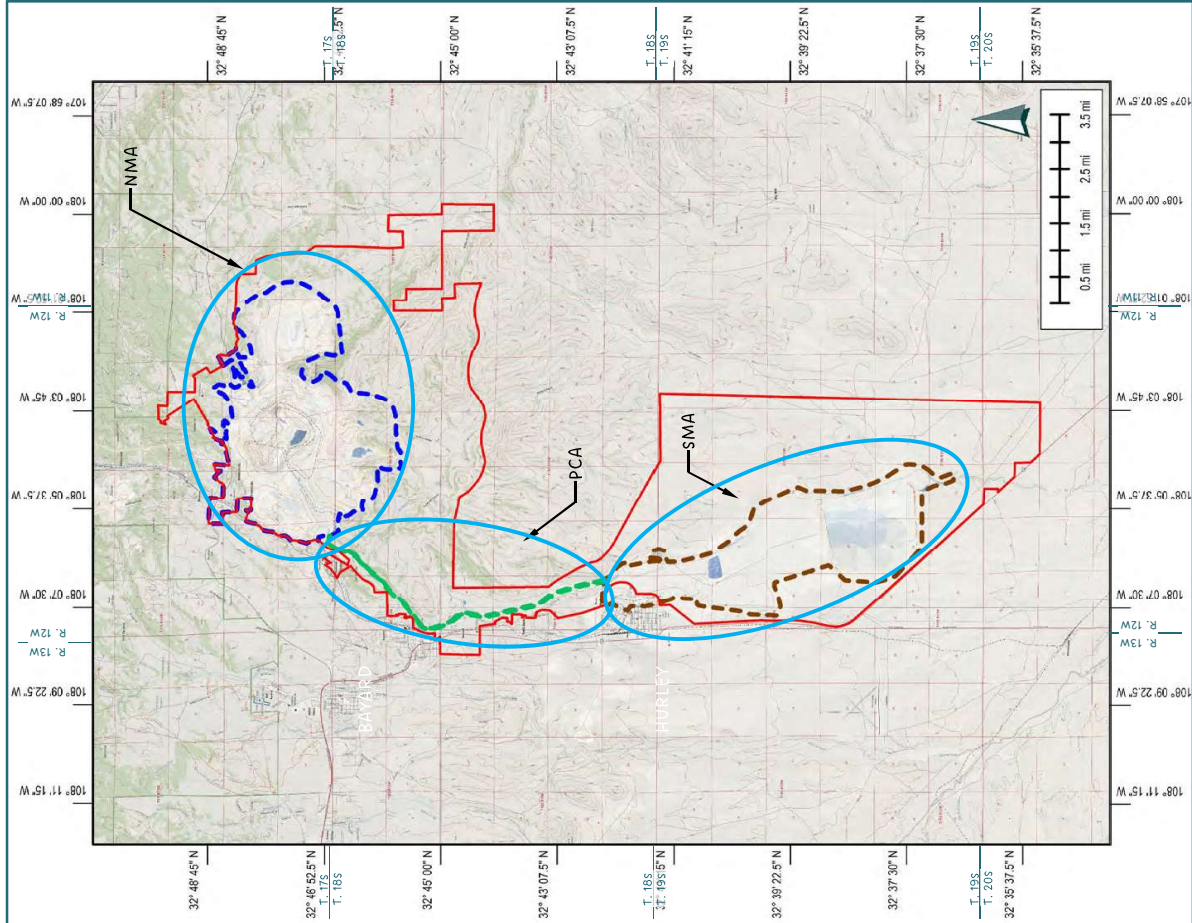


PREPARED FOR:



GENERAL EXTENTS OF MINE PERMIT BOUNDARY

- Township 17 South, Range 11 West: Sections 30 and 31;
- Township 17 South, Range 12 West: Sections 14, 15, 21, 22, 23, 24, 25, 26, 27, 28, 29, 32, 33, 34, 35 and 36
- Township 18 South, Range 13 West: Sections 12 and 13
- Township 18 South, Range 12 West: Sections 1, 2, 3, 4, 5, 6, 7, 8, 9, 10, 11, 12, 13, 14, 15, 16, 17, 18, 19, 29, 30, 31, 32, and 33
- Township 18 South, Range 11 West: Sections 6, 7, 8, 17, 18
- Township 19 South, Range 12 West: Sections 2, 3, 4, 5, 6, 7, 8, 9, 10, 11, 14, 15, 16, 17, 18, 19, 20, 21, 22, 23, 26, 27, 28, 29, 30, 32, 33, 34, and 35
- Township 20 South, Range 12 West: Sections 2, 3, and 4



State of New Mexico
Energy, Minerals and Natural Resources Department

Michelle Lujan Grisham
Governor

Melanie A. Kenderdine
Cabinet Secretary

Ben Shelton
Acting Deputy Secretary

Albert Chang, Director
Mining and Minerals Division



January 8, 2025

Chairwoman Lori Gooday-Ware
Fort Sill Apache Tribe of Oklahoma
Rt. 2, Box 121
Apache, OK 73006

Re: Request for Comments on Chino Mine Closure/Closeout Plan Update, Chino Mine, Grant County, New Mexico, Permit No. GR009RE, Revision 24-2

Dear Chairwoman Gooday-Ware,

The Mining and Minerals Division (“MMD”) of the New Mexico Energy, Minerals, and Natural Resources Department has received an application from Freeport-McMoRan Chino Mines Company (“FMI”) to update the Closure/Closeout Plan (“CCP”) for the Chino Mine. The CCP describes the work to be completed to reclaim the permit area, which includes regrading and reclaiming areas of disturbance including waste rock stockpiles, leach stockpiles, haul roads, and facilities. The CCP also includes plans for revegetation of the site to meet the post-mining land uses of livestock grazing, wildlife habitat, and industrial/commercial use.

The Chino Mine is a large-scale open pit copper mine located approximately 10 miles east of Silver City, New Mexico. Facilities associated with the Chino Mine include multiple waste rock and leach stockpiles, the Santa Rita open pit, a concentrator facility, mine tailings impoundments, a solution extraction-electrowinning plant, and other support facilities.

This notification is being submitted to you pursuant to 19.10.5.506 NMAC. Enclosed is a map showing the permit area for your reference. The CCP update can be viewed and downloaded in its entirety from the MMD website at this address: <https://www.emnrd.nm.gov/mmd/gr009re-chino-mine-modification-24-2-2024-ccp-update/>

MMD is offering to consult with you on this proposed CCP for the Chino Mine, in particular, to identify traditional cultural or religious properties that you wish to be taken into consideration before MMD makes a final determination on the CCP. This information is important in order for MMD to evaluate potential impacts and work toward developing avoidance or protection options. If you would like to initiate formal consultation about this application or to provide comments, please contact the undersigned within 30 days or by February 5, 2025, by phone at (505) 470-5354 or email at kevin.barnes@emnrd.nm.gov.

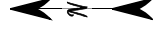
Sincerely,

Kevin Barnes, Permit Lead
Mining and Minerals Division

Enclosures (Project Vicinity Maps)
cc: Project File (GR009RE)

NOTES:

AERIAL IMAGERY: ESRI, MAXAR, EARTHSTAR GEOGRAPHICS, AND THE GIS USER COMMUNITY, WORLD IMAGERY 2024



SCALE AS SHOWN
COORDINATE SYSTEM
GEOGRAPHIC

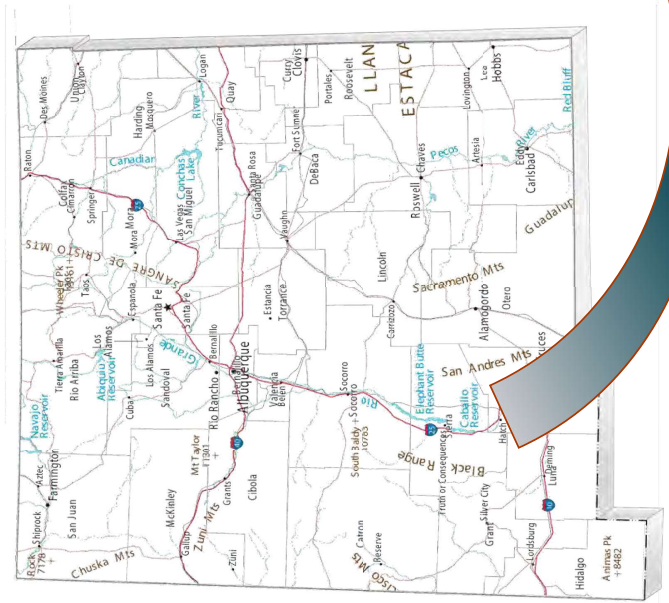
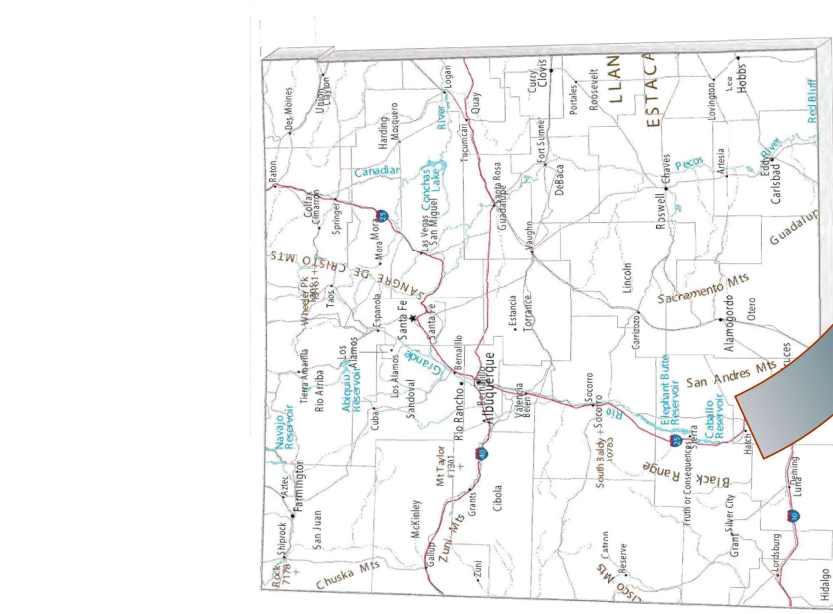
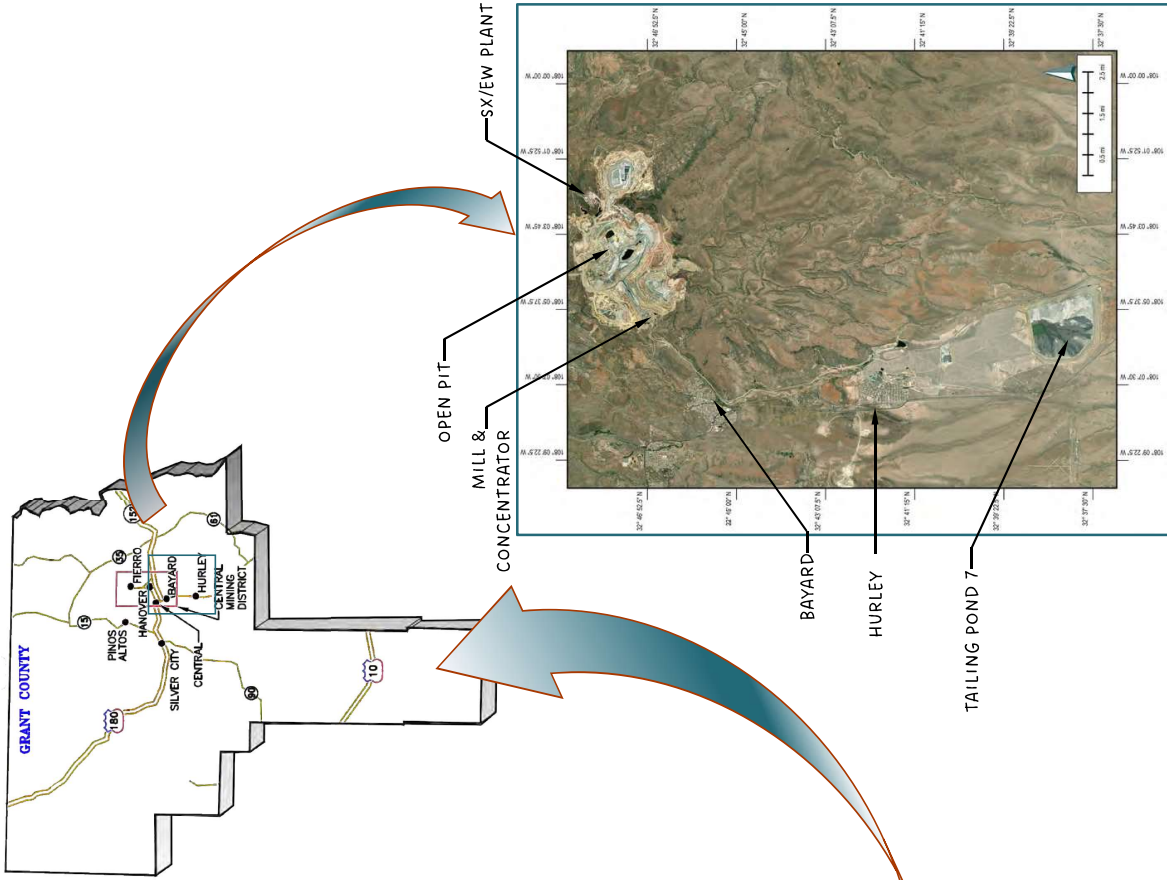
FIGURE 1
CHINO MINE LOCATION

PREPARED BY:

TELESTO
SOLUTIONS INCORPORATED

PREPARED FOR:

Frem **FREEMPORT-MCMORAN**



NOTES:

AERIAL IMAGERY: ESRI, MAXAR, EARTHSTAR GEOGRAPHICS, AND THE GIS USER COMMUNITY, WORLD IMAGERY 2024

QUADRANGLE MAPS: USGS NATIONAL MAP DATABASE

- MINE PERMIT BOUNDARY
- - - APPROX. DESIGN LIMIT BOUNDARY



**FIGURE 2
CHINO MINE GENERAL AREAS AND PERMIT BOUNDARY**

PREPARED BY:

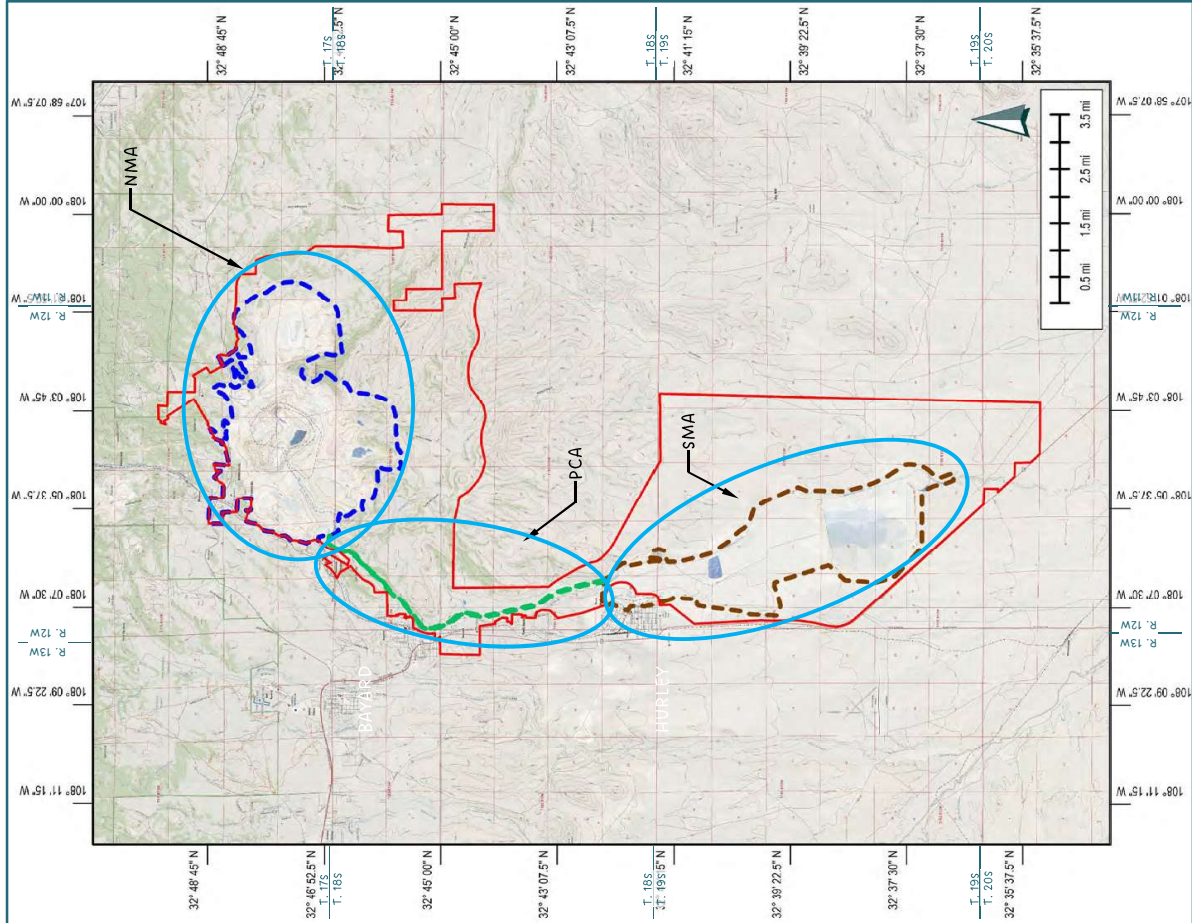


PREPARED FOR:



GENERAL EXTENTS OF MINE PERMIT BOUNDARY

- Township 17 South, Range 11 West: Sections 30 and 31;
- Township 17 South, Range 12 West: Sections 14, 15, 21, 22, 23, 24, 25, 26, 27, 28, 29, 32, 33, 34, 35 and 36
- Township 18 South, Range 13 West: Sections 12 and 13
- Township 18 South, Range 12 West: Sections 1, 2, 3, 4, 5, 6, 7, 8, 9, 10, 11, 12, 13, 14, 15, 16, 17, 18, 19, 29, 30, 31, 32, and 33
- Township 18 South, Range 11 West: Sections 6, 7, 8, 17, 18
- Township 19 South, Range 12 West: Sections 2, 3, 4, 5, 6, 7, 8, 9, 10, 11, 14, 15, 16, 17, 18, 19, 20, 21, 22, 23, 26, 27, 28, 29, 30, 32, 33, 34, and 35
- Township 20 South, Range 12 West: Sections 2, 3, and 4



State of New Mexico
Energy, Minerals and Natural Resources Department

Michelle Lujan Grisham
Governor

Melanie A. Kenderdine
Cabinet Secretary

Ben Shelton
Acting Deputy Secretary

Albert Chang, Director
Mining and Minerals Division



January 8, 2025

President Eddy Martinez
Mescalero Apache Tribe
P.O. Box 227
Mescalero, NM 88340

Re: Request for Comments on Chino Mine Closure/Closeout Plan Update, Chino Mine, Grant County, New Mexico, Permit No. GR009RE, Revision 24-2

Dear President Martinez,

The Mining and Minerals Division (“MMD”) of the New Mexico Energy, Minerals, and Natural Resources Department has received an application from Freeport-McMoRan Chino Mines Company (“FMI”) to update the Closure/Closeout Plan (“CCP”) for the Chino Mine. The CCP describes the work to be completed to reclaim the permit area, which includes regrading and reclaiming areas of disturbance including waste rock stockpiles, leach stockpiles, haul roads, and facilities. The CCP also includes plans for revegetation of the site to meet the post-mining land uses of livestock grazing, wildlife habitat, and industrial/commercial use.

The Chino Mine is a large-scale open pit copper mine located approximately 10 miles east of Silver City, New Mexico. Facilities associated with the Chino Mine include multiple waste rock and leach stockpiles, the Santa Rita open pit, a concentrator facility, mine tailings impoundments, a solution extraction-electrowinning plant, and other support facilities.

This notification is being submitted to you pursuant to 19.10.5.506 NMAC. Enclosed is a map showing the permit area for your reference. The CCP update can be viewed and downloaded in its entirety from the MMD website at this address: <https://www.emnrd.nm.gov/mmd/gr009re-chino-mine-modification-24-2-2024-ccp-update/>

MMD is offering to consult with you on this proposed CCP for the Chino Mine, in particular, to identify traditional cultural or religious properties that you wish to be taken into consideration before MMD makes a final determination on the CCP. This information is important in order for MMD to evaluate potential impacts and work toward developing avoidance or protection options. If you would like to initiate formal consultation about this application or to provide comments, please contact the undersigned within 30 days or by February 5, 2025, by phone at (505) 470-5354 or email at kevin.barnes@emnrd.nm.gov.

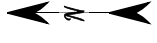
Sincerely,

Kevin Barnes, Permit Lead
Mining and Minerals Division

Enclosures (Project Vicinity Maps)
cc: Project File (GR009RE)

NOTES:

AERIAL IMAGERY: ESRI, MAXAR, EARTHSTAR GEOGRAPHICS, AND THE GIS USER COMMUNITY, WORLD IMAGERY 2024



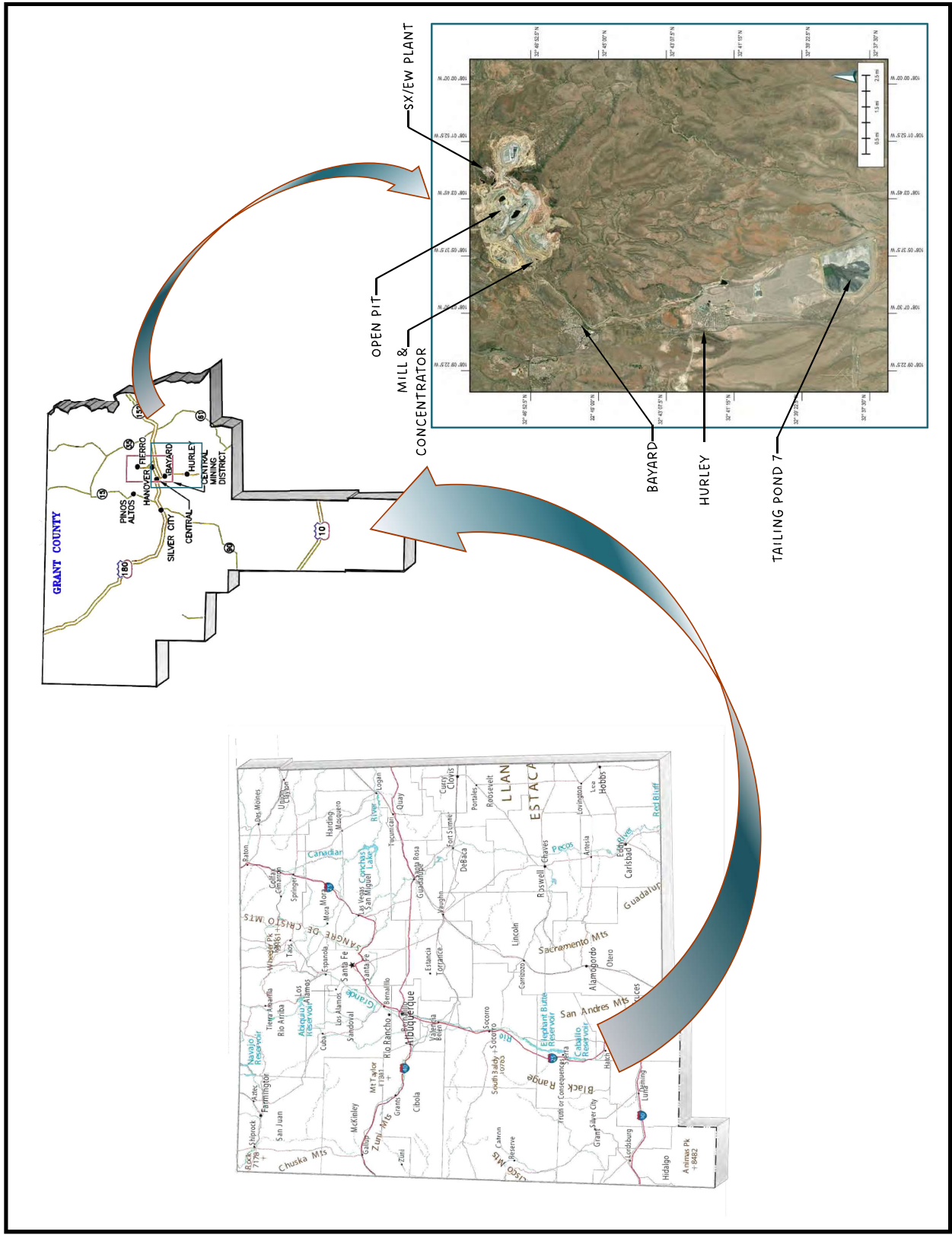
SCALE AS SHOWN
COORDINATE SYSTEM
GEOGRAPHIC

**FIGURE 1
CHINO MINE LOCATION**

PREPARED BY:



PREPARED FOR:



NOTES:

AERIAL IMAGERY: ESRI, MAXAR, EARTHSTAR GEOGRAPHICS, AND THE GIS USER COMMUNITY, WORLD IMAGERY 2024

QUADRANGLE MAPS: USGS NATIONAL MAP DATABASE

- MINE PERMIT BOUNDARY
- - - APPROX. DESIGN LIMIT BOUNDARY



**FIGURE 2
CHINO MINE GENERAL AREAS AND PERMIT BOUNDARY**

PREPARED BY:

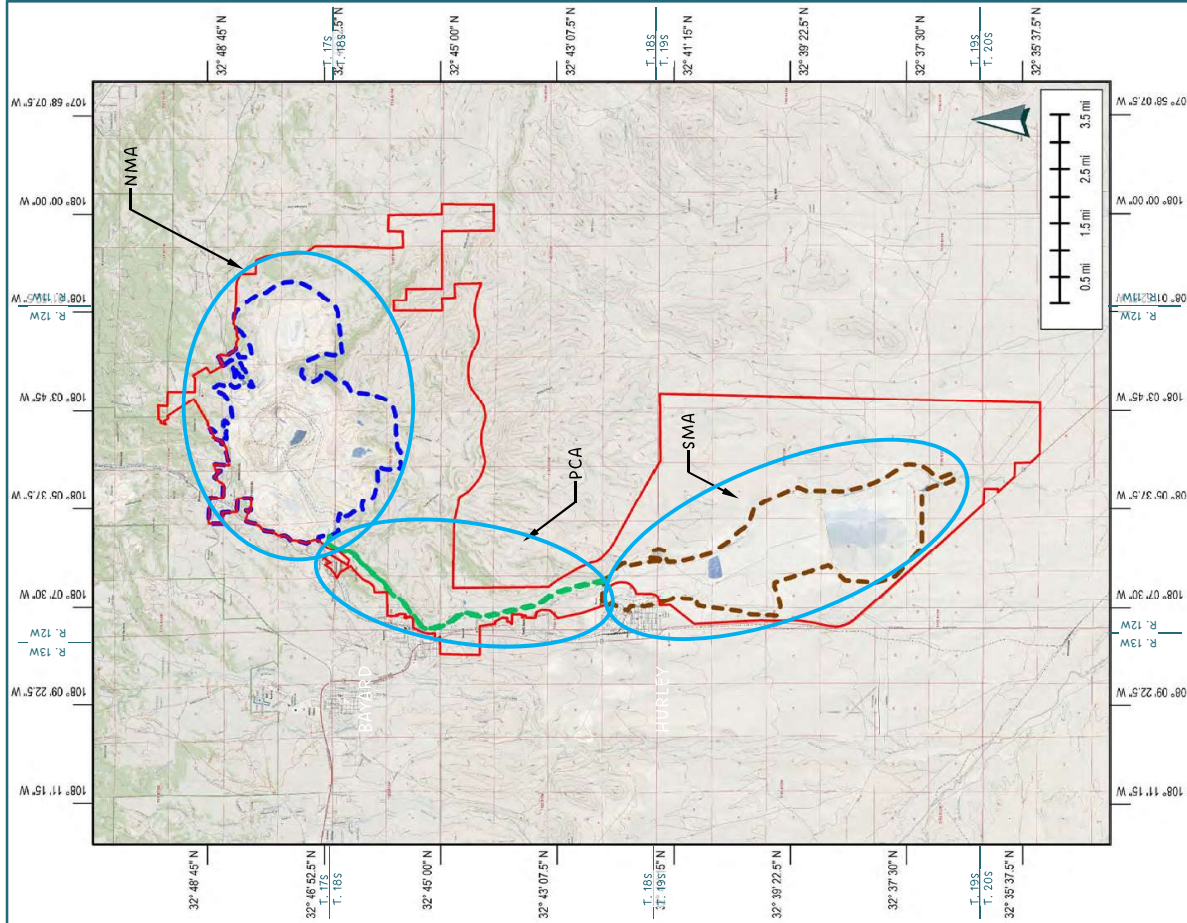


PREPARED FOR:



GENERAL EXTENTS OF MINE PERMIT BOUNDARY

- Township 17 South, Range 11 West: Sections 30 and 31;
- Township 17 South, Range 12 West: Sections 14, 15, 21, 22, 23, 24, 25, 26, 27, 28, 29, 32, 33, 34, 35 and 36
- Township 18 South, Range 13 West: Sections 12 and 13
- Township 18 South, Range 12 West: Sections 1, 2, 3, 4, 5, 6, 7, 8, 9, 10, 11, 12, 13, 14, 15, 16, 17, 18, 19, 29, 30, 31, 32, and 33
- Township 18 South, Range 11 West: Sections 6, 7, 8, 17, 18
- Township 19 South, Range 12 West: Sections 2, 3, 4, 5, 6, 7, 8, 9, 10, 11, 14, 15, 16, 17, 18, 19, 20, 21, 22, 23, 26, 27, 28, 29, 30, 32, 33, 34, and 35
- Township 20 South, Range 12 West: Sections 2, 3, and 4



State of New Mexico
Energy, Minerals and Natural Resources Department

Michelle Lujan Grisham
Governor

Melanie A. Kenderdine
Cabinet Secretary

Ben Shelton
Acting Deputy Secretary

Albert Chang, Director
Mining and Minerals Division



January 8, 2025

THPO Holly Houghton
Mescalero Apache Tribe
P.O. Box 227
Mescalero, NM 88340

Re: Request for Comments on Chino Mine Closure/Closeout Plan Update, Chino Mine, Grant County, New Mexico, Permit No. GR009RE, Revision 24-2

Dear THPO Houghton,

The Mining and Minerals Division (“MMD”) of the New Mexico Energy, Minerals, and Natural Resources Department has received an application from Freeport-McMoRan Chino Mines Company (“FMI”) to update the Closure/Closeout Plan (“CCP”) for the Chino Mine. The CCP describes the work to be completed to reclaim the permit area, which includes regrading and reclaiming areas of disturbance including waste rock stockpiles, leach stockpiles, haul roads, and facilities. The CCP also includes plans for revegetation of the site to meet the post-mining land uses of livestock grazing, wildlife habitat, and industrial/commercial use.

The Chino Mine is a large-scale open pit copper mine located approximately 10 miles east of Silver City, New Mexico. Facilities associated with the Chino Mine include multiple waste rock and leach stockpiles, the Santa Rita open pit, a concentrator facility, mine tailings impoundments, a solution extraction-electrowinning plant, and other support facilities.

This notification is being submitted to you pursuant to 19.10.5.506 NMAC. Enclosed is a map showing the permit area for your reference. The CCP update can be viewed and downloaded in its entirety from the MMD website at this address: <https://www.emnrd.nm.gov/mmd/gr009re-chino-mine-modification-24-2-2024-ccp-update/>

MMD is offering to consult with you on this proposed CCP for the Chino Mine, in particular, to identify traditional cultural or religious properties that you wish to be taken into consideration before MMD makes a final determination on the CCP. This information is important in order for MMD to evaluate potential impacts and work toward developing avoidance or protection options. If you would like to initiate formal consultation about this application or to provide comments, please contact the undersigned within 30 days or by February 5, 2025, by phone at (505) 470-5354 or email at kevin.barnes@emnrd.nm.gov.

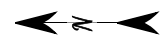
Sincerely,

Kevin Barnes, Permit Lead
Mining and Minerals Division

Enclosures (Project Vicinity Maps)
cc: Project File (GR009RE)

NOTES:

AERIAL IMAGERY: ESRI, MAXAR, EARTHSTAR GEOGRAPHICS, AND THE GIS USER COMMUNITY, WORLD IMAGERY 2024



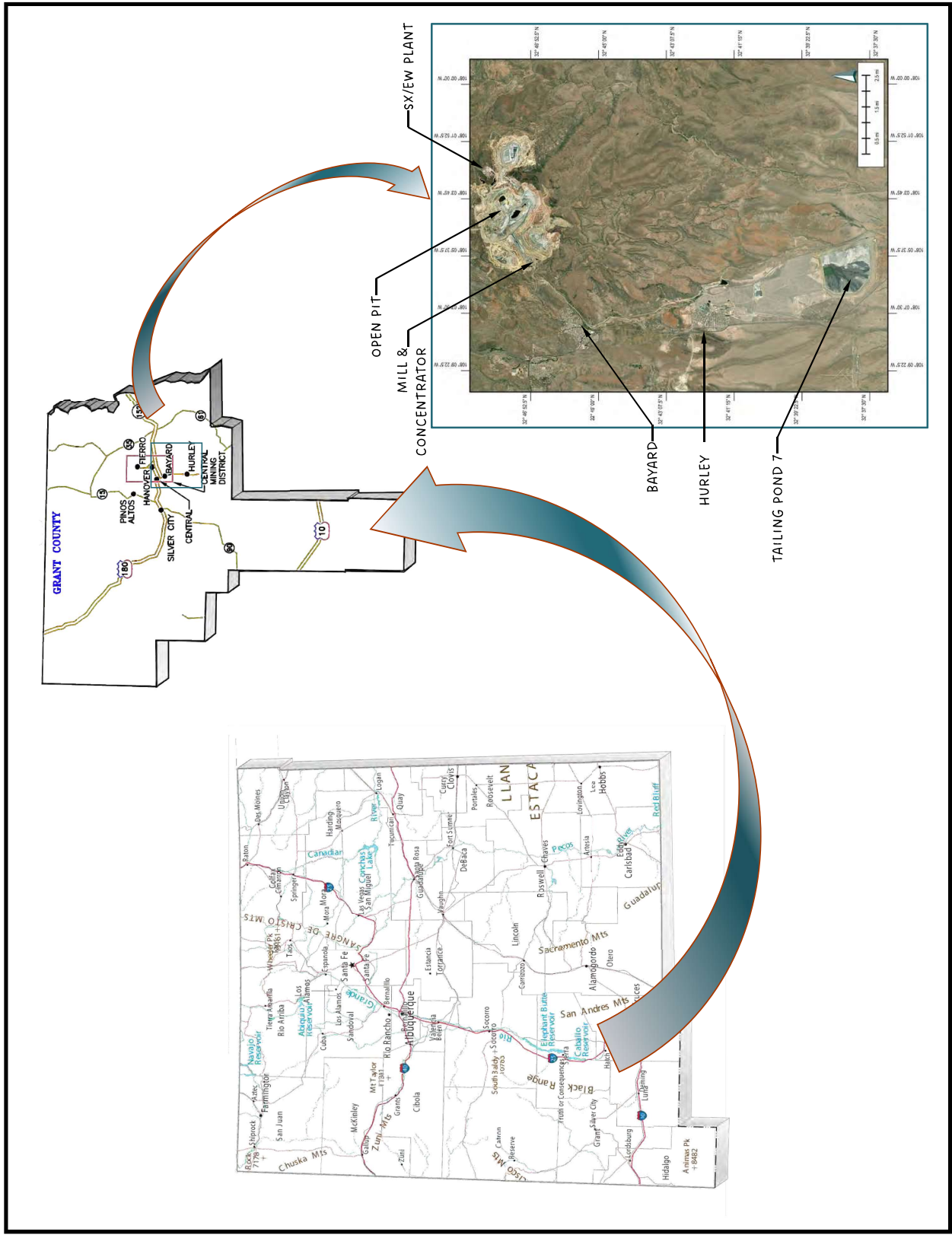
COORDINATE SYSTEM
GEOGRAPHIC

FIGURE 1
CHINO MINE LOCATION

PREPARED BY:



PREPARED FOR:



NOTES:

AERIAL IMAGERY: ESRI, MAXAR, EARTHSTAR GEOGRAPHICS, AND THE GIS USER COMMUNITY, WORLD IMAGERY 2024

QUADRANGLE MAPS: USGS NATIONAL MAP DATABASE

- MINE PERMIT BOUNDARY
- - - APPROX. DESIGN LIMIT BOUNDARY



**FIGURE 2
CHINO MINE GENERAL AREAS AND
PERMIT BOUNDARY**

PREPARED BY:

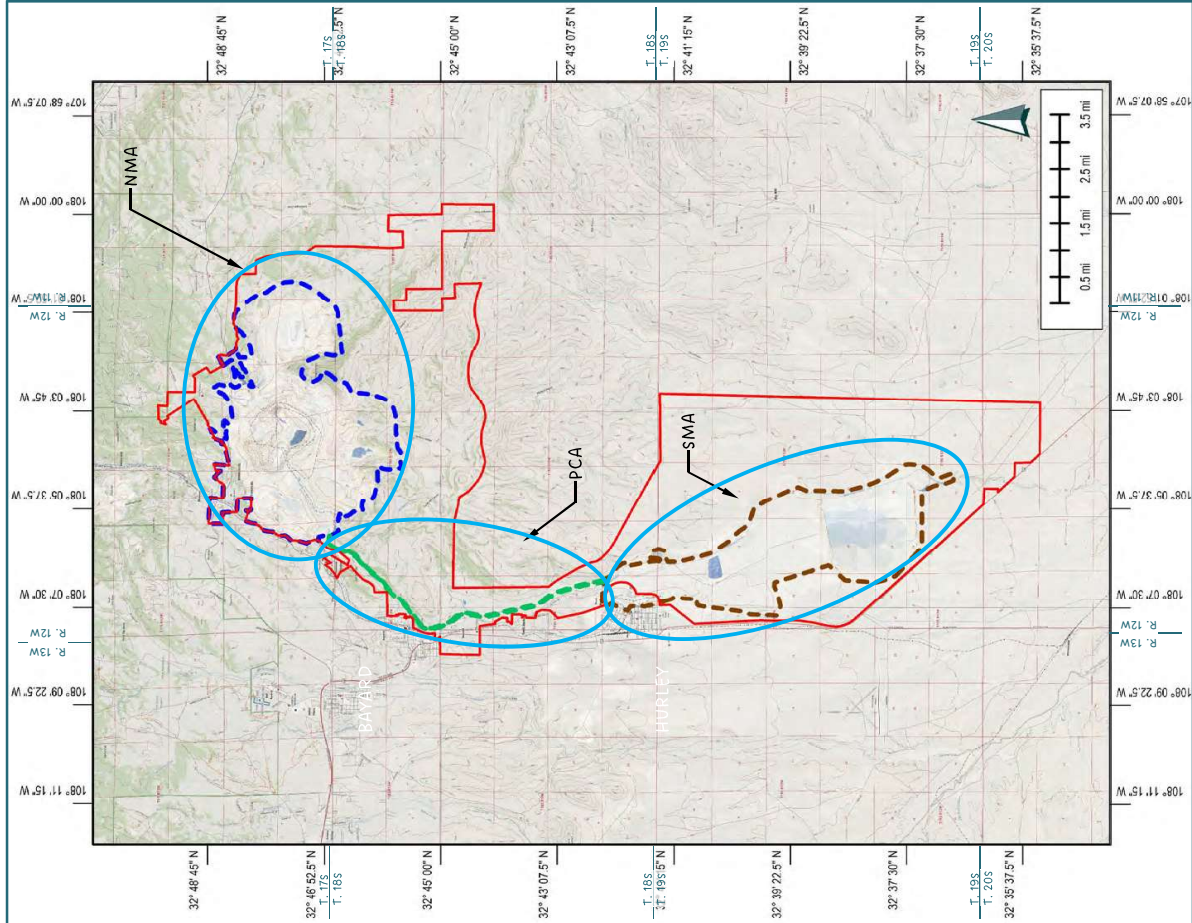


PREPARED FOR:



GENERAL EXTENTS OF MINE PERMIT BOUNDARY

- Township 17 South, Range 11 West: Sections 30 and 31;
- Township 17 South, Range 12 West: Sections 14, 15, 21, 22, 23, 24, 25, 26, 27, 28, 29, 32, 33, 34, 35 and 36
- Township 18 South, Range 13 West: Sections 12 and 13
- Township 18 South, Range 12 West: Sections 1, 2, 3, 4, 5, 6, 7, 8, 9, 10, 11, 12, 13, 14, 15, 16, 17, 18, 19, 29, 30, 31, 32, and 33
- Township 18 South, Range 11 West: Sections 6, 7, 8, 17, 18
- Township 19 South, Range 12 West: Sections 2, 3, 4, 5, 6, 7, 8, 9, 10, 11, 14, 15, 16, 17, 18, 19, 20, 21, 22, 23, 26, 27, 28, 29, 30, 32, 33, 34, and 35
- Township 20 South, Range 12 West: Sections 2, 3, and 4



State of New Mexico
Energy, Minerals and Natural Resources Department

Michelle Lujan Grisham
Governor

Melanie A. Kenderdine
Cabinet Secretary

Ben Shelton
Acting Deputy Secretary

Albert Chang, Director
Mining and Minerals Division



January 8, 2025

Chairman Kasey Velasquez
White Mountain Apache Tribe
P.O. Box 700
Whiteriver, AZ 85941

Re: Request for Comments on Chino Mine Closure/Closeout Plan Update, Chino Mine, Grant County, New Mexico, Permit No. GR009RE, Revision 24-2

Dear Chairman Velasquez,

The Mining and Minerals Division (“MMD”) of the New Mexico Energy, Minerals, and Natural Resources Department has received an application from Freeport-McMoRan Chino Mines Company (“FMI”) to update the Closure/Closeout Plan (“CCP”) for the Chino Mine. The CCP describes the work to be completed to reclaim the permit area, which includes regrading and reclaiming areas of disturbance including waste rock stockpiles, leach stockpiles, haul roads, and facilities. The CCP also includes plans for revegetation of the site to meet the post-mining land uses of livestock grazing, wildlife habitat, and industrial/commercial use.

The Chino Mine is a large-scale open pit copper mine located approximately 10 miles east of Silver City, New Mexico. Facilities associated with the Chino Mine include multiple waste rock and leach stockpiles, the Santa Rita open pit, a concentrator facility, mine tailings impoundments, a solution extraction-electrowinning plant, and other support facilities.

This notification is being submitted to you pursuant to 19.10.5.506 NMAC. Enclosed is a map showing the permit area for your reference. The CCP update can be viewed and downloaded in its entirety from the MMD website at this address: <https://www.emnrd.nm.gov/mmd/gr009re-chino-mine-modification-24-2-2024-ccp-update/>

MMD is offering to consult with you on this proposed CCP for the Chino Mine, in particular, to identify traditional cultural or religious properties that you wish to be taken into consideration before MMD makes a final determination on the CCP. This information is important in order for MMD to evaluate potential impacts and work toward developing avoidance or protection options. If you would like to initiate formal consultation about this application or to provide comments, please contact the undersigned within 30 days or by February 5, 2025, by phone at (505) 470-5354 or email at kevin.barnes@emnrd.nm.gov.

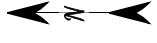
Sincerely,

Kevin Barnes, Permit Lead
Mining and Minerals Division

Enclosures (Project Vicinity Maps)
cc: Project File (GR009RE)

NOTES:

AERIAL IMAGERY: ESRI, MAXAR, EARTHSTAR GEOGRAPHICS, AND THE GIS USER COMMUNITY, WORLD IMAGERY 2024



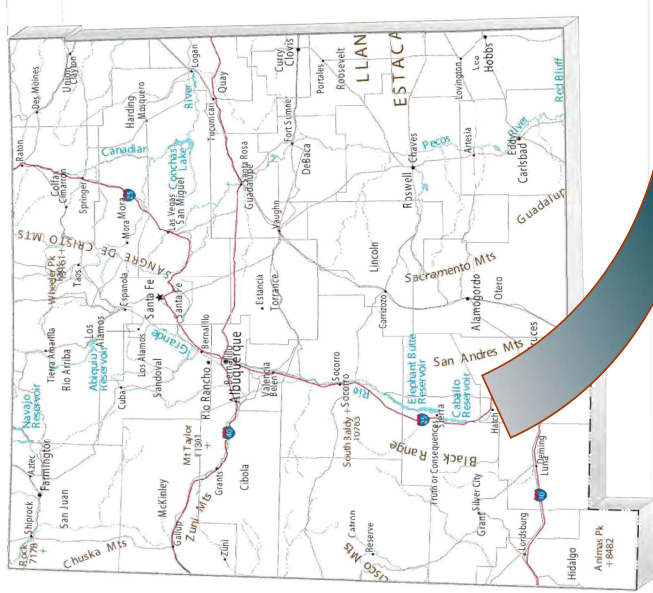
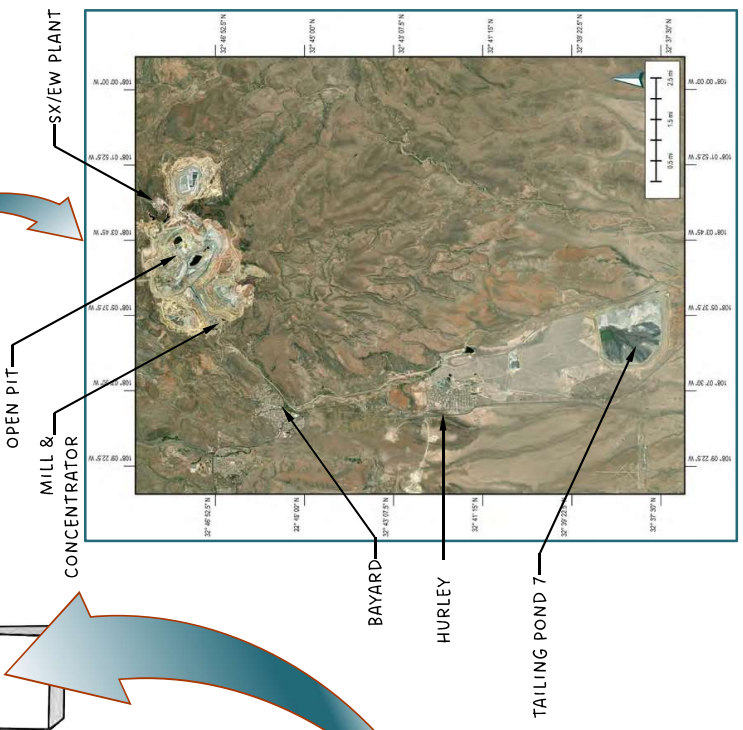
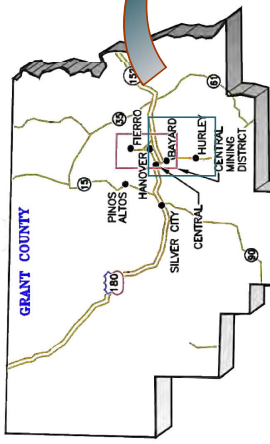
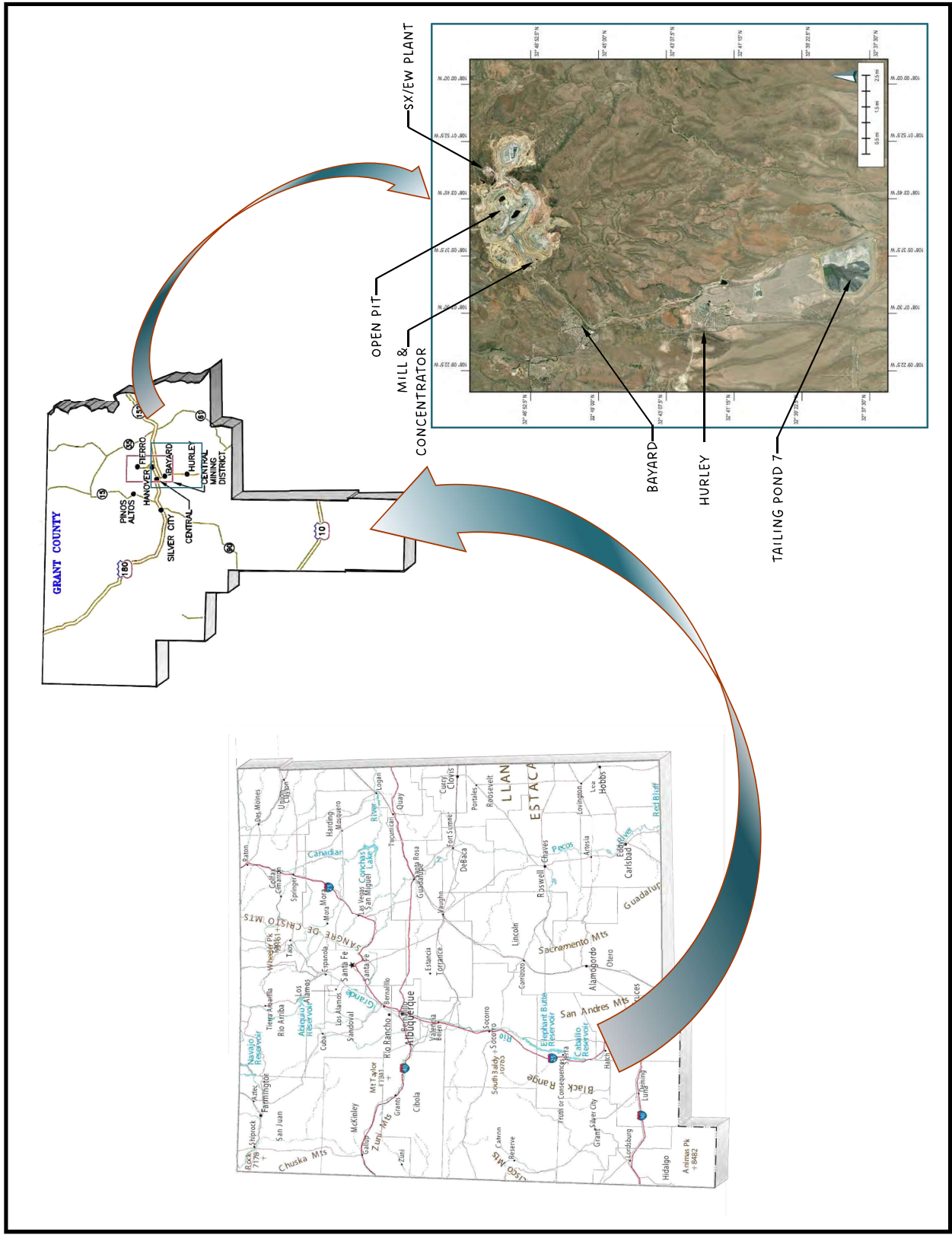
SCALE AS SHOWN
COORDINATE SYSTEM
GEOGRAPHIC

**FIGURE 1
CHINO MINE LOCATION**

PREPARED BY:



PREPARED FOR:



NOTES:

AERIAL IMAGERY: ESRI, MAXAR, EARTHSTAR GEOGRAPHICS, AND THE GIS USER COMMUNITY, WORLD IMAGERY 2024

QUADRANGLE MAPS: USGS NATIONAL MAP DATABASE

- MINE PERMIT BOUNDARY
- - - APPROX. DESIGN LIMIT BOUNDARY



FIGURE 2
CHINO MINE GENERAL AREAS AND PERMIT BOUNDARY

PREPARED BY:

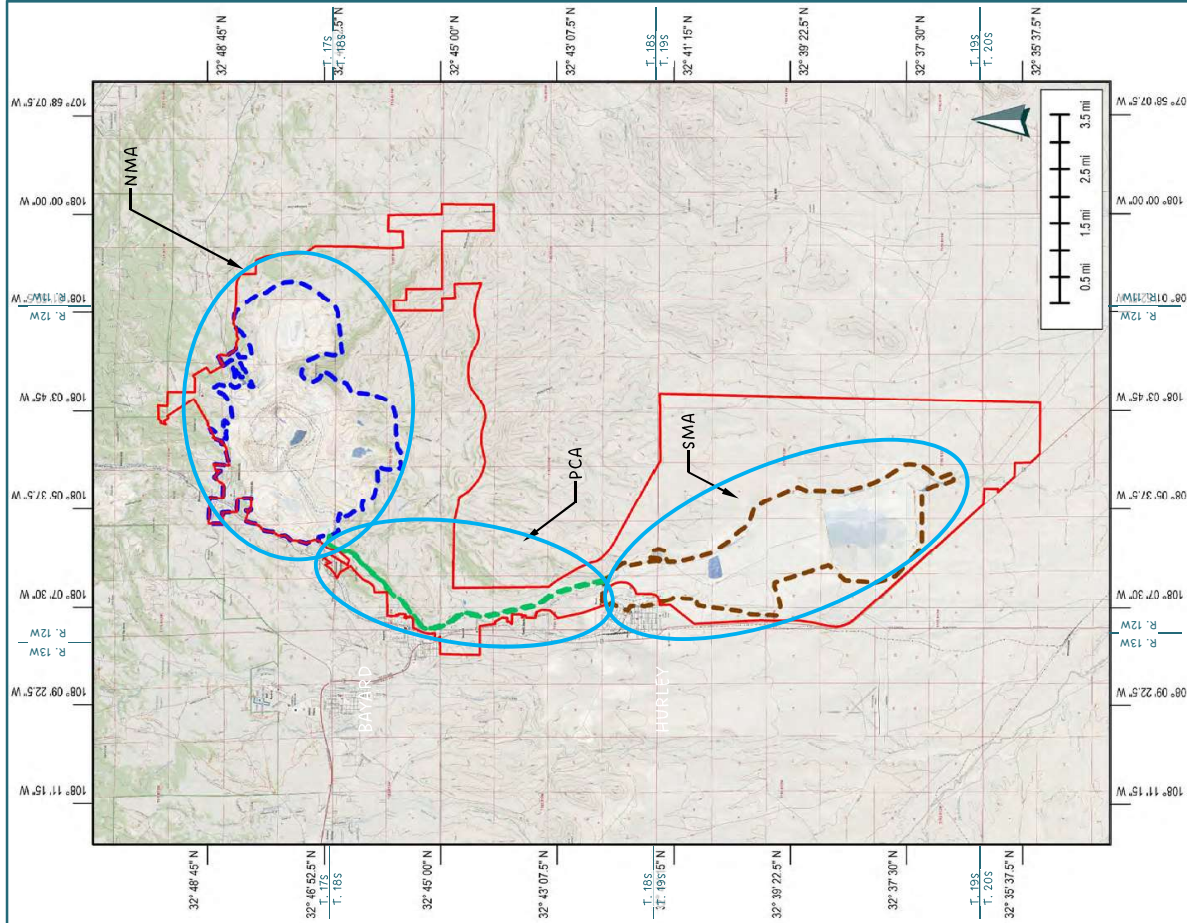


PREPARED FOR:



GENERAL EXTENTS OF MINE PERMIT BOUNDARY

- Township 17 South, Range 11 West: Sections 30 and 31;
- Township 17 South, Range 12 West: Sections 14, 15, 21, 22, 23, 24, 25, 26, 27, 28, 29, 32, 33, 34, 35 and 36
- Township 18 South, Range 13 West: Sections 12 and 13
- Township 18 South, Range 12 West: Sections 1, 2, 3, 4, 5, 6, 7, 8, 9, 10, 11, 12, 13, 14, 15, 16, 17, 18, 19, 29, 30, 31, 32, and 33
- Township 18 South, Range 11 West: Sections 6, 7, 8, 17, 18
- Township 19 South, Range 12 West: Sections 2, 3, 4, 5, 6, 7, 8, 9, 10, 11, 14, 15, 16, 17, 18, 19, 20, 21, 22, 23, 26, 27, 28, 29, 30, 32, 33, 34, and 35
- Township 20 South, Range 12 West: Sections 2, 3, and 4



State of New Mexico
Energy, Minerals and Natural Resources Department

Michelle Lujan Grisham
Governor

Melanie A. Kenderdine
Cabinet Secretary

Ben Shelton
Acting Deputy Secretary

Albert Chang, Director
Mining and Minerals Division



January 8, 2025

THPO Mark Altaha
White Mountain Apache Tribe
P.O. Box 1032
Fort Apache, AZ 85926

Re: Request for Comments on Chino Mine Closure/Closeout Plan Update, Chino Mine, Grant County, New Mexico, Permit No. GR009RE, Revision 24-2

Dear THPO Altaha,

The Mining and Minerals Division (“MMD”) of the New Mexico Energy, Minerals, and Natural Resources Department has received an application from Freeport-McMoRan Chino Mines Company (“FMI”) to update the Closure/Closeout Plan (“CCP”) for the Chino Mine. The CCP describes the work to be completed to reclaim the permit area, which includes regrading and reclaiming areas of disturbance including waste rock stockpiles, leach stockpiles, haul roads, and facilities. The CCP also includes plans for revegetation of the site to meet the post-mining land uses of livestock grazing, wildlife habitat, and industrial/commercial use.

The Chino Mine is a large-scale open pit copper mine located approximately 10 miles east of Silver City, New Mexico. Facilities associated with the Chino Mine include multiple waste rock and leach stockpiles, the Santa Rita open pit, a concentrator facility, mine tailings impoundments, a solution extraction-electrowinning plant, and other support facilities.

This notification is being submitted to you pursuant to 19.10.5.506 NMAC. Enclosed is a map showing the permit area for your reference. The CCP update can be viewed and downloaded in its entirety from the MMD website at this address: <https://www.emnrd.nm.gov/mmd/gr009re-chino-mine-modification-24-2-2024-ccp-update/>

MMD is offering to consult with you on this proposed CCP for the Chino Mine, in particular, to identify traditional cultural or religious properties that you wish to be taken into consideration before MMD makes a final determination on the CCP. This information is important in order for MMD to evaluate potential impacts and work toward developing avoidance or protection options. If you would like to initiate formal consultation about this application or to provide comments, please contact the undersigned within 30 days or by February 5, 2025, by phone at (505) 470-5354 or email at kevin.barnes@emnrd.nm.gov.

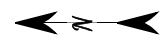
Sincerely,

Kevin Barnes, Permit Lead
Mining and Minerals Division

Enclosures (Project Vicinity Maps)
cc: Project File (GR009RE)

NOTES:

AERIAL IMAGERY: ESRI, MAXAR, EARTHSTAR GEOGRAPHICS, AND THE GIS USER COMMUNITY, WORLD IMAGERY 2024



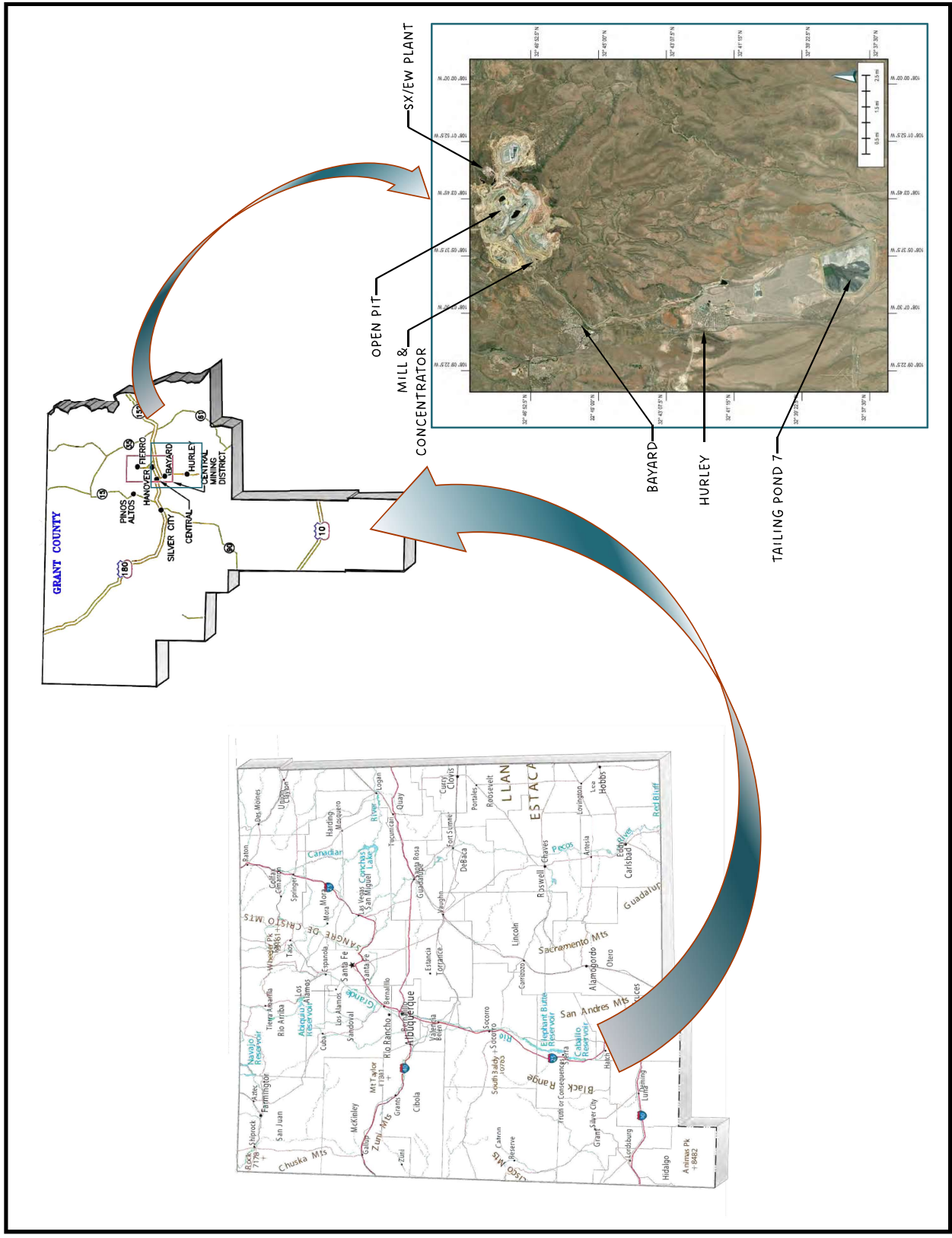
SCALE AS SHOWN
COORDINATE SYSTEM
GEOGRAPHIC

**FIGURE 1
CHINO MINE LOCATION**

PREPARED BY:



PREPARED FOR:



NOTES:

AERIAL IMAGERY: ESRI, MAXAR, EARTHSTAR GEOGRAPHICS, AND THE GIS USER COMMUNITY, WORLD IMAGERY 2024

QUADRANGLE MAPS: USGS NATIONAL MAP DATABASE

- MINE PERMIT BOUNDARY
- - - APPROX. DESIGN LIMIT BOUNDARY



**FIGURE 2
CHINO MINE GENERAL AREAS AND PERMIT BOUNDARY**

PREPARED BY:

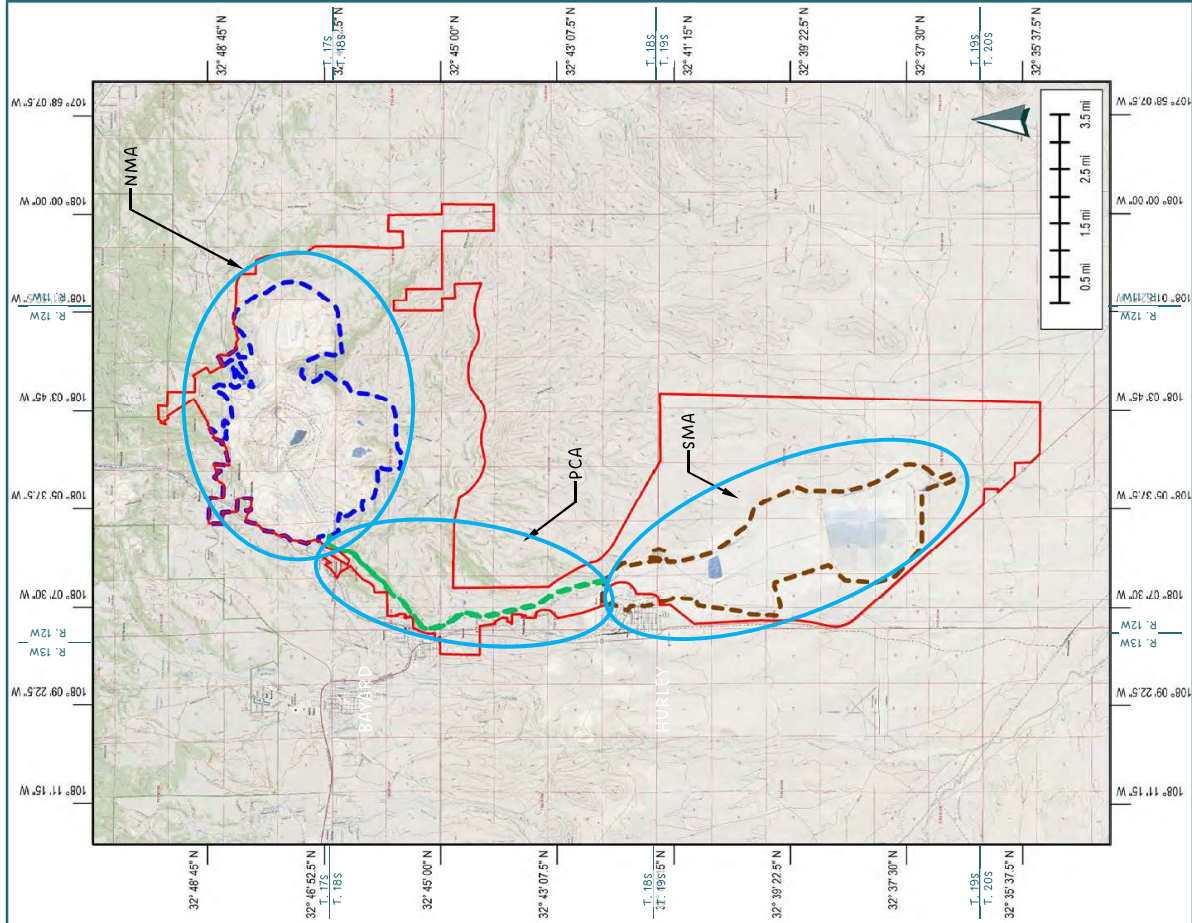


PREPARED FOR:



GENERAL EXTENTS OF MINE PERMIT BOUNDARY

- Township 17 South, Range 11 West: Sections 30 and 31;
- Township 17 South, Range 12 West: Sections 14, 15, 21, 22, 23, 24, 25, 26, 27, 28, 29, 32, 33, 34, 35 and 36
- Township 18 South, Range 13 West: Sections 12 and 13
- Township 18 South, Range 12 West: Sections 1, 2, 3, 4, 5, 6, 7, 8, 9, 10, 11, 12, 13, 14, 15, 16, 17, 18, 19, 29, 30, 31, 32, and 33
- Township 18 South, Range 11 West: Sections 6, 7, 8, 17, 18
- Township 19 South, Range 12 West: Sections 2, 3, 4, 5, 6, 7, 8, 9, 10, 11, 14, 15, 16, 17, 18, 19, 20, 21, 22, 23, 26, 27, 28, 29, 30, 32, 33, 34, and 35
- Township 20 South, Range 12 West: Sections 2, 3, and 4



State of New Mexico
Energy, Minerals and Natural Resources Department

Michelle Lujan Grisham
Governor

Melanie A. Kenderdine
Cabinet Secretary

Ben Shelton
Acting Deputy Secretary

Albert Chang, Director
Mining and Minerals Division



January 8, 2025

President Buu Nygren
Navajo Nation
P.O. Box 7440
Window Rock, AZ 86515

Re: Request for Comments on Chino Mine Closure/Closeout Plan Update, Chino Mine, Grant County, New Mexico, Permit No. GR009RE, Revision 24-2

Dear President Nygren,

The Mining and Minerals Division (“MMD”) of the New Mexico Energy, Minerals, and Natural Resources Department has received an application from Freeport-McMoRan Chino Mines Company (“FMI”) to update the Closure/Closeout Plan (“CCP”) for the Chino Mine. The CCP describes the work to be completed to reclaim the permit area, which includes regrading and reclaiming areas of disturbance including waste rock stockpiles, leach stockpiles, haul roads, and facilities. The CCP also includes plans for revegetation of the site to meet the post-mining land uses of livestock grazing, wildlife habitat, and industrial/commercial use.

The Chino Mine is a large-scale open pit copper mine located approximately 10 miles east of Silver City, New Mexico. Facilities associated with the Chino Mine include multiple waste rock and leach stockpiles, the Santa Rita open pit, a concentrator facility, mine tailings impoundments, a solution extraction-electrowinning plant, and other support facilities.

This notification is being submitted to you pursuant to 19.10.5.506 NMAC. Enclosed is a map showing the permit area for your reference. The CCP update can be viewed and downloaded in its entirety from the MMD website at this address: <https://www.emnrd.nm.gov/mmd/gr009re-chino-mine-modification-24-2-2024-ccp-update/>

MMD is offering to consult with you on this proposed CCP for the Chino Mine, in particular, to identify traditional cultural or religious properties that you wish to be taken into consideration before MMD makes a final determination on the CCP. This information is important in order for MMD to evaluate potential impacts and work toward developing avoidance or protection options. If you would like to initiate formal consultation about this application or to provide comments, please contact the undersigned within 30 days or by February 5, 2025, by phone at (505) 470-5354 or email at kevin.barnes@emnrd.nm.gov.

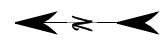
Sincerely,

Kevin Barnes, Permit Lead
Mining and Minerals Division

Enclosures (Project Vicinity Maps)
cc: Project File (GR009RE)

NOTES:

AERIAL IMAGERY: ESRI, MAXAR, EARTHSTAR GEOGRAPHICS, AND THE GIS USER COMMUNITY, WORLD IMAGERY 2024



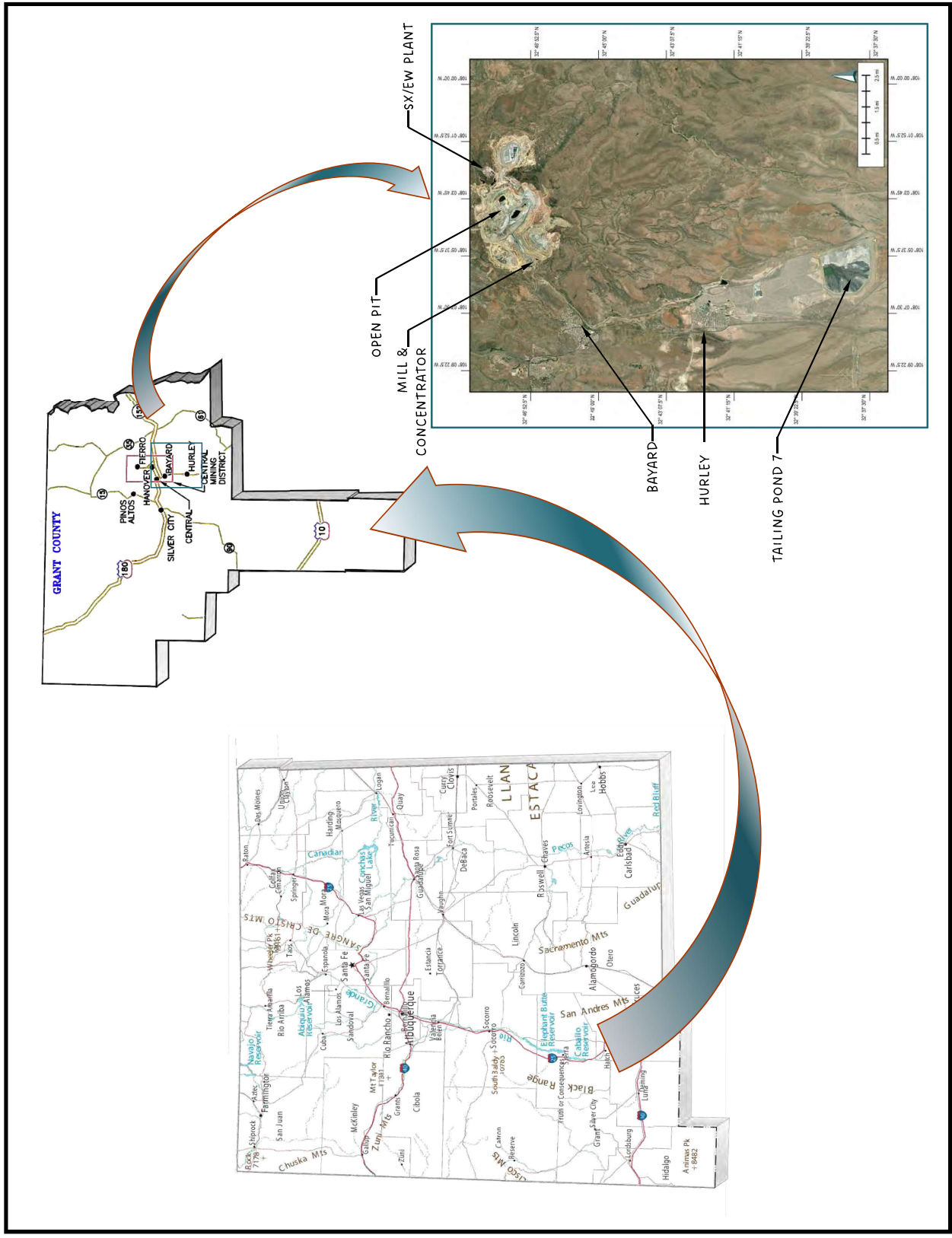
COORDINATE SYSTEM
GEOGRAPHIC

FIGURE 1
CHINO MINE LOCATION

PREPARED BY:



PREPARED FOR:



NOTES:

AERIAL IMAGERY: ESRI, MAXAR, EARTHSTAR GEOGRAPHICS, AND THE GIS USER COMMUNITY, WORLD IMAGERY 2024

QUADRANGLE MAPS: USGS NATIONAL MAP DATABASE

- MINE PERMIT BOUNDARY
- - - APPROX. DESIGN LIMIT BOUNDARY



**FIGURE 2
CHINO MINE GENERAL AREAS AND PERMIT BOUNDARY**

PREPARED BY:

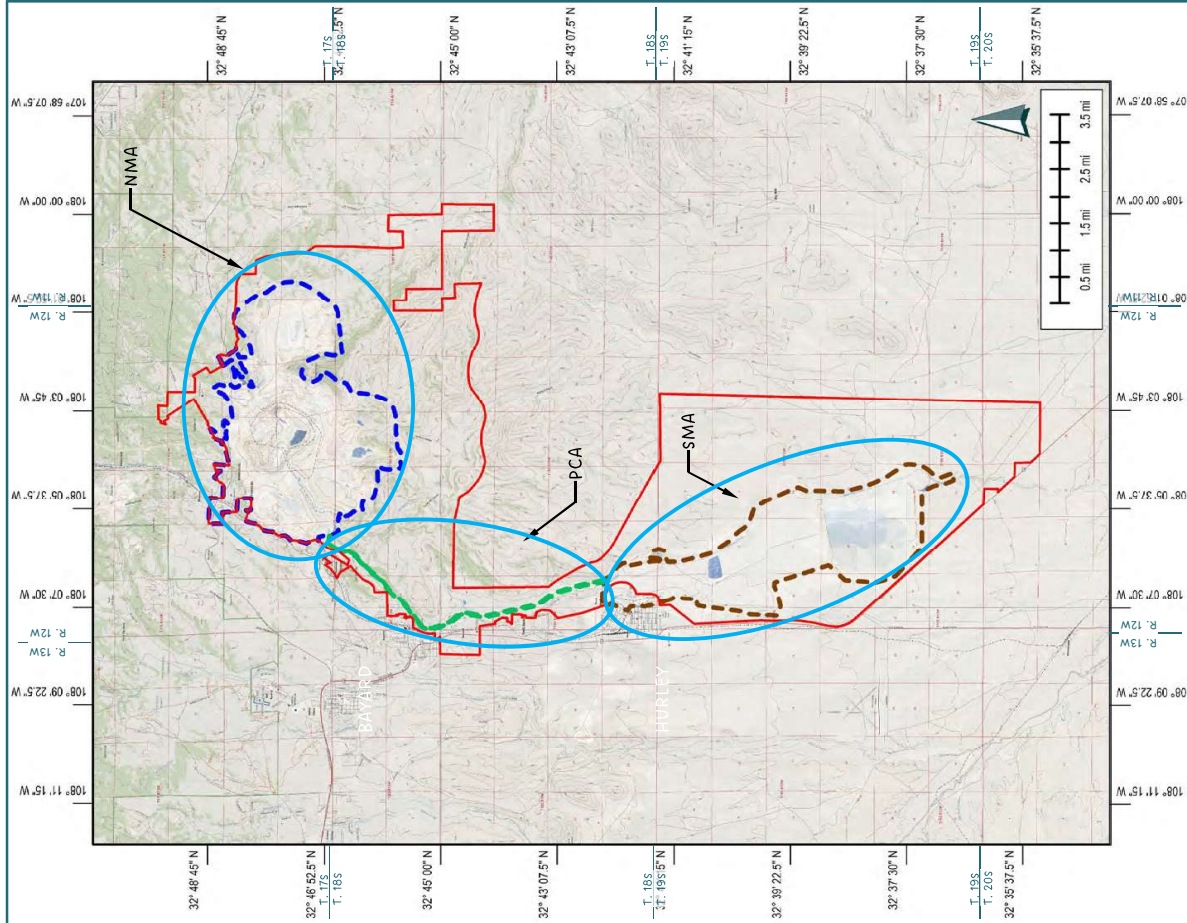


PREPARED FOR:



GENERAL EXTENTS OF MINE PERMIT BOUNDARY

- Township 17 South, Range 11 West: Sections 30 and 31;
- Township 17 South, Range 12 West: Sections 14, 15, 21, 22, 23, 24, 25, 26, 27, 28, 29, 32, 33, 34, 35 and 36
- Township 18 South, Range 13 West: Sections 12 and 13
- Township 18 South, Range 12 West: Sections 1, 2, 3, 4, 5, 6, 7, 8, 9, 10, 11, 12, 13, 14, 15, 16, 17, 18, 19, 29, 30, 31, 32, and 33
- Township 18 South, Range 11 West: Sections 6, 7, 8, 17, 18
- Township 19 South, Range 12 West: Sections 2, 3, 4, 5, 6, 7, 8, 9, 10, 11, 14, 15, 16, 17, 18, 19, 20, 21, 22, 23, 26, 27, 28, 29, 30, 32, 33, 34, and 35
- Township 20 South, Range 12 West: Sections 2, 3, and 4



State of New Mexico
Energy, Minerals and Natural Resources Department

Michelle Lujan Grisham
Governor

Melanie A. Kenderdine
Cabinet Secretary

Ben Shelton
Acting Deputy Secretary

Albert Chang, Director
Mining and Minerals Division



January 8, 2025

THPO Richard M. Begay
Navajo Nation Historic Preservation Division
P.O. Box 4950
Window Rock, AZ 86515

Re: Request for Comments on Chino Mine Closure/Closeout Plan Update, Chino Mine, Grant County, New Mexico, Permit No. GR009RE, Revision 24-2

Dear THPO Begay,

The Mining and Minerals Division (“MMD”) of the New Mexico Energy, Minerals, and Natural Resources Department has received an application from Freeport-McMoRan Chino Mines Company (“FMI”) to update the Closure/Closeout Plan (“CCP”) for the Chino Mine. The CCP describes the work to be completed to reclaim the permit area, which includes regrading and reclaiming areas of disturbance including waste rock stockpiles, leach stockpiles, haul roads, and facilities. The CCP also includes plans for revegetation of the site to meet the post-mining land uses of livestock grazing, wildlife habitat, and industrial/commercial use.

The Chino Mine is a large-scale open pit copper mine located approximately 10 miles east of Silver City, New Mexico. Facilities associated with the Chino Mine include multiple waste rock and leach stockpiles, the Santa Rita open pit, a concentrator facility, mine tailings impoundments, a solution extraction-electrowinning plant, and other support facilities.

This notification is being submitted to you pursuant to 19.10.5.506 NMAC. Enclosed is a map showing the permit area for your reference. The CCP update can be viewed and downloaded in its entirety from the MMD website at this address: <https://www.emnrd.nm.gov/mmd/gr009re-chino-mine-modification-24-2-2024-ccp-update/>

MMD is offering to consult with you on this proposed CCP for the Chino Mine, in particular, to identify traditional cultural or religious properties that you wish to be taken into consideration before MMD makes a final determination on the CCP. This information is important in order for MMD to evaluate potential impacts and work toward developing avoidance or protection options. If you would like to initiate formal consultation about this application or to provide comments, please contact the undersigned within 30 days or by February 5, 2025, by phone at (505) 470-5354 or email at kevin.barnes@emnrd.nm.gov.

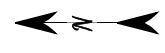
Sincerely,

Kevin Barnes, Permit Lead
Mining and Minerals Division

Enclosures (Project Vicinity Maps)
cc: Project File (GR009RE)

NOTES:

AERIAL IMAGERY: ESRI, MAXAR, EARTHSTAR GEOGRAPHICS, AND THE GIS USER COMMUNITY, WORLD IMAGERY 2024



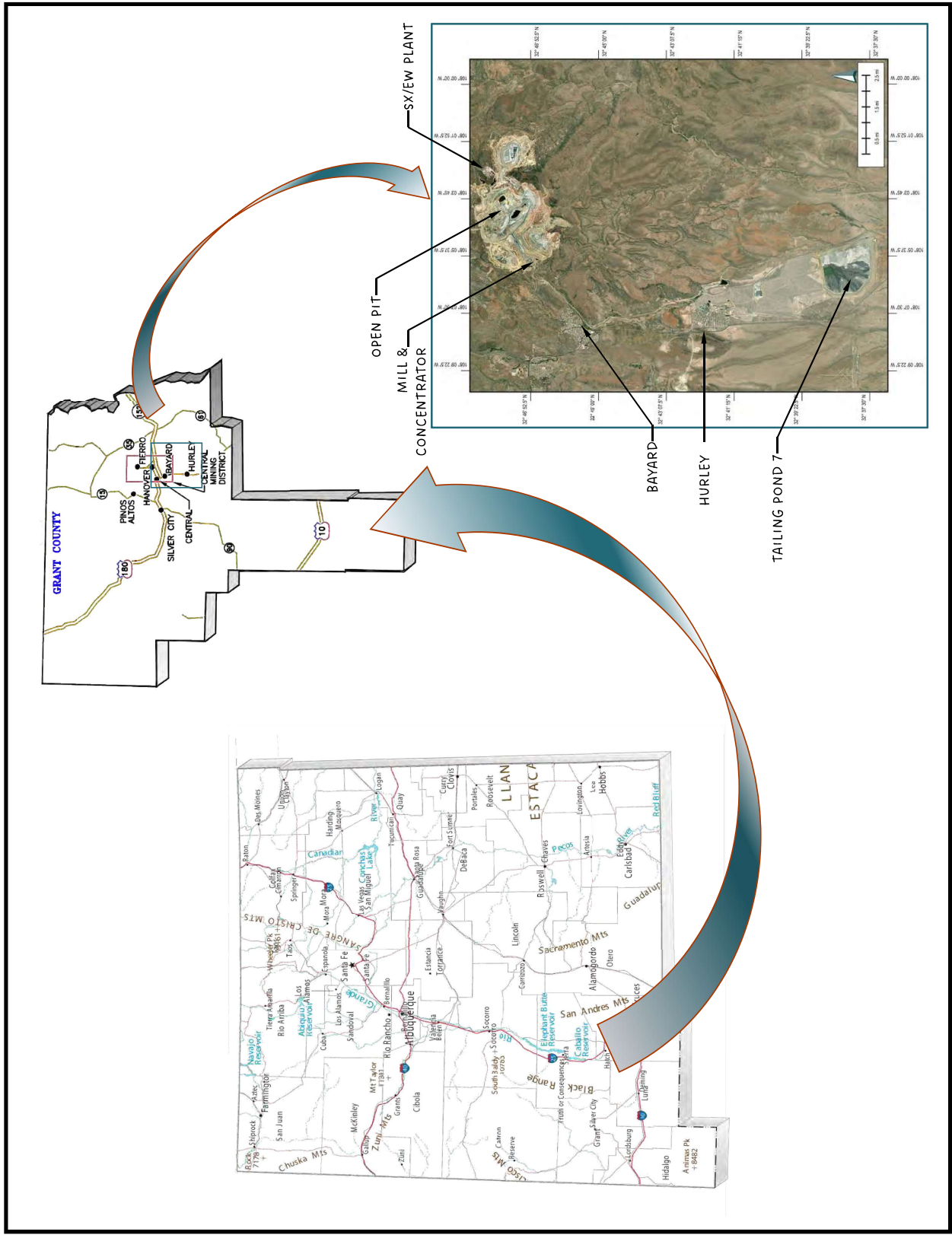
SCALE AS SHOWN
COORDINATE SYSTEM
GEOGRAPHIC

**FIGURE 1
CHINO MINE LOCATION**

PREPARED BY:



PREPARED FOR:



NOTES:

AERIAL IMAGERY: ESRI, MAXAR, EARTHSTAR GEOGRAPHICS, AND THE GIS USER COMMUNITY, WORLD IMAGERY 2024

QUADRANGLE MAPS: USGS NATIONAL MAP DATABASE

- MINE PERMIT BOUNDARY
- - - APPROX. DESIGN LIMIT BOUNDARY



**FIGURE 2
CHINO MINE GENERAL AREAS AND PERMIT BOUNDARY**

PREPARED BY:

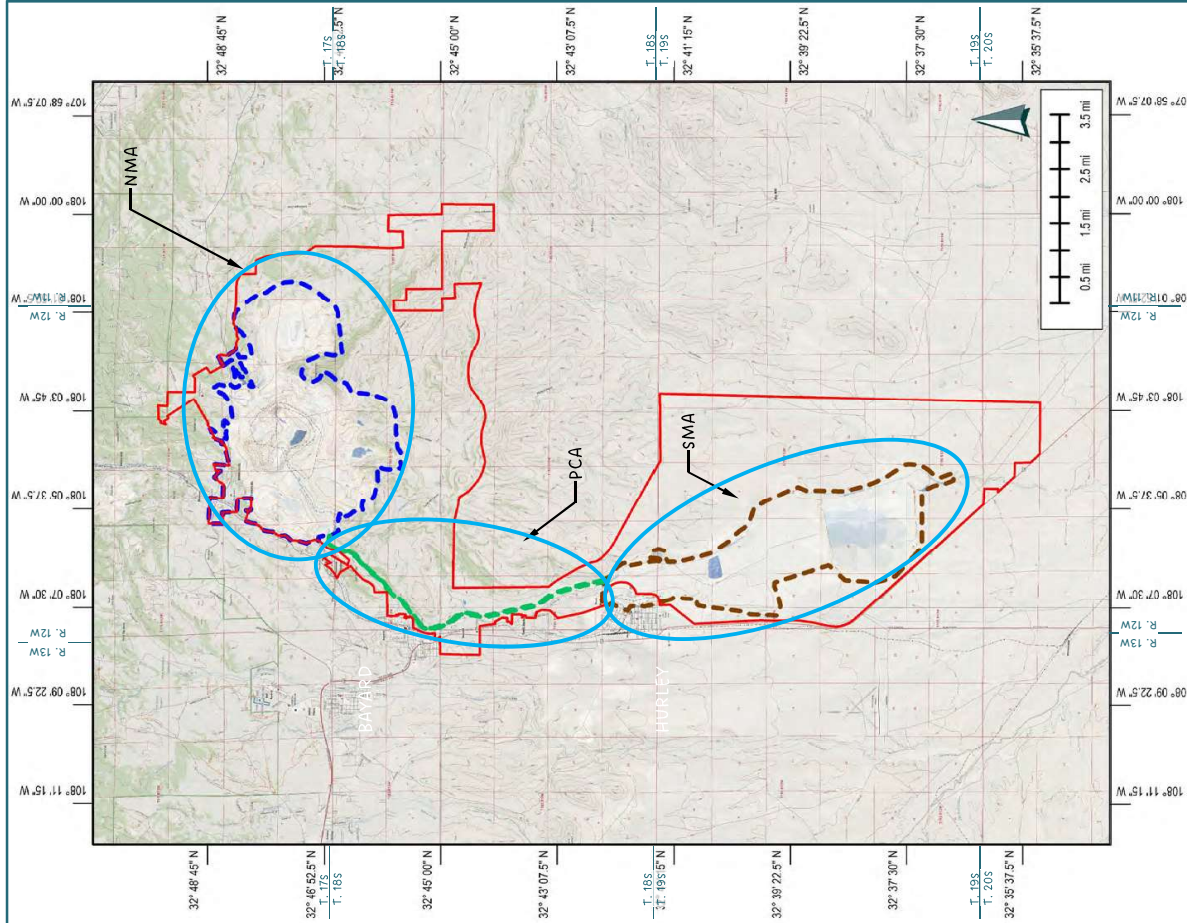


PREPARED FOR:



GENERAL EXTENTS OF MINE PERMIT BOUNDARY

- Township 17 South, Range 11 West: Sections 30 and 31;
- Township 17 South, Range 12 West: Sections 14, 15, 21, 22, 23, 24, 25, 26, 27, 28, 29, 32, 33, 34, 35 and 36
- Township 18 South, Range 13 West: Sections 12 and 13
- Township 18 South, Range 12 West: Sections 1, 2, 3, 4, 5, 6, 7, 8, 9, 10, 11, 12, 13, 14, 15, 16, 17, 18, 19, 29, 30, 31, 32, and 33
- Township 18 South, Range 11 West: Sections 6, 7, 8, 17, 18
- Township 19 South, Range 12 West: Sections 2, 3, 4, 5, 6, 7, 8, 9, 10, 11, 14, 15, 16, 17, 18, 19, 20, 21, 22, 23, 26, 27, 28, 29, 30, 32, 33, 34, and 35
- Township 20 South, Range 12 West: Sections 2, 3, and 4



State of New Mexico
Energy, Minerals and Natural Resources Department

Michelle Lujan Grisham
Governor

Melanie A. Kenderdine
Cabinet Secretary

Ben Shelton
Acting Deputy Secretary

Albert Chang, Director
Mining and Minerals Division



January 8, 2025

Chairman Timothy L. Nuvangyaoma
The Hopi Tribe
P.O. Box 123
Kykotsmovi, AZ 86039

Re: Request for Comments on Chino Mine Closure/Closeout Plan Update, Chino Mine, Grant County, New Mexico, Permit No. GR009RE, Revision 24-2

Dear Chairman Nuvangyaoma,

The Mining and Minerals Division (“MMD”) of the New Mexico Energy, Minerals, and Natural Resources Department has received an application from Freeport-McMoRan Chino Mines Company (“FMI”) to update the Closure/Closeout Plan (“CCP”) for the Chino Mine. The CCP describes the work to be completed to reclaim the permit area, which includes regrading and reclaiming areas of disturbance including waste rock stockpiles, leach stockpiles, haul roads, and facilities. The CCP also includes plans for revegetation of the site to meet the post-mining land uses of livestock grazing, wildlife habitat, and industrial/commercial use.

The Chino Mine is a large-scale open pit copper mine located approximately 10 miles east of Silver City, New Mexico. Facilities associated with the Chino Mine include multiple waste rock and leach stockpiles, the Santa Rita open pit, a concentrator facility, mine tailings impoundments, a solution extraction-electrowinning plant, and other support facilities.

This notification is being submitted to you pursuant to 19.10.5.506 NMAC. Enclosed is a map showing the permit area for your reference. The CCP update can be viewed and downloaded in its entirety from the MMD website at this address: <https://www.emnrd.nm.gov/mmd/gr009re-chino-mine-modification-24-2-2024-ccp-update/>

MMD is offering to consult with you on this proposed CCP for the Chino Mine, in particular, to identify traditional cultural or religious properties that you wish to be taken into consideration before MMD makes a final determination on the CCP. This information is important in order for MMD to evaluate potential impacts and work toward developing avoidance or protection options. If you would like to initiate formal consultation about this application or to provide comments, please contact the undersigned within 30 days or by February 5, 2025, by phone at (505) 470-5354 or email at kevin.barnes@emnrd.nm.gov.

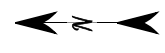
Sincerely,

Kevin Barnes, Permit Lead
Mining and Minerals Division

Enclosures (Project Vicinity Maps)
cc: Project File (GR009RE)

NOTES:

AERIAL IMAGERY: ESRI, MAXAR, EARTHSTAR GEOGRAPHICS, AND THE GIS USER COMMUNITY, WORLD IMAGERY 2024



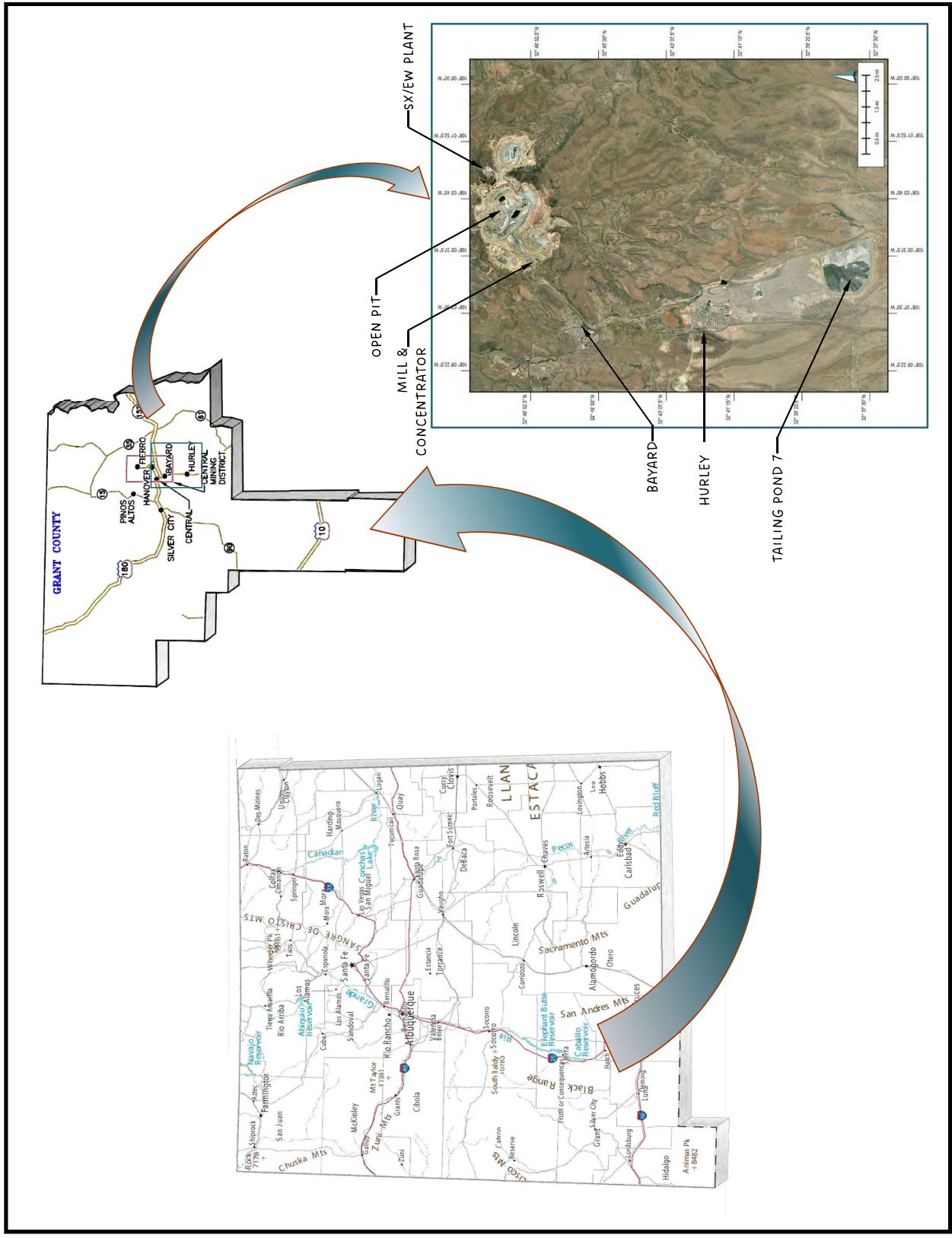
SCALE AS SHOWN
COORDINATE SYSTEM
GEOGRAPHIC

**FIGURE 1
CHINO MINE LOCATION**

PREPARED BY:



PREPARED FOR:



NOTES:

AERIAL IMAGERY: ESRI, MAXAR, EARTHSTAR GEOGRAPHICS, AND THE GIS USER COMMUNITY, WORLD IMAGERY 2024

QUADRANGLE MAPS: USGS NATIONAL MAP DATABASE

- MINE PERMIT BOUNDARY
- - - APPROX. DESIGN LIMIT BOUNDARY



**FIGURE 2
CHINO MINE GENERAL AREAS AND PERMIT BOUNDARY**

PREPARED BY:

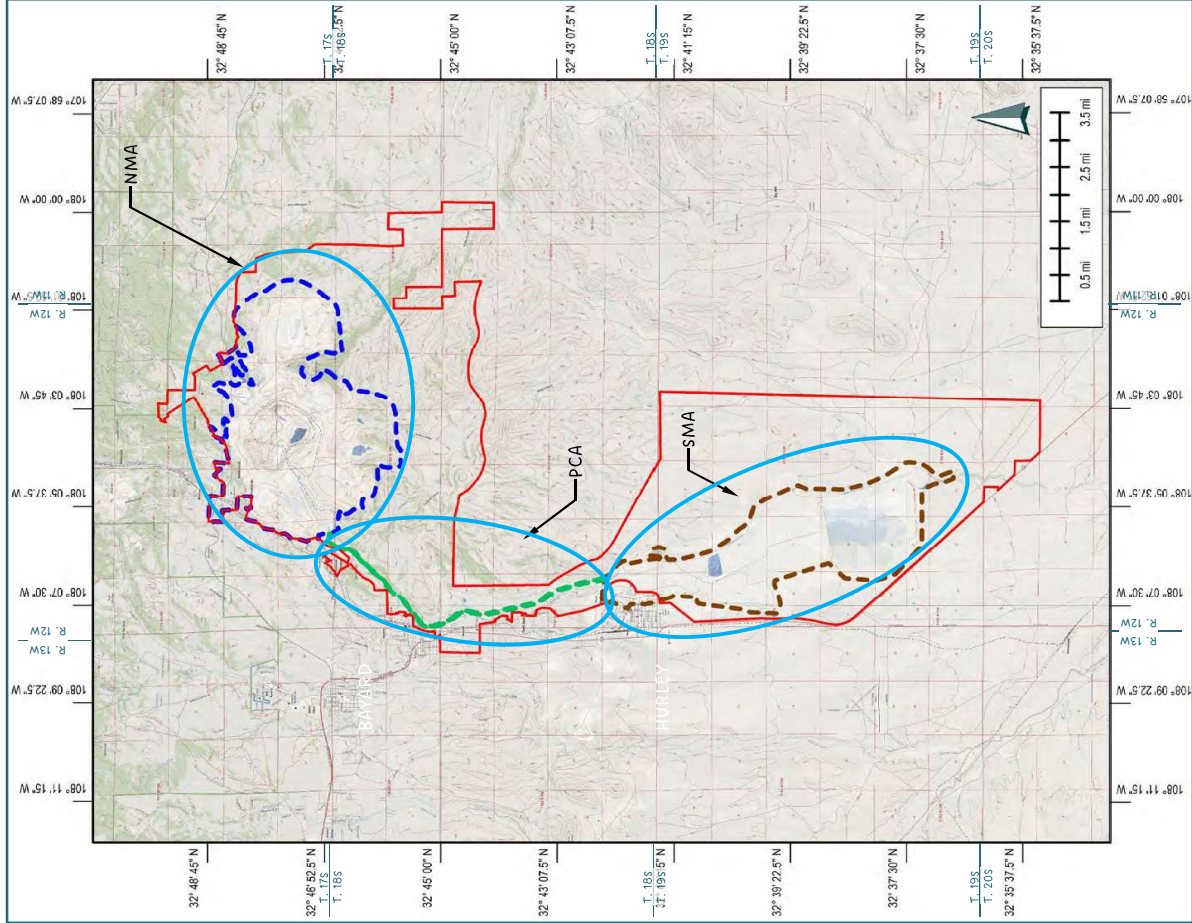


PREPARED FOR:



GENERAL EXTENTS OF MINE PERMIT BOUNDARY

- Township 17 South, Range 11 West: Sections 30 and 31;
- Township 17 South, Range 12 West: Sections 14, 15, 21, 22, 23, 24, 25, 26, 27, 28, 29, 32, 33, 34, 35 and 36
- Township 18 South, Range 13 West: Sections 12 and 13
- Township 18 South, Range 12 West: Sections 1, 2, 3, 4, 5, 6, 7, 8, 9, 10, 11, 12, 13, 14, 15, 16, 17, 18, 19, 29, 30, 31, 32, and 33
- Township 18 South, Range 11 West: Sections 6, 7, 8, 17, 18
- Township 19 South, Range 12 West: Sections 2, 3, 4, 5, 6, 7, 8, 9, 10, 11, 14, 15, 16, 17, 18, 19, 20, 21, 22, 23, 26, 27, 28, 29, 30, 32, 33, 34, and 35
- Township 20 South, Range 12 West: Sections 2, 3, and 4



State of New Mexico
Energy, Minerals and Natural Resources Department

Michelle Lujan Grisham
Governor

Melanie A. Kenderdine
Cabinet Secretary

Ben Shelton
Acting Deputy Secretary

Albert Chang, Director
Mining and Minerals Division



January 8, 2025

Director Stewart Koyiyumptewa
The Hopi Tribe Cultural Preservation Office
P.O. Box 123
Kykotsmovi, AZ 86039

Re: Request for Comments on Chino Mine Closure/Closeout Plan Update, Chino Mine, Grant County, New Mexico, Permit No. GR009RE, Revision 24-2

Dear Director Koyiyumptewa,

The Mining and Minerals Division (“MMD”) of the New Mexico Energy, Minerals, and Natural Resources Department has received an application from Freeport-McMoRan Chino Mines Company (“FMI”) to update the Closure/Closeout Plan (“CCP”) for the Chino Mine. The CCP describes the work to be completed to reclaim the permit area, which includes regrading and reclaiming areas of disturbance including waste rock stockpiles, leach stockpiles, haul roads, and facilities. The CCP also includes plans for revegetation of the site to meet the post-mining land uses of livestock grazing, wildlife habitat, and industrial/commercial use.

The Chino Mine is a large-scale open pit copper mine located approximately 10 miles east of Silver City, New Mexico. Facilities associated with the Chino Mine include multiple waste rock and leach stockpiles, the Santa Rita open pit, a concentrator facility, mine tailings impoundments, a solution extraction-electrowinning plant, and other support facilities.

This notification is being submitted to you pursuant to 19.10.5.506 NMAC. Enclosed is a map showing the permit area for your reference. The CCP update can be viewed and downloaded in its entirety from the MMD website at this address: <https://www.emnrd.nm.gov/mmd/gr009re-chino-mine-modification-24-2-2024-ccp-update/>

MMD is offering to consult with you on this proposed CCP for the Chino Mine, in particular, to identify traditional cultural or religious properties that you wish to be taken into consideration before MMD makes a final determination on the CCP. This information is important in order for MMD to evaluate potential impacts and work toward developing avoidance or protection options. If you would like to initiate formal consultation about this application or to provide comments, please contact the undersigned within 30 days or by February 5, 2025, by phone at (505) 470-5354 or email at kevin.barnes@emnrd.nm.gov.

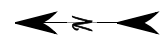
Sincerely,

Kevin Barnes, Permit Lead
Mining and Minerals Division

Enclosures (Project Vicinity Maps)
cc: Project File (GR009RE)

NOTES:

AERIAL IMAGERY: ESRI, MAXAR, EARTHSTAR GEOGRAPHICS, AND THE GIS USER COMMUNITY, WORLD IMAGERY 2024



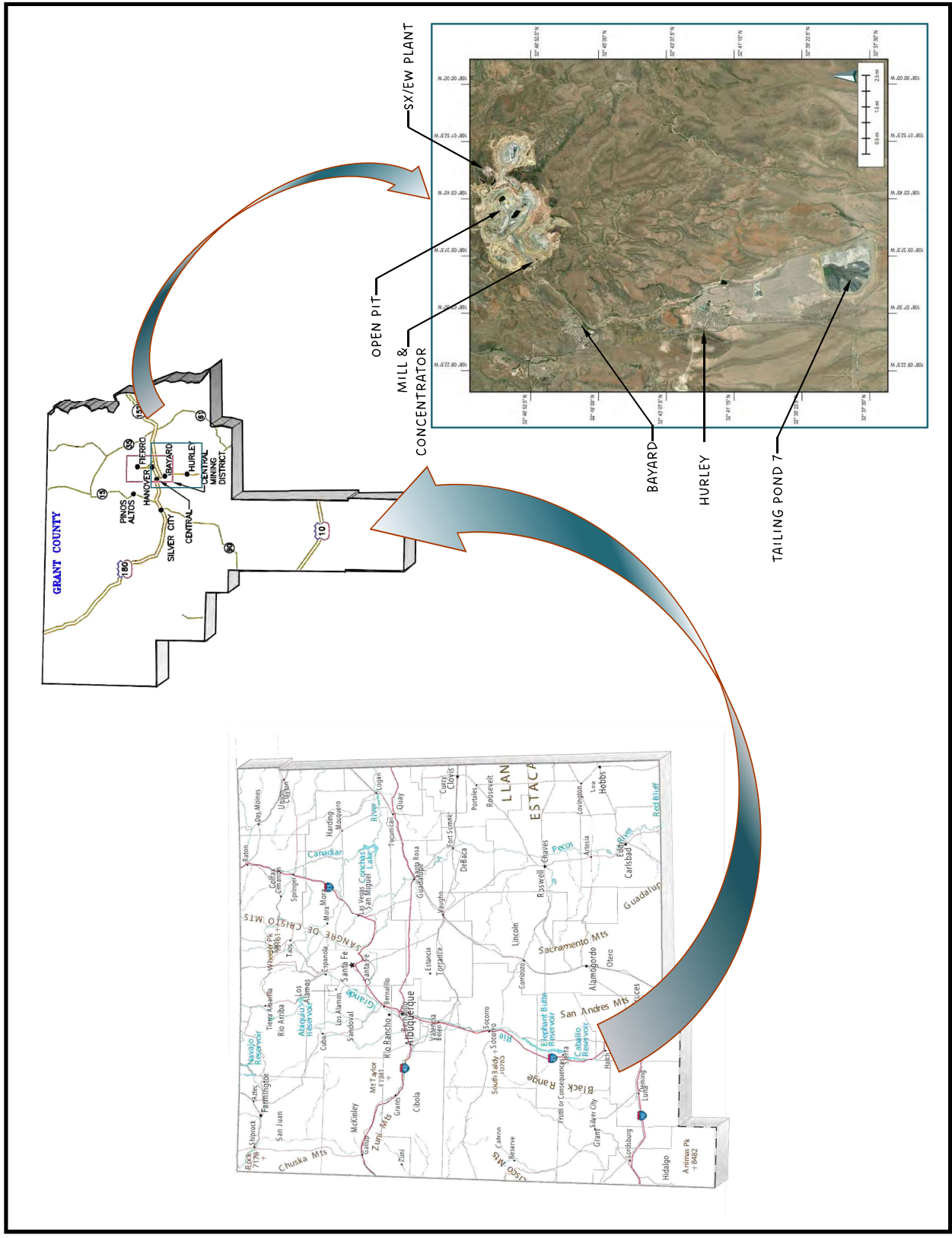
SCALE AS SHOWN
COORDINATE SYSTEM
GEOGRAPHIC

**FIGURE 1
CHINO MINE LOCATION**

PREPARED BY:



PREPARED FOR:



NOTES:

AERIAL IMAGERY: ESRI, MAXAR, EARTHSTAR GEOGRAPHICS, AND THE GIS USER COMMUNITY, WORLD IMAGERY 2024

QUADRANGLE MAPS: USGS NATIONAL MAP DATABASE

- MINE PERMIT BOUNDARY
- - - APPROX. DESIGN LIMIT BOUNDARY



**FIGURE 2
CHINO MINE GENERAL AREAS AND PERMIT BOUNDARY**

PREPARED BY:



PREPARED FOR:



GENERAL EXTENTS OF MINE PERMIT BOUNDARY

- Township 17 South, Range 11 West: Sections 30 and 31;
- Township 17 South, Range 12 West: Sections 14, 15, 21, 22, 23, 24, 25, 26, 27, 28, 29, 32, 33, 34, 35 and 36
- Township 18 South, Range 13 West: Sections 12 and 13
- Township 18 South, Range 12 West: Sections 1, 2, 3, 4, 5, 6, 7, 8, 9, 10, 11, 12, 13, 14, 15, 16, 17, 18, 19, 29, 30, 31, 32, and 33
- Township 18 South, Range 11 West: Sections 6, 7, 8, 17, 18
- Township 19 South, Range 12 West: Sections 2, 3, 4, 5, 6, 7, 8, 9, 10, 11, 14, 15, 16, 17, 18, 19, 20, 21, 22, 23, 26, 27, 28, 29, 30, 32, 33, 34, and 35
- Township 20 South, Range 12 West: Sections 2, 3, and 4

