

Harding Mine Modification 24-1 Synopsis Permit No. SI025MN

Modification 12-1 Approved removal of cement pad, plugging the shaft, and removal of the shed. See below plan. Modification 24-1 will be modifying the plan in accordance with BLM approval of leaving the cement pad in place and not backfilling.

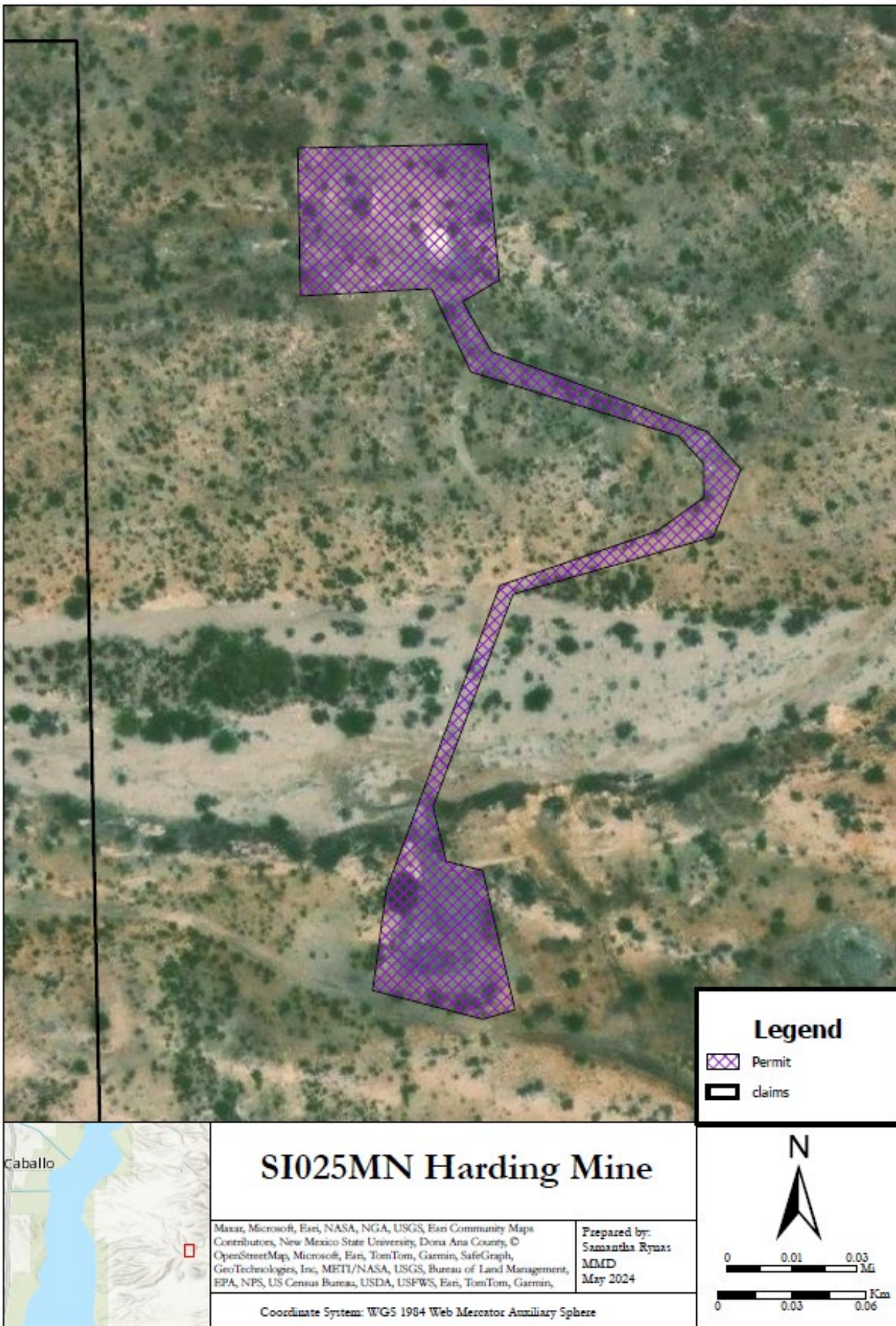
Permit Modification 12-1 to Permit SI025MN:

Approves the siting of a single-room, metal building structure over the Harding Mine Shaft, replacing a previously existing wood and tin building that was fully dismantled and removed from the site, prior to siting the replacement metal building structure. The new structure is painted in a "covert green" color on all four sides and doors, including the roof, to decrease its visibility and lies situated upon a six-inch thick concrete slab. The structure has been erected over the mine shaft collar to provide temporary, on-site secure storage for safety and mine shaft ventilation equipment, tools, bucket hoist and other mining supplies and to also provide temporary shelter from the elements for mine workers during mining activity at the site. The metal building structure also safeguards the mine entry and prevents unauthorized human and animal access to the underground workings. **The building structure will be disassembled and removed from the permit area during final closure and reclamation of the site. The concrete slab will be broken up into fragments and used as backfill material prior to polyurethane foam plug installation in shaft opening, prior to final grading and site contouring.**

III. The following Subparagraphs within Section 10 of Permit SI025MN are deleted in their entirety and the following substituted therefor:

3. Following cessation of mining activity, the shaft will be plugged and backfilled, then the surface will be re-graded to achieve positive surface drainage and also recontoured to match the existing land surface and topography. Shaft closure and surface reclamation of the permit area will consist of emplacing an eleven foot by four foot plug (11 feet by 4 feet; approx. 5.1 yd³) of polyurethane foam (PUF), within the interior of the shaft, then followed by welding a steel plate over the plugged shaft then **backfilling and grading the area to re-contour and match the surrounding natural topography and to achieve positive drainage.** All surface structures or equipment will be removed and all surface disturbances will be reclaimed in accordance with the reclamation plan provided in the PAP. The building structure will be disassembled and removed from the permit area during final closure and reclamation of the site. **The concrete slab will be broken up into fragments and used as backfill material prior to polyurethane foam plug installation in shaft opening, prior to final grading and site contouring in accordance with the reclamation plan in the PMP.**

Map:



Email Chain beginning December 2, 2024

- Request to close shaft
- BLM decision to not backfill the shaft, but approved leaving the cement pad in place.
- Request to end permit

From: michael@sawni.net
To: [Rynas, Samantha, EMNRD](#)
Subject: [EXTERNAL] Harding Mine S1025MN Modification request
Date: Monday, December 2, 2024 11:16:28 AM

CAUTION: This email originated outside of our organization. Exercise caution prior to clicking on links or opening attachments.

Ms Rynas

Please accept this email as a formal request for a modification to our mining reclamation plan. And as formal request to terminate our existing permit.

Due to the extensive damages incurred to the shaft opening, by repeated cases of theft and vandalism, we would like to reclaim and close the existing shaft. The shaft opening is currently surrounded by a concrete pad. Our original plan for reclamation was to tear down our building and break up all of the surrounding concrete pad. The remains of which we would back fill into the existing shaft opening. We would then install a PUFF plug.

Vandals broke into the building and shaft, removing the ½" Solid steel lid, and stole the 2" x 12" solid oak planks that made up our shaft opening side walls. They also stole \$10,000 in equipment and personal items. They broke in by tearing off a section of roofing material and then simply unbolted the door locks from the inside. I repaired the building, bolted the damaged doors shut and welded the metal lid onto the shaft opening for safety reasons.

The metal building was heavily damaged during a Haboob wind storm a couple of months later. The Building is non-repairable. The damages are too great.

I will be tearing down the remains of the metal building and cleaning up the scattered debris during the next few weeks.

The modification to our reclamation plan that I am seeking is as follows.

Remove the skeletal remains of our metal building.

Clean up the wind strewn debris field.

Cut the metal lid off of the shaft opening.

Shove all remaining debris, Railroad timbers, metal sheeting, ventilation pipe, and various trash, into the abandoned shaft.

Puff plug the shaft to spec.

Install a concrete cap at the shaft opening.

For safety reasons, we would like to leave the concrete pad and rebar in place. The vandalism has made the opening and surrounding area structurally weakened. Therefore we would like to leave the concrete pad to reinforce the safety of the surrounding area.

The remainder of our footprint will be removed.

The decision has been made to abandon the shaft on a permanent basis. As the cost of mineral

recovery from the shaft is nonviable.

Please feel free to contact me by phone and email as needed regarding the next steps.
Thank you for your time and support.

Respectfully
Michael Rutland
575.740.3469
michael@sawni.net

----- Original message -----

From: "Rynas, Samantha, EMNRD" <Samantha.Rynas@emnrd.nm.gov>

Date: 12/2/24 2:51 PM (GMT-07:00)

To: michael@sawni.net

Cc: "Durr, Corey W" <CDurr@blm.gov>, "Chavez, Leah N" <lnchavez@blm.gov>

Subject: RE: [EXTERNAL] Harding Mine SI025MN Modification request

Good Afternoon Mr. Rutland,

Thank you for letting us know about your plan to permanently close the shaft.

For a complete modification application, we will still need the 250\$ application fee. Once we get the fee we can start proceeding with the normal modification process.

In the meanwhile, under MMD's Permit, you are allowed to move ~~-partially-~~ forward with your reclamation plan. Please see comments/limitations for your plan below in red.

1. Remove the skeletal remains of our metal building. ✓
 2. Clean up the wind strewn debris field. ✓
 3. Cut the metal lid off of the shaft opening. ✓
 4. Shove all remaining debris, Railroad timbers, metal sheeting, ventilation pipe, and various trash, into the abandoned shaft. ✓
- PAUSE ACTIVITIES HERE. BLM has jurisdiction and must provide their decision on how to handle the cement pad. In the senario the cement must be removed, MMD suggests waiting to PUFF plug until the cement is broken up and added to the shaft prior to plugging, otherwise the cement will need to be removed from the site.**
5. Puff plug the shaft to spec.
 6. Install a concrete cap at the shaft opening.

For safety reasons, we would like to leave the concrete pad and rebar in place. The vandalism has made the opening and surrounding area structurally weakened. Therefore we would like to leave the concrete pad to reinforce the safety of the surrounding area. → **MMD has no objections to this; however, this is the BLM's decision, and we defer to them.**

Additionally, we would like to be onsite during some of the reclamation activities. Do you think you can/will be on site the week of the 9th or 16th of December? I am available both weeks except for the 12th the 17th and the 20th.

Samantha Rynas

Reclamation Specialist
Mining and Minerals Division
Mining Act Reclamation Program
1220 S. St. Francis Drive
Santa Fe, NM 87505
(505) 216-8945
Schedule: Mon – Fri 7:30am - 4pm

From: [Durr, Corey W](#)
To: [Michael Rutland](#); [Rynas, Samantha, EMNRD](#)
Cc: [Chavez, Leah N](#)
Subject: Re: [EXTERNAL] Harding Mine SI025MN Modification request
Date: Tuesday, December 10, 2024 2:15:42 PM
Attachments: [image001.png](#)
[image001.png](#)

BLM does not have any objections to keeping the existing concrete pad in place and puff plugging the shaft with a concrete cap. Any rebar left in the concrete pad must be cut off even with the concrete surface, so no rebar is protruding out of the concrete, so it doesn't create a safety hazard.

However, BLM does NOT authorize placing any mining debris, Railroad timbers, metal sheeting, ventilation pipe, and various trash, etc., into the abandoned shaft. This material must be completely removed from the site and disposed of in a proper manner, such as an authorized waste transfer site.

Corey Durr
Geologist
Bureau of Land Management
Las Cruces District Office
(575) 525-4345
cdurr@blm.gov

From: [Michael Rutland](#)
To: [Durr, Corey W](#); [Rynas, Samantha, EMNRD](#)
Cc: [Chavez, Leah N](#); [Rynas, Samantha, EMNRD](#)
Subject: Re: [EXTERNAL] Harding Mine SI025MN Modification request
Date: Tuesday, December 10, 2024 5:19:38 PM
Attachments: [image001.png](#)
[image001.png](#)

Corey,

Having spent the entire day here on site, I do not intend to back fill the shaft with waste. It will be much easier to just haul it off. And safer to do so as well.

Although, our permit and original approved reclamation bond does state that all of the debris was to be put into the shaft and then puff plug. .

My father had his own way of doing things. Safety was not his strong suit.

I do not work that way. Safety is everything. Which is why I feel that the concrete pad needs to remain in tact.

There is absolutely no rebar visible outside the concrete pad. Never was.

I have cleaned up the site today. I will return tomorrow with a smaller trailer and load all of the metal that i can safely remove by myself. The shaft is still welded shut. And I have rebuilt the ramp and road across the canyon so that driving up to the site is doable.

I intend to be on site again on Thursday

I will finish the removal of the remainder of the building when I have dependable help. Puff plugging will follow shortly there after.

Respectfully
Michael Rutland
575.740.3469
michael@sawni.net

From: [Michael Rutland](#)
To: [Rynas, Samantha, EMNRD](#); [Durr, Corey W](#)
Cc: [Chavez, Leah N](#); [Chisler, Clinton, EMNRD](#); [Ennis, David, EMNRD](#)
Subject: RE: [EXTERNAL] Harding Mine S1025MN Modification request
Date: Saturday, December 28, 2024 4:02:24 PM
Attachments: [image001.png](#)
[image001.png](#)
[image001.png](#)
[image001.png](#)

Ladies and Gentlemen

I am attaching pictures of my progress in closing of the Harding mine.

Cleanup

Building dismantling

Hauling all debris off of the mountain

Shaft was Puff Plugged with 8 cu.yd. of Foam

Shaft was then topped off with gravel, Steel plate, and concrete cap.

All screws and metal have been removed with a magnetic.

Large rocks have been placed as a barrier to keep the overly curious from driving onto the slab.

I can be available for an inspection after the 6th.

Once my reclamation has been approved, I assume that our Bond will be returned in a timely manner.

I am working on details as to what my plans will be for the future. And I am giving notice as to the possibility that our mining permit will be modified or relinquished all together. That is a discussion for another time. I simply need to be done with the shaft, at this point.

Respectfully
Michael Rutland
575.740.3469
michael@sawni.net

Attachments:







From: [Michael Rutland](#)
To: [Rynas, Samantha, EMNRD](#); [Durr, Corey W](#)
Cc: [Chavez, Leah N](#); [Chisler, Clinton, EMNRD](#); [Ennis, David, EMNRD](#)
Subject: RE: [EXTERNAL] Harding Mine SI025MN Modification request
Date: Friday, January 3, 2025 11:02:45 AM
Attachments: [image001.png](#)
[image001.png](#)
[image001.png](#)
[image001.png](#)

The decision has been made to relinquish the mining permit with NMMD. I can no longer justify the expenses and time required to make a commercial mine viable.

My father having Passed Away in June, and the remnants of the project as a whole, are the deciding factors. I have been the sole source of all funds and manpower for more than 10 years. And the only person that has been "involved" in maintaining and reclamation. Sawni Enterprises LLC is still an actual entity, but I am the sole remaining owner due to the lack of performance and involvement.

I do still intend to work the claims in an attempt to make the more than 40 years of time spent on the mountain worth while.

I intend to shift my efforts to a much smaller scale. Being more recreational than commercial. If our permit can be changed to just my name, then great. Lets scale it down to reflect the small scale aspect. If it is required that it stay in the Name of Sawni, then I feel that we need to relinquish it. I would like to close the books on Sawni Enterprises LLC. Making my taxes much easier to deal with each year.

Please advise me as your suggestions in this matter.

Thank you.

Respectfully
Michael Rutland
575.740.3469
michael@sawni.net