

Figures



STATE OF NEW MEXICO

NOT TO SCALE



P:\111073 Freepport Chino\CCP\Updated Figures with Telesto Naming Convention\WMD Bound\Approved_TLSTO_Names Pre Rec_8.5.24_SMA.dwg SAVER: 8/9/24 PRINTED: 8/9/24



Project No. 111073

- APPROXIMATE END OF YEAR 2030 FACILITY BOUNDARY
- CHINO MINE PERMIT BOUNDARY
- AREAS TO BE USED IN EVAPORATIVE TREATMENT SYSTEM (DRIP SYSTEM)
- AREAS TO BE USED IN SLUDGE DISPOSAL AND STORAGE

— 16" PIPELINE TO SMA

May 2024

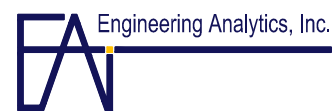
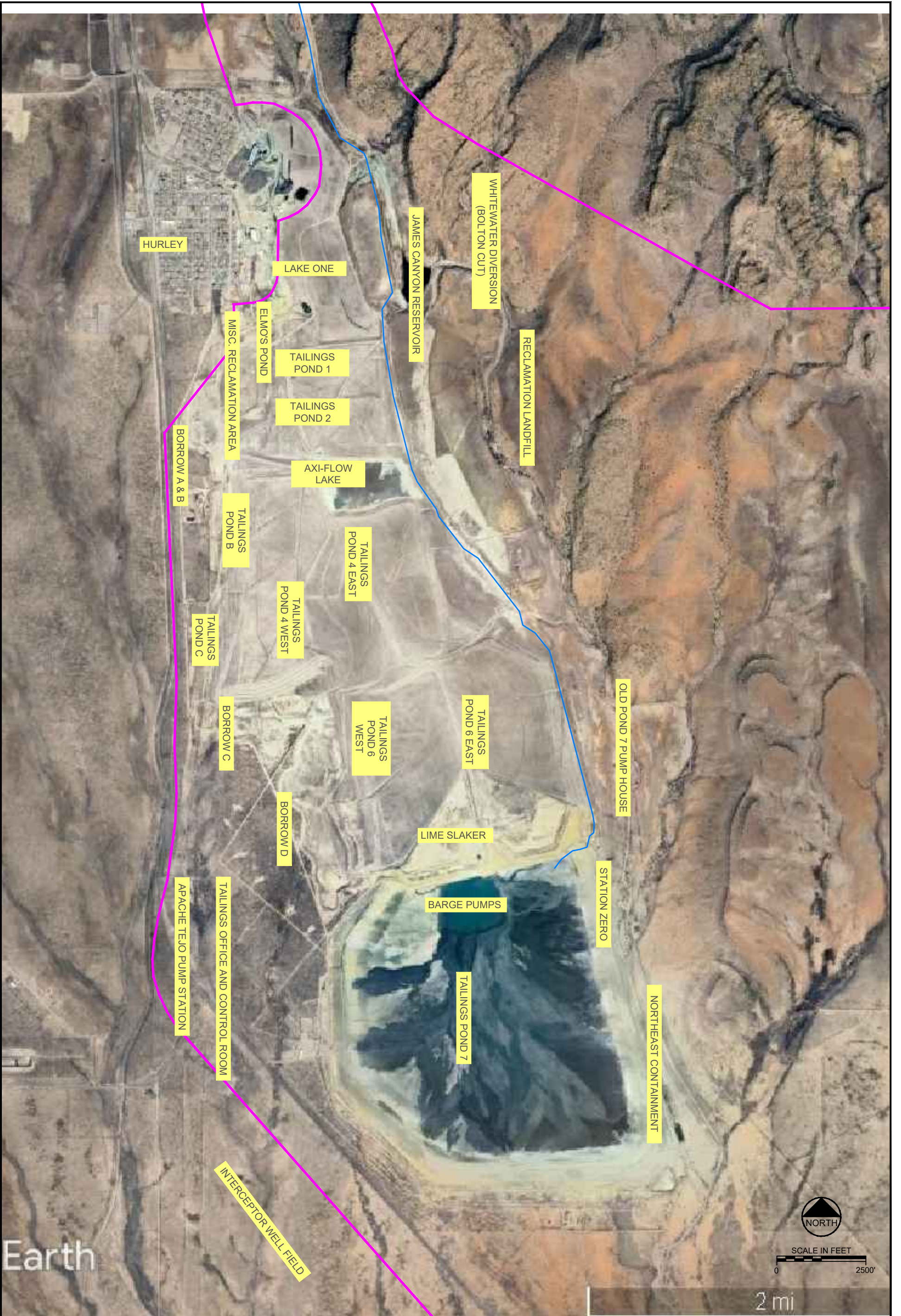


FIGURE 2
NORTH MINE AREA LOCATION MAP WITH EVAPORATION AREAS
CHINO MINE - CLOSURE/CLOSEOUT PLAN

P:\111073_Freepport_Chino_CCP\Updated_Figures_with_Telesto_Naming_Convention\MMD_Bound_Approved_TLSTO_Names_Pre_Rec_8.5.24_SMA.dwg - SAVED: 8/9/24 - PRINTED: 8/9/24



Project No. 111073

- CHINO MINE PERMIT BOUNDARY
- 16" PIPELINE FROM NMA

May 2024

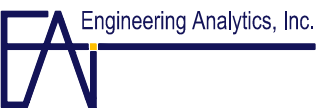
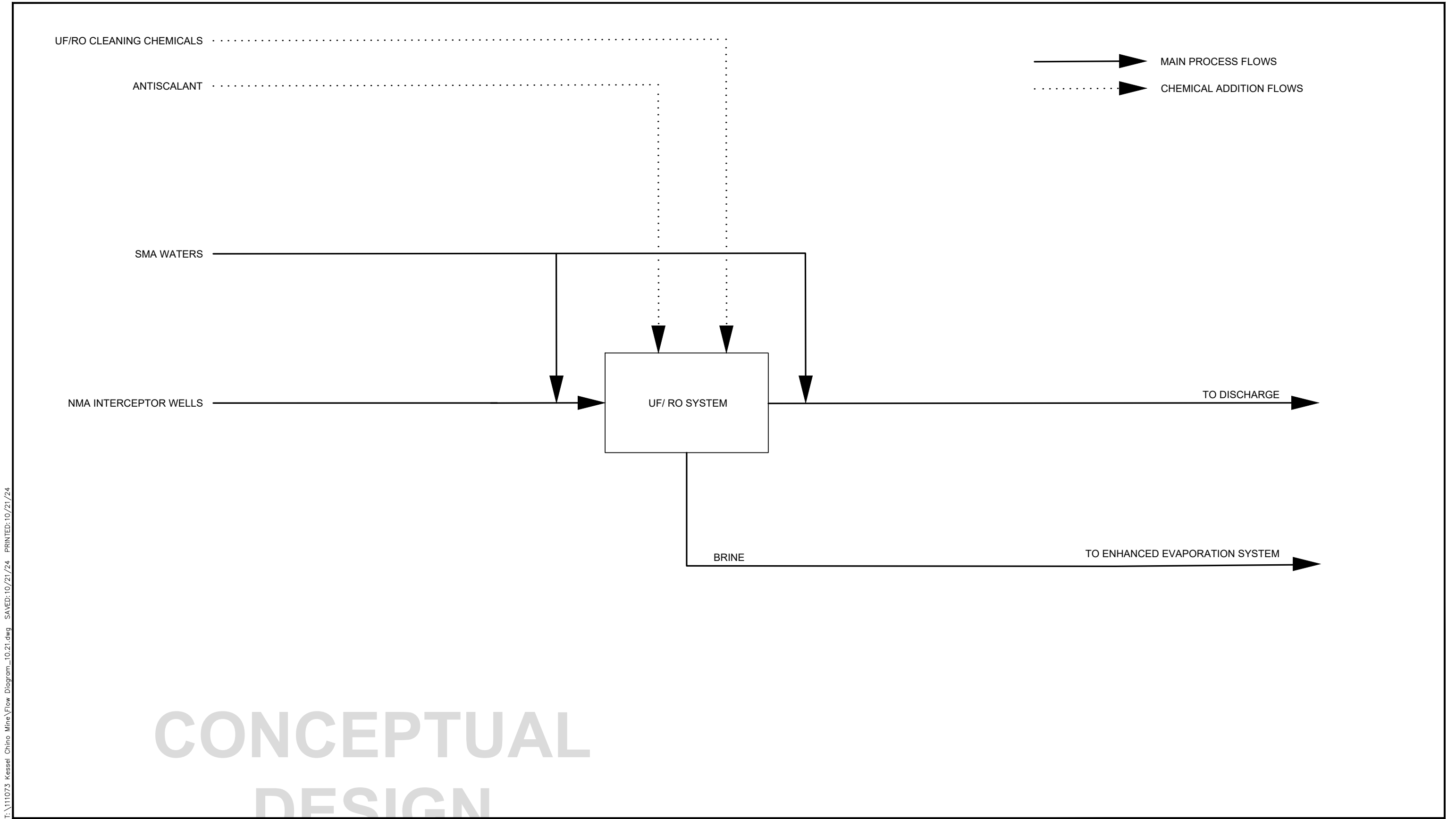


FIGURE 3
SOUTH MINE AREA TAILINGS POND 7
CHINO MINE - CLOSURE/CLOSEOUT PLAN



I:\111073 Kessel Chino Mine\Flow Diagram_10.21.dwg - SAVED:10/21/24 - PRINTED:10/21/24