



## Carthage Safeguarding Project

The Abandoned Mine Land (AML) Program is proposing to safeguard four (4) previously safeguarded features located in the vicinity of Fite Ranch, 9 miles east of San Antonio, New Mexico. One (1) feature is located on BLM surface ownership and three (3) are located on private property. These features were previously safeguarded during a 1993 Carthage Mine Safeguard Project but have since re-opened posing a threat to public safety. The Carthage area has a brief history of coal mining dating back from the mid-late 19<sup>th</sup> Century and this mining legacy has occasionally left hazards such as unprotected adit openings and subsidence from mine workings. The mission of the AML is to address public health and safety risks posed by abandoned mines throughout New Mexico and this flyer provides an update on current efforts within the Carthage area.

**We Would Like to Hear from You!** Please review the following information and provide comments by **April 15, 2022**. Please see the attached map located on the opposite page for detailed location information.

### Carthage Area Mine Safeguarding and Mitigation Efforts:

#### BLM Surface Features

- Feature R10: Installation of a rock bulkhead and bat compatible gate.

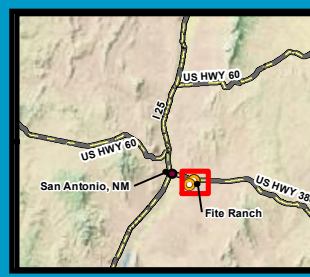
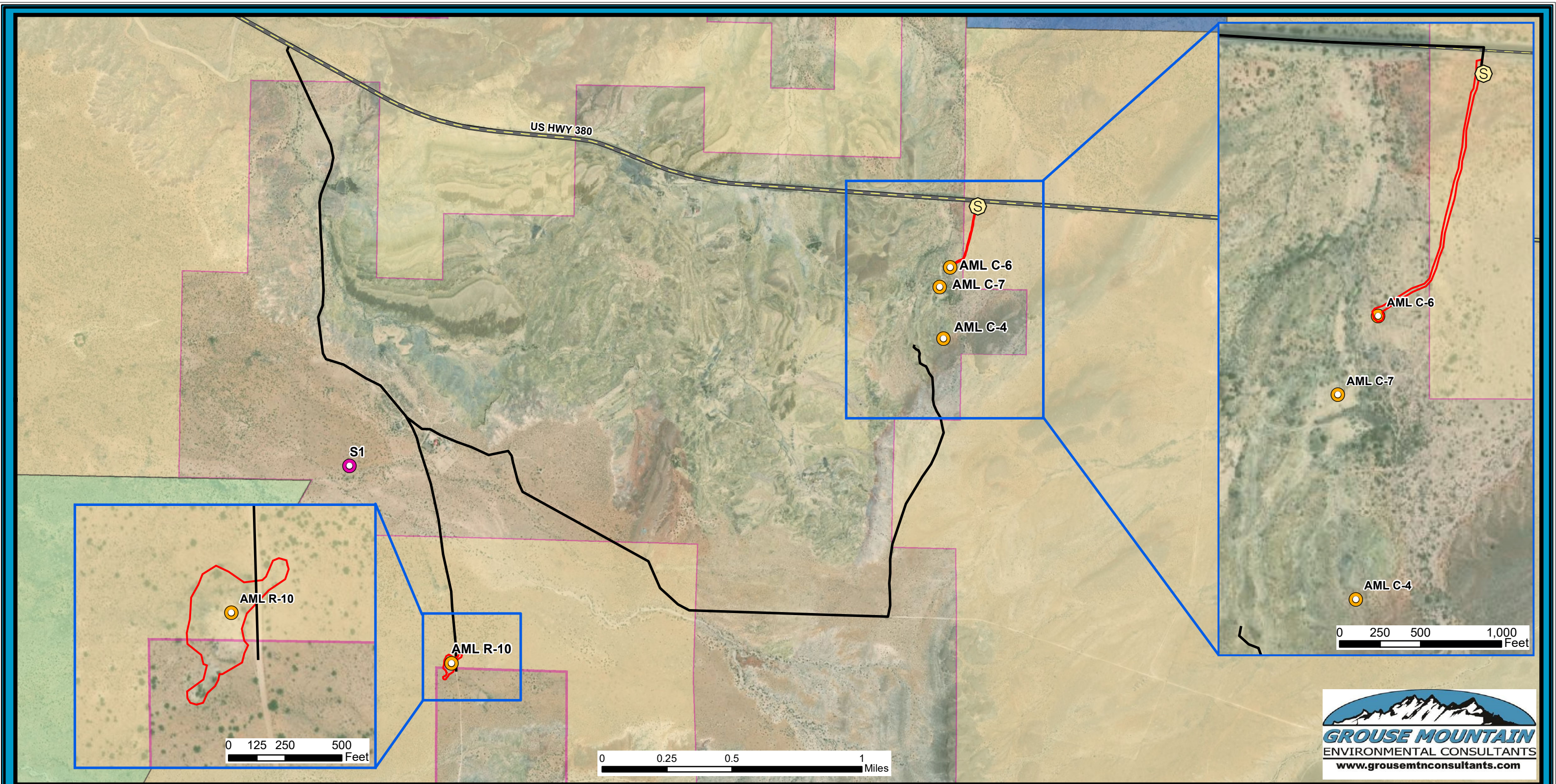
#### Private Surface Ownership Features

- Feature C-4: Removing existing timber cover and replace with a new foundation and steel gate.
- Feature C-6: Excavate and backfill feature with nearby soil material.
- Feature C-7: Cut one bar in existing gate and replace with a removable bar.

**Schedule:** Safeguard methods will be completed in Fall/Winter 2022.

**Questions and Comments:** Please contact James Hollen (NEPA Coordinator) at the contact info below by **April 15, 2022**.

James Hollen  
New Mexico Abandoned Mine Land Program  
Energy, Minerals and Natural Resources Department  
1220 South St. Francis Drive, Santa Fe, NM 87505  
James.Hollen@state.nm.us  
505-231-8332



**Carthage Subsidence Maintenance Project Categorical Exclusion, Socorro County, New Mexico**

- |                                 |                 |                                 |  |
|---------------------------------|-----------------|---------------------------------|--|
| Area of Potential Effect (APE)  | Staging Area    | <b>Surface Ownership</b>        | U.S. Fish and Wildlife Service (USFWS) |
| Mine Feature - To be Closed     | Existing Access | Private                         | State                                  |
| Mine Feature - Not to be Closed | Highway         | Bureau of Land Management (BLM) |  |

Coordinate System: UTM Meters  
 Projection: NAD 83 Zone 13N  
 Scale: 1:23,000  
 Date: 8/12/2020  
 Created by: Imurray  
 File Name:  
 AML012\_BioMemo\_CX\_061720

