

TO:

David ("D.J.") Ennis, Program Manager
Mining and Minerals Division
1220 S. St. Francis Drive
Santa Fe, NM 87505
(505) 372-8634 Cell and Office
david.ennis@emnrd.nm.gov

And

Leighandra Keevan
BLM
Rio Puerco Field Office
100 Sun Ave. NE
Unit 330
Albuquerque, NM 87109
(505) 761 8771 1Keevan@blm.gov

FROM:

Rod Blackford
Eagle Mesa Mine Manager
(575) 915 8368 (rgblackford0901@outlook.com)

Dear Mr. David Ennis and MS Leighandra Keevan,

I am sending you three maps in a power point presentation to clarify our latest modifications to mine.

We have recently reclaimed 2.12 acres and would like a partial return of reclamation funds or increase of acreage. In addition, there are .8 acres of the original disturbed acreage we thought to disturb but recent new discoveries of humate does not make this necessary. Therefore, from the 18.03 original disturbed acres, we will not disturb .8 acres leaving 17.23 disturbed acres. We recently reclaimed 2.12 acres which leaves just 15.11 disturbed acres.

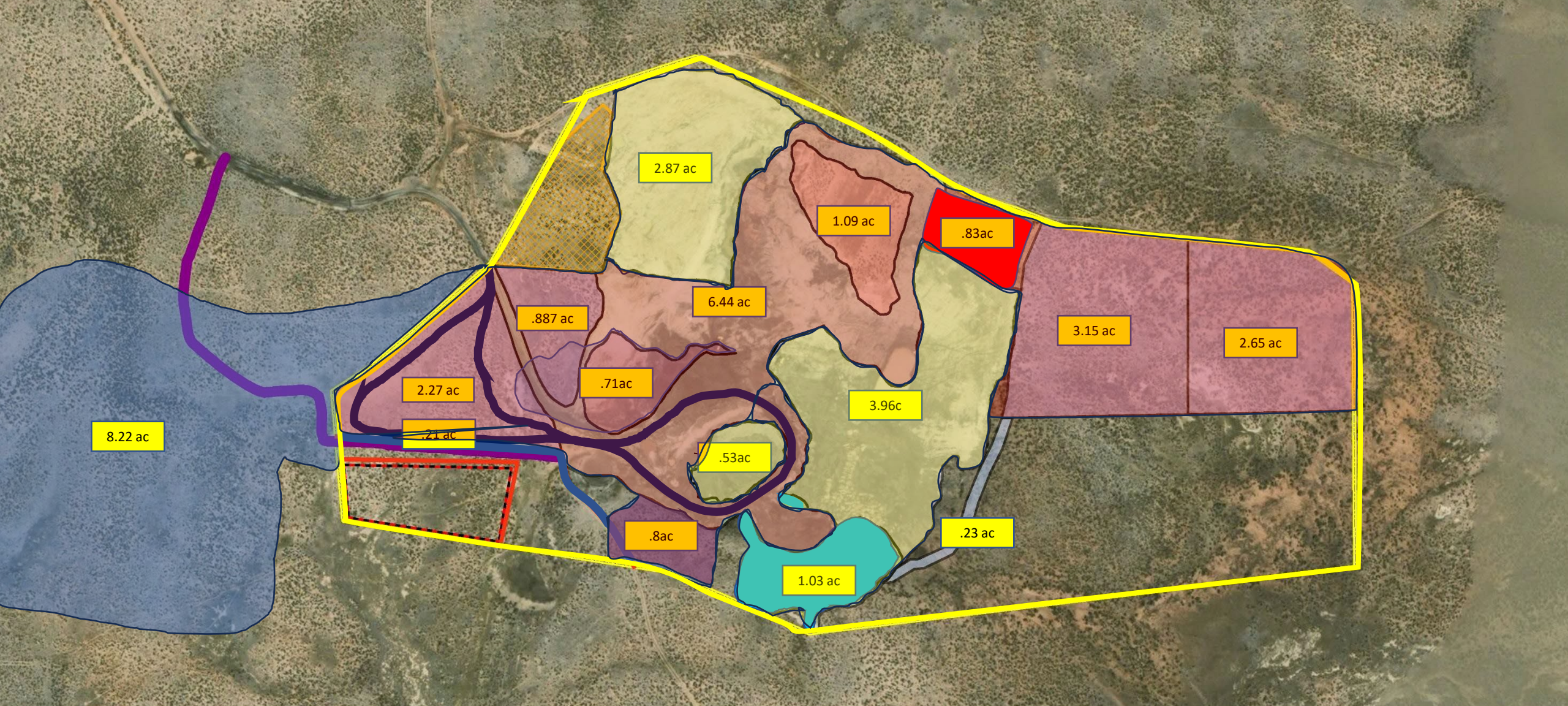
We recently fenced in 14.4 acres to the adjacent western boundary which lies within RAMMSCO's 535 acres. We would like to expand into this area to no more than 6.6 acres currently or until we post additional funds into the assurance reclamation bond and/or reclaim additional acreage.

You are invited to the mine anytime at your convenience.

Sincerely,

Rod Blackford

David Williams



8.22 ac

2.87 ac

1.09 ac

.83ac

6.44 ac

.887 ac

3.15 ac

2.65 ac

2.27 ac

.71ac

3.96c

.21 ac

.53ac

.8ac

.23 ac

1.03 ac



Project Location

-  Existing Fenceline
-  Cultural Protection Area (generalized; no disturbance allowed)
-  Vegetation Reference Area (1.00 acre)
-  New Fence Only Around Vegetation Monitoring Site
-  Proposed Ranch Road Not Made Yet
-  Fence Not Needed
-  Active Mining Area 1.8 ac
-  Earthmoving Complete 8.39 ac
-  Staging, Storage and Access 6.44 ac
-  Disturbed area Mining and Access
-  Additional Disturbed area for Mining .83 ac
-  New Earthwork Complete 1.03 ac



EAGLE MESA MINE

Mine Plan

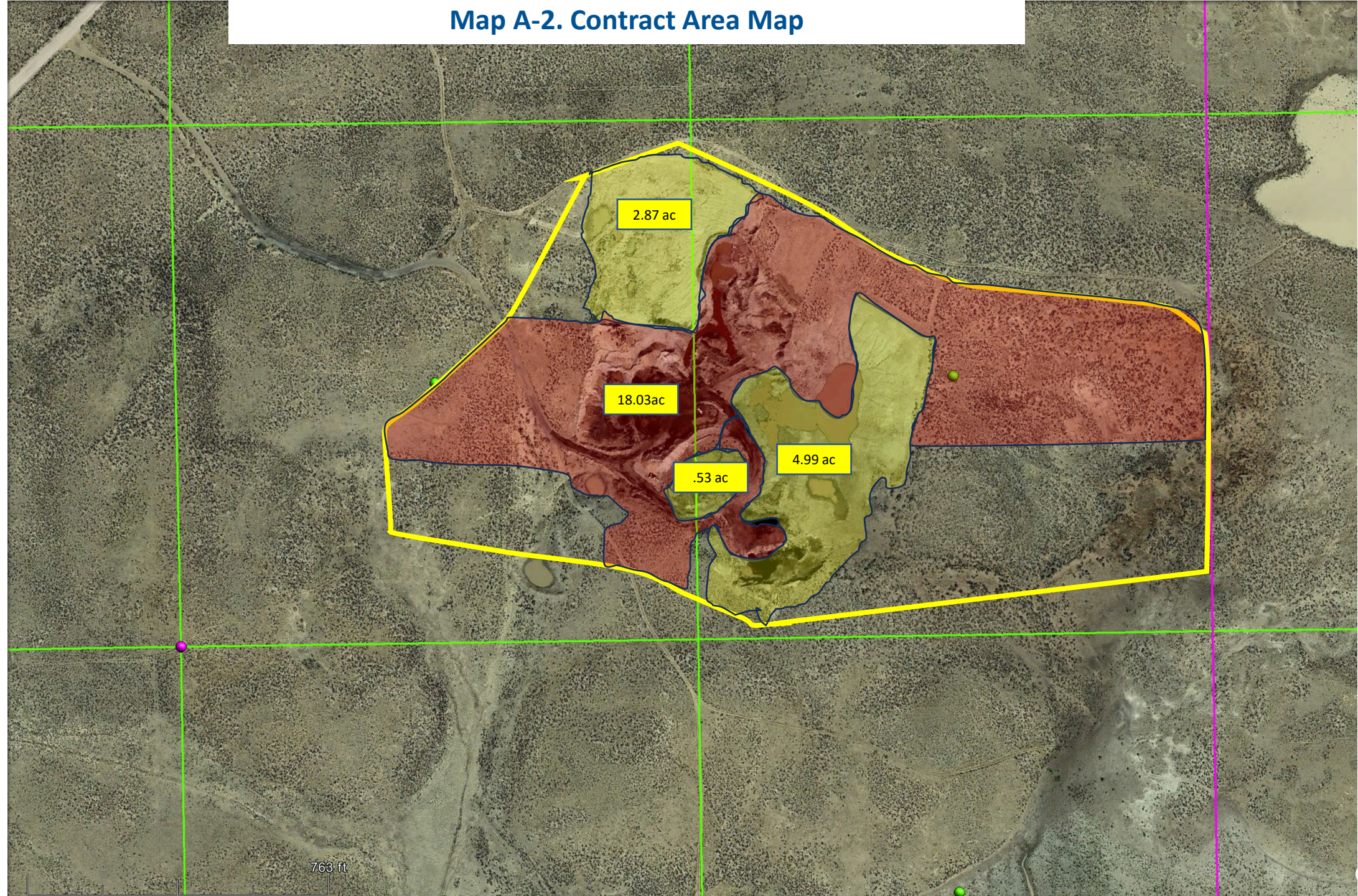
Sandoval County, NM

Township 19 North, Range 4 West

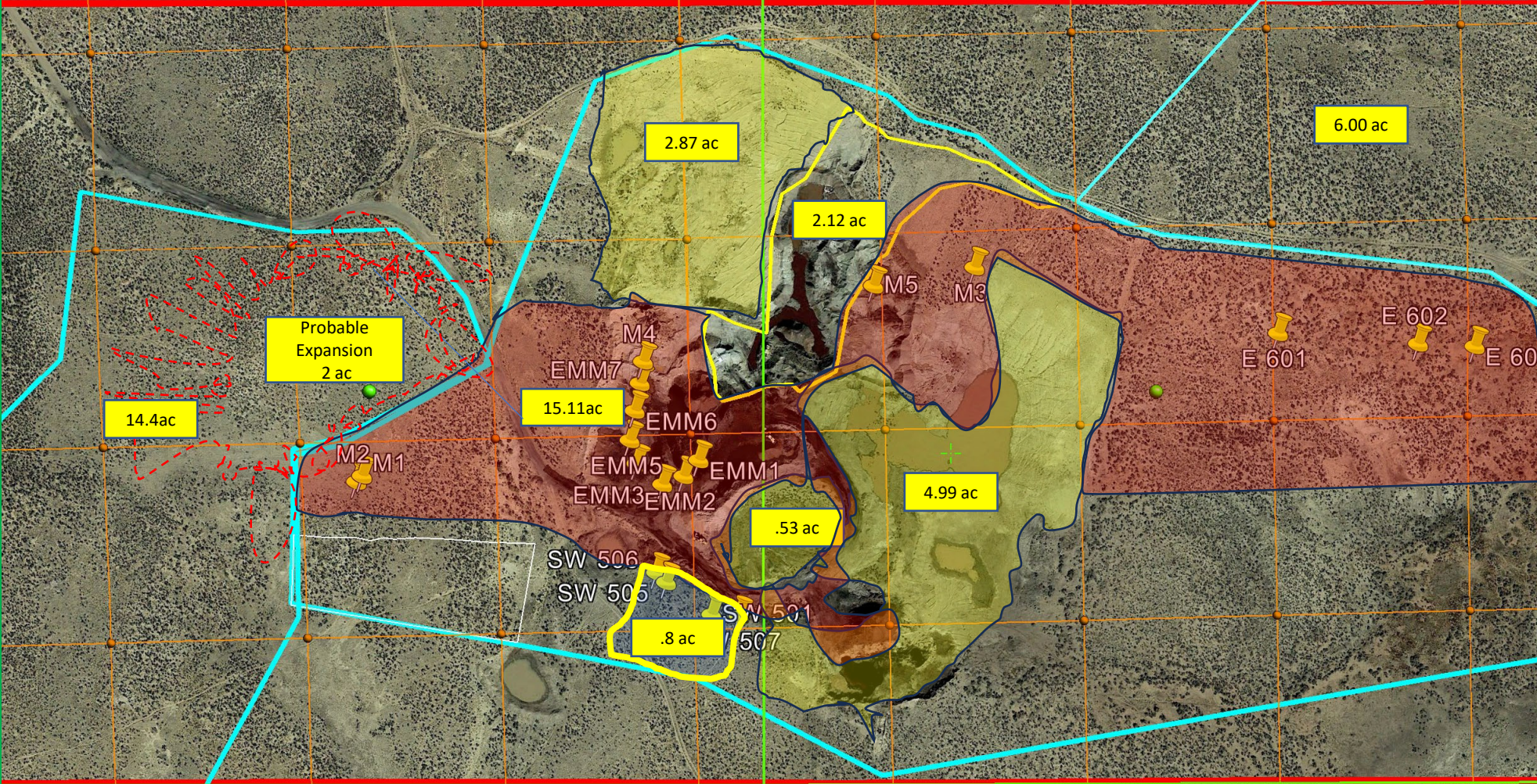
Map A-2. Contract Area Map

Disturbed
18.03 Acres

Reclaimed
8.39 acres



763 ft



Disturbed Area 18.03 minus .80 ac that will not disturb minus 2.12 Newly Reclaimed area leaving 15.11 net disturbed Acreage

reclaimed acres
 $2.87 + 4.99 + .53 + 2.12 = 10.51$ total reclaimed acres