

PLAN VIEW - FOOTER DETAILS

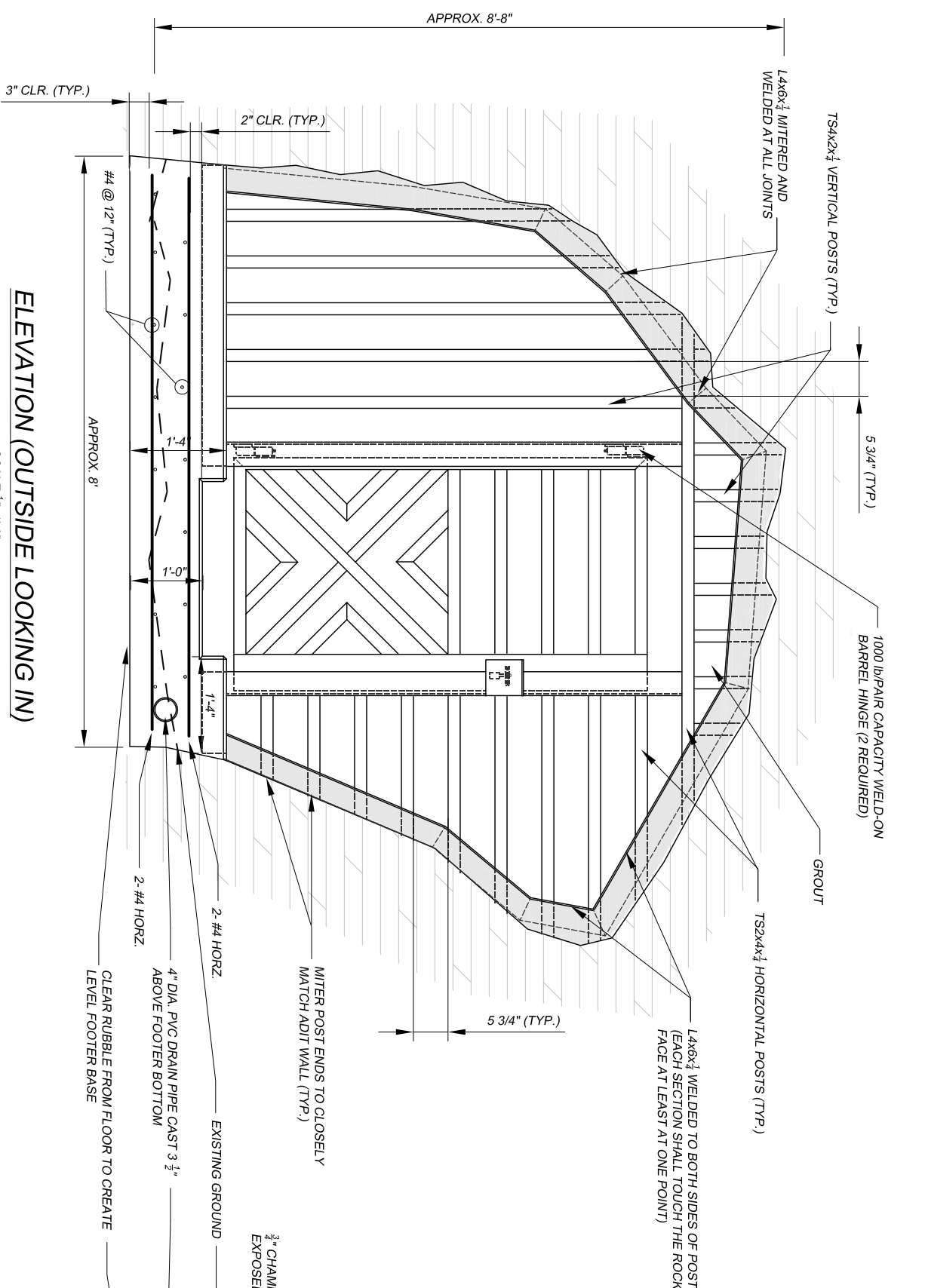
SCALE: $\frac{1}{2}''=1'-0''$

NOTE:
SEE FIGURES 8, 9 AND 10 FOR DOOR AND LOCK BOX DETAILS.

CAUTION - THIS PROJECT REQUIRES CONSTRUCTION WORK IN, AROUND, AND OVER HAZARDOUS AND UNPROTECTED MINE SHAFTS, STOPS, ADITS, HIGHWALLS, AND OTHER FEATURES WHICH MAY BE UNSTABLE. THE CONTRACTOR SHALL BE RESPONSIBLE FOR THOROUGHLY INVESTIGATING THE SITE CONDITIONS AND SCHEDULING EQUIPMENT, EQUIPMENT OPERATORS, OPERATIONS, PERSONNEL AND SAFETY PROCEDURES TO PREVENT ACCIDENTS AND INJURIES.

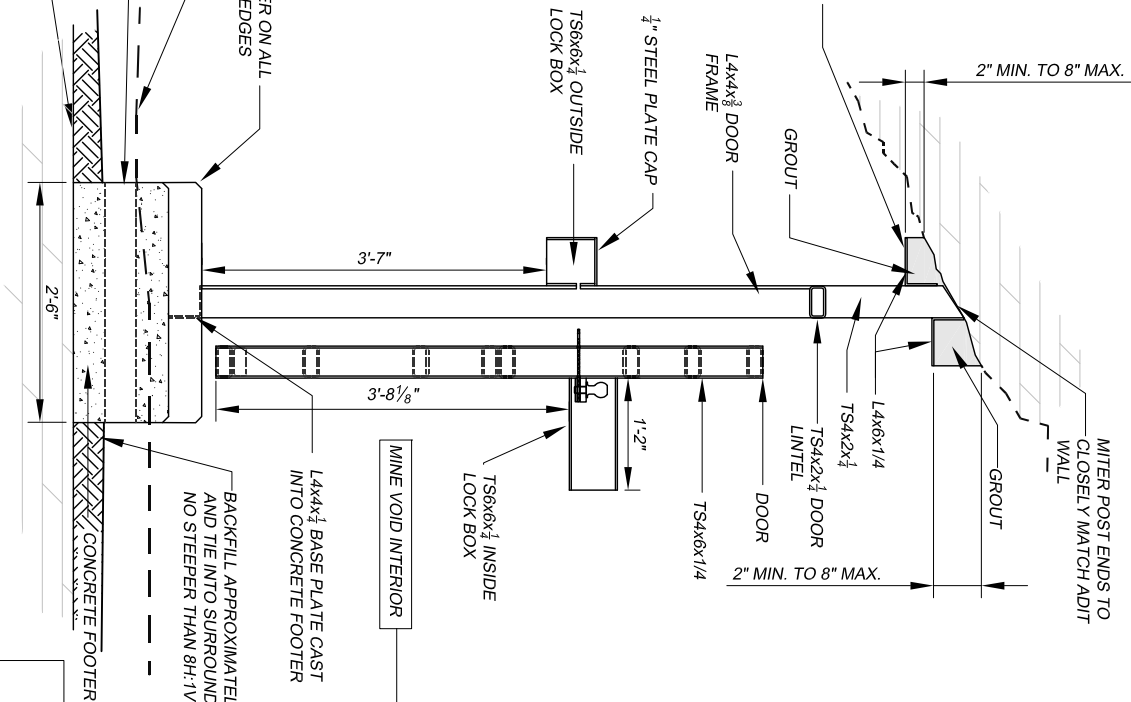
GENERAL NOTES:

1. THIS DRAWING SHOWS THE GENERAL SHAPE AND APPROXIMATE PROFILE OF THE ADIT AT THE INTENDED LOCATION OF THE CLOSURE. USE THE DRAWING AS A GUIDE FOR FIELD LAYOUT OF THE CLOSURE. FIELD VERIFY DIMENSIONS PRIOR TO CONSTRUCTION.
2. TUBULAR STEEL, STEEL PLATES, AND SHAPES SHALL BE WEATHERING STEEL AS SPECIFIED. WELD ALL JOINTS. JOINTS SHALL BE TIGHT SO THAT MOISTURE CANNOT ENTER BETWEEN PLIES OF MATERIAL. ROUND OR CHAMFER ALL SHARP EDGES AND CORNERS.
3. PRIOR TO CONSTRUCTING THE FOOTER, REMOVE RUBBLE AND LEVEL THE FLOOR IN THE AREA OF THE CLOSURE AS DIRECTED BY THE AML PROJECT MANAGER. THE FLOOR OF THE ADIT SHALL BE LEVEL FOR A DISTANCE OF AT LEAST 3' TO EITHER SIDE OF THE ADIT FOOTER AND SHALL BE IN SMOOTHLY WITH THE SURROUNDING EXISTING FLOOR WITH NO SLOPE STEEPER THAN 3H:1V. THE FOOTER BASE SHALL BE WELL COMPACTED TO THE SATISFACTION OF THE AML PROJECT ENGINEER PRIOR TO POURING CEMENT. EXCAVATED MATERIAL MAY TYPICALLY BE DISPOSED OF WITHIN APPROXIMATELY 150' OF THE ADIT ENTRANCE AS DIRECTED BY THE AML PROJECT MANAGER.
4. INSTALL HEAVY DUTY BARREL WELD-ON PIVOT HINGES AS SHOWN AND AS SPECIFIED. BOTH HINGES SHALL BE INSTALLED TO SUPPORT THE DOOR AND SHALL BE IN-LINE AND OPERATE SMOOTHLY WHEN THE DOOR IS HUNG.
5. THE DOOR AND DOOR FRAME SHALL BE CONSTRUCTED AND INSTALLED TRUE, SQUARE AND PLUMB. THE DOOR SHALL CLOSE SNUGLY AGAINST THE FRONT FACE OF THE DOOR FRAME WITH NO MORE THAN A $\frac{3}{8}''$ GAP AT ANY POINT ALONG THE FRONT FACE OF BOTH SIDES OF THE DOOR AND FRAME WHEN THE DOOR IS CLOSED.
6. GROUT SHALL BE CONSTRUCTION GRADE.
7. PLACE A $\frac{3}{4}''$ CHAMFER ON ALL EXPOSED EDGES OF CONCRETE FOOTER.
8. TOLERANCES ON THE CENTER-TO-CENTER DIMENSIONS BETWEEN POSTS SHALL BE $\pm 1/8''$.
9. PLACE A SURVEY MARKER, PROVIDED BY THE PROJECT MANAGER, INTO THE FOOTER.



ELEVATION (OUTSIDE LOOKING IN)

SCALE: $\frac{1}{2}''=1'-0''$



SECTION - DOOR SLIGHTLY OPEN

SCALE: $\frac{1}{2}''=1'-0''$

ABANDONED MINE LAND PROGRAM
MINING AND MINERALS DIVISION
ENERGY, MINERALS AND NATURAL RESOURCES DEPARTMENT

SCALE: AS SHOWN
DATE: SEPT. 29, 2010

DRAWN BY: JTG
REVISED:

FEATURE 2 ADIT

Harding Pegmatite Mine Safeguard Project

DRAWING NUMBER
FIGURE 12