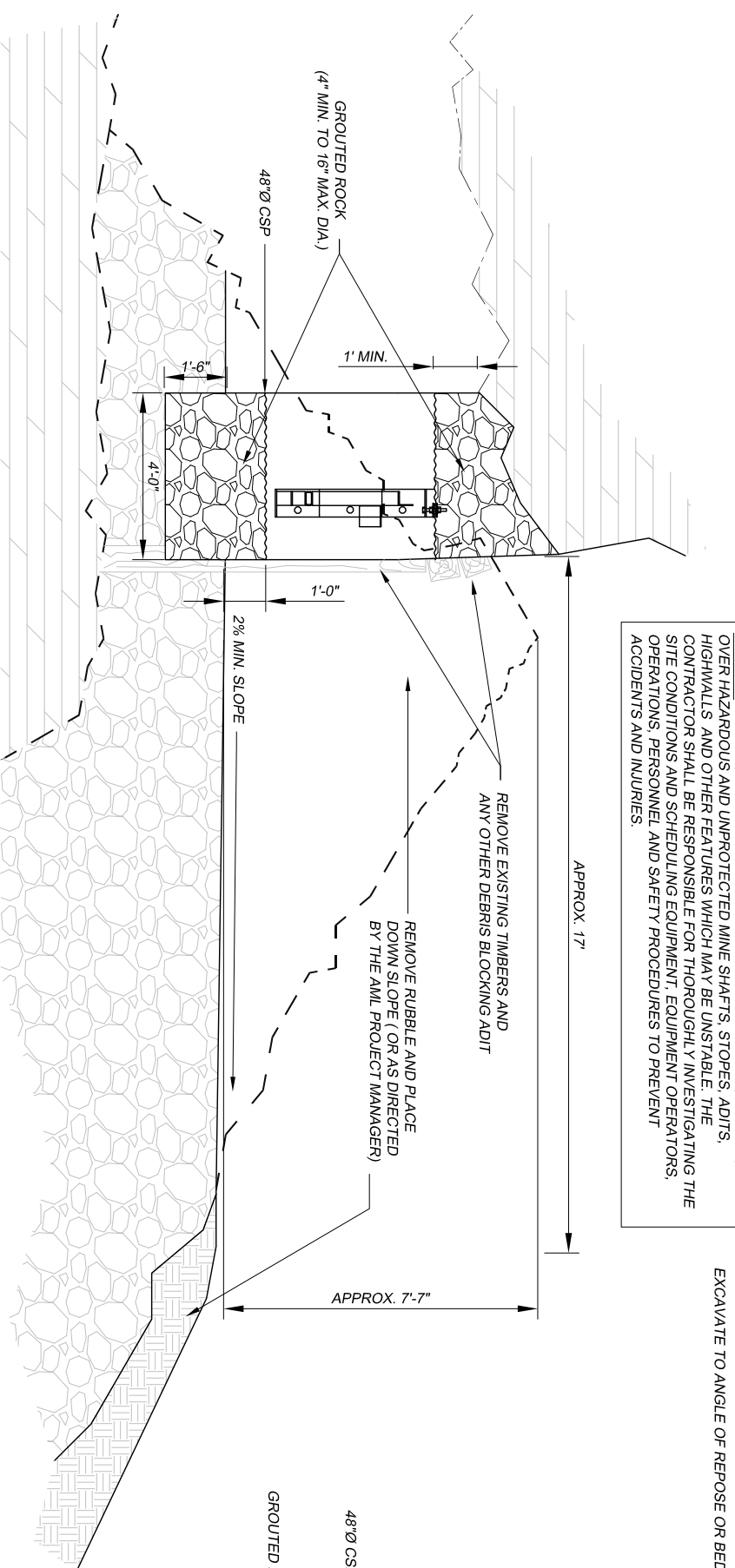
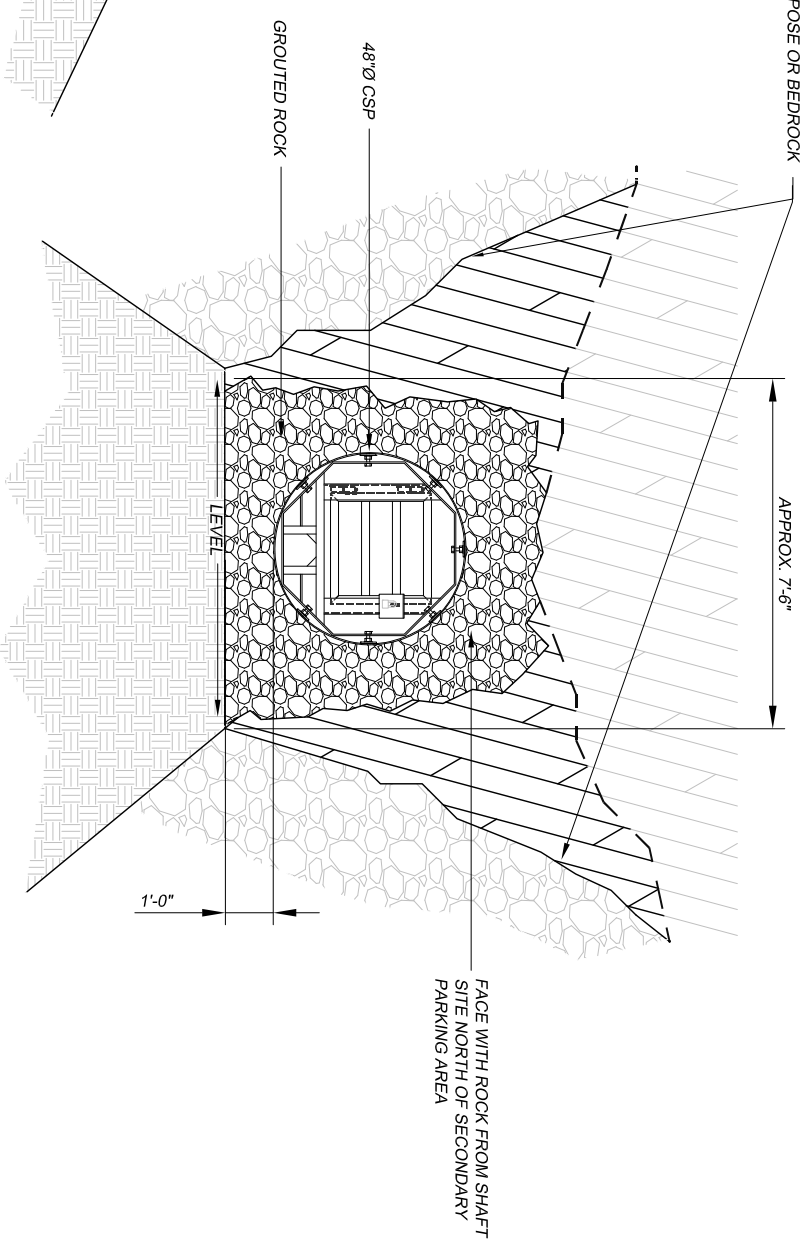


CAUTION - THIS PROJECT REQUIRES CONSTRUCTION WORK IN, AROUND, AND OVER HAZARDOUS AND UNPROTECTED MINE SHAFTS, STOPS, ADITS, HIGHMILLS, AND OTHER FEATURES WHICH MAY BE UNSTABLE. THE CONTRACTOR SHALL BE RESPONSIBLE FOR THOROUGHLY INVESTIGATING THE SITE CONDITIONS AND SCHEDULING EQUIPMENT, EQUIPMENT OPERATORS, OPERATIONS, PERSONNEL AND SAFETY PROCEDURES TO PREVENT ACCIDENTS AND INJURIES.



PROFILE VIEW - SECTION

SCALE: $\frac{1}{4}$ "=1'-0"

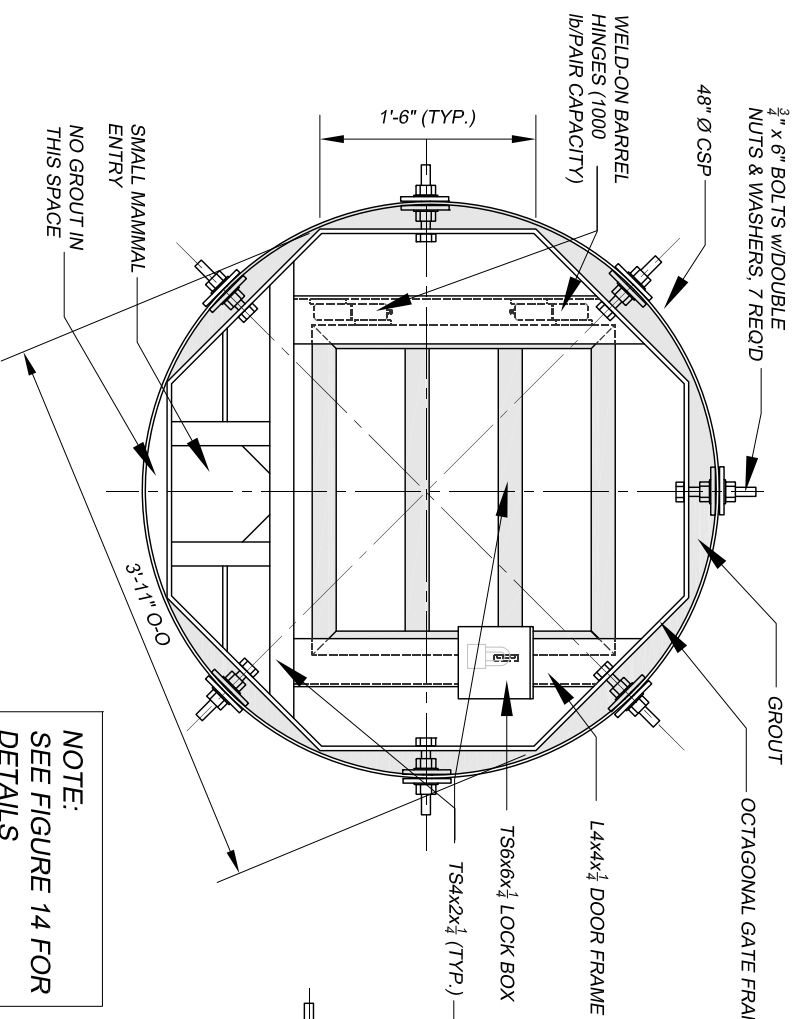


FRONT ELEVATION

SCALE: $\frac{1}{4}$ "=1'-0"

GENERAL NOTES:

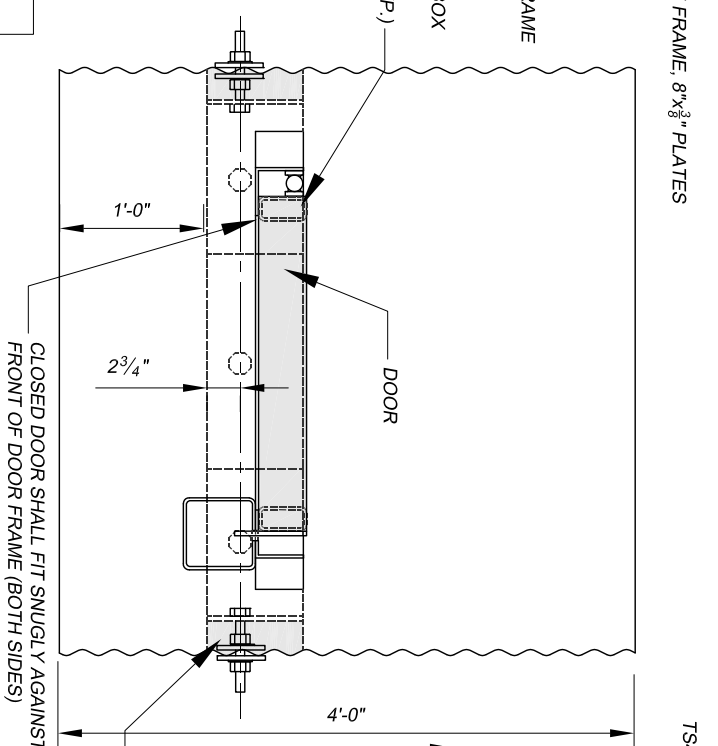
1. THIS DRAWING SHOWS THE GENERAL SHAPE AND APPROXIMATE PROFILE OF THE ADIT AT THE INTENDED LOCATION OF THE CLOSURE. USE THE DRAWING AS A GUIDE FOR FIELD LAYOUT OF THE CLOSURE. FIELD VERIFY DIMENSIONS PRIOR TO CONSTRUCTION.
2. TUBULAR STEEL, STEEL PLATES, AND SHAPES SHALL BE WEATHERING STEEL AS SPECIFIED. WELD ALL JOINTS. JOINTS SHALL BE TIGHT SO THAT MOISTURE CANNOT ENTER BETWEEN PILES OF MATERIAL. ROUND OR CHAMFER ALL SHARP EDGES AND CORNERS.
3. INSTALL HEAVY DUTY BARREL WELD-ON PIVOT HINGES AS SHOWN AND AS SPECIFIED. BOTH HINGES SHALL BE INSTALLED TO SUPPORT THE DOOR AND SHALL BE IN-LINE AND OPERATE SMOOTHLY WHEN THE DOOR IS HUNG.
4. THE DOOR AND DOOR FRAME SHALL BE INSTALLED TRUE, SQUARE AND PLUMB. THE DOOR SHALL CLOSE SNIUGLY AGAINST THE FRONT FACE OF THE DOOR FRAME WITH NO MORE THAN A $\frac{3}{8}$ " GAP ALONG THE FRONT FACE OF BOTH SIDES OF THE DOOR AND FRAME WHEN THE DOOR IS CLOSED.
5. WHEN CLOSING THE DOOR, THE LOCK PLATE SHALL ENTER THE SLOT IN THE FRAME AND LOCK BOX WITHOUT HITTING OR RUBBING THE EDGES OF THE SLOT.
6. GROUT SHALL BE CONSTRUCTION GRADE.
7. ROCK USED IN BULKHEAD CONSTRUCTION SHALL BE DURABLE (NO SHALE OR SANDSTONE) AND COME FROM A SHAFT SITE LOCATED ABOUT 50 YARDS NORTH OF THE SECONDARY PARKING AREA, UNLESS OTHERWISE APPROVED BY THE PROJECT ENGINEER.
8. PLACE A SURVEY MARKER, PROVIDED BY THE PROJECT MANAGER, INTO THE GROUTED ANNULAR.



ELEVATION

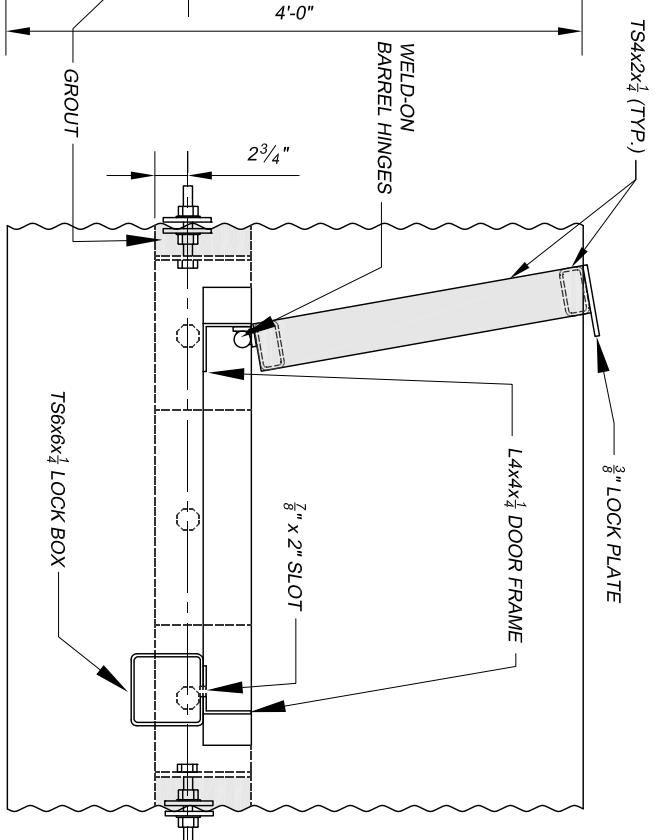
SCALE: $\frac{3}{4}$ "=1'-0"

NOTE:
SEE FIGURE 14 FOR
DETAILS



PLAN VIEW - DOOR CLOSED

SCALE: $\frac{3}{4}$ "=1'-0"



PLAN VIEW - DOOR OPEN

SCALE: $\frac{3}{4}$ "=1'-0"

ABANDONED MINE LAND PROGRAM MINING AND MINERALS DIVISION ENERGY, MINERALS AND NATURAL RESOURCES DEPARTMENT	
SCALE: AS SHOWN	DRAWN BY: JTG
DATE: AUG. 24.2010	REVISED:
FEATURE 3 ADIT	
Harding Pegmatite Mine Safeguard Project	DRAWING NUMBER FIGURE 13