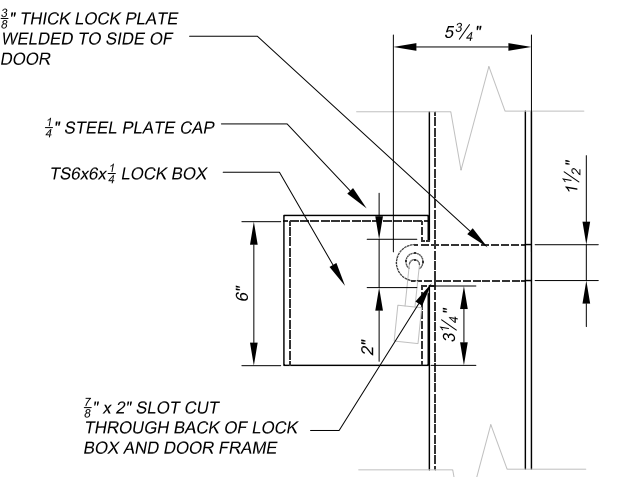
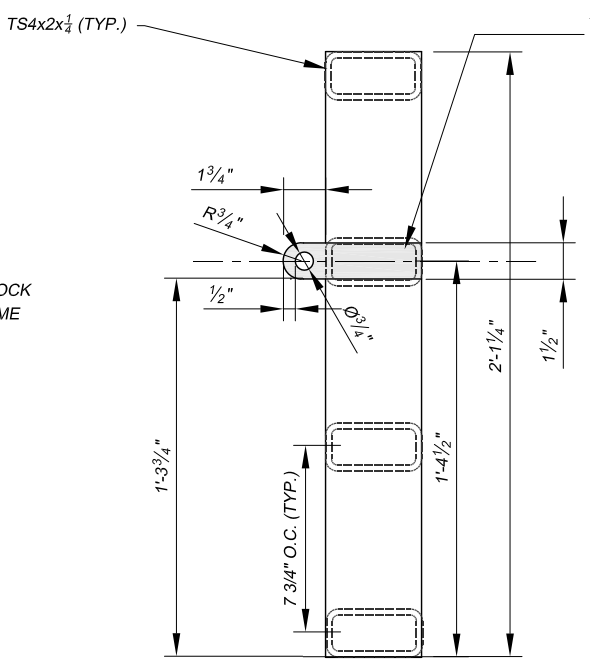
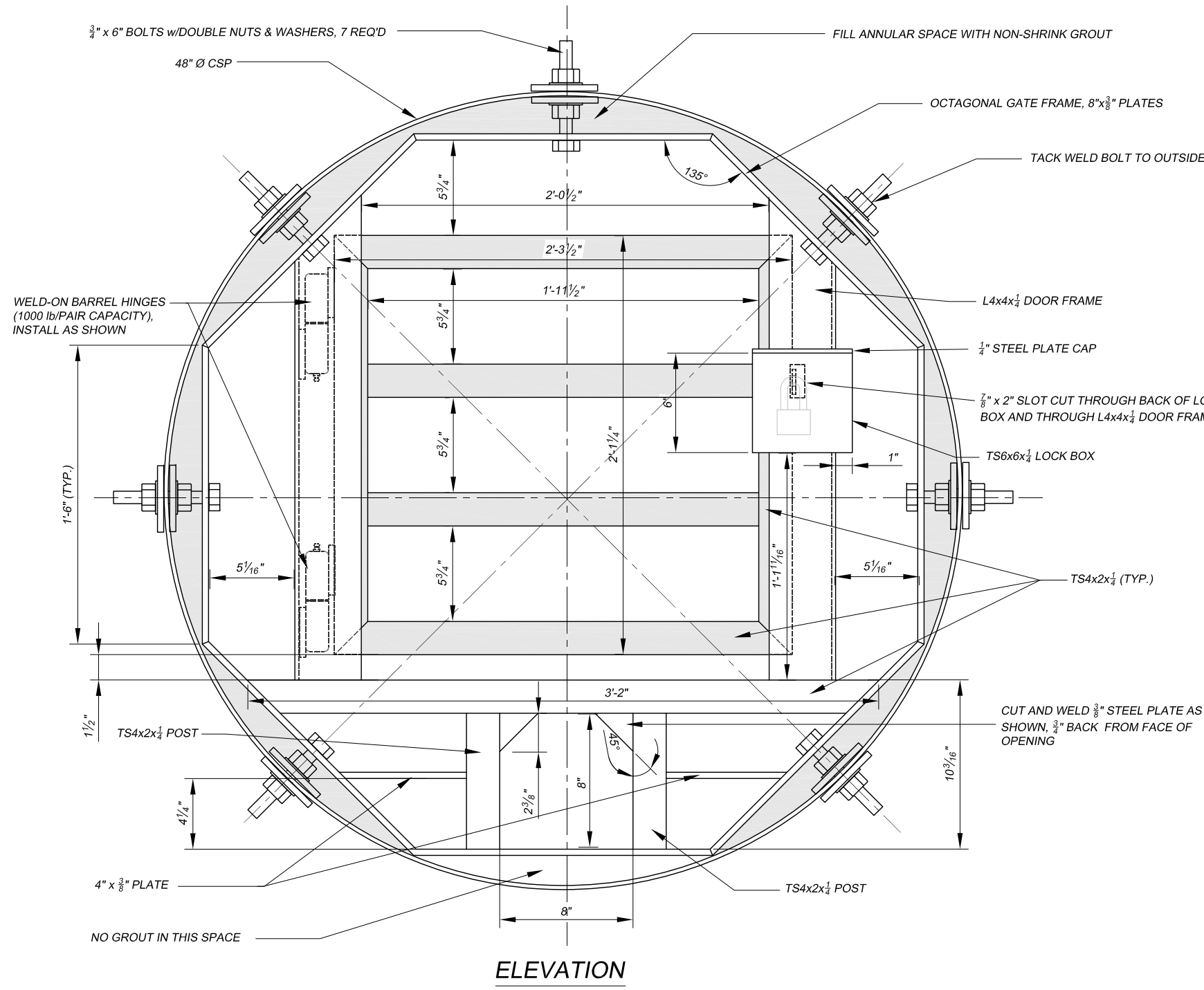


CAUTION - THIS PROJECT REQUIRES CONSTRUCTION WORK IN, AROUND, AND OVER HAZARDOUS AND UNPROTECTED MINE SHAFTS, STOPES, ADITS, HIGHWALLS AND OTHER FEATURES WHICH MAY BE UNSTABLE. THE CONTRACTOR SHALL BE RESPONSIBLE FOR THOROUGHLY INVESTIGATING THE SITE CONDITIONS AND SCHEDULING EQUIPMENT, EQUIPMENT OPERATORS, OPERATIONS, PERSONNEL AND SAFETY PROCEDURES TO PREVENT ACCIDENTS AND INJURIES.



- GENERAL NOTES:**
1. TUBULAR STEEL, STEEL PLATES, AND SHAPES SHALL BE WEATHERING STEEL AS SPECIFIED. WELD ALL JOINTS. JOINTS SHALL BE TIGHT SO THAT MOISTURE CANNOT ENTER BETWEEN PLIES OF MATERIAL. ROUND OR CHAMFER ALL SHARP EDGES AND CORNERS.
 2. INSTALL HEAVY DUTY BARREL WELD-ON PIVOT HINGES AS SHOWN AND AS SPECIFIED. INSTALL BOTH HINGES TO SUPPORT THE DOOR. HINGES SHALL BE IN-LINE AND OPERATE SMOOTHLY WHEN THE DOOR IS HUNG.
 3. CONSTRUCT AND INSTALL THE DOOR AND DOOR FRAME TRUE, SQUARE AND PLUMB. THE DOOR SHALL CLOSE SNUGLY AGAINST THE FRONT FACE OF THE DOOR FRAME WITH NO MORE THAN A 3/8" GAP ALONG THE FRONT FACE OF BOTH SIDES OF THE DOOR AND FRAME WHEN THE DOOR IS CLOSED.
 4. WHEN CLOSING THE DOOR, THE LOCK PLATE SHALL ENTER THE SLOT IN THE LOCK BOX WITHOUT HITTING OR RUBBING THE EDGES OF THE SLOT.
 5. GROUT SHALL BE CONSTRUCTION GRADE.
 7. PLACE A SURVEY MARKER, PROVIDED BY THE PROJECT MANAGER, INTO THE GROUTED ANNULAR.
 8. TOLERANCES ON THE CENTER-TO-CENTER DIMENSIONS BETWEEN POSTS SHALL BE ± 1/16".

ABANDONED MINE LAND PROGRAM MINING AND MINERALS DIVISION ENERGY, MINERALS AND NATURAL RESOURCES DEPARTMENT		
SCALE: 1 1/2" = 1'-0"		DRAWN BY: JTG
DATE: AUG. 24, 2010		REVISED:
FEATURE 3 DETAILS		
Harding Pegmatite Mine Safeguard Project		DRAWING NUMBER: FIGURE 14