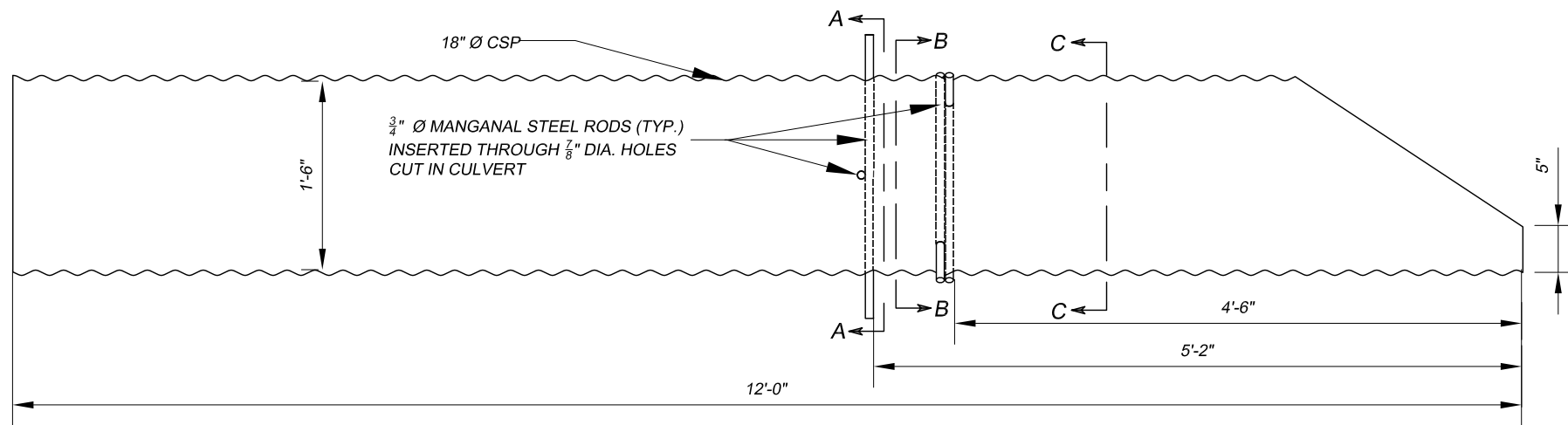


PROFILE VIEW - SECTION

SCALE: $\frac{3}{8}$ "=1'-0"

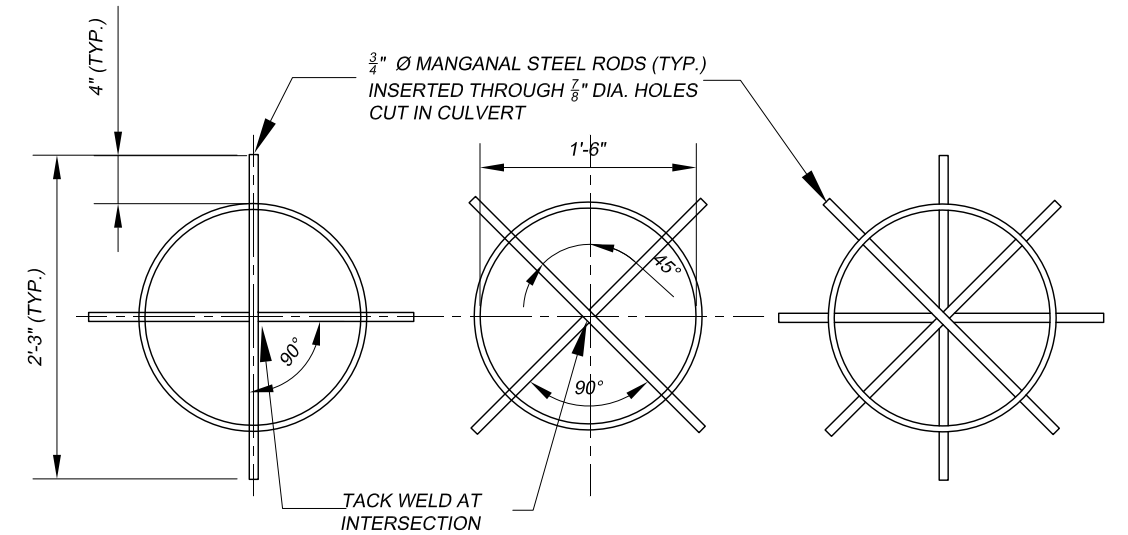
FRONT ELEVATION

SCALE: $\frac{3}{8}$ "=1'-0"



SECTION - CULVERT

SCALE: $\frac{3}{4}$ "=1'-0"



SECTION A-A

SCALE: $\frac{3}{4}$ "=1'-0"

SECTION B-B

SCALE: $\frac{3}{4}$ "=1'-0"

SECTION C-C

SCALE: $\frac{3}{4}$ "=1'-0"

GENERAL NOTES:

1. THIS DRAWING SHOWS THE GENERAL SHAPE AND APPROXIMATE PROFILE OF THE ADIT AT THE INTENDED LOCATION OF THE CLOSURE. USE THE DRAWING AS A GUIDE FOR FIELD LAYOUT OF THE CLOSURE.

2. MANGANAL BARS SHALL BE HIGH MANGANESE STEEL WITH 12% TO 14% MANGANESE. TACK-WELD BARS AT INTERSECTION.

CAUTION - THIS PROJECT REQUIRES CONSTRUCTION WORK IN, AROUND, AND OVER HAZARDOUS AND UNPROTECTED MINE SHAFTS, STOPES, ADITS, HIGHWALLS AND OTHER FEATURES WHICH MAY BE UNSTABLE. THE CONTRACTOR SHALL BE RESPONSIBLE FOR THOROUGHLY INVESTIGATING THE SITE CONDITIONS AND SCHEDULING EQUIPMENT, EQUIPMENT OPERATORS, OPERATIONS, PERSONNEL AND SAFETY PROCEDURES TO PREVENT ACCIDENTS AND INJURIES.

ABANDONED MINE LAND PROGRAM MINING AND MINERALS DIVISION <small>ENERGY, MINERALS AND NATURAL RESOURCES DEPARTMENT</small>		
SCALE: AS SHOWN		DRAWN BY: JTG
DATE: June 17, 2010		REVISED:
FEATURE 4 ADIT		
Harding Pegmatite Mine Safeguard Project		DRAWING NUMBER: FIGURE 15