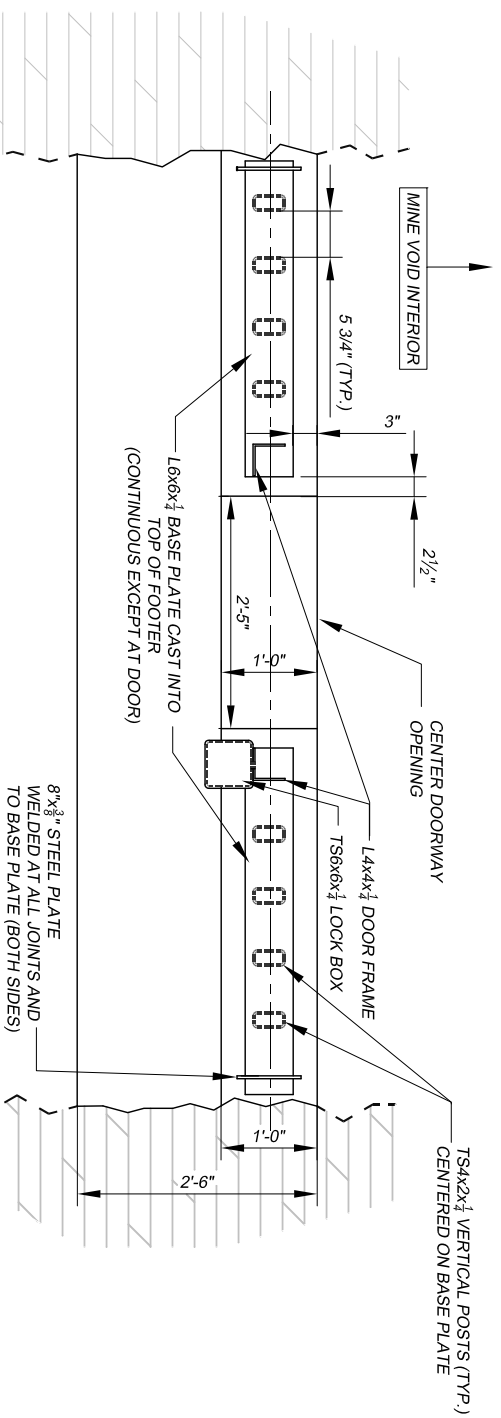


NOTE: BACKFILL NOT SHOWN

FRONT ELEVATION

SCALE: 1/2"=1'-0"

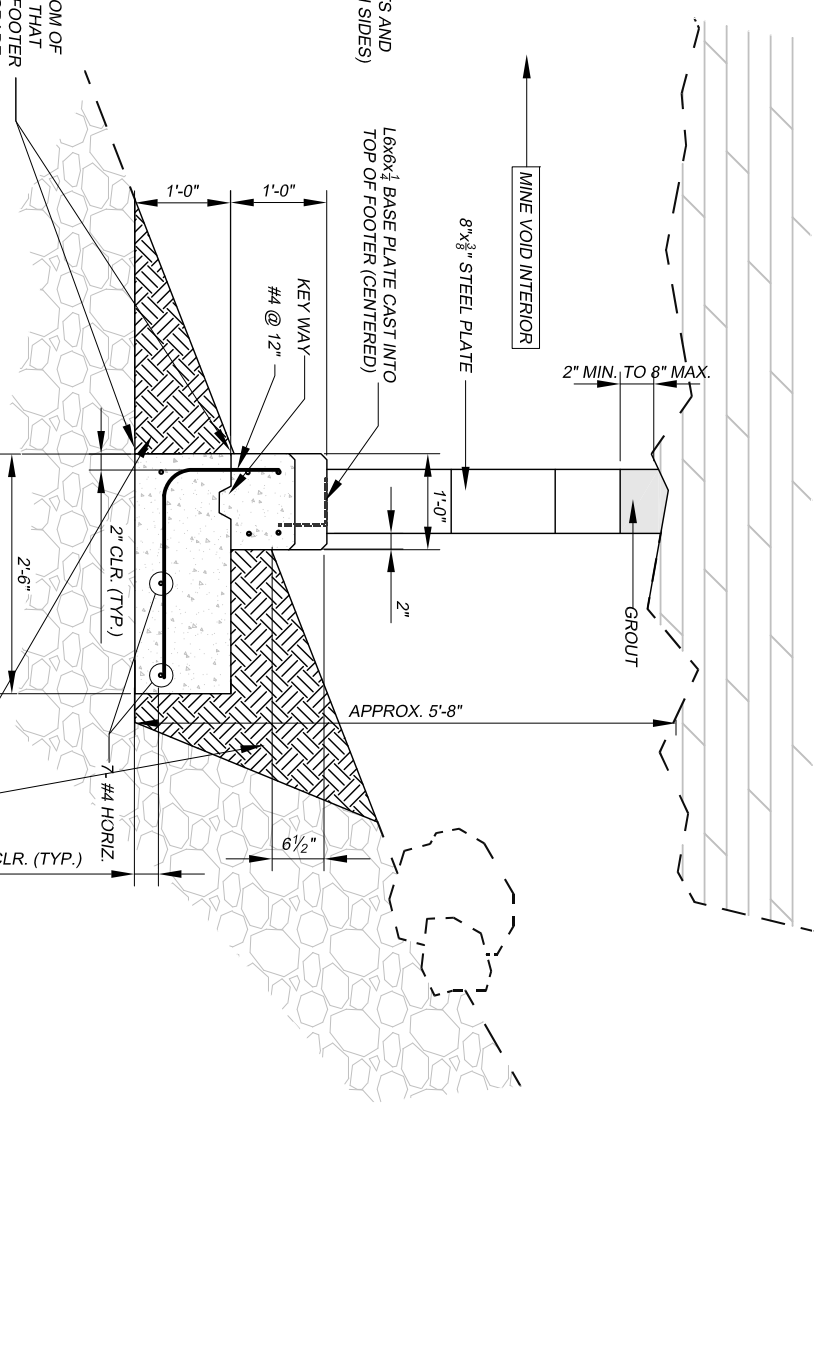


PLAN VIEW - FOOTER DETAILS

SCALE: 1/2"=1'-0"

SEE FIGURE 17 FOR DETAILS

EXCAVATE SO THAT BOTTOM OF FOOTER IS LEVEL AND SO THAT THE LOWER PORTION OF FOOTER IS COMPLETELY BELOW GRADE WHEN BACKFILLED (AS SHOWN)



PROFILE VIEW - SECTION

SCALE: 1/2"=1'-0"

GENERAL NOTES:

1. THIS DRAWING SHOWS THE GENERAL SHAPE AND APPROXIMATE PROFILE OF THE ADIT AT THE INTENDED LOCATION OF THE CLOSURE. USE THE DRAWING AS A GUIDE FOR FIELD LAYOUT OF THE CLOSURE. FIELD VERIFY DIMENSIONS PRIOR TO FABRICATION.
2. EXCAVATE FOOTER BASE AS SHOWN AND TO THE SATISFACTION OF THE AML PROJECT MANAGER. COMPACT FOOTER BASE TO THE SATISFACTION OF THE PROJECT MANAGER PRIOR TO POURING CEMENT FOOTER.
3. TUBULAR STEEL, STEEL PLATES, AND SHAPES SHALL BE WEATHERING STEEL AS SPECIFIED. WELD ALL JOINTS. JOINTS SHALL BE TIGHT SO THAT MOISTURE CANNOT ENTER BETWEEN PILES OF MATERIAL. ROUND OR CHAMFER ALL SHARP EDGES AND CORNERS.
4. INSTALL HEAVY DUTY BARREL WELD-ON PIVOT HINGES AS SHOWN AND AS SPECIFIED. BOTH HINGES SHALL BE INSTALLED TO SUPPORT THE DOOR AND SHALL BE IN-LINE AND OPERATE SMOOTHLY WHEN THE DOOR IS HUNG.
5. CONSTRUCT AND INSTALL THE DOOR AND DOOR FRAME TRUE, SQUARE AND PLUMB. THE DOOR SHALL CLOSE SNUGGLY AGAINST THE FRONT FACE OF THE DOOR FRAME WITH NO MORE THAN A 3/8" GAP AT ANY POINT ALONG THE FRONT FACE OF BOTH SIDES OF THE DOOR AND FRAME WHEN THE DOOR IS CLOSED.
6. GROUT SHALL BE CONSTRUCTION GRADE.
7. PLACE A 3/8" CHAMFER ON ALL EXPOSED EDGES OF CONCRETE FOOTER.
8. TOLERANCES ON THE CENTER--TO-CENTER DIMENSIONS BETWEEN POSTS SHALL BE ±1/8".
9. PLACE A SURVEY MARKER, PROVIDED BY THE PROJECT MANAGER, INTO THE FOOTER.

CAUTION - THIS PROJECT REQUIRES CONSTRUCTION WORK IN, AROUND, AND OVER HAZARDOUS AND UNPROTECTED MINE SHAFTS, STOPS, ADITS, HIGHWALLS AND OTHER FEATURES WHICH MAY BE UNSTABLE. THE CONTRACTOR SHALL BE RESPONSIBLE FOR THOROUGHLY INVESTIGATING THE SITE CONDITIONS AND SCHEDULING EQUIPMENT, EQUIPMENT OPERATORS, OPERATIONS, PERSONNEL AND SAFETY PROCEDURES TO PREVENT ACCIDENTS AND INJURIES.

ABANDONED MINE LAND PROGRAM MINING AND MINERALS DIVISION ENERGY, MINERALS AND NATURAL RESOURCES DEPARTMENT	
SCALE: 1/2" = 1'-0"	DRAWN BY: JTG
DATE: SEPT. 29, 2010	REVISED:
FEATURE 5 ADIT	
Harding Pegmatite Mine Safeguard Project	DRAWING NUMBER FIGURE 16