

ELEVATION - OUTSIDE, LOOKING IN

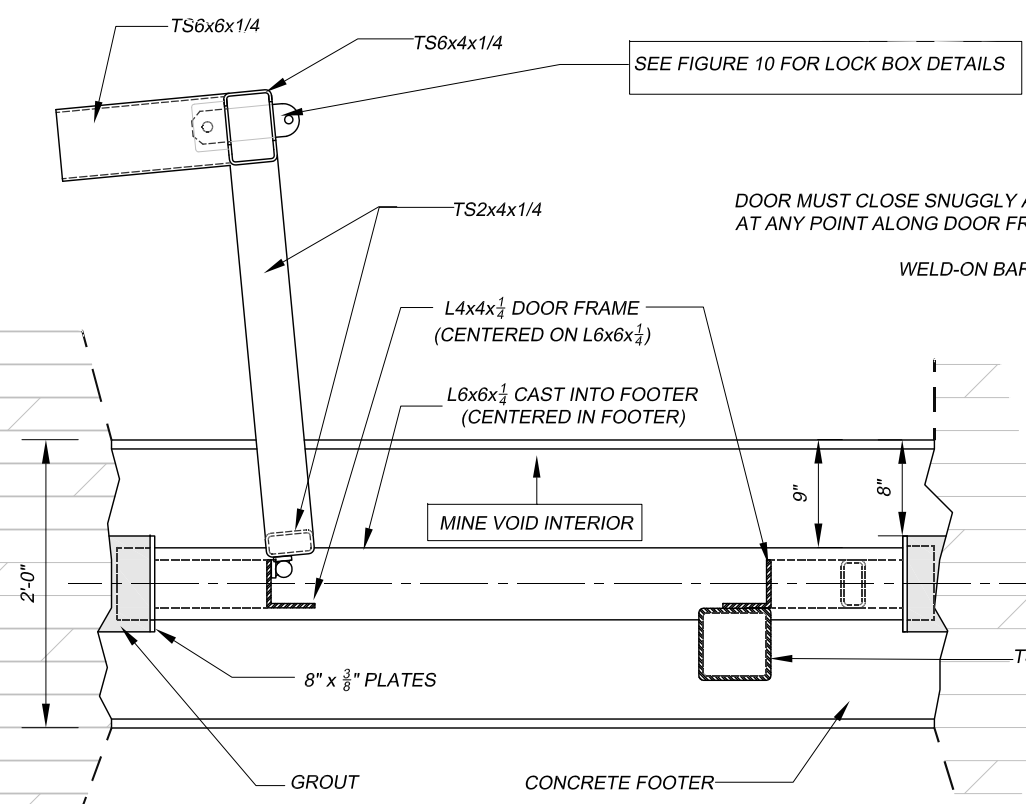
ELEVATION - INSIDE, LOOKING OUT

SECTION (DOOR NOT SHOWN)

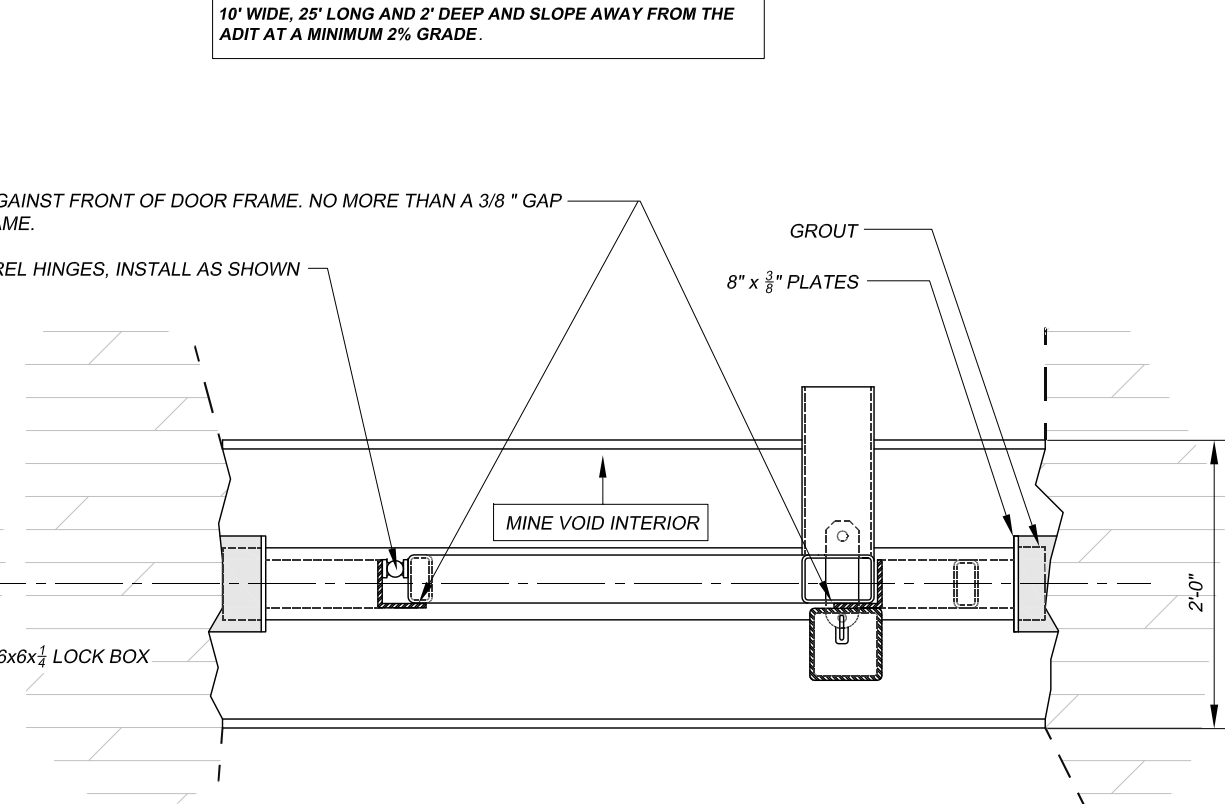
NOTE: CLEAR AN AREA IN FRONT OF THE ADIT APPROXIMATELY 10' WIDE, 25' LONG AND 2' DEEP AND SLOPE AWAY FROM THE ADIT AT A MINIMUM 2% GRADE.

GENERAL NOTES:

1. THIS DRAWING SHOWS THE GENERAL SHAPE AND APPROXIMATE PROFILE OF THE ADIT AT THE INTENDED LOCATION OF THE CLOSURE. USE THE DRAWING AS A GUIDE FOR FIELD LAYOUT OF THE CLOSURE. FIELD VERIFY DIMENSIONS PRIOR TO FABRICATION.
2. TUBULAR STEEL, STEEL PLATES, AND SHAPES SHALL BE WEATHERING STEEL AS SPECIFIED. WELD ALL JOINTS. JOINTS SHALL BE TIGHT SO THAT MOISTURE CANNOT ENTER BETWEEN PLIES OF MATERIAL. ROUND OR CHAMFER ALL SHARP EDGES AND CORNERS.
3. PRIOR TO CONSTRUCTING THE FOOTER, REMOVE RUBBLE AND LEVEL THE FLOOR IN THE AREA OF THE CLOSURE AS SHOWN IN THE DRAWING AND AS DIRECTED BY THE AML PROJECT MANAGER. COMPACT THE FOOTER BASE TO THE SATISFACTION OF THE PROJECT MANAGER, PRIOR TO POURING CEMENT FOOTER.
4. INSTALL HEAVY DUTY BARREL WELD-ON PIVOT HINGES (1000 lb/PAIR CAPACITY) AS SHOWN AND AS SPECIFIED. BOTH HINGES SHALL BE INSTALLED TO SUPPORT THE DOOR AND SHALL BE IN-LINE AND OPERATE SMOOTHLY WHEN THE DOOR IS HUNG.
5. CONSTRUCT AND INSTALL THE DOOR AND DOOR FRAME TRUE, SQUARE AND PLUMB. THE DOOR SHALL CLOSE SNUGLY AGAINST THE FRONT FACE OF THE DOOR FRAME WITH NO MORE THAN A 3/8" GAP AT ANY POINT ALONG THE FRONT FACE OF BOTH SIDES OF THE DOOR AND FRAME WHEN THE DOOR IS CLOSED.
6. GROUT SHALL BE CONSTRUCTION GRADE.
7. PLACE A 3/4" CHAMFER ON ALL EXPOSED EDGES OF CONCRETE FOOTER.
8. TOLERANCES ON THE CENTER-TO-CENTER DIMENSIONS BETWEEN POSTS SHALL BE ± 1/16".
9. PLACE A SURVEY MARKER, PROVIDED BY THE PROJECT MANAGER, INTO THE GROUTED LINTEL.



PLAN VIEW - DOOR OPEN



PLAN VIEW - DOOR CLOSED

<b>ABANDONED MINE LAND PROGRAM</b> <b>MINING AND MINERALS DIVISION</b> ENERGY, MINERALS AND NATURAL RESOURCES DEPARTMENT		
SCALE: 3/4"=1'-0"		DRAWN BY: JTG
DATE: AUG. 24, 2010		REVISED:
<b>FEATURE 10 ADIT</b>		
Harding Pegmatite Mine Safeguard Project		DRAWING NUMBER: <b>FIGURE 18</b>