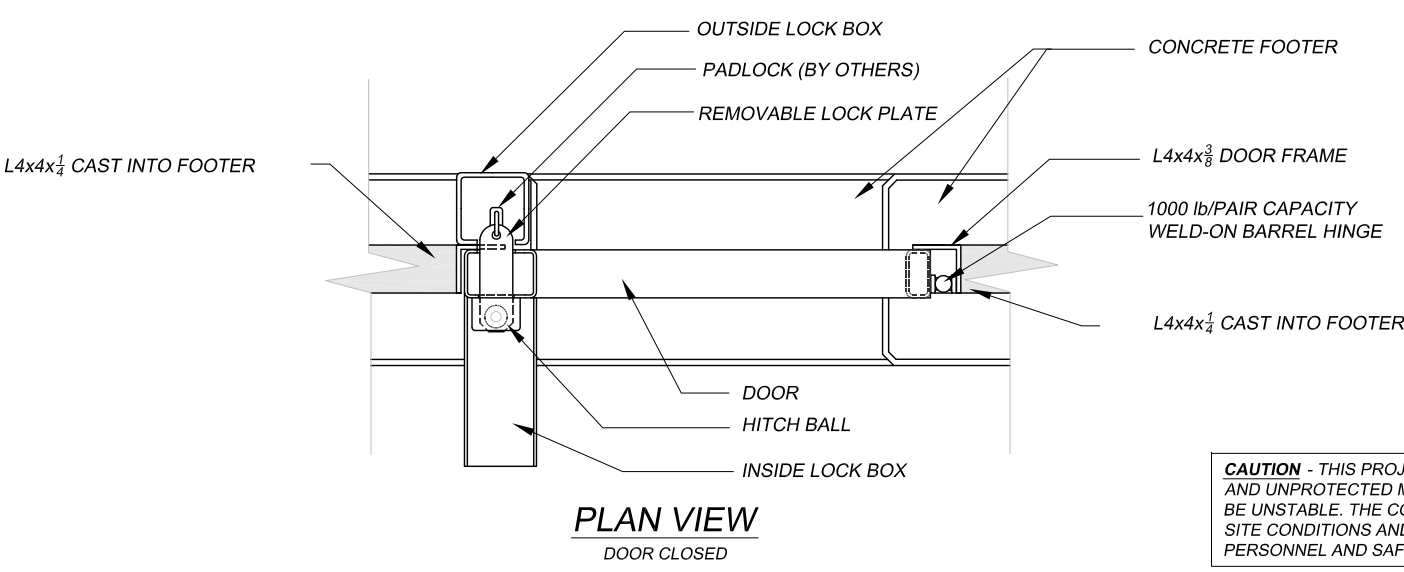
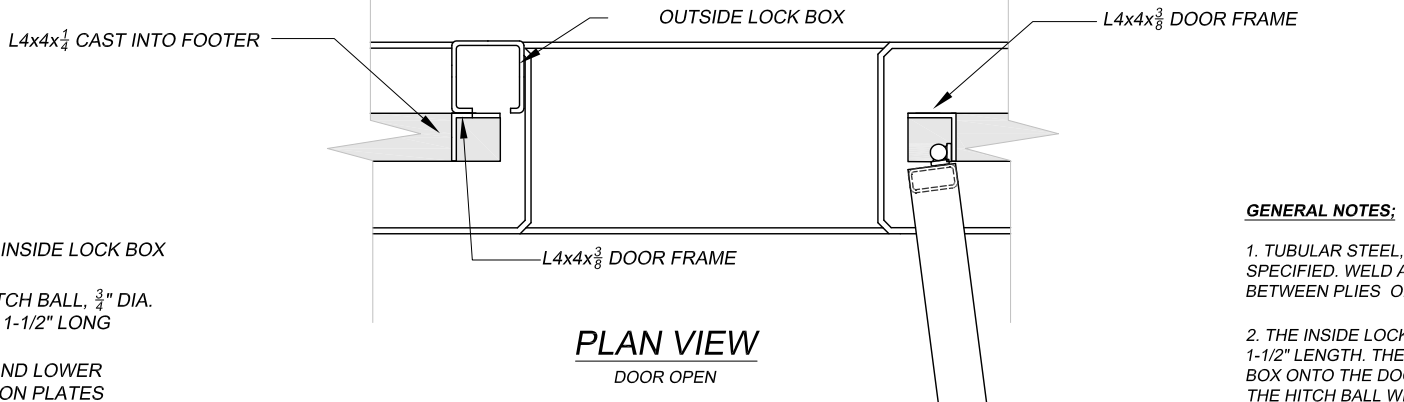


**DOOR SECTION - DOOR SLIGHTLY OPEN**

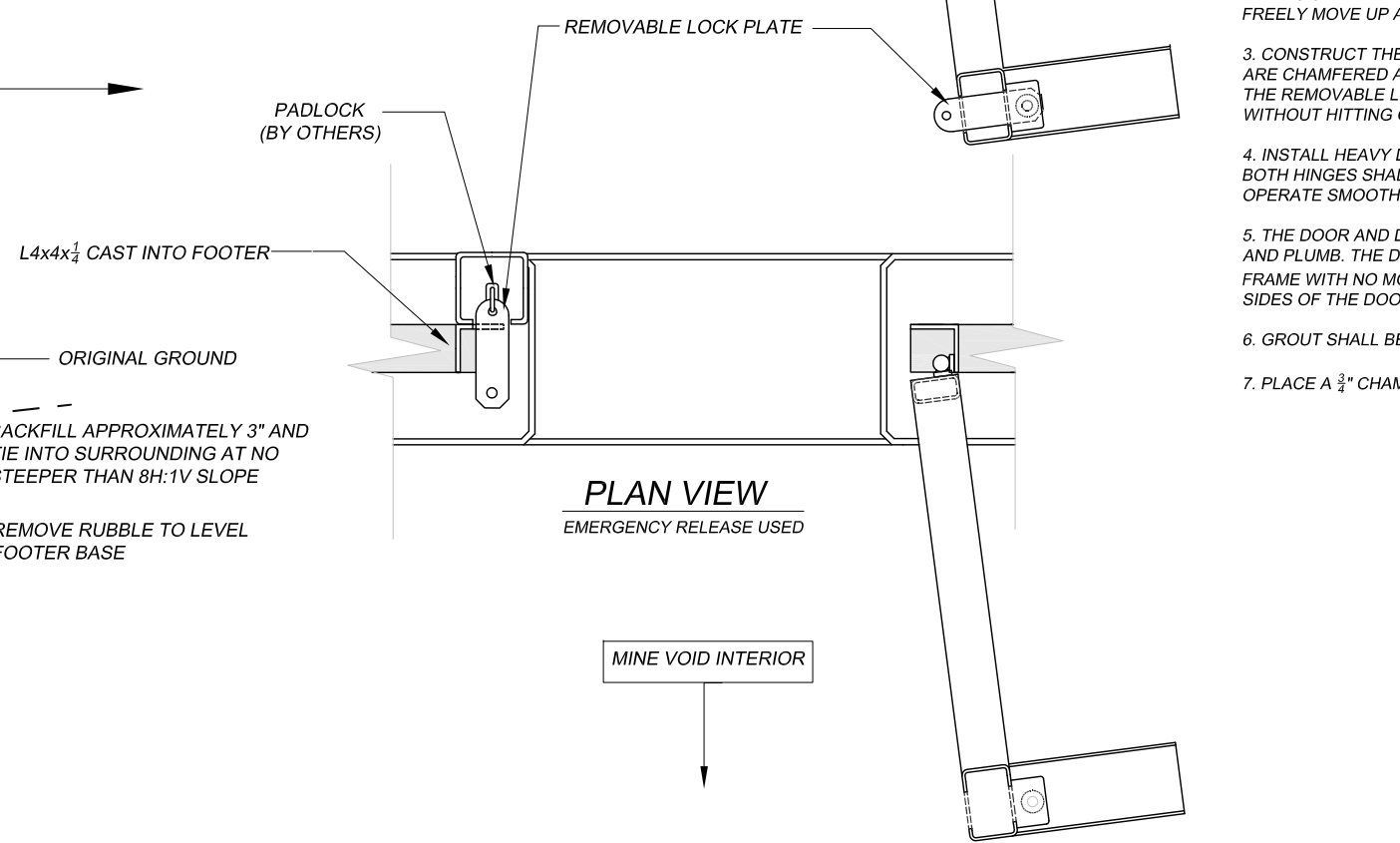
SCALE: 3/4"=1'-0"



**PLAN VIEW  
DOOR CLOSED**



**PLAN VIEW  
DOOR OPEN**



**PLAN VIEW  
EMERGENCY RELEASE USED**

**CAUTION** - THIS PROJECT REQUIRES CONSTRUCTION WORK IN, AROUND, AND OVER HAZARDOUS AND UNPROTECTED MINE SHAFTS, STOPS, ADITS, HIGHWALLS AND OTHER FEATURES WHICH MAY BE UNSTABLE. THE CONTRACTOR SHALL BE RESPONSIBLE FOR THOROUGHLY INVESTIGATING THE SITE CONDITIONS AND SCHEDULING EQUIPMENT, EQUIPMENT OPERATORS, OPERATIONS, PERSONNEL AND SAFETY PROCEDURES TO PREVENT ACCIDENTS AND INJURIES.

**GENERAL NOTES:**

1. TUBULAR STEEL, STEEL PLATES, AND SHAPES SHALL BE WEATHERING STEEL AS SPECIFIED. WELD ALL JOINTS. JOINTS SHALL BE TIGHT SO THAT MOISTURE CANNOT ENTER BETWEEN PLIES OF MATERIAL. ROUND OR CHAMFER ALL SHARP EDGES AND CORNERS.
2. THE INSIDE LOCK BOX INCORPORATES A 1-7/8" HITCH BALL WITH A 3/4" Ø SHANK CUT TO A 1-1/2" LENGTH. THE HITCH BALL MUST BE INSTALLED PRIOR TO WELDING THE INSIDE LOCK BOX ONTO THE DOOR. THE INSIDE LOCK BOX SHALL BE CONSTRUCTED SO THAT RAISING THE HITCH BALL WILL RELEASE THE REMOVABLE LOCK PLATE BUT NOT ALLOW REMOVAL OF THE HITCH BALL. THIS MECHANISM WILL ACT AS AN EMERGENCY LOCK RELEASE IN THE EVENT THAT SOMEONE IS TRAPPED BEHIND THE LOCKED DOOR. (NOTE: THE UPPER AND LOWER RETENTION PLATES ARE **NOT THREADED**. THE UPPER AND LOWER RETENTION PLATES SHALL BE DRILLED WITH A 7/8" Ø HOLE WHICH SHALL ALLOW THE HITCH BALL TO FREELY MOVE UP AND DOWN.)
3. CONSTRUCT THE LOCKING MECHANISM SO THAT THE EXPOSED EDGES OF ALL PARTS ARE CHAMFERED AND OPERATE SMOOTHLY WITHOUT BINDING. WHEN CLOSING THE DOOR, THE REMOVABLE LOCK PLATE SHALL ENTER THE SLOT IN THE OUTSIDE LOCK BOX WITHOUT HITTING OR RUBBING THE EDGES OF THE SLOT.
4. INSTALL HEAVY DUTY BARREL WELD-ON PIVOT HINGES AS SHOWN AND AS SPECIFIED. BOTH HINGES SHALL BE INSTALLED TO SUPPORT THE DOOR AND SHALL BE IN-LINE AND OPERATE SMOOTHLY WHEN THE DOOR IS HUNG.
5. THE DOOR AND DOOR FRAME SHALL BE CONSTRUCTED AND INSTALLED TRUE, SQUARE AND PLUMB. THE DOOR SHALL CLOSE SNUGLY AGAINST THE FRONT FACE OF THE DOOR FRAME WITH NO MORE THAN A 3/8" GAP AT ANY POINT ALONG THE FRONT FACE OF BOTH SIDES OF THE DOOR AND FRAME WHEN THE DOOR IS CLOSED.
6. GROUT SHALL BE CONSTRUCTION GRADE.
7. PLACE A 3/4" CHAMFER ON ALL EXPOSED EDGES OF CONCRETE FOOTER.

ABANDONED MINE LAND PROGRAM MINING AND MINERALS DIVISION ENERGY, MINERALS AND NATURAL RESOURCES DEPARTMENT		
SCALE: 3/4"=1'-0"		DRAWN BY: JTG
DATE: AUG. 24, 2010		REVISED:
<b>DOOR AND LOCK DETAILS</b>		
Harding Pegmatite Mine Safeguarding Project		DRAWING NUMBER: <b>FIGURE 9</b>