

# EL SEGUNDO 2022 BOND PERMIT NUMBER 2020-01 PHASE 5 CUT-FILL BOUNDARIES

VOLUME BY TRIANGULATION - TOW TRIANGULATION SURFACE VOLUMES  
EXISTING SURFACE: 04-PHASE4.TIN  
FINAL SURFACE: 05-PHASE5.TIN  
EXISTING SURFACE SHOWN AS MAGENTA CONTOURS

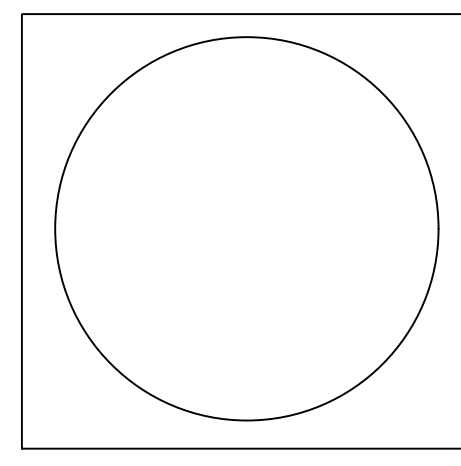
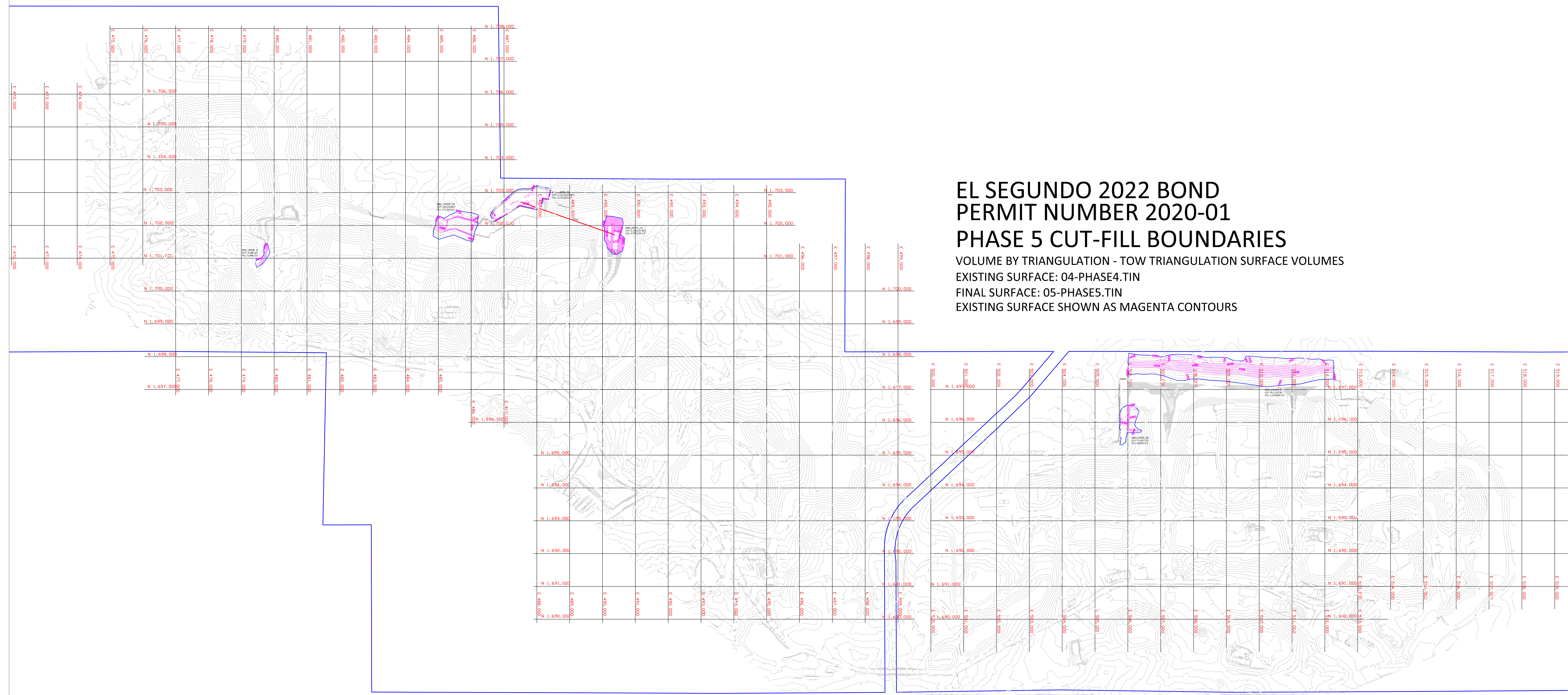
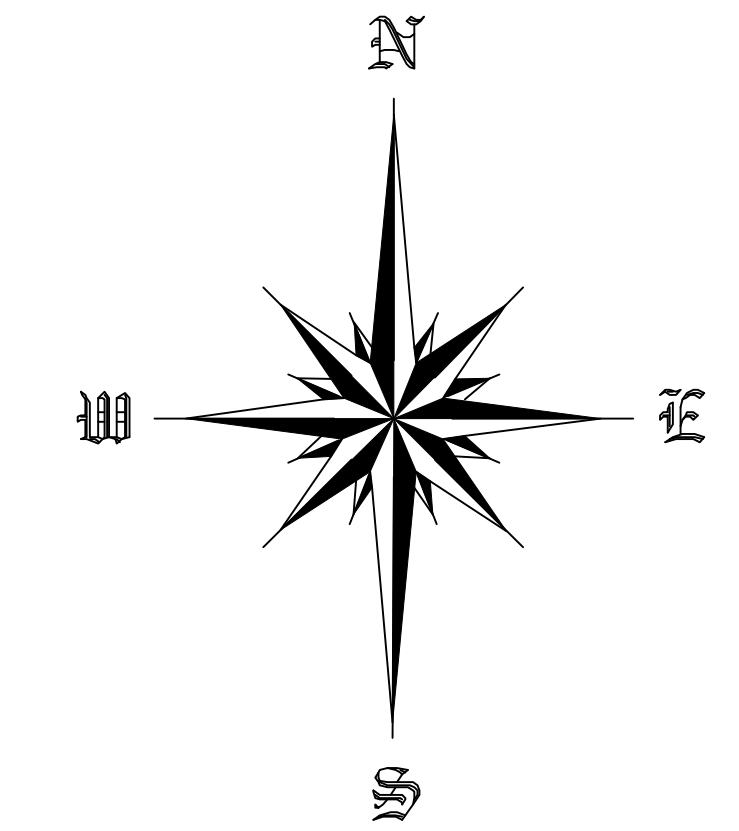
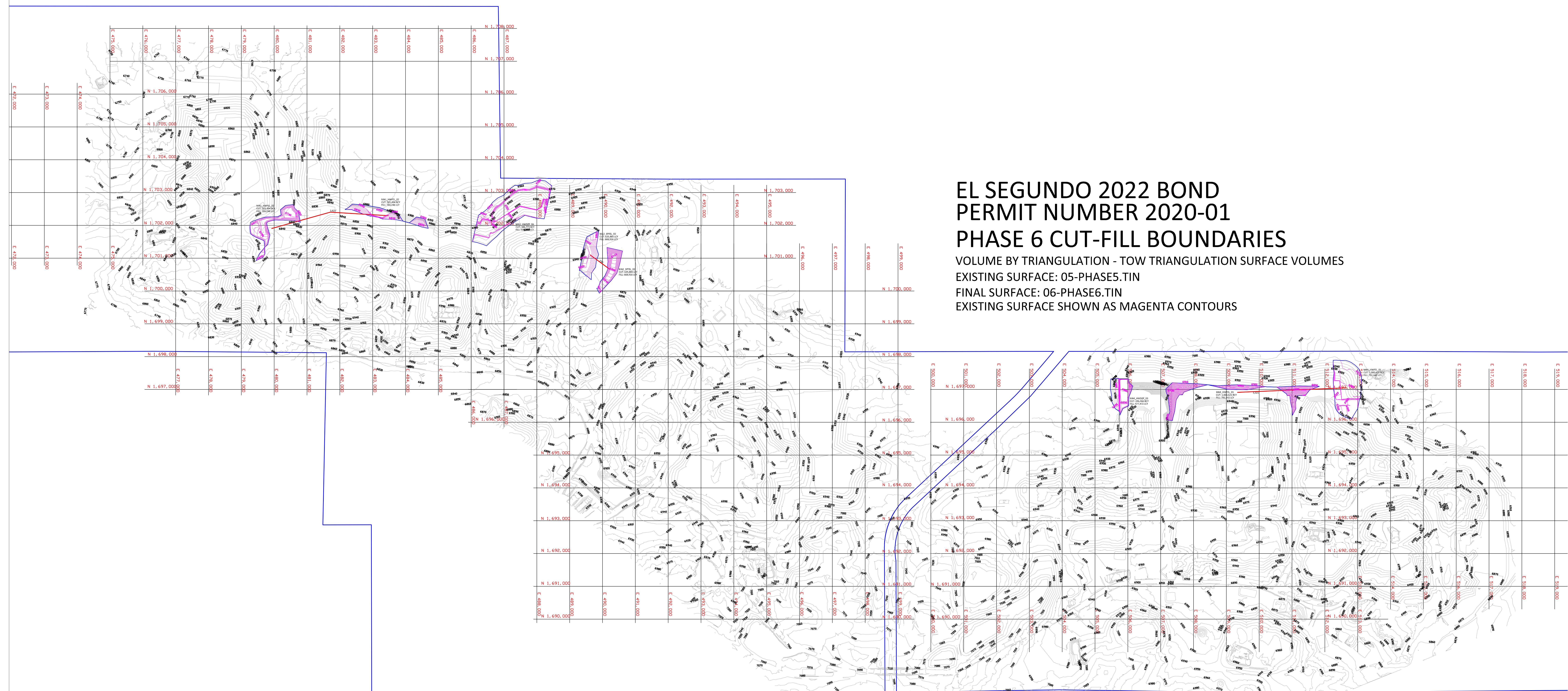


Figure 6



 <b>EL SEGUNDO MINE</b> McKinley County, New Mexico	
Phase 5 Reclamation Volume Map 2022 El Segundo Bond Proposal Figure 6 Permit No. 2020 -01	
DATE: 8/18/2022 SCALE: 1" = 1000'	DRAWN BY: CJS CHECKED BY: CJS
<b>PEABODY NATURAL RESOURCES COMPANY</b> P.O. BOX 757 GRANTS, NM 87020	



**EL SEGUNDO 2022 BOND  
PERMIT NUMBER 2020-01  
PHASE 6 CUT-FILL BOUNDARIES**  
 VOLUME BY TRIANGULATION - TOW TRIANGULATION SURFACE VOLUMES  
 EXISTING SURFACE: 05-PHASE5.TIN  
 FINAL SURFACE: 06-PHASE6.TIN  
 EXISTING SURFACE SHOWN AS MAGENTA CONTOURS

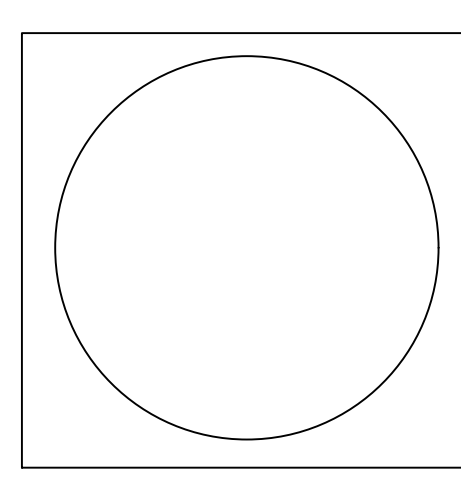
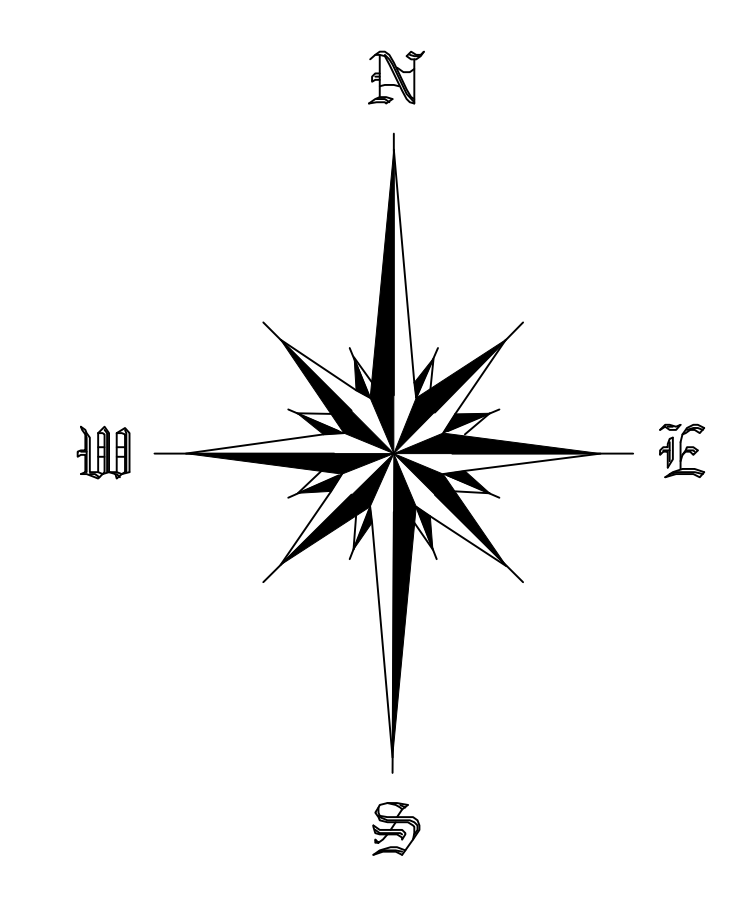
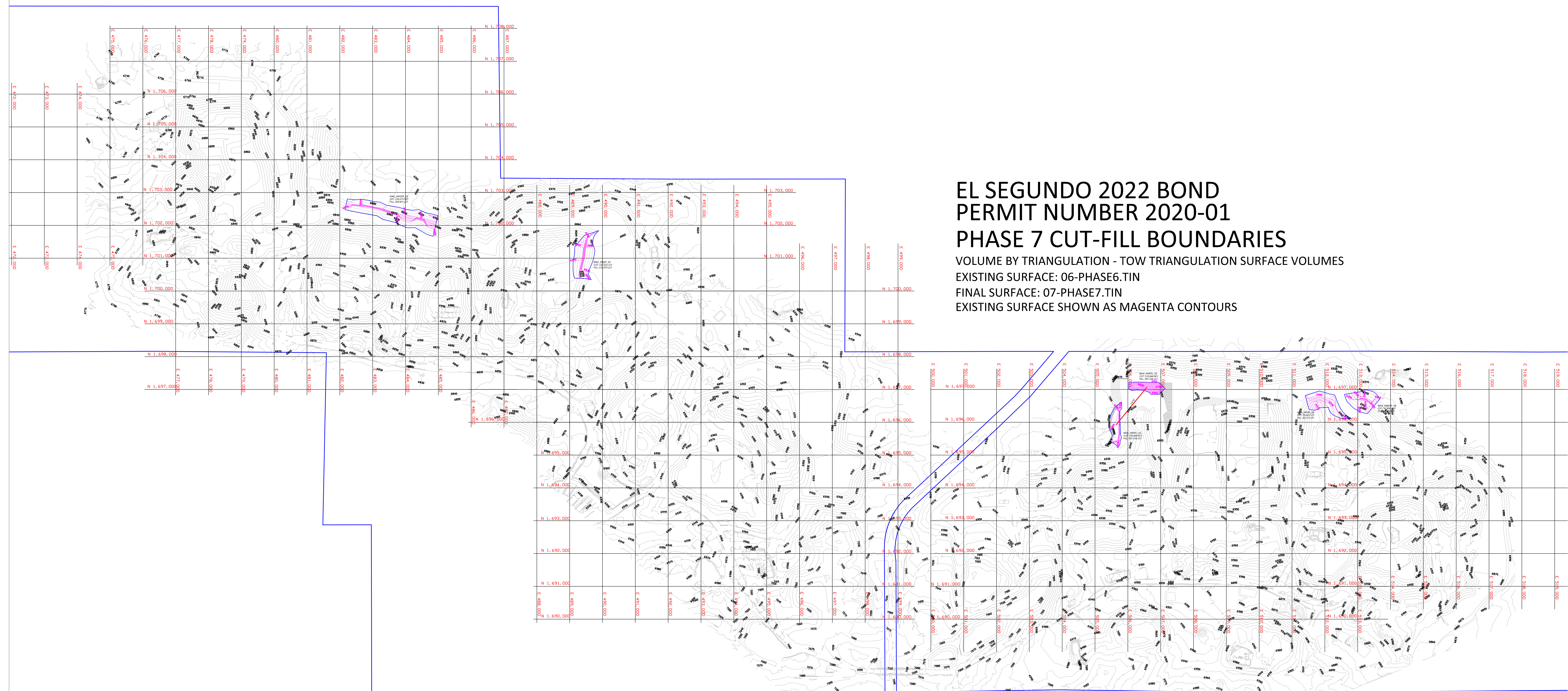


Figure 7



 <b>EL SEGUNDO MINE</b> McKinley County, New Mexico Phase 6 Reclamation Volume Map 2022 El Segundo Bond Proposal Figure 7 Permit No. 2020 -01	
DATE: 8/18/2022 SCALE: 1" = 1000'	DRAWN BY: CJS CHECKED BY: CJS
<b>PEABODY NATURAL RESOURCES COMPANY</b> P.O. BOX 757 GRANTS, NM 87020	



**EL SEGUNDO 2022 BOND  
PERMIT NUMBER 2020-01  
PHASE 7 CUT-FILL BOUNDARIES**  
 VOLUME BY TRIANGULATION - TOW TRIANGULATION SURFACE VOLUMES  
 EXISTING SURFACE: 06-PHASE6.TIN  
 FINAL SURFACE: 07-PHASE7.TIN  
 EXISTING SURFACE SHOWN AS MAGENTA CONTOURS

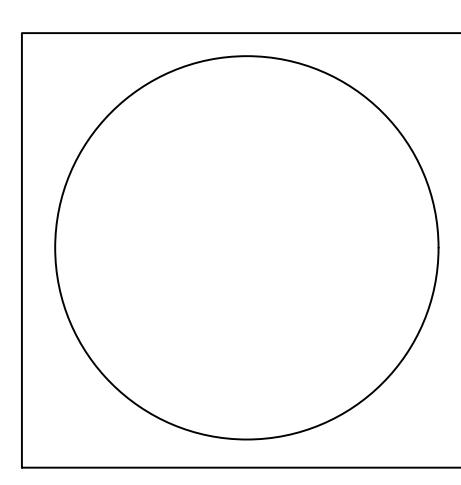
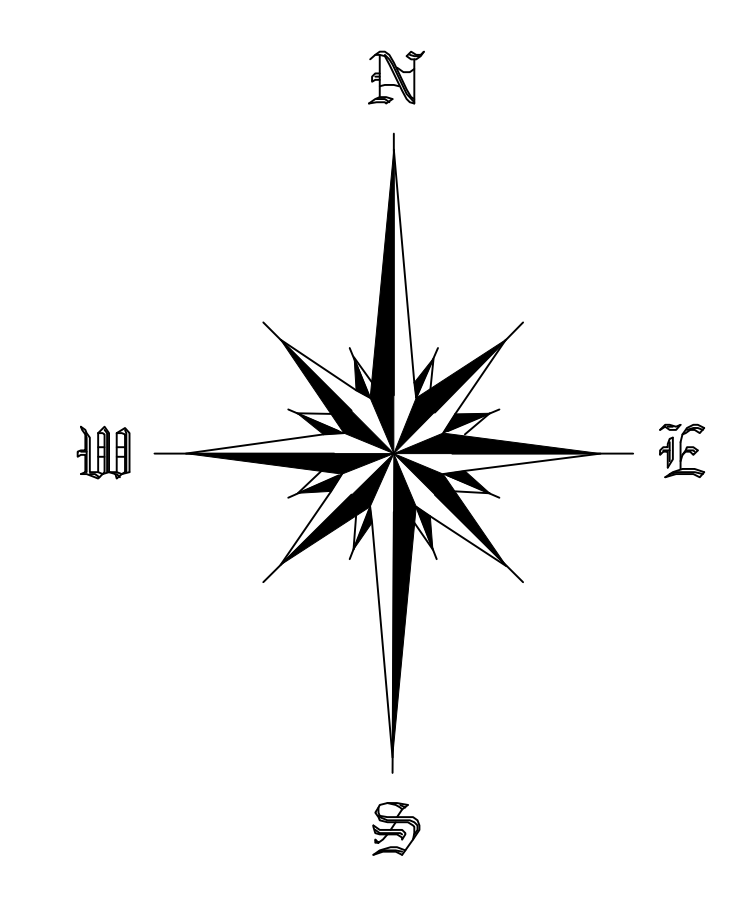

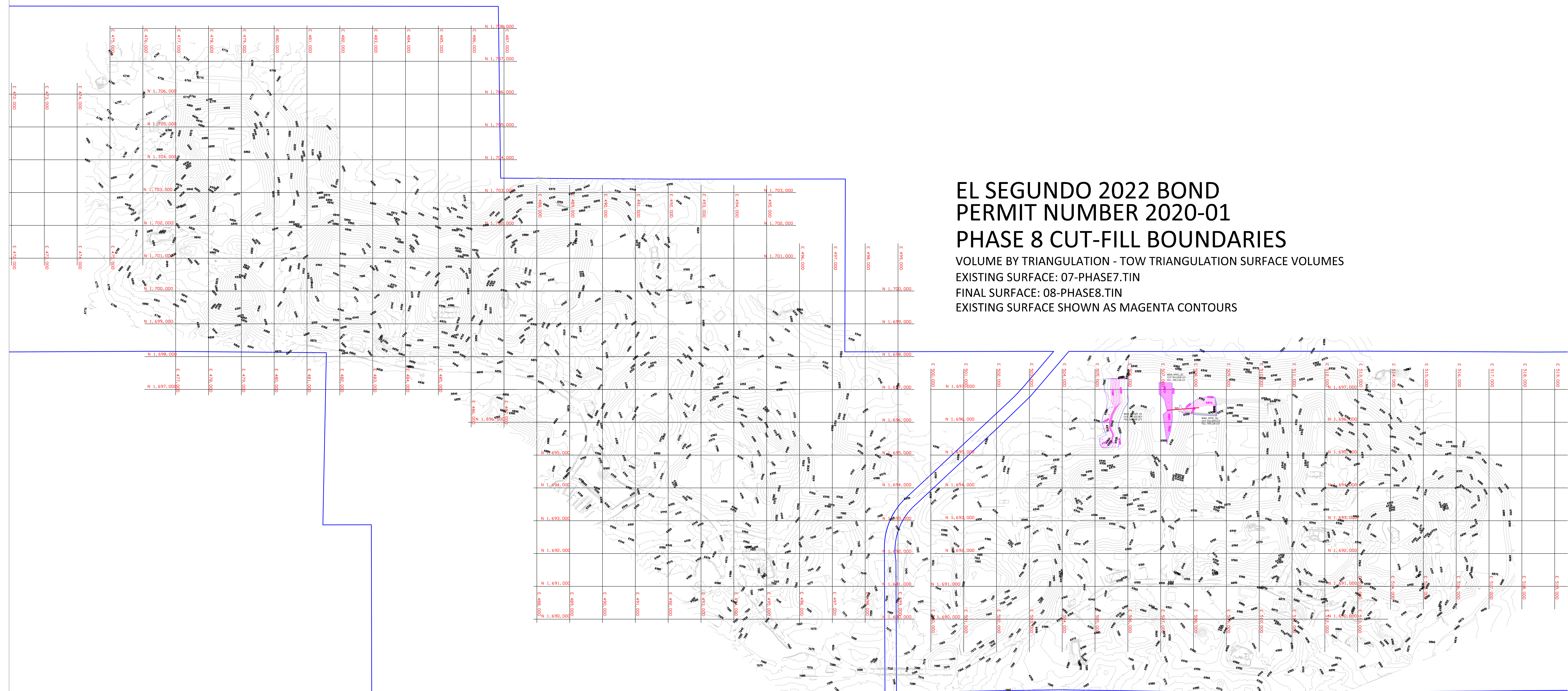


Figure 8



 <b>EL SEGUNDO MINE</b> McKinley County, New Mexico Phase 7 Reclamation Volume Map 2022 El Segundo Bond Proposal Figure 8 Permit No. 2020 -01	
DATE: 8/18/2022 SCALE: 1" = 1000'	DRAWN BY: CJS CHECKED BY: CJS
<b>PEABODY NATURAL RESOURCES COMPANY</b> P.O. BOX 757 GRANTS, NM 87020	



**EL SEGUNDO 2022 BOND  
PERMIT NUMBER 2020-01  
PHASE 8 CUT-FILL BOUNDARIES**  
 VOLUME BY TRIANGULATION - TOW TRIANGULATION SURFACE VOLUMES  
 EXISTING SURFACE: 07-PHASE7.TIN  
 FINAL SURFACE: 08-PHASE8.TIN  
 EXISTING SURFACE SHOWN AS MAGENTA CONTOURS

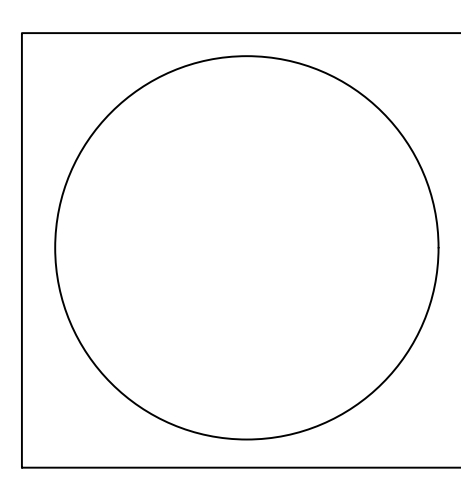
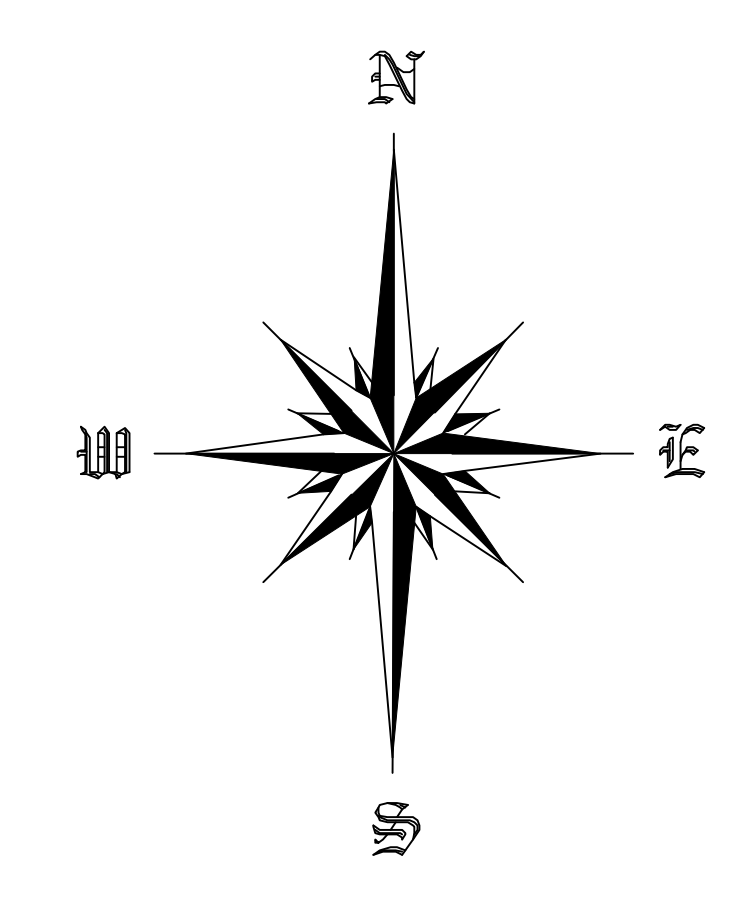


Figure 9



 <b>EL SEGUNDO MINE</b> McKinley County, New Mexico Phase 8 Reclamation Volume Map 2022 El Segundo Bond Proposal Figure 9 Permit No. 2020 -01	
DATE: 8/18/2022 SCALE: 1" = 1000'	DRAWN BY: CJS CHECKED BY: CJS
<b>PEABODY NATURAL RESOURCES COMPANY</b> P.O. BOX 757 GRANTS, NM 87020	

# EL SEGUNDO 2022 BOND PERMIT NUMBER 2020-01 PHASE 9 CUT-FILL BOUNDARIES

VOLUME BY TRIANGULATION - TOW TRIANGULATION SURFACE VOLUMES  
EXISTING SURFACE: 08-PHASE8.TIN  
FINAL SURFACE: 09-PHASE9.TIN  
EXISTING SURFACE SHOWN AS MAGENTA CONTOURS

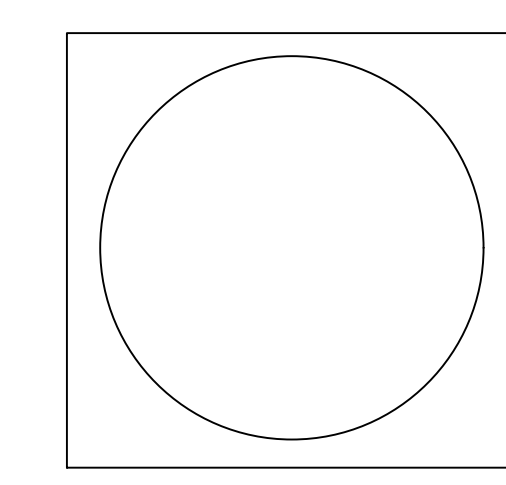
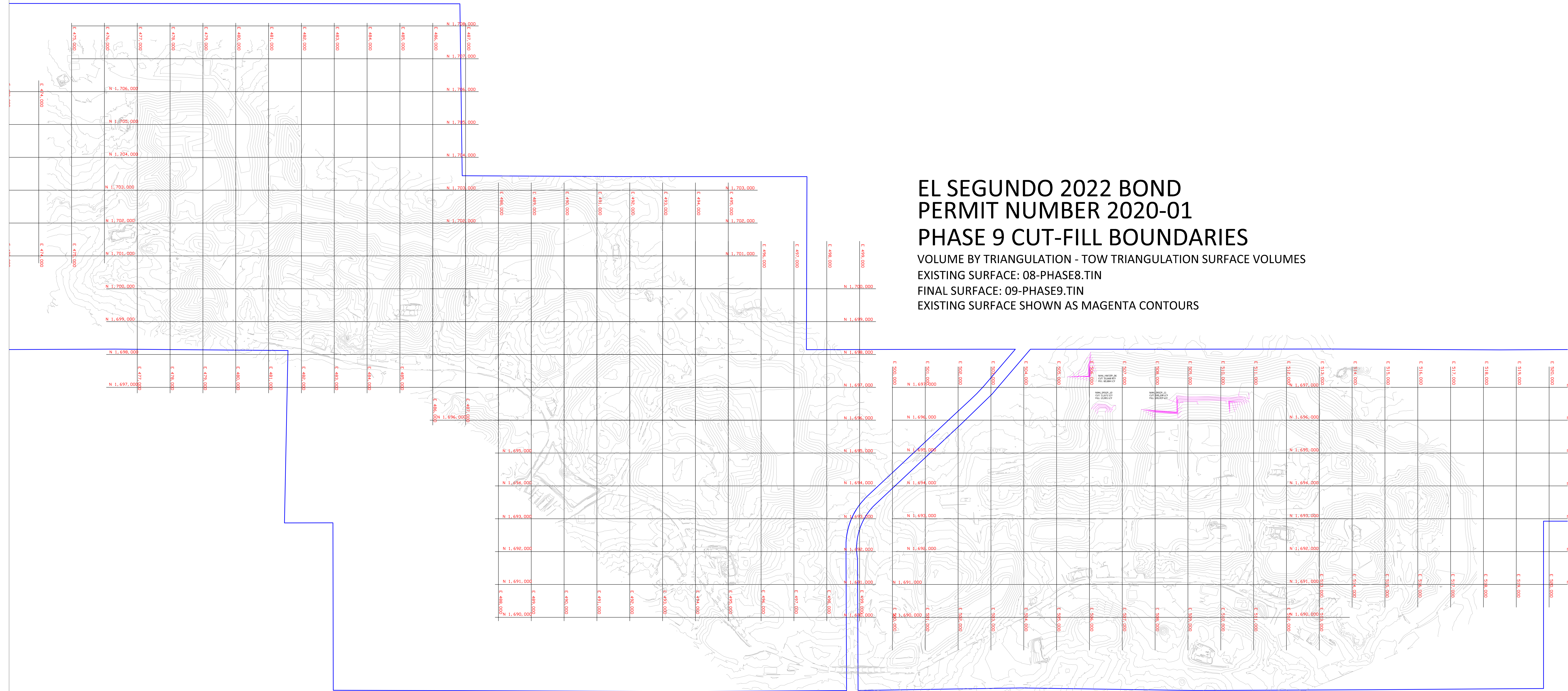
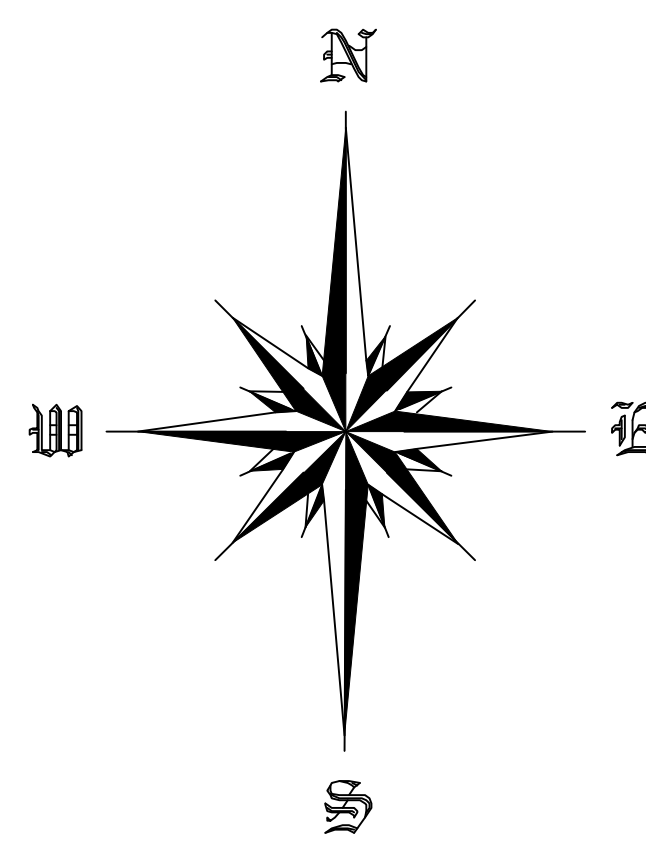
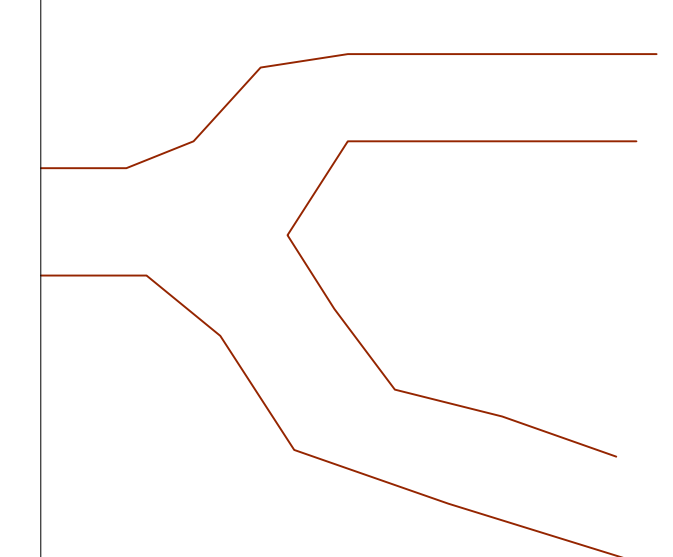
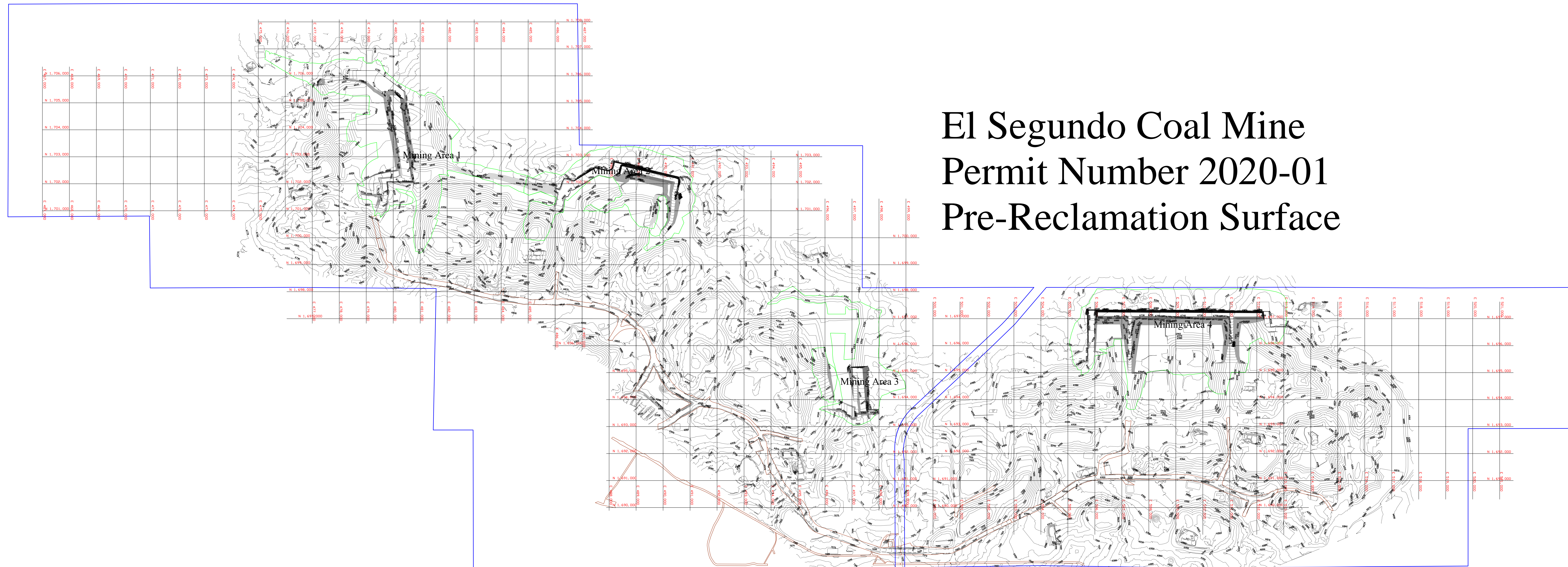


Figure 10

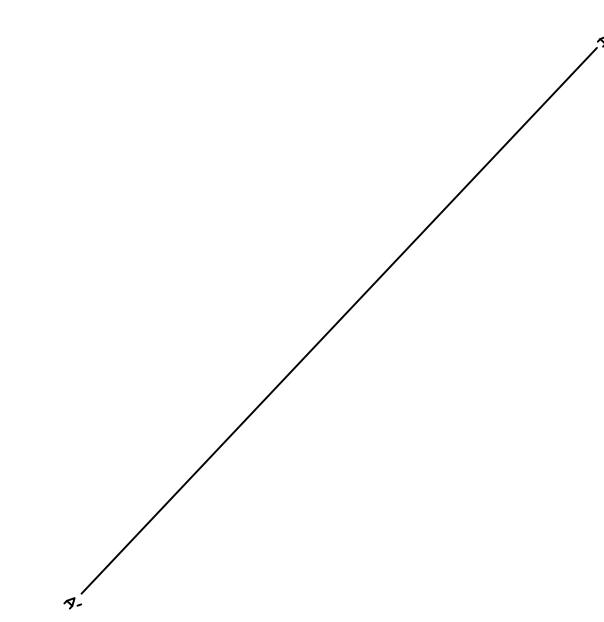


 <b>EL SEGUNDO MINE</b> McKinley County, New Mexico Phase 9 Reclamation Volume Map 2022 El Segundo Bond Proposal Figure 10 Permit No. 2020 -01	
DATE: 8/18/2022 SCALE: 1" = 1000'	DRAWN BY: CJS CHECKED BY: CJS
<b>PEABODY NATURAL RESOURCES COMPANY</b> P.O. BOX 757 GRANTS, NM 87020	

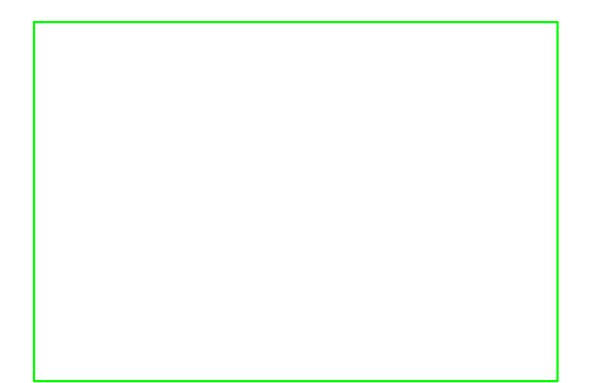
# El Segundo Coal Mine Permit Number 2020-01 Pre-Reclamation Surface



Roads



Cross Section Locations



Mining Area Boundaries

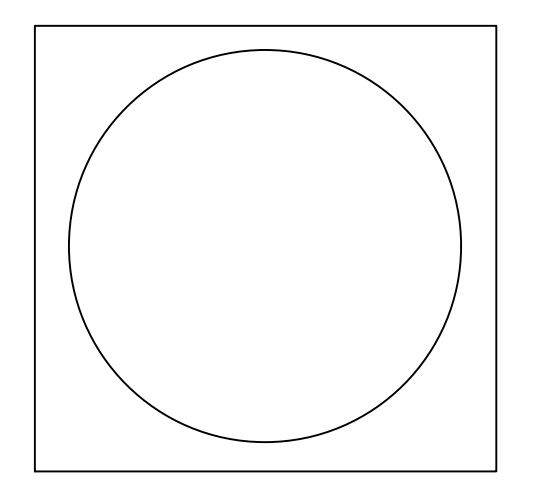
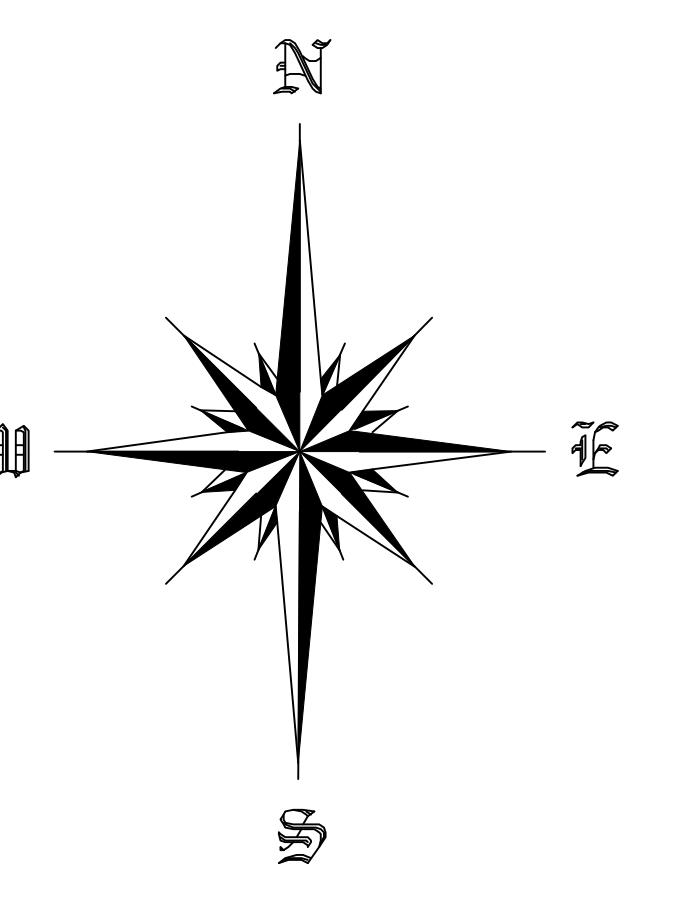
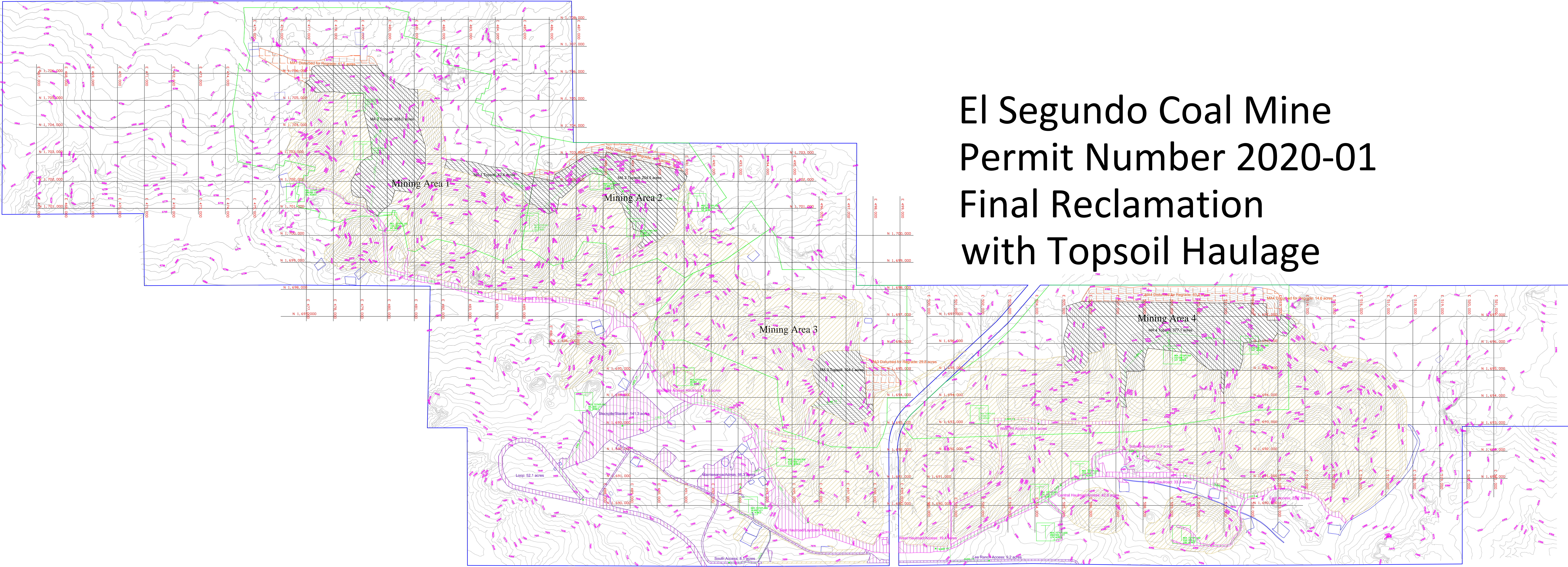


Figure 11



 <b>EL SEGUNDO MINE</b> McKinley County, New Mexico	
Overall Pre-Reclamation Surface - Figure 11 2022 Bond Proposal Permit No. 2020-01	
DATE: 8/18/22 SCALE: 1" = 1000'	DRAWN BY: CJS CHECKED BY: CJS
<b>PEABODY NATURAL RESOURCES COMPANY</b> P.O. BOX 757 GRANTS, NM 87020	

# El Segundo Coal Mine Permit Number 2020-01 Final Reclamation with Topsoil Haulage



Topsoil Haul Routes

Pond Boundary & Pond Disturbance Boundary

Topsoil Removed/Replaced for Reclamation Plan

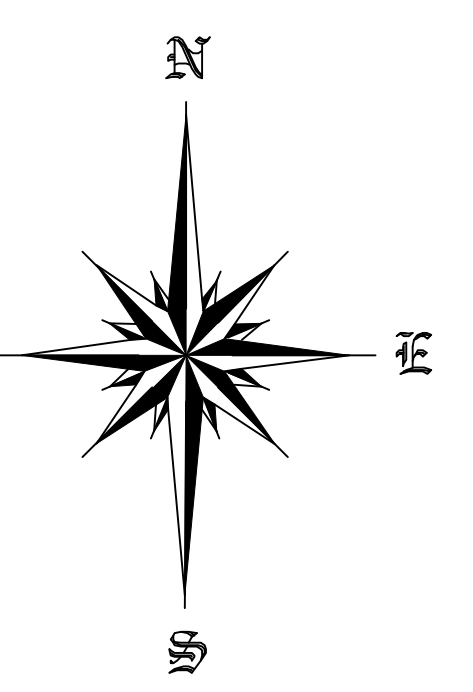
Facilities

Topsoil Stockpiles

Topsoiled by EOY 2023

Topsoil Laydown Area

Figure 12



 <b>EL SEGUNDO MINE</b> McKinley County, New Mexico Final Reclamation with Topsoil Areas 2022 El Segundo Bond Proposal Figure 12 Permit No. 2020-01	
DATE: 8/18/2022 SCALE: 1" = 1000'	DRAWN BY: CIS CHECKED BY: CIS
<b>PEABODY NATURAL RESOURCES COMPANY</b> P.O. BOX 757 GRANTS, NM 87020	

SECTION V  
MA - 1



MA-1 Dozer Ripping				Eq Rate	Operator	Duty Factor	Total / Hr	Amount
Equipment		Yards	Hours					
Cat D-10T	MA1	2,785,680	2,073.2	\$ 199.04	41.45	1.0	\$ 240.49	\$ 498,580.39

MA-1 Dozer Push				Eq Rate	Operator	Duty Factor	Total / Hr	Amount
Equipment		Yards	Hours					
Cat D-11T Highwall	MA1	460,999	282	\$ 319.17	41.45	1.0	\$ 360.62	\$ 101,632.29
Cat D-11T Spoil	MA1	2,877,840	1,624	\$ 319.17	41.45	1.0	\$ 360.62	\$ 585,641.34

MA-1 Truck Shovel Haul				Eq Rate	Operator	Duty Factor	Total / Hr	Amount
Equipment		Yards	Hours					
Cat 992K	MA1	3,021,101	2,381	\$ 341.01	41.45	1.0	\$ 382.46	\$ 910,514.37
Cat 777F Trucks	MA1		6,326	\$ 188.33	41.45	1.0	\$ 229.78	\$ 1,453,669.23
Cat D-10T Dozer	MA1		2,380.7	\$ 199.04	41.45	1.0	\$ 240.49	\$ 572,539.11
Cat 16M Blade	MA1		1,190.3	\$ 154.00	41.45	1.0	\$ 195.45	\$ 232,650.37
Water Truck	MA1		1,190.3	\$ 88.68	41.45	1.0	\$ 130.13	\$ 154,893.92
Service Truck	MA1		1,190.3	\$ 12.26	41.45	1.0	\$ 53.71	\$ 63,930.57

MA-1 Topsoil - Disturbance				Eq Rate	Operator	Duty Factor	Total / Hr	Amount
Equipment	Acres	Yards	Hours					
Cat 992K	352.1	568,053	447.6	\$ 341.01	41.45	1.0	\$ 382.46	\$ 171,202.62
Cat 777F Trucks			944.6	\$ 188.33	41.45	1.0	\$ 229.78	\$ 217,038.33
Cat D-10T Dozer			447.6	\$ 199.04	41.45	1.0	\$ 240.49	\$ 107,653.65
Cat 16M Blade - Roads			223.8	\$ 154.00	41.45	1.0	\$ 195.45	\$ 43,744.89
Water Truck			223.8	\$ 88.68	41.45	1.0	\$ 130.13	\$ 29,124.47
Service Truck			223.8	\$ 12.26	41.45	1.0	\$ 53.71	\$ 12,020.77

MA-1 Topsoil - Haulroads				Eq Rate	Operator	Duty Factor	Total / Hr	Amount
Equipment	Acres	Yards	Hours					
Cat 992K	61.5	99,220	78.2	\$ 341.01	41.45	1.0	\$ 382.46	\$ 29,903.41
Cat 777F Trucks			234.8	\$ 188.33	41.45	1.0	\$ 229.78	\$ 53,961.71
Cat D-10T Dozer			78.2	\$ 199.04	41.45	1.0	\$ 240.49	\$ 18,803.52
Cat 16M Blade - Roads			39.1	\$ 154.00	41.45	1.0	\$ 195.45	\$ 7,640.78
Water Truck			39.1	\$ 88.68	41.45	1.0	\$ 130.13	\$ 5,087.08
Service Truck			39.1	\$ 12.26	41.45	1.0	\$ 53.71	\$ 2,099.63

MA-1 Revegetation / Pond Reclamation				Eq Rate	Operator	Duty Factor	Total / Hr	Amount
Equipment	Acres	Yards	Hours					
Disturbance Area								
16M - Blade - Scarify	413.6		150.0	\$ 154.00	41.45	1.0	\$ 195.45	\$ 29,314.55
Ponds								
Cat D-11T Dozer	60.0	193,600	77.5	\$ 319.17	41.45	1.0	\$ 360.62	\$ 27,959.56

Note: Equipment Watch 1st Quarter 2024

\$ 5,329,606.56

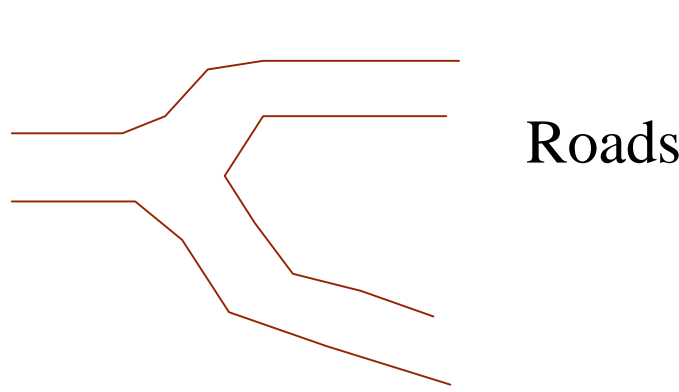
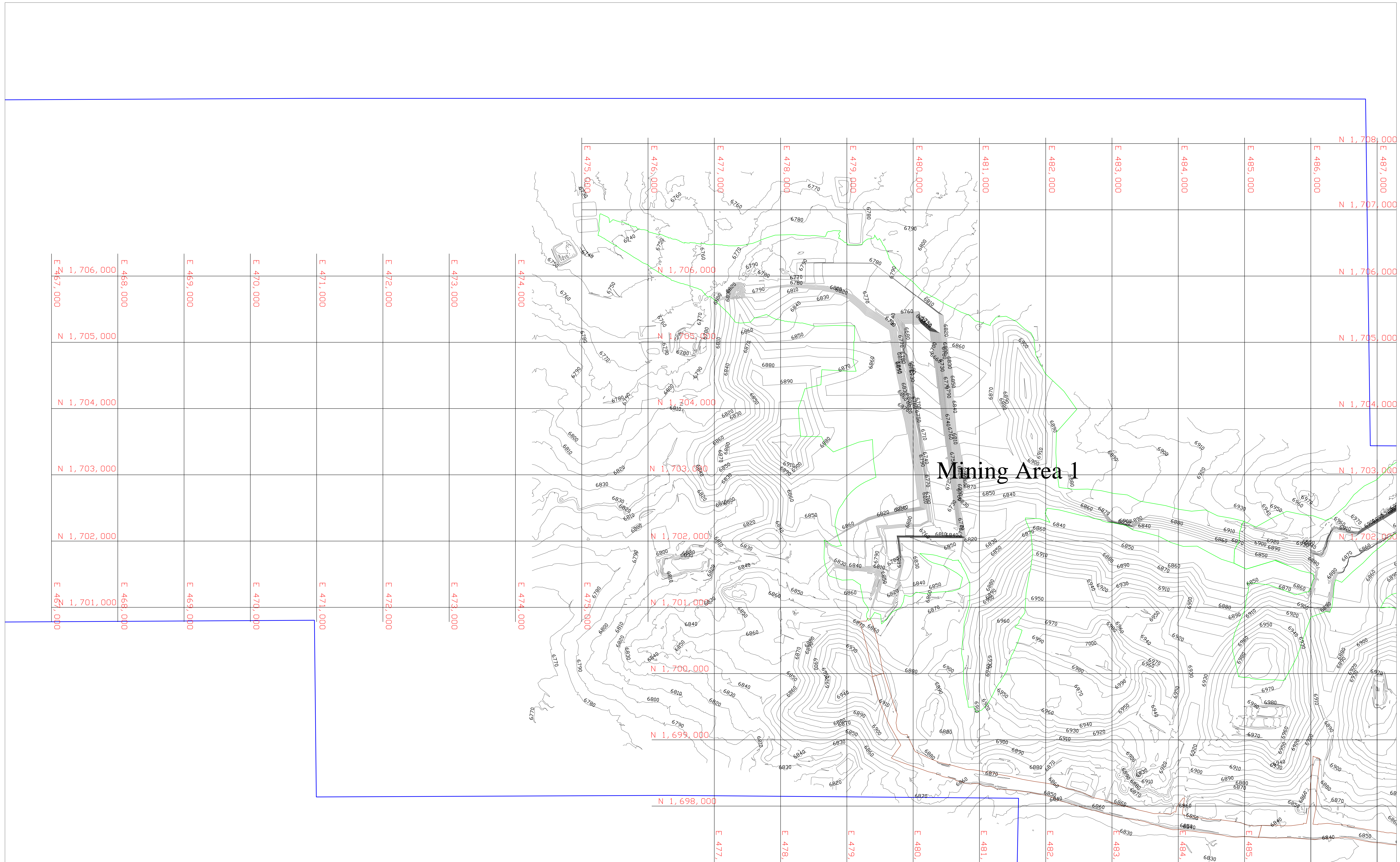
MA-1 Revegetation			Eq Rate	Operator	Duty Factor	Total / Hr	Amount
Equipment	Acres	Rate					
Seed, Mulch & Other Reveg**	473.6	\$ 1,000.00 per acre					\$ 473,600.00

\$ 473,600.00

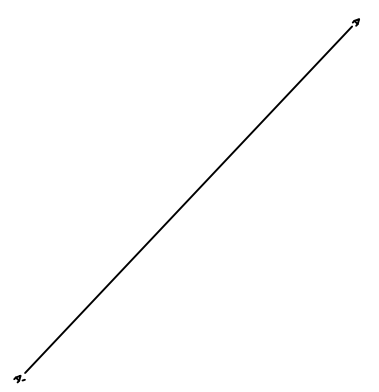
\*\*Revegetation acreage includes the previously topsoiled areas that were not disturbed during reclamation.

\$ 5,803,206.56

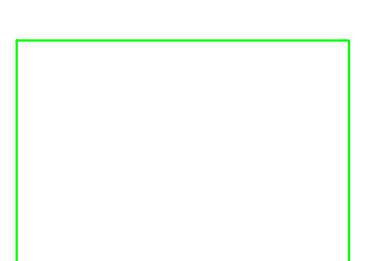
TOTAL (MA-1)



Roads



Cross Section Locations



Mining Area Boundaries

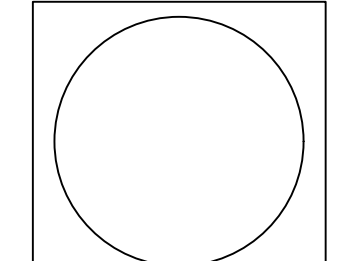
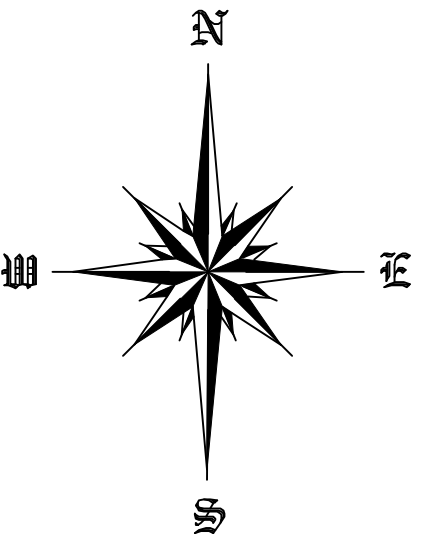
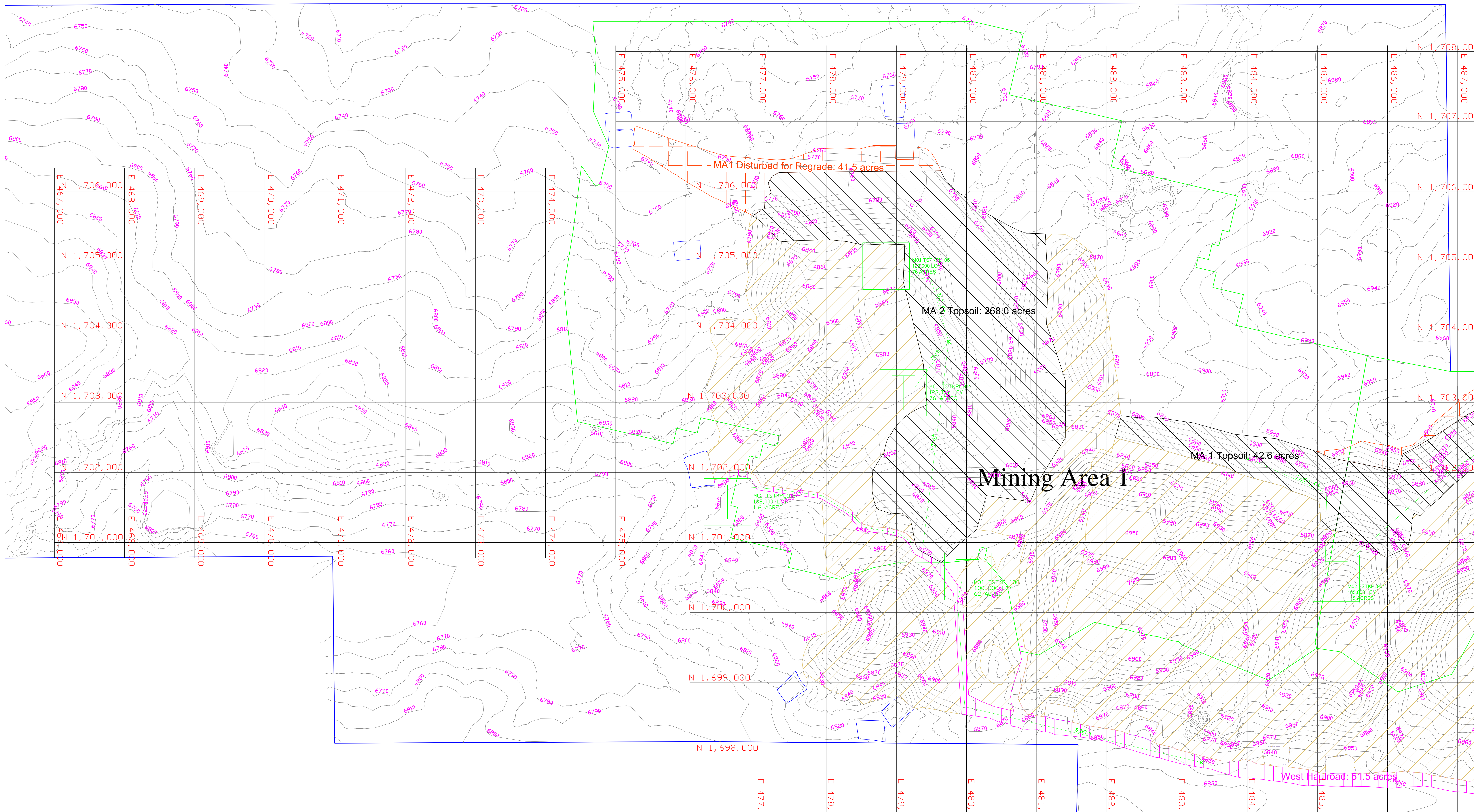


Figure 13



 <b>EL SEGUNDO MINE</b> McKinley County, New Mexico MA-1 Pre - Reclamation Surface 2022 Bond Proposal Figure 13 Permit No. 2020 -01	
DATE: 8/18/2022 SCALE: 1" = 500'	DRAWN BY: CJS CHECKED BY: CJS
<b>PEABODY NATURAL RESOURCES COMPANY</b> P.O. BOX 757 GRANTS, NM 87020	



Topsoil Haul Routes

Pond Boundary & Pond Disturbance Boundary

Topsoil Removed/Replaced for Reclamation Plan

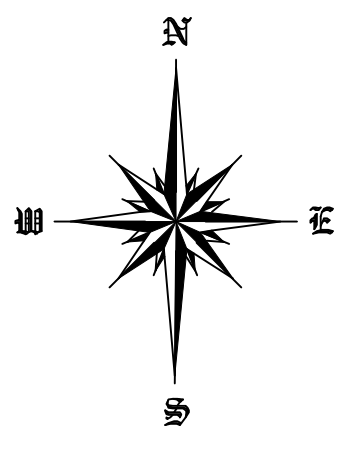
Facilities


Topsoil Stockpiles

Topsoiled by EOY 2023

Topsoil Laydown Area

Figure 14



 <b>EL SEGUNDO MINE</b> McKinley County, New Mexico	
Mining Area 1: Final Reclamation with Topsoil Areas El Segundo 2022 Bond Proposal Figure 14 Permit No. 2020-01	
DATE: 8/18/2022	DRAWN BY: CIS
SCALE: 1" = 100'	CHECKED BY: CIS
PEABODY NATURAL RESOURCES COMPANY P.O. BOX 757 GRANTS, NM 87020	

PEABODY NATURAL RESOURCES CO. / EL SEGUNDO  
MINE 2024 Bond Proposal - Current Misc Rates  
Permit Number 2020-01

MA-1

MA-1 Topsoil Haulage Locations					992 Loader	992 Loader	Total	777 Truck	#	777 Truck	777 Truck
PIT DISTURBANCE Topsoil From	Amount LCY	Area (Acres)	Average Haul Distance FT	Topsoil Hauled To	Production CY/Hr	Production Hours	992 Loader Production Hours	Cycle Time Min	Trucks Required	Operating Hours	Total Operating Hours
Disturbed for Regrade	66,953	41.5	500	MA1 Disturbed for Regrade	1,269	52.76	52.76	4.93	1.9	100.11	100.11
	0				1,269	-	52.76	-	-	-	100.11
	0				1,269	-	52.76	-	-	-	100.11
M01 TSTKPL104	122,613	76.0	793	MA 1 Topsoil (Final Pit)	1,269	96.62	149.38	5.19	2.0	192.82	292.93
M01 TSTKPL105	122,613	76.0	1,267	MA 1 Topsoil (Final Pit)	1,269	96.62	246.00	5.50	2.1	204.23	497.16
M01 TSTKPL102	187,146	116.0	5,414	MA 1 Topsoil (Final Pit)	1,269	147.48	393.48	7.89	3.0	447.41	944.57
	0				1,269	-	393.48	7.89	3.0	-	944.57
	0				1,269	-	393.48	-	-	-	944.57
M02 TSTKPL901	68,728	42.6	2,264	MA 1 Topsoil (Final Pit-East)	1,269	54.16	447.64	-	-	-	944.57
	0				1,269	-	447.64	6.11	2.3	-	944.57
	0				1,269	-	447.64	-	-	-	944.57
	0				1,269	-	447.64	-	-	-	944.57
	0				1,269	-	447.64	-	-	-	944.57
	0				1,269	-	447.64	-	-	-	944.57
<b>Sub-Totals</b>	<b>568,053</b>	<b>352.1</b>	<b>2,561</b>				<b>447.64</b>			<b>944.57</b>	
HUALROADS Topsoil From	Amount LCY	Area (Acres)	Average Haul Distance FT	Topsoil Hauled To							
MA-1 TSTKPL 100	99,220	61.5	5,267	MA-1 Haul Roads	1,269	78.19	78.19	7.81	3.0	234.85	234.85
	0				1,269	-	78.19	-	-	-	234.85
	0				1,269	-	78.19	-	-	-	234.85
	0				1,269	-	78.19	-	-	-	234.85
	0				1,269	-	78.19	-	-	-	234.85
<b>Sub-Totals</b>	<b>99,220</b>	<b>61.5</b>	<b>5,267</b>				<b>78.19</b>			<b>234.85</b>	
<b>Totals</b>	<b>667,273</b>	<b>413.6</b>					<b>525.8</b>			<b>1,179.4</b>	

Note: Topsoil Stockpiles will be regraded and revegetated as necessary.

Reveg. Only Acres:   \*\* PREVIOUS TOPSOILED NON-REVEGETATED AREAS.

SECTION VI  
MA - 2

MA-2 Dozer Ripping				Eq Rate	Operator	Duty Factor	Total / Hr	Amount
Equipment		Yards	Hours					
Cat D-10T	MA2	5,302,182	3,946.0	\$ 199.04	41.45	1.0	\$ 240.49	\$ 948,983.30

MA-2 Dozer Push				Eq Rate	Operator	Duty Factor	Total / Hr	Amount
Equipment		Yards	Hours					
Cat D-11T Highwall	MA2	4,146,765	2,661	\$ 319.17	41.45	1.0	\$ 360.62	\$ 959,567.79
Cat D-11T Spoil	MA2	954,337	525	\$ 319.17	41.45	1.0	\$ 360.62	\$ 189,496.22

MA-2 Truck Shovel Haul				Eq Rate	Operator	Duty Factor	Total / Hr	Amount
Equipment		Yards	Hours					
Cat 992K	MA2	2,774,515	2,186	\$ 341.01	41.45	1.0	\$ 382.46	\$ 836,197.06
Cat 777F Trucks	MA2		5,506	\$ 188.33	41.45	1.0	\$ 229.78	\$ 1,265,191.35
Cat D-10T Dozer	MA2		2,186.4	\$ 199.04	41.45	1.0	\$ 240.49	\$ 525,807.76
Cat 16M Blade	MA2		1,093.2	\$ 154.00	41.45	1.0	\$ 195.45	\$ 213,661.16
Water Truck	MA2		1,093.2	\$ 88.68	41.45	1.0	\$ 130.13	\$ 142,251.29
Service Truck	MA2		1,093.2	\$ 12.26	41.45	1.0	\$ 53.71	\$ 58,712.48

MA-2 Topsoil - Disturbance				Eq Rate	Operator	Duty Factor	Total / Hr	Amount
Equipment	Acres	Yards	Hours					
Cat 992K	251.2	405,269	319.4	\$ 341.01	41.45	1.0	\$ 382.46	\$ 122,141.98
Cat 777F Trucks			755.6	\$ 188.33	41.45	1.0	\$ 229.78	\$ 173,613.15
Cat D-10T Dozer			319.4	\$ 199.04	41.45	1.0	\$ 240.49	\$ 76,803.90
Cat 16M Blade - Roads			159.7	\$ 154.00	41.45	1.0	\$ 195.45	\$ 31,209.15
Water Truck			159.7	\$ 88.68	41.45	1.0	\$ 130.13	\$ 20,778.42
Service Truck			159.7	\$ 12.26	41.45	1.0	\$ 53.71	\$ 8,576.04

MA-2 Topsoil - Haulroads				Eq Rate	Operator	Duty Factor	Total / Hr	Amount
Equipment	Acres	Yards	Hours					
Cat 992K	0.0	0	0.0	\$ 341.01	41.45	1.0	\$ 382.46	\$ -
Cat 777F Trucks			0.0	\$ 188.33	41.45	1.0	\$ 229.78	\$ -
Cat D-10T Dozer			0.0	\$ 199.04	41.45	1.0	\$ 240.49	\$ -
Cat 16M Blade - Roads			0.0	\$ 154.00	41.45	1.0	\$ 195.45	\$ -
Water Truck			0.0	\$ 88.68	41.45	1.0	\$ 130.13	\$ -
Service Truck			0.0	\$ 12.26	41.45	1.0	\$ 53.71	\$ -

MA-2 Revegetation / Pond Reclamation				Eq Rate	Operator	Duty Factor	Total / Hr	Amount
Equipment	Acres	Yards	Hours					
Disturbance Area								
16M - Blade - Scarify	251.2		91.1	\$ 154.00	41.45	1.0	\$ 195.45	\$ 17,804.19
Ponds								
Cat D-11T Dozer	45.0	145,200	58.1	\$ 319.17	41.45	1.0	\$ 360.62	\$ 20,969.67

Note: Equipment Watch 1st Quarter 2024

\$ 5,611,764.91

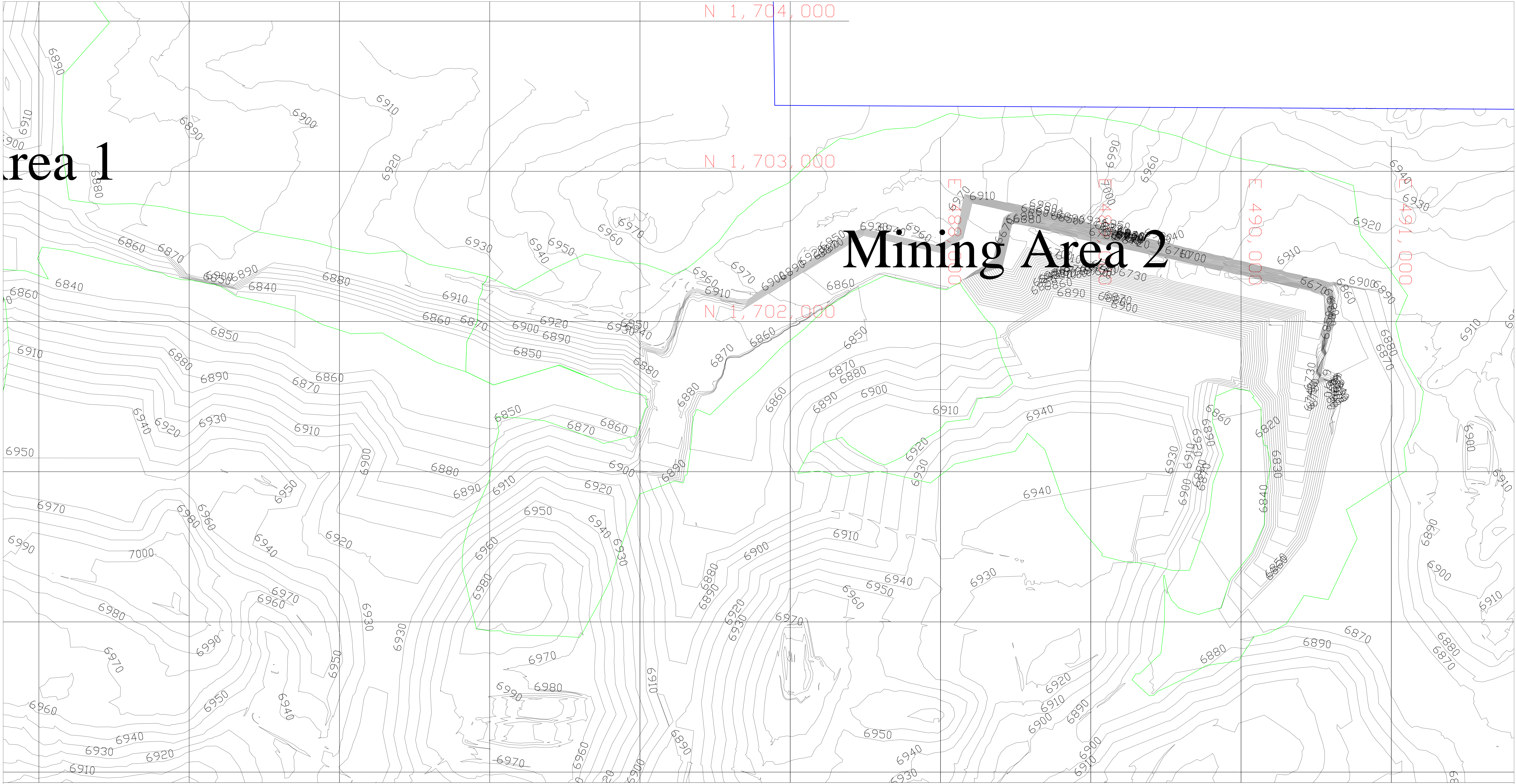
MA-2 Revegetation			Eq Rate	Operator	Duty Factor	Total / Hr	Amount
Equipment	Acres	Rate					
Seed, Mulch & Other Reveg**	296.2	\$ 1,000.00 per acre					\$ 296,200.00

\$ 296,200.00

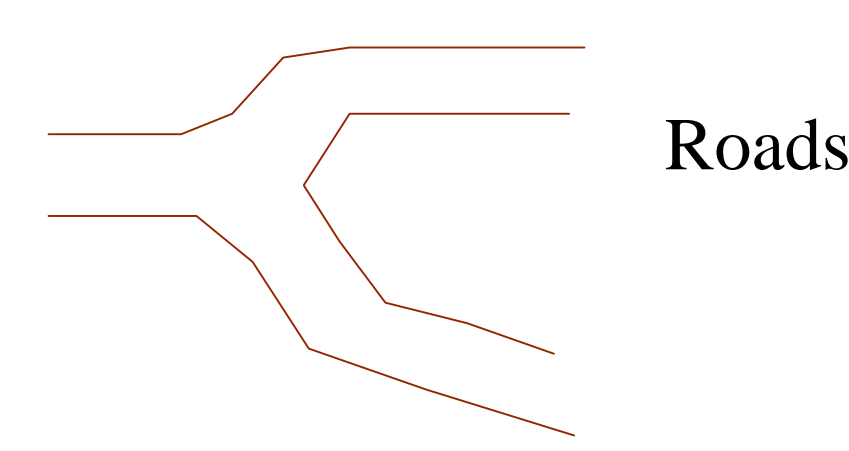
\*\*Revegetation acreage includes the previously topsoiled areas that were not disturbed during reclamation.

\$ 5,907,964.91

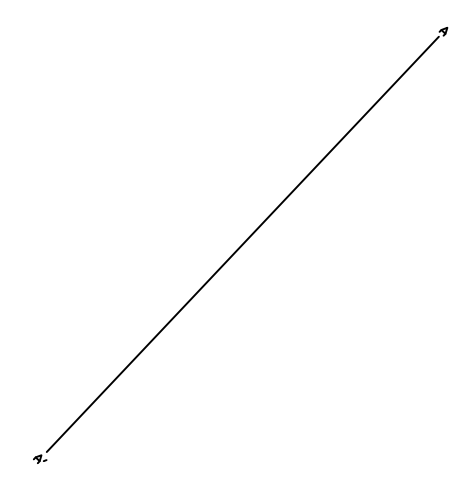
TOTAL (MA-2)



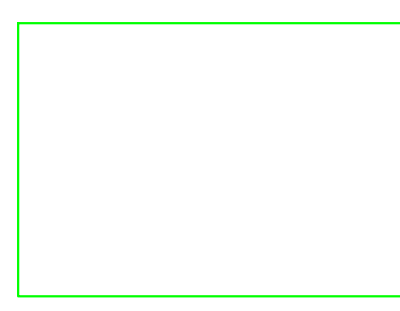
# Mining Area 2



Roads



Cross Section Locations



Mining Area Boundaries

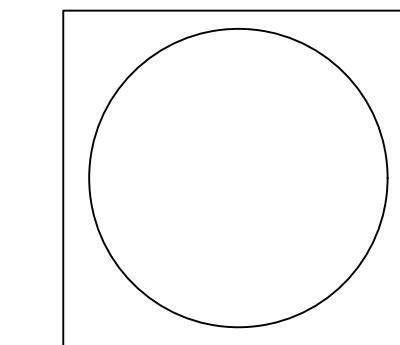
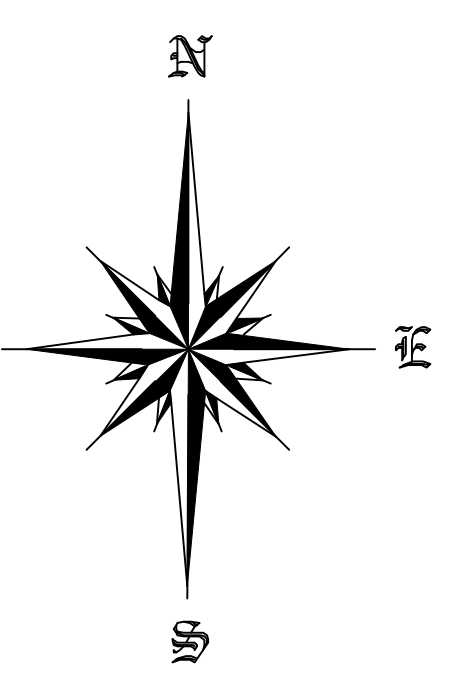
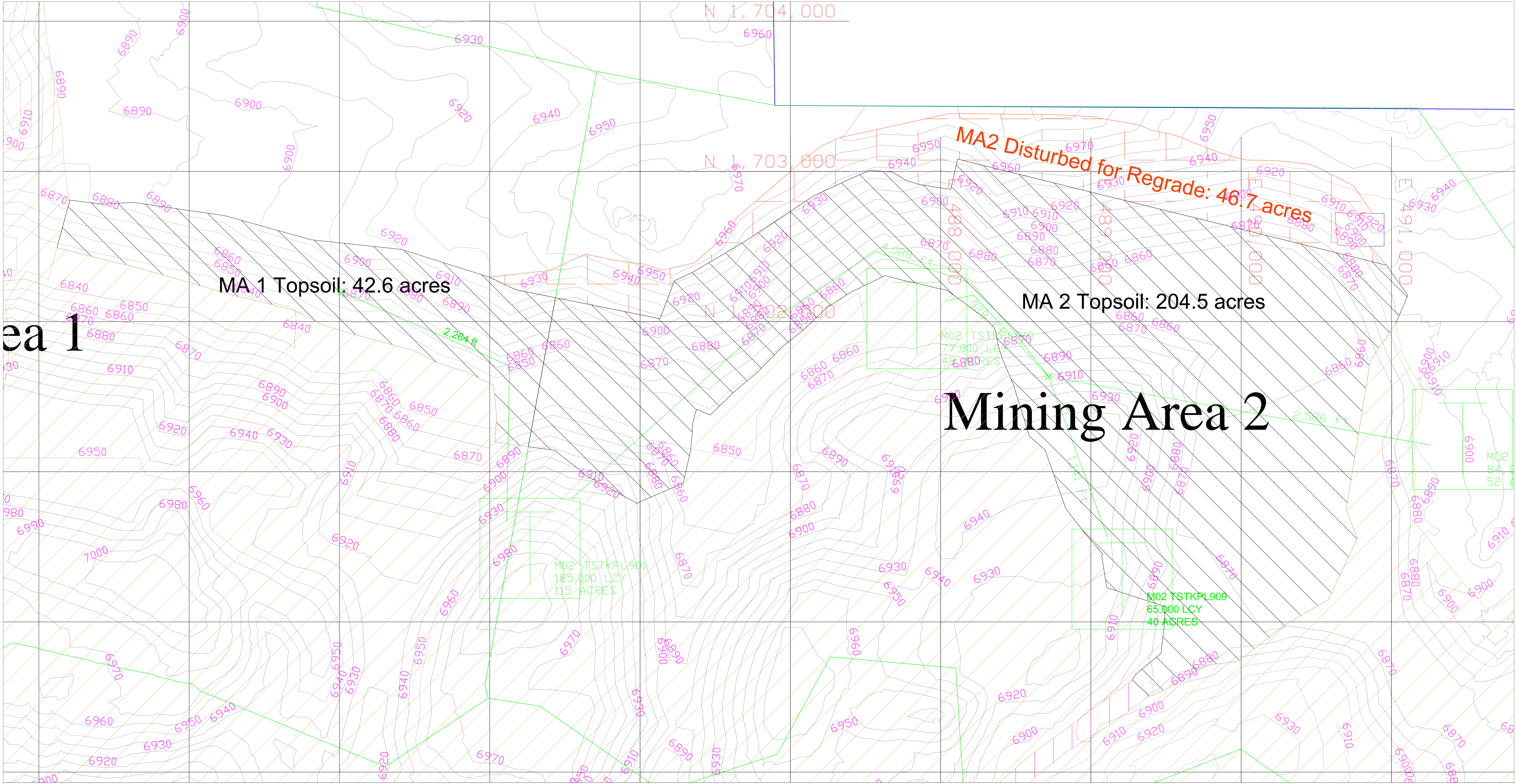


Figure 15



 <b>EL SEGUNDO MINE</b> McKinley County, New Mexico MA-2 Pre - Reclamation Surface 2022 Bond Proposal Figure 15 Permit No. 2020 -01	
DATE: 8/18/2022 SCALE: 1" = 200'	DRAWN BY: CJS CHECKED BY: CJS
<b>PEABODY NATURAL RESOURCES COMPANY</b> P.O. BOX 757 GRANTS, NM 87020	



Area 1

MA 1 Topsoil: 42.6 acres

MA2 Disturbed for Regrade: 46.7 acres

MA 2 Topsoil: 204.5 acres

# Mining Area 2

M02 TSTKPL901  
185,000 LCY  
115 ACRES

M02 TSTKPL902  
77,000 LCY  
48.8 ACRES

M02 TSTKPL909  
65,000 LCY  
40 ACRES

Topsoil Haul Routes

Pond Boundary & Pond Disturbance Boundary

Topsoil Removed/Replaced for Reclamation Plan

Facilities

Topsoil Stockpiles

Topsoiled by EOY 2023

Topsoil Laydown Area

Figure 16



<b>EL SEGUNDO MINE</b> McKinley County, New Mexico	
Mining Area 2: Final Reclamation with Topsoil Areas El Segundo 2022 Bond Proposal Figure 16 Permit No. 2020-01	
DATE: 8/18/2022 SCALE: 1" = 100'	DRAWN BY: CIS CHECKED BY: CIS
<b>PEABODY NATURAL RESOURCES COMPANY</b> P.O. BOX 757 GRANTS, NM 87020	





SECTION VII  
MA - 3

MA-3 Dozer Ripping				Eq Rate	Operator	Duty Factor	Total / Hr	Amount
Equipment		Yards	Hours					
Cat D-10T	MA3	1,772,631	1,319.2	\$ 199.04	41.45	1.0	\$ 240.49	\$ 317,265.14

MA-3 Dozer Push				Eq Rate	Operator	Duty Factor	Total / Hr	Amount
Equipment		Yards	Hours					
Cat D-11T Highwall	MA3	1,328,735	1,051	\$ 319.17	41.45	1.0	\$ 360.62	\$ 378,937.94
Cat D-11T Spoil	MA3	445,937	285	\$ 319.17	41.45	1.0	\$ 360.62	\$ 102,941.02

MA-3 Truck Shovel Haul				Eq Rate	Operator	Duty Factor	Total / Hr	Amount
Equipment		Yards	Hours					
Cat 992K	MA3	887,054	699	\$ 341.01	41.45	1.0	\$ 382.46	\$ 267,344.72
Cat 777F Trucks	MA3		1,461	\$ 188.33	41.45	1.0	\$ 229.78	\$ 335,615.72
Cat D-10T Dozer	MA3		699.0	\$ 199.04	41.45	1.0	\$ 240.49	\$ 168,108.62
Cat 16M Blade	MA3		349.5	\$ 154.00	41.45	1.0	\$ 195.45	\$ 68,310.67
Water Truck	MA3		349.5	\$ 88.68	41.45	1.0	\$ 130.13	\$ 45,479.87
Service Truck	MA3		349.5	\$ 12.26	41.45	1.0	\$ 53.71	\$ 18,771.26

MA-3 Topsoil - Disturbance				Eq Rate	Operator	Duty Factor	Total / Hr	Amount
Equipment	Acres	Yards	Hours					
Cat 992K	133.9	216,025	170	\$ 341.01	41.45	1.0	\$ 382.46	\$ 65,106.68
Cat 777F Trucks			469.9	\$ 188.33	41.45	1.0	\$ 229.78	\$ 107,976.37
Cat D-10T Dozer			170.2	\$ 199.04	41.45	1.0	\$ 240.49	\$ 40,939.63
Cat 16M Blade - Roads			85.1	\$ 154.00	41.45	1.0	\$ 195.45	\$ 16,635.75
Water Truck			85.1	\$ 88.68	41.45	1.0	\$ 130.13	\$ 11,075.75
Service Truck			85.1	\$ 12.26	41.45	1.0	\$ 53.71	\$ 4,571.38

MA-3 Topsoil - Haulroads				Eq Rate	Operator	Duty Factor	Total / Hr	Amount
Equipment	Acres	Yards	Hours					
Cat 992K	143.2	231,029	182.1	\$ 341.01	41.45	1.0	\$ 382.46	\$ 69,628.66
Cat 777F Trucks			482.2	\$ 188.33	41.45	1.0	\$ 229.78	\$ 110,801.92
Cat D-10T Dozer			182.1	\$ 199.04	41.45	1.0	\$ 240.49	\$ 43,783.09
Cat 16M Blade - Roads			91.0	\$ 154.00	41.45	1.0	\$ 195.45	\$ 17,791.19
Water Truck			91.0	\$ 88.68	41.45	1.0	\$ 130.13	\$ 11,845.02
Service Truck			91.0	\$ 12.26	41.45	1.0	\$ 53.71	\$ 4,888.88

MA-3 Revegetation / Pond Reclamation				Eq Rate	Operator	Duty Factor	Total / Hr	Amount
Equipment	Acres	Yards	Hours					
<i>Disturbance Area</i>								
16M - Blade - Scarify	277.1		100.5	\$ 154.00	41.45	1.0	\$ 195.45	\$ 19,639.90
<i>Ponds</i>								
Cat D-11T Dozer	95.0	306,533	122.8	\$ 319.17	41.45	1.0	\$ 360.62	\$ 44,269.30

Note: Equipment Watch 1st Quarter 2024

\$ 2,271,728.48

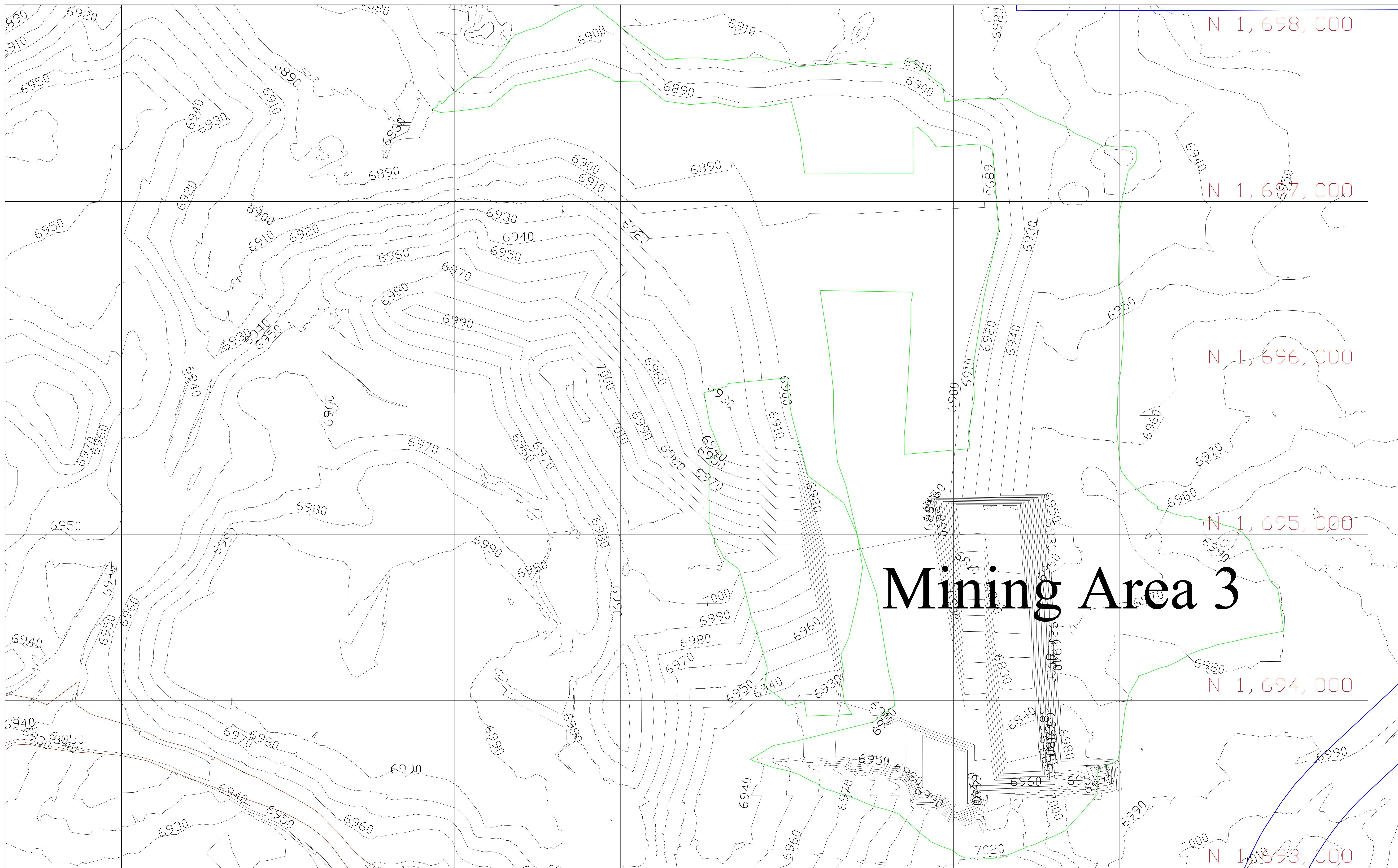
MA-3 Revegetation			Eq Rate	Operator	Duty Factor	Total / Hr	Amount
Equipment	Acres	Rate					
Seed, Mulch & Other Reveg**	372.1	\$ 1,000.00 per acre					\$ 372,100.00

\$ 372,100.00

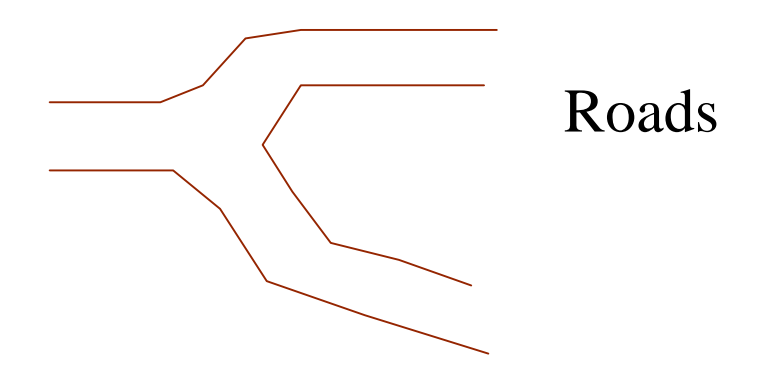
\*\*Revegetation acreage includes the previously topsoiled areas that were not disturbed during reclamation.

\$ 2,643,828.48

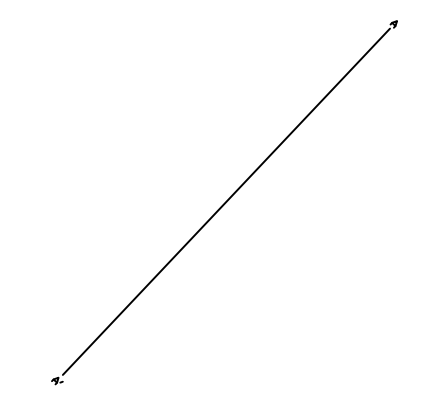
TOTAL (MA-3)



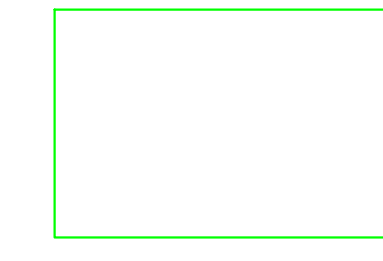
# Mining Area 3



Roads



Cross Section Locations



Mining Area Boundaries

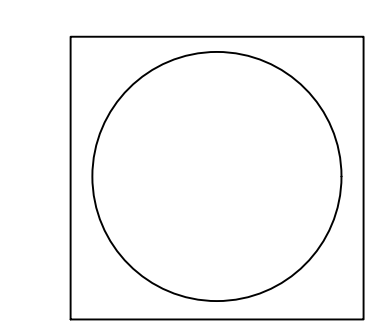
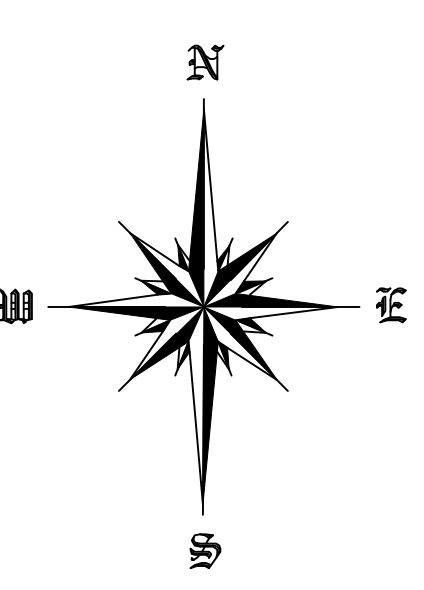
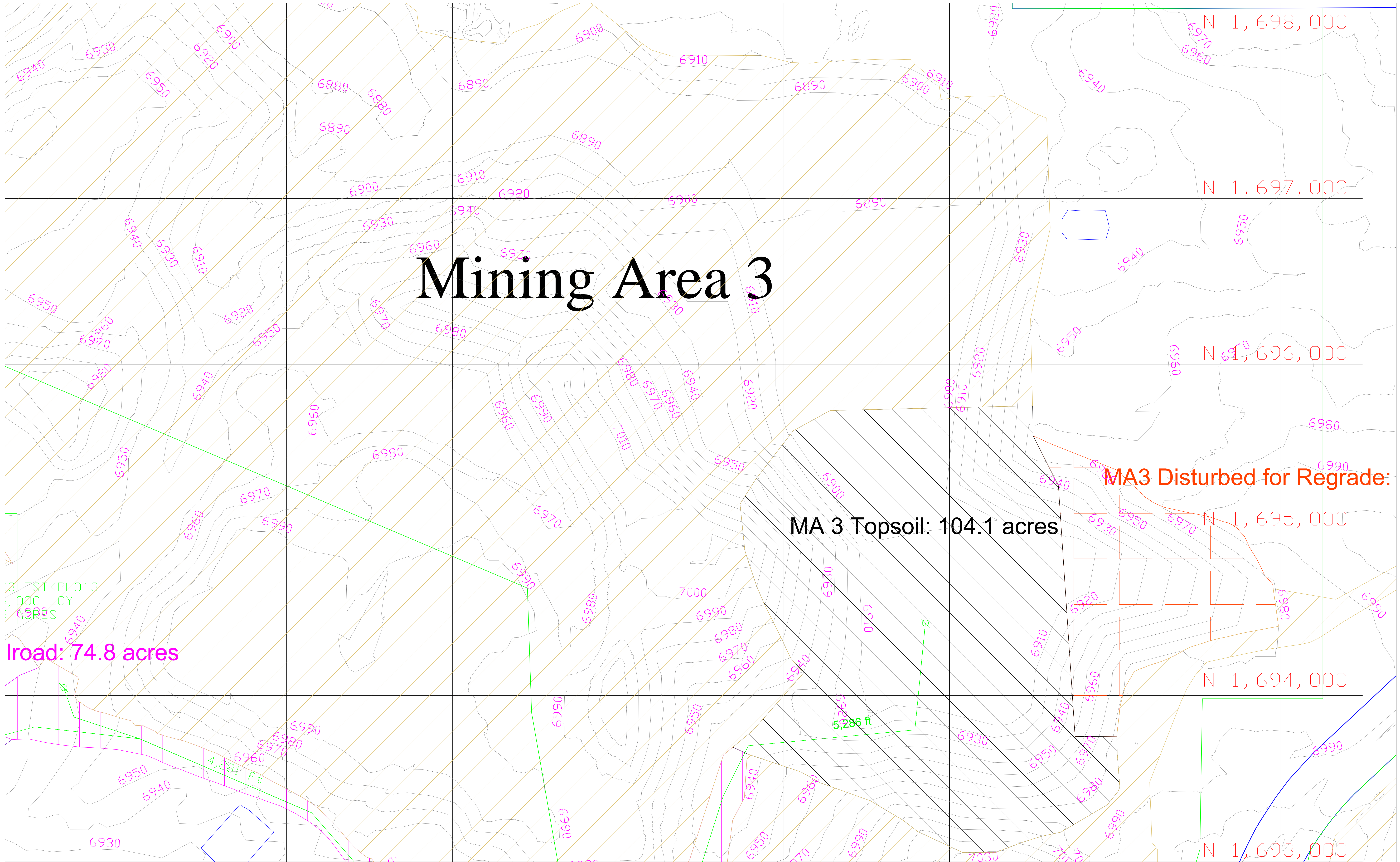


Figure 17



 <b>EL SEGUNDO MINE</b> McKinley County, New Mexico MA-3 Pre-Reclamation Surface 2022 Bond Proposal Figure 17 Permit No. 2020 -01	
DATE: 8/18/2022 SCALE: 1" = 200'	DRAWN BY: CJS CHECKED BY: CJS
<b>PEABODY NATURAL RESOURCES COMPANY</b> P.O. BOX 757 GRANTS, NM 87020	



# Mining Area 3

MA 3 Topsoil: 104.1 acres

Road: 74.8 acres

MA3 Disturbed for Regrade:

Topsoil Haul Routes

Pond Boundary & Pond Disturbance Boundary

Topsoil Removed/Replaced for Reclamation Plan

Facilities

Topsoil Stockpiles

Topsoiled by EOY 2023

Topsoil Laydown Area

Figure 18



EL SEGUNDO MINE McKinley County, New Mexico Mining Area 3: Final Reclamation with Topsoil Areas El Segundo 2022 Bond Proposal Figure 18 Permit No. 2020-01	
DATE: 8/18/2022 SCALE: 1" = 1000'	DRAWN BY: CIS CHECKED BY: CIS
PEABODY NATURAL RESOURCES COMPANY P.O. BOX 757 GRANTS, NM 87020	



SECTION VIII  
MA - 4

MA-4 Dozer Ripping				Eq Rate	Operator	Duty Factor	Total / Hr	Amount
Equipment		Yards	Hours					
Cat D-10T	MA4	8,348,581	6,213.2	\$ 199.04	41.45	1.0	\$ 240.49	\$ 1,494,227.16

MA-4 Dozer Push				Eq Rate	Operator	Duty Factor	Total / Hr	Amount
Equipment		Yards	Hours					
Cat D-11T Highwall	MA4	9,136,928	7,205	\$ 319.17	41.45	1.0	\$ 360.62	\$ 2,598,143.79
Cat D-11T Spoil	MA4	3,933,210	2,059	\$ 319.17	41.45	1.0	\$ 360.62	\$ 742,640.52

MA-4 Truck Shovel Haul				Eq Rate	Operator	Duty Factor	Total / Hr	Amount
Equipment		Yards	Hours					
Cat 992K	MA4	2,007,926	1,582	\$ 341.01	41.45	1.0	\$ 382.46	\$ 605,158.67
Cat 777F Trucks	MA4		3,480	\$ 188.33	41.45	1.0	\$ 229.78	\$ 799,611.79
Cat D-10T Dozer	MA4		1,582.3	\$ 199.04	41.45	1.0	\$ 240.49	\$ 380,528.88
Cat 16M Blade	MA4		791.1	\$ 154.00	41.45	1.0	\$ 195.45	\$ 154,627.31
Water Truck	MA4		791.1	\$ 88.68	41.45	1.0	\$ 130.13	\$ 102,947.74
Service Truck	MA4		791.1	\$ 12.26	41.45	1.0	\$ 53.71	\$ 42,490.42

MA-4 Topsoil - Disturbance				Eq Rate	Operator	Duty Factor	Total / Hr	Amount
Equipment	Acres	Yards	Hours					
Cat 992K	477.3	770,044	606.8	\$ 341.01	41.45	1.0	\$ 382.46	\$ 232,079.67
Cat 777F Trucks			1,420.9	\$ 188.33	41.45	1.0	\$ 229.78	\$ 326,490.94
Cat D-10T Dozer			606.8	\$ 199.04	41.45	1.0	\$ 240.49	\$ 145,933.65
Cat 16M Blade - Roads			303.4	\$ 154.00	41.45	1.0	\$ 195.45	\$ 59,299.91
Water Truck			303.4	\$ 88.68	41.45	1.0	\$ 130.13	\$ 39,480.68
Service Truck			303.4	\$ 12.26	41.45	1.0	\$ 53.71	\$ 16,295.17

MA-4 Topsoil - Haulroads				Eq Rate	Operator	Duty Factor	Total / Hr	Amount
Equipment	Acres	Yards	Hours					
Cat 992K	142.8	230,385	156.9	\$ 341.01	41.45	1.0	\$ 382.46	\$ 60,001.52
Cat 777F Trucks			423.0	\$ 188.33	41.45	1.0	\$ 229.78	\$ 97,200.07
Cat D-10T Dozer			156.9	\$ 199.04	41.45	1.0	\$ 240.49	\$ 37,729.46
Cat 16M Blade - Roads			78.4	\$ 154.00	41.45	1.0	\$ 195.45	\$ 15,331.31
Water Truck			78.4	\$ 88.68	41.45	1.0	\$ 130.13	\$ 10,207.28
Service Truck			78.4	\$ 12.26	41.45	1.0	\$ 53.71	\$ 4,212.93

MA-4 Revegetation / Pond Reclamation				Eq Rate	Operator	Duty Factor	Total / Hr	Amount
Equipment	Acres	Yards	Hours					
Disturbance Area 16M - Blade - Scarify	620.1		224.9	\$ 154.00	41.45	1.0	\$ 195.45	\$ 43,950.56
Ponds Cat D-11T Dozer	55.0	177,467	71.1	\$ 319.17	41.45	1.0	\$ 360.62	\$ 25,629.59

Note: Equipment Watch 1st Quarter 2024

\$ 8,034,219.02

MA-4 Revegetation			Eq Rate	Operator	Duty Factor	Total / Hr	Amount
Equipment	Acres	Rate					
Seed, Mulch & Other Reveg**	675.1	\$ 1,000.00 per acre					\$ 675,100.00

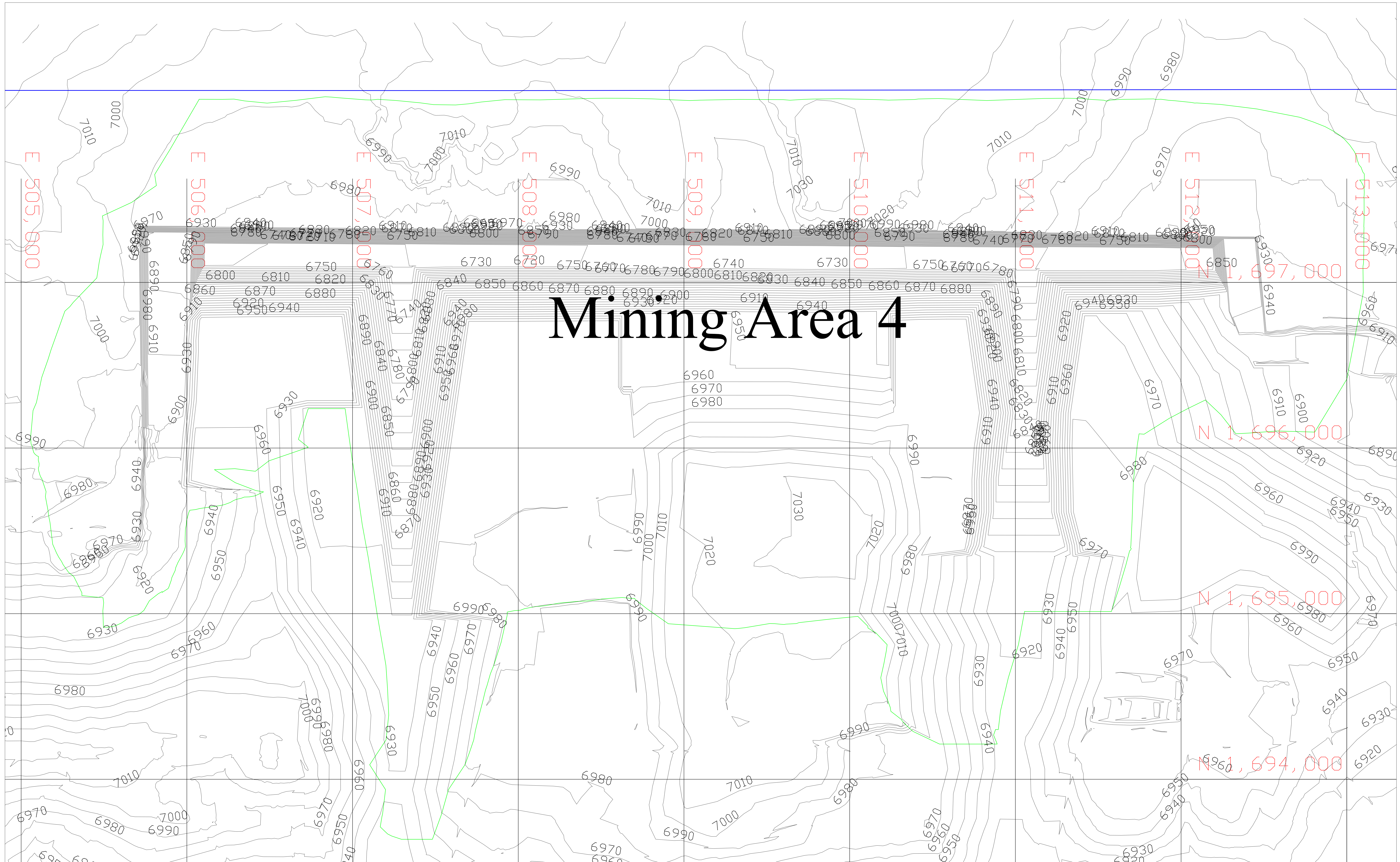
\$ 675,100.00

\*\*Revegetation acreage includes the previously topsoiled areas that were not disturbed during reclamation.

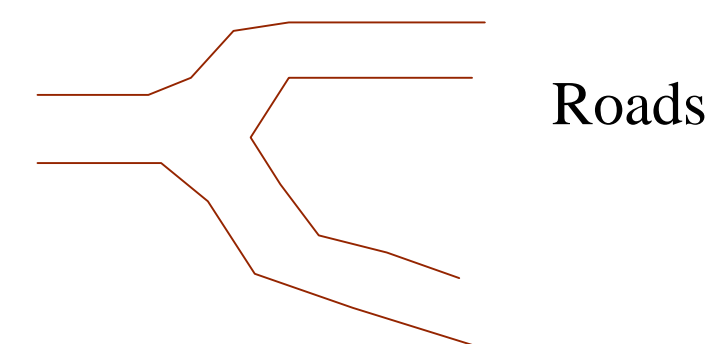
\$ 8,709,319.02

TOTAL (MA-4)

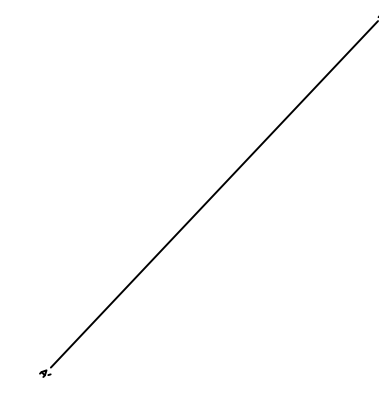




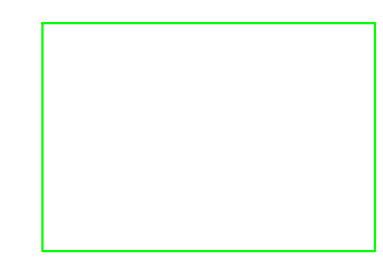
# Mining Area 4



Roads



Cross Section Locations



Mining Area Boundaries

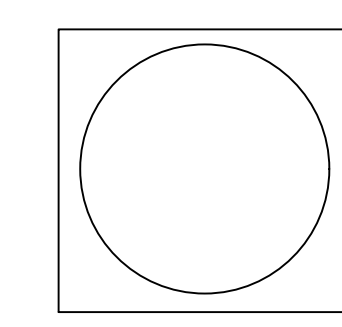
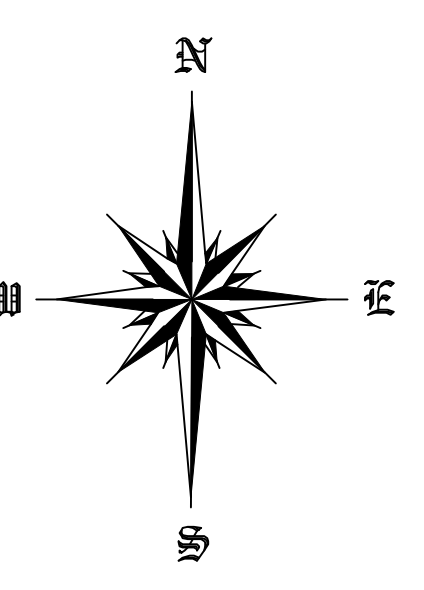


Figure 19



 <b>EL SEGUNDO MINE</b> McKinley County, New Mexico MA-4 Pre-Reclamation Surface 2022 Bond Proposal Figure 19 Permit No. 2020 -01	
DATE: 8/18/2022 SCALE: 1" = 200'	DRAWN BY: CJS CHECKED BY: CJS
<b>PEABODY NATURAL RESOURCES COMPANY</b> P.O. BOX 757 GRANTS, NM 87020	