

State of New Mexico
Energy, Minerals and Natural Resources Department

Michelle Lujan Grisham
Governor

Melanie A. Kenderdine
Cabinet Secretary-Designate

Benjamin Shelton
Acting Deputy Cabinet Secretary

Albert Chang, Director
Mining and Minerals Division



January 27, 2025

Governor Max Zuni
P.O. Box 1270
Isleta Pueblo, NM 87022

RE: Request for Comments and Offer to Consult on on Modification 24-1 Harding Mine; Swani LLC., Permit No. SI025MN

Dear Governor Zuni,

The Mining and Minerals Division (MMD) of the New Mexico Energy, Minerals, and Natural Resources Department has received an application from Sawni LLC. requesting a modification to the shaft closure and final release of the Harding Mine Permit (SI025MN) located Sierra County under 19.10.12.1210 NMAC of the New Mexico Mining Act (NMSA 1978, §69-36-1 et seq.).

The Harding Mine has already PUF plugged the shaft and removed the building from the site. The previous closure plan included tearing out the cement pad, however; the BLM has agreed to leaving this pad in place for closure. This site is located on BLM lands in the Caballo Mountains with-in Sierra County, New Mexico.

This notification of application is being submitted to you pursuant to the State Tribal Collaboration Act. MMD is requesting comments from you on any traditional, cultural and or religious properties that you would like MMD to take into consideration and is offering to consult with you on the application. Please see the attached map of the project vicinity. The application can be viewed in its entirety by visiting the MMD web site at;

[Harding Mine SI025MN - https://www.emnrd.nm.gov/mmd/harding-mine-si025mn/?et_fb=1&PageSpeed=off](https://www.emnrd.nm.gov/mmd/harding-mine-si025mn/?et_fb=1&PageSpeed=off) [Mining and Minerals](#)

Please provide any comments or request a formal consultation by March 1, 2025 If you wish to consult on this application or have any questions, please contact me at (505) 216-8945, or email samantha.rynas@emnrd.nm.gov.

Sincerely,

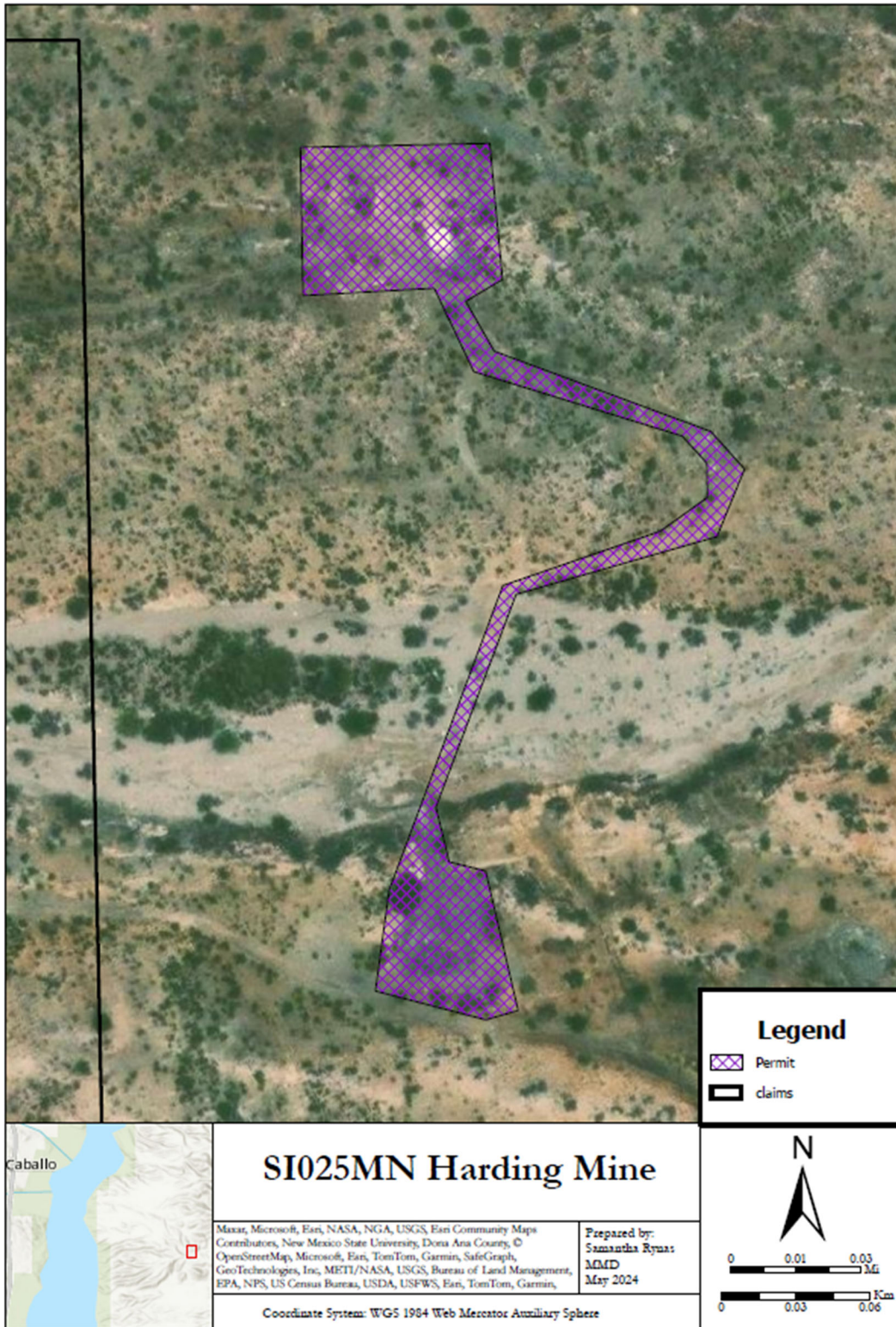
Samantha Rynas, Permit Lead
Mining Act Reclamation Program (MARF)
Mining and Minerals Division

CC: DJ Ennis, Program Manager, MARF/MMD
Clint Chisler, Reclamation Specialist Supervisor, MARF/MMD
Mine File (SI025MN)

RE: Request for Review and Comment on the Draft Baseline Data Report; La Jara Mesa Mine, Laramide Resources (USA) Inc., Permit No. CI008RN

September 19, 2024

Page 2



State of New Mexico
Energy, Minerals and Natural Resources Department

Michelle Lujan Grisham
Governor

Melanie A. Kenderdine
Cabinet Secretary-Designate

Benjamin Shelton
Acting Deputy Cabinet Secretary

Albert Chang, Director
Mining and Minerals Division



January 27, 2025

THPO Henry Walt
P.O. Box 1270
Isleta Pueblo, NM 87022

RE: Request for Comments and Offer to Consult on on Modification 24-1 Harding Mine; Swani LLC., Permit No. SI025MN

Dear THPO Walt,

The Mining and Minerals Division (MMD) of the New Mexico Energy, Minerals, and Natural Resources Department has received an application from Sawni LLC. requesting a modification to the shaft closure and final release of the Harding Mine Permit (SI025MN) located Sierra County under 19.10.12.1210 NMAC of the New Mexico Mining Act (NMSA 1978, §69-36-1 et seq.).

The Harding Mine has already PUF plugged the shaft and removed the building from the site. The previous closure plan included tearing out the cement pad, however; the BLM has agreed to leaving this pad in place for closure. This site is located on BLM lands in the Caballo Mountains with-in Sierra County, New Mexico.

This notification of application is being submitted to you pursuant to the State Tribal Collaboration Act. MMD is requesting comments from you on any traditional, cultural and or religious properties that you would like MMD to take into consideration and is offering to consult with you on the application. Please see the attached map of the project vicinity. The application can be viewed in its entirety by visiting the MMD web site at;

[Harding Mine SI025MN - https://www.emnrd.nm.gov/mmd/harding-mine-si025mn/?et_fb=1&PageSpeed=off](https://www.emnrd.nm.gov/mmd/harding-mine-si025mn/?et_fb=1&PageSpeed=off) Mining and Minerals

Please provide any comments or request a formal consultation by March 1, 2025 If you wish to consult on this application or have any questions, please contact me at (505) 216-8945, or email samantha.rynas@emnrd.nm.gov.

Sincerely,

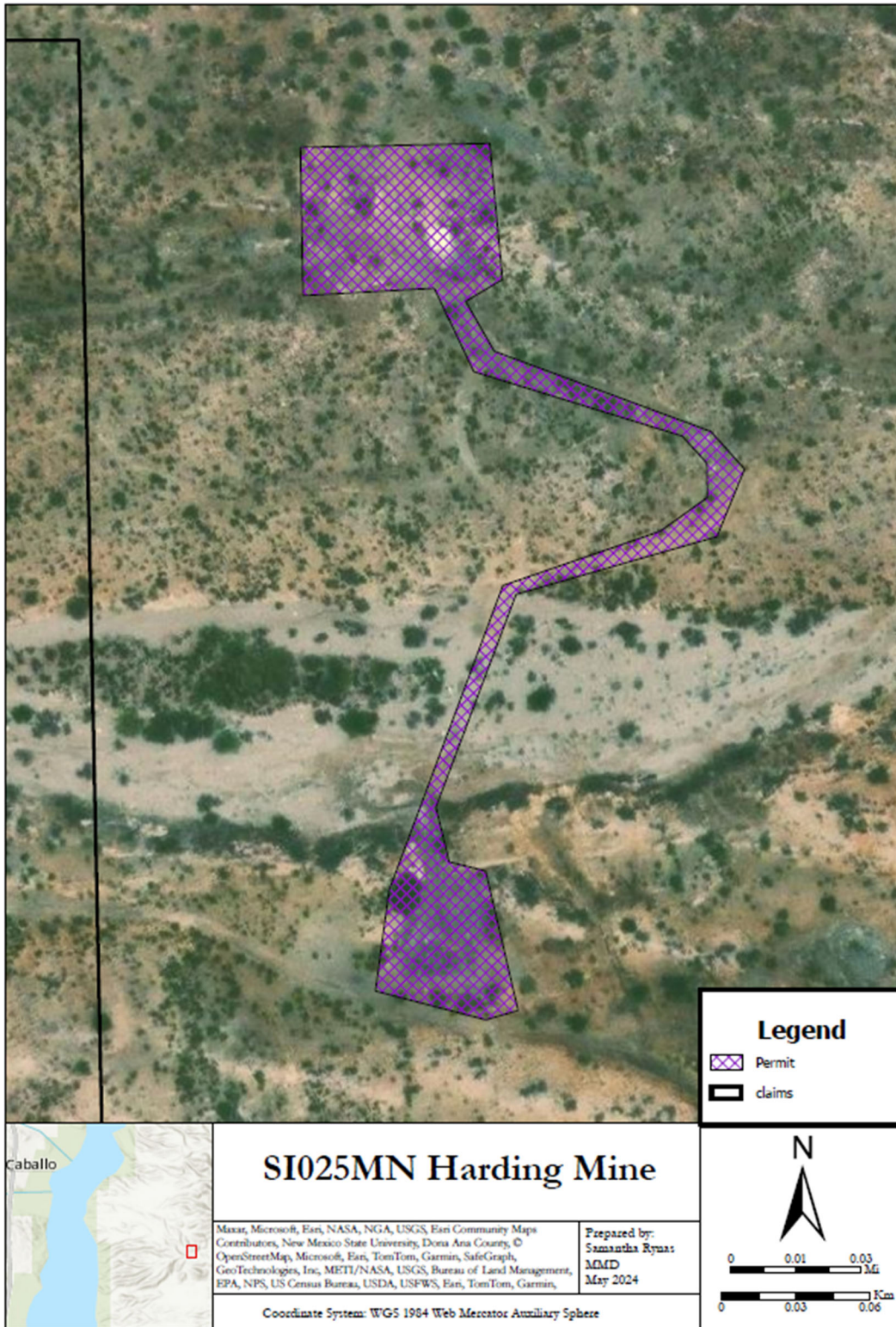
Samantha Rynas, Permit Lead
Mining Act Reclamation Program (MARP)
Mining and Minerals Division

CC: DJ Ennis, Program Manager, MARP/MMD
Clint Chisler, Reclamation Specialist Supervisor, MARP/MMD
Mine File (SI025MN)

RE: Request for Review and Comment on the Draft Baseline Data Report; La Jara Mesa Mine, Laramide Resources (USA) Inc., Permit No. CI008RN

September 19, 2024

Page 2



State of New Mexico
Energy, Minerals and Natural Resources Department

Michelle Lujan Grisham
Governor

Melanie A. Kenderdine
Cabinet Secretary-Designate

Benjamin Shelton
Acting Deputy Cabinet Secretary

Albert Chang, Director
Mining and Minerals Division



January 27, 2025

Governor E. Michael Silvas
117 S. Old Pueblo Road
P.O. Box 17579
El Paso, TX 79907

RE: Request for Comments and Offer to Consult on on Modification 24-1 Harding Mine; Swani LLC., Permit No. SI025MN

Dear Governor Silvas,

The Mining and Minerals Division (MMD) of the New Mexico Energy, Minerals, and Natural Resources Department has received an application from Sawni LLC. requesting a modification to the shaft closure and final release of the Harding Mine Permit (SI025MN) located Sierra County under 19.10.12.1210 NMAC of the New Mexico Mining Act (NMSA 1978, §69-36-1 et seq.).

The Harding Mine has already PUF plugged the shaft and removed the building from the site. The previous closure plan included tearing out the cement pad, however; the BLM has agreed to leaving this pad in place for closure. This site is located on BLM lands in the Caballo Mountains with-in Sierra County, New Mexico.

This notification of application is being submitted to you pursuant to the State Tribal Collaboration Act. MMD is requesting comments from you on any traditional, cultural and or religious properties that you would like MMD to take into consideration and is offering to consult with you on the application. Please see the attached map of the project vicinity. The application can be viewed in its entirety by visiting the MMD web site at;

[Harding Mine SI025MN - https://www.emnrd.nm.gov/mmd/harding-mine-si025mn/?et_fb=1&PageSpeed=off](https://www.emnrd.nm.gov/mmd/harding-mine-si025mn/?et_fb=1&PageSpeed=off) Mining and Minerals

Please provide any comments or request a formal consultation by March 1, 2025 If you wish to consult on this application or have any questions, please contact me at (505) 216-8945, or email samantha.rynas@emnrd.nm.gov.

Sincerely,

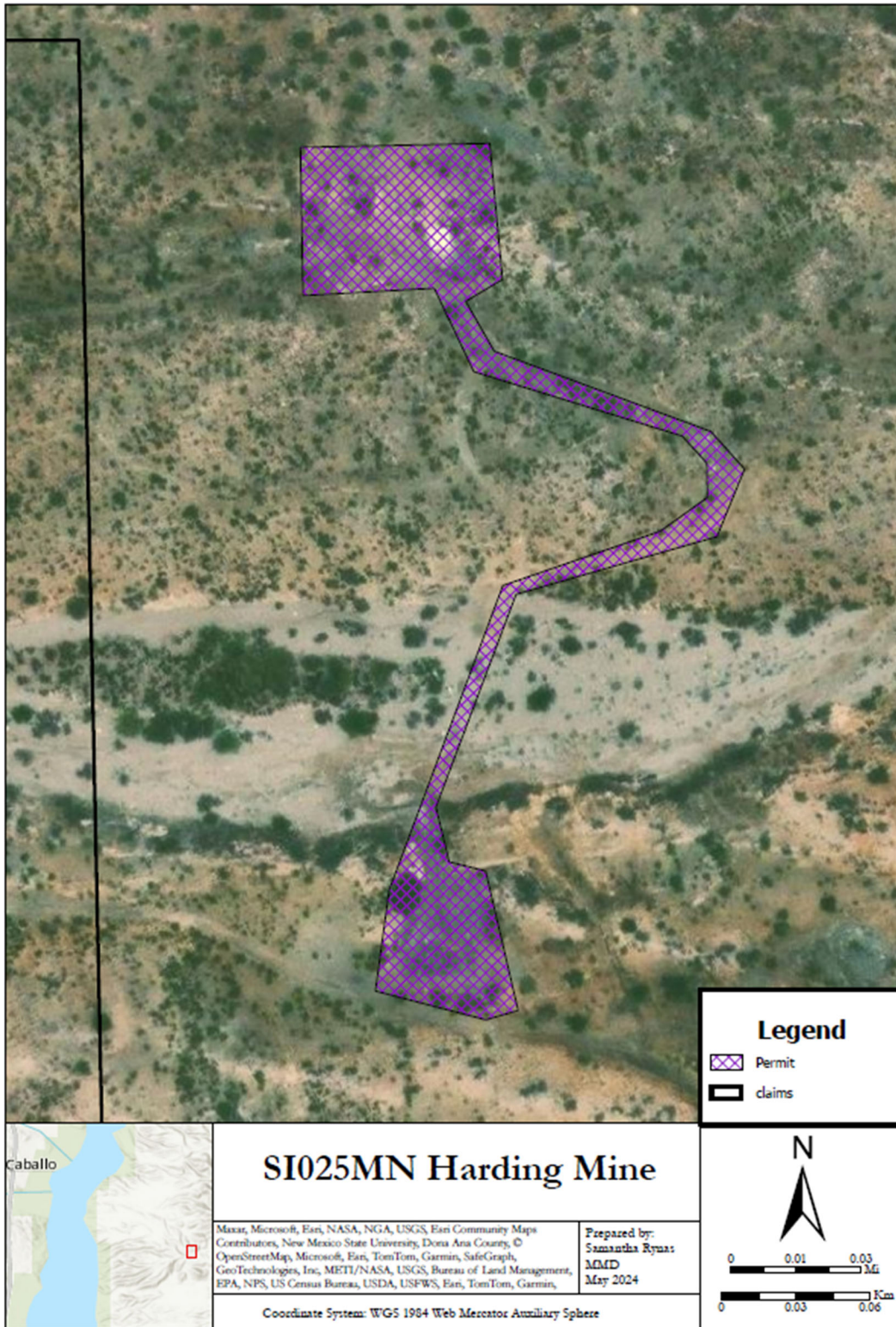
Samantha Rynas, Permit Lead
Mining Act Reclamation Program (MARP)
Mining and Minerals Division

CC: DJ Ennis, Program Manager, MARP/MMD
Clint Chisler, Reclamation Specialist Supervisor, MARP/MMD
Mine File (SI025MN)

RE: Request for Review and Comment on the Draft Baseline Data Report; La Jara Mesa Mine, Laramide Resources (USA) Inc., Permit No. CI008RN

September 19, 2024

Page 2



State of New Mexico
Energy, Minerals and Natural Resources Department

Michelle Lujan Grisham
Governor

Melanie A. Kenderdine
Cabinet Secretary-Designate

Benjamin Shelton
Acting Deputy Cabinet Secretary

Albert Chang, Director
Mining and Minerals Division



January 27, 2025

THPO Javier Loera
305 Yala Lane
El Paso, TX 79907

RE: Request for Comments and Offer to Consult on on Modification 24-1 Harding Mine; Swani LLC., Permit No. SI025MN

Dear THPO Loera,

The Mining and Minerals Division (MMD) of the New Mexico Energy, Minerals, and Natural Resources Department has received an application from Sawni LLC. requesting a modification to the shaft closure and final release of the Harding Mine Permit (SI025MN) located Sierra County under 19.10.12.1210 NMAC of the New Mexico Mining Act (NMSA 1978, §69-36-1 et seq.).

The Harding Mine has already PUF plugged the shaft and removed the building from the site. The previous closure plan included tearing out the cement pad, however; the BLM has agreed to leaving this pad in place for closure. This site is located on BLM lands in the Caballo Mountains with-in Sierra County, New Mexico.

This notification of application is being submitted to you pursuant to the State Tribal Collaboration Act. MMD is requesting comments from you on any traditional, cultural and or religious properties that you would like MMD to take into consideration and is offering to consult with you on the application. Please see the attached map of the project vicinity. The application can be viewed in its entirety by visiting the MMD web site at;

[Harding Mine SI025MN - https://www.emnrd.nm.gov/mmd/harding-mine-si025mn/?et_fb=1&PageSpeed=off](https://www.emnrd.nm.gov/mmd/harding-mine-si025mn/?et_fb=1&PageSpeed=off) Mining and Minerals

Please provide any comments or request a formal consultation by March 1, 2025 If you wish to consult on this application or have any questions, please contact me at (505) 216-8945, or email samantha.rynas@emnrd.nm.gov.

Sincerely,

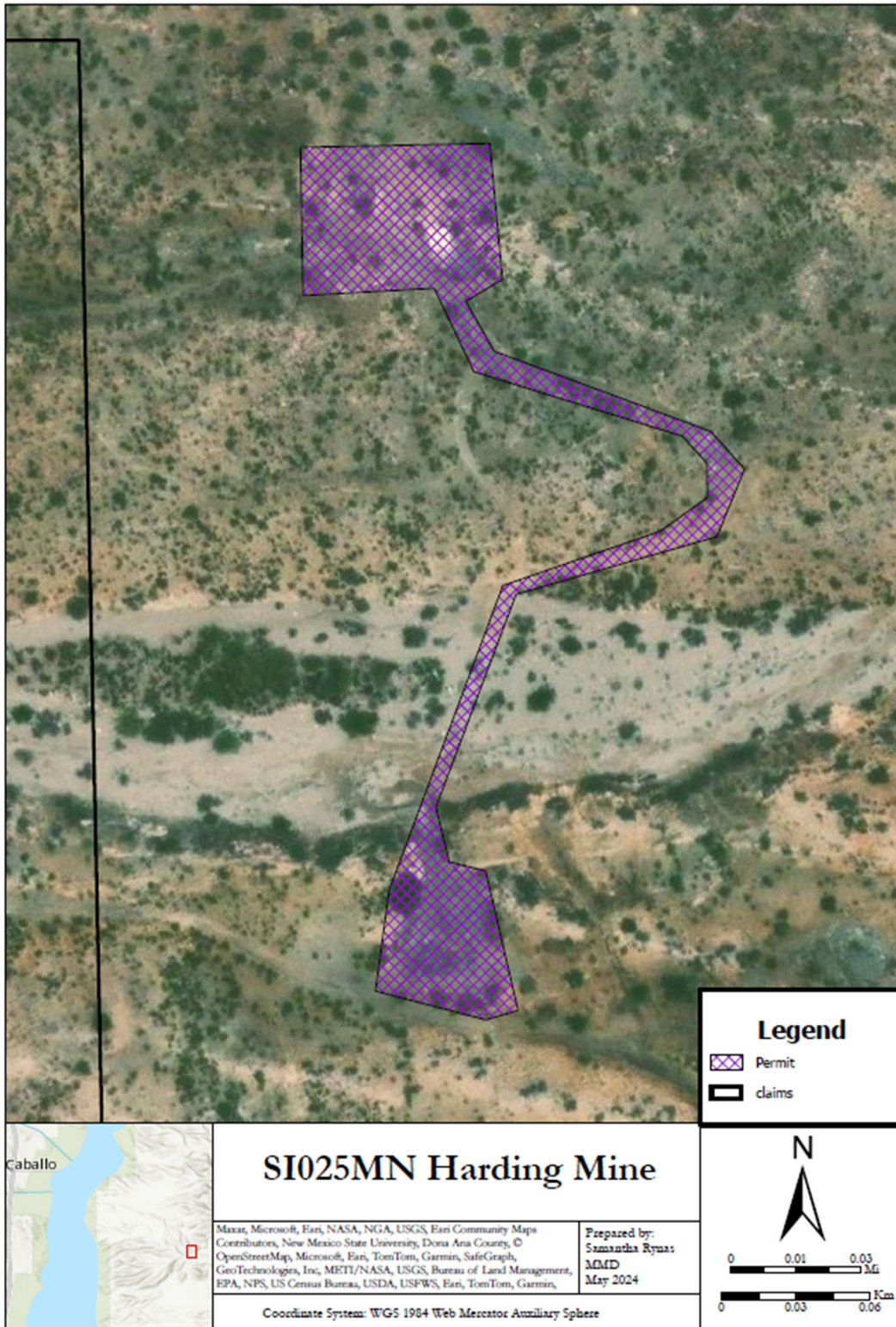
Samantha Rynas, Permit Lead
Mining Act Reclamation Program (MARP)
Mining and Minerals Division

CC: DJ Ennis, Program Manager, MARP/MMD
Clint Chisler, Reclamation Specialist Supervisor, MARP/MMD
Mine File (SI025MN)

RE: Request for Review and Comment on the Draft Baseline Data Report; La Jara Mesa Mine, Laramide Resources (USA) Inc., Permit No. CI008RN

September 19, 2024

Page 2



State of New Mexico
Energy, Minerals and Natural Resources Department

Michelle Lujan Grisham
Governor

Melanie A. Kenderdine
Cabinet Secretary-Designate

Benjamin Shelton
Acting Deputy Cabinet Secretary

Albert Chang, Director
Mining and Minerals Division



January 27, 2025

Chairwoman Lori Gooday-Ware
Rt. 2, Box 121
Apache, OK 73006

RE: Request for Comments and Offer to Consult on on Modification 24-1 Harding Mine; Swani LLC., Permit No. SI025MN

Dear Chairwoman Gooday-Ware,

The Mining and Minerals Division (MMD) of the New Mexico Energy, Minerals, and Natural Resources Department has received an application from Sawni LLC. requesting a modification to the shaft closure and final release of the Harding Mine Permit (SI025MN) located Sierra County under 19.10.12.1210 NMAC of the New Mexico Mining Act (NMSA 1978, §69-36-1 et seq.).

The Harding Mine has already PUF plugged the shaft and removed the building from the site. The previous closure plan included tearing out the cement pad, however; the BLM has agreed to leaving this pad in place for closure. This site is located on BLM lands in the Caballo Mountains with-in Sierra County, New Mexico.

This notification of application is being submitted to you pursuant to the State Tribal Collaboration Act. MMD is requesting comments from you on any traditional, cultural and or religious properties that you would like MMD to take into consideration and is offering to consult with you on the application. Please see the attached map of the project vicinity. The application can be viewed in its entirety by visiting the MMD web site at;

[Harding Mine SI025MN - https://www.emnrd.nm.gov/mmd/harding-mine-si025mn/?et_fb=1&PageSpeed=off](https://www.emnrd.nm.gov/mmd/harding-mine-si025mn/?et_fb=1&PageSpeed=off) Mining and Minerals

Please provide any comments or request a formal consultation by March 1, 2025 If you wish to consult on this application or have any questions, please contact me at (505) 216-8945, or email samantha.rynas@emnrd.nm.gov.

Sincerely,

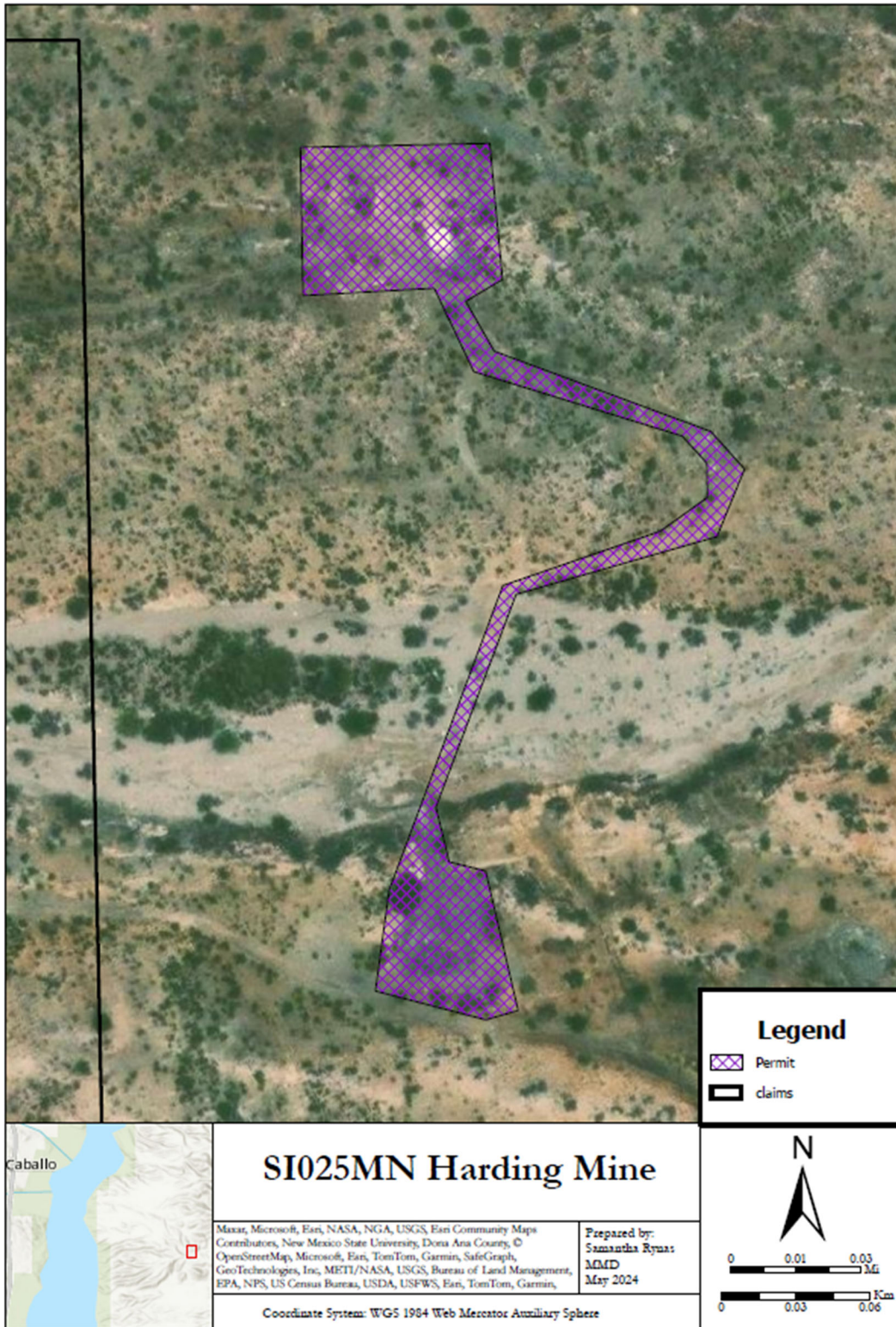
Samantha Rynas, Permit Lead
Mining Act Reclamation Program (MARP)
Mining and Minerals Division

CC: DJ Ennis, Program Manager, MARP/MMD
Clint Chisler, Reclamation Specialist Supervisor, MARP/MMD
Mine File (SI025MN)

RE: Request for Review and Comment on the Draft Baseline Data Report; La Jara Mesa Mine, Laramide Resources (USA) Inc., Permit No. CI008RN

September 19, 2024

Page 2



State of New Mexico
Energy, Minerals and Natural Resources Department

Michelle Lujan Grisham
Governor

Melanie A. Kenderdine
Cabinet Secretary-Designate

Benjamin Shelton
Acting Deputy Cabinet Secretary

Albert Chang, Director
Mining and Minerals Division



January 27, 2025

President Eddy Martinez
P.O. Box 227
Mescalero, NM 88340

RE: Request for Comments and Offer to Consult on on Modification 24-1 Harding Mine; Swani LLC., Permit No. SI025MN

Dear President Martinez,

The Mining and Minerals Division (MMD) of the New Mexico Energy, Minerals, and Natural Resources Department has received an application from Sawni LLC. requesting a modification to the shaft closure and final release of the Harding Mine Permit (SI025MN) located Sierra County under 19.10.12.1210 NMAC of the New Mexico Mining Act (NMSA 1978, §69-36-1 et seq.).

The Harding Mine has already PUF plugged the shaft and removed the building from the site. The previous closure plan included tearing out the cement pad, however; the BLM has agreed to leaving this pad in place for closure. This site is located on BLM lands in the Caballo Mountains with-in Sierra County, New Mexico.

This notification of application is being submitted to you pursuant to the State Tribal Collaboration Act. MMD is requesting comments from you on any traditional, cultural and or religious properties that you would like MMD to take into consideration and is offering to consult with you on the application. Please see the attached map of the project vicinity. The application can be viewed in its entirety by visiting the MMD web site at;

[Harding Mine SI025MN - https://www.emnrd.nm.gov/mmd/harding-mine-si025mn/?et_fb=1&PageSpeed=off](https://www.emnrd.nm.gov/mmd/harding-mine-si025mn/?et_fb=1&PageSpeed=off) Mining and Minerals

Please provide any comments or request a formal consultation by March 1, 2025 If you wish to consult on this application or have any questions, please contact me at (505) 216-8945, or email samantha.rynas@emnrd.nm.gov.

Sincerely,

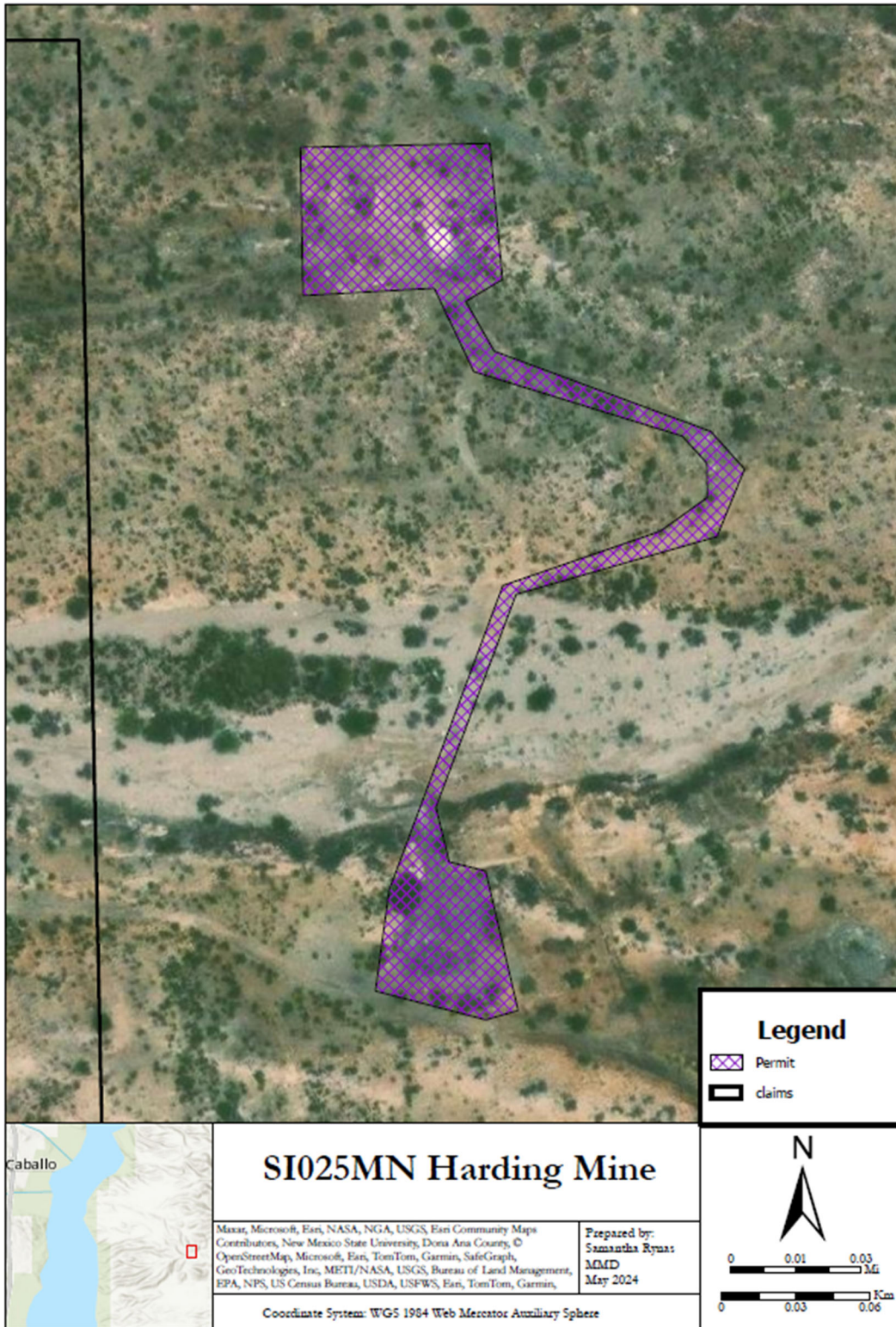
Samantha Rynas, Permit Lead
Mining Act Reclamation Program (MARF)
Mining and Minerals Division

CC: DJ Ennis, Program Manager, MARF/MMD
Clint Chisler, Reclamation Specialist Supervisor, MARF/MMD
Mine File (SI025MN)

RE: Request for Review and Comment on the Draft Baseline Data Report; La Jara Mesa Mine, Laramide Resources (USA) Inc., Permit No. CI008RN

September 19, 2024

Page 2



State of New Mexico
Energy, Minerals and Natural Resources Department

Michelle Lujan Grisham
Governor

Melanie A. Kenderdine
Cabinet Secretary-Designate

Benjamin Shelton
Acting Deputy Cabinet Secretary

Albert Chang, Director
Mining and Minerals Division



January 27, 2025

THPO Holly Houghton
P.O. Box 227
Mescalero, NM 88340

RE: Request for Comments and Offer to Consult on on Modification 24-1 Harding Mine; Swani LLC., Permit No. SI025MN

Dear THPO Houghton,

The Mining and Minerals Division (MMD) of the New Mexico Energy, Minerals, and Natural Resources Department has received an application from Sawni LLC. requesting a modification to the shaft closure and final release of the Harding Mine Permit (SI025MN) located Sierra County under 19.10.12.1210 NMAC of the New Mexico Mining Act (NMSA 1978, §69-36-1 et seq.).

The Harding Mine has already PUF plugged the shaft and removed the building from the site. The previous closure plan included tearing out the cement pad, however; the BLM has agreed to leaving this pad in place for closure. This site is located on BLM lands in the Caballo Mountains with-in Sierra County, New Mexico.

This notification of application is being submitted to you pursuant to the State Tribal Collaboration Act. MMD is requesting comments from you on any traditional, cultural and or religious properties that you would like MMD to take into consideration and is offering to consult with you on the application. Please see the attached map of the project vicinity. The application can be viewed in its entirety by visiting the MMD web site at;

[Harding Mine SI025MN - https://www.emnrd.nm.gov/mmd/harding-mine-si025mn/?et_fb=1&PageSpeed=off](https://www.emnrd.nm.gov/mmd/harding-mine-si025mn/?et_fb=1&PageSpeed=off) [Mining and Minerals](#)

Please provide any comments or request a formal consultation by March 1, 2025 If you wish to consult on this application or have any questions, please contact me at (505) 216-8945, or email samantha.rynas@emnrd.nm.gov.

Sincerely,

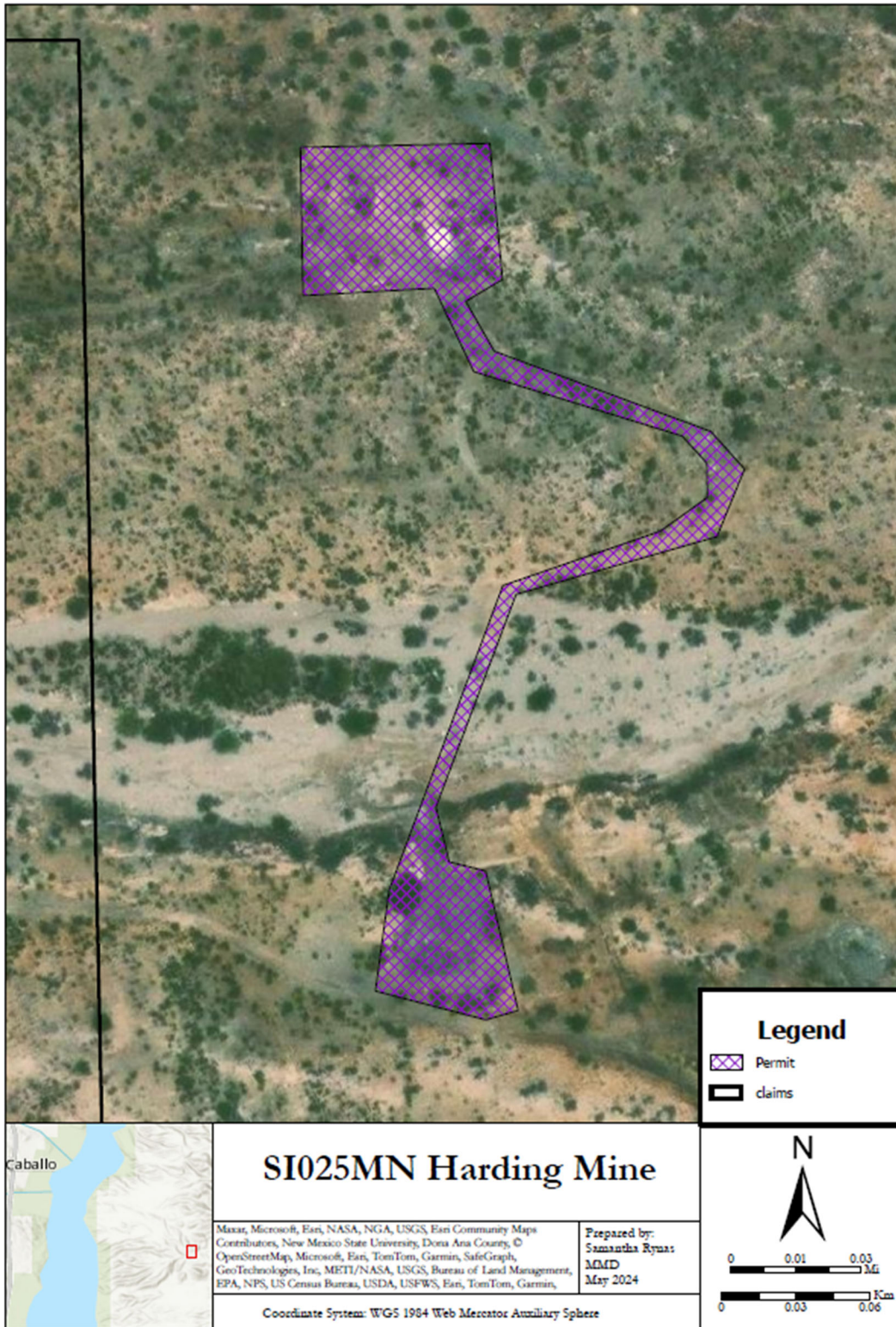
Samantha Rynas, Permit Lead
Mining Act Reclamation Program (MARP)
Mining and Minerals Division

CC: DJ Ennis, Program Manager, MARP/MMD
Clint Chisler, Reclamation Specialist Supervisor, MARP/MMD
Mine File (SI025MN)

RE: Request for Review and Comment on the Draft Baseline Data Report; La Jara Mesa Mine, Laramide Resources (USA) Inc., Permit No. CI008RN

September 19, 2024

Page 2



State of New Mexico
Energy, Minerals and Natural Resources Department

Michelle Lujan Grisham
Governor

Melanie A. Kenderdine
Cabinet Secretary-Designate

Benjamin Shelton
Acting Deputy Cabinet Secretary

Albert Chang, Director
Mining and Minerals Division



January 27, 2025

Chairman Kasey Velasquez
P.O. Box 700
Whiteriver, AZ 85941

RE: Request for Comments and Offer to Consult on on Modification 24-1 Harding Mine; Swani LLC., Permit No. SI025MN

Dear Chairman Velasquez,

The Mining and Minerals Division (MMD) of the New Mexico Energy, Minerals, and Natural Resources Department has received an application from Sawni LLC. requesting a modification to the shaft closure and final release of the Harding Mine Permit (SI025MN) located Sierra County under 19.10.12.1210 NMAC of the New Mexico Mining Act (NMSA 1978, §69-36-1 et seq.).

The Harding Mine has already PUF plugged the shaft and removed the building from the site. The previous closure plan included tearing out the cement pad, however; the BLM has agreed to leaving this pad in place for closure. This site is located on BLM lands in the Caballo Mountains with-in Sierra County, New Mexico.

This notification of application is being submitted to you pursuant to the State Tribal Collaboration Act. MMD is requesting comments from you on any traditional, cultural and or religious properties that you would like MMD to take into consideration and is offering to consult with you on the application. Please see the attached map of the project vicinity. The application can be viewed in its entirety by visiting the MMD web site at;

[Harding Mine SI025MN - https://www.emnrd.nm.gov/mmd/harding-mine-si025mn/?et_fb=1&PageSpeed=off](https://www.emnrd.nm.gov/mmd/harding-mine-si025mn/?et_fb=1&PageSpeed=off) Mining and Minerals

Please provide any comments or request a formal consultation by March 1, 2025 If you wish to consult on this application or have any questions, please contact me at (505) 216-8945, or email samantha.rynas@emnrd.nm.gov.

Sincerely,

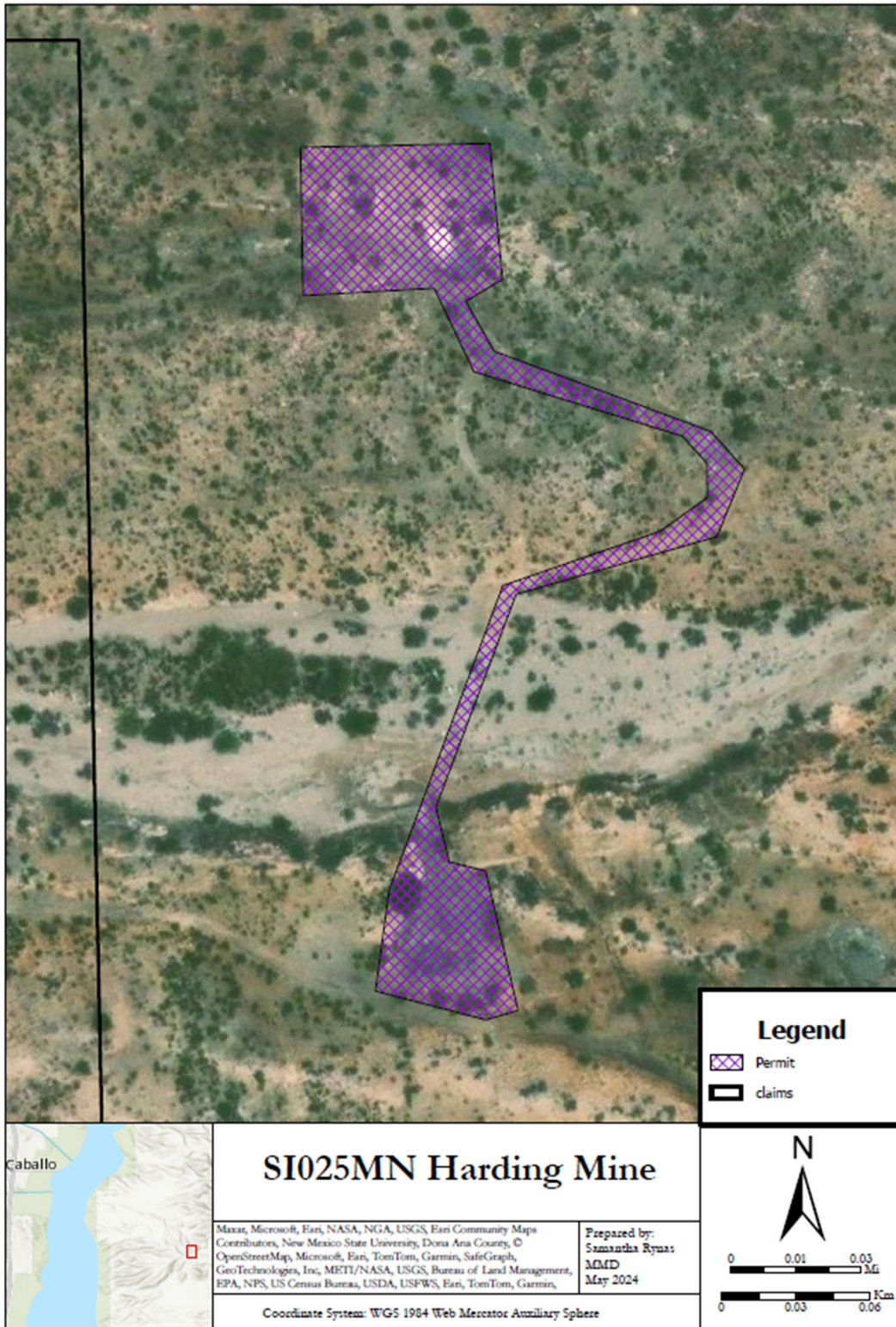
Samantha Rynas, Permit Lead
Mining Act Reclamation Program (MARP)
Mining and Minerals Division

CC: DJ Ennis, Program Manager, MARP/MMD
Clint Chisler, Reclamation Specialist Supervisor, MARP/MMD
Mine File (SI025MN)

RE: Request for Review and Comment on the Draft Baseline Data Report; La Jara Mesa Mine, Laramide Resources (USA) Inc., Permit No. CI008RN

September 19, 2024

Page 2



State of New Mexico
Energy, Minerals and Natural Resources Department

Michelle Lujan Grisham
Governor

Melanie A. Kenderdine
Cabinet Secretary-Designate

Benjamin Shelton
Acting Deputy Cabinet Secretary

Albert Chang, Director
Mining and Minerals Division



January 27, 2025

THPO Mark Altaha
P.O. Box 1032
Fort Apache, AZ 85926

RE: Request for Comments and Offer to Consult on on Modification 24-1 Harding Mine; Swani LLC., Permit No. SI025MN

Dear THPO Altaha,

The Mining and Minerals Division (MMD) of the New Mexico Energy, Minerals, and Natural Resources Department has received an application from Sawni LLC. requesting a modification to the shaft closure and final release of the Harding Mine Permit (SI025MN) located Sierra County under 19.10.12.1210 NMAC of the New Mexico Mining Act (NMSA 1978, §69-36-1 et seq.).

The Harding Mine has already PUF plugged the shaft and removed the building from the site. The previous closure plan included tearing out the cement pad, however; the BLM has agreed to leaving this pad in place for closure. This site is located on BLM lands in the Caballo Mountains with-in Sierra County, New Mexico.

This notification of application is being submitted to you pursuant to the State Tribal Collaboration Act. MMD is requesting comments from you on any traditional, cultural and or religious properties that you would like MMD to take into consideration and is offering to consult with you on the application. Please see the attached map of the project vicinity. The application can be viewed in its entirety by visiting the MMD web site at;

[Harding Mine SI025MN - https://www.emnrd.nm.gov/mmd/harding-mine-si025mn/?et_fb=1&PageSpeed=off](https://www.emnrd.nm.gov/mmd/harding-mine-si025mn/?et_fb=1&PageSpeed=off) Mining and Minerals

Please provide any comments or request a formal consultation by March 1, 2025 If you wish to consult on this application or have any questions, please contact me at (505) 216-8945, or email samantha.rynas@emnrd.nm.gov.

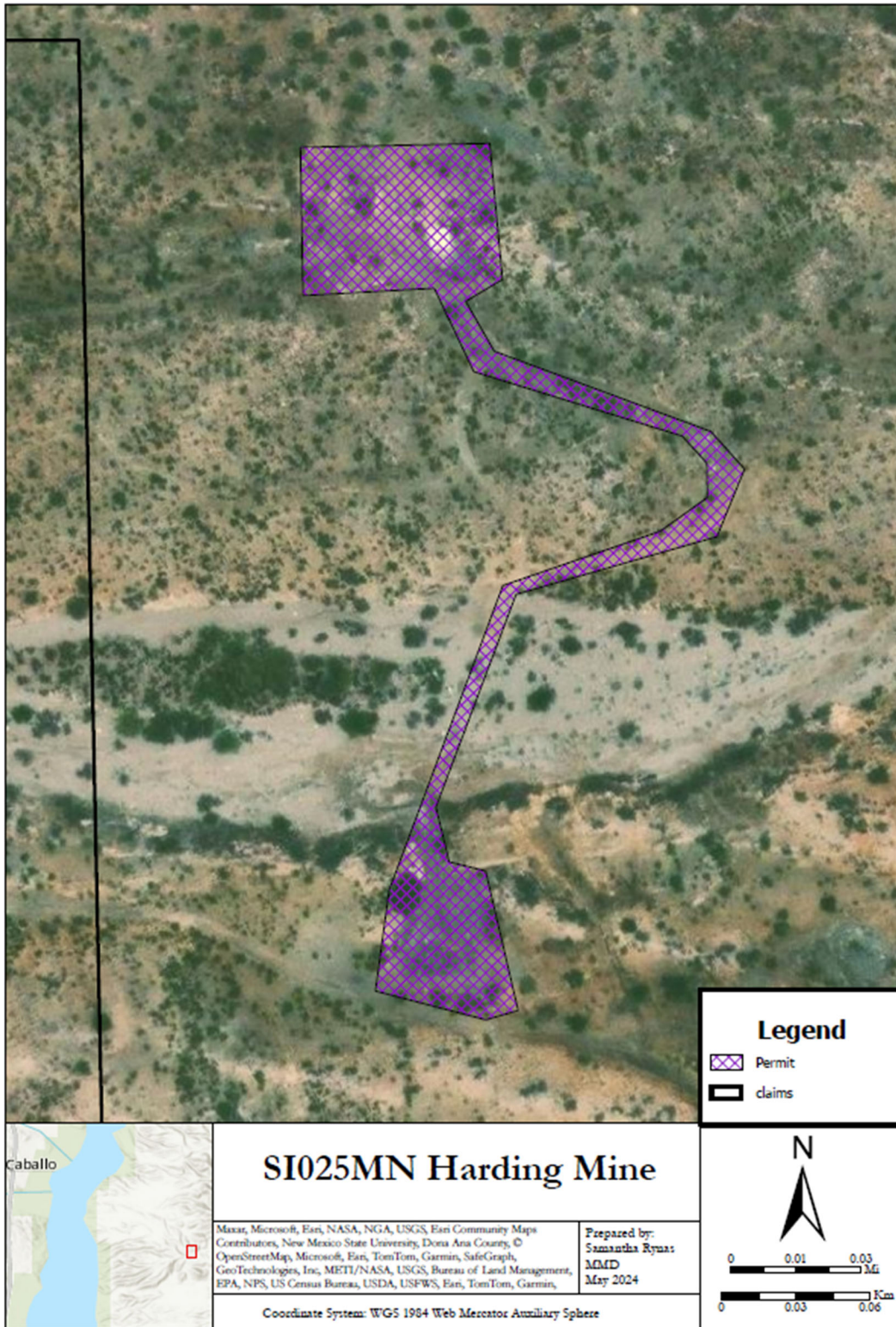
Sincerely,

Samantha Rynas, Permit Lead
Mining Act Reclamation Program (MARP)
Mining and Minerals Division

CC: DJ Ennis, Program Manager, MARP/MMD
Clint Chisler, Reclamation Specialist Supervisor, MARP/MMD
Mine File (SI025MN)

September 19, 2024

Page 2



State of New Mexico
Energy, Minerals and Natural Resources Department

Michelle Lujan Grisham
Governor

Melanie A. Kenderdine
Cabinet Secretary-Designate

Benjamin Shelton
Acting Deputy Cabinet Secretary

Albert Chang, Director
Mining and Minerals Division



January 27, 2025

Chairman Mark Woommavovah
P.O. Box 908
Lawton, OK 73502

RE: Request for Comments and Offer to Consult on on Modification 24-1 Harding Mine; Swani LLC., Permit No. SI025MN

Dear Chairman Woommavovah,

The Mining and Minerals Division (MMD) of the New Mexico Energy, Minerals, and Natural Resources Department has received an application from Sawni LLC. requesting a modification to the shaft closure and final release of the Harding Mine Permit (SI025MN) located Sierra County under 19.10.12.1210 NMAC of the New Mexico Mining Act (NMSA 1978, §69-36-1 et seq.).

The Harding Mine has already PUF plugged the shaft and removed the building from the site. The previous closure plan included tearing out the cement pad, however; the BLM has agreed to leaving this pad in place for closure. This site is located on BLM lands in the Caballo Mountains with-in Sierra County, New Mexico.

This notification of application is being submitted to you pursuant to the State Tribal Collaboration Act. MMD is requesting comments from you on any traditional, cultural and or religious properties that you would like MMD to take into consideration and is offering to consult with you on the application. Please see the attached map of the project vicinity. The application can be viewed in its entirety by visiting the MMD web site at;

[Harding Mine SI025MN - https://www.emnrd.nm.gov/mmd/harding-mine-si025mn/?et_fb=1&PageSpeed=off](https://www.emnrd.nm.gov/mmd/harding-mine-si025mn/?et_fb=1&PageSpeed=off) Mining and Minerals

Please provide any comments or request a formal consultation by March 1, 2025 If you wish to consult on this application or have any questions, please contact me at (505) 216-8945, or email samantha.rynas@emnrd.nm.gov.

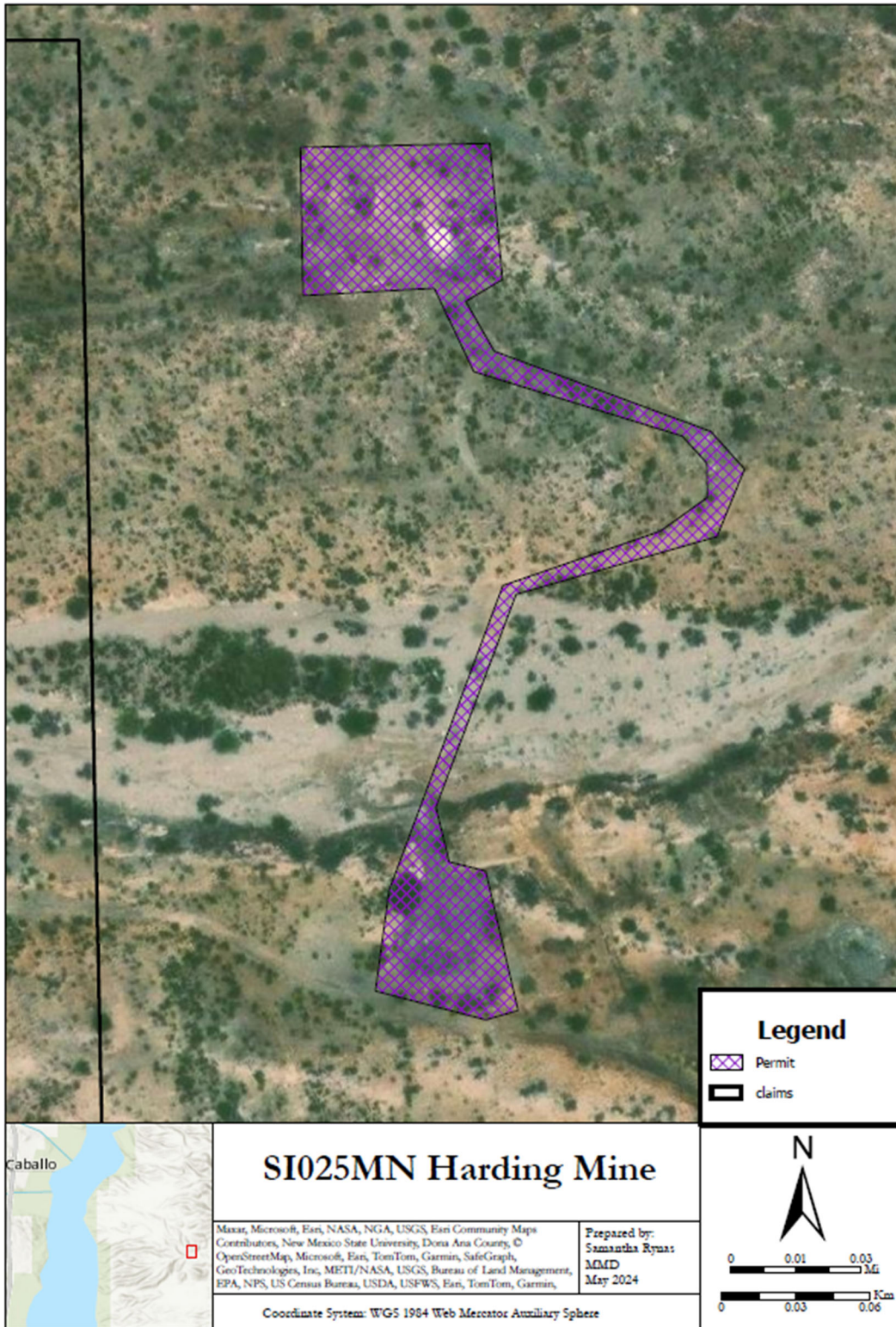
Sincerely,

Samantha Rynas, Permit Lead
Mining Act Reclamation Program (MARP)
Mining and Minerals Division

CC: DJ Ennis, Program Manager, MARP/MMD
Clint Chisler, Reclamation Specialist Supervisor, MARP/MMD
Mine File (SI025MN)

September 19, 2024

Page 2



State of New Mexico
Energy, Minerals and Natural Resources Department

Michelle Lujan Grisham
Governor

Melanie A. Kenderdine
Cabinet Secretary-Designate

Benjamin Shelton
Acting Deputy Cabinet Secretary

Albert Chang, Director
Mining and Minerals Division



January 27, 2025

THPO Martina Minthorn
P.O. Box 908
Lawton, OK 73502

RE: Request for Comments and Offer to Consult on on Modification 24-1 Harding Mine; Swani LLC., Permit No. SI025MN

Dear THPO Minthorn,

The Mining and Minerals Division (MMD) of the New Mexico Energy, Minerals, and Natural Resources Department has received an application from Sawni LLC. requesting a modification to the shaft closure and final release of the Harding Mine Permit (SI025MN) located Sierra County under 19.10.12.1210 NMAC of the New Mexico Mining Act (NMSA 1978, §69-36-1 et seq.).

The Harding Mine has already PUF plugged the shaft and removed the building from the site. The previous closure plan included tearing out the cement pad, however; the BLM has agreed to leaving this pad in place for closure. This site is located on BLM lands in the Caballo Mountains with-in Sierra County, New Mexico.

This notification of application is being submitted to you pursuant to the State Tribal Collaboration Act. MMD is requesting comments from you on any traditional, cultural and or religious properties that you would like MMD to take into consideration and is offering to consult with you on the application. Please see the attached map of the project vicinity. The application can be viewed in its entirety by visiting the MMD web site at;

[Harding Mine SI025MN - https://www.emnrd.nm.gov/mmd/harding-mine-si025mn/?et_fb=1&PageSpeed=off](https://www.emnrd.nm.gov/mmd/harding-mine-si025mn/?et_fb=1&PageSpeed=off) Mining and Minerals

Please provide any comments or request a formal consultation by March 1, 2025 If you wish to consult on this application or have any questions, please contact me at (505) 216-8945, or email samantha.rynas@emnrd.nm.gov.

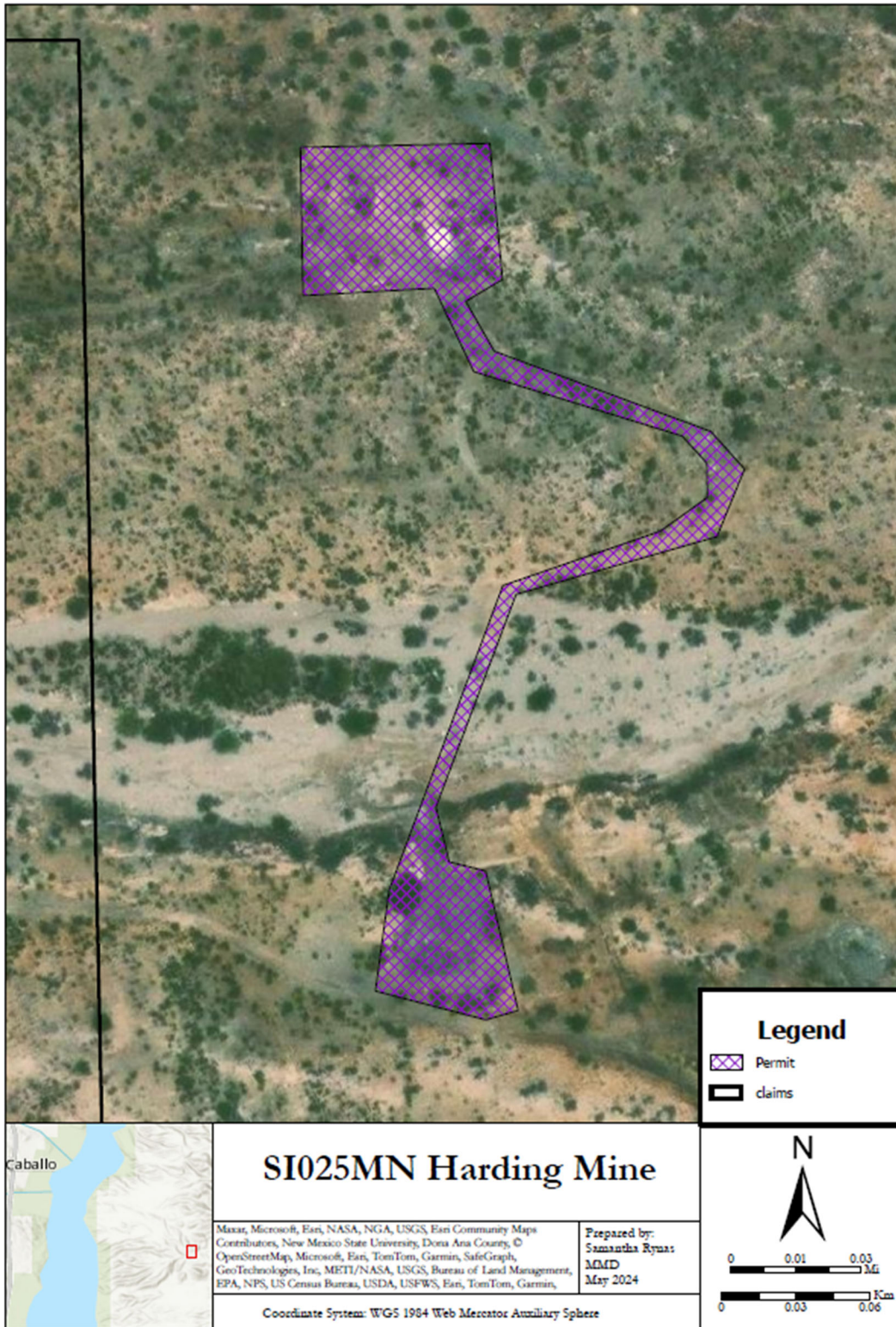
Sincerely,

Samantha Rynas, Permit Lead
Mining Act Reclamation Program (MARP)
Mining and Minerals Division

CC: DJ Ennis, Program Manager, MARP/MMD
Clint Chisler, Reclamation Specialist Supervisor, MARP/MMD
Mine File (SI025MN)

September 19, 2024

Page 2



State of New Mexico
Energy, Minerals and Natural Resources Department

Michelle Lujan Grisham
Governor

Melanie A. Kenderdine
Cabinet Secretary-Designate

Benjamin Shelton
Acting Deputy Cabinet Secretary

Albert Chang, Director
Mining and Minerals Division



January 27, 2025

NAGPRA Director Margie Murrow
P.O. Box 908
Lawton, OK 73502

RE: Request for Comments and Offer to Consult on on Modification 24-1 Harding Mine; Swani LLC., Permit No. SI025MN

Dear NAGPRA Director Murrow,

The Mining and Minerals Division (MMD) of the New Mexico Energy, Minerals, and Natural Resources Department has received an application from Sawni LLC. requesting a modification to the shaft closure and final release of the Harding Mine Permit (SI025MN) located Sierra County under 19.10.12.1210 NMAC of the New Mexico Mining Act (NMSA 1978, §69-36-1 et seq.).

The Harding Mine has already PUF plugged the shaft and removed the building from the site. The previous closure plan included tearing out the cement pad, however; the BLM has agreed to leaving this pad in place for closure. This site is located on BLM lands in the Caballo Mountains with-in Sierra County, New Mexico.

This notification of application is being submitted to you pursuant to the State Tribal Collaboration Act. MMD is requesting comments from you on any traditional, cultural and or religious properties that you would like MMD to take into consideration and is offering to consult with you on the application. Please see the attached map of the project vicinity. The application can be viewed in its entirety by visiting the MMD web site at;

[Harding Mine SI025MN - https://www.emnrd.nm.gov/mmd/harding-mine-si025mn/?et_fb=1&PageSpeed=off](https://www.emnrd.nm.gov/mmd/harding-mine-si025mn/?et_fb=1&PageSpeed=off) Mining and Minerals

Please provide any comments or request a formal consultation by March 1, 2025 If you wish to consult on this application or have any questions, please contact me at (505) 216-8945, or email samantha.rynas@emnrd.nm.gov.

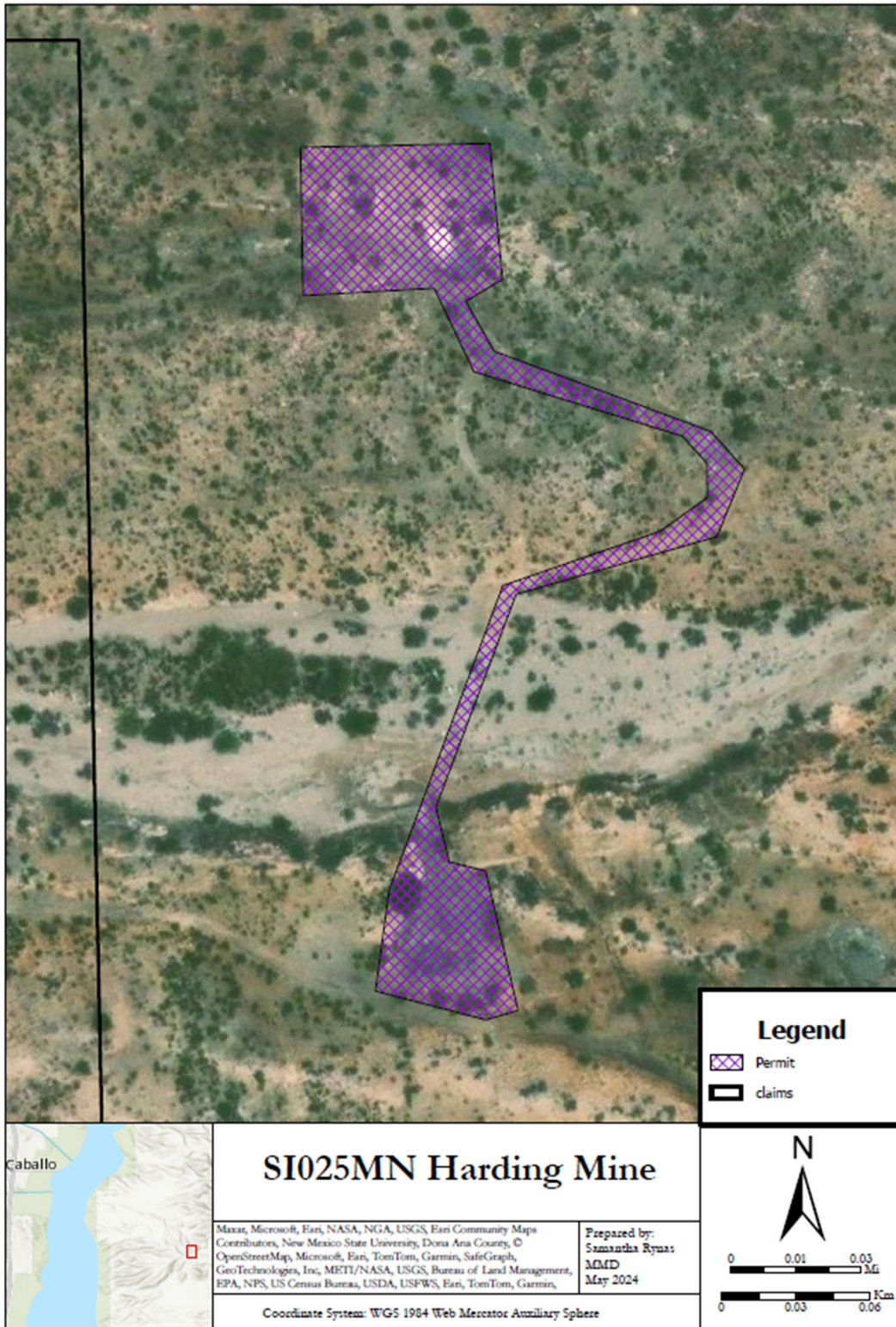
Sincerely,

Samantha Rynas, Permit Lead
Mining Act Reclamation Program (MARP)
Mining and Minerals Division

CC: DJ Ennis, Program Manager, MARP/MMD
Clint Chisler, Reclamation Specialist Supervisor, MARP/MMD
Mine File (SI025MN)

September 19, 2024

Page 2



State of New Mexico
Energy, Minerals and Natural Resources Department

Michelle Lujan Grisham
Governor

Melanie A. Kenderdine
Cabinet Secretary-Designate

Benjamin Shelton
Acting Deputy Cabinet Secretary

Albert Chang, Director
Mining and Minerals Division



January 27, 2025

Chairman Lawrence SpottedBird
P.O. Box 369
Carnegie, OK 73015

RE: Request for Comments and Offer to Consult on on Modification 24-1 Harding Mine; Swani LLC., Permit No. SI025MN

Dear Chairman SpottedBird,

The Mining and Minerals Division (MMD) of the New Mexico Energy, Minerals, and Natural Resources Department has received an application from Sawni LLC. requesting a modification to the shaft closure and final release of the Harding Mine Permit (SI025MN) located Sierra County under 19.10.12.1210 NMAC of the New Mexico Mining Act (NMSA 1978, §69-36-1 et seq.).

The Harding Mine has already PUF plugged the shaft and removed the building from the site. The previous closure plan included tearing out the cement pad, however; the BLM has agreed to leaving this pad in place for closure. This site is located on BLM lands in the Caballo Mountains with-in Sierra County, New Mexico.

This notification of application is being submitted to you pursuant to the State Tribal Collaboration Act. MMD is requesting comments from you on any traditional, cultural and or religious properties that you would like MMD to take into consideration and is offering to consult with you on the application. Please see the attached map of the project vicinity. The application can be viewed in its entirety by visiting the MMD web site at;

[Harding Mine SI025MN - https://www.emnrd.nm.gov/mmd/harding-mine-si025mn/?et_fb=1&PageSpeed=off](https://www.emnrd.nm.gov/mmd/harding-mine-si025mn/?et_fb=1&PageSpeed=off) [Mining and Minerals](#)

Please provide any comments or request a formal consultation by March 1, 2025 If you wish to consult on this application or have any questions, please contact me at (505) 216-8945, or email samantha.rynas@emnrd.nm.gov.

Sincerely,

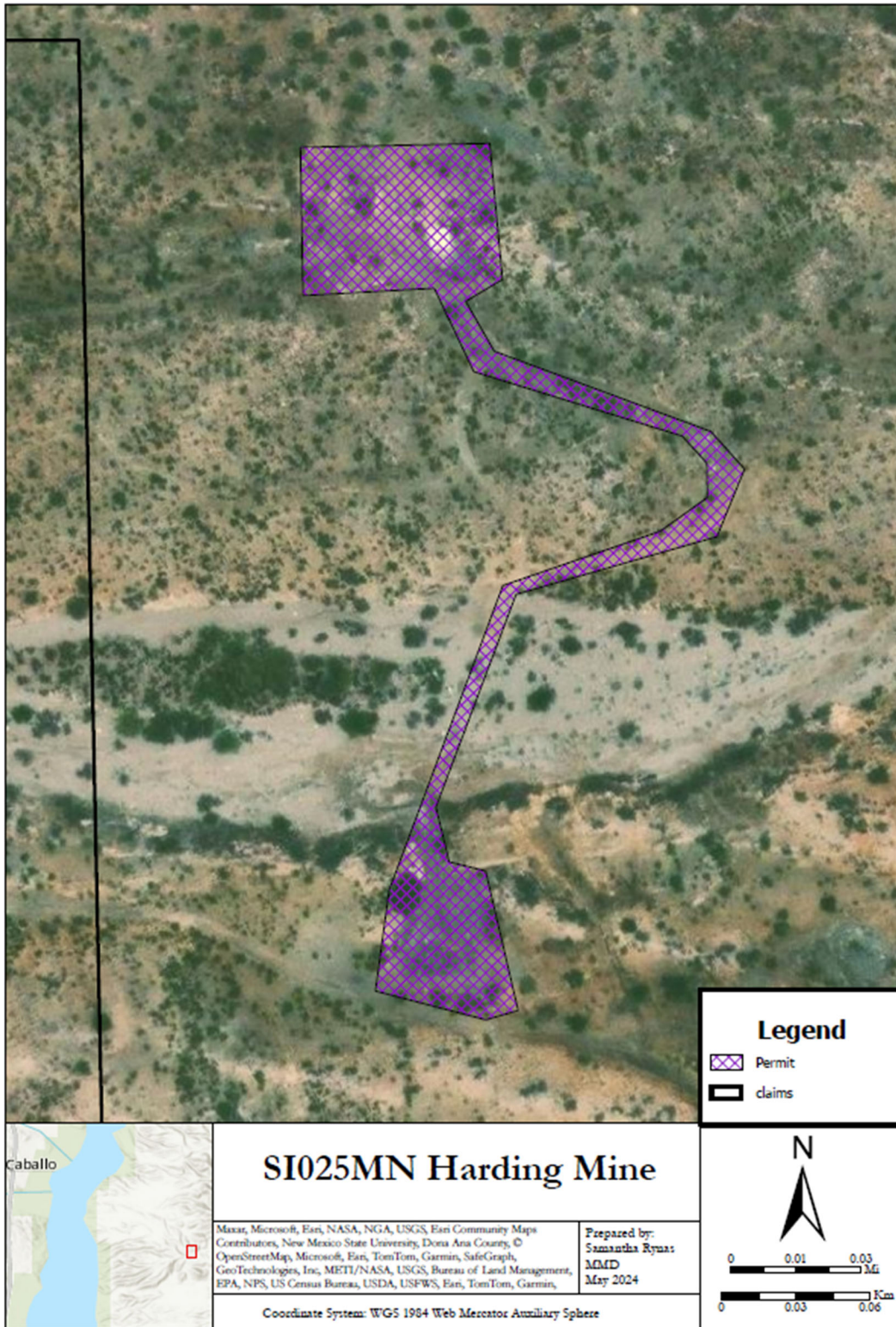
Samantha Rynas, Permit Lead
Mining Act Reclamation Program (MARP)
Mining and Minerals Division

CC: DJ Ennis, Program Manager, MARP/MMD
Clint Chisler, Reclamation Specialist Supervisor, MARP/MMD
Mine File (SI025MN)

RE: Request for Review and Comment on the Draft Baseline Data Report; La Jara Mesa Mine, Laramide Resources (USA) Inc., Permit No. CI008RN

September 19, 2024

Page 2



State of New Mexico
Energy, Minerals and Natural Resources Department

Michelle Lujan Grisham
Governor

Melanie A. Kenderdine
Cabinet Secretary-Designate

Benjamin Shelton
Acting Deputy Cabinet Secretary

Albert Chang, Director
Mining and Minerals Division



January 27, 2025

THPO Amanda Hill
100 Kiowa Way
Carnegie, OK 73015

RE: Request for Comments and Offer to Consult on on Modification 24-1 Harding Mine; Swani LLC., Permit No. SI025MN

Dear THPO Hill,

The Mining and Minerals Division (MMD) of the New Mexico Energy, Minerals, and Natural Resources Department has received an application from Sawni LLC. requesting a modification to the shaft closure and final release of the Harding Mine Permit (SI025MN) located Sierra County under 19.10.12.1210 NMAC of the New Mexico Mining Act (NMSA 1978, §69-36-1 et seq.).

The Harding Mine has already PUF plugged the shaft and removed the building from the site. The previous closure plan included tearing out the cement pad, however; the BLM has agreed to leaving this pad in place for closure. This site is located on BLM lands in the Caballo Mountains with-in Sierra County, New Mexico.

This notification of application is being submitted to you pursuant to the State Tribal Collaboration Act. MMD is requesting comments from you on any traditional, cultural and or religious properties that you would like MMD to take into consideration and is offering to consult with you on the application. Please see the attached map of the project vicinity. The application can be viewed in its entirety by visiting the MMD web site at;

[Harding Mine SI025MN - https://www.emnrd.nm.gov/mmd/harding-mine-si025mn/?et_fb=1&PageSpeed=off](https://www.emnrd.nm.gov/mmd/harding-mine-si025mn/?et_fb=1&PageSpeed=off) Mining and Minerals

Please provide any comments or request a formal consultation by March 1, 2025 If you wish to consult on this application or have any questions, please contact me at (505) 216-8945, or email samantha.rynas@emnrd.nm.gov.

Sincerely,

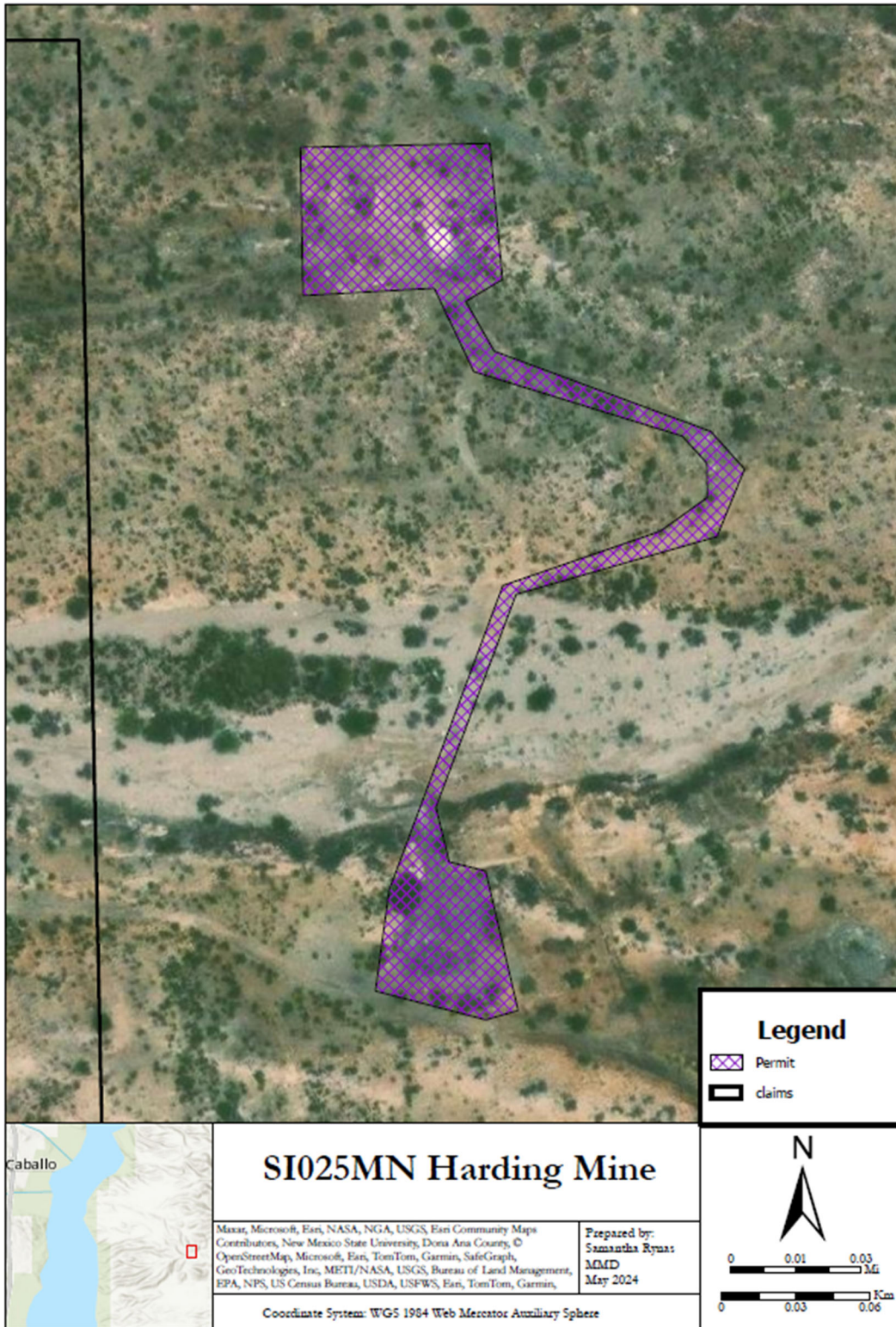
Samantha Rynas, Permit Lead
Mining Act Reclamation Program (MARP)
Mining and Minerals Division

CC: DJ Ennis, Program Manager, MARP/MMD
Clint Chisler, Reclamation Specialist Supervisor, MARP/MMD
Mine File (SI025MN)

RE: Request for Review and Comment on the Draft Baseline Data Report; La Jara Mesa Mine, Laramide Resources (USA) Inc., Permit No. CI008RN

September 19, 2024

Page 2



State of New Mexico
Energy, Minerals and Natural Resources Department

Michelle Lujan Grisham
Governor

Melanie A. Kenderdine
Cabinet Secretary-Designate

Benjamin Shelton
Acting Deputy Cabinet Secretary

Albert Chang, Director
Mining and Minerals Division



January 27, 2025

President Buu Nygren
P.O. Box 7440
Window Rock, AZ 86515

RE: Request for Comments and Offer to Consult on on Modification 24-1 Harding Mine; Swani LLC., Permit No. SI025MN

Dear President Nygren,

The Mining and Minerals Division (MMD) of the New Mexico Energy, Minerals, and Natural Resources Department has received an application from Sawni LLC. requesting a modification to the shaft closure and final release of the Harding Mine Permit (SI025MN) located Sierra County under 19.10.12.1210 NMAC of the New Mexico Mining Act (NMSA 1978, §69-36-1 et seq.).

The Harding Mine has already PUF plugged the shaft and removed the building from the site. The previous closure plan included tearing out the cement pad, however; the BLM has agreed to leaving this pad in place for closure. This site is located on BLM lands in the Caballo Mountains with-in Sierra County, New Mexico.

This notification of application is being submitted to you pursuant to the State Tribal Collaboration Act. MMD is requesting comments from you on any traditional, cultural and or religious properties that you would like MMD to take into consideration and is offering to consult with you on the application. Please see the attached map of the project vicinity. The application can be viewed in its entirety by visiting the MMD web site at;

[Harding Mine SI025MN - https://www.emnrd.nm.gov/mmd/harding-mine-si025mn/?et_fb=1&PageSpeed=off](https://www.emnrd.nm.gov/mmd/harding-mine-si025mn/?et_fb=1&PageSpeed=off) Mining and Minerals

Please provide any comments or request a formal consultation by March 1, 2025 If you wish to consult on this application or have any questions, please contact me at (505) 216-8945, or email samantha.rynas@emnrd.nm.gov.

Sincerely,

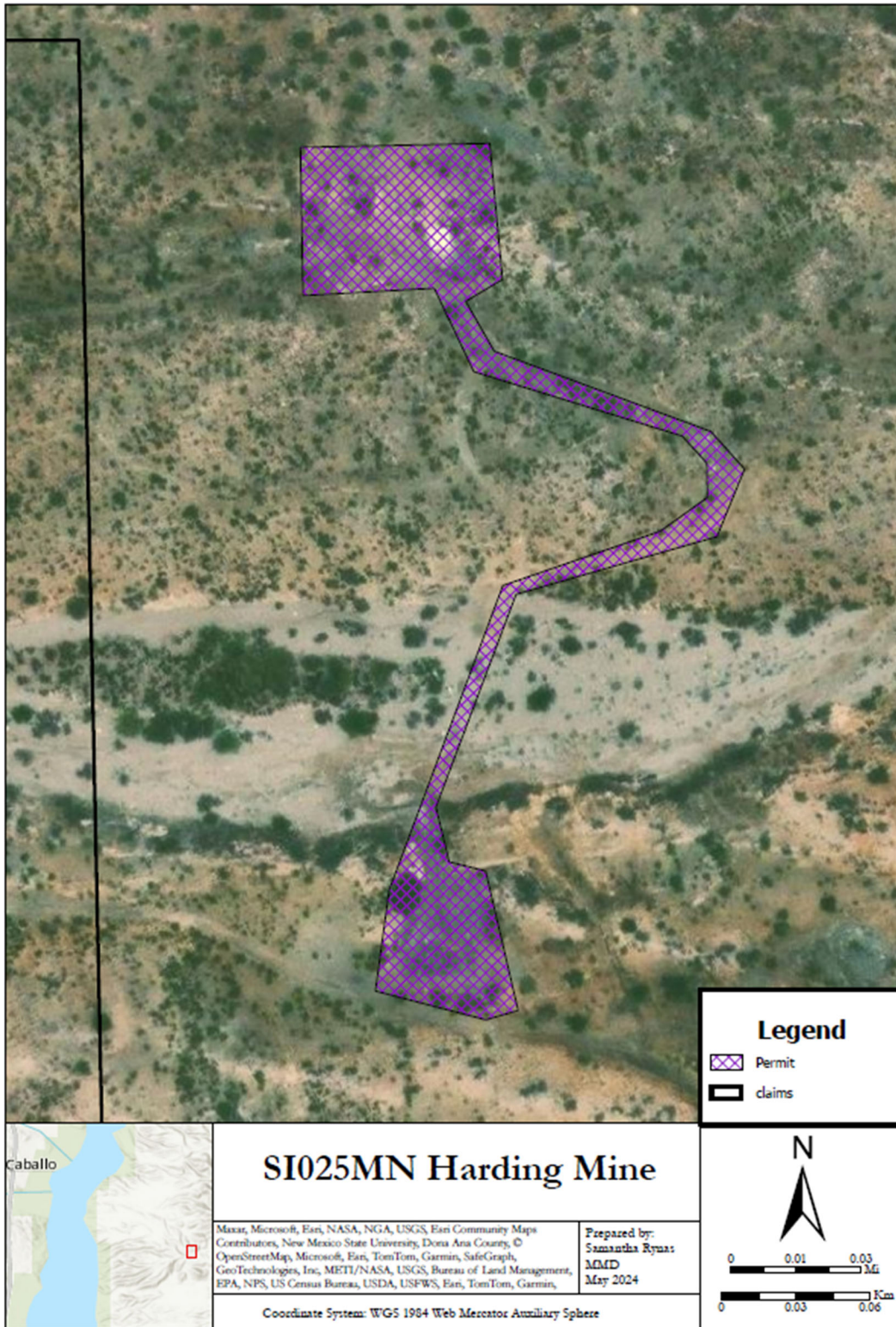
Samantha Rynas, Permit Lead
Mining Act Reclamation Program (MARP)
Mining and Minerals Division

CC: DJ Ennis, Program Manager, MARP/MMD
Clint Chisler, Reclamation Specialist Supervisor, MARP/MMD
Mine File (SI025MN)

RE: Request for Review and Comment on the Draft Baseline Data Report; La Jara Mesa Mine, Laramide Resources (USA) Inc., Permit No. CI008RN

September 19, 2024

Page 2



State of New Mexico
Energy, Minerals and Natural Resources Department

Michelle Lujan Grisham
Governor

Melanie A. Kenderdine
Cabinet Secretary-Designate

Benjamin Shelton
Acting Deputy Cabinet Secretary

Albert Chang, Director
Mining and Minerals Division



January 27, 2025

THPO Richard M. Begay
P.O. Box 4950
Window Rock, AZ 86515

RE: Request for Comments and Offer to Consult on on Modification 24-1 Harding Mine; Swani LLC., Permit No. SI025MN

Dear THPO Begay,

The Mining and Minerals Division (MMD) of the New Mexico Energy, Minerals, and Natural Resources Department has received an application from Sawni LLC. requesting a modification to the shaft closure and final release of the Harding Mine Permit (SI025MN) located Sierra County under 19.10.12.1210 NMAC of the New Mexico Mining Act (NMSA 1978, §69-36-1 et seq.).

The Harding Mine has already PUF plugged the shaft and removed the building from the site. The previous closure plan included tearing out the cement pad, however; the BLM has agreed to leaving this pad in place for closure. This site is located on BLM lands in the Caballo Mountains with-in Sierra County, New Mexico.

This notification of application is being submitted to you pursuant to the State Tribal Collaboration Act. MMD is requesting comments from you on any traditional, cultural and or religious properties that you would like MMD to take into consideration and is offering to consult with you on the application. Please see the attached map of the project vicinity. The application can be viewed in its entirety by visiting the MMD web site at;

[Harding Mine SI025MN - https://www.emnrd.nm.gov/mmd/harding-mine-si025mn/?et_fb=1&PageSpeed=off](https://www.emnrd.nm.gov/mmd/harding-mine-si025mn/?et_fb=1&PageSpeed=off) Mining and Minerals

Please provide any comments or request a formal consultation by March 1, 2025 If you wish to consult on this application or have any questions, please contact me at (505) 216-8945, or email samantha.rynas@emnrd.nm.gov.

Sincerely,

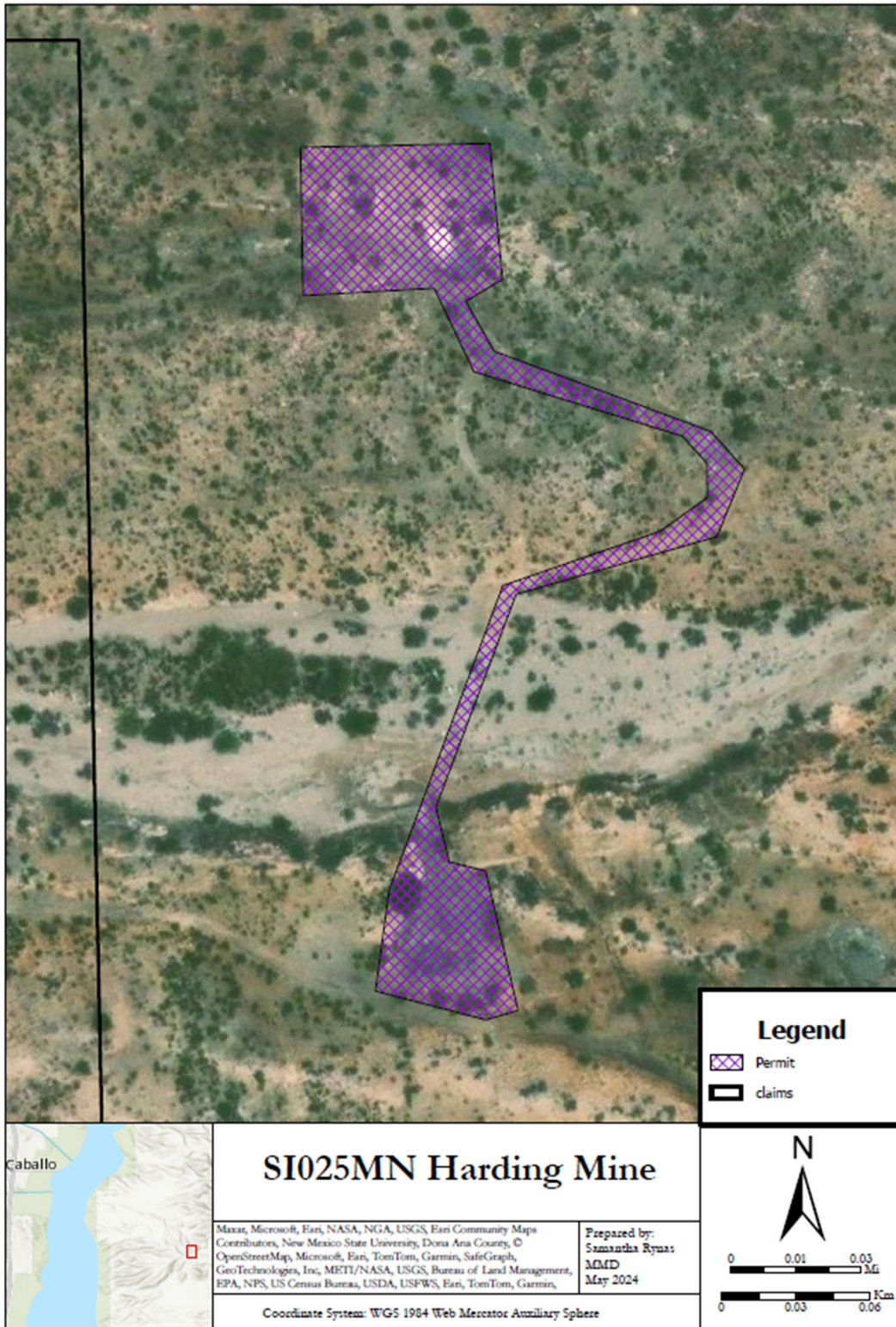
Samantha Rynas, Permit Lead
Mining Act Reclamation Program (MARP)
Mining and Minerals Division

CC: DJ Ennis, Program Manager, MARP/MMD
Clint Chisler, Reclamation Specialist Supervisor, MARP/MMD
Mine File (SI025MN)

RE: Request for Review and Comment on the Draft Baseline Data Report; La Jara Mesa Mine, Laramide Resources (USA) Inc., Permit No. CI008RN

September 19, 2024

Page 2



State of New Mexico
Energy, Minerals and Natural Resources Department

Michelle Lujan Grisham
Governor

Melanie A. Kenderdine
Cabinet Secretary-Designate

Benjamin Shelton
Acting Deputy Cabinet Secretary

Albert Chang, Director
Mining and Minerals Division



January 27, 2025

Chairman Timothy L. Nuvangyaoma
P.O. Box 123
Kykotsmovi, AZ 86039

RE: Request for Comments and Offer to Consult on on Modification 24-1 Harding Mine; Swani LLC., Permit No. SI025MN

Dear Chairman Nuvangyaoma,

The Mining and Minerals Division (MMD) of the New Mexico Energy, Minerals, and Natural Resources Department has received an application from Sawni LLC. requesting a modification to the shaft closure and final release of the Harding Mine Permit (SI025MN) located Sierra County under 19.10.12.1210 NMAC of the New Mexico Mining Act (NMSA 1978, §69-36-1 et seq.).

The Harding Mine has already PUF plugged the shaft and removed the building from the site. The previous closure plan included tearing out the cement pad, however; the BLM has agreed to leaving this pad in place for closure. This site is located on BLM lands in the Caballo Mountains with-in Sierra County, New Mexico.

This notification of application is being submitted to you pursuant to the State Tribal Collaboration Act. MMD is requesting comments from you on any traditional, cultural and or religious properties that you would like MMD to take into consideration and is offering to consult with you on the application. Please see the attached map of the project vicinity. The application can be viewed in its entirety by visiting the MMD web site at;

[Harding Mine SI025MN - https://www.emnrd.nm.gov/mmd/harding-mine-si025mn/?et_fb=1&PageSpeed=off](https://www.emnrd.nm.gov/mmd/harding-mine-si025mn/?et_fb=1&PageSpeed=off) Mining and Minerals

Please provide any comments or request a formal consultation by March 1, 2025 If you wish to consult on this application or have any questions, please contact me at (505) 216-8945, or email samantha.rynas@emnrd.nm.gov.

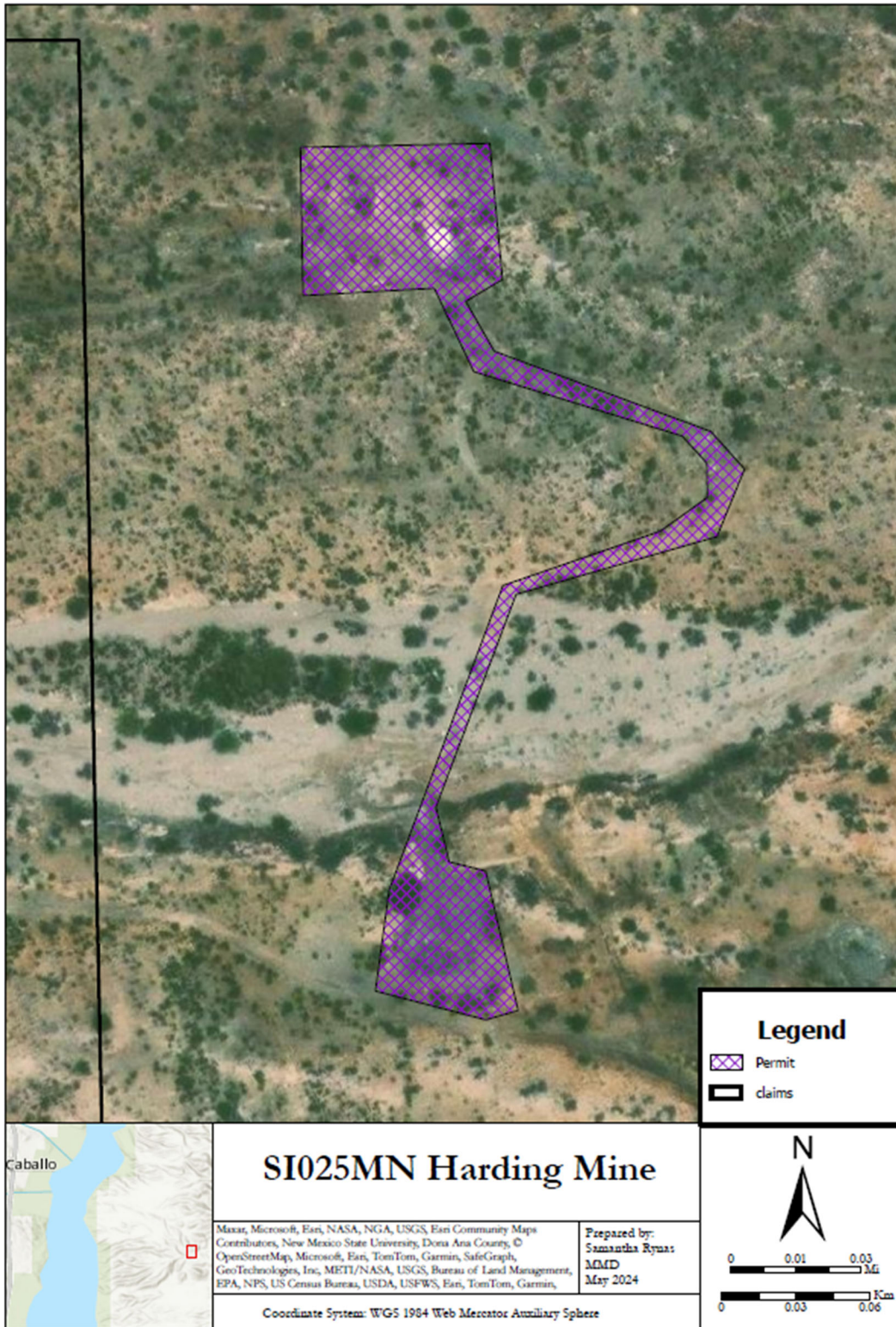
Sincerely,

Samantha Rynas, Permit Lead
Mining Act Reclamation Program (MARF)
Mining and Minerals Division

CC: DJ Ennis, Program Manager, MARF/MMD
Clint Chisler, Reclamation Specialist Supervisor, MARF/MMD
Mine File (SI025MN)

September 19, 2024

Page 2



State of New Mexico
Energy, Minerals and Natural Resources Department

Michelle Lujan Grisham
Governor

Melanie A. Kenderdine
Cabinet Secretary-Designate

Benjamin Shelton
Acting Deputy Cabinet Secretary

Albert Chang, Director
Mining and Minerals Division



January 27, 2025

Director Stewart Koyiyumptewa
P.O. Box 123
Kykotsmovi, AZ 86039

RE: Request for Comments and Offer to Consult on on Modification 24-1 Harding Mine; Swani LLC., Permit No. SI025MN

Dear Director Koyiyumptewa,

The Mining and Minerals Division (MMD) of the New Mexico Energy, Minerals, and Natural Resources Department has received an application from Sawni LLC. requesting a modification to the shaft closure and final release of the Harding Mine Permit (SI025MN) located Sierra County under 19.10.12.1210 NMAC of the New Mexico Mining Act (NMSA 1978, §69-36-1 et seq.).

The Harding Mine has already PUF plugged the shaft and removed the building from the site. The previous closure plan included tearing out the cement pad, however; the BLM has agreed to leaving this pad in place for closure. This site is located on BLM lands in the Caballo Mountains with-in Sierra County, New Mexico.

This notification of application is being submitted to you pursuant to the State Tribal Collaboration Act. MMD is requesting comments from you on any traditional, cultural and or religious properties that you would like MMD to take into consideration and is offering to consult with you on the application. Please see the attached map of the project vicinity. The application can be viewed in its entirety by visiting the MMD web site at;

[Harding Mine SI025MN - https://www.emnrd.nm.gov/mmd/harding-mine-si025mn/?et_fb=1&PageSpeed=off](https://www.emnrd.nm.gov/mmd/harding-mine-si025mn/?et_fb=1&PageSpeed=off) Mining and Minerals

Please provide any comments or request a formal consultation by March 1, 2025 If you wish to consult on this application or have any questions, please contact me at (505) 216-8945, or email samantha.rynas@emnrd.nm.gov.

Sincerely,

Samantha Rynas, Permit Lead
Mining Act Reclamation Program (MARP)
Mining and Minerals Division

CC: DJ Ennis, Program Manager, MARP/MMD
Clint Chisler, Reclamation Specialist Supervisor, MARP/MMD
Mine File (SI025MN)

RE: Request for Review and Comment on the Draft Baseline Data Report; La Jara Mesa Mine, Laramide Resources (USA) Inc., Permit No. CI008RN

September 19, 2024

Page 2

