



National Association of State Park Directors

*Statistical Report of
State Park Operations: 2019-2020*

Annual Information Exchange

for the Period of July 1, 2019 through June 30, 2020

Prepared for the National Association of State Park Directors by

AIX-Project Team

Yu-Fai Leung, Ph.D., Principal Investigator¹
Suet-Yi (Joey) Cheung, M.S., Project Assistant¹
Jordan Smith, Ph.D., Co-Investigator²

¹ Department of Parks, Recreation and Tourism Management
North Carolina State University
Raleigh, NC 27695

² Institute of Outdoor Recreation and Tourism, and
Department of Environment and Society
Utah State University
Logan, UT 84322

*Published under the direction of
The National Association of State Park Directors
PO Box 91567
Raleigh, NC 27675-1567
919-218-9222*

**May 2022
Volume 42**

To request copies, contact:
AIX Project Team
Department of Parks, Recreation and Tourism Management
NC State University
Box 8004, 4008 Biltmore Hall
Raleigh, NC 27695-8004
919-515-3276

May 2022
Volume 42

\$350 commercial - \$30 nonprofit and government agencies

AIX Project Website: <http://go.ncsu.edu/aix>
NASPD Website: <http://www.naspd.org>

Table of Contents

Preface	4
Report at a Glance	5
Introduction	6
Table 1: Inventory	7
Table 2: Facilities	12
Table 3A: Visitation and Use - Attendance	19
Table 3B: Visitation and Use – Overnight Visitation	21
Table 3C: Visitation and Use – Overnight Facility Utilization	22
Table 3D: Overnight Reservation System	26
Table 4: Capital Expenses	28
Table 5A: Financing – Operating Expenditures	30
Table 5B: Financing – Capital Expenditures	32
Table 5C: Financing – Parks’ Share of State Expenditures	34
Table 5D: Financing – User Fees	35
Table 5E: Financing – Revenue Sources	42
Table 5F: Financing – Revenue Sources	45
Table 6A: Personnel – Number of Positions	49
Table 6B: Personnel – Salaries	54
Table 6C: Personnel – Employee Benefits	57
Table 7: Supporting Group	58
Definitions	59

Preface



National Association of State Park Directors

P.O. Box 24114 Winston-Salem, NC 27114
(919) 218-9222 info@stateparks.org

www.stateparks.org



PREFACE

BOARD OF DIRECTORS

President

Lisa Sumption
OREGON

Vice President

Paul McCormack
SOUTH CAROLINA

Secretary-Treasurer

Rodney Franklin
TEXAS

Past President

Grady Spann
ARKANSAS

Greg Lein
ALABAMA

Terry Coleman
INDIANA

David Kelly
MISSOURI

Robert Mergell
NEVADA

John Hallas
PENNSYLVANIA

Nick Neylon
WYOMING

EXECUTIVE DIRECTOR

Lewis Ledford
NORTH CAROLINA (RET.)

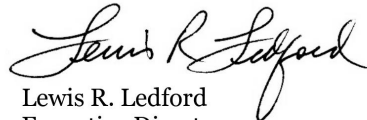
The COVID-19 Pandemic has delayed the data collection for this report in 2020 and 2021. In a few cases some of the data points were not reported. In those cases, for reference purposes the data from the previous year is shown in italics.

The AIX reports are designed and intended primarily for use by the state park directors and their staff for various purposes, such as identifying program, facility and personnel needs, formulating budgetary requests for state legislatures, and comparing their programs with those of the other states. For such “in-house” use, the reported data essentially speak for themselves and require little explanation or amplification. Over the years, however, state parks data published in the AIX have been increasingly requested, and presumably used, by a growing number of other individuals – in academic institutions, other governmental agencies, and business and industry. Because of these expanding external interests, it is important that the subject data first be adequately understood so they may be properly applied. For that reason, every effort has been made in compiling this report to provide guidance for the user, as well as to ensure accuracy and completeness of the data themselves.

Slight changes have been made in this report each year in format, organization and in the included subject matter. This current version contains the same types of information as in the past, presented in a manner intended to facilitate access and allow ready comparison with similar data for previous years. The State Operating Budget figures are retrieved from the State Expenditure Report published by the National Association of State Budget Officers (<http://www.nasbo.org/publications- data/state-expenditure- report/archives>).

It is recommended that all users of the data in this report, whether veteran park staffers or novices, first carefully review the accompanying definitions, notes and symbols to make sure they have the best possible understanding before making assumptions or drawing conclusions based on this data set. **Differing state statutes, regulations, and policies; variation in properties and assets between states; and dissimilar philosophies of acquisition, development, operations, and finance may impact comparisons.**

Sincerely,



Lewis R. Ledford
Executive Director

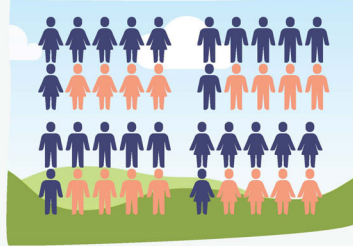
Promoting and advancing the state park systems of America for their own significance, as well as for their important contributions to the nation's environment, heritage, health and economy.

Report at a Glance

TOTAL VISITS

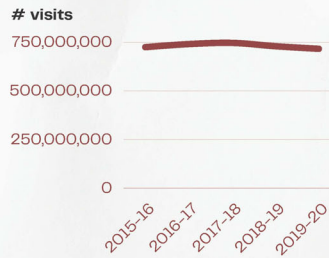
786,136,314

On 9,095 State Park Units
(> 19 million acres)



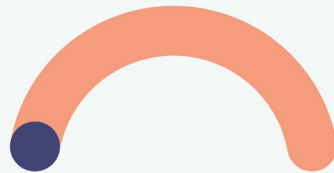
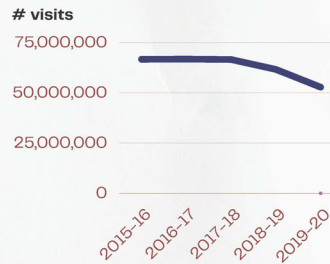
DAY USE

Since 2015



OVERNIGHT USE

Since 2015

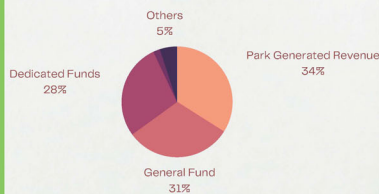


% OF STATE BUDGET

0.179%

OPERATING EXPENDITURES

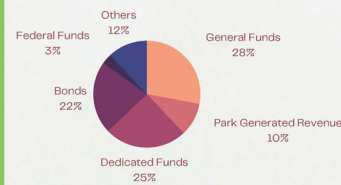
% by Sources of Funds



NATIONAL TOTAL:
\$3,412,038,448

CAPITAL EXPENDITURES

% by Sources of Funds



NATIONAL TOTAL:
\$1,350,373,711

Introduction

All data in this report are for the period between July 1, 2019 and June 30, 2020, or for the status as of that date, whichever is applicable. Please note that the title of this report has changed since 2009 to clearly reflect the time period covered by the data, not the year in which the report is published.

All data are provided by the state park agencies for their respective states. Where exact data are not collected by certain states, those states are requested to estimate as accurately as possible rather than omit responses altogether. If current year data were not provided by the state, prior year data were used and they are indicated in red color form. We deeply appreciate the steadfast support by all state park agencies, as well as the dedicated efforts by state liaisons in collecting and reporting their state's data, especially during the COVID-19 pandemic.

Reasonable efforts were made to ensure the accuracy and completeness of all reported data. For example, data entries were compared with previous year's data to identify unusual changes, and total values were checked for possible calculation errors. Apparent input errors were marked on the draft reports to facilitate review and correction by the states. For these and other possible errors, individual states were contacted to verify the data item(s) in question. We believe this error-checking process has resulted in a more accurate data set. However, users are advised to contact the individual states directly if further verification is desired.

This report contains only tabulated raw data. Analysis and interpretation is the responsibility of the individual user. While all of the fifty state park systems share common attributes, they nevertheless vary considerably from state to state. For this reason, total comparability among the reported data cannot be achieved. Effort has been made, however, to devise common denominators that will allow a useful degree of comparison. Users of these data should become familiar with the definitions and guidelines established for certain categories, as set forth below.

The following sections are organized by tables. Each 'table' covers a specific category of park operations data and corresponds to the respective webpage on the online survey. As each table/webpage has many columns they are broken down into several pages for display in report format. Each section starts with a brief introduction followed by the data tables. At the end of each table there are explanatory notes. Finally, definitions of terms are provided at the end of the report.

The information contained in this report represents the most current data submitted by the states at the time of publication. Updated data are available from the National Association of State Park Directors and the AIX Project Team.

**Table 1: Inventory
(page 1 of 5)**

Inventory pertains to the real property assets of a state park system, i.e. the various areas of land and water managed directly by the state parks agency. Inventory is measured in terms of number of areas and total acreage.

STATE	Parks			Recreation Areas			Natural Areas		
	Number	Number Operating	Acreage	Number	Number Operating	Acreage	Number	Number Operating	Acreage
Alabama	22	17	48,470	-	-	-	-	-	-
Alaska	48	48	2,998,258	80	80	337,874	1	1	49,320
Arizona	18	16	21,916	1	1	686	3	2	29,869
Arkansas	10	10	23,712	19	19	10,369	2	2	17,517
California	88	88	1,178,578	105	105	356,006	16	16	71,138
Colorado	42	41	229,576	1	1	5,356	106	95	214,760
Connecticut	45	45	23,737	-	-	-	49	49	11,080
Delaware	17	17	23,579	2	2	266	21	9	4,627
Florida	58	58	267,785	34	34	29,279	30	30	402,176
Georgia	48	48	78,840	-	-	-	-	-	-
Hawaii	17	17	29,013	10	10	1,393	13	13	2,252
Idaho	19	19	33,083	-	-	-	4	4	13,723
Illinois	44	44	80,423	22	22	62,371	117	117	52,071
Indiana	24	24	63,317	1	-	700	-	-	-
Iowa	59	59	42,547	12	12	14,445	-	-	-
Kansas	28	28	33,929	-	-	-	-	-	-
Kentucky	47	47	48,000	-	-	-	-	-	-
Louisiana	21	20	29,681	-	-	-	1	1	301
Maine	13	13	28,545	77	62	29,170	17	11	38,820
Maryland	75	75	141,180	-	-	-	-	-	-
Massachusetts	85	79	65,097	4	4	6,600	-	-	-
Michigan	72	72	195,529	22	22	104,422	4	4	409
Minnesota	66	66	258,263	9	9	25,640	-	-	-
Mississippi	25	24	22,920	-	-	-	1	1	700
Missouri	56	52	156,066	-	-	-	36	37	27,203
Montana	54	54	44,235	-	-	-	-	-	-
Nebraska	8	8	32,332	58	58	133,681	-	-	-
Nevada	13	13	87,413	6	6	57,699	-	-	-
New Hampshire	34	34	63,736	19	18	13,582	18	18	6,534
New Jersey	40	40	134,777	3	3	6,353	9	9	1,523
New Mexico	35	35	189,942	-	-	-	1	1	793
New York	188	188	344,952	52	52	14,605	247	247	2,972,192
North Carolina	35	34	172,241	4	4	13,256	24	3	32,322
North Dakota	13	13	14,224	7	7	3,230	7	7	4,481
Ohio	75	75	174,767	-	-	-	-	-	-
Oklahoma	28	27	59,976	3	3	1,017	1	1	640
Oregon	55	54	73,715	71	66	8,560	34	26	16,327
Pennsylvania	113	113	296,721	-	-	-	3	3	2,276
Rhode Island	32	32	8,200	9	9	-	14	14	230
South Carolina	41	41	77,948	-	-	-	-	-	-
South Dakota	13	13	77,264	43	43	14,757	5	5	2,477
Tennessee	40	40	185,535	-	-	-	5	5	24,454
Texas	73	72	524,093	-	-	-	9	6	108,649
Utah	45	45	150,648	2	2	290	-	-	-
Vermont	73	55	54,860	-	-	-	34	34	19,285
Virginia	39	39	74,687	-	-	-	-	-	-
Washington	90	90	85,969	-	-	-	-	-	-
West Virginia	24	24	80,337	-	-	-	2	2	262
Wisconsin	55	49	73,840	9	9	21,544	1	1	1,383
Wyoming	12	12	98,330	1	1	1,009	-	-	-
Total	2,275	2,227	9,302,786	686	664	1,274,159	835	774	4,129,793

**Table 1: Inventory
(page 2 of 5)**

STATE	Historical Areas			Environmental Education Areas			Scientific Areas		
	Number	Number Operating	Acreage	Number	Number Operating	Acreage	Number	Number Operating	Acreage
Alabama	-	-	-	-	-	-	-	-	-
Alaska	10	10	1,250	-	-	-	-	-	-
Arizona	9	9	4,545	2	2	4,456	-	-	-
Arkansas	19	19	2,790	1	1	370	-	-	-
California	53	53	32,632	-	-	-	-	-	-
Colorado	-	-	-	-	-	-	-	-	-
Connecticut	6	6	635	2	2	80	6	6	665
Delaware	2	2	403	-	-	-	-	-	-
Florida	19	19	5,172	-	-	-	-	-	-
Georgia	16	16	4,344	-	-	-	-	-	-
Hawaii	12	12	591	1	1	100	-	-	-
Idaho	5	5	11,514	-	-	-	-	-	-
Illinois	40	40	1,155	-	-	-	-	-	-
Indiana	2	2	104	-	-	-	-	-	-
Iowa	-	-	-	-	-	-	96	85	10,704
Kansas	-	-	-	-	-	-	-	-	-
Kentucky	-	-	-	-	-	-	-	-	-
Louisiana	17	14	2,497	-	-	-	-	-	-
Maine	25	22	512	-	-	-	-	-	-
Maryland	-	-	-	-	-	-	-	-	-
Massachusetts	62	62	19,065	3	3	2,710	2	2	5,168
Michigan	3	3	1,747	-	-	-	-	-	-
Minnesota	-	-	-	-	-	-	10	10	2,651
Mississippi	-	-	-	-	-	-	-	-	-
Missouri	35	36	3,541	-	-	-	-	-	-
Montana	-	-	-	-	-	-	-	-	-
Nebraska	10	10	2,497	-	-	-	-	-	-
Nevada	5	5	6,026	-	-	-	1	1	315
New Hampshire	17	18	1,136	1	1	334	-	-	-
New Jersey	20	20	65	1	1	874	-	-	-
New Mexico	1	1	1,608	-	-	-	-	-	-
New York	40	40	4,564	4	4	2,509	1	1	23
North Carolina	-	-	-	-	-	-	-	-	-
North Dakota	1	1	15	-	-	-	-	-	-
Ohio	-	-	-	-	-	-	-	-	-
Oklahoma	-	-	-	-	-	-	-	-	-
Oregon	14	14	1,413	-	-	-	-	-	-
Pennsylvania	1	1	480	4	4	4,748	-	-	-
Rhode Island	6	6	133	-	-	-	-	-	-
South Carolina	16	16	3,958	-	-	-	-	-	-
South Dakota	1	1	318	-	-	-	-	-	-
Tennessee	11	11	6,785	-	-	-	-	-	-
Texas	5	5	4,458	-	-	-	-	-	-
Utah	3	3	574	3	3	-	14	14	-
Vermont	-	-	-	1	1	10	-	-	-
Virginia	-	-	-	-	-	-	-	-	-
Washington	23	18	7,455	-	-	-	-	-	-
West Virginia	9	9	2,767	-	-	-	-	-	-
Wisconsin	-	-	-	2	2	329	-	-	-
Wyoming	39	24	2,972	-	-	-	-	-	-
Total	557	533	139,720	25	25	16,520	130	119	19,526

**Table 1: Inventory
(page 3 of 5)**

STATE	Forests			Fish & Wildlife Areas			Other & Misc. Areas		
	Number	Operating	Acreage	Number	Operating	Acreage	Number	Operating	Acreage
Alabama	-	-	-	-	-	-	-	-	-
Alaska	-	-	-	-	-	-	-	-	-
Arizona	-	-	-	-	-	-	1	1	322
Arkansas	-	-	-	-	-	-	1	1	12
California	-	-	-	2	-	-	16	16	10,596
Colorado	-	-	-	356	356	683,412	250	250	335,135
Connecticut	32	32	175,682	-	-	-	2	2	432
Delaware	-	-	-	-	-	-	-	-	-
Florida	-	-	-	3	3	327	20	20	17,969
Georgia	-	-	-	-	-	-	-	-	-
Hawaii	-	-	-	1	1	TBD	7	7	113
Idaho	-	-	-	-	-	-	4	1	602
Illinois	6	6	20,803	67	67	25,243	86	86	22,621
Indiana	-	-	-	-	-	-	8	8	107,418
Iowa	10	10	44,783	-	-	-	20	20	3,800
Kansas	-	-	-	-	-	-	22	22	131,075
Kentucky	-	-	-	-	-	-	-	-	-
Louisiana	-	-	-	-	-	-	-	-	-
Maine	-	-	-	7	7	2,099	-	-	-
Maryland	-	-	-	-	-	-	-	-	-
Massachusetts	96	96	244,778	1	1	1,158	86	70	9,313
Michigan	-	-	-	-	-	-	140	140	2,117
Minnesota	62	62	-	-	-	-	1,529	1,529	2,294
Mississippi	-	-	-	-	-	-	-	-	-
Missouri	-	-	-	12	12	24,241	1	1	732
Montana	-	-	-	-	-	-	-	-	-
Nebraska	-	-	-	-	-	-	-	-	-
Nevada	-	-	-	-	-	-	-	-	-
New Hampshire	-	-	-	-	-	-	2	2	146,308
New Jersey	11	11	257,857	122	122	357,000	32	32	53,563
New Mexico	-	-	-	-	-	-	-	-	-
New York	449	449	792,868	288	288	206,829	208	208	10,587
North Carolina	-	-	-	-	-	-	11	-	31,393
North Dakota	3	3	13,000	-	-	-	1	1	60
Ohio	-	-	-	-	-	-	-	-	-
Oklahoma	-	-	-	-	-	-	-	-	-
Oregon	-	-	-	-	-	-	80	53	22,833
Pennsylvania	-	-	-	-	-	-	-	-	-
Rhode Island	-	-	-	-	-	-	9	9	-
South Carolina	-	-	-	-	-	-	-	-	-
South Dakota	-	-	-	-	-	-	69	69	7,336
Tennessee	-	-	-	-	-	-	-	-	-
Texas	-	-	-	-	-	-	-	-	-
Utah	-	-	-	-	-	-	3	3	2,233
Vermont	-	-	-	-	-	-	-	-	-
Virginia	-	-	-	-	-	-	7	1	5,065
Washington	-	-	-	-	-	-	90	89	17,395
West Virginia	9	9	68,044	-	-	-	-	-	-
Wisconsin	8	8	58,833	-	-	-	617	617	291,516
Wyoming	-	-	-	-	-	-	-	-	-
Total	686	686	1,676,648	859	857	1,300,309	3,322	3,258	1,232,839

**Table 1: Inventory
(page 4 of 5)**

STATE	Total Areas			Total Trails		
	Number	Number Operating	Acreage	Number	Number Operating	Miles
Alabama	22	17	48,470	121	110	195
Alaska	139	139	3,386,702	102	102	550
Arizona	34	31	61,794	160	160	140
Arkansas	52	52	54,770	219	463	452
California	280	278	1,648,950	-	-	-
Colorado	755	743	1,468,239	446	-	667
Connecticut	142	142	212,311	6	6	95
Delaware	42	30	28,875	64	64	183
Florida	164	164	722,708	11	11	2,200
Georgia	64	64	83,184	384	384	712
Hawaii	61	61	33,462	28	-	80
Idaho	32	29	58,922	3	3	108
Illinois	382	382	264,687	7	7	536
Indiana	35	34	171,539	-	-	-
Iowa	197	186	116,279	1	1	6
Kansas	50	50	165,004	85	85	-
Kentucky	47	47	48,000	300	300	330
Louisiana	39	35	32,479	69	66	191
Maine	139	115	99,146	14	14	333
Maryland	75	75	141,180	594	594	1,134
Massachusetts	339	317	353,889	35	35	3,261
Michigan	241	241	304,224	50	50	964
Minnesota	1,676	1,676	288,848	30	30	1,506
Mississippi	26	25	23,620	18	18	100
Missouri	53	90	160,340	268	268	1,087
Montana	54	54	44,235	-	-	-
Nebraska	76	76	168,510	2	2	324
Nevada	25	25	151,453	114	114	290
New Hampshire	91	91	231,630	131	131	8,400
New Jersey	238	238	812,012	470	470	1,068
New Mexico	37	37	192,343	61	61	144
New York	1,477	1,477	4,349,130	2,599	2,599	5,235
North Carolina	74	41	249,212	9	-	945
North Dakota	32	32	35,010	36	36	3,252
Ohio	75	75	174,767	591	591	1,057
Oklahoma	32	31	61,633	37	37	402
Oregon	254	213	122,847	6	6	571
Pennsylvania	121	121	304,225	1,022	1,022	1,532
Rhode Island	70	70	8,563	4	4	400
South Carolina	57	57	81,906	191	191	449
South Dakota	131	131	102,151	1	1	114
Tennessee	56	56	216,774	513	513	1,370
Texas	87	83	637,200	4	4	108
Utah	70	70	153,745	-	-	-
Vermont	108	90	74,155	47	47	258
Virginia	46	40	79,752	473	473	678
Washington	203	197	110,819	5	5	513
West Virginia	44	44	151,410	363	363	1,280
Wisconsin	692	686	447,445	44	44	2,591
Wyoming	52	37	102,311	188	188	163
Total	9,288	9,095	19,040,859	9,926	9,673	45,973

Table 1: Inventory
(page 5 of 5)
Explanatory Notes

STATE	NOTES
Arizona	Trails within the boundaries of State Parks are included, including intersecting trails. Lime Kiln and 50 year trail areas that intersect with parks are included. (Removed Spur Cross Ranch from 'Other areas')
Arkansas	Added .170 acre lot to Jacksonport State Park.
California	Table 1.8: The two Fish and Wildlife Areas are Emeryville Crescent State Marine Reserve and Albany State Marine Reserve. They are both located on the San Francisco bay and are separated by the McLaughlin Eastshore State Park (State Seashore). The two state marine reserves are entirely off shore and contain no coastal acreage.
Colorado	Colorado does not have state-managed trails outside of the state park and wildlife area systems.
Connecticut	Trails = State Park rail trails
Delaware	some roads now designated as trails
Florida	Total areas in system increase and decrease due to reclassification of units and change in acreage numbers within the jurisdiction report as a result of leasing lands.
Hawaii	The addition to the Fish and Wildlife section is a Marine Life Conservation Area cutout of one of our existing areas. No acreage available
Indiana	2019/2020 no new acreage purchased this fiscal year.
Massachusetts	The trails included are from major trail systems. This does not include the thousands of miles of trails within our park system.
Michigan	Scenic Sites includes Douglas Houghton Falls Scenic Site. Trails calculated as uniquely named state-designated rail trails/linear trail segments that are open to non-motorized use (including trail open to both non-motorized and motorized use) and including 5 linear state parks.
Missouri	Viney Creek Rec Area - relinquished late 2019 to USACE. Fish and Wildlife Areas represent Wild Areas. Other includes Roger Pryor Backcountry. There is a total of 93 parks and historic sites in our system; MSP operates 90.
New Hampshire	1.1 acres added to Livermore Falls
New York	Table 1 Inventory contains data from both the New York State Office of Parks, Recreation and Historic Preservation (OPRHP) and the New York State Department of Environmental Conservation (DEC). DEC's Area/System counts are generally lower compared to the previous year to better adhere to the AIX definition. NYS OPRHP Historic Areas and State Parks acreage is calculated through 3/31/20. OPRHP miles are lower than FY 2018 because of an adjustment from the proposed route for the Empire State Trail (EST) to the official actual ground route. The EST is a 750 mile multi-purpose outdoor recreation route that goes from NYC to the Canadian border and extends west from Albany to Buffalo. NYS information is from 4/1/19-3/31/20, which was not impacted by the COVID-19 Pandemic.
Oklahoma	Increase due to land at Little Sahara
Oregon	State Recreation Areas = SRA/SRS Natural Areas = SNA/SNS Historic Areas = SHS/SHA Other & Miscellaneous includes Scenic Viewpoints, Waysides, Scenic Corridors, etc. Trail info provided by David Quillin GIS Specialist. "Operational" determined through use of the OPRIS asset management system. This is the best available acreage estimate. Miles of Total Trails incorporates newly completed segments of the Oregon Coast Trail.
Pennsylvania	We continue to GPS our trails when time permits. We continue to close private/social trails as well as making improvements to other trails.
Rhode Island	RI Parks conducted an analysis of properties in 2020 resulting in reclassification of some properties, removal of some under other jurisdiction, and classification of several areas as Recreational Areas, including Lincoln Woods Boating Center, Lincoln Woods Equestrian Center, Coggeshall Farm Museum, Beavertail Aquarium, Beavertail Lighthouse Museum, Goddard Park Golf Course, Goddard Riding Stables, and Camp Pastore/Pastore Leisure Center. We have not updated acreage as that part of the analysis is still in process.
Texas	Does not include Powderhorn as it will be officially added in 2021
Vermont	** Trails info provided by Recreational Trails Program Manager Sherry Winnie. No new trails built due to COVID-19. **Information on # of areas, acreage, natural areas/ acreage provided by Niels Rinehart, Lands Administration & Records Coordinator.
Washington	Increase in total acres of 193 acres due to large new property acquired in Moran State Park (+134 acres) and Penrose Point (+3 acres), and a 40.54 acre. Correction to the tabulation of Cape Disappointment from last year, and corrections in the GIS representation to various other properties. Seventeen miles of new long-distance trails due to acquisition of new Palouse to Cascades trail between the Columbia River and Royal City. 6 Heritage sites are considered to be non-operational (Colbert House, Monticello Convention Site, Ranald McDonalds, Willie Keil, Steptoe Butte, and Spokane Plains. Completed further review of the operational status of park prosperities based on the updated definition which resulted in fewer Operational areas. Total areas for FY19 should have read as 204, not 203.
Wyoming	All types of non-motorized trails included in calcs. Proposed trails not included. Number operating is trails (by name) quantity per park/site.

**Table 2: Facilities
(page 1 of 7)**

This report tabulates the number of separate state park areas offering such facilities, as well as the total number of such facilities, broken down by year-around and seasonal availability. States that provided “0” or no data are excluded from averages. To be included the facilities must be owned by the state and either self operated or concession or lease operated by private business. Facilities may also be included which are owned privately and operated by the state. Facilities which are neither state owned nor state operated may not be included, regardless of whether access to such facilities crosses park lands or not.

STATE	Improved Campsites				Primitive Campsites			
	Areas	Number of Year Round	Seasonal	Total	Areas	Number of Year Round	Seasonal	Total
Alabama	17	2,491	-	2,491	17	512	-	512
Alaska	-	-	-	-	61	-	2,510	2,510
Arizona	16	1,207	-	1,207	11	300	-	300
Arkansas	35	1,474	-	1,474	20	235	-	235
California	87	11,597	1,350	12,947	62	2,561	650	3,211
Colorado	32	2,052	2,245	4,297	10	161	72	233
Connecticut	11	-	1,179	1,179	4	-	133	133
Delaware	5	399	427	826	7	21	-	21
Florida	53	3,306	-	3,306	56	520	-	520
Georgia	38	1,907	-	1,907	23	253	-	253
Hawaii	11	89	-	89	2	9	-	9
Idaho	17	1,438	399	1,837	4	158	4	162
Illinois	56	7,594	-	7,594	83	2,149	-	2,149
Indiana	30	7,122	-	7,122	11	589	-	589
Iowa	50	14	3,866	3,880	12	540	-	540
Kansas	79	3,199	1,273	4,472	46	3,305	367	3,672
Kentucky	28	509	1,654	2,163	23	90	341	431
Louisiana	20	1,415	-	1,415	10	333	-	333
Maine	9	-	846	846	8	-	489	489
Maryland	20	459	1,807	2,266	3	50	-	50
Massachusetts	21	-	3,221	3,221	6	-	111	111
Michigan	65	1,424	11,380	12,804	166	2,011	2,094	4,105
Minnesota	65	1,119	3,220	4,339	80	213	570	783
Mississippi	21	1,443	-	1,443	16	340	-	340
Missouri	42	2,954	755	3,709	9	59	-	59
Montana	18	294	82	376	23	385	163	548
Nebraska	41	3,754	-	3,754	62	4,696	-	4,696
Nevada	14	538	401	939	16	839	960	1,799
New Hampshire	15	10	1,267	1,277	6	146	100	246
New Jersey	15	505	1,126	1,631	12	70	229	299
New Mexico	63	2,144	2,192	4,336	51	1,780	2,529	4,309
New York	116	-	20,195	20,195	2,056	2,077	15	2,092
North Carolina	34	846	1,903	2,749	23	315	49	364
North Dakota	13	1,145	-	1,145	13	-	252	252
Ohio	-	8,987	180	9,167	3	150	-	150
Oklahoma	32	2,622	1,046	3,668	32	2,346	1,139	3,485
Oregon	43	3,056	2,122	5,178	18	99	222	321
Pennsylvania	49	87	5,764	5,851	12	22	342	364
Rhode Island	1	-	147	147	4	-	880	880
South Carolina	33	1,825	752	2,577	28	200	159	359
South Dakota	38	3,168	840	4,008	4	304	-	304
Tennessee	39	3,335	-	3,335	24	284	-	284
Texas	75	5,839	395	6,234	39	1,226	-	1,226
Utah	56	256	1,227	1,483	47	85	595	680
Vermont	39	-	2,102	2,102	9	-	99	99
Virginia	23	96	1,728	1,824	12	113	-	113
Washington	74	2,991	2,878	5,869	23	326	160	486
West Virginia	28	166	1,303	1,469	6	14	121	135
Wisconsin	41	161	1,592	1,753	56	787	3,881	4,668
Wyoming	10	257	-	257	10	1,490	-	1,490
Total	1,738	95,294	82,864	178,158	3,339	32,163	19,236	51,399
Average	36	2,216	2,368	3,636	67	748	663	1,028

**Table 2: Facilities
(page 2 of 7)**

STATE	Cabins/Cottages				Group Facilities			
	Areas	Year Round	Seasonal	Total	Areas	Year Round	Seasonal	Total
Alabama	10	205	-	205	2	2	-	2
Alaska	26	83	6	89	-	-	-	-
Arizona	7	44	-	44	8	20	-	20
Arkansas	15	222	-	222	3	3	-	3
California	21	244	38	282	6	311	102	413
Colorado	11	65	10	75	12	27	8	35
Connecticut	8	-	38	38	-	-	-	-
Delaware	5	45	2	47	1	1	2	3
Florida	18	196	-	196	3	3	-	3
Georgia	30	424	-	424	11	35	-	35
Hawaii	4	23	-	23	5	6	-	6
Idaho	13	58	5	63	2	4	-	4
Illinois	20	41	-	41	1	3	-	3
Indiana	11	55	150	205	6	2	4	6
Iowa	21	70	52	122	2	-	2	2
Kansas	21	117	4	121	1	-	1	1
Kentucky	17	323	-	323	16	16	-	16
Louisiana	17	210	-	210	10	11	-	11
Maine	-	-	-	-	-	-	-	-
Maryland	29	64	80	144	19	14	54	68
Massachusetts	11	-	52	52	1	-	1	1
Michigan	50	133	36	169	-	225	-	225
Minnesota	31	81	87	168	8	1	8	9
Mississippi	19	254	-	254	6	6	-	6
Missouri	16	75	134	209	7	1	12	13
Montana	11	3	8	11	8	1	13	14
Nebraska	10	105	138	243	2	2	-	2
Nevada	2	5	-	5	-	-	-	-
New Hampshire	8	5	45	50	-	-	-	-
New Jersey	10	9	73	82	3	1	3	4
New Mexico	1	3	-	3	26	40	-	40
New York	77	510	1,426	1,936	4	-	31	31
North Carolina	7	37	8	45	4	14	60	74
North Dakota	10	16	35	51	1	1	-	1
Ohio	17	513	-	513	6	4	2	6
Oklahoma	16	312	-	312	11	-	11	11
Oregon	32	278	14	292	1	1	1	2
Pennsylvania	44	209	209	418	5	-	12	12
Rhode Island	1	-	20	20	-	-	-	-
South Carolina	18	150	8	158	7	5	3	8
South Dakota	39	199	231	430	-	-	-	-
Tennessee	21	352	20	372	13	10	11	21
Texas	41	637	-	637	60	152	-	152
Utah	12	55	10	65	6	2	4	6
Vermont	16	-	61	61	-	-	-	-
Virginia	20	359	-	359	23	2	27	29
Washington	29	146	11	157	10	11	2	13
West Virginia	19	103	230	333	3	-	3	3
Wisconsin	10	-	10	10	4	4	1	5
Wyoming	6	24	-	24	1	-	1	1
Total	908	7,062	3,251	10,313	328	941	379	1,320
Average	19	161	102	210	8	28	15	31

**Table 2: Facilities
(page 3 of 7)**

STATE	Lodges			Lodge Rooms			
	Areas	Number of Year Round	Seasonal	Total	Number of Year Round	Seasonal	Total
Alabama	5	5	-	5	343	-	343
Alaska	-	-	-	-	-	-	-
Arizona	-	-	-	-	-	-	-
Arkansas	4	4	-	4	218	-	218
California	7	7	-	7	480	-	480
Colorado	-	-	-	-	-	-	-
Connecticut	-	-	-	-	-	-	-
Delaware	-	-	-	-	-	-	-
Florida	1	1	-	1	27	-	27
Georgia	-	-	-	-	-	-	-
Hawaii	-	-	-	-	-	-	-
Idaho	1	1	-	1	-	10	10
Illinois	7	7	-	7	33,124	271	33,395
Indiana	7	7	-	7	592	56	648
Iowa	1	1	-	1	105	-	105
Kansas	-	-	-	-	-	-	-
Kentucky	17	17	-	17	890	-	890
Louisiana	8	15	-	15	16	-	16
Maine	-	-	-	-	-	-	-
Maryland	-	-	-	-	-	-	-
Massachusetts	-	-	-	-	-	-	-
Michigan	1	1	-	1	67	-	67
Minnesota	1	-	1	1	-	7	7
Mississippi	3	3	-	3	45	-	45
Missouri	4	2	2	4	38	110	148
Montana	-	-	-	-	-	-	-
Nebraska	2	1	1	2	40	22	62
Nevada	-	-	-	-	-	-	-
New Hampshire	-	-	-	-	-	-	-
New Jersey	-	-	-	-	-	-	-
New Mexico	-	-	-	-	-	-	-
New York	4	3	1	4	192	22	214
North Carolina	1	4	-	4	47	-	47
North Dakota	-	-	-	-	-	-	-
Ohio	9	9	-	9	793	-	793
Oklahoma	5	5	-	5	218	-	218
Oregon	3	2	1	3	-	-	-
Pennsylvania	2	1	1	2	16	20	36
Rhode Island	-	-	-	-	-	-	-
South Carolina	1	1	-	1	58	19	77
South Dakota	5	3	4	7	38	122	160
Tennessee	4	4	-	4	351	-	351
Texas	1	1	-	1	39	-	39
Utah	-	-	-	-	-	-	-
Vermont	1	-	1	1	-	8	8
Virginia	-	-	-	-	-	-	-
Washington	-	-	-	-	-	-	-
West Virginia	12	11	1	12	769	30	799
Wisconsin	-	-	-	-	-	-	-
Wyoming	-	-	-	-	-	-	-
Total	117	116	13	129	38,506	697	39,203
Average	4	5	1	5	1,674	58	1,508

**Table 2: Facilities
(page 4 of 7)**

STATE	Restaurants				Golf Facilities/Number of Courses & Holes							
	Areas	Number of Year Round	Seasonal	Total	Areas	Number of Year Round	Seasonal	Total Courses	Year Round Holes	Seasonal Holes	Total Holes	
Alabama	5	6	-	6	3	3	-	3	54	-	54	
Alaska	1	-	1	1	-	-	-	-	-	-	-	
Arizona	-	-	-	-	-	-	-	-	-	-	-	
Arkansas	8	6	2	8	2	2	-	2	45	-	45	
California	14	14	-	14	3	2	1	3	27	18	45	
Colorado	-	-	-	-	-	-	-	-	-	-	-	
Connecticut	-	-	-	-	-	-	-	-	-	-	-	
Delaware	2	1	2	3	2	2	-	2	36	-	36	
Florida	34	34	-	34	1	1	-	1	9	-	9	
Georgia	-	-	-	-	5	5	-	5	90	-	90	
Hawaii	1	1	1	2	-	-	-	-	-	-	-	
Idaho	-	-	-	-	-	-	-	-	-	-	-	
Illinois	24	7	17	24	2	1	1	2	18	18	36	
Indiana	7	7	-	7	1	-	1	1	-	18	18	
Iowa	1	1	-	1	1	-	1	1	-	18	18	
Kansas	3	2	1	3	1	1	-	1	-	-	-	
Kentucky	17	17	-	17	13	13	-	13	225	-	225	
Louisiana	1	1	-	1	1	1	-	1	18	-	18	
Maine	-	-	-	-	-	-	-	-	-	-	-	
Maryland	-	-	-	-	-	-	-	-	-	-	-	
Massachusetts	-	-	-	-	2	-	2	2	-	-	-	
Michigan	1	1	-	1	1	-	1	1	-	5	5	
Minnesota	2	-	2	2	-	-	-	-	-	-	-	
Mississippi	-	-	-	-	4	4	-	4	63	-	63	
Missouri	11	2	9	11	-	-	-	-	-	-	-	
Montana	-	-	-	-	-	-	-	-	-	-	-	
Nebraska	3	1	2	3	-	-	-	-	-	-	-	
Nevada	-	-	-	-	-	-	-	-	-	-	-	
New Hampshire	-	-	-	-	-	-	-	-	-	-	-	
New Jersey	16	3	16	19	4	-	-	4	-	-	-	
New Mexico	2	2	2	4	-	-	-	-	-	-	-	
New York	18	10	13	23	19	4	22	26	144	270	414	
North Carolina	2	1	1	2	-	-	-	-	-	-	-	
North Dakota	-	-	-	-	-	-	-	-	-	-	-	
Ohio	11	11	-	11	5	-	5	5	-	90	90	
Oklahoma	6	4	2	6	7	7	-	7	117	-	117	
Oregon	2	1	1	2	-	-	-	-	-	-	-	
Pennsylvania	-	-	-	-	2	-	2	2	-	36	36	
Rhode Island	-	-	-	-	1	-	1	1	-	9	9	
South Carolina	1	1	-	1	2	2	-	2	36	-	36	
South Dakota	6	-	9	9	-	-	-	-	-	-	-	
Tennessee	10	9	1	10	9	9	-	9	162	-	162	
Texas	1	1	-	1	1	1	-	1	9	-	9	
Utah	-	-	-	-	4	1	3	4	9	90	99	
Vermont	-	-	-	-	-	-	-	-	-	-	-	
Virginia	1	-	1	1	-	-	-	-	-	-	-	
Washington	5	6	1	7	3	2	-	2	-	-	27	
West Virginia	12	8	4	12	5	4	1	5	81	108	189	
Wisconsin	2	-	2	2	2	-	2	2	-	27	27	
Wyoming	3	1	2	3	-	-	-	-	-	-	-	
Total	233	159	92	251	106	65	43	112	1,143	707	1,877	
Average	7	6	4	8	4	3	3	4	67	59	75	

**Table 2: Facilities
(page 5 of 7)**

STATE	Marinas				Swimming Pools			
	Areas	Number of Year Round	Seasonal	Total	Areas	Number of Year Round	Seasonal	Total
Alabama	4	4	-	4	7	-	7	7
Alaska	-	-	-	-	-	-	-	-
Arizona	-	-	-	-	-	-	-	-
Arkansas	11	7	3	10	11	1	10	11
California	7	7	1	8	3	2	1	3
Colorado	10	6	5	11	-	-	-	-
Connecticut	1	-	1	1	1	-	2	2
Delaware	2	2	-	2	1	-	1	1
Florida	8	9	-	9	4	4	-	4
Georgia	3	3	-	3	3	-	3	3
Hawaii	1	1	1	2	-	-	-	-
Idaho	4	2	2	4	-	-	-	-
Illinois	2	1	1	2	2	-	2	2
Indiana	8	4	13	17	13	5	12	17
Iowa	1	-	1	1	1	1	1	2
Kansas	15	8	7	15	-	-	-	-
Kentucky	16	7	9	16	25	2	-	2
Louisiana	1	1	-	1	4	-	4	4
Maine	-	-	-	-	-	-	-	-
Maryland	4	4	4	8	2	-	2	2
Massachusetts	-	-	-	-	37	-	37	37
Michigan	19	-	19	19	-	-	-	-
Minnesota	2	-	2	2	2	-	2	2
Mississippi	2	2	-	2	5	-	5	5
Missouri	7	-	7	7	6	-	6	6
Montana	2	1	1	2	-	-	-	-
Nebraska	1	-	-	-	5	-	5	5
Nevada	-	-	-	-	-	-	-	-
New Hampshire	-	-	-	-	-	-	-	-
New Jersey	6	6	-	6	-	-	-	-
New Mexico	7	4	3	7	-	-	-	-
New York	24	-	24	24	16	1	33	34
North Carolina	5	5	-	5	2	-	2	2
North Dakota	3	-	3	3	-	-	-	-
Ohio	44	-	44	44	12	9	11	20
Oklahoma	14	12	2	14	11	-	11	11
Oregon	3	-	3	3	1	-	1	1
Pennsylvania	11	-	11	11	15	-	15	15
Rhode Island	1	1	-	1	-	-	-	-
South Carolina	2	2	-	2	1	-	1	1
South Dakota	8	-	10	10	-	-	-	-
Tennessee	7	7	-	7	18	1	18	19
Texas	1	1	-	1	6	2	4	6
Utah	5	2	3	5	-	-	-	-
Vermont	1	-	1	1	1	-	-	-
Virginia	2	1	1	2	5	-	5	5
Washington	5	4	1	5	1	-	1	1
West Virginia	3	1	2	3	18	4	14	18
Wisconsin	3	-	3	3	1	-	1	1
Wyoming	3	-	3	3	1	8	6	14
Total	289	115	191	306	241	40	223	263
Average	7	4	6	7	7	3	7	8

**Table 2: Facilities
(page 6 of 7)**

STATE	Stables				Ski Slopes			
	Areas	Number of Year Round	Seasonal	Total	Areas	Number of Year Round	Seasonal	Total
Alabama	1	1	-	1	1	-	-	1
Alaska	-	-	-	-	1	-	-	1
Arizona	2	2	-	2	-	-	-	-
Arkansas	4	1	3	4	-	-	-	-
California	1	1	-	1	1	-	1	1
Colorado	4	4	-	4	-	-	-	-
Connecticut	-	-	-	-	1	-	26	26
Delaware	2	2	-	2	-	-	-	-
Florida	7	7	-	7	-	-	-	-
Georgia	3	82	-	82	-	-	-	-
Hawaii	-	-	-	-	-	-	-	-
Idaho	-	-	-	-	-	-	-	-
Illinois	4	-	4	4	1	-	1	1
Indiana	6	-	6	6	-	-	-	-
Iowa	-	-	-	-	-	-	-	-
Kansas	-	-	-	-	-	-	-	-
Kentucky	2	-	2	2	-	-	-	-
Louisiana	-	-	-	-	-	-	-	-
Maine	-	-	-	-	-	-	-	-
Maryland	-	-	-	-	-	-	-	-
Massachusetts	1	-	1	1	-	-	-	-
Michigan	4	2	2	4	1	-	1	1
Minnesota	-	-	-	-	-	-	-	-
Mississippi	1	1	-	1	-	-	-	-
Missouri	-	-	-	-	-	-	-	-
Montana	-	-	-	-	-	-	-	-
Nebraska	12	-	12	12	-	-	-	-
Nevada	-	-	-	-	-	-	-	-
New Hampshire	-	-	-	-	-	-	-	-
New Jersey	-	-	-	-	-	-	-	-
New Mexico	1	5	-	5	-	-	-	-
New York	2	-	2	2	-	-	-	-
North Carolina	1	33	-	33	-	-	-	-
North Dakota	4	-	4	4	-	-	-	-
Ohio	-	-	-	-	-	-	-	-
Oklahoma	5	2	3	5	-	-	-	-
Oregon	-	-	-	-	-	-	-	-
Pennsylvania	2	2	-	2	3	-	3	3
Rhode Island	2	2	-	2	-	-	-	-
South Carolina	3	311	-	311	-	-	-	-
South Dakota	1	-	1	1	-	-	-	-
Tennessee	3	-	3	3	-	-	-	-
Texas	-	-	-	-	-	-	-	-
Utah	-	-	-	-	-	-	-	-
Vermont	-	-	-	-	-	-	-	-
Virginia	-	-	-	-	-	-	-	-
Washington	2	2	-	2	1	-	1	1
West Virginia	1	1	3	4	1	-	39	39
Wisconsin	-	-	-	-	1	-	68	68
Wyoming	-	-	-	-	-	-	-	-
Total	81	461	46	507	12	0	142	142
Average	3	26	4	19	1	0	14	14

**Table 2: Facilities
(page 7 of 7)
Explanatory Notes**

STATE	NOTES
Alaska	PUC count does not include Gulf Coast cabins, which are located in a state game refuge, the yurts in Kachemak Bay, and the yurts/cabin rented by the Eagle River Nature Center.
Arizona	All campsites are available year round.
Arkansas	Rental RVs and Yurts wer added to Campsite numbers, hike in and bike campsites ere added to Primitive Campsites, camper cabins were added to Cabins, boat house added to marinas and an equestrian barn was added to the stables.
Hawaii	[1] Wailua Marina added to the count. We have other facilities that function as access to water resources but not actual marinas. [2] We dont not have an complete inventory of Group Use facilities but are working on on collecting this data. [3] Many camping areas are based on the total campers allowed and not neccesarly assinged camping spots.
Illinois	Illinois does not currently track seasonal vs nonseasonal campsites. AIX Project Staff note: A significantly higher number of year-around lodge rooms was reported by the state.
Indiana	2019/2020 pools did not open in 2020 season due to uncertainty of covid-19 pandemic
Iowa	Campsite availability in winter is dependent upon the weather. One of the group camps did not operate in FY20. Swimming pool is the waterpark at the resort. Marina is the marina at Big Creek State Park.
Missouri	The concessionaire ran stables close in December 2018.
Nebraska	Camp site inventory's were updated and verified this year; reorganization of primitive sites at Lake McConaughy and other parks resulted in smaller amount of sites
Nevada	3 New year round cabins at WildHorse SRA
New York	Ski Areas are no longer managed by the DEC or OPRHP. They are managed by the Olympic Regional Development Agency (ORDA). The seasonal swimming pool number has been adjusted to include wading pools within the complex.NYS information is from 4/1/19-3/31/20, which was not impacted by the COVID-19 Pandemic. AIX Project Staff note: A significantly higher number of primitive campsite areas was reported by the state.
Oklahoma	Arrowhead and Lake Eufaula no longer have stable operations-Sequoyah Golf now only has 9 holes-bought 5 new cabins at Ft. Cobb-bought camprground at Little Sahara
Oregon	Improved = full, electric, and tent (info OPRD Reservation Help Desk) Primitive = walk-in, primitive, and horse (info from Help Desk) Cabins/cottages = cabins, yurts, and tepees (info from Help Desk) Group Sleeping = Ranches (Silver Falls) Lodges = Silver Falls, Wolf Creek (year round) and Frenchglen (closed in winter) Restaurants = Wolf Creek and Frenchglen (closed in winter) Marinas = Cove Palisades, Wallowa, Joseph H. Stewart Swimming pool Silver Falls Conference Center (seasonal)
Pennsylvania	Stables are at Marsh Creek and Ridley Creek State Parks per POMD. The number of cabins changed slightly as Ryerson Station was reopened. Ryerson Station also had reduced their number of campsites and switched from a rustic to a modern facility after rehabilitation. Caledonia also reopened after being closed for rehabilitation. Colonel Denning was closed for rehabilitation as well.
Rhode Island	Each campground counts as one "area." All 147 improved sites are at Fisherman's. The rest qualify as primitive, including 692 at Burlingame, 76 at George Washington, 2 at East Beach, 75 at Charlestown and 35 at Fisherman's. 20 cabins are at Burlingame.
South Dakota	Cabins/cottages, by this survey's definition, also include what South Dakota considers state run lodges. Lodges, by this survey's definition, now only include concession operated motel rooms. All marinas and restaurants included in this facility inventory are operated by concessioners.
Tennessee	2 lodges and restaurants are in the process of being rebuilt
Texas	Variation in numbers is due to changing site type classifications and transition in Parks Business System vendor.
Vermont	Information provided by Kaitlin Alford Parks Communications and Customer Service Assistant. Primitive paddling site at Kingsland Bay previously unreported.
Washington	Washington parks has 63 facilities listed as "improved" campsites that are Yurt, Platform Tent, TeePees or Adirondack sites. (Updated 2020)
Wyoming	Campsites with electricity defined as improved, without electricity are primitive.

Table 3A: Visitation and Use - Attendance
(page 1 of 7)

This table comprises three subsections, Table 3A, Table 3B and Table 3C. State park visitation, or attendance, is reported separately for “day” use and “overnight” use, and by “fee” areas and “non-fee” areas.

STATE	Fee Areas			Non-Fee Areas		
	Day	Overnight	Total	Day	Overnight	Total
Alabama	3,289,671	1,371,047	4,660,718	1,751,556	-	1,751,556
Alaska	401	39,497	39,898	-	-	-
Arizona	2,011,906	930,683	2,942,589	29,698	-	29,698
Arkansas	-	-	-	6,056,553	492,066	6,548,619
California	19,511,277	5,354,117	24,865,394	- 43,300,313	-	43,300,313
Colorado	-	-	17,066,484	-	-	-
Connecticut	7,799,708	49,149	7,848,857	5,106,311	12,612	5,118,923
Delaware	4,458,185	317,947	4,776,132	1,461,712	-	1,461,712
Florida	22,849,453	1,988,447	24,837,900	-	-	-
Georgia	10,293,814	-	10,293,814	-	-	-
Hawaii	2,283,974	125,483	2,409,457	5,944,680	-	5,944,680
Idaho	6,569,436	682,509	7,251,945	-	-	-
Illinois	-	-	-	34,392,346	-	34,392,346
Indiana	11,284,613	3,761,538	15,046,151	-	-	-
Iowa	2,931,180	9,293	2,940,473	12,218,756	909,645	13,128,401
Kansas	5,932,290	1,380,624	7,312,914	-	-	-
Kentucky	-	-	-	-	-	-
Louisiana	665,259	636,685	1,301,944	-	-	-
Maine	1,788,074	280,706	2,068,780	1,578,719	-	1,578,719
Maryland	14,900,000	590,000	590,000	2,000,000	-	2,000,000
Massachusetts	6,278,352	507,234	6,785,586	20,000,000	-	20,000,000
Michigan	35,230,393	2,952,971	38,183,364	-	-	-
Minnesota	10,222,626	905,526	11,128,152	-	-	-
Mississippi	440,819	840,413	1,281,232	-	-	-
Missouri	113,279	-	113,279	18,073,094	1,134,305	19,207,399
Montana	-	69,945	69,945	3,247,487	-	3,247,487
Nebraska	7,644,592	469,053	8,113,645	-	-	-
Nevada	3,424,692	205,402	3,630,094	69,194	-	69,194
New Hampshire	979,610	111,170	1,090,780	-	-	-
New Jersey	3,650,469	107,941	3,758,410	10,325,984	-	10,325,984
New Mexico	1,370,161	2,659,723	4,029,884	-	-	-
New York	66,533,556	2,249,165	68,782,721	10,369,119	-	10,369,119
North Carolina	2,644,579	126,378	2,770,957	- 14,502,121	97,736	14,599,857
North Dakota	1,172,685	156,578	1,329,263	-	-	-
Ohio	-	-	-	38,000,000	2,603,759	40,603,759
Oklahoma	102,380	26,286	128,666	9,744,174	1,652,521	11,396,695
Oregon	9,480,475	989,482	10,469,957	32,503,031	1,263,221	33,766,252
Pennsylvania	263,791	1,511,987	1,775,778	38,939,260	-	38,939,260
Rhode Island	1,229,680	61,334	1,291,014	7,095,407	-	7,095,407
South Carolina	6,081,391	1,213,291	7,294,682	805,649	118,993	924,642
South Dakota	7,026,706	1,107,857	8,134,563	237,907	8,553	246,460
Tennessee	-	-	-	34,726,374	1,394,412	36,120,786
Texas	4,406,512	2,208,592	6,615,104	124,167	-	124,167
Utah	9,060,342	3,020,114	12,080,456	-	-	-
Vermont	475,611	387,263	862,874	-	-	-
Virginia	5,788,927	1,225,282	7,014,209	51,645	-	51,645
Washington	32,793,051	-	32,793,051	-	1,924,913	1,924,913
West Virginia	71,662	80,391	152,053	5,842,301	512,075	6,354,376
Wisconsin	16,969,434	-	16,969,434	1,704,297	-	1,704,297
Wyoming	1,792,059	511,130	2,303,189	2,703,744	-	2,703,744
Total	351,817,075	41,222,234	395,205,792	362,905,599	12,124,811	375,030,410

Table 3A: Visitation and Use – Attendance
(page 2 of 7)

	Total of All Areas		
	Day	Overnight	Total
STATE			
Alabama	5,041,227	1,371,047	6,412,274
Alaska	401	39,497	39,898
Arizona	2,041,604	930,683	2,972,287
Arkansas	6,056,553	492,066	6,548,619
California	62,811,590	5,354,117	68,165,707
Colorado	-	-	17,066,484
Connecticut	12,906,019	61,761	12,967,780
Delaware	5,919,897	317,947	6,237,844
Florida	22,849,453	1,988,447	24,837,900
Georgia	10,293,814	-	10,293,814
Hawaii	8,228,654	125,483	8,354,137
Idaho	6,321,716	197,220	6,518,936
Illinois	34,392,346	-	34,392,346
Indiana	12,345,621	2,700,530	15,046,151
Iowa	15,149,936	918,938	16,068,874
Kansas	5,932,290	1,380,624	7,312,914
Kentucky	320,000	956,620	1,276,620
Louisiana	655,259	636,685	1,291,944
Maine	3,366,793	280,706	3,647,499
Maryland	16,900,000	590,000	17,490,000
Massachusetts	26,278,352	507,234	26,785,586
Michigan	35,230,393	2,952,971	38,183,364
Minnesota	10,222,626	905,526	11,128,152
Mississippi	440,819	840,413	1,281,232
Missouri	18,186,373	1,134,305	19,320,678
Montana	3,247,487	69,945	3,317,432
Nebraska	7,644,592	469,053	8,113,645
Nevada	3,492,886	205,398	3,698,284
New Hampshire	979,610	111,170	1,090,780
New Jersey	13,976,453	107,941	14,084,394
New Mexico	1,370,161	2,659,723	4,029,884
New York	76,902,675	2,249,165	79,151,840
North Carolina	17,146,700	265,945	17,412,645
North Dakota	1,172,685	156,578	1,329,263
Ohio	38,000,000	2,603,759	40,603,759
Oklahoma	9,846,554	1,678,807	11,525,361
Oregon	41,983,506	2,252,703	44,236,209
Pennsylvania	39,203,051	1,511,987	40,715,038
Rhode Island	8,325,087	61,334	8,386,421
South Carolina	6,887,040	1,332,284	8,219,324
South Dakota	7,264,613	1,116,410	8,381,023
Tennessee	34,726,374	1,394,412	36,120,786
Texas	5,108,406	2,208,592	7,316,998
Utah	9,060,342	3,020,114	12,080,456
Vermont	475,611	387,263	862,874
Virginia	5,840,572	1,225,282	7,065,854
Washington	32,793,051	1,924,913	34,717,964
West Virginia	5,761,910	592,466	6,354,376
Wisconsin	18,673,731	-	18,673,731
Wyoming	4,495,803	511,130	5,006,933
Total	716,270,636	52,799,194	786,136,314

**Table 3B: Visitation and Use – Overnight Visitation
(page 3 of 7)**

STATE	Overnight Visitor by Type of Accommodations					Total
	Campers	Lodges	Cabins	Other	Group	
					Facilities	
Alabama	1,051,652	76,921	79,279	158,067	5,128	1,371,047
Alaska	10,162	-	29,736	-	-	39,898
Arizona	895,786	-	34,897	-	-	930,683
Arkansas	385,477	42,001	59,061	1,974	3,553	492,066
California	5,138,586	-	-	215,163	-	5,353,749
Colorado	525,110	-	11,319	-	9,590	546,019
Connecticut	59,914	-	2,781	-	-	62,695
Delaware	277,958	-	25,124	6,695	8,170	317,947
Florida	2,200,579	13,737	150,389	42,575	25,391	2,432,671
Georgia	1,420,388	3,460	281,961	45,046	11,679	1,762,534
Hawaii	53,183	-	13,896	-	-	67,079
Idaho	659,143	1,963	11,400	5,032	4,971	682,509
Illinois	532,047	89,339	-	-	238	621,624
Indiana	2,190,214	295,636	122,067	-	92,613	2,700,530
Iowa	821,565	26,800	66,471	-	4,102	918,938
Kansas	1,314,600	-	65,804	-	220	1,380,624
Kentucky	681,620	175,000	100,000	-	-	956,620
Louisiana	351,277	24,366	229,206	-	31,836	636,685
Maine	280,706	-	-	-	-	280,706
Maryland	145,228	-	15,363	-	1,386	161,977
Massachusetts	495,174	-	12,060	-	-	507,234
Michigan	2,952,971	11,000	81,022	-	15,279	3,060,272
Minnesota	834,369	2,208	68,949	-	-	905,526
Mississippi	514,402	2,333	82,547	-	9,786	609,068
Missouri	969,619	-	134,275	-	30,411	1,134,305
Montana	68,414	-	1,210	-	321	69,945
Nebraska	397,067	7,082	64,904	-	-	469,053
Nevada	205,402	-	300	-	-	205,702
New Hampshire	108,340	-	2,830	-	-	111,170
New Jersey	149,473	-	4,823	-	27,658	181,954
New Mexico	2,659,723	-	-	-	-	2,659,723
New York	1,918,742	-	330,422	-	-	2,249,165
North Carolina	259,697	6,191	5,677	-	8,827	280,392
North Dakota	228,802	-	12,059	-	-	240,861
Ohio	2,038,783	203,019	279,083	31,166	51,708	2,603,759
Oklahoma	1,163,753	83,370	175,379	10,429	245,876	1,678,807
Oregon	2,001,186	14,573	174,544	-	62,400	2,252,703
Pennsylvania	1,170,569	7,691	229,688	-	104,039	1,511,987
Rhode Island	59,769	-	1,565	-	-	61,334
South Carolina	1,215,915	16,647	77,112	-	22,610	1,332,284
South Dakota	1,024,597	4,276	83,198	-	-	1,112,071
Tennessee	1,152,162	65,003	177,247	318,304	90,486	1,803,202
Texas	-	17,104	-	-	-	17,104
Utah	1,419,391	-	16,425	1,705	290,172	1,727,693
Vermont	366,710	1,372	19,181	-	-	387,263
Virginia	810,046	-	415,236	-	-	1,225,282
Washington	1,678,537	-	67,270	139,899	39,207	1,924,913
West Virginia	294,900	183,155	114,411	-	4,442	596,908
Wisconsin	163,864	-	-	203	193	164,260
Wyoming	495,124	-	6,200	-	9,806	511,130
Total	45,812,696	1,374,247	3,936,371	976,258	1,212,098	53,311,671

**Table 3C: Visitation and Use – Overnight Facility Utilization
(page 4 of 7)**

STATE	Numbers of Campsite Nights Rented			Days in Season
	Year	Seasonal	Total	
Alabama	429,006	-	429,006	365
Alaska	-	4,325	4,325	150
Arizona	259,946	-	259,946	-
Arkansas	385,477	-	385,477	-
California	834,653	-	834,653	-
Colorado	-	-	400,478	260
Connecticut	-	55,677	55,677	106
Delaware	51,436	38,083	89,519	150
<i>Florida</i>	<i>832,359</i>	<i>-</i>	<i>832,359</i>	<i>365</i>
Georgia	441,298	-	441,298	-
Hawaii	34,551	-	34,551	-
Idaho	71,202	168,309	239,511	98
Illinois	167,135	-	167,135	-
Indiana	515,680	-	515,680	365
Iowa	784	249,364	250,148	180
Kansas	328,650	-	328,650	365
Kentucky	-	-	243,436	245
Louisiana	134,504	-	134,504	-
Maine	-	105,133	105,133	137
Maryland	6,479	139,932	146,411	244
Massachusetts	-	169,078	169,078	123
Michigan	196,521	786,085	982,606	210
Minnesota	727,929	-	727,929	180
Mississippi	144,428	-	144,428	365
Missouri	246,288	21,044	267,332	213
Montana	33,067	35,972	69,039	125
Nebraska	1,400,304	-	1,400,304	273
Nevada	150,257	287	150,544	-
New Hampshire	135	84,776	84,911	-
New Jersey	28,190	16,487	44,677	214
New Mexico	31,357	-	31,357	-
New York	-	573,354	573,354	180
North Carolina	72,789	91,829	164,618	155
North Dakota	-	76,355	76,355	365
Ohio	619,214	-	619,214	-
Oklahoma	775,835	-	775,835	365
Oregon	512,219	112,347	624,566	245
Pennsylvania	31,387	340,929	372,316	240
Rhode Island	-	59,769	59,769	125
South Carolina	405,223	80,311	485,534	230
South Dakota	246,293	62,251	308,544	365
Tennessee	329,017	-	329,017	365
Texas	-	-	-	-
Utah	-	-	-	-
Vermont	-	142,786	142,786	110
Virginia	56,678	100,903	157,581	271
Washington	485,793	86,746	572,539	175
West Virginia	30,916	80,590	111,506	200
Wisconsin	-	393,774	393,774	189
Wyoming	96,419	-	96,419	365
Total	11,113,419	4,076,496	15,833,829	8,678

**Table 3C: Visitation and Use – Overnight Facility Utilization
(page 5 of 7)**

STATE	Number of Cabins/Cottages Nights Rented			
	Year	Seasonal	Total	Days in
	Round			Season
Alabama	39,178	-	39,178	365
Alaska	10,707	252	10,959	200
Arizona	10,483	-	10,483	-
Arkansas	59,061	-	59,061	-
California	22,550	-	22,550	-
Colorado	-	-	6,844	260
Connecticut	-	2,064	2,064	106
Delaware	7,341	236	7,577	121
<i>Florida</i>	<i>43,556</i>	<i>-</i>	<i>43,556</i>	<i>365</i>
Georgia	71,678	-	71,678	-
Hawaii	8,550	-	8,550	-
Idaho	3,768	2,605	6,373	98
Illinois	-	-	-	365
Indiana	10,310	7,692	18,002	210
Iowa	9,913	5,862	15,775	180
Kansas	16,451	-	16,451	300
Kentucky	50,000	-	50,000	-
Louisiana	18,720	-	18,720	-
Maine	-	-	-	-
Maryland	7,725	6,675	14,400	244
Massachusetts	-	5,976	5,976	123
Michigan	18,049	4,512	22,561	-
Minnesota	20,496	-	20,496	180
Mississippi	27,747	-	27,747	365
Missouri	10,907	30,679	41,586	213
Montana	358	852	1,210	125
Nebraska	48,647	16,257	64,904	214
Nevada	5	-	5	-
New Hampshire	202	2,241	2,443	257
New Jersey	7,182	413	7,595	214
New Mexico	-	-	-	-
New York	39,501	72,317	111,818	180
North Carolina	3,698	78	3,776	254
North Dakota	-	3,868	3,868	365
Ohio	67,749	-	67,749	-
Oklahoma	116,920	-	116,920	365
Oregon	51,670	1,367	53,037	245
Pennsylvania	35,066	24,267	59,333	240
Rhode Island	-	1,565	1,565	125
South Carolina	24,927	777	25,704	204
South Dakota	18,788	7,270	26,058	365
Tennessee	50,604	-	50,604	365
Texas	-	-	-	-
Utah	3,300	4,220	7,520	150
Vermont	-	6,624	6,624	110
Virginia	39,992	5,674	45,666	271
Washington	21,669	1,169	22,838	175
West Virginia	35,426	7,303	42,729	290
Wisconsin	943	-	943	178
Wyoming	2,247	-	2,247	varies
Total	1,036,084	222,815	1,265,743	8,387

**Table 3C: Visitation and Use – Overnight Facility Utilization
(page 6 of 7)**

STATE	Numbers of Lodge Nights Rented			Days in Season
	Year	Seasonal	Total	
	Round			
Alabama	102,212	-	102,212	365
Alaska	-	-	-	-
Arizona	-	-	-	-
Arkansas	42,001	-	42,001	-
California	-	-	-	-
Colorado	-	-	-	-
Connecticut	-	-	-	-
Delaware	-	-	-	-
<i>Florida</i>	<i>6,791</i>	<i>-</i>	<i>6,791</i>	<i>365</i>
Georgia	177	-	177	-
Hawaii	-	-	-	-
Idaho	-	528	528	98
Illinois	49,498	-	49,498	365
Indiana	121,554	5,581	127,135	213
Iowa	10,823	-	10,823	365
Kansas	-	-	-	-
Kentucky	150,000	-	150,000	-
Louisiana	1,464	-	1,464	-
Maine	-	-	-	-
Maryland	-	-	-	-
Massachusetts	-	-	-	-
Michigan	11,000	-	11,000	-
Minnesota	2,208	-	2,208	180
Mississippi	2,250	-	2,250	365
Missouri	-	-	-	213
Montana	-	-	-	-
Nebraska	5,196	1,866	7,062	244
Nevada	-	-	-	-
New Hampshire	-	-	-	-
New Jersey	-	-	-	-
New Mexico	-	-	-	-
New York	-	-	-	-
North Carolina	3,838	-	3,838	-
North Dakota	-	-	-	-
Ohio	106,852	-	106,852	-
Oklahoma	55,580	-	55,580	365
Oregon	3,630	786	4,416	245
Pennsylvania	3,537	77	3,614	219
Rhode Island	-	-	-	-
South Carolina	4,882	667	5,549	152
South Dakota	510	-	510	365
Tennessee	26,001	-	26,001	365
Texas	-	-	-	-
Utah	-	-	-	-
Vermont	1,928	-	1,928	209
Virginia	-	-	-	-
Washington	-	-	-	-
West Virginia	100,793	2,264	103,057	-
Wisconsin	-	-	-	-
Wyoming	-	-	-	-
Total	812,725	11,769	824,494	4,693

Table 3C: Visitation and Use
(page 7 of 7)
Explanatory Notes

STATE	NOTES
Alaska	All numbers are from facilities currently on Reserve America. ASP has not been able to keep visitor counts or occupancy numbers on facilities not currently RA.
Arizona	Attendance numbers include parks being operated by partners. Fees are not collected at Granite Mountain Hotshots Memorial SP or McFarland State Historic Park, which now serves as the City of Florence Visitor Center
California	Due to COVID-19 staffing, specific camping data based on comparison of previous year's data.
Florida	<i>Attendance numbers unavailable by fee areas vs non fee areas. FY18-19 data were used. Florida State Parks transitioned from Aspira to US eDirect in May 2021.</i>
Hawaii	Attendance numbers represent a combination of hard-counts from reservations, surmised data for a number of our open land areas, a reduction of 30% caused by 3 months of closure due to Covid-19 precautions. Camping and Lodging numbers are hard-count numbers. We are in implementing reservation systems at a number of areas so these numbers will be refined in the coming years.
Illinois	IL DNR does not track individual overnight attendance at lodging / campsites only number of nights rented. Overnight accommodations are not differentiated between camping and cabins
Indiana	Permanent Note: Cabin rentals include rentacamps and cottages from Lincoln/Shakamak. Campsites include all camping types, group camps, rally camps, youth tents. Lodge cabins are included with lodge nights. Reservation Methods Report from ReserveAmerica (run by each site loop/type).
Kansas	Seasonal campsites are open year round
Maine	Campgrounds opened 16 days later due to Covid restrictions; non-resident campers restricted briefly by policy then to some degree by travel restrictions. Capacity restrictions and temporary day-use closures in place at times.
Maryland	campsite = campsite, group, youth group, overflow, yurt. Cabins = full service cabins, mini cabins, houses
Mississippi	Lodge nights includes motel and villa.
Missouri	Camping and lodging were closed from March 27, 2020 to May 17, 2020 due to the COVID-19 pandemic. Camping was open from May 18, 2020 to June 30, 2020 with a 50% occupancy limit.
Nebraska	Agency established covid protocols resulted in the closure of some campsites for socially distancing from March - May, the closure of cabins and lodge rooms Sun-Thurs for extensive cleaning/rest period, and the closure of group facilities pending updates in capacity DHMs. Day use visitation was perceived to be much higher, however we are still gathering data from reporting parks (Lake McConaughy SRA and ET Mahoney SP)
Nevada	Visitation down due to covid-19 closures - 3 new cabins at Wild Horse SRA
New Mexico	COVID -19 closures and restrictions impacted vistation and revenue.
New York	New York State Office Parks Recreation Historic Preservation (OPRHP) no longer offers year round camping. NYS information is from 4/1/19-3/31/20, which was not impacted by the COVID-19 Pandemic.
North Carolina	Nights for Cabins=1 for COVID restrictions
Ohio	For Day Visitor Attendance, the figure listed is a very broad estimate. Ohio has no specific method for calculating day use visitors as Ohio has no entrance fees or parking passes, and Ohio does not do any type of manual visitor counting due to multiple access points for most parks. Seasonal campsites are concession operated and we don't have visitation numbers for these sites.
Oklahoma	other-yurts/huts
Oregon	Campsites are all sites except cabins, yurts, and tepees. "Cabins" are cabins, yurts, and tepees. Lodge Rooms include Silver Falls Conference Center and Wolf Creek for year round, and Frenchglen for seasonal (closed in winter).
Pennsylvania	Due to the parks remaining open for day use visitors during the COVID19 pandemic, visitors flocked to the parks for their mental health and exercise. An estimated 3.3M more visitors came versus 2019.COVID 19 in March 2020 through the end of the FY caused reduction of overnight services for extended periods. Prior to COVID, Ryerson Station, Caledonia, Tobyhanna and Locust Lake reopened after rehab and roadwork. Lodge and cabin/cottage overnights declined due to COVID-19 Closures. We were able to reopen lessening the impact of closures. Campsites rebounded significantly after the parks reopened.
Rhode Island	Last year, our overnight camping with fees was placed in the overnight non-fee section. This is corrected for this year. The campgrounds didn't open until June 30, shortening the season by 75 days, and up to 50% of the spots were blocked off due to COVID-19.
South Carolina	Covid, capacity was entered for campsites last year not number of nights rented
South Dakota	SD includes facilities operated by concessioners in the facilities report in Table 2. However, visitation numbers are not readily available from our concessioners and, therefore, are not include in the visitation information in Table 3. State operated lodge numbers are included in the cabin and cottage
Tennessee	The Lodge at Fall Creek Falls closed for rebuild (April 2018 - Present), the Lodge at Paris Landing closed for rebuild (August 2018 - Present)
Vermont	Information provided by Kaitlin Alford.
Wyoming	Please keep in mind that we don't collect a lot of these stats - so I have to use averages, manipulate the data, etc

**Table 3D: Overnight Reservation System
(page 1 of 2)**

Overnight Reservation Systems			
STATE	Centralized Reservation System(s) Used	If Yes, List System Provider(s)	Reservation System Data for AIX Reporting (Y/N)?
Alabama	Yes	Megasys Portfolio/ US e Direct	No
Alaska	Yes	Reserve America	Yes
Arizona	Yes	Itinio	Yes
Arkansas	Yes	Maestro/Reswave	Yes
California	Yes	ReserveCalifornia	Yes
Colorado	Yes	Aspira	Yes
Connecticut	Yes	Aspira/Reserve America	Yes
Delaware	Yes	Reserve America/Aspira	Yes
Florida	Yes	Aspira	No
Georgia	Yes	Aspira One	Yes
Hawaii	Yes	Hawaii Information Consortium	Yes
Idaho	Yes	reserve America	Yes
Illinois	Yes	Reserve America	Yes
Indiana	Yes	ASPIRA	No
Iowa	Yes	ReserveAmerica (Aspira)	Yes
Kansas	Yes	Reserve America	Yes
Kentucky	Yes	Reserve America & Megasys	Yes
Louisiana	Yes	Aspira	Yes
Maine	Yes	NIC/InforME	Yes
Maryland	Yes	CAMIS	Yes
Massachusetts	Yes	Aspira One	Yes
Michigan	Yes	Camis	Yes
Minnesota	Yes	US eDirect	Yes
Mississippi	Yes	Aspira	Yes
Missouri	Yes	USEDirect	Yes
Montana	Yes	Aspira One	Yes
Nebraska	Yes	Aspira	Yes
Nevada	No		No
New Hampshire	Yes	Reserve America	Yes
New Jersey	Yes	NIC USA	Yes
New Mexico	Yes	Reserve America	No
New York	Yes	Aspira	Yes
North Carolina	Yes	Aspira	Yes
North Dakota	Yes	Leisure Interactive	Yes
Ohio	Yes	USEDirect	Yes
Oklahoma	Yes	Megasys	Yes
Oregon	Yes	Reserve America	Yes
Pennsylvania	Yes	RA Outdoors, dba Aspria	Yes
Rhode Island	Yes	Reserve America Aspira	Yes
South Carolina	Yes	Itinio	Yes
South Dakota	Yes	Leisure Interactive	Yes
Tennessee	Yes	Rev'd Up (Itinio); HMS Megasys	Yes
Texas	Yes	Aspira	Yes
Utah	Yes	Aspira	Yes
Vermont	Yes	private contractor, transitioned to ASPIRA mid-year	Yes
Virginia	Yes	Aspira	Yes
Washington	Yes	Camis	Yes
West Virginia	Yes	Inntopie, RoomMaster, Camplife	No
Wisconsin	Yes	CAMIS	Yes
Wyoming	Yes	Reserve America/Aspira	Yes

**Table 3D: Overnight Reservation System
(page 2 of 2)**

Explanatory Notes

STATE	Notes
Alaska	Only for Cabins
Arizona	Itinio is used to track all visitation, including overnight use at Arizona State Parks. Excluding parks run by local partners.
Colorado	All items are from our system. The system contains all data related to camping customers, camping reservations, and pass and license sales.
Delaware	Used for analysis of reservation trends
Florida	Florida State Parks transitioned from Aspira to US eDirect in May 2021. Due to this transition, some previous year data is currently unavailable.
Illinois	Changed system provider from Reserve America to One Outdoor
Indiana	"type" of overnight, but not for total overnight
Iowa	We use reports for overnight data including occupancy and starting to look at forecasting.
Kansas	Occupancy Report
Massachusetts	overnight numbers
Minnesota	All data for AIX report generated by using Tableau software and connecting to vendor's Tableau server directly
Mississippi	Aspira Park Revenue Reports
Missouri	Tables 3a, 3c, and 3d overnight visitor and facilities data came from the reservation system. Data for table 5e came from the the State Accounting System, using data that was interfaced from the reservation system. Other data collected includes occupancy and retail merchandise sales.
Nebraska	Only 27 of our parks are on the Reservation system
New Mexico	Data is based on field ops generated data.
New York	OPRHP uses ASPIRA data for general statistical metrics - occupancy, out of state visitation, as well as year-over-year trending.
North Carolina	overnight visitation, revenue, nights, seasonality,
North Dakota	All camping numbers starting Jan 2019
Ohio	Because we changed systems in Dec. 2019, data used for the FY20 report includes data from the Aspira system, which we used through Dec. 2019 and from the USeDirect system which we started using in Dec. 2019.
Oregon	OPRD uses reservation system data provided by Aspira to determine the number of rental nights and utilizes a multiplier to estimate overnight attendance.
Pennsylvania	We use the reservation system data on Attendance, Revenue, Facility Inventory counts and Nights Utilized.
South Dakota	Fees & number of nights are collected from the Reservation System.
Vermont	Facilities, visitation, and revenue derived from system
Virginia	We use the reservation system for the number of camper and cabin nights, and for the overnight portion of the attendance figures. We maintain a separate system to calculate the day use visitation
Washington	For overnight accommodations, 78 of 97 parks were on the reservation system. The customer reports the number of people in their site. Other key metrics: we use zip codes for customer demographics.
Wyoming	Stats are coming, in part, from centralized reservation system data. We do have some first-come, first-served sites that aren't reflected in that dataset. Reservation numbers are used along with an estimate of 3 campers per party to derive these numbers.

**Table 4: Capital Expenses
(page 1 of 2)**

Capital expenditure consists of new land acquisitions and new construction of state park improvements.

STATE	By Purchase		By Other Means		Total Acreage Acquired	New Construction Costs
	Acreage	Cost	Acreage	Value		
Alabama	-	-	-	-	-	-
Alaska	-	-	-	-	-	1,107,798
Arizona	-	-	-	-	-	-
Arkansas	-	27,651	-	-	-	-
California	-	-	-	-	-	-
Colorado	19,209	19,750,000	2,919	400,000	22,128	17,532,666
Connecticut	707	1,444,025	711	3,768,125	1,418	500,000
Delaware	232	4,601,439	31	250,000	263	10,685,654
Florida	-	-	571	-	571	650,058
Georgia	346	-	-	1,210,000	-	4,958,127
Hawaii	-	-	-	-	-	8,901,483
Idaho	-	-	-	-	-	3,332,305
Illinois	-	-	-	-	-	3,717,189
Indiana	-	-	-	-	-	2,049,405
Iowa	-	-	2	-	2	8,230,410
Kansas	-	-	-	-	-	-
Kentucky	2,037	1,527,596	-	-	2,037	-
Louisiana	-	-	296	400,000	296	-
Maine	4	270,000	-	-	4	-
Maryland	160	-	-	-	160	-
Massachusetts	727	3,757,400	188	1,639,300	915	-
Michigan	337	325,010	11	-	348	-
Minnesota	260	2,027,000	-	-	260	-
Mississippi	-	-	-	-	-	-
Missouri	-	-	-	-	-	892,478
Montana	-	-	-	-	-	-
Nebraska	-	-	-	-	-	-
Nevada	-	-	-	-	-	5,313,732
New Hampshire	1	13,700	6	17,900	7	1,392,250
New Jersey	4,198	25,693,000	675	-	4,873	-
New Mexico	-	-	-	-	-	-
New York	2,051	10,204,544	9	-	2,060	125,000,000
North Carolina	5,687	11,550,776	2,247	5,655,793	7,934	4,140,505
North Dakota	-	-	-	-	-	946,978
Ohio	2	538,000	-	-	2	74,658,133
Oklahoma	60	1,047,679	-	-	60	-
Oregon	69	950,000	12	-	81	2,225,484
Pennsylvania	806	3,464,779	-	-	806	19,500,000
Rhode Island	-	-	-	-	-	9,584,674
South Carolina	235	14,017	-	-	235	-
South Dakota	-	-	-	-	-	14,448,180
Tennessee	6,799	7,234,976	1,648	25,000,000	8,447	27,990,000
Texas	1,114	2,157,797	46	263,528	1,160	-
Utah	28	120,000	-	-	28	-
Vermont	-	-	-	-	-	3,700,000
Virginia	224	803,896	643	15,000,000	867	-
Washington	137	2,748,102	517	150,000	654	41,573,311
West Virginia	-	-	-	-	-	-
Wisconsin	186	925,000	-	-	186	20,000,000
Wyoming	-	-	-	-	-	-
Total	45,617	101,196,387	10,531	53,754,646	55,802	413,030,820

**Table 4: Capital Expenses
(page 2 of 2)
Explanatory Notes**

STATE	NOTES
Arkansas	0.170 acre lot acquired by purchase at Jacksonport State Park
Colorado	New construction costs include capital improvements to parks which may be new equipment, new park features/facilities, and/or improvements to existing park features/facilities
Hawaii	This total does not include Plan & Design costs. Gross total with Plan & Design is a little over 10mil.
Idaho	Total construction investment for 2020.
Indiana	New Construction Costs / Capital Expenses: \$2,049,405. Institutional Roads provided by James = \$1.535M and new capital provided by Dennis = \$514,405
Iowa	Appraised value for donated land was not available. New Construction includes major renovation/rehabilitation of vertical and horizontal infrastructure and lake restoration work.
Kansas	No new land purchases
Louisiana	donation of land from civil war battlefield trust
Nebraska	No additional land purchases
Nevada	Pitchfork, Valley of Fire, Ice Age, Cathedral Gorge, Spring Valley, Rafter 7, Washoe Lake, Wild Horse, Lake Tahoe (construction costs)
New Hampshire	Cannon Mountain Tramway Summit Bldg. Fire Protection System \$1,392,250
New Mexico	No property acquisition to report.
New York	Notes: There is a significant difference in the total cost of all lands purchased because the dollar variance for these acquisitions is attributed to geographic location. NYS information is from 4/1/19-3/31/20, which was not impacted by the COVID-19 Pandemic.
Oklahoma	Land/Campground at Little Sahara
Oregon	Table 4 data source: OPRD Right Of Way Agent and OPRD Operations Budget Analyst from Statewide Accounting System Queries. Note: Oregon is on a biennial budget cycle.
Rhode Island	This includes \$251,148 to Fort Adams Trust for continuing preservation of historic fort, \$2,964,435 in bikeway bonds, \$4,582,419 in Recreation Facilities RICAP funds, and \$1,786,672 in recreation-related bonds.
South Carolina	Acquired McCall Tract at Paris Mountain and Oconee Towne
Tennessee	The 1,648 acres acquired was transferred from TN State Forestry.
Vermont	Information on # of areas, acreage, natural areas/ acreage provided by Niels Rinehart, Lands Administration & Records Coordinator. New construction costs from Frank Spaulding, Parks Projects Manager.
Washington	4a. Property acquired by other means: This property is owned by Department of Natural Resources. Washington State Parks administers this property. When full ownership is transferred to State Parks a full appraisal assessment will be conducted. 4b.Capital projects for State Parks can extend over several biennia. The total cost of the new construction reflects all capital allotments within the reporting fiscal year., such as new state appropriations and re-appropriations and local and state grants.

**Table 5A: Financing – Operating Expenditures
(page 1 of 19)**

Expenditures are reported in two general categories: operating expenditures and fixed capital expenditures. Please refer to the definition of terms section for a detailed description of each. Table 5 comprises six subsections on various aspect of financing issues. Due to the complexity of this table explanatory notes are provided after each subsection. States that provided “-” or no data are excluded from averages.

Operating Expenses - Source of Funds						
STATE	Park Generated Revenue	General Fund	Dedicated Funds	Federal Funds	Other	Total Operating Expenses
Alabama	38,012,493	-	2,895,000	-	141,812	41,049,305
Alaska	4,748,900	73,100	4,514,700	1,257,600	3,073,100	13,667,400
Arizona	15,763,400	-	6,261,100	786,600	3,897,000	26,708,100
Arkansas	21,718,506	13,660,082	34,781,880	-	-	70,160,468
California	126,202,142	216,867,000	377,917,000	16,185,000	45,141,000	782,312,142
Colorado	-	-	-	-	-	76,216,193
Connecticut	14,896,354	2,999,196	-	-	-	17,895,550
Delaware	19,512,657	9,827,937	222,085	143,880	286,734	29,993,293
Florida	54,250,924	-	89,853,524	549,938	-	144,654,386
Georgia	40,962,272	12,841,029	171,836	482,318	558,375	55,015,830
Hawaii	6,514,728	6,764,914	-	1,000,000	-	14,279,642
Idaho	8,438,300	3,429,200	5,202,400	1,360,400	410,300	18,840,600
Illinois	14,300,000	10,000,000	133,000,000	-	-	157,300,000
Indiana	56,610,546	7,890,713	-	-	3,712,753	68,214,012
Iowa	5,024,668	5,977,692	7,225,327	29,964	1,510,354	19,768,005
Kansas	11,504,598	2,000,000	1,579,150	861,670	2,959,060	18,904,478
Kentucky	37,971,092	48,111,500	-	-	-	86,082,592
Louisiana	714,894	17,707,372	12,086,921	851,526	178,227	31,538,940
Maine	-	7,665,033	1,501,873	86,890	-	9,253,796
Maryland	10,444,698	5,693,430	28,221,139	135,756	996,858	45,491,881
Massachusetts	14,660,116	85,116,229	-	615,396	628,049	101,019,790
Michigan	52,980,600	3,036,300	9,554,700	46,000	-	65,617,600
Minnesota	25,742,403	23,748,825	35,116,065	1,595,648	27,305,330	113,508,271
Mississippi	6,543,424	3,884,404	-	-	-	10,427,828
Missouri	6,844,446	-	46,617,264	4,703,493	-	58,165,203
Montana	4,537,032	-	4,009,564	527,469	1,546,905	10,620,969
Nebraska	21,210,143	7,526,025	285,225	42,158	-	29,063,551
Nevada	5,462,488	11,802,719	1,129,346	63,283	2,588,308	21,046,144
New Hampshire	23,209,967	-	-	-	-	23,209,967
New Jersey	6,485,567	6,335,000	13,704,315	19,229,040	-	45,753,921
New Mexico	6,585,194	7,343,800	96,200	2,291,310	-	16,316,504
New York	89,450,000	130,721,000	-	7,283,000	-	227,454,000
North Carolina	10,579,660	32,600,479	-	-	6,572,852	49,752,991
North Dakota	4,738,645	8,640,248	-	624,827	592,566	14,596,286
Ohio	28,942,610	37,076,899	7,881,485	-	-	73,900,994
Oklahoma	25,250,378	9,921,020	-	2,845,876	507,475	38,524,749
Oregon	21,600,566	-	14,777,641	3,856,313	30,198,553	70,433,073
Pennsylvania	26,000,000	55,311,000	-	-	33,082,000	114,393,000
Rhode Island	-	12,924,733	1,090,626	-	-	14,015,359
South Carolina	30,859,938	3,912,351	-	-	-	34,772,289
South Dakota	18,611,127	5,436,654	-	2,540,175	-	26,587,956
Tennessee	38,764,646	48,680,039	-	862,500	2,565,213	90,872,398
Texas	16,204,296	161,759	64,410,818	1,425,824	289,299	82,491,996
Utah	19,779,924	104,000,000	16,000,000	-	-	139,779,924
Vermont	6,168,200	378,549	3,998,026	172,118	60,000	10,776,893
Virginia	22,699,134	19,493,680	-	741,572	-	42,934,386
Washington	54,949,740	16,757,797	5,116,847	-	-	76,824,384
West Virginia	26,843,772	12,489,120	6,915,047	-	-	46,247,939
Wisconsin	21,935,509	-	-	503,930	-	22,439,439
Wyoming	3,142,822	9,384,239	-	-	616,970	13,144,031
Total	1,128,373,517	1,028,191,068	936,137,103	73,701,475	169,419,093	3,412,038,448

Table 5A: Financing – Operating Expenditures
(page 2 of 19)
Explanatory Notes

STATE	NOTES
Alaska	5a.5 Other sources: Inter-agency projects, capital improvement project.
California	Total Operating Expenses includes all fund sources. Other sources include donations, reimbursements and revenue incentive subaccount.
Colorado	Revenue does not tie directly to Colorado Parks and Wildlife's operating expenditures in a given fiscal year. Total operating expenses includes personal services, operating expenditures, grants to others and payments to other
Florida	Florida State Parks revenues were reduced due to COVID-19.
Hawaii	Park Generated Revenue consists of Camping, Lodging, Entrance, Parking, and Concessions; Operating Expenses is misleading because we have a spending ceiling which prohibits us from utilizing all the funds generated.
Idaho	Other Sources: Misc. receipts (Fund 0349) and indirect cost recovery (Fund
Indiana	Actual park/inn/resale generated revenue totaled \$56,610,546, but only \$68,214,012 was needed to cover operating expenses (plus the general fund of \$7.9M and other revenue of roughly \$3.7). Everything else was over and above.
Iowa	Dedicated funds: Appropriation from Environment First Fund, REAP, and snow/ATV registrations. Other Sources: Sand and gravel royalties, barge fleeting, donations, Ag Leases, misc, reimbursements, state forest revenues.
Kansas	We have received EDIF Economic Development Initiative Fund. It was placed in the general fund place. Additionally, we receive road funds which we placed in other sources with other funds added to it. Parks generated revenue includes cabins. We received State General Fund money in FY20 for FEMA projects from
Nevada	Revenue is down due to park closures during spring 2020 due to Covid-19
New Hampshire	Due to COVID, fewer State Parks were opened and the season was shortened.
New York	Notes: Financing and Operating Expenditures are based on the NY Fiscal Year which runs from April 1 through March 31. NYS information is from 4/1/19-3/31/20, which was not impacted by the COVID-19 Pandemic.
North Dakota	Other includes Snowmobile and OHV registration fees.
Oregon	Park Generated Revenue detail in Table Dedicated funds: Deschutes River \$270,986; Trust and Dedicated funds \$3,296,970; Salmon Plates \$174,876; RV (includes County Opp Grant amount, but is net of Park Assistance Fund transfer to counties) \$9,501,469; Marine Board \$307,780; Rest Area \$1,099,784; Roads transfer from ODOT \$125,776. Other sources include Lottery, Interest (ATV excluded), Forest Management, beginning balances, etc. Total does not include Community Support & Grants or Debt Service.
Rhode Island	Dedicated funds includes Eisenhower House restricted receipt funds, the Natural Resource Environmental Trust account, and federal COVID-19 funding.
Texas	\$18,334,623 of fringe benefits not included in Operating Expenses. Financial accounting has not been completed for FY20 (9/1/19 - 8/31/20). Nearly all dedicated funding is from the Sporting Goods Sales Tax.
Utah	Unprecedented GF fund for infrastructure, one time projects funded.
Vermont	Information from Kristin Freeman, FPR Financial Manager. Other funding \$60K (FY20) is one-time special funds; \$34,398 (FY18) & \$19,855 (FY17) is from the Vermont Department of Environmental Conservation for water quality improvement projects at three state parks.
Washington	5a. Total amount of operating expenditures - excludes COP (debt service) NCLI and federal pass-thru grants.

Table 5B: Financing – Capital Expenditures
(page 3 of 19)

Capital Expenditures - Sources of Funds

STATE	Park Generated Revenue	General Fund	Dedicated Funds	Bonds	Federal Funds	Other	Total Capital Expenditures
Alabama	-	-	-	-	-	-	-
Alaska	-	-	-	-	-	-	-
Arizona	-	-	-	-	-	-	-
Arkansas	214,144	1,674,950	5,125,921	-	-	8,397,058	15,412,073
California	-	6,834,000	122,832,000	22,775,000	-	490,000	152,931,000
Colorado	-	-	-	-	-	-	32,819,211
Connecticut	-	-	-	1,500,000	-	-	1,500,000
Delaware	136,382	4,035,579	-	15,671,928	2,191,214	522,960	22,558,063
Florida	54,250,924	362,229	34,804,741	150,000	3,707,471	-	93,275,365
Georgia	9,114,680	30,000	109,175	16,619,288	366,433	104,100	26,343,676
Hawaii	-	-	-	10,167,669	-	-	10,167,669
Idaho	1,547,200	291,700	2,687,800	-	346,700	-	4,873,400
Illinois	-	-	-	-	-	-	-
Indiana	-	-	-	-	-	2,049,405	2,049,405
Iowa	-	-	5,808,660	-	2,406,500	15,250	8,230,410
Kansas	-	-	-	-	861,670	2,038,330	2,900,000
Kentucky	-	-	109,964	7,471,922	-	-	7,581,886
Louisiana	-	5,062,000	460,180	5,750,000	-	-	11,272,180
Maine	-	3,000	165,614	-	-	-	168,614
Maryland	-	-	15,000,000	-	-	-	15,000,000
Massachusetts	-	-	-	36,035,648	-	-	36,035,648
Michigan	14,150,148	464,569	-	-	1,114,784	2,135,082	17,864,583
Minnesota	-	151,533	794,262	-	199,744	7,870,781	9,016,320
Mississippi	-	-	-	-	-	-	-
Missouri	4,688,188	83,100	2,727,583	2,514,720	525,438	-	10,539,028
Montana	356,213	-	-	-	-	1,765,733	2,121,946
Nebraska	2,064,834	-	2,530,734	-	809,043	-	5,404,611
Nevada	539,742	-	1,160,292	1,378,667	690,776	55,587	3,825,064
New Hampshire	-	2,169,692	-	-	-	-	2,169,692
New Jersey	-	-	36,468,439	-	-	-	36,468,439
New Mexico	461,580	-	3,664,864	-	1,635,025	-	5,761,469
New York	35,076,263	19,055,374	59,441,062	89,562,362	10,827,378	-	213,962,439
North Carolina	-	-	18,641,061	6,443,092	-	671,064	25,755,217
North Dakota	-	219,692	-	-	-	-	219,692
Ohio	202,515	13,795	196,505	23,218,942	-	-	23,631,757
Oklahoma	-	-	18,816,202	-	-	-	18,816,202
Oregon	-	-	678,125	-	5,264	6,938,814	7,622,203
Pennsylvania	-	-	-	-	-	-	-
Rhode Island	-	-	-	1,786,673	-	4,853,498	6,640,171
South Carolina	196,792	11,717,750	-	9,739,435	-	291,157	21,945,134
South Dakota	10,546,543	23,234	-	-	2,541,357	-	13,111,134
Tennessee	-	313,096,800	-	-	3,262,500	100,660,800	417,020,100
Texas	-	348,896	-	411,313	-	416,617	1,176,826
Utah	-	1,447,700	24,584	-	3,192,322	3,130,726	7,795,332
Vermont	-	-	-	3,773,368	-	-	3,773,368
Virginia	-	-	-	-	-	-	-
Washington	-	404,297	41,770	17,228,683	-	6,091,958	23,766,708
West Virginia	-	-	-	-	-	-	-
Wisconsin	-	583,660	-	21,986,493	547,706	2,146,692	25,264,551
Wyoming	2,694,536	-	-	-	888,590	-	3,583,126
Total	136,240,683	368,073,549	332,289,538	294,185,203	36,119,916	150,645,611	1,350,373,711

**Table 5B: Financing – Capital Expenditures
(page 4 of 19)
Explanatory Notes**

STATE	NOTES
Alaska	No money awarded in FY2020
Arkansas	\$214,144 from Cash for DHT residence; \$1,674,950 from GIF for DHT; \$5,125,921 from A-75; \$8,397,058 from ANCRC
California	Differences between prior year are related to project selection criteria and projects being deferred to out-years due to delays. The other sources include donations and reimbursements which are dependent on funding received from other entities.
Colorado	Revenue does not tie directly to Colorado Parks and Wildlife's capital expenditures in a given fiscal year. Capital expenditures include capital equipment, improvements, acquisitions, and information
Indiana	2019/2020 – State Park Operating Budget = \$42,179,179 parks (Joyce) + \$26,034,833 inns (Tom/Karen) = \$68,214,012
Iowa	Dedicated Funds: Marine Fuel Tax, Park and Institutional Road Fund, REAP, Lake Restoration, Park Infrastructure Fund. Other=Executive Council Funding
Kansas	Road fund, Federal LWCF & NRT, CI for park projects
New Hampshire	in FY20, non essential new projects were postponed.
New York	NOTES: Included in the 2017-18 Budget, NYS Parks received a new appropriation for Capital General Fund. This was included as part of New York State's Financial Plan; specific positions in the Agency were transferred to this Capital appropriation per Division of Budget instructions. NYS information is from 4/1/19-3/31/20, which was not impacted by the COVID-19 Pandemic.
Ohio	Dedicated capital funds are from our state boating fund. These funds were for projects in state parks which directly benefit boaters, such as launch ramps, restrooms at ramps, docks, etc.
Oregon	Table 5b: Fixed Capital Expenditures Dedicated Funds = Land Acquisitions Lottery & Federal Funds Federal Funds = Federal Funds, Facility Investment Program (FIP) Other Sources = FIP: Other Funds and Lottery Funds Data source: Operations Budget Analyst Datamart Query)
Rhode Island	Other funds are RICAP.
Vermont	Fixed capital expenditures information from Frank Spaulding.
Washington	FY20 other sources from local and state grants, i.e., Recreation Conservation Office (RCO)

**Table 5C: Financing – Parks’ Share of State Expenditures
(page 5 of 19)**

Note: State Operating Budget figures were retrieved from the Actual Fiscal 2019 Total State Expenditures (Capital Inclusive) in the State Expenditure Report for 2018-2020, published by the National Association of State Budget Officers (<https://www.nasbo.org/reports-data/state-expenditure-report/state-expenditure-archives>)

STATE	Share of Budget		
	State Operating Budget	State Park Operating Budget	% of State Budget
Alabama	28,834,000,000	40,503,552	0.142%
Alaska	11,148,000,000	13,667,400	0.140%
Arizona	38,691,000,000	53,140,100	0.137%
Arkansas	25,638,000,000	97,830,810	0.382%
California	300,445,000,000	656,110,000	0.218%
Colorado	42,793,000,000	109,035,403	0.255%
Connecticut	34,421,000,000	17,895,550	0.052%
Delaware	11,325,000,000	26,002,600	0.230%
Florida	82,575,000,000	92,889,612	0.112%
Georgia	53,920,000,000	49,445,472	0.092%
Hawaii	15,619,000,000	18,122,000	0.116%
Idaho	8,422,000,000	18,840,600	0.224%
Illinois	71,840,000,000	94,000,000	0.131%
Indiana	34,087,000,000	68,214,012	0.200%
Iowa	23,441,000,000	21,208,684	0.090%
Kansas	16,929,000,000	14,831,500	0.088%
Kentucky	34,837,000,000	99,952,100	0.287%
Louisiana	32,258,000,000	37,235,409	0.115%
Maine	8,813,000,000	9,253,796	0.105%
Maryland	45,121,000,000	45,491,881	0.101%
Massachusetts	59,819,000,000	80,816,000	0.135%
Michigan	59,624,000,000	75,892,400	0.127%
Minnesota	40,844,000,000	105,203,946	0.258%
Mississippi	19,161,000,000	10,871,792	0.057%
Missouri	26,403,000,000	66,929,213	0.253%
Montana	7,173,000,000	11,394,868	0.159%
Nebraska	12,109,000,000	29,420,747	0.243%
Nevada	16,073,000,000	19,474,510	0.121%
New Hampshire	6,224,000,000	42,270,320	0.679%
New Jersey	64,166,000,000	6,485,000	0.010%
New Mexico	19,642,000,000	27,635,500	0.141%
New York	170,875,000,000	227,454,000	0.133%
North Carolina	49,162,000,000	48,478,334	0.099%
North Dakota	6,393,000,000	16,202,928	0.253%
Ohio	71,004,000,000	107,590,618	0.152%
Oklahoma	23,833,000,000	47,362,030	0.199%
Oregon	42,641,000,000	80,767,639	0.189%
Pennsylvania	88,931,000,000	114,393,000	0.129%
Rhode Island	9,736,000,000	14,295,696	0.147%
South Carolina	26,074,000,000	38,936,023	0.149%
South Dakota	4,488,000,000	29,117,118	0.649%
Tennessee	33,826,000,000	90,311,500	0.234%
Texas	121,036,000,000	76,846,340	0.234%
Utah	16,601,000,000	46,381,079	0.234%
Vermont	5,836,000,000	11,464,184	0.196%
Virginia	55,263,000,000	42,934,386	0.078%
Washington	50,512,000,000	89,101,008	0.176%
West Virginia	17,946,000,000	39,557,493	0.220%
Wisconsin	50,243,000,000	16,678,700	0.033%
Wyoming	4,708,000,000	9,505,630	0.202%
Total	2,101,503,000,000	3,207,442,483	
Average			0.179%

**Table 5D: Financing – User Fees
(page 6 of 19)**

STATE	Adult Individual					Passenger Vehicle				
	Areas	Resident	Resident	Non-Resident	Non-Resident	Areas	Resident	Resident	Non-Resident	Non-Resident
		Min	Max	Min	Max		Min	Max	Min	Max
Alabama	12	2.00	5.00	2.00	5.00	-	-	-	-	-
Alaska	-	-	-	-	-	-	-	-	-	-
Arizona	12	2.00	30.00	2.00	30.00	17	5.00	30.00	5.00	30.00
Arkansas	-	-	-	-	-	-	-	-	-	-
California	-	-	-	-	-	141	3.00	15.00	3.00	15.00
Colorado	41	4.00	4.00	4.00	4.00	41	8.00	10.00	8.00	10.00
Connecticut	3	2.00	6.00	2.00	6.00	26	-	-	10.00	22.00
Delaware	-	-	-	-	-	17	4.00	5.00	8.00	10.00
Florida	82	2.00	13.00	2.00	13.00	80	3.00	8.00	4.00	8.00
Georgia	15	3.00	12.00	3.00	12.00	48	5.00	5.00	5.00	5.00
Hawaii	2	1.00	1.00	1.00	1.00	8	5.00	5.00	5.00	5.00
Idaho	-	-	-	-	-	30	5.00	5.00	5.00	5.00
Illinois	-	-	-	-	-	-	-	-	-	-
Indiana	32	1.00	9.00	1.00	9.00	32	7.00	8.00	9.00	12.00
Iowa	-	-	-	-	-	-	-	-	2.00	2.00
Kansas	1	3.50	3.50	3.50	3.50	1	3.50	3.50	3.50	3.50
Kentucky	-	-	-	-	-	-	-	-	-	-
Louisiana	36	3.00	12.00	3.00	12.00	-	-	-	-	-
Maine	27	2.00	7.00	3.00	9.00	-	-	-	-	-
Maryland	-	3.00	5.00	5.00	7.00	27	3.00	5.00	5.00	7.00
Massachusetts	-	-	-	-	-	-	-	-	-	-
Michigan	-	-	-	-	-	-	12.00	17.00	9.00	9.00
Minnesota	-	-	-	-	-	71	5.00	7.00	5.00	7.00
Mississippi	22	50.00	50.00	50.00	50.00	22	374.00	374.00	374.00	374.00
Missouri	-	-	-	-	-	-	-	-	-	-
Montana	34	-	-	4.00	4.00	34	-	-	8.00	8.00
Nebraska	9	2.00	7.00	2.00	7.00	76	6.00	6.00	8.00	8.00
Nevada	1	2.00	3.00	1.00	3.00	21	5.00	10.00	7.00	12.00
New Hampshire	26	4.00	5.00	4.00	5.00	-	-	-	-	-
New Jersey	6	2.00	3.00	2.00	3.00	18	5.00	10.00	10.00	20.00
New Mexico	1	5.00	5.00	5.00	5.00	34	5.00	5.00	5.00	5.00
New York	58	3.00	10.00	3.00	10.00	214	5.00	10.00	5.00	10.00
North Carolina	-	-	-	-	-	3	5.00	7.00	5.00	7.00
North Dakota	-	-	-	-	-	14	7.00	7.00	7.00	7.00
Ohio	-	-	-	-	-	-	-	-	-	-
Oklahoma	5	0.75	5.00	0.75	5.00	4	5.00	10.00	5.00	10.00
Oregon	-	-	-	-	-	25	5.00	5.00	5.00	5.00
Pennsylvania	-	-	-	-	-	-	-	-	-	-
Rhode Island	-	-	-	-	-	8	6.00	7.00	12.00	14.00
South Carolina	32	1.00	12.00	1.00	12.00	-	-	-	-	-
South Dakota	-	8.00	8.00	8.00	8.00	66	8.00	8.00	8.00	8.00
Tennessee	-	-	-	-	-	-	-	-	-	-
Texas	89	2.00	8.00	2.00	8.00	-	-	-	-	-
Utah	8	2.00	2.00	30.00	35.00	32	5.00	15.00	-	-
Vermont	48	4.00	4.00	4.00	4.00	-	-	-	-	-
Virginia	-	-	-	-	-	-	-	-	-	-
Washington	-	-	-	-	-	135	10.00	10.00	10.00	30.00
West Virginia	-	-	-	-	-	1	3.00	3.00	3.00	3.00
Wisconsin	53	15.50	2.00	2.00	2.00	53	3.00	13.00	11.00	16.00
Wyoming	6	4.00	9.00	8.00	9.00	12	7.00	7.00	12.00	12.00

**Table 5D: Financing – User Fees
(page 7 of 19)**

STATE	Adult Individual/Bus					Group/Bus				
	Areas	Resident	Resident	Non-Resident	Non-Resident	Areas	Resident	Resident	Non-Resident	Non-Resident
		Min	Max	Min	Max		Min	Max	Min	Max
Alabama	12	2.00	5.00	2.00	5.00	-	-	-	-	-
Alaska	-	-	-	-	-	-	-	-	-	-
Arizona	10	2.00	18.40	2.00	18.40	-	-	-	-	-
Arkansas	-	-	-	-	-	-	-	-	-	-
California	-	-	-	-	-	-	-	-	-	-
Colorado	-	-	-	-	-	41	10.00	50.00	10.00	50.00
Connecticut	-	-	-	-	-	15	100.00	100.00	150.00	150.00
Delaware	-	-	-	-	-	17	17.00	34.00	34.00	68.00
Florida	87	2.00	2.00	2.00	2.00	87	60.00	60.00	60.00	60.00
Georgia	-	-	-	-	-	48	30.00	50.00	30.00	5.00
Hawaii	-	-	-	-	-	-	-	-	-	-
Idaho	30	3.00	3.00	3.00	3.00	30	25.00	25.00	25.00	25.00
Illinois	-	-	-	-	-	-	-	-	-	-
Indiana	32	1.00	2.00	1.00	2.00	-	-	-	-	-
Iowa	-	-	-	-	-	-	-	-	-	-
Kansas	-	-	-	-	-	24	3.70	5.00	5.00	5.00
Kentucky	-	-	-	-	-	-	-	-	-	-
Louisiana	-	-	-	-	-	36	75.00	75.00	75.00	75.00
Maine	-	-	-	-	-	-	-	-	-	-
Maryland	27	3.00	5.00	5.00	7.00	-	-	-	-	-
Massachusetts	-	-	-	-	-	64	20.00	20.00	20.00	20.00
Michigan	-	-	-	-	-	-	17.00	17.00	17.00	17.00
Minnesota	-	-	-	-	-	-	-	-	-	-
Mississippi	22	50.00	50.00	50.00	50.00	-	-	-	-	-
Missouri	-	-	-	-	-	-	-	-	-	-
Montana	34	2.00	-	4.00	4.00	34	-	-	4.00	4.00
Nebraska	-	-	-	-	-	-	-	-	-	-
Nevada	21	2.00	2.00	2.00	2.00	-	-	-	-	-
New Hampshire	-	-	-	-	-	-	-	-	-	-
New Jersey	-	-	-	-	-	18	65.00	65.00	120.00	120.00
New Mexico	1	5.00	5.00	5.00	5.00	34	15.00	50.00	15.00	50.00
New York	56	3.00	10.00	3.00	10.00	213	50.00	75.00	50.00	75.00
North Carolina	-	-	-	-	-	3	20.00	20.00	20.00	20.00
North Dakota	-	-	-	-	-	14	7.00	7.00	7.00	7.00
Ohio	-	-	-	-	-	-	-	-	-	-
Oklahoma	-	-	-	-	-	5	-	150.00	-	150.00
Oregon	-	-	-	-	-	-	-	-	-	-
Pennsylvania	-	-	-	-	-	-	-	-	-	-
Rhode Island	-	-	-	-	-	-	-	-	-	-
South Carolina	32	1.00	12.00	1.00	12.00	-	-	-	-	-
South Dakota	66	3.00	3.00	3.00	3.00	-	-	-	-	-
Tennessee	-	-	-	-	-	-	-	-	-	-
Texas	89	2.00	8.00	2.00	8.00	-	-	-	-	-
Utah	40	2.00	2.00	-	-	-	-	-	-	-
Vermont	48	2.00	2.00	2.00	2.00	-	-	-	-	-
Virginia	-	-	-	-	-	37	13.00	20.00	13.00	20.00
Washington	-	-	-	-	-	135	10.00	10.00	10.00	10.00
West Virginia	-	-	-	-	-	-	-	-	-	-
Wisconsin	-	-	-	-	-	53	11.00	16.00	15.00	20.00
Wyoming	18	5.00	9.00	5.00	9.00	-	-	-	-	-

**Table 5D: Financing – User Fees
(page 8 of 19)**

STATE	Vehicle Parking					Annual Pass				
	Areas	Resident	Resident	Non-	Non-	Areas	Resident	Resident	Non-	Non-
		Min	Max	Resident	Resident		Min	Max	Resident	Resident
Alabama	2	1.00	1.00	1.00	1.00	-	-	-	-	-
Alaska	61	5.00	10.00	5.00	10.00	56	60.00	60.00	60.00	60.00
Arizona	15	5.00	5.00	5.00	5.00	26	75.00	200.00	75.00	200.00
Arkansas	-	-	-	-	-	-	-	-	-	-
California	-	30.00	100.00	30.00	100.00	-	50.00	195.00	50.00	195.00
Colorado	-	-	-	-	-	41	80.00	120.00	80.00	120.00
Connecticut	26	-	-	10.00	22.00	26	-	-	112.00	112.00
Delaware	-	-	-	-	-	17	17.50	35.00	70.00	70.00
Florida	-	-	-	-	-	97	45.00	120.00	45.00	120.00
Georgia	48	5.00	5.00	5.00	5.00	48	50.00	50.00	50.00	50.00
Hawaii	8	-	-	3.00	5.00	1	10.00	30.00	10.00	30.00
Idaho	-	-	-	-	-	30	10.00	40.00	40.00	40.00
Illinois	-	-	-	-	-	-	-	-	-	-
Indiana	1	2.00	2.00	2.00	2.00	32	50.00	50.00	70.00	70.00
Iowa	-	-	-	-	-	-	-	-	15	40
Kansas	-	-	-	-	-	24	13.75	25.00	25.00	25.00
Kentucky	-	-	-	-	-	-	-	-	-	-
Louisiana	-	-	-	-	-	36	80.00	80.00	80.00	80.00
Maine	-	-	-	-	-	27	55.00	55.00	55.00	55.00
Maryland	-	-	-	-	-	27	75.00	75.00	100.00	100.00
Massachusetts	56	2.00	14.00	2.00	20.00	56	60.00	60.00	120.00	120.00
Michigan	-	-	-	-	-	-	6.00	17.00	34.00	34.00
Minnesota	-	-	-	-	-	71	12.00	35.00	12.00	35.00
Mississippi	-	-	-	-	-	22	50.00	50.00	50.00	50.00
Missouri	-	-	-	-	-	-	-	-	-	-
Montana	-	-	-	-	-	-	-	-	50.00	50.00
Nebraska	-	-	-	-	-	76	30.00	30.00	45.00	45.00
Nevada	-	-	-	-	-	20	-	200.00	-	200.00
New Hampshire	4	1.00	15.00	1.00	15.00	37	60.00	105.00	60.00	120.00
New Jersey	18	5.00	10.00	10.00	20.00	19	50.00	50.00	75.00	75.00
New Mexico	34	5.00	5.00	5.00	5.00	34	40.00	40.00	40.00	40.00
New York	-	-	-	-	-	213	65.00	65.00	-	-
North Carolina	-	-	-	-	-	3	75.00	125.00	75.00	125.00
North Dakota	-	-	-	-	-	14	35.00	35.00	35.00	35.00
Ohio	-	-	-	-	-	-	-	-	-	-
Oklahoma	1	5.00	25.00	20.00	20.00	1	25.00	75.00	25.00	75.00
Oregon	-	-	-	-	-	25	30.00	50.00	30.00	50.00
Pennsylvania	-	-	-	-	-	-	-	-	-	-
Rhode Island	-	-	-	-	-	8	30.00	30.00	60.00	60.00
South Carolina	2	5	50	5	50	47	75.00	99.00	75.00	99.00
South Dakota	-	-	-	-	-	66	36.00	36.00	36.00	36.00
Tennessee	-	-	-	-	-	-	-	-	-	-
Texas	89	2.00	10.00	2.00	10.00	89	70.00	70.00	70.00	70.00
Utah	-	-	-	-	-	45	100.00	100.00	150.00	150.00
Vermont	-	-	-	-	-	48	90.00	90.00	90.00	90.00
Virginia	36	5.00	10.00	5.00	10.00	36	85.00	85.00	85.00	85.00
Washington	-	-	-	-	-	135	30.00	30.00	30.00	30.00
West Virginia	-	-	-	-	-	-	-	-	-	-
Wisconsin	-	-	-	-	-	53	13.00	28.00	38.00	38.00
Wyoming	-	-	-	-	-	18	42.00	48.00	89.00	96.00

**Table 5D: Financing – User Fees
(page 9 of 19)**

STATE	Annual Senior Citizen Pass					Lodging Rental Fees			
	Areas	Resident	Resident	Non-Resident	Non-Resident	Lodge Rooms		Cabins/Cottages	
		Min	Max	Min	Max	Min	Max	Min	Max
Alabama	-	-	-	-	-	45.00	120.00	75.00	249.00
Alaska	-	-	-	-	-	-	-	35.00	100.00
Arizona	-	-	-	-	-	-	-	50.00	300.00
Arkansas	-	-	-	-	-	85.00	243.00	90.00	503.00
California	-	5.00	20.00	5.00	20.00	-	-	40.00	225.00
Colorado	41	70.00	70.00	80.00	120.00	-	-	90.00	270.00
Connecticut	26	-	-	-	-	-	-	50.00	80.00
Delaware	17	18.00	18.00	35.00	35.00	-	-	50.00	271.00
Florida	-	-	-	-	-	129.00	189.00	30.00	160.00
Georgia	48	25	25	25	25	-	-	75.00	454.00
Hawaii	-	-	-	-	-	30.00	50.00	60.00	90.00
Idaho	-	-	-	-	-	100.00	200.00	50.00	190.00
Illinois	-	-	-	-	-	70.00	289.00	70.00	289.00
Indiana	32	25.00	25.00	70.00	70.00	69.99	429.99	40.00	-
Iowa	-	-	-	-	-	-	-	25.00	200.00
Kansas	24	13.75	25.00	25.00	25.00	-	-	35.00	135.00
Kentucky	-	-	-	-	-	-	-	-	-
Louisiana	-	-	-	-	-	155.00	225.00	85.00	175.00
Maine	27	-	-	-	-	-	-	-	-
Maryland	27	10.00	10.00	10.00	10.00	-	-	46.75	200.00
Massachusetts	56	10.00	10.00	-	-	-	-	-	-
Michigan	-	6.00	17.00	34.00	34.00	-	-	-	-
Minnesota	-	-	-	-	-	85.00	145.00	110.00	495.00
Mississippi	-	-	-	-	-	62.00	82.00	35.00	110.00
Missouri	-	-	-	-	-	99.00	219.00	98.00	399.00
Montana	-	-	-	-	-	-	-	54.00	66.00
Nebraska	-	-	-	-	-	65.00	105.00	65.00	475.00
Nevada	20	30.00	30.00	30.00	30.00	-	-	20.00	129.00
New Hampshire	-	-	-	-	-	-	-	50.00	195.00
New Jersey	19	-	-	-	-	-	-	35.00	185.00
New Mexico	35	40.00	40.00	40.00	40.00	-	-	-	-
New York	-	-	-	-	-	-	-	48.00	275.00
North Carolina	-	-	-	-	-	113.00	270.00	25.00	107.00
North Dakota	14	28.00	28.00	-	-	-	-	60.00	125.00
Ohio	-	-	-	-	-	69.00	350.00	60.00	520.00
Oklahoma	3	-	-	-	-	75.00	180.00	45.00	280.00
Oregon	-	-	-	-	-	83.00	139.00	42.00	86.00
Pennsylvania	-	-	-	-	-	60.00	378.00	38.00	285.00
Rhode Island	-	15.00	15.00	30.00	30.00	-	-	35.00	35.00
South Carolina	47	37.50	99.00	75.00	99.00	75.00	125.00	40.00	355.00
South Dakota	-	-	-	-	-	135.00	345.00	55.00	1,800.00
Tennessee	-	-	-	-	-	94.00	500.00	65.00	500.00
Texas	-	-	-	-	-	105.00	170.00	40.00	250.00
Utah	45	50.00	50.00	-	-	31.00	150.00	45.00	90.00
Vermont	48	2.00	2.00	2.00	2.00	85.00	95.00	48.00	110.00
Virginia	36	40.00	40.00	40.00	40.00	291.00	493.00	76.00	196.00
Washington	-	-	-	-	-	-	-	50.00	447.00
West Virginia	-	22.50	22.50	22.50	22.50	-	-	-	-
Wisconsin	53	13.00	13.00	38.00	38.00	-	-	-	-
Wyoming	-	-	-	-	-	-	-	50.00	150.00
Average						92.12	228.83	53.16	275.14

Table 5D: Financing – User Fees
(page 10 of 19)

Campsite Rental Fees

STATE	Improved: 3 H/U		Improved: 2 H/U		Improved: 1 H/U		Improved: No H/U		Primitive	
	Min	Max	Min	Max	Min	Max	Min	Max	Min	Max
Alabama	18.00	55.00	12.00	21.00	-	-	-	-	5.00	12.00
Alaska	-	-	-	-	-	-	-	-	10.00	35.00
Arizona	20.00	50.00	20.00	50.00	20.00	50.00	15.00	25.00	15.00	25.00
Arkansas	36.00	36.00	29.00	29.00	18.00	18.00	14.00	14.00	14.00	14.00
California	-	-	25.00	100.00	-	-	10.00	60.00	10.00	40.00
Colorado	38.00	41.00	38.00	41.00	33.00	36.00	25.00	28.00	15.00	18.00
Connecticut	40.00	52.00	37.00	48.00	-	-	14.00	30.00	14.00	30.00
Delaware	25.00	55.00	20.00	59.00	25.00	45.00	20.00	50.00	20.00	40.00
Florida	16.00	42.00	16.00	42.00	16.00	42.00	-	-	5.00	5.00
Georgia	-	-	23.00	59.00	-	-	-	-	8.00	12.00
Hawaii	-	-	-	-	12.00	30.00	-	-	15.00	20.00
Idaho	26.00	31.00	24.00	29.00	20.00	23.00	12.00	21.00	10.00	13.00
Illinois	10.00	35.00	10.00	35.00	10.00	35.00	-	12.00	-	6.00
Indiana	30.00	46.00	-	-	23.00	35.00	16.00	24.00	12.00	17.00
Iowa	16.00	19.00	-	-	13.00	16.00	8.00	11.00	6.00	9.00
Kansas	25.00	28.00	24.00	26.00	22.00	24.00	13.00	13.00	13.00	13.00
<i>Kentucky</i>	-	-	-	-	-	-	18.00	45.00	15.00	22.00
Louisiana	18.00	33.00	18.00	25.00	18.00	25.00	18.00	18.00	9.00	18.00
Maine	-	-	25.00	45.00	-	-	-	-	15.00	25.00
Maryland	32.50	53.50	27.50	27.50	24.50	38.50	18.50	35.50	10.00	15.00
Massachusetts	-	-	32.00	45.00	23.00	33.00	17.00	27.00	8.00	10.00
Michigan	-	-	-	-	-	-	-	-	-	-
Minnesota	35.00	41.00	32.00	36.00	24.00	32.00	16.00	24.00	14.00	20.00
Mississippi	16.00	28.00	15.00	22.00	15.00	22.00	-	-	15.00	15.00
Missouri	20.00	37.00	13.00	27.00	8.00	27.00	4.00	15.00	5.00	7.00
Montana	-	-	-	-	24.00	34.00	6.00	15.00	6.00	15.00
Nebraska	35.00	37.00	30.00	32.00	25.00	27.00	15.00	17.00	10.00	12.00
Nevada	30.00	30.00	30.00	30.00	-	-	14.00	18.00	14.00	18.00
New Hampshire	40.00	50.00	35.00	35.00	35.00	35.00	25.00	30.00	23.00	23.00
New Jersey	-	-	-	-	20.00	25.00	-	-	17.00	22.00
New Mexico	18.00	18.00	14.00	14.00	14.00	14.00	10.00	10.00	8.00	8.00
New York	27.00	27.00	-	-	21.00	21.00	15.00	15.00	12.00	12.00
North Carolina	25.00	33.00	22.00	30.00	20.00	28.00	17.00	23.00	12.00	12.00
North Dakota	25.00	30.00	20.00	25.00	20.00	25.00	17.00	17.00	12.00	17.00
Ohio	31.00	44.00	-	-	20.00	37.00	16.00	31.00	18.00	25.00
Oklahoma	25.00	45.00	22.00	45.00	20.00	45.00	16.00	25.00	16.00	25.00
Oregon	26.00	33.00	24.00	31.00	-	-	17.00	19.00	10.00	10.00
Pennsylvania	39.00	54.00	34.00	49.00	26.00	41.00	19.00	34.00	15.00	30.00
Rhode Island	-	-	-	-	-	-	-	-	-	-
South Carolina	21.00	65.00	17.00	65.00	13.00	40.00	11.00	62.00	7.00	137.00
South Dakota	-	-	-	-	15.00	40.00	11.00	15.00	11.00	15.00
Tennessee	32.00	75.00	25.00	60.00	21.00	55.00	15.00	50.00	8.00	40.00
Texas	18.00	25.00	15.00	26.00	12.00	20.00	12.00	15.00	5.00	15.00
Utah	25.00	40.00	20.00	40.00	18.00	30.00	15.00	20.00	10.00	15.00
Vermont	-	-	-	-	-	-	19.00	39.00	15.00	18.00
Virginia	40.00	47.00	35.00	46.00	-	-	25.00	35.00	15.00	25.00
Washington	35.00	50.00	30.00	45.00	30.00	45.00	20.00	37.00	12.00	12.00
West Virginia	-	-	-	-	-	-	-	-	-	-
Wisconsin	26.00	42.00	26.00	42.00	26.00	42.00	15.00	27.00	-	-
Wyoming	-	-	-	-	20.00	28.00	10.00	18.00	10.00	18.00
Average	26.84	40.79	23.99	39.47	20.13	32.32	15.22	26.27	11.76	20.98

Table 5D: Financing – Campsite Reservation User Fees
(page 11 of 19)

Campsite Rental									
STATE	Campsite Reservation	Number days in advance	Reservation Fee Charged	Reservation Fee Min	Reservation Fee Max	Fee Non-Refundable	No. People Allowed Per Site	Dogs Allowed Overnight	
Alabama	Yes	365	Yes	4.00	-	Yes	8	Yes	
Alaska	Yes	2	Yes	2.00	8.00	Yes	12	Yes	
Arizona	Yes	365	Yes	5.00	25.00	Yes	6	Yes	
Arkansas	Yes	365	No	-	-	-	8	Yes	
California	Yes	210	Yes	8.00	8.00	Yes	8	Yes	
Colorado	Yes	180	No	-	-	-	6	Yes	
Connecticut	Yes	335	Yes	9.00	9.00	Yes	6	Yes	
Delaware	Yes	365	Yes	4.00	4.00	Yes	8	Yes	
Florida	Yes	334	Yes	6.70	6.70	Yes	8	Yes	
Georgia	Yes	334	No	-	-	Yes	6	Yes	
Hawaii	Yes	See notes	Yes	1.20	45.00	Yes	10	Yes	
Idaho	Yes	274	Yes	10.00	25.00	Yes	8	Yes	
Illinois	Yes	108	Yes	5.00	5.00	Yes	8	Yes	
Indiana	Yes	180	Yes	5.00	5.00	Yes	6	Yes	
Iowa	Yes	90	Yes	4.00	6.00	Yes	6	Yes	
Kansas	Yes	180	Yes	3.00	10.00	Yes	8	Yes	
<i>Kentucky</i>	<i>Yes</i>	<i>365</i>	<i>Yes</i>	<i>6.00</i>	<i>6.00</i>	<i>Yes</i>	<i>8</i>	<i>Yes</i>	
Louisiana	Yes	396	Yes	6.00	6.00	Yes	8	Yes	
Maine	Yes	224	Yes	5.00	5.00	Yes	6	Yes	
Maryland	Yes	365	Yes	4.75	6.25	Yes	6	Yes	
Massachusetts	Yes	180	Yes	-	-	Yes	4	Yes	
Michigan	Yes	183	Yes	8.00	10.00	Yes	6	Yes	
Minnesota	Yes	365	Yes	7.00	70.00	Yes	6	Yes	
Mississippi	Yes	730	Yes	10.00	10.00	Yes	8	Yes	
Missouri	Yes	365	Yes	8.50	8.50	Yes	6	Yes	
Montana	Yes	182	Yes	10.00	10.00	Yes	8	Yes	
Nebraska	Yes	180	Yes	8.50	8.50	Yes	8	Yes	
Nevada	-	-	-	-	-	-	8	Yes	
New Hampshire	Yes	335	Yes	6.50	6.50	Yes	-	Yes	
New Jersey	Yes	334	Yes	5.00	5.00	Yes	6	Yes	
New Mexico	Yes	180	Yes	4.00	12.00	Yes	9	Yes	
New York	Yes	270	Yes	9.00	9.00	Yes	6	Yes	
North Carolina	Yes	335	Yes	3.00	3.00	Yes	6	Yes	
North Dakota	Yes	95	Yes	5.80	9.00	Yes	6	Yes	
Ohio	Yes	180	Yes	6.50	6.50	Yes	6	Yes	
Oklahoma	Yes	335	Yes	8.00	20.00	Yes	4	Yes	
Oregon	Yes	275	Yes	8.00	8.00	Yes	8	Yes	
Pennsylvania	Yes	330	Yes	6.50	6.50	Yes	5	Yes	
Rhode Island	Yes	365	Yes	9.00	9.00	Yes	6	Yes	
South Carolina	Yes	397	No	-	-	No	6	Yes	
South Dakota	Yes	90	Yes	-	7.70	Yes	6	Yes	
Tennessee	Yes	365	Yes	5.00	5.00	Yes	6	Yes	
Texas	Yes	152	-	-	-	Yes	8	Yes	
Utah	Yes	120	Yes	8.00	12.00	Yes	8	Yes	
Vermont	Yes	335	Yes	8.00	8.00	Yes	8	Yes	
Virginia	Yes	334	Yes	5.00	5.00	Yes	6	Yes	
Washington	Yes	274	Yes	8.00	10.00	Yes	8	Yes	
West Virginia	Yes	365	No	-	-	No	10	Yes	
Wisconsin	Yes	334	Yes	7.75	7.75	Yes	6	Yes	
Wyoming	Yes	120	Yes	4.00	8.00	Yes	10	Yes	
# Yes/Average	49	274	43	6.23	11.16	45	7	50	

Table 5D: Financing – User Fees
(page 12 of 19)
Explanatory Notes

STATE	NOTES
Alaska	Reservation transaction fee for campsites is \$2 per night, with a cap of \$8 max. Cabins have their own fixed, non-refundable transaction fee of \$8.05 per transaction.
Arizona	If a vehicle contains more than 4 adults at a park that assesses a "per vehicle" user fee, each additional adult is \$3.00. This number is included in this category above, whereas it used to be counted in "per vehicle" category. Also, individuals who walk up to the gate and individuals on bicycle are charged \$3 entry fee at parks that typically charge by vehicle. >"Per Adult Person on bus" category now includes per adult ticket price for commercial group tours to Kartchner Caverns. >McFarland State Historic Park is not included in the fee Per Adult Person as they now serve as the Visitor Center to the Town of Florence and no fee is charged. >During FY13 Yuma Quartermaster Depot State Historic Park began charging a fee Per Adult Person to enter the park.
Arkansas	Arkansas does not issue an Annual Pass for park entry
California	5d.1 - Per Adult Person: Per adult person entry/tour fees. 5d.2 - Vehicle Parking: Vehicle day use fees collected, including Off-Highway Motor Vehicle (OHMVR) units. 5d.5 - Bus Parking: Changed "vehicle" parking to represent fees charged for bus parking. Total number of units accomodating small and/or large buses not available 5d.6 - Annual Day Use Pass type: California Explorer Vehicle Day Use Annual Pass - Price: \$195.00 Number of Park Units Accepting: 134, Golden Poppy Vehicle Day Use Annual Pass - Price: \$125.00 Number of Park Units Accepting: 112, Tahoe Regional Vehicle Day Use Annual Pass - Price: \$75.00 Number of Park Units Accepting: 5, Historian Passport Day Use Admission Annual Pass - Price: \$50.00 Number of Park Units Accepting: 33, Boat Use Annual Pass - Price: \$100.00 Number of Park Units Accepting: 15, Off Highway Vehicle Annual Day Use Pass - Price: \$50.00 Number of Park Units Accepting: 7, Oversized Vehicle Pass Sticker (Oversized vehicles described as 25 feet or over in length or 9 feet or wider in width will be charged an Oversized Vehicle Fee (OVF) equal to and in addition to the park's vehicle day use fee. A vehicle pulling a trailer will also be considered an oversized vehicle except if towing a boat trailer with a valid Boat Use Annual Pass sticker or having paid a boat use fee. Not all parks can accommodate oversized vehicles and possession of the Oversized Vehicle Pass sticker does not guarantee an oversized vehicle can be physically accommodated at all parks.) 5d.7 - Annual Senior Citizen Pass - for persons 62 years of age older: Golden Bear Discount Pass with income restrictions for eligibility. Annual cost/fee is \$5.00; entitles the bearer and spouse or registered domestic partner entry to most California State Parks operated units where vehicle day use fees are collected, at no charge, Limited Use Golden Bear Pass - for persons 62 years of age or older without income restrictions for eligibility. Annual cost/fee is \$20.00; entitles the holder and spouse or registered domestic partner entry to most California State Parks operated units during non-peak season where vehicle day use fees are collected, at no charge, Senior Citizen Discount - permits year-round \$1.00 discount for vehicle day use and a \$2.00 discount for family camping in state-operated parks regardless of income status without the need to purchase any pass. 5d.8 - No state operated lodge rooms. 5d.11 - Improved Campsite with hook-ups; water and electrical hookups. Sewer hookups not provided at campsite, but dump station may be available inside the campground. 5d.13 & 5d.14 - Primitive & Improved Campsite fee applicable to "Drive-In" sites. 5d.16 - Seven months in advance on the first of the month on-sale days. 5d.22 - Select camping loops in various park units allow dogs.
Colorado	Colorado Parks and Wildlife does not offer a senior non-resident annual parks pass, therefore, non-resident seniors would pay the same price as a regular annual parks pass which is either \$80 or \$120 depending on the pass selected.
Florida	Reservation Fee Min and Max is \$6.70 (form is rounding it to \$7.00).
Hawaii	Camping Reservations in-advance varied from 365 to 14 with impacts of covid., RE: Dogs Allowed Overnight = Service Animals only
Idaho	Those who have a valid Idaho RV sticker are not charged a reservation fee
Indiana	No entrance fee or transaction fee changes in 2019/2020. Started same day reservations allowed during spring 2019 pandemic, until 2pm date of arrival for camping only.
Iowa	Resort lodge, cabins, and campsite fees are are not included in the fee range as they are now operated by a private concession operation. Camping reservations can be made 3 months in advance, not 90 days.
Kentucky	<i>FY18-19 data are used.</i>
Maine	Maine State Parks also sell system-wide annual vehicle passes covering occupants of the passholder's vehicle (17 passenger max). Vehicle passes are sold for \$105 while a senior version costs \$45. Maine residents 65+ receive free admission (individual only).
Missouri	Minimum price reflects off-season rates less a \$2.00 discount (applicable only to persons with disabilities, senior citizens, and military). The reservation window changed from six months in advance of arrival to one year in advance of arrival, effective on June 30, 2020.
New Hampshire	Bus Pass program was suspended due to COVID-19.
New York	Notes: NYS information is from 4/1/19-3/31/20, which was not impacted by the COVID 19 Pandemic.
North Dakota	Dogs allowed, but must be leashed, accomponied, and cleaned up after.
Oregon	Table 5d Notes: Annual pass "minimum" is for the 12-month parking pass; residents and non-residents pay the same price. The "maximum" is for the 24-month parking pass. Again, there is no difference in price for residents vs. non-residents for the 24-month parking pass. The Department offers a \$5 discount on the 12-month parking pass during the month of December. Improved campsite 3 HU = Full Improved campsite 2 HU = Electric Improved campsite no HU= Tent Primitive = primitive.
Pennsylvania	Pennsylvania started charging a holiday rate for peak summer holiday weekends. Campsite electric rate increased by fifty cents.
Rhode Island	Min/Max fee is 8.75
South Carolina	Restructured admission prices
Vermont	Information from Kaitlin Alford and website. Lodge Room min/max from VSP website, Seyon Lodge Fees page. For improved campsite cost, base price for campsite is the minimum and Burton Island lean-to is the maximum. Primitive campsite refers to Green River Reservoir pricing. Cabins/cottage min/max from VSP website Fees page (max = Perry Merrill at Ricker Pond (\$770 per week price divided by 7.) Fee increases occurred in October
Virginia	We discontinued non resident rates for parking in 2020
Wyoming	Wyoming charges per-person for entrance at historic sites and per-vehicle for entrance and camping at parks; with differing resident and non-resident rates. We offer annual day use and annual camping permits (camping to residents only) that are tied to a specific vehicle.

Table 5E: Financing – Revenue Sources
(page 13 of 19)

Revenue Generated By Source

STATE	Entrance Fees	Camping Fees	Cabins/ Cottages	Lodges	Group Facilities
Alabama	5,613,177	11,983,576	4,204,258	3,186,521	198,074
Alaska	1,503,147	577,555	785,537	-	-
Arizona	8,808,042	9,754,808	-	-	-
Arkansas	843,327	4,612,755	3,636,666	3,109,197	187,610
California	-	-	-	-	-
Colorado	22,881,734	13,487,898	688,765	-	230,517
Connecticut	1,518,860	1,168,132	35,523	-	-
Delaware	4,299,741	3,630,690	911,331	-	91,031
Florida	23,450,558	15,583,416	2,530,238	-	74,499
Georgia	6,521,138	13,694,990	10,151,748	-	206,277
Hawaii	756,872	678,379	240,183	-	-
Idaho	4,437,700	3,619,300	1,167,500	-	-
Illinois	-	5,532,343	-	650,457	-
Indiana	12,173,366	15,847,430	1,605,521	13,214,668	119,107
Iowa	36,644	3,503,535	692,096	-	2,140
Kansas	3,905,295	6,968,385	1,280,603	-	8,795
Kentucky	-	3,579,768	4,329,758	9,125,767	-
Louisiana	1,327,365	3,102,502	3,023,156	271,974	317,868
Maine	3,605,890	669,316	-	-	-
Maryland	5,902,750	3,999,726	1,040,961	-	335,716
Massachusetts	2,804,295	3,891,673	48,584	-	-
Michigan	21,851,805	34,349,672	160,683	-	-
Minnesota	8,024,881	7,196,330	1,561,919	66,947	466,814
Mississippi	398,888	3,406,369	1,747,274	178,144	183,661
Missouri	-	6,784,839	-	-	-
Montana	239,005	1,308,473	49,143	-	-
Nebraska	7,766,111	6,476,415	3,894,611	-	-
Nevada	-	-	-	-	-
New Hampshire	10,670,999	2,266,630	-	-	750,572
New Jersey	-	1,517,638	-	-	-
New Mexico	1,319,619	2,238,793	-	-	-
New York	47,026,404	14,353,844	5,474,791	-	-
North Carolina	1,494,893	4,328,379	277,651	208,504	204,358
North Dakota	1,056,830	1,923,023	294,688	-	-
Ohio	-	13,575,573	3,665,204	-	194,994
Oklahoma	203,176	8,236,443	4,563,528	4,833,755	-
Oregon	3,903,144	17,748,292	-	53,324	-
Pennsylvania	-	10,726,330	3,759,209	579,942	182,247
Rhode Island	-	-	-	-	-
South Carolina	7,870,619	12,389,172	3,476,820	388,500	19,235
South Dakota	7,026,706	7,190,868	1,469,872	-	-
Tennessee	-	7,696,455	6,465,681	2,743,099	327,563
Texas	15,880,142	17,908,257	-	-	-
Utah	12,248,805	6,705,225	-	-	-
Vermont	1,215,269	2,973,748	432,768	53,495	-
Virginia	6,866,383	5,185,284	4,137,222	-	-
Washington	21,515,423	17,261,366	2,220,063	-	718,484
West Virginia	204,840	2,597,962	4,176,152	5,681,146	24,777
Wisconsin	12,663,083	8,393,846	-	-	-
Wyoming	1,373,919	1,102,156	98,306	-	36,492
Average	7,530,271	7,483,565	2,341,611	2,771,590	221,856

Table 5E: Financing – Revenue Sources
(page 14 of 19)

Revenue Generated By Source						
STATE	Restaurants	Concessions	Beaches/ Pools	Golf Courses	Other	Total Operations
Alabama	2,466,982	2,947,850	48,818	2,047,901	7,782,318	38,012,493
Alaska	-	-	-	-	1,159,697	4,025,936
Arizona	-	359,664	-	-	1,945,752	20,868,266
Arkansas	3,788,767	81,896	147,358	330,717	5,545,582	22,283,875
California	-	-	-	-	-	-
Colorado	-	2,186,384	-	-	67,198,871	106,674,169
Connecticut	-	20,173	-	-	-	2,742,688
Delaware	-	710,213	428,904	-	9,888,346	19,960,256
Florida	-	5,102,069	-	-	7,510,144	54,250,924
Georgia	235,220	3,697,455	-	1,751,105	4,799,912	41,057,845
Hawaii	-	1,500,436	-	-	2,419,497	5,595,367
Idaho	-	-	30,200	-	3,348,900	12,603,600
Illinois	85,902	975,394	20,864	-	-	-
Indiana	8,050,333	752,269	453,185	1,567,571	14,166,156	67,949,606
Iowa	-	72,298	-	-	716,157	5,022,870
Kansas	-	225,475	-	-	339,972	12,728,524
Kentucky	9,160,119	134,722	247,755	2,247,704	9,145,499	37,971,092
Louisiana	-	-	47,980	-	-	8,090,845
Maine	43,234	20,293	-	-	703,047	5,041,780
Maryland	-	1,512,244	-	-	-	12,791,397
Massachusetts	-	2,588,383	1,800	1,080,113	4,245,268	14,660,116
Michigan	-	1,193,865	-	-	2,430,480	59,986,505
Minnesota	624,620	78,487	-	-	7,595,213	25,615,211
Mississippi	-	91,059	253,839	-	284,190	6,543,424
Missouri	-	2,191,717	-	-	2,378,920	11,355,476
Montana	-	51,496	-	-	937,725	2,585,842
Nebraska	316,386	2,643,842	746,127	-	11,427,547	33,271,040
Nevada	-	58,940	-	-	454,222	513,161
New Hampshire	-	6,161,178	2,024,151	-	1,336,436	23,209,966
New Jersey	-	363,635	-	-	6,464,406	8,345,679
New Mexico	-	319,580	-	-	309,941	4,187,933
New York	-	26,876,453	3,150,766	14,234,239	7,031,179	118,147,676
North Carolina	78,215	1,213,934	268,811	-	2,527,227	10,601,972
North Dakota	-	967,217	-	-	858,426	5,100,184
Ohio	-	1,056,616	-	257,559	8,169,539	26,919,485
Oklahoma	-	1,331,044	42,471	2,357,258	3,670,505	25,238,180
Oregon	46,532	69,786	-	-	675,776	22,496,854
Pennsylvania	-	2,377,505	826,959	-	6,623,393	25,075,583
Rhode Island	-	710,190	78,230	218,833	-	1,007,253
South Carolina	309,265	4,321,619	-	653,687	1,431,020	30,859,938
South Dakota	-	3,105,151	-	-	9,611,768	28,404,366
Tennessee	2,806,707	664,121	300,642	5,828,331	8,079,786	34,912,385
Texas	-	2,925,529	-	-	-	36,713,928
Utah	-	1,286,258	-	3,727,231	-	23,967,519
Vermont	-	99,274	-	-	2,621,367	7,395,921
Virginia	472,292	2,723,620	700,064	-	2,614,269	22,699,134
Washington	-	311,356	-	-	5,684,271	47,710,965
West Virginia	2,597,039	272,825	348,377	636,239	6,992,520	23,531,877
Wisconsin	-	242,505	24,927	112,929	473,911	21,911,201
Wyoming	-	25,627	-	-	1,173,751	3,810,251
Average	2,072,107	1,883,079	485,344	2,470,094	5,780,307	24,676,053

Table 5E: Financing – Revenue Sources
(page 15 of 19)
Explanatory Notes

STATE	NOTES
Colorado	Other includes revenue from registrations, licenses/passes/fees/permits, federal and state grants,
Hawaii	Other = Parking Fees Revenue
Indiana	2019/20 inns portion of "all other operations was \$3.7M. Parks portion was \$10.45M other operations (and resale).
Iowa	No revenue is reported for resort as it is under a concession operation and any revenue will be reflected in the concession revenue category. Other operations includes day-use lodge and shelter rental fees, special event fees, dock management area fees, dock slip rental, damage deposits, nonresident user permit fees, and reservation transaction fees.
Missouri	Camping and lodging were closed from March 27, 2020 to May 17, 2020 due to the COVID-19 pandemic. Camping was open from May 18, 2020 to June 30, 2020 with a 50% occupancy limit.
Nebraska	10.3 million dollar Game and Parks Foundation Capital Donation. Revenue for cabins, restaurants, concessions, and pool operations affected by Covid.
New York	Notes: NYS information is from 4/1/19-3/31/20, which was not impacted by the COVID 19 Pandemic.
North Dakota	Included annual and daily passes as part of entrance fees. Other includes interpretive programming fees, reservation fees, and special event revenues.
Ohio	Concession operations includes only commission payments received from all concessionaires, including all lodge operations. Golf course operations were transitioned to concession operated for part of the fiscal year.
Oregon	Overnight includes cabins/yrurts but does not include Boat Moorage. Concession operations includes Boat Moorage (Agency Object 8630) Lodge Room: Silver Falls, Wolf Creek Inn, and Frenchglen (closed in winter) Restaurants: Silver Falls, Wolf Creek Inn , and Frenchglen (closed in winter).
Pennsylvania	Golf course revenue is included in concession operations. Decline in revenue attributed to closures in March/April 2020 due to COVID19 Pandemic and the swimming pool closure for the entire season at Codorus State Park.
South Dakota	Although South Dakota includes restaurants, marinas and lodges in the Facility Inventory in Table 2, we do not include the concessioners' revenue in Table 5E - Revenue Sources. South Dakota's revenue from concessioners' leases, franchise fees and other sources is included in the Concessions column of this table.
Tennessee	Swimming pools were closed for the summer of 2020.
Vermont	Information provided by Kaitlin Alford and Kristin Freeman. All other operations includes license fees, ski leases, timber sales, fines & penalties, donations, boat rentals, boat rentals taxed, firewood, gas, fishing, miscellaneous, resale items, shower, soda, ice, and transportation.
Virginia	Parking & Admission are included in entrance fees, not sure if that is true in prior years

Table 5F: Financing – Revenue Sources
(page 16 of 19)

Registration Fees									
STATE	Park User & Entrance Fees & Permits	Motor Fuel Tax	Snow-mobiles	OHV's/ ATV's	Boats	Lottery	Real Estate Transfer Tax	Motor Vehicle Plates / Permits	Hunting Licenses/ Fines
Alabama	No	No	No	No	Yes	No	No	Yes	No
Alaska	Yes	No	No	No	No	No	No	No	No
Arizona	Yes	Yes	No	Yes	Yes	No	No	No	No
Arkansas	No	No	No	No	No	No	Yes	No	No
California	Yes	Yes	No	Yes	Yes	No	No	No	No
Colorado	Yes	Yes	Yes	Yes	Yes	Yes	No	Yes	No
Connecticut	No	No	No	No	No	No	No	Yes	No
Delaware	Yes	No	No	No	No	No	Yes	No	No
Florida	Yes	No	No	No	No	No	Yes	No	No
Georgia	Yes	No	No	No	No	No	No	No	No
Hawaii	Yes	No	No	No	No	No	No	Yes	No
Idaho	Yes	Yes	No	No	No	No	No	Yes	No
Illinois	Yes	Yes	Yes	Yes	Yes	No	No	Yes	Yes
Indiana	Yes	No	Yes	Yes	Yes	No	No	No	Yes
Iowa	Yes	Yes	Yes	Yes	Yes	Yes	No	Yes	No
Kansas	Yes	No	No	No	No	No	No	No	No
<i>Kentucky</i>	<i>Yes</i>	<i>No</i>	<i>No</i>	<i>No</i>	<i>No</i>	<i>No</i>	<i>No</i>	<i>No</i>	<i>No</i>
Louisiana	Yes	No	No	No	No	No	No	No	No
Maine	Yes	No	No	No	No	No	No	Yes	No
Maryland	Yes	No	No	Yes	No	No	Yes	No	No
Massachusetts	Yes	No	No	No	No	No	No	No	No
Michigan	Yes	No	No	Yes	No	No	No	No	No
Minnesota	Yes	Yes	Yes	Yes	Yes	Yes	No	Yes	No
Mississippi	Yes	No	No	No	No	No	No	No	No
Missouri	Yes	No	No	No	No	No	No	No	No
Montana	Yes	Yes	Yes	Yes	Yes	No	No	No	No
Nebraska	Yes	No	Yes	Yes	Yes	No	No	Yes	No
Nevada	Yes	Yes	No	No	No	No	No	No	No
New Hampshire	Yes	Yes	Yes	Yes	No	No	No	Yes	No
New Jersey	Yes	No	No	No	No	No	No	No	No
New Mexico	Yes	Yes	No	No	Yes	No	No	No	No
New York	Yes	No	Yes	No	Yes	No	Yes	No	No
North Carolina	Yes	No	No	No	No	No	Yes	No	No
North Dakota	Yes	Yes	Yes	Yes	No	No	No	No	No
Ohio	Yes	No	No	No	Yes	No	No	No	No
Oklahoma	No	No	No	No	No	No	No	No	No
Oregon	Yes	Yes	No	Yes	No	Yes	No	Yes	No
Pennsylvania	No	No	Yes	No	No	No	Yes	No	No
Rhode Island	No	No	No	No	No	No	No	No	No
South Carolina	Yes	No	No	No	No	No	No	No	No
South Dakota	Yes	Yes	Yes	No	Yes	No	No	No	No
Tennessee	No	No	No	No	No	No	Yes	Yes	No
Texas	Yes	No	No	Yes	No	No	No	Yes	No
Utah	Yes	Yes	Yes	Yes	Yes	No	No	No	No
Vermont	Yes	No	No	No	No	No	No	No	No
Virginia	Yes	No	No	No	No	No	No	No	No
Washington	Yes	Yes	Yes	Yes	Yes	No	No	Yes	No
West Virginia	Yes	No	No	No	No	Yes	No	No	No
Wisconsin	Yes	No	Yes	Yes	No	No	No	No	No
Wyoming	Yes	Yes	Yes	Yes	No	No	No	No	No
# Yes	43	17	16	19	16	5	8	15	2

Table 5F: Financing – Revenue Sources
(page 17 of 19)

State Taxes/Fees Dedicated to Park & Recreation							
STATE	Employee Housing Payments	Lease Permits (Ski, Lake, Ag.)	Donations	Publications & Souvenir Sales	Concessionaires Licensing	Tobacco Products Tax	Sporting Goods Tax
Alabama	No	No	No	No	No	Yes	No
Alaska	Yes	No	No	No	No	No	No
Arizona	Yes	No	Yes	Yes	Yes	No	No
Arkansas	No	Yes	Yes	Yes	Yes	No	Yes
California	Yes	Yes	Yes	Yes	No	Yes	No
Colorado	Yes	Yes	Yes	Yes	Yes	No	No
Connecticut	No	No	No	No	No	No	No
Delaware	Yes	Yes	Yes	Yes	Yes	No	No
Florida	Yes	Yes	Yes	Yes	No	No	No
Georgia	No	Yes	Yes	Yes	Yes	No	No
Hawaii	No	No	Yes	Yes	Yes	No	No
Idaho	No	Yes	Yes	Yes	Yes	No	No
Illinois	Yes	Yes	Yes	No	Yes	No	Yes
Indiana	No	Yes	Yes	Yes	Yes	Yes	No
Iowa	No	Yes	Yes	No	Yes	No	No
Kansas	No	Yes	Yes	Yes	Yes	No	No
<i>Kentucky</i>	<i>Yes</i>	<i>Yes</i>	<i>Yes</i>	<i>Yes</i>	<i>Yes</i>	<i>No</i>	<i>No</i>
Louisiana	No	No	Yes	Yes	No	No	No
Maine	Yes	Yes	Yes	Yes	No	No	No
Maryland	Yes	Yes	Yes	Yes	Yes	No	No
Massachusetts	Yes	Yes	Yes	No	Yes	No	No
Michigan	Yes	Yes	Yes	Yes	Yes	No	No
Minnesota	Yes	No	Yes	Yes	Yes	No	Yes
Mississippi	No	Yes	No	No	Yes	No	No
Missouri	Yes	Yes	Yes	Yes	Yes	No	No
Montana	Yes	Yes	Yes	Yes	Yes	No	No
Nebraska	No	Yes	Yes	Yes	Yes	Yes	Yes
Nevada	No	No	Yes	Yes	No	No	No
New Hampshire	No	Yes	Yes	Yes	Yes	No	No
New Jersey	No	Yes	Yes	Yes	Yes	No	No
New Mexico	Yes	Yes	Yes	No	Yes	No	No
New York	Yes	Yes	Yes	No	Yes	No	No
North Carolina	Yes	No	Yes	Yes	No	No	No
North Dakota	Yes	Yes	Yes	Yes	Yes	No	No
Ohio	No	Yes	Yes	Yes	Yes	No	No
Oklahoma	Yes	No	Yes	Yes	Yes	No	No
Oregon	Yes	Yes	Yes	Yes	Yes	No	No
Pennsylvania	No	No	Yes	No	Yes	No	No
Rhode Island	No	No	Yes	No	No	No	No
South Carolina	No	No	Yes	Yes	Yes	No	No
South Dakota	Yes	Yes	Yes	Yes	Yes	No	Yes
Tennessee	Yes	Yes	Yes	Yes	Yes	No	No
Texas	Yes	Yes	Yes	Yes	Yes	No	Yes
Utah	No	No	Yes	Yes	Yes	No	No
Vermont	No	Yes	Yes	Yes	Yes	No	No
Virginia	No	Yes	Yes	Yes	Yes	No	No
Washington	Yes	Yes	Yes	Yes	Yes	No	No
West Virginia	Yes	No	Yes	Yes	Yes	No	No
Wisconsin	Yes	Yes	Yes	Yes	Yes	No	Yes
Wyoming	Yes	Yes	Yes	Yes	Yes	No	No
# Yes	28	35	46	38	40	4	7

Table 5F: Financing – Revenue Sources
(page 18 of 19)

State Taxes/Fees Dedicated to Park & Recreation

STATE	Petroleum	Sales Tax	Investment	State Land	Other	General
	Products			Board		
	Tax	Tourism	Interest	Trusts		
Alabama	No	No	No	No	Yes	No
Alaska	No	No	No	No	Yes	Yes
Arizona	No	No	Yes	No	Yes	No
Arkansas	Yes	No	Yes	Yes	Yes	No
California	Yes	No	Yes	No	No	Yes
Colorado	Yes	No	Yes	Yes	Yes	No
Connecticut	No	No	No	No	Yes	Yes
Delaware	No	No	Yes	No	No	Yes
Florida	No	No	Yes	No	No	Yes
Georgia	No	Yes	No	No	Yes	Yes
Hawaii	No	Yes	Yes	No	Yes	Yes
Idaho	No	No	Yes	No	No	Yes
Illinois	No	Yes	No	No	No	Yes
Indiana	No	Yes	Yes	No	No	Yes
Iowa	No	No	No	No	No	Yes
Kansas	No	No	No	No	Yes	Yes
<i>Kentucky</i>	<i>No</i>	<i>No</i>	<i>No</i>	<i>No</i>	<i>No</i>	<i>Yes</i>
Louisiana	No	No	No	No	Yes	No
Maine	No	No	Yes	No	No	Yes
Maryland	No	No	No	No	No	Yes
Massachusetts	No	No	No	No	Yes	Yes
Michigan	No	No	Yes	No	Yes	Yes
Minnesota	No	No	No	No	Yes	Yes
Mississippi	No	No	Yes	No	No	Yes
Missouri	No	No	Yes	No	Yes	No
Montana	No	Yes	Yes	No	No	No
Nebraska	No	Yes	Yes	No	No	Yes
Nevada	No	No	No	No	No	No
New Hampshire	No	No	No	No	No	Yes
New Jersey	No	No	No	No	No	Yes
New Mexico	No	No	No	No	No	Yes
New York	No	No	No	No	No	Yes
North Carolina	No	No	No	No	No	Yes
North Dakota	No	No	No	No	No	Yes
Ohio	No	No	No	No	No	Yes
Oklahoma	No	No	No	No	No	Yes
Oregon	No	No	Yes	No	Yes	No
Pennsylvania	No	No	No	No	Yes	Yes
Rhode Island	No	No	No	No	No	Yes
South Carolina	No	No	No	No	Yes	Yes
South Dakota	Yes	Yes	No	No	Yes	Yes
Tennessee	No	No	No	No	No	Yes
Texas	No	No	No	No	Yes	Yes
Utah	No	No	No	No	No	Yes
Vermont	No	No	No	No	No	Yes
Virginia	No	No	No	No	Yes	Yes
Washington	No	No	No	No	Yes	Yes
West Virginia	No	No	No	No	No	Yes
Wisconsin	No	No	No	No	No	No
Wyoming	No	No	No	No	Yes	Yes
# Yes	4	7	16	2	22	40

Table 5F: Financing – Revenue Sources
(page 19 of 19)
Explanatory Notes

STATE	NOTES
Arkansas	Other is amendment 75, Arkansas's 1/8 cent Conservation Tax
Colorado	Receive less than 1% of total revenue from State General Fund to support free entrance for veterans during the month of August. "Petroleum products tax" refers to severance tax on oil and gas.
Connecticut	Passport to the Park Program implemented in 2018 (motor vehicle registration fee)
Iowa	Snowmobile and vehicle plate revenue is very minimal to overall park funding. The nonresident user permit fee is for 2 state parks and is a pilot with a sunset date.
Kansas	The Park Passport is available to purchase at the Motor Vehicle Office at a reduced fee. It is a discounted permit and have to opt in to get it.
<i>Kentucky</i>	<i>AIX Project Staff Note: Some data items were not provided by the state. FY2018-19 data were used.</i>
Missouri	Other consists of endowment funds.
New Hampshire	The Bureau of Historic Sites and a portion of the Development, Design & Maintenance Office are partially funded through the State's General Fund account.
New York	Notes: NYS information is from 4/1/19-3/31/20, which was not impacted by the COVID-19 Pandemic.
Ohio	While Ohio doesn't charge an entrance fee, we do have some permit fees (i.e. camping permits, special activity permits) that are dedicated sources of funding for Ohio State Parks.
Oregon	Other dedicated funds include firewood and ice sales, and rentals of bicycles, kayaks, etc. A portion of timber sales are included in other dedicated funds.
Vermont	No change from previous year.

**Table 6A: Personnel – Number of Positions
(page 1 of 9)**

The number of staff positions is reported in this table by three categories: (1) whether they are full-time, part-time (regular year-around staffers that work less than a full forty-hour week) or seasonal (those individuals hired for temporary service during peak-use seasons) employees; (2) whether they work in the central office or in the field and (3) whether they are regarded as “park professionals” (those employees engaged primarily in work specialized to the needs of state parks) or not (those doing non-park-specialized work, such as clerical, fiscal, legal, etc. States that provided “0” or no data are excluded from averages.

STATE	Park Professional			Other Staff		
	Full-Time	Part-Time	Seasonal	Full-Time	Part-Time	Seasonal
Alabama	13	2	-	-	-	-
Alaska	24	-	-	9	-	2
Arizona	13	1	-	33	-	1
Arkansas	13	-	-	86	1	-
California	559	5	-	-	-	-
Colorado	30	-	-	35	-	49
Connecticut	10	-	-	1	-	-
Delaware	31	-	-	3	46	60
Florida	67	-	-	12	38	-
Georgia	3	-	-	32	11	3
Hawaii	16	-	-	5	-	-
Idaho	15	-	17	43	3	-
Illinois	6	-	-	5	-	-
Indiana	17	1	-	6	-	3
Iowa	6	-	-	1	-	-
Kansas	4	-	-	-	-	-
<i>Kentucky</i>	<i>684</i>	<i>3</i>	<i>361</i>	<i>-</i>	<i>-</i>	<i>-</i>
Louisiana	9	-	-	21	6	-
Maine	10	-	-	3	-	1
Maryland	20	-	-	-	-	-
Massachusetts	87	5	22	20	8	100
Michigan	22	-	-	83	-	-
Minnesota	82	10	-	7	-	-
Mississippi	4	1	-	6	-	-
Missouri	70	-	-	30	-	3
Montana	14	-	-	1	1	-
Nebraska	4	-	-	6	-	3
Nevada	18	-	-	10	-	1
New Hampshire	17	1	-	4	-	-
New Jersey	-	-	-	-	-	-
New Mexico	12	-	1	16	-	-
New York	15	-	-	184	-	64
North Carolina	35	-	-	16	-	11
North Dakota	23	-	2	-	-	-
Ohio	17	-	5	36	2	-
Oklahoma	9	-	-	14	-	-
Oregon	28	1	-	97	1	-
Pennsylvania	37	-	-	9	-	-
Rhode Island	31	-	-	20	-	-
South Carolina	21	7	-	-	-	-
South Dakota	13	13	1	1	1	-
Tennessee	57	-	-	60	-	-
Texas	101	1	-	53	1	5
Utah	22	-	-	15	-	1
Vermont	5	-	-	4	-	-
Virginia	8	10	-	16	21	-
Washington	45	-	-	153	3	35
West Virginia	7	-	-	10	3	-
Wisconsin	49	4	-	-	-	-
Wyoming	15	-	-	-	-	-
Total	2,418	65	409	1,166	146	342
Average	49	4	58	29	10	21

Table 6A: Personnel – Number of Positions
(page 2 of 9)

STATE	Field Positions			Other Staff		
	Full-Time	Part-Time	Seasonal	Full-Time	Part-Time	Seasonal
Alabama	52	-	-	199	-	248
Alaska	42	-	66	13	-	7
Arizona	137	-	27	11	-	-
Arkansas	193	8	8	594	542	598
California	426	23	2,567	-	-	-
Colorado	174	4	510	26	1	60
Connecticut	72	-	375	-	-	4
Delaware	117	113	477	17	-	-
Florida	830	399	127	125	28	-
Georgia	250	477	11	14	6	-
Hawaii	74	-	-	5	-	-
Idaho	77	4	298	18	5	69
Illinois	368	-	311	42	-	-
Indiana	353	20	34	-	-	1,160
Iowa	102	-	333	-	-	-
Kansas	116	112	170	-	-	-
<i>Kentucky</i>	<i>592</i>	<i>3</i>	<i>378</i>	<i>92</i>	<i>-</i>	<i>3</i>
Louisiana	37	-	-	242	82	102
Maine	20	-	229	3	-	-
Maryland	220	-	556	-	-	-
Massachusetts	376	-	1,433	30	-	-
Michigan	232	42	183	-	23	1,076
Minnesota	172	218	449	53	18	21
Mississippi	110	19	67	10	-	-
Missouri	388	2	125	42	1	-
Montana	50	31	115	-	-	-
Nebraska	45	-	16	96	-	747
Nevada	60	-	132	42	-	12
New Hampshire	67	3	969	-	-	-
New Jersey	-	-	834	-	-	4
New Mexico	160	-	45	-	-	-
New York	40	-	-	1,524	-	4,771
North Carolina	345	-	705	56	-	52
North Dakota	38	1	147	-	15	-
Ohio	407	121	568	-	-	-
Oklahoma	308	240	-	-	-	-
Oregon	271	9	86	-	-	-
Pennsylvania	103	-	6	435	-	-
Rhode Island	-	-	348	-	-	-
South Carolina	129	68	-	121	307	-
South Dakota	132	4	575	-	-	-
Tennessee	611	258	-	268	162	60
Texas	1,021	88	45	88	1	-
Utah	160	-	530	12	2	2
Vermont	38	-	257	-	-	2
Virginia	221	309	208	38	121	103
Washington	322	7	438	34	1	2
West Virginia	72	-	-	351	746	266
Wisconsin	103	-	361	-	-	-
Wyoming	76	7	188	-	-	-
Total	10,309	2,590	15,307	4,601	2,061	9,369
Average	215	96	364	153	121	426

Table 6A: Personnel – Number of Positions
(page 3 of 9)

Total Personnel Positions						
STATE	Full-Time	Part-Time	Seasonal	Grand Total	No. Wearing Uniforms	No. of Divisions
Alabama	264	249	315	828	815	5
Alaska	89	-	75	164	70	6
Arizona	212	-	29	241	166	3
Arkansas	677	528	432	1,637	200	5
California	1,986	-	1,971	3,957	-	18
Colorado	265	5	619	889	-	4
Connecticut	83	-	379	462	23	2
Delaware	165	159	537	861	98	3
Florida	1,034	465	127	1,626	949	5
Georgia	299	508	14	821	758	4
Hawaii	134	-	-	134	6	4
Idaho	153	6	297	456	364	2
Illinois	421	-	311	732	672	6
Indiana	375	21	1,198	1,594	348	2
Iowa	109	-	333	442	87	5
Kansas	116	112	170	398	55	4
<i>Kentucky</i>	<i>684</i>	<i>3</i>	<i>361</i>	<i>1,048</i>	<i>-</i>	<i>-</i>
Louisiana	309	88	102	499	463	3
Maine	36	-	230	266	240	3
Maryland	246	-	556	802	213	4
Massachusetts	320	13	1,695	2,028	2,000	3
Michigan	337	65	1,259	1,661	-	-
Minnesota	314	246	470	1,030	140	4
Mississippi	130	20	67	217	207	4
Missouri	530	3	128	661	483	3
Montana	65	32	115	212	-	-
Nebraska	151	-	766	917	125	7
Nevada	130	-	145	275	227	3
New Hampshire	88	4	969	1,061	1,061	5
New Jersey	-	-	838	838	-	-
New Mexico	189	-	46	235	165	5
New York	1,763	-	4,835	6,598	4,800	11
North Carolina	452	-	768	1,220	820	4
North Dakota	61	1	162	224	201	4
Ohio	504	125	624	1,253	179	6
Oklahoma	330	240	-	570	602	1
Oregon	396	11	86	493	366	3
Pennsylvania	591	-	914	1,505	515	4
Rhode Island	51	-	348	399	390	-
South Carolina	271	382	-	653	625	4
South Dakota	146	18	576	740	-	-
Tennessee	1,280	196	-	1,476	273	6
Texas	1,263	91	50	1,404	1,153	6
Utah	209	2	533	744	691	1
Vermont	47	-	259	306	295	4
Virginia	283	420	311	1,014	252	6
Washington	554	11	475	1,040	642	3
West Virginia	440	749	266	1,455	1,350	3
Wisconsin	152	-	361	513	464	-
Wyoming	91	7	190	288	250	4
Total	18,795	4,780	25,312	48,887	23,803	192
Average	384	154	550	978	554	4

**Table 6A: Personnel – Number of Positions
(page 4 of 9)**

STATE	Administrative Support			Rangers		
	Full-Time	Part-Time	Seasonal	Full-Time	Part-Time	Seasonal
Alabama	32	-	-	15	-	-
Alaska	13	-	3	20	-	5
Arizona	3	-	-	139	-	27
Arkansas	85	10	10	23	5	-
California	802	67	14	485	5	-
Colorado	26	1	60	121	-	244
Connecticut	2	-	4	23	-	-
Delaware	35	36	160	21	16	54
Florida	98	28	-	593	399	127
Georgia	43	20	-	94	40	5
Hawaii	19	-	-	6	-	-
Idaho	8	4	75	45	3	56
Illinois	41	-	-	16	-	-
Indiana	51	17	1,198	95	-	-
Iowa	5	-	-	71	-	-
Kansas	26	-	20	59	-	25
<i>Kentucky</i>	-	-	-	-	-	-
Louisiana	100	35	45	21	-	-
Maine	4	-	57	9	-	89
Maryland	23	-	8	108	-	75
Massachusetts	43	2	58	62	-	57
Michigan	27	34	1	131	7	176
Minnesota	40	18	20	93	9	1
Mississippi	42	-	-	4	-	4
Missouri	23	2	2	43	-	1
Montana	-	4	-	34	10	22
Nebraska	38	-	14	72	-	16
Nevada	17	-	2	49	-	123
New Hampshire	8	4	17	26	-	101
New Jersey	-	-	115	-	-	195
New Mexico	35	-	3	79	-	-
New York	160	-	58	252	-	100
North Carolina	60	-	47	229	-	7
North Dakota	4	-	5	9	-	1
Ohio	40	10	7	113	-	-
Oklahoma	46	28	-	43	11	-
Oregon	69	9	-	190	-	22
Pennsylvania	81	-	83	62	-	95
Rhode Island	-	-	-	-	-	-
South Carolina	39	167	-	125	68	-
South Dakota	-	-	-	-	-	-
Tennessee	228	61	-	221	13	-
Texas	260	57	25	137	-	-
Utah	15	-	3	-	-	-
Vermont	3	-	-	2	-	104
Virginia	-	-	-	-	-	-
Washington	31	5	1	168	-	27
West Virginia	77	28	109	2	-	-
Wisconsin	16	3	106	55	-	-
Wyoming	13	2	2	4	-	25
Total	2,831	652	2,332	4,169	586	1,784
Average	65	26	73	95	49	64

Table 6A: Personnel – Number of Positions
(page 5 of 9)

STATE	Maintenance Workers			Interpreter/Naturalist		
	Full-Time	Part-Time	Seasonal	Full-Time	Part-Time	Seasonal
Alabama	27	73	75	6	-	-
Alaska	8	-	1	-	-	41
Arizona	13	-	-	-	-	-
Arkansas	183	150	144	45	16	10
California	545	6	786	213	2	85
Colorado	60	-	236	-	-	30
Connecticut	45	-	362	1	-	10
Delaware	49	27	78	12	37	84
Florida	27	-	-	237	-	-
Georgia	59	189	2	28	13	-
Hawaii	68	-	-	2	-	-
Idaho	5	3	168	1	3	41
Illinois	219	-	-	26	-	-
Indiana	208	1	-	21	3	-
Iowa	24	-	333	2	-	-
Kansas	14	-	123	2	-	10
<i>Kentucky</i>	-	-	-	<i>22</i>	-	-
Louisiana	136	45	57	22	2	-
Maine	8	-	-	1	-	-
Maryland	27	-	176	-	-	25
Massachusetts	170	-	413	-	-	-
Michigan	5	-	5	-	-	-
Minnesota	37	69	188	22	12	14
Mississippi	27	6	9	-	-	-
Missouri	178	-	107	46	1	15
Montana	18	14	70	-	-	-
Nebraska	38	-	720	3	-	16
Nevada	29	-	11	8	-	-
New Hampshire	37	-	811	-	-	57
New Jersey	-	-	278	-	-	73
New Mexico	70	-	46	5	-	-
New York	748	-	3,276	55	-	-
North Carolina	148	-	498	10	-	17
North Dakota	9	-	1	2	3	14
Ohio	99	54	347	8	10	29
Oklahoma	105	87	-	8	7	-
Oregon	-	-	64	12	-	-
Pennsylvania	261	-	332	42	-	65
Rhode Island	-	-	-	-	-	-
South Carolina	88	112	-	19	35	-
South Dakota	-	-	-	-	-	-
Tennessee	417	295	60	5	59	-
Texas	393	28	20	72	1	1
Utah	47	1	250	4	-	4
Vermont	20	-	225	-	-	16
Virginia	-	-	-	-	-	-
Washington	141	3	398	16	-	14
West Virginia	187	691	146	8	-	-
Wisconsin	4	-	110	3	-	19
Wyoming	35	5	137	4	-	-
Total	5,036	1,859	11,063	993	204	690
Average	114	93	291	28	14	30

Table 6B: Personnel – Salaries
(page 6 of 9)

STATE	Per Annum Salary Range					
	Field Unit Employees		Field Unit Manager		Field Supervisor	
	Min	Max	Min	Max	Min	Max
Alabama	18,734	28,641	28,642	61,303	46,867	82,697
Alaska	33,828	92,592	89,328	139,524	89,328	139,524
Arizona	25,508	55,763	46,932	71,564	65,161	77,469
Arkansas	22,000	421,117	35,155	81,257	62,531	90,670
California	28,142	119,771	112,532	140,388	44,828	133,149
Colorado	41,400	75,240	59,400	131,508	91,704	148,620
Connecticut	39,915	67,941	65,140	112,609	90,002	120,982
Delaware	26,309	39,463	45,202	67,804	51,755	77,633
Florida	19,200	54,147	29,344	93,333	45,173	114,074
Georgia	20,904	57,699	32,418	63,496	53,337	103,484
Hawaii	37,467	46,476	54,725	56,916	62,400	96,084
Idaho	38,637	64,422	48,862	81,445	66,140	110,239
Illinois	44,040	54,744	47,760	109,188	51,540	152,808
Indiana	21,216	49,348	40,456	90,714	41,574	137,514
Iowa	36,379	80,059	46,758	71,011	68,432	105,227
Kansas	52,217	54,860	57,574	60,489	63,563	66,781
<i>Kentucky</i>	<i>14,951</i>	<i>41,872</i>	<i>37,009</i>	<i>71,777</i>	<i>22,523</i>	<i>44,973</i>
Louisiana	18,720	74,568	34,590	95,493	55,557	109,325
Maine	25,272	37,440	31,346	60,819	53,477	77,938
Maryland	32,498	70,201	60,514	97,159	53,214	91,075
Massachusetts	35,156	45,600	47,096	64,137	66,023	80,000
Michigan	10,400	45,885	48,048	75,504	60,902	90,813
Minnesota	28,202	36,882	92,471	99,526	99,526	110,483
Mississippi	15,888	20,943	20,943	56,912	45,155	61,071
Missouri	13,926	50,025	46,171	63,095	62,575	72,821
Montana	51,594	51,594	76,236	51,594	76,236	89,178
Nebraska	18,720	31,905	39,193	80,906	60,880	86,973
Nevada	38,314	79,719	49,151	87,320	61,011	100,161
New Hampshire	32,240	44,075	36,127	54,080	44,075	61,818
New Jersey	29,054	73,926	62,645	117,772	71,878	100,638
New Mexico	26,229	50,045	58,136	69,034	58,136	88,525
New York	27,684	44,311	56,745	91,658	107,800	136,042
North Carolina	31,200	62,092	39,611	86,431	51,895	93,346
North Dakota	32,736	64,326	63,048	93,624	97,872	97,872
Ohio	35,110	43,140	66,061	94,307	72,571	130,667
Oklahoma	28,460	44,004	38,780	60,000	29,298	44,607
Oregon	38,364	57,948	65,976	102,132	107,136	112,488
Pennsylvania	31,394	68,695	87,590	116,597	76,695	148,558
Rhode Island	40,144	42	44,047	49,274	56,891	82,899
South Carolina	18,593	50,930	29,775	75,413	59,882	91,755
South Dakota	25,348	67,651	39,025	67,651	43,347	75,168
Tennessee	24,792	50,628	54,120	105,264	69,588	125,232
Texas	22,394	63,270	54,120	79,875	98,400	98,400
Utah	30,513	63,460	40,081	79,019	58,635	92,996
Vermont	4,324	15,043	11,621	26,749	42,459	92,639
Virginia	35,278	87,831	46,087	111,102	46,087	111,102
Washington	45,288	60,924	71,796	104,892	67,248	90,420
West Virginia	15,080	43,992	35,736	50,400	35,736	57,720
Wisconsin	25,979	62,795	38,875	89,336	59,217	97,676
Wyoming	48,637	75,212	58,078	89,812	69,352	107,245
Total	1,458,378	3,143,257	2,521,076	4,151,213	3,135,612	4,826,882
Average	29,380	62,865	50,422	83,024	62,712	98,192

Table 6B: Personnel – Salaries
(page 7 of 9)

STATE	Operations Chief		Director	
	Min	Max	Min	Max
Alabama	54,242	82,697	76,714	116,882
Alaska	89,328	182,484	102,972	229,944
Arizona	65,161	117,992	103,130	215,250
Arkansas	69,776	101,175	108,110	147,200
California	177,780	177,780	180,086	180,086
Colorado	91,704	148,620	91,704	148,620
Connecticut	101,066	137,814	109,320	149,062
Delaware	67,840	101,760	95,150	142,724
Florida	60,662	151,340	54,229	128,805
Georgia	53,337	103,484	53,560	220,667
Hawaii	93,942	156,293	108,703	180,956
Idaho	79,608	132,690	92,445	147,205
Illinois	51,540	152,808	51,540	152,808
Indiana	41,574	137,514	41,574	137,514
Iowa	84,282	119,954	84,240	128,890
Kansas	70,077	73,625	77,536	81,461
<i>Kentucky</i>	<i>62,145</i>	<i>86,851</i>	<i>116,802</i>	<i>116,802</i>
Louisiana	59,446	116,979	63,606	140,358
Maine	73,133	99,840	76,523	122,512
Maryland	81,345	151,677	78,503	126,047
Massachusetts	105,560	105,560	129,000	129,000
Michigan	80,063	115,163	106,356	141,555
Minnesota	88,385	126,533	98,178	140,689
Mississippi	45,155	79,021	63,408	110,965
Missouri	93,627	93,627	114,433	114,433
Montana	89,178	89,179	95,412	95,412
Nebraska	84,507	120,726	70,354	100,499
Nevada	76,170	115,090	120,977	120,977
New Hampshire	54,350	96,824	77,609	108,149
New Jersey	123,210	123,210	116,309	141,594
New Mexico	58,136	101,150	53,557	132,557
New York	146,082	180,922	127,000	127,000
North Carolina	56,046	100,814	72,172	137,456
North Dakota	105,000	105,000	152,256	152,256
Ohio	72,715	120,640	73,715	195,728
Oklahoma	-	-	72,000	91,000
Oregon	143,364	143,364	168,432	168,432
Pennsylvania	76,695	133,086	114,015	155,248
Rhode Island	74,400	84,340	100,541	115,909
South Carolina	59,882	91,755	65,273	111,646
South Dakota	67,192	112,898	90,870	144,865
Tennessee	76,692	138,060	118,992	214,176
Texas	122,385	122,385	136,325	136,325
Utah	66,997	106,246	85,737	128,731
Vermont	75,908	75,908	105,504	105,504
Virginia	60,209	141,502	78,659	181,224
Washington	96,912	137,856	149,989	182,556
West Virginia	35,736	66,120	43,800	81,036
Wisconsin	59,217	97,676	65,416	109,512
Wyoming	-	-	95,000	145,000
Total	3,821,761	5,658,032	4,727,736	7,033,227
Average	79,620	117,876	94,555	140,665

Table 6B: Personnel – Salaries
(page 8 of 9)

STATE	Per Annum Salary Range					
	Rangers		Maintenance Workers		Interpreters/Naturalists	
	Min	Max	Min	Max	Min	Max
Alabama	29,215	59,556	17,498	61,303	27,804	42,290
Alaska	51,996	130,296	43,212	95,920	3,150	6,300
Arizona	24,960	55,763	25,508	77,469	24,960	24,960
Arkansas	32,495	52,425	22,000	65,265	32,405	52,425
California	43,780	77,725	40,335	55,349	47,424	83,990
Colorado	41,400	86,952	33,528	84,408	41,400	75,240
Connecticut	65,140	112,609	39,915	67,940	54,794	118,897
Delaware	41,615	53,780	22,981	45,185	34,484	51,276
Florida	23,645	43,774	19,966	54,147	19,200	85,000
Georgia	29,399	63,469	20,696	34,803	27,793	63,469
Hawaii	37,467	38,984	40,980	47,406	30,240	47,406
Idaho	40,206	64,422	34,273	721,288	61,033	101,719
Illinois	44,112	62,964	40,908	70,115	47,760	81,840
Indiana	19,812	35,724	21,216	38,038	30,082	51,168
Iowa	53,269	80,059	36,379	61,402	46,758	71,011
Kansas	45,032	49,650	35,306	40,901	40,922	42,994
<i>Kentucky</i>	<i>30,225</i>	<i>47,158</i>	<i>14,951</i>	<i>50,341</i>	<i>29,129</i>	<i>45,106</i>
Louisiana	28,267	61,443	18,720	91,354	32,323	72,862
Maine	25,293	45,365	33,883	45,365	46,987	63,357
Maryland	38,988	70,201	32,498	70,201	38,988	70,201
Massachusetts	38,283	64,137	31,995	41,651	31,542	39,887
Michigan	36,920	58,011	34,902	63,232	44,699	68,557
Minnesota	51,206	75,319	34,101	47,464	41,692	60,518
Mississippi	21,791	34,898	14,450	47,842	-	-
Missouri	42,349	53,288	29,675	40,891	20,466	49,123
Montana	39,754	39,754	36,970	50,449	3,974	39,754
Nebraska	39,193	80,906	22,863	47,782	55,721	80,698
Nevada	38,314	79,719	31,403	83,394	49,151	72,871
New Hampshire	28,829	38,979	25,293	33,426	26,770	38,979
New Jersey	40,220	130,163	37,453	76,000	59,494	107,223
New Mexico	26,229	50,045	21,195	40,194	28,766	55,307
New York	34,638	61,332	27,684	52,039	32,610	92,693
North Carolina	33,960	62,092	31,200	86,431	36,677	72,424
North Dakota	48,000	62,400	529,080	64,256	58,908	58,908
Ohio	51,813	66,082	33,578	44,720	36,754	48,443
Oklahoma	30,160	43,781	23,356	62,400	26,380	35,373
Oregon	38,364	72,780	30,732	40,008	60,672	93,156
Pennsylvania	39,329	78,198	31,394	68,695	31,394	93,555
Rhode Island	-	-	-	-	-	-
South Carolina	24,471	50,930	20,109	61,975	25,451	61,975
South Dakota	39,025	67,651	31,090	50,738	35,767	62,014
Tennessee	36,636	74,796	36,636	74,796	20,412	45,924
Texas	51,000	99,000	26,088	55,350	36,900	41,205
Utah	32,300	51,189	31,283	68,036	32,300	51,189
Vermont	14,247	30,904	8,496	64,535	5,546	13,653
Virginia	27,004	70,017	27,004	70,017	27,004	70,017
Washington	40,152	72,432	59,436	68,892	30,432	55,200
West Virginia	19,392	35,892	15,080	25,536	19,382	39,892
Wisconsin	36,254	62,795	29,660	62,150	38,875	64,105
Wyoming	48,637	75,212	21,900	75,212	44,510	68,830
Total	1,794,786	3,135,021	1,928,859	3,546,310	1,679,885	2,932,984
Average	36,628	63,980	39,364	72,374	34,998	61,104

**Table 6C: Personnel – Employee Benefits
(page 9 of 9)**

STATE	Insurance								Housing			
	Life	Health	Dental	Eye Care	Sick Leave	Vacation Leave	Paid Holidays	Retirement	Housing Allowance	Utilities	Uniform	
Alabama	No	Yes	Yes	Yes	Yes	Yes	Yes	Yes	Yes	No	Yes	Yes
Alaska	Yes	Yes	Yes	Yes	Yes	Yes	Yes	Yes	Yes	Yes	Yes	Yes
Arizona	Yes	Yes	Yes	Yes	Yes	Yes	Yes	Yes	Yes	No	Yes	Yes
Arkansas	Yes	Yes	Yes	Yes	Yes	Yes	Yes	Yes	Yes	No	Yes	Yes
California	Yes	Yes	Yes	Yes	Yes	Yes	Yes	Yes	Yes	Yes	Yes	Yes
Colorado	Yes	Yes	Yes	Yes	Yes	Yes	Yes	Yes	Yes	Yes	Yes	Yes
Connecticut	Yes	Yes	Yes	Yes	Yes	Yes	Yes	Yes	No	No	No	Yes
Delaware	Yes	Yes	Yes	Yes	Yes	Yes	Yes	Yes	Yes	Yes	No	Yes
Florida	Yes	Yes	No	No	Yes	Yes	Yes	Yes	Yes	No	No	Yes
Georgia	Yes	Yes	Yes	Yes	Yes	Yes	Yes	Yes	Yes	No	No	Yes
Hawaii	Yes	Yes	Yes	Yes	Yes	Yes	Yes	Yes	No	No	No	Yes
Idaho	Yes	Yes	Yes	Yes	Yes	Yes	Yes	Yes	Yes	No	No	Yes
Illinois	Yes	Yes	Yes	Yes	Yes	Yes	Yes	Yes	Yes	No	Yes	Yes
Indiana	Yes	Yes	Yes	Yes	Yes	Yes	Yes	Yes	Yes	No	Yes	Yes
Iowa	Yes	Yes	Yes	Yes	Yes	Yes	Yes	Yes	Yes	No	No	Yes
Kansas	Yes	Yes	Yes	Yes	Yes	Yes	Yes	Yes	No	No	No	Yes
<i>Kentucky</i>	<i>Yes</i>	<i>Yes</i>	<i>No</i>	<i>No</i>	<i>Yes</i>	<i>Yes</i>	<i>Yes</i>	<i>Yes</i>	<i>Yes</i>	<i>No</i>	<i>No</i>	<i>Yes</i>
Louisiana	Yes	Yes	Yes	Yes	Yes	Yes	Yes	Yes	Yes	Yes	Yes	Yes
Maine	Yes	Yes	Yes	Yes	Yes	Yes	Yes	Yes	Yes	No	No	Yes
Maryland	Yes	Yes	Yes	Yes	Yes	Yes	Yes	Yes	No	No	No	Yes
Massachusetts	Yes	Yes	Yes	Yes	Yes	Yes	Yes	Yes	No	No	No	Yes
Michigan	Yes	Yes	Yes	Yes	Yes	Yes	Yes	Yes	No	No	No	Yes
Minnesota	Yes	Yes	Yes	Yes	Yes	Yes	Yes	Yes	Yes	No	No	Yes
Mississippi	Yes	Yes	Yes	Yes	Yes	Yes	Yes	Yes	Yes	No	Yes	Yes
Missouri	Yes	Yes	Yes	Yes	Yes	Yes	Yes	Yes	Yes	No	Yes	Yes
Montana	Yes	Yes	Yes	Yes	Yes	Yes	Yes	Yes	No	No	No	Yes
Nebraska	Yes	Yes	Yes	Yes	Yes	Yes	Yes	Yes	Yes	No	Yes	Yes
Nevada	Yes	Yes	Yes	Yes	Yes	Yes	Yes	Yes	Yes	No	No	Yes
New Hampshire	Yes	Yes	Yes	Yes	Yes	Yes	Yes	Yes	Yes	Yes	Yes	Yes
New Jersey	Yes	Yes	Yes	Yes	Yes	Yes	Yes	Yes	Yes	No	No	Yes
New Mexico	Yes	Yes	Yes	Yes	Yes	Yes	Yes	Yes	Yes	No	No	Yes
New York	Yes	Yes	Yes	Yes	Yes	Yes	Yes	Yes	Yes	No	No	Yes
North Carolina	Yes	Yes	Yes	Yes	Yes	Yes	Yes	Yes	Yes	No	No	Yes
North Dakota	-	Yes	No	No	Yes	Yes	Yes	Yes	Yes	No	No	Yes
Ohio	Yes	Yes	Yes	Yes	Yes	Yes	Yes	Yes	No	No	No	Yes
Oklahoma	Yes	Yes	Yes	Yes	Yes	Yes	Yes	Yes	Yes	No	Yes	Yes
Oregon	Yes	Yes	Yes	Yes	Yes	Yes	Yes	Yes	Yes	Yes	Yes	Yes
Pennsylvania	Yes	Yes	Yes	Yes	Yes	Yes	Yes	Yes	Yes	No	Yes	Yes
Rhode Island	Yes	Yes	Yes	Yes	Yes	Yes	Yes	Yes	No	No	No	Yes
South Carolina	Yes	Yes	Yes	Yes	Yes	Yes	Yes	Yes	Yes	No	Yes	Yes
South Dakota	Yes	Yes	No	No	Yes	Yes	Yes	Yes	Yes	No	No	Yes
Tennessee	Yes	Yes	Yes	Yes	Yes	Yes	Yes	Yes	No	No	No	Yes
Texas	Yes	Yes	Yes	Yes	Yes	Yes	Yes	Yes	Yes	Yes	Yes	Yes
Utah	Yes	Yes	Yes	Yes	Yes	Yes	Yes	Yes	Yes	No	Yes	Yes
Vermont	Yes	Yes	Yes	Yes	Yes	Yes	Yes	Yes	No	No	No	Yes
Virginia	Yes	Yes	Yes	Yes	Yes	Yes	Yes	Yes	Yes	No	Yes	Yes
Washington	Yes	Yes	Yes	Yes	Yes	Yes	Yes	Yes	Yes	Yes	Yes	Yes
West Virginia	Yes	Yes	No	No	Yes	Yes	Yes	Yes	Yes	Yes	Yes	Yes
Wisconsin	Yes	Yes	Yes	Yes	Yes	Yes	Yes	Yes	No	No	No	Yes
Wyoming	Yes	Yes	Yes	Yes	Yes	Yes	Yes	Yes	Yes	No	Yes	Yes
# Yes	48	50	45	45	50	50	50	50	38	10	23	50

STATE

Arkansas The large changes in the staff numbers is due to the absorption of War Memorial Stadium and their large number extra help position that they possess

Hawaii Salary numbers represent a 2% increase

Illinois Park Professionals include HQ Staff; Other Staff (F-H) include fiscal support at HQ

Indiana Indiana will need to add significant changes for 2020/2021 with changes in staffing levels, reclassification of specific positions, addition of a third regional manager, and tiering changes. All minimums/maximums could change when entering 2020/2021 information next year.

Kentucky AIX Project Staff note: No data were provided by the state. FY2018-19 data were used.

Ohio *Personnel for FY20 are being reported at the highest employment level for the Fiscal Year. There were wide variations in employment over the course of FY20.

Rhode Island Hiring has been off to a slow start this season. Full time Park Professionals includes HQ staff, regional and assistant regional park managers and park managers. Field Unit employee is Senior Maintenance Tech. Field Unit Manager is a Park Manager. Field Supervisor is a Regional Park Manager and range will include Assistant Regional and Regional Park Manager. Operations Chief is Superintendent of Parks. Director is Administrator of Bureau of Natural Resources and Parks.

Texas Note: Housing depends on position; utilities provided if in park housing

**Table 7: Supporting Group
(page 1 of 1)**

This table reports the presence and number of support groups and endowment funds for (1) a state park system and (2) individual state parks.

STATE	Support Groups			Endowment Funds		
	System Wide	Individual Park	How Many?	System Wide	Individual Park	How Many?
Alabama	Yes	Yes	18	No	No	-
Alaska	No	Yes	4	No	No	-
Arizona	Yes	Yes	14	No	No	-
Arkansas	No	Yes	13	No	No	-
California	Yes	Yes	8	No	Yes	3
Colorado	Yes	Yes	14	Yes	No	1
Connecticut	Yes	Yes	27	No	No	-
Delaware	No	Yes	16	Yes	Yes	25
Florida	Yes	Yes	83	Yes	Yes	10
Georgia	Yes	Yes	57	No	No	-
Hawaii	No	Yes	39	No	No	-
Idaho	Yes	Yes	3	No	Yes	3
Illinois	No	Yes	31	No	Yes	1
Indiana	Yes	Yes	21	No	No	3
Iowa	Yes	Yes	36	No	No	-
Kansas	Yes	Yes	22	No	No	-
Kentucky	Yes	Yes	20	Yes	No	-
Louisiana	No	Yes	5	Yes	Yes	26
Maine	Yes	Yes	10	No	Yes	4
Maryland	Yes	Yes	32	No	No	-
Massachusetts	Yes	Yes	110	No	No	-
Michigan	Yes	Yes	80	Yes	No	-
Minnesota	Yes	Yes	77	No	No	-
Mississippi	No	Yes	4	No	No	-
Missouri	Yes	Yes	14	No	Yes	4
Montana	Yes	Yes	10	No	No	-
Nebraska	Yes	Yes	7	No	No	-
Nevada	No	Yes	1	Yes	No	-
New Hampshire	Yes	Yes	34	No	No	-
New Jersey	No	Yes	29	No	No	-
New Mexico	No	Yes	22	No	No	-
New York	Yes	Yes	100	No	Yes	4
North Carolina	Yes	Yes	33	No	No	-
North Dakota	No	Yes	16	No	Yes	4
Ohio	Yes	Yes	60	No	No	-
Oklahoma	No	Yes	27	No	No	-
Oregon	Yes	Yes	10	Yes	Yes	5
Pennsylvania	Yes	Yes	48	Yes	Yes	1
Rhode Island	No	Yes	2	No	Yes	1
South Carolina	No	Yes	15	Yes	Yes	1
South Dakota	No	Yes	5	No	No	-
Tennessee	Yes	Yes	48	No	No	-
Texas	Yes	Yes	47	Yes	Yes	5
Utah	Yes	Yes	8	No	No	-
Vermont	Yes	Yes	3	Yes	No	-
Virginia	Yes	Yes	30	No	No	-
Washington	Yes	Yes	25	No	Yes	2
West Virginia	Yes	Yes	12	No	Yes	1
Wisconsin	Yes	Yes	64	Yes	Yes	20
Wyoming	No	Yes	12	No	No	-
Total	34	50	29	13	18	6

STATE	NOTES
Colorado	CPW has one system-wide trust fund: Parks for Future Generations Trust Fund
Rhode Island	Includes Fort Adams Trust (which has an endowed fund) and Rocky Point Foundation.

Definitions

(last updated: July 1, 2013)

Table 1: Inventory

Areas are individual units, or pieces of property, managed as part of the state park system.

The total acreage of a state park system includes water surface area only when the measured water bodies are wholly enclosed within the boundaries of a unit of the state park system.

An operational area is one that is open for regular use by the visiting public, and normally implies an appropriate level of development and staffing. State park inventories are reported in the following defined categories by the individual states:

State parks: Areas containing a number of coordinated programs for the preservation of natural and/or cultural resources and provision of a variety of outdoor recreation activities supported by those resources.

State recreation areas: Areas where a clear emphasis is placed on the provision of opportunities for primarily active recreation activities.

State natural areas: Areas where a clear emphasis is placed on protection, management and interpretation of natural resources or features.

State historical areas: Areas where a clear emphasis is placed on protection, management and interpretation of cultural, historical and/or archaeological resources or features.

State environmental education sites: Areas used exclusively or primarily for conducting educational programs on environmental subjects, natural resources, conservation, etc.

State scientific areas: Areas set aside exclusively or primarily for scientific study, observation and experimentation involving natural objects, processes and interrelationships; any other allowable uses are secondary and incidental.

State forests: Areas that, while under the direct administrative supervision and control of the state parks agency, are identified separately from the state park system and distinguished from state park units by having primarily a forest management and/or timber production role rather than a natural area and/or provision of recreation role.

State fish/wildlife areas: Areas under the administrative supervision and control of the state parks agency that are identified and managed primarily for the propagation and recreational taking of fish and/or game ("fishing and/or hunting areas").

State trails: Linear areas outside any other unit of the state park system that provide primarily for trail-type recreational activities (hiking, cycling, horseback riding, etc.) and normally do not contain any land areas large enough to support non-trail activities.

Other and Miscellaneous areas: *(These were combined for the first time with the 2001 AIX)* - Areas other than the above, that are considered special or significant enough in a particular state to warrant separate identification and treatment and/or areas that are not easily categorized or distinguished, or are not considered significant enough to warrant specification — "everything else". (As updated August, 2000)

Table 2: Facilities

Facilities are artificial structures and improvements provided on state park areas and owned by the state to facilitate appropriate use of the parks by the visiting public. They can be either self-operated or concession- or lease-operated by private business. Facilities may also be included which are owned privately and operated by the state. Facilities which are neither state owned nor state operated should be excluded, regardless of whether access to such facilities crosses park lands or not. The AIX survey collects both the number of geographically separate state park areas offering facilities of a particular type and the total number of such facilities, broken down by year-around and seasonal availability. While these facilities take many forms for many different purposes, only a few have been selected for inclusion in this report. They are described and defined as follows.

Campsites, improved: A defined area (e.g., camping area, campground) with designated sites with access to electricity, running water and modern toilets, either through hook-ups or central facilities, or both. A camping area with multiple loops but one unified access is considered one ‘campsites area’. If a camping area contains both improved and primitive sites, the majority of the type of campsites should determine the area’s category. For example, if an area has 10 primitive sites and 3 improved sites, the area should be categorized as a ‘primitive’ camping area. Regardless the camping area category, the actual number of improved or primitive campsites should be correctly reported.

Campsites, primitive: A defined area (e.g., camping area, campground) with designated sites without access to utilities, other than primitive central restrooms (pit privies, holding tanks, etc.) and primitive water supply (pitcher pumps, etc.). A camping area or campground with multiple loops but one unified access is considered one ‘campsites area’. Refer to the preceding definition for camping areas with both improved and primitive sites.

Cabins/cottages: Individual, self-contained rental lodging units, usually free-standing, but possibly in multiple arrangements, such as duplexes or “townhouses”. These units are not included as part of a larger campground and typically do contain kitchens and indoor bathrooms. *If a state has questions about how their units for this definition please call the NASPD Executive Director for further guidance.*

Lodges: Lodging facilities of varying size, but usually containing many rental units consisting primarily of sleeping rooms only, with either private or central bathrooms.

Lodge rooms: Independent sleeping rooms or suites within a lodge that may be rented by themselves.

Group sleeping facilities: Structures designed to be rented and/or used as sleeping quarters by identifiable groups, usually while conducting group programs in the park—”dormitories”.

Restaurants: Facilities for preparing and serving food for consumption on the premises (“eat in”) by individuals or groups on a pay-as-you-go basis, having a seating capacity of 25 people or more.

Golf courses: Any course containing at least nine regulation or “par 3” holes.

Marinas: Boat liveries containing multiple slips and providing at least some services (fuel, supplies, repairs, dry storage, etc.), as opposed to “docks” only.

Swimming pools: Swimming facilities of various sizes and shapes with an impermeable basin and a chemically treated, recirculating water supply, available for general public use with or without a separate fee. One or more swimming pool(s) in a managed area with a unified access road are considered as a swimming pools ‘area’, while the number of individual year-round and seasonable pools should be reported in separate columns.

Stables: Facilities for quartering horses for recreational use by the general public, either directly through rental of the horses themselves or indirectly through rental of the stalls.

Ski areas and runs: Record the number of ski areas (providing one or more runs). Individual year-round or seasonal “runs” or “trails” designated for independent concurrent use for downhill skiing are recorded separately.

Table 3: Visitation and Use

Day use: A recreational outing by individuals arriving and departing the same day.

Overnight use: A recreational outing involving a stay overnight as an authorized part of the recreational experience—may be indoors (lodges, cabins, etc.) or outdoors (camping).

Fee areas: These are parks and other whole areas where entrance fees are charged and more reliable counts can be made. A “fee” area pertains to a whole area, and not to individual facilities or use areas within a park. Thus, users of campgrounds, swimming pools, etc., where a specific use charge is made would not be reported under “fee” areas unless there was also a general entrance fee for the park in which those facilities were located.

Non-fee areas: Parks and other whole areas where no general entrance fee is charged and attendance must be estimated or determined through other means—even though such parks and other similar areas contain facilities (such as campgrounds and swimming pools) that do require specific use charges.

Overnight visitation is also reported by the type of overnight accommodations used: campsites, cabins/cottages, lodges, group facilities and other.

The extent to which overnight accommodations are used is measured by “rental nights” and reported separately for campsites, cabins/cottages and lodge rooms.

Rental night: A “rental night” is a single night’s use of a single rental unit of a given overnight facility, regardless of the size of the party occupying that rental unit. Thus, a party occupying a campsite for a full week would represent seven “rental nights”.

Table 4: Capital Expenses

Land acquisition is reported in two categories (1) by purchase with cash or equivalent value, (2) by other means (such as donations and transfers from other government programs).

New construction is reported as the total cost of all construction initiated during the year, whether completed during that year or not.

Table 5: Financing

Operating expenditures (Table 5A): Includes only those expenditures for operation and maintenance of the state park system per se; excluded are other related expenditures for such things as grants-in-aid to other entities, debt service on bonds, etc.

Fixed capital expenditures (Table 5B): Includes only those expenditures for land acquisition, park construction, etc. “User fees” are reported by the means of collection: individual visitor, passenger vehicle, bus, vehicle parking, and annual passes. For each type of fee, the rate is stated for both state residents and non-residents, and the number of parks where such a fee is charged is noted.

% State Park Operating Budget (Table 5C): Includes funds from all sources, including general fund and other funds.

Table 6: Personnel

Salary ranges are reported for several general categories of personnel:

Field unit employee: Employee having broad public contact, interpretative, and park maintenance duties—e.g. a park ranger.

Field unit manager: Senior on-site employee; manages park, supervises subordinate personnel—e.g. a park superintendent.

Field supervisor: Oversees operation of a number of units in a given region—e.g. a district manager.

Operations chief: The one position responsible for direct day-to-day operation of the whole park system; normally the one to whom field supervisors report.

State park director: The one position responsible for overall direction of the state parks agency.

Ranger: employee with administrative, operational, management, and/or law enforcement responsibilities as their primary function. Employee may be involved with other activities such as routine maintenance or interpretation as additional duties.

Maintenance worker: employee with maintenance and upkeep being the primary responsibility.

Interpreter or naturalist: employee involved in the education of the public as their primary responsibility. Employee may be assigned other duties.