



National Association of State Park Directors

*Statistical Report of  
State Park Operations: 2020-2021*

*Annual Information Exchange*

*for the Period of July 1, 2020 through June 30, 2021*

*Prepared for the National Association of State Park Directors by*

**AIX-Project Team**

Yu-Fai Leung, Ph.D., Principal Investigator<sup>1</sup>  
Suet-Yi (Joey) Cheung, M.S., Project Assistant<sup>1</sup>  
Jordan Smith, Ph.D., Co-Investigator<sup>2</sup>

<sup>1</sup>Department of Parks, Recreation and Tourism Management  
North Carolina State University  
Raleigh, NC 27695

<sup>2</sup>Institute of Outdoor Recreation and Tourism, and  
Department of Environment and Society  
Utah State University  
Logan, UT 84322

*Published under the direction of  
The National Association of State Park Directors  
PO Box 91567  
Raleigh, NC 27675-1567  
919-218-9222*

**July 2023 (revised version)**  
**Volume 43**

To request copies, contact:  
*AIX Project Team*  
*Department of Parks, Recreation and Tourism Management*  
*NC State University*  
*Box 8004, 4008 Biltmore Hall*  
*Raleigh, NC 27695-8004*  
*919-515-3276*

July 2023 (*revised version*)  
Volume 43

*\$350 commercial - \$30 nonprofit and government agencies*

AIX Project Website: <https://go.ncsu.edu/aix>  
NASPD Website: <https://stateparks.org/>

## Table of Contents

<b>Preface</b> .....	<b>4</b>
<b>Report at a Glance</b> .....	<b>5</b>
<b>Introduction</b> .....	<b>6</b>
<b>Table 1: Inventory</b> .....	<b>7</b>
<b>Table 2: Facilities</b> .....	<b>12</b>
<b>Table 3A: Visitation and Use – Attendance</b> .....	<b>19</b>
<b>Table 3B: Visitation and Use – Overnight Visitation</b> .....	<b>21</b>
<b>Table 3C: Visitation and Use – Overnight Facility Utilization</b> .....	<b>22</b>
<b>Table 3D: Overnight Reservation System</b> .....	<b>26</b>
<b>Table 4: Capital Expenses</b> .....	<b>28</b>
<b>Table 5A: Financing – Operating Expenditures</b> .....	<b>30</b>
<b>Table 5B: Financing – Capital Expenditures</b> .....	<b>32</b>
<b>Table 5C: Financing – Parks’ Share of State Expenditures</b> .....	<b>34</b>
<b>Table 5D: Financing – User Fees</b> .....	<b>35</b>
<b>Table 5E: Financing – Revenue Sources</b> .....	<b>42</b>
<b>Table 5F: Financing – Revenue Sources</b> .....	<b>45</b>
<b>Table 6A: Personnel – Number of Positions</b> .....	<b>49</b>
<b>Table 6B: Personnel – Salaries</b> .....	<b>54</b>
<b>Table 6C: Personnel – Employee Benefits</b> .....	<b>57</b>
<b>Table 7: Supporting Group</b> .....	<b>58</b>
<b>Definitions</b> .....	<b>59</b>

## Preface



### National Association of State Park Directors

P.O. Box 24114 Winston-Salem, NC 27114  
(919) 218-9222 info@stateparks.org

[www.stateparks.org](http://www.stateparks.org)



### PREFACE

#### BOARD OF DIRECTORS

##### President

Lisa Sumption  
OREGON

##### Vice President

Paul McCormack  
SOUTH CAROLINA

##### Secretary-Treasurer

Rodney Franklin  
TEXAS

##### Past President

Grady Spann  
ARKANSAS

Terry Coleman  
INDIANA

David Kelly  
MISSOURI

Robert Mergell  
NEVADA

John Hallas  
PENNSYLVANIA

Melissa Baker  
VIRGINIA

Nick Neylon  
WYOMING

The AIX reports are designed and intended primarily for use by the state park directors and their staff for various purposes, such as identifying program, facility and personnel needs, formulating budgetary requests for state legislatures, and comparing their programs with those of the other states. For such “in-house” use, the reported data essentially speak for themselves and require little explanation or amplification. Over the years, however, state parks data published in the AIX has been increasingly requested, and presumably used, by a growing number of other individuals – in academic institutions, other governmental agencies, and business and industry. Because of these expanding external interests, it is important that the subject data first be adequately understood so they may be properly applied. For that reason, every effort has been made in compiling this report to provide guidance for the user, as well as to ensure accuracy and completeness of the data themselves.

Slight changes have been made in this report each year in format, organization and in the included subject matter. This current version contains the same types of information as in the past, presented in a manner intended to facilitate access and allow ready comparison with similar data for previous years. The State Operating Budget figures are retrieved from the State Expenditure Report published by the National Association of State Budget Officers (<http://www.nasbo.org/publications-data/state-expenditure-report/archives>).

It is recommended that all users of the data in this report, whether veteran park staffers or novices, first carefully review the accompanying definitions, notes and symbols to make sure they have the best possible understanding before making assumptions or drawing conclusions based on this data set. **Differing state statutes, regulations, and policies; variation in properties and assets between states; and dissimilar philosophies of acquisition, development, operations, and finance may impact comparisons.**

Sincerely,

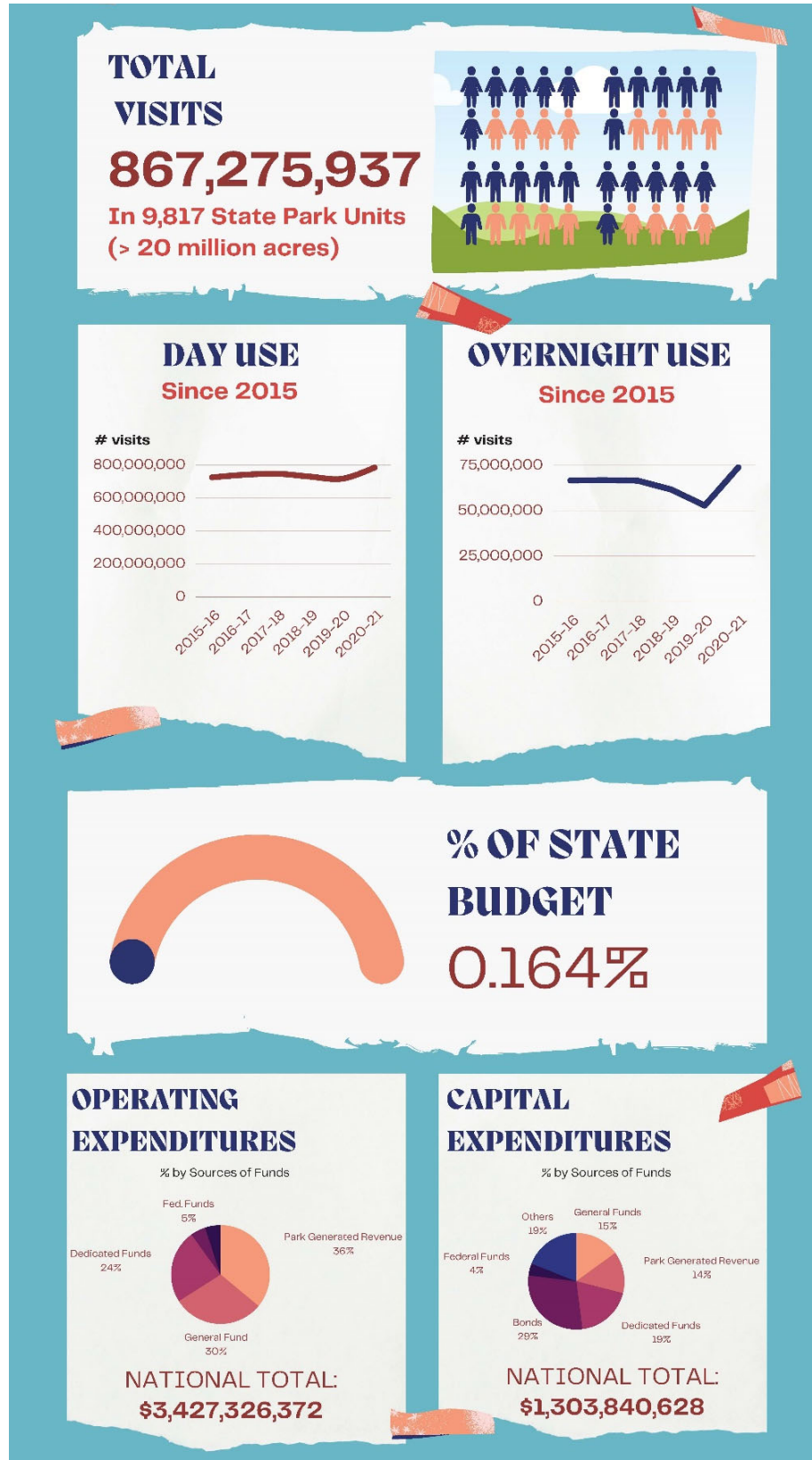
Lewis R. Ledford

**EXECUTIVE DIRECTOR**  
Lewis Ledford  
NORTH CAROLINA (RET.)

*Promoting and advancing the state park systems of America for their own significance, as well as for their important contributions to the nation's environment, heritage, health and economy.*

## Report at a Glance

(A full colored PDF is available on the Past AIX Surveys and Products page at the AIX Project website -- <https://go.ncsu.edu/aix>)



## Introduction

All data in this report are for the period between July 1, 2020 and June 30, 2021, or for the status as of that date, whichever is applicable. Please note that the title of this report has changed since 2009 to clearly reflect the time period covered by the data, not the year in which the report is published.

All data are provided by the state park agencies for their respective states. Where exact data are not collected by certain states, those states are requested to estimate as accurately as possible rather than omit responses altogether. If current year data were not provided by the state, prior year data were used and they are indicated in *red and italicized* form. We deeply appreciate the steadfast support by all state park agencies, as well as the dedicated efforts by state liaisons in collecting and reporting their state's data, especially during the COVID-19 pandemic.

Reasonable efforts were made to ensure the accuracy and completeness of all reported data. For example, data entries were compared with previous year's data to identify unusual changes, and total values were checked for possible calculation errors. Apparent input errors were marked on the draft reports to facilitate review and correction by the states. For these and other possible errors, individual states were contacted to verify the data item(s) in question. We believe this error-checking process has resulted in a more accurate data set. However, users are advised to contact the individual states directly if further verification is desired.

This report contains only tabulated raw data. Analysis and interpretation is the responsibility of the individual user. While all of the fifty state park systems share common attributes, they nevertheless vary considerably from state to state. For this reason, total comparability among the reported data cannot be achieved. Effort has been made, however, to devise common denominators that will allow a useful degree of comparison. Users of these data should become familiar with the definitions and guidelines established for certain categories, as set forth below.

The following sections are organized by tables. Each 'table' covers a specific category of park operations data and corresponds to the respective webpage on the online survey. As each table/webpage has many columns they are broken down into several pages for display in report format. Each section starts with a brief introduction followed by the data tables. At the end of each table there are explanatory notes. Finally, definitions of terms are provided at the end of the report.

**The information contained in this report represents the most current data submitted by the states at the time of publication. Updated data are available from the National Association of State Park Directors and the AIX Project Team.**

**Table 1: Inventory  
(page 1 of 5)**

Inventory pertains to the real property assets of a state park system, i.e. the various areas of land and water managed directly by the state parks agency. Inventory is measured in terms of number of areas and total acreage.

STATE	Parks			Recreation Areas			Natural Areas		
	Number	Number Operating	Acreage	Number	Number Operating	Acreage	Number	Number Operating	Acreage
Alabama	22	17	48,470	-	-	-	-	-	-
Alaska	48	48	2,998,258	80	80	337,874	1	1	49,320
Arizona	18	16	21,916	1	1	686	3	2	29,869
Arkansas	5	5	45	19	19	11,462	13	13	40,538
California	88	88	1,182,293	105	105	356,006	16	16	71,138
Colorado	42	41	230,351	2	2	7,103	106	95	214,760
Connecticut	45	45	23,809	-	-	-	49	49	11,080
Delaware	17	17	23,731	2	2	308	21	9	4,627
Florida	58	58	343,217	34	34	29,279	30	30	402,176
Georgia	50	50	79,761	-	-	-	-	-	-
Hawaii	17	17	29,013	10	10	1,393	13	13	2,252
Idaho	19	19	33,083	-	-	-	4	4	13,723
Illinois	44	44	80,423	22	22	62,371	117	117	52,071
Indiana	24	24	63,317	1	1	700	-	-	-
Iowa	59	59	42,547	12	12	14,445	-	-	-
Kansas	28	28	33,929	-	-	-	-	-	-
Kentucky	47	47	48,000	-	-	-	-	-	-
Louisiana	21	21	29,681	-	-	-	1	1	301
Maine	13	13	28,545	78	62	29,528	17	11	38,820
Maryland	75	75	141,568	-	-	-	-	-	-
Massachusetts	85	79	65,097	4	4	6,600	-	-	-
Michigan	73	73	195,254	22	22	104,263	4	4	409
Minnesota	66	66	258,659	9	9	25,670	-	-	-
Mississippi	24	24	22,920	-	-	-	1	1	700
Missouri	56	56	156,075	-	-	-	37	38	29,340
Montana	54	54	44,235	-	-	-	-	-	-
Nebraska	8	8	32,332	58	58	133,681	-	-	-
Nevada	15	14	79,722	6	6	49,742	-	-	-
New Hampshire	34	34	63,736	19	19	13,582	18	18	6,534
New Jersey	40	40	134,802	3	3	6,353	26	26	-
New Mexico	35	35	189,942	-	-	-	1	1	793
New York	189	189	340,626	87	87	29,088	215	215	2,932,409
North Carolina	35	34	172,977	4	4	13,256	24	3	33,259
North Dakota	13	13	14,224	7	7	3,230	7	7	4,481
Ohio	76	75	173,911	-	-	-	-	-	-
Oklahoma	28	27	64,054	3	3	1,017	1	1	640
Oregon	55	54	66,492	71	66	6,563	34	26	15,949
Pennsylvania	113	113	296,930	-	-	-	3	3	2,276
Rhode Island	28	28	6,055	8	8	-	-	15	1,797
South Carolina	42	41	78,259	-	-	-	-	-	-
South Dakota	13	13	77,133	43	43	14,556	5	5	2,444
Tennessee	40	40	201,690	-	-	-	5	5	44,666
Texas	73	72	525,197	-	-	-	9	6	108,649
Utah	45	45	151,718	1	1	187	-	-	-
Vermont	73	55	54,860	-	-	-	34	34	19,285
Virginia	41	41	75,895	-	-	-	-	-	-
Washington	89	89	86,173	-	-	-	-	-	-
West Virginia	25	25	80,337	-	-	-	2	2	262
Wisconsin	56	50	73,906	9	9	21,546	692	687	80,000
Wyoming	12	12	98,330	1	1	1,009	-	-	-
<b>Total</b>	<b>2,276</b>	<b>2,231</b>	<b>9,363,498</b>	<b>721</b>	<b>700</b>	<b>1,281,498</b>	<b>1,509</b>	<b>1,458</b>	<b>4,214,568</b>

**Table 1: Inventory**  
**(page 2 of 5)**

STATE	Historical Areas			Environmental Education Areas			Scientific Areas		
	Number	Number Operating	Acreage	Number	Number Operating	Acreage	Number	Number Operating	Acreage
Alabama	-	-	-	-	-	-	-	-	-
Alaska	10	10	1,250	-	-	-	-	-	-
Arizona	9	9	4,545	2	2	4,456	-	-	-
Arkansas	15	15	2,950	-	-	-	-	-	-
California	53	53	32,632	-	-	-	-	-	-
Colorado	-	-	-	-	-	-	-	-	-
Connecticut	6	6	635	2	2	80	6	6	665
Delaware	3	3	430	-	-	-	-	-	-
Florida	19	19	5,172	-	-	-	-	-	-
Georgia	16	16	4,710	-	-	-	-	-	-
Hawaii	12	12	591	1	1	100	-	-	-
Idaho	5	5	11,514	-	-	-	-	-	-
Illinois	40	40	1,155	-	-	-	-	-	-
Indiana	2	2	104	-	-	-	-	-	-
Iowa	-	-	-	-	-	-	96	85	10,704
Kansas	-	-	-	-	-	-	-	-	-
Kentucky	-	-	-	-	-	-	-	-	-
Louisiana	17	14	2,497	-	-	-	-	-	-
Maine	25	22	512	-	-	-	-	-	-
Maryland	-	-	-	-	-	-	-	-	-
Massachusetts	62	62	19,065	3	3	2,710	2	2	5,168
Michigan	3	3	1,746	-	-	-	-	-	-
Minnesota	-	-	-	-	-	-	10	10	2,651
Mississippi	-	-	-	-	-	-	-	-	-
Missouri	36	36	3,531	-	-	-	-	-	-
Montana	-	-	-	-	-	-	-	-	-
Nebraska	10	10	2,497	-	-	-	-	-	-
Nevada	6	6	7,155	-	-	-	-	-	-
New Hampshire	17	17	1,136	1	1	334	-	-	-
New Jersey	20	20	65	1	1	874	-	-	-
New Mexico	1	1	1,608	-	-	-	-	-	-
New York	39	39	4,208	4	4	1,813	-	-	-
North Carolina	-	-	-	-	-	-	-	-	-
North Dakota	-	-	-	-	-	-	-	-	-
Ohio	-	-	-	-	-	-	-	-	-
Oklahoma	-	-	-	-	-	-	-	-	-
Oregon	14	14	1,395	-	-	-	-	-	-
Pennsylvania	1	1	480	4	4	4,748	-	-	-
Rhode Island	7	7	155	2	2	-	-	-	-
South Carolina	16	16	3,958	-	-	-	-	-	-
South Dakota	1	1	318	-	-	-	-	-	-
Tennessee	11	11	13,768	-	-	-	-	-	-
Texas	5	5	4,458	-	-	-	-	-	-
Utah	3	3	574	3	3	-	14	14	-
Vermont	-	-	-	1	1	10	-	-	-
Virginia	-	-	-	-	-	-	-	-	-
Washington	27	16	7,750	-	-	-	-	-	-
West Virginia	9	9	2,767	-	-	-	-	-	-
Wisconsin	2	2	2,480	1	1	285	-	-	-
Wyoming	39	24	2,972	-	-	-	-	-	-
Total	561	529	150,783	25	25	15,410	128	117	19,188



**Table 1: Inventory  
(page 3 of 5)**

STATE	Forests			Fish & Wildlife Areas			Other & Misc. Areas		
	Number	Number Operating	Acreage	Number	Number Operating	Acreage	Number	Number Operating	Acreage
Alabama	-	-	-	-	-	-	-	-	-
Alaska	-	-	-	-	-	-	-	-	-
Arizona	-	-	-	-	-	-	1	1	322
Arkansas	-	-	-	-	-	-	2	2	19
California	-	-	-	2	2	-	16	16	10,596
Colorado	-	-	-	364	364	684,361	253	253	338,371
Connecticut	32	32	175,964	-	-	-	2	2	432
Delaware	-	-	-	-	-	-	-	-	-
Florida	-	-	-	3	3	327	20	20	17,969
Georgia	-	-	-	-	-	-	2	2	35
Hawaii	-	-	-	1	1	-	7	7	113
Idaho	-	-	-	-	-	-	4	1	602
Illinois	6	6	20,803	67	67	25,243	86	86	22,621
Indiana	-	-	-	-	-	-	8	8	107,418
Iowa	10	10	44,910	-	-	-	20	20	3,800
Kansas	-	-	-	-	-	-	22	22	131,075
Kentucky	-	-	-	-	-	-	-	-	-
Louisiana	-	-	-	-	-	-	-	-	-
Maine	-	-	-	7	7	2,099	-	-	-
Maryland	-	-	-	-	-	-	-	-	-
Massachusetts	96	96	244,778	1	1	1,158	86	70	9,313
Michigan	-	-	-	-	-	-	140	140	2,117
Minnesota	62	62	-	-	-	-	1,533	1,533	2,306
Mississippi	-	-	-	-	-	-	-	-	-
Missouri	-	-	-	12	12	24,241	1	1	732
Montana	-	-	-	-	-	-	-	-	-
Nebraska	-	-	-	-	-	-	-	-	-
Nevada	-	-	-	-	-	-	-	-	-
New Hampshire	-	-	-	-	-	-	2	2	146,308
New Jersey	11	11	258,500	122	122	357,000	32	32	53,563
New Mexico	-	-	-	-	-	-	-	-	-
New York	452	452	786,040	361	361	207,803	34	34	6,141
North Carolina	-	-	-	-	-	-	11	-	32,446
North Dakota	3	3	13,000	-	-	-	1	1	60
Ohio	-	-	-	-	-	-	-	-	-
Oklahoma	-	-	-	-	-	-	-	-	-
Oregon	-	-	-	-	-	-	80	53	21,086
Pennsylvania	-	-	-	-	-	-	-	-	-
Rhode Island	-	-	-	-	-	-	11	11	155
South Carolina	-	-	-	-	-	-	-	-	-
South Dakota	-	-	-	-	-	-	69	69	7,322
Tennessee	-	-	-	-	-	-	-	-	-
Texas	-	-	-	-	-	-	-	-	-
Utah	-	-	-	-	-	-	3	3	2,233
Vermont	-	-	-	-	-	-	-	-	-
Virginia	-	-	-	-	-	-	6	5	3,169
Washington	-	-	-	-	-	-	89	61	26,334
West Virginia	9	9	68,044	-	-	-	-	-	-
Wisconsin	15	15	775,083	439	439	450,480	2	2	9,129
Wyoming	-	-	-	-	-	-	-	-	-
<b>Total</b>	<b>696</b>	<b>696</b>	<b>2,387,122</b>	<b>1,379</b>	<b>1,379</b>	<b>1,752,712</b>	<b>2,543</b>	<b>2,457</b>	<b>955,787</b>

**Table 1: Inventory**  
**(page 4 of 5)**

STATE	Total Areas			Total Trails		
	Number	Operating	Acreage	Number	Operating	Miles
Alabama	22	17	48,470	121	110	195
Alaska	139	139	3,386,702	102	102	550
Arizona	34	31	61,794	160	160	140
Arkansas	54	54	55,014	211	211	465
California	280	280	1,652,665	-	-	6,440
Colorado	767	755	1,474,946	-	-	662
Connecticut	142	142	212,665	6	6	95
Delaware	43	31	29,096	64	64	174
Florida	164	164	798,140	11	11	2,200
Georgia	68	68	84,506	374	369	715
Hawaii	61	61	33,462	28	-	80
Idaho	32	29	58,922	3	3	108
Illinois	382	382	264,687	7	7	536
Indiana	35	35	171,539	-	-	-
Iowa	197	186	116,406	1	1	6
Kansas	50	50	165,004	85	85	409
Kentucky	47	47	48,000	300	300	330
Louisiana	39	36	32,479	69	66	191
Maine	140	115	99,504	15	15	365
Maryland	75	75	141,568	604	604	1,170
Massachusetts	339	317	353,889	35	35	3,261
Michigan	242	242	303,789	56	56	1,029
Minnesota	1,680	1,680	289,286	30	30	1,506
Mississippi	25	25	23,620	18	18	100
Missouri	142	143	213,919	269	269	1,100
Montana	54	54	44,235	-	-	-
Nebraska	76	76	168,510	2	2	324
Nevada	27	26	136,619	133	129	261
New Hampshire	91	91	231,630	131	131	8,400
New Jersey	238	238	812,680	505	470	1,112
New Mexico	37	37	192,343	61	61	144
New York	1,381	1,381	4,308,127	19	19	1,267
North Carolina	74	41	251,938	11	-	3,346
North Dakota	31	31	34,995	179	179	3,005
Ohio	76	75	173,911	696	591	1,095
Oklahoma	32	31	65,711	47	47	423
Oregon	254	213	111,485	6	6	571
Pennsylvania	121	121	304,434	1,022	1,022	1,532
Rhode Island	56	71	8,162	4	4	400
South Carolina	58	57	82,217	194	194	455
South Dakota	131	131	101,773	1	1	114
Tennessee	56	56	260,124	541	541	1,430
Texas	87	83	638,304	5	5	130
Utah	69	69	154,712	-	-	-
Vermont	108	90	74,155	47	47	258
Virginia	47	46	79,064	539	539	703
Washington	201	171	120,257	5	5	500
West Virginia	45	45	151,410	363	363	1,280
Wisconsin	1,216	1,205	141,290	44	44	2,591
Wyoming	52	37	102,311	-	-	-
Total	9,817	9,580	20,142,089	7,124	6,922	51,168

**Table 1: Inventory  
(page 5 of 5)  
Explanatory Notes**

<b>STATE</b>	<b>NOTES</b>
Arizona	Trails within the boundaries of State Parks are included, including intersecting trails. Lime Kiln and 50 year trail areas that intersect with parks are included. (Removed Spur Cross Ranch from 'Other areas')
Arkansas	Arkansas State Parks has 1 Arboretum, 5 Museum Parks, and 1 Stadium that do not fall into the "other"
California	Table 1.8: The two Fish and Wildlife Areas are Emeryville Crescent State Marine Reserve and Albany State Marine Reserve. They are both located on the San Francisco bay and are separated by the McLaughlin Eastshore State Park (State Seashore). The two state marine reserves are entirely off shore and contain no coastal acreage. California State Parks does not track our number of trails. Only mileage. The data reported includes 5,210.78 non-motorized trails and 1229.59 motorized trails.
Colorado	Colorado does not have state-managed trails outside of the state park and wildlife area systems.
Connecticut	Trails = State Park Linear Multiuse Paths (Rail trails)
Hawaii	Multiple areas were not operating for periods during COVID Emergency Proclamation, but all were operating by the end of the fiscal year covered by the data period.
Indiana	2020/2021 no new acreage purchased this fiscal year. Other/Misc. Properties for Indiana include USACE Reservoirs. Will consider including "natural areas" in future surveys after figuring out how to best represent them here. CSorrels
Massachusetts	The trails included are from major trail systems. This does not include the thousands of miles of trails within our park system.
Mississippi	Corrected miles of Park acreage
Nevada	Ice Age Fossils not operational during the reporting period. Berlin-Ichthyosaur was closed for construction starting May 2021.
New York	Table 1 Inventory contains data from both the New York State Office of Parks, Recreation and Historic Preservation (OPRHP) and the New York State Department of Environmental Conservation (DEC). OPRHP executive direction is to report on all publicly accessible state-owned outdoor recreation lands, regardless of agency jurisdiction. Decrease in number of operating facilities and acreage as well as reallocation to other categories is due to reclassification of several land categories as well as better adherence to AIX definitions. Acreage for some operating facilities was double counted in two or more categories. Trails were overcounted in 2019-2020. This has been rectified in 20-21.
Ohio	In FY21, Ohio purchased land to create a 76th state park. The park is currently under development and not operational. Opening is expected in FY23. Trail mileage is increasing as we are getting more accurate trail mileage calculations using GIS data.
Oklahoma	No longer have Hugo/Snowdale but Quartz Mountain is under state park ownership instead of higher regents
Oregon	State Recreation Areas = SRA/SRS Natural Areas = SNA/SNS Historic Areas = SHS/SHA Other & Miscellaneous includes Scenic Viewpoints, Waysides, Scenic Corridors, etc. Trail info provided by David Quillin GIS Specialist. "Operational" determined through use of the OPRIS asset management system. This is the best available acreage estimate. Miles of Total Trails incorporates newly completed segments of the Oregon Coast Trail.
Pennsylvania	We continue to GPS our trails when time permits. We continue to close private/social trails as well as making improvements to other trails.
Rhode Island	Re-categorized several properties from year prior. Added 2 Nature Centers (LW/ BG). Unable to determine acreage of several properties
South Carolina	Acquired land for a new park that has not opened yet. Added trails at Lake Greenwood, Lake Warren and Little Pee Dee
Tennessee	New acquisitions with focus on continued growth of Justin P. Wilson Cumberland Trail State Park, and a GIS park parcels/boundary review contributed to Tennessee's acreage increase.
Texas	1) Powderhorn was officially added in Oct 21 (Outside of FY21 reporting period, should be added next year 2) Previous year data did not include all trailways, no new trailway were constructed (Caprock, Lake Somerville, Fort Richardson, Lake Mineral Wells, Ray Roberts)
Utah	The trails fall under the Division of Recreation
Vermont	** Trails info provided by Recreational Trails Program Manager Sherry Winnie. No new trails built due to COVID-19. **Information on # of areas, acreage, natural areas/ acreage provided by Niels Rinehart, Lands Administration & Records Coordinator.
Virginia	Trails & Acreage: implementation of statewide GIS has given us more accurate data.
Washington	New parcel acquisitions in Battle Ground Lake, Beacon Rock, Lake Sylvia, Mt. Spokane, and Penrose Point state parks. Reclassified state park lands: Palouse Falls changed from state park to a heritage site and Nisqually state property to Nisqually State Park. Miscellaneous areas: Parcels entirely relinquished at Lake Easton, Camp Calvinwood, Lake Newport, Square Lake, and Grant County Sportsmen. Changes in historical area: adjustment to boundary of Cama Beach, acquisition added to Ft. Columbia.
Wisconsin	We changed how we previously reported our properties, please reach out for any questions.
Wyoming	During COVID our cabins were closed.

**Table 2: Facilities**  
(page 1 of 7)

This report tabulates the number of separate state park areas offering such facilities, as well as the total number of such facilities, broken down by year-around and seasonal availability. States that provided “0” or no data are excluded from averages. To be included the facilities must be owned by the state and either self operated or concession or lease operated by private business. Facilities may also be included which are owned privately and operated by the state. Facilities which are neither state owned nor state operated may not be included, regardless of whether access to such facilities crosses park lands or not.

STATE	Improved Campsites				Primitive Campsites			
	Areas	Number of		Total	Areas	Number of		Total
		Year Round	Seasonal			Year Round	Seasonal	
Alabama	17	2,527	-	2,527	17	512	-	512
Alaska	-	-	-	-	61	-	2,510	2,510
Arizona	16	1,207	-	1,207	11	300	-	300
Arkansas	29	1,467	-	1,467	20	255	-	255
California	87	12,808	1,350	14,158	62	2,665	650	3,315
Colorado	33	-	-	4,094	7	-	-	162
Connecticut	11	-	1,179	1,179	4	-	133	133
Delaware	5	420	419	839	7	21	-	21
Florida	53	3,306	-	3,306	56	520	-	520
Georgia	38	1,907	-	1,907	23	253	-	253
Hawaii	10	85	-	85	2	9	-	9
Idaho	16	869	813	1,682	14	249	549	798
Illinois	56	7,594	-	7,594	83	2,149	-	2,149
Indiana	30	6,582	-	6,582	18	1,159	-	1,159
Iowa	50	14	3,877	3,891	12	571	-	571
Kansas	79	3,199	1,273	4,472	46	3,305	367	3,672
Kentucky	29	564	1,485	2,049	29	142	394	536
Louisiana	20	1,415	-	1,415	10	333	-	333
Maine	9	-	846	846	8	-	489	489
Maryland	22	184	2,151	2,335	3	50	-	50
Massachusetts	21	-	3,221	3,221	6	-	111	111
Michigan	72	1,424	11,887	13,311	166	2,011	2,094	4,105
Minnesota	65	457	3,853	4,310	80	213	570	783
Mississippi	21	1,443	-	1,443	16	340	-	340
Missouri	42	2,912	755	3,667	10	63	-	63
Montana	18	294	82	376	23	385	163	548
Nebraska	41	3,754	-	3,754	62	4,696	-	4,696
Nevada	20	374	-	374	68	2,401	-	2,401
New Hampshire	15	17	1,090	1,107	7	146	119	265
New Jersey	18	444	848	1,292	7	124	77	201
New Mexico	63	2,144	2,192	4,336	51	1,780	2,529	4,309
New York	120	-	14,430	14,430	2,056	2,067	21	2,088
North Carolina	35	1,002	1,715	2,717	23	362	46	408
North Dakota	13	1,145	-	1,145	13	-	252	252
Ohio	55	8,987	180	9,167	3	150	-	150
<b>Oklahoma</b>	<b>32</b>	<b>2,622</b>	<b>1,046</b>	<b>3,668</b>	<b>32</b>	<b>2,346</b>	<b>1,139</b>	<b>3,485</b>
Oregon	41	3,056	1,913	4,969	18	99	222	321
Pennsylvania	50	77	5,833	5,910	12	22	328	350
Rhode Island	-	-	147	147	-	-	891	891
South Carolina	-	1,778	736	2,514	34	353	105	458
South Dakota	46	3,169	836	4,005	22	357	-	357
Tennessee	39	2,954	-	2,954	24	323	-	323
Texas	78	5,545	293	5,838	39	1,222	-	1,222
Utah	61	532	967	1,499	24	199	491	690
Vermont	39	-	2,102	2,102	9	-	99	99
Virginia	23	154	1,544	1,698	12	131	-	131
Washington	74	2,992	2,875	5,867	22	337	151	488
West Virginia	28	166	1,303	1,469	6	14	121	135
Wisconsin	41	161	1,610	1,771	56	787	3,883	4,670
Wyoming	10	257	-	257	10	1,490	-	1,490
Total	1,791	92,008	74,851	170,953	3,404	34,911	18,504	53,577
Average	38	2,191	2,268	3,489	69	831	685	1,072

**Table 2: Facilities**  
**(page 2 of 7)**

STATE	Cabins/Cottages				Group Facilities			
	Areas	Number of Year Round	Seasonal	Total	Areas	Number of Year Round	Seasonal	Total
Alabama	11	209	-	209	2	2	-	2
Alaska	26	85	6	91	-	-	-	-
Arizona	8	55	-	55	8	20	-	20
Arkansas	14	234	-	234	3	3	-	3
California	21	656	38	694	70	209	102	311
Colorado	11	-	-	73	14	-	-	26
Connecticut	8	-	38	38	-	-	-	-
Delaware	5	45	2	47	1	-	2	2
Florida	18	196	-	196	3	3	-	3
Georgia	30	424	-	424	11	35	-	35
Hawaii	4	23	-	23	5	5	-	5
Idaho	19	66	19	85	6	10	7	17
Illinois	20	41	-	41	1	3	-	3
Indiana	8	92	59	151	6	2	4	6
Iowa	21	40	81	121	1	-	1	1
Kansas	21	119	4	123	1	-	1	1
Kentucky	17	323	-	323	16	16	-	16
Louisiana	17	210	-	210	10	11	-	11
Maine	-	-	-	-	-	-	-	-
Maryland	17	49	99	148	20	17	57	74
Massachusetts	11	-	52	52	1	-	1	1
Michigan	50	133	36	169	-	227	-	227
Minnesota	31	93	82	175	8	1	8	9
Mississippi	19	254	-	254	6	6	-	6
Missouri	16	76	136	212	7	1	12	13
Montana	11	3	8	11	8	1	13	14
Nebraska	10	105	138	243	2	2	-	2
Nevada	2	5	-	5	-	-	-	-
New Hampshire	8	9	38	47	-	-	-	-
New Jersey	12	44	83	127	17	37	63	100
New Mexico	1	3	-	3	26	40	-	40
New York	40	248	726	974	4	-	31	31
North Carolina	9	37	21	58	4	14	60	74
North Dakota	10	16	35	51	1	1	-	1
Ohio	17	513	-	513	6	4	2	6
<i>Oklahoma</i>	<i>16</i>	<i>312</i>	<i>-</i>	<i>312</i>	<i>11</i>	<i>-</i>	<i>11</i>	<i>11</i>
Oregon	32	278	14	292	-	-	-	-
Pennsylvania	44	206	207	413	5	-	12	12
Rhode Island	-	-	30	30	-	-	3	3
South Carolina	17	149	7	156	6	4	3	7
South Dakota	39	156	72	228	-	-	-	-
Tennessee	21	352	20	372	13	10	11	21
Texas	48	648	-	648	75	201	-	201
Utah	19	35	23	58	43	35	54	89
Vermont	16	-	61	61	-	-	-	-
Virginia	20	380	56	436	30	8	22	30
Washington	29	148	11	159	10	11	2	13
West Virginia	19	103	230	333	3	-	3	3
Wisconsin	10	-	10	10	4	4	1	5
Wyoming	6	24	-	24	1	-	1	1
Total	879	7,197	2,442	9,712	469	943	487	1,456
Average	18	167	76	198	12	30	19	35

**Table 2: Facilities**  
(page 3 of 7)

STATE	Lodges			Lodge Rooms			
	Areas	Number of Year Round	Seasonal	Total	Number of Year Round	Seasonal	Total
Alabama	5	5	-	5	343	-	343
Alaska	-	-	-	-	-	-	-
Arizona	-	-	-	-	-	-	-
Arkansas	4	4	-	4	214	-	214
California	8	8	-	8	480	-	480
Colorado	-	-	-	-	-	-	-
Connecticut	-	-	-	-	-	-	-
Delaware	-	-	-	-	-	-	-
Florida	1	1	-	1	27	-	27
Georgia	-	-	-	-	-	-	-
Hawaii	-	-	-	-	-	-	-
Idaho	1	1	-	1	-	10	10
Illinois	7	7	-	7	33,124	271	33,395
Indiana	7	7	-	7	593	56	649
Iowa	1	-	1	1	-	105	105
Kansas	-	-	-	-	-	-	-
Kentucky	17	17	-	17	890	-	890
Louisiana	8	15	-	15	16	-	16
Maine	-	-	-	-	-	-	-
Maryland	-	-	-	-	-	-	-
Massachusetts	-	-	-	-	-	-	-
Michigan	1	1	-	1	67	-	67
Minnesota	1	-	1	1	-	14	14
Mississippi	3	3	-	3	45	-	45
Missouri	4	2	2	4	38	110	148
Montana	-	-	-	-	-	-	-
Nebraska	2	1	1	2	40	22	62
Nevada	-	-	-	-	-	-	-
New Hampshire	-	-	-	-	-	-	-
New Jersey	-	-	-	-	-	-	-
New Mexico	-	-	-	-	-	-	-
New York	3	4	3	7	43	145	188
North Carolina	1	4	-	4	47	-	47
North Dakota	-	-	-	-	-	-	-
Ohio	9	9	-	9	793	-	793
Oklahoma	6	6	-	6	218	-	218
Oregon	2	1	1	2	-	-	-
Pennsylvania	2	1	1	2	16	20	36
Rhode Island	-	-	-	-	-	-	-
South Carolina	1	1	-	1	29	48	77
South Dakota	5	3	9	17	38	122	160
Tennessee	6	6	-	6	439	-	439
Texas	1	1	-	1	42	-	42
Utah	-	-	-	-	-	-	-
Vermont	1	-	1	1	-	8	8
Virginia	-	-	-	-	-	-	-
Washington	-	-	-	-	-	-	-
West Virginia	12	11	1	12	763	30	793
Wisconsin	-	-	-	-	-	-	-
Wyoming	-	-	-	-	-	-	-
Total	119	119	21	145	38,305	961	39,266
Average	4	5	2	5	1,741	74	1,510

**Table 2: Facilities  
(page 4 of 7)**

STATE	Restaurants				Golf Facilities/Number of Courses & Holes							
	Areas	Number of Year Round	Seasonal	Total	Areas	Number of Year Round	Seasonal	Total Courses	Year Round Holes	Seasonal Holes	Total Holes	
Alabama	5	5	1	6	3	3	-	3	54	-	54	
Alaska	1	-	1	1	-	-	-	-	-	-	-	
Arizona	-	-	-	-	-	-	-	-	-	-	-	
Arkansas	7	5	2	7	2	2	-	2	45	-	45	
California	14	14	-	14	3	2	1	3	27	18	45	
Colorado	-	-	-	-	-	-	-	-	-	-	-	
Connecticut	-	-	-	-	-	-	-	-	-	-	-	
Delaware	2	1	2	3	2	2	-	2	36	-	36	
Florida	34	34	-	34	-	-	-	-	-	-	-	
Georgia	-	-	-	-	6	6	-	6	108	-	108	
Hawaii	1	1	-	1	-	-	-	-	-	-	-	
Idaho	-	-	-	-	-	-	-	-	-	-	-	
Illinois	24	7	17	24	2	1	1	2	18	18	36	
Indiana	7	7	-	7	1	-	1	1	-	18	18	
Iowa	1	-	1	1	1	-	1	1	-	18	18	
Kansas	3	2	1	3	1	1	-	1	-	-	-	
Kentucky	17	17	-	17	13	13	-	13	225	-	225	
Louisiana	1	1	-	1	1	1	-	1	18	-	18	
Maine	-	-	-	-	-	-	-	-	-	-	-	
Maryland	-	-	-	-	-	-	-	-	-	-	-	
Massachusetts	-	-	-	-	2	-	2	2	-	-	-	
Michigan	1	1	-	1	1	-	1	1	-	5	5	
Minnesota	2	-	2	2	-	-	-	-	-	-	-	
Mississippi	-	-	-	-	3	3	-	3	54	-	54	
Missouri	11	2	9	11	-	-	-	-	-	-	-	
Montana	-	-	-	-	-	-	-	-	-	-	-	
Nebraska	3	1	2	3	-	-	-	-	-	-	-	
Nevada	1	-	1	1	-	-	-	-	-	-	-	
New Hampshire	-	-	-	-	-	-	-	-	-	-	-	
-	19	2	18	20	4	-	-	4	-	-	-	
New Mexico	2	2	2	4	-	-	-	-	-	-	-	
New York	23	10	16	26	19	4	22	26	81	333	414	
North Carolina	2	1	1	2	-	-	-	-	-	-	-	
North Dakota	-	-	-	-	-	-	-	-	-	-	-	
Ohio	11	11	-	11	5	-	5	5	-	90	90	
Oklahoma	-	-	-	-	7	7	-	7	117	-	117	
Oregon	2	1	1	2	-	-	-	-	-	-	-	
Pennsylvania	-	-	-	-	2	-	2	2	-	36	36	
Rhode Island	-	-	-	-	1	-	1	1	-	9	9	
South Carolina	1	1	-	1	2	2	-	2	36	-	36	
South Dakota	6	-	9	9	-	-	-	-	-	-	-	
Tennessee	8	8	1	9	9	9	-	9	162	-	162	
Texas	1	1	-	1	1	1	-	1	-	-	-	
Utah	9	1	8	9	4	1	3	4	9	90	99	
Vermont	-	-	-	-	-	-	-	-	-	-	-	
Virginia	-	-	-	-	-	-	-	-	-	-	-	
Washington	5	6	1	7	2	2	-	2	27	-	27	
West Virginia	12	8	4	12	5	4	1	5	81	108	189	
Wisconsin	2	-	2	2	2	-	2	2	-	27	27	
Wyoming	-	1	2	3	-	-	-	-	-	-	-	
<b>Total</b>	<b>238</b>	<b>151</b>	<b>104</b>	<b>255</b>	<b>104</b>	<b>64</b>	<b>43</b>	<b>111</b>	<b>1,098</b>	<b>770</b>	<b>1,868</b>	
<b>Average</b>	<b>7</b>	<b>6</b>	<b>5</b>	<b>8</b>	<b>4</b>	<b>4</b>	<b>3</b>	<b>4</b>	<b>69</b>	<b>64</b>	<b>81</b>	

**Table 2: Facilities  
(page 5 of 7)**

STATE	Marinas				Swimming Pools			
	Areas	Number of Year Round	Seasonal	Total	Areas	Number of Year Round	Seasonal	Total
Alabama	4	4	-	4	7	-	7	7
Alaska	-	-	-	-	-	-	-	-
Arizona	-	-	-	-	-	-	-	-
Arkansas	9	2	7	9	11	1	10	11
California	7	7	1	8	3	2	1	3
Colorado	10	-	-	11	-	-	-	-
Connecticut	1	-	1	1	1	-	2	2
Delaware	2	2	-	2	1	-	1	1
Florida	9	9	-	9	4	4	-	4
Georgia	3	3	-	3	3	-	3	3
Hawaii	1	1	-	1	-	-	-	-
Idaho	6	3	3	6	-	-	-	-
Illinois	2	1	1	2	2	-	2	2
Indiana	8	4	14	18	11	5	10	15
Iowa	1	-	1	1	1	-	1	1
Kansas	15	8	7	15	-	-	-	-
Kentucky	16	7	9	16	24	2	22	24
Louisiana	1	1	-	1	4	-	4	4
Maine	-	-	-	-	-	-	-	-
Maryland	4	4	4	8	2	-	2	2
Massachusetts	-	-	-	-	37	-	37	37
Michigan	19	-	19	19	-	-	-	-
Minnesota	2	-	2	2	2	-	2	2
Mississippi	2	2	-	2	5	-	5	5
Missouri	7	-	7	7	2	-	2	2
Montana	2	1	1	2	-	-	-	-
Nebraska	1	-	1	1	5	-	5	5
Nevada	-	-	-	-	-	-	-	-
New Hampshire	1	-	1	1	-	-	-	-
New Jersey	6	6	-	6	-	-	-	-
New Mexico	7	4	3	7	-	-	-	-
New York	24	-	24	24	16	1	33	34
North Carolina	5	5	-	5	2	-	2	2
North Dakota	3	-	3	3	-	-	-	-
Ohio	44	-	44	44	12	9	12	21
Oklahoma	15	13	2	15	11	-	-	-
Oregon	2	-	2	2	-	-	-	-
Pennsylvania	11	-	11	11	15	-	15	15
Rhode Island	1	1	-	1	-	-	-	-
South Carolina	2	2	-	2	1	-	1	1
South Dakota	8	-	10	10	-	-	-	-
Tennessee	7	7	-	7	5	-	5	5
Texas	1	1	-	1	6	2	4	6
Utah	5	2	3	5	-	-	-	-
Vermont	1	-	1	1	1	-	1	1
Virginia	3	2	1	3	5	-	5	5
Washington	5	4	1	5	1	-	1	1
West Virginia	3	1	2	3	19	5	14	19
Wisconsin	3	-	3	3	1	-	1	1
Wyoming	3	-	3	3	8	8	6	14
Total	292	107	192	310	228	39	216	255
Average	6	4	6	7	7	4	7	8



**Table 2: Facilities  
(page 6 of 7)**

STATE	Stables				Ski Slopes			
	Areas	Number of Year Round	Seasonal	Total	Areas	Number of Year Round	Seasonal	Total
Alabama	1	1	-	1	1	1	-	1
Alaska	-	-	-	-	1	-	-	1
Arizona	2	2	-	2	-	-	-	-
Arkansas	4	1	3	4	-	-	-	-
California	1	1	-	1	1	-	1	1
Colorado	4	4	-	4	-	-	-	-
Connecticut	-	-	-	-	1	-	26	26
Delaware	2	2	-	2	-	-	-	-
Florida	7	7	-	7	-	-	-	-
Georgia	3	82	-	82	-	-	-	-
Hawaii	-	-	-	-	-	-	-	-
Idaho	-	-	-	-	-	-	-	-
Illinois	4	-	4	4	1	-	1	1
Indiana	6	-	6	6	-	-	-	-
Iowa	-	-	-	-	-	-	-	-
Kansas	-	-	-	-	-	-	-	-
Kentucky	2	-	2	2	-	-	-	-
Louisiana	-	-	-	-	-	-	-	-
Maine	-	-	-	-	-	-	-	-
Maryland	-	-	-	-	-	-	-	-
Massachusetts	1	-	1	1	-	-	-	-
Michigan	3	3	-	3	1	-	1	1
Minnesota	-	-	-	-	-	-	-	-
Mississippi	1	1	-	1	-	-	-	-
Missouri	-	-	-	-	-	-	-	-
Montana	-	-	-	-	-	-	-	-
Nebraska	12	-	12	12	-	-	-	-
Nevada	-	-	-	-	-	-	-	-
New Hampshire	-	-	-	-	3	-	3	3
New Jersey	-	-	-	-	-	-	-	-
New Mexico	1	5	-	5	-	-	-	-
New York	2	-	2	2	-	-	-	-
North Carolina	1	33	-	33	-	-	-	-
North Dakota	4	-	4	4	-	-	-	-
Ohio	-	-	-	-	-	-	-	-
Oklahoma	5	2	3	5	-	-	-	-
Oregon	-	-	-	-	-	-	-	-
Pennsylvania	2	2	-	2	3	-	3	3
Rhode Island	2	2	-	2	-	-	-	-
South Carolina	3	283	-	283	-	-	-	-
South Dakota	1	-	1	1	-	-	-	-
Tennessee	3	-	3	3	-	-	-	-
Texas	-	-	-	-	-	-	-	-
Utah	-	-	-	-	-	-	-	-
Vermont	-	-	-	-	-	-	-	-
Virginia	-	-	-	-	-	-	-	-
Washington	2	2	-	2	1	-	1	1
West Virginia	1	1	3	4	1	-	39	39
Wisconsin	-	-	-	-	1	-	55	55
Wyoming	-	-	-	-	-	-	-	-
Total	80	434	44	478	15	0	132	132
Average	3	24	4	18	1	0	12	12

**Table 2: Facilities  
(page 7 of 7)**

**Explanatory Notes**

<b>STATE</b>	<b>NOTES</b>
Arizona	All campsites are available year round.
Arkansas	Rental RVs and Yurts wer added to Campsite numbers, hike in and bike campsites were added to Primitive Campsites, camper cabins were added to Cabins, boat house added to marinas and an equestrian barn was added to the stables.
Idaho	Yurts are included in the cabins/cottages count. Primitive= Basic site with no water or power.
Illinois	Illinois does not currently track seasonal vs nonseasonal campsites.
Indiana	2020/21 Mounds and Harmonie pools closed indefinitely.
Iowa	Campsite availability in winter is dependent upon the weather. One of the group camps did not operate in FY21. Swimming pool is the waterpark at the resort. Marina is the marina at Big Creek State Park.
Nevada	Dispersed campground site availability fluctuates. Due to the COVID-19 pandemic's increase in visitation, more people were able to fit in dispersed campground sites.
New Hampshire	Added back Umbagog marina. Added back Cannon Mtn, Mt Sunapee & Mt Prospect ski areas.
New Jersey	Golf courses are state owned, but privately managed. We have 6 marinas, 3 managed by Parks and the other 3 are leased.
New York	Decrease in number of operating facilities is due to reclassification of several land categories as well as better adherence to AIX definitions. OPRHP executive direction is to report on all publicly accessible state-owned lands regardless of agency jurisdiction. Decrease in cabins is due to the previous inclusion of staff housing. Those quantities have been removed.
Oregon	Improved = full, electric, and tent (info OPRD Reservation Help Desk) Primitive = walk-in, primitive, and horse (info from Help Desk) Cabins/cottages = cabins, yurts, and tepees (info from Help Desk) Lodges = Wolf Creek (year round) and Frenchglen (closed in winter) Restaurants = Wolf Creek and Frenchglen (closed in winter) Marinas = Cove Palisades and Wallowa
Pennsylvania	Colonel Denning State Park reopened as a modern facility after rehab.
Rhode Island	SITES RECALCULATED ERROR FROM 2019-2020 ( Primitive BGAME 692, EB 15, CB 75, Fishermans 35, GW 74) ( Improved Fishermans Only 147) (Group Camping Shelters GW 2, Bgame 1) ( Cabins Bgame 26, GW 4)
South Carolina	Upgraded sites at Colleton and Givhasn Ferry to full service. Considered anything with just one utility or less primitive. A cabin at Santee and Oconee were not reservable. The cabin at Saint Phillips Island is operated by Hunting Island. Several campsites and lodge rooms were considered seasonal because they were closed due to covid. Used a more accurate report to pull stable information
South Dakota	Cabins/cottages, by this survey's definition, also include what South Dakota considers state run lodges. All restaurants included in this facility inventory are operated by concessioners.
Vermont	Information provided by Kaitlin Alford Parks Communications and Customer Service Assistant. Primitive paddling site at Kingsland Bay previously unreported.
Virginia	Majority of team on this project is new - VSP Team did a deep dive to ensure this year's data is correct. Unsure of reason or duration of previous mistakes
Washington	There are additionally 103 year-round and 12 seasonal cabins that do not currently meet the AIX definition of cabin. Total cabins (& vacation houses) in Washington Parks is 274: 251 year-round and 23 seasonal. (Updated 2021) Group sleeping facilities include Retreat Centers as they are "structures" that accommodate large groups. Sixty-six group camping sites included within the AIX definition of "improved campsites". (Updated 2020)
Wyoming	Campsites with electricity defined as improved, without electricity are primitive.

**Table 3A: Visitation and Use - Attendance**  
**(page 1 of 7)**

This table comprises three subsections, Table 3A, Table 3B and Table 3C. State park visitation, or attendance, is reported separately for “day” use and “overnight” use, and by “fee” areas and “non-fee” areas.

STATE	Fee Areas			Non-Fee Areas		
	Day	Overnight	Total	Day	Overnight	Total
Alabama	2,828,329	1,230,321	4,058,650	1,340,443	-	1,340,443
Alaska	925,630	99,628	1,025,258	-	-	-
Arizona	1,982,750	979,338	2,962,088	24,002	-	24,002
Arkansas	-	-	-	7,953,666	756,767	8,710,433
California	22,763,622	6,595,351	29,358,973	51,752,707	-	51,752,707
Colorado	18,583,472	730,439	19,313,911	-	-	-
Connecticut	12,983,899	67,333	13,051,232	4,288,821	28,924	4,317,745
Delaware	5,714,444	455,626	6,170,070	1,555,580	-	1,555,580
Florida	26,836,973	2,444,551	29,281,524	-	-	-
Georgia	12,165,190	-	12,165,190	-	-	-
Hawaii	1,142,500	45,301	1,187,801	4,458,510	-	4,458,510
Idaho	8,127,352	733,323	8,860,675	-	-	-
Illinois	74,399	9,632,625	9,707,024	42,475	-	42,475
Indiana	16,034,263	3,142,204	19,176,467	-	-	-
Iowa	3,167,522	16,844	3,184,366	12,715,018	1,103,690	13,818,708
Kansas	5,816,107	1,794,768	7,610,875	-	-	-
Kentucky	-	-	-	-	-	-
Louisiana	717,167	828,149	1,545,316	-	-	-
Maine	1,496,262	341,567	1,837,829	1,381,165	-	1,381,165
Maryland	18,642,895	974,824	19,617,719	2,071,433	108,314	2,179,747
Massachusetts	6,278,352	121,418	6,399,770	20,000,000	-	20,000,000
Michigan	34,201,049	3,883,909	38,084,958	-	-	-
Minnesota	11,613,140	1,200,905	12,814,045	-	-	-
Mississippi	348,363	790,406	1,138,769	-	-	-
Missouri	79,799	-	79,799	20,790,451	1,384,936	22,175,387
Montana	3,578,129	80,945	3,659,074	-	-	-
Nebraska	8,412,117	644,239	9,056,356	-	-	-
Nevada	4,238,439	420,973	4,659,412	209,072	-	209,072
New Hampshire	1,079,031	126,482	1,205,513	-	-	-
New Jersey	5,762,489	114,811	5,877,300	9,500,595	-	9,500,595
New Mexico	1,504,879	2,921,237	4,426,116	-	-	-
New York	67,672,709	1,965,081	69,637,790	7,063,851	-	7,063,851
North Carolina	3,640,848	217,675	3,858,523	19,334,090	222,148	19,556,238
North Dakota	1,522,755	293,887	1,816,642	-	-	-
Ohio	-	-	-	40,000,000	3,245,974	43,245,974
<i>Oklahoma</i>	<i>102,380</i>	<i>26,286</i>	<i>128,666</i>	<i>9,744,174</i>	<i>1,652,521</i>	<i>11,396,695</i>
Oregon	12,588,280	1,236,366	13,824,646	40,471,776	1,483,334	41,955,110
Pennsylvania	198,441	2,178,461	2,376,902	44,248,920	-	44,248,920
Rhode Island	1,376,531	97,856	1,474,387	10,047,770	-	10,047,770
South Carolina	7,465,286	1,635,686	9,100,972	1,164,555	129,210	1,293,765
South Dakota	8,433,343	1,274,690	9,708,033	553,947	9,338	563,285
Tennessee	-	-	-	33,913,917	2,455,818	36,369,735
Texas	5,445,111	3,046,546	8,491,657	280,982	-	280,982
Utah	9,060,342	3,020,114	12,080,456	-	-	-
Vermont	559,546	442,201	1,001,747	-	-	-
Virginia	6,195,252	1,723,321	7,918,573	67,508	-	67,508
Washington	42,787,432	-	42,787,432	-	2,577,062	2,577,062
West Virginia	88,183	95,886	184,069	6,702,514	766,472	7,468,986
Wisconsin	20,827,003	-	20,827,003	927,081	-	927,081
Wyoming	3,376,209	468,306	3,844,515	2,378,975	-	2,378,975
Total	428,438,214	58,139,879	486,578,093	354,983,998	15,924,508	370,908,506

**Table 3A: Visitation and Use – Attendance**  
(page 2 of 7)

STATE	Total of All Areas		
	Day	Overnight	Total
Alabama	4,168,772	1,230,321	5,399,093
Alaska	925,630	99,628	1,025,258
Arizona	2,006,752	979,338	2,986,090
Arkansas	7,953,666	756,767	8,710,433
California	74,516,329	6,595,351	81,111,680
Colorado	18,583,472	730,439	19,313,911
Connecticut	17,272,720	67,333	17,340,053
Delaware	7,270,024	455,626	7,725,650
Florida	26,836,973	2,444,551	29,281,524
Georgia	12,165,190	-	12,165,190
Hawaii	5,601,010	45,301	5,646,311
Idaho	8,127,352	733,323	8,860,675
Illinois	116,874	9,632,625	9,749,499
Indiana	16,034,263	3,142,204	19,176,467
Iowa	15,882,540	1,120,534	17,003,074
Kansas	5,816,107	1,794,768	7,610,875
Kentucky	-	-	8,828,021
Louisiana	717,167	828,149	1,545,316
Maine	2,877,427	341,567	3,218,994
Maryland	20,714,328	1,083,138	21,797,466
Massachusetts	26,278,352	121,418	26,399,770
Michigan	34,201,049	3,883,909	38,084,958
Minnesota	11,613,140	1,200,905	12,814,045
Mississippi	348,363	790,406	1,138,769
Missouri	20,870,250	1,384,936	22,255,186
Montana	3,578,129	80,945	3,659,074
Nebraska	8,412,117	644,239	9,056,356
Nevada	4,447,511	420,973	4,868,484
New Hampshire	1,079,031	126,482	1,205,513
New Jersey	15,263,084	114,811	15,377,895
New Mexico	1,504,879	2,921,237	4,426,116
New York	74,736,560	1,965,081	76,701,641
North Carolina	22,974,938	217,675	23,192,613
North Dakota	1,522,755	293,887	1,816,642
Ohio	40,000,000	3,245,974	43,245,974
<i>Oklahoma</i>	<i>9,846,554</i>	<i>1,678,807</i>	<i>11,525,361</i>
Oregon	53,060,056	2,719,700	55,779,756
Pennsylvania	44,447,361	2,178,461	46,625,822
Rhode Island	11,423,791	97,856	11,521,647
South Carolina	8,629,841	1,764,896	10,394,737
South Dakota	8,987,290	1,274,690	10,261,980
Tennessee	33,913,917	2,455,818	36,369,735
Texas	6,937,195	3,057,681	9,994,876
Utah	9,060,342	3,020,114	12,080,456
Vermont	559,546	442,201	1,001,747
Virginia	6,262,760	1,723,321	7,986,081
Washington	42,787,432	2,577,062	45,364,494
West Virginia	6,790,697	862,358	7,653,055
Wisconsin	21,754,084	-	21,754,084
Wyoming	5,755,184	468,306	6,223,490
Total	784,632,804	73,815,112	867,275,937

**Table 3B: Visitation and Use – Overnight Visitation  
(page 3 of 7)**

	Overnight Visitor by Type of Accommodations					Total
	Campers	Lodges	Cabins	Other	Group	
<b>STATE</b>					<b>Facilities</b>	
Alabama	981,854	71,261	108,610	60,370	9,517	1,231,612
Alaska	10,205	-	34,423	-	-	44,628
Arizona	928,815	-	50,523	-	-	979,338
Arkansas	591,541	64,404	91,269	8,372	181	755,767
California	5,896,782	-	-	289,365	-	6,186,147
Colorado	698,070	-	15,060	274	17,035	730,439
Connecticut	95,523	-	1,333	-	-	96,856
Delaware	409,396	-	40,419	-	6,904	456,719
Florida	2,444,551	-	108,806	-	-	2,553,357
Georgia	1,752,796	-	289,816	44,172	10,540	2,097,324
Hawaii	34,265	-	11,036	-	-	45,301
Idaho	669,959	475	39,291	11,733	5,877	727,335
Illinois	453,197	209,050	-	-	-	662,247
Indiana	2,657,977	266,252	138,179	-	79,796	3,142,204
Iowa	1,018,923	23,444	73,099	-	5,068	1,120,534
Kansas	1,703,640	-	91,128	-	220	1,794,988
Kentucky	728,100	187,500	165,500	-	-	1,081,100
Louisiana	579,618	12,754	193,331	-	42,446	828,149
Maine	341,567	-	-	-	-	341,567
Maryland	693,106	-	67,258	-	47,926	808,290
Massachusetts	495,174	-	12,060	-	-	507,234
Michigan	3,883,909	12,000	105,364	-	35,692	4,036,965
Minnesota	1,179,999	360	71,497	-	-	1,251,856
Mississippi	709,235	2,703	76,255	-	2,213	790,406
Missouri	1,202,289	-	171,577	-	11,070	1,384,936
Montana	112,895	-	3,204	185	2,447	118,731
Nebraska	584,869	5,194	54,716	-	-	644,779
Nevada	420,451	-	522	-	-	420,973
New Hampshire	124,106	-	2,076	-	-	126,182
New Jersey	99,932	-	1,819	-	6,661	108,412
New Mexico	2,921,237	-	-	-	-	2,921,237
New York	1,682,776	-	282,305	-	-	1,965,081
North Carolina	417,031	427	13,095	-	9,270	439,823
North Dakota	277,533	-	16,354	-	-	293,887
Ohio	2,633,618	220,104	347,638	30,132	14,482	3,245,974
<i>Oklahoma</i>	<i>1,163,753</i>	<i>83,370</i>	<i>175,379</i>	<i>10,429</i>	<i>245,876</i>	<i>1,678,807</i>
Oregon	2,577,773	1,624	116,003	-	24,300	2,719,700
Pennsylvania	1,696,722	10,556	337,470	-	133,713	2,178,461
Rhode Island	94,030	-	3,826	-	-	97,856
South Carolina	1,620,831	17,421	113,484	-	13,160	1,764,896
South Dakota	1,169,560	4,676	102,706	-	-	1,276,942
Tennessee	1,635,620	136,375	251,507	251,506	180,810	2,455,818
Texas	2,629,704	9,994	305,421	-	38,038	2,983,157
Utah	372,476	-	19,695	5,682	65,458	463,311
Vermont	865,609	17	6,339	-	-	871,965
Virginia	1,161,802	-	561,519	-	-	1,723,321
Washington	2,290,410	-	83,246	203,264	142	2,577,062
West Virginia	472,200	190,982	199,176	-	1,033	863,391
Wisconsin	2,081,464	-	-	5,107	248,000	2,334,571
Wyoming	456,303	-	8,991	-	3,012	468,306
<b>Total</b>	<b>59,723,196</b>	<b>1,530,943</b>	<b>4,962,325</b>	<b>920,591</b>	<b>1,260,887</b>	<b>68,397,942</b>

**Table 3C: Visitation and Use – Overnight Facility Utilization  
(page 4 of 7)**

STATE	Numbers of Campsite Nights Rented			
	Year	Seasonal	Total	Days in
	<b>Round</b>			<b>Season</b>
Alabama	409,238	-	409,238	365
Alaska	-	4,264	4,264	150
Arizona	258,855	-	258,855	-
Arkansas	254,594	-	254,594	-
California	874,597	-	874,597	-
Colorado	-	-	515,768	-
Connecticut	-	77,386	77,386	186
Delaware	78,751	44,576	123,327	215
Florida	873,653	-	873,653	365
Georgia	438,199	-	438,199	-
Hawaii	21,255	-	21,255	-
Idaho	62,627	137,132	199,759	98
Illinois	-	-	-	-
Indiana	714,447	-	714,447	365
Iowa	-	317,326	317,326	180
Kansas	449,114	-	449,114	365
Kentucky	-	-	242,702	245
Louisiana	148,335	-	148,335	-
Maine	-	127,928	127,928	137
Maryland	12,834	169,554	182,388	244
Massachusetts	-	169,078	169,078	123
Michigan	273,929	1,095,716	1,369,645	210
Minnesota	408,384	-	408,384	180
Mississippi	236,412	-	236,412	365
Missouri	351,692	37,069	388,761	213
Montana	78,777	73,596	152,373	125
Nebraska	1,583,669	-	1,583,669	273
Nevada	157,472	-	157,472	-
New Hampshire	1,672	103,229	104,901	365
New Jersey	43,464	26,558	70,022	214
New Mexico	108,724	-	108,724	-
New York	105	502,393	502,498	150
North Carolina	180,757	122,708	303,465	211
North Dakota	-	93,272	93,272	365
Ohio	841,591	-	841,591	-
<i>Oklahoma</i>	<i>775,835</i>	<i>-</i>	<i>775,835</i>	<i>365</i>
Oregon	560,632	91,736	652,368	245
Pennsylvania	62,991	425,251	488,242	240
Rhode Island	-	82,975	82,975	205
South Carolina	454,959	95,713	550,672	221
South Dakota	291,602	77,224	368,826	365
Tennessee	467,320	-	467,320	365
Texas	905,702	-	905,702	-
Utah	118,219	124,949	243,168	-
Vermont	-	139,611	137,658	175
Virginia	53,419	256,219	309,638	271
Washington	711,179	132,128	843,307	201
West Virginia	52,675	124,136	176,811	200
Wisconsin	594,704	-	594,704	365
Wyoming	153,105	-	153,105	365
Total	14,065,489	4,651,727	19,473,733	9,292

**Table 3C: Visitation and Use – Overnight Facility Utilization  
(page 5 of 7)**

STATE	Number of Cabins/Cottages Nights Rented			
	Year	Seasonal	Total	Days in
	<b>Round</b>			<b>Season</b>
Alabama	38,978	-	38,978	365
Alaska	14,052	103	14,155	200
Arizona	14,836	-	14,836	-
Arkansas	35,180	-	35,180	-
California	22,687	-	22,687	-
Colorado	-	-	8,670	-
Connecticut	-	1,092	1,092	83
Delaware	11,752	436	12,188	244
Florida	130,663	-	130,663	365
Georgia	72,454	-	72,454	-
Hawaii	7,901	-	7,901	-
Idaho	6,585	6,488	13,073	98
Illinois	-	-	-	365
Indiana	14,724	11,685	26,409	213
Iowa	7,403	11,752	19,155	180
Kansas	22,782	-	22,782	300
Kentucky	55,173	-	55,173	365
Louisiana	24,967	-	24,967	-
Maine	-	-	-	-
Maryland	8,059	8,521	16,580	365
Massachusetts	-	5,976	5,976	123
Michigan	26,232	6,559	32,791	-
Minnesota	22,076	-	22,076	180
Mississippi	25,765	-	25,765	365
Missouri	19,436	41,496	60,932	213
Montana	1,108	946	2,054	125
Nebraska	79,090	32,814	111,904	214
Nevada	214	-	214	-
New Hampshire	379	1,459	1,838	175
New Jersey	693	44	737	214
New Mexico	-	-	-	-
New York	35,421	57,588	93,009	180
North Carolina	6,921	478	7,399	202
North Dakota	-	4,785	4,785	365
Ohio	93,396	-	93,396	-
<i>Oklahoma</i>	<i>116,920</i>	<i>-</i>	<i>116,920</i>	<i>365</i>
Oregon	15,128	1,144	16,272	245
Pennsylvania	53,628	35,886	89,514	240
Rhode Island	-	2,526	2,526	205
South Carolina	36,473	912	37,385	234
South Dakota	24,150	8,676	32,826	365
Tennessee	71,859	-	71,859	365
Texas	85,311	-	85,311	-
Utah	6,394	2,600	8,994	150
Vermont	-	1,973	1,973	175
Virginia	62,359	6,769	69,128	271
Washington	25,685	2,131	27,816	200
West Virginia	59,660	12,233	71,893	290
Wisconsin	-	1,459	1,459	173
Wyoming	2,997	-	2,997	365
<b>Total</b>	<b>1,359,491</b>	<b>268,531</b>	<b>1,636,692</b>	<b>9,142</b>

**Table 3C: Visitation and Use – Overnight Facility Utilization  
(page 6 of 7)**

STATE	Numbers of Lodge Nights Rented			Days in Season
	Year Round	Seasonal	Total	
Alabama	95,781	-	95,781	365
Alaska	-	-	-	-
Arizona	-	-	-	-
Arkansas	30,948	-	30,948	-
California	-	-	-	-
Colorado	-	-	-	-
Connecticut	-	-	-	-
Delaware	-	-	-	-
Florida	5,871	-	5,871	365
Georgia	-	-	-	-
Hawaii	-	-	-	-
Idaho	23	394	417	98
Illinois	116,777	-	116,777	365
Indiana	101,978	5,076	107,054	213
Iowa	-	9,257	9,257	306
Kansas	-	-	-	-
Kentucky	93,751	-	93,751	360
Louisiana	1,526	-	1,526	-
Maine	-	-	-	-
Maryland	-	-	-	-
Massachusetts	-	-	-	-
Michigan	1,700	-	1,700	-
Minnesota	2,100	-	2,100	180
Mississippi	1,448	-	1,448	365
Missouri	-	-	-	213
Montana	-	-	-	-
Nebraska	2,987	2,345	5,332	244
Nevada	-	-	-	-
New Hampshire	-	-	-	-
New Jersey	-	-	-	-
New Mexico	-	-	-	-
New York	-	-	-	-
North Carolina	298	-	298	-
North Dakota	-	-	-	-
Ohio	115,844	-	115,844	-
<i>Oklahoma</i>	<i>55,580</i>	<i>-</i>	<i>55,580</i>	<i>365</i>
Oregon	235	257	492	245
Pennsylvania	4,512	101	4,613	219
Rhode Island	-	-	-	-
South Carolina	3,036	2,771	5,807	218
South Dakota	791	-	791	365
Tennessee	54,550	-	54,550	365
Texas	4,580	-	4,580	-
Utah	-	-	-	-
Vermont	3	-	3	10
Virginia	-	-	-	-
Washington	-	-	-	-
West Virginia	95,267	2,271	97,538	-
Wisconsin	-	-	-	-
Wyoming	-	-	-	-
<b>Total</b>	<b>789,586</b>	<b>22,472</b>	<b>812,058</b>	<b>4,861</b>



**Table 3C: Visitation and Use  
(page 7 of 7)**

**Explanatory Notes**

<b>STATE</b>	<b>NOTES</b>
Alaska	All numbers are from facilities currently on Reserve America. ASP has not been able to keep visitor counts or occupancy numbers on facilities not currently RA.
Arizona	Attendance numbers include parks being operated by partners. Fees are not collected at Granite Mountain Hotshots Memorial SP or McFarland State Historic Park, which now serves as the City of Florence Visitor Center
Arkansas	some grp overnight guests were included in meeting rm rental - not broken out
California	Due to COVID-19 staffing, specific camping data based on comparison of previous year's data.
Florida	Overnight visitors by type of accomodation data unavailable. Camper count represents total of all site types and cabins.
Hawaii	Attendance numbers represent a combination of hard-counts from reservations, historical use data for a number of our open land areas, a reduction of various% caused by varying months of closure due to Covid-19 precautions. Camping and Lodging numbers are hard-count numbers. We are implementing reservation systems at a number of areas so these numbers will be refined in the coming years.
Idaho	Other=Group Campsites
Illinois	IL DNR does not track individual overnight attendance at lodging / campsites only number of nights rented. Overnight accommodations are not differentiated between camping and cabins
Indiana	Permanent Note: Cabin rentals include rentacamps and cottages from Lincoln/Shakamak. Campsites include all camping types, group camps, rally camps, youth tents. Lodge cabins are included with lodge nights. Facility Utilization Detail Report run for all facility types.
Maryland	campsite = campsite, group, youth group, overflow, yurt. Cabins = full service cabins, mini cabins, rustic cabins, houses
Massachusetts	Some data is carried over from FY20. Attendance figures are estimated.
Michigan	Closed to visitors for part of the year
Nevada	Visitation was down in 2020 due to park closures and event cancellations caused by the COVID-19 pandemic. These parks show increases in the 2021 reporting period months. Parks that remained opened during 2020 show visitation increases during these reporting period months, but decreases in 2021. Northern California wildfires, drove patrons east to Nevada State Parks. Construction to Berlin caused a decrease in visitation toward the end of the reporting period. Van Sickle and Mormon Station considered non-fee areas.
New Hampshire	Fee area attendance excludes comps. Non-fee area attendance is not reported (Crawford Notch, Hampton Beach, Mt Washington, Franconia Notch excluding attractions.) Many cabins opened late in the season due to COVID-19. Added winter camping at Cannon RV Park.
New Mexico	State Park operations resumed normal operations on July 1, 2021.
New York	Campgrounds were closed June 2020 due to Covid-19 restrictions, resulting in 30 less camping days for FY 2020-2021
Ohio	For Day Visitor Attendance, the figure listed is a very broad estimate. Ohio has no specific method for calculating day use visitors as Ohio has no entrance fees or parking passes, and Ohio does not do any type of manual visitor counting due to multiple access points for most parks. Seasonal campsites are concession operated and we don't have visitation numbers for these sites.
<i>Oklahoma</i>	<i>FY19-20 data were used</i>
Oregon	Campsites are all sites except cabins, yurts, and tepees. "Cabins" are cabins, yurts, and tepees. Lodge Rooms include Wolf Creek for year round and Frenchglen for seasonal (closed in winter).
Pennsylvania	This includes the COVID bump for nights rented as PA State Parks were open.
Rhode Island	For "Campers" we defined as campsites (all sites except cabins)
South Dakota	SD includes facilities operated by concessioners in the facilities report in Table 2. However, visitation numbers are not readily available from our concessioners and, therefore, are not include in the visitation information in Table 3. State operated lodge numbers are included in the cabin and cottage definition.
Utah	There are not lodge facilities in the Utah State Parks at this time.
Vermont	COVID still an issue. For 'cabins' included both cabins and cottages; Lodges = Seyon & Stone Hut
Virginia	Yurts and camping cabins included in cabin/cottage totals
Washington	Washington State Parks group facilities shows a significant decrease in attendance. Due to the COVID-19 pandemic our retreat centers (group facilities) were closed in FY 21, with only 1 facility operating during this time. The number of Cabins (that meet the AIX definition) only increased by two in FY21. However, the seasonality (number of days available) increased because some were made year-round and others extended the length of their season.

**Table 3D: Overnight Reservation System  
(page 1 of 2)**

Overnight Reservation Systems			
STATE	Centralized Reservation System(s) Used	If Yes, List System Provider(s)	Reservation System Data for AIX Reporting (Y/N)?
Alabama	Yes	Megasys Portfolio/ US e Direct	-
Alaska	Yes	Reserve America	Yes
Arizona	Yes	Itinio	Yes
Arkansas	Yes	Maestro/Reswave	Yes
California	Yes	ReserveCalifornia	Yes
Colorado	Yes	Aspira	Yes
Connecticut	Yes	Aspira/Reserve America	Yes
Delaware	Yes	Reserve America/Aspira	Yes
Florida	Yes	US eDirect	Yes
Georgia	Yes	Aspira One	Yes
Hawaii	Yes	Hawaii Information Consortium	Yes
Idaho	Yes	reserve America	Yes
Illinois	Yes	ExploreMoreIL	Yes
Indiana	Yes	Aspira	Yes
Iowa	Yes	ReserveAmerica (Aspira)	Yes
Kansas	Yes	Reserve America	Yes
Kentucky	Yes	Reserve America & Megasys	Yes
Louisiana	Yes	Aspira	Yes
Maine	Yes	NIC/InforME	Yes
Maryland	Yes	CAMIS	Yes
Massachusetts	Yes	ReserveAmerica	Yes
Michigan	Yes	Camis	Yes
Minnesota	Yes	US eDirect	Yes
Mississippi	Yes	Aspira	Yes
Missouri	Yes	USEDirect	Yes
Montana	Yes	Aspira One	Yes
Nebraska	Yes	Aspira	Yes
Nevada	No	-	No
New Hampshire	Yes	Reserve America	Yes
New Jersey	Yes	NIC USA	Yes
New Mexico	Yes	Reservie America	No
New York	Yes	Aspira	Yes
North Carolina	Yes	Aspira One	Yes
North Dakota	Yes	Leisure Interactive	Yes
Ohio	Yes	USEDirect	Yes
<b>Oklahoma</b>	<b>Yes</b>	<b>Megasys</b>	<b>Yes</b>
Oregon	Yes	Reserve America	Yes
Pennsylvania	Yes	RA Outdoors, dba Aspria	Yes
Rhode Island	Yes	Reserve America Aspira	Yes
South Carolina	Yes	Itinio	Yes
South Dakota	Yes	Leisure Interactive	Yes
Tennessee	Yes	Rev'd Up (Itinio); HMS Megasys	Yes
Texas	Yes	Aspira	Yes
Utah	Yes	Aspira	Yes
Vermont	Yes	Aspira	Yes
Virginia	Yes	Aspira	Yes
Washington	Yes	CAMIS	Yes
West Virginia	Yes	Inntopie, RoomMaster, Camplife	No
Wisconsin	Yes	CAMIS	Yes
Wyoming	Yes	Reserve America/Aspira	Yes

**Table 3D: Overnight Reservation System  
(page 2 of 2)  
Explanatory Notes**

<b>STATE</b>	<b>Notes on Reservation System Data Usage</b>
Alaska	Cabins, some campgrounds, and some pavilions
Arizona	Itinio is used to track all visitation, including overnight use at Arizona State Parks. Excluding parks run by local partners.
Arkansas	central resv system used for overnight guests only. Day use visitors are provided at the park level
Colorado	All items are from our system. The system contains all data related to camping customers, camping reservations, and pass and license sales.
Delaware	Used for analysis of reservation trends
Florida	Centralized reservation system is the primary data source for all attendance and revenue data entered here.
Hawaii	Rsservation system stats used only for fee areas
Idaho	Occupancy, day use, facility utilization, resident/non-resident usage,
Illinois	Used for a portion of the overnight attendance. Also, can capture attendance from day-use shelters
Indiana	type of overnight, but not used for total overnight. We use the reservation system data for other key metrics such as: reservation methods - 87% of our guests are now reserving online instead of via reservation phone line or at park, also use it to determine % of in-state vs. out-of-state overnight guest usage - IN is split about 83% residents camp with us, and 17% are out-of-state guests who stay overnight in campgrounds. We also use the data to determine which campsites are most popular at each park, checking occupancy rates for each site and also by park over a given period of time,etc.
Iowa	We use reports for overnight data including occupancy and starting to look at forecasting.
Kansas	Occuapancy Report, Park Revenue Report
Massachusetts	overnight numbers
Minnesota	All data for AIX report generated by using Tableau software and connecting to vendor's Tableau server directly
Mississippi	Aspira Park Revenue Reports
Missouri	Tables 3a, 3c, and 3d overnight visitor and facilities data came from the reservation system. Data for table 5e came from the the State Accounting System, using data that was interfaced from the reservation system. Other data collected includes occupancy and retail merchandise sales.
New Mexico	Data is based on field ops generated data.
New York	OPRHP uses ASPIRA to track attendance and occupancy rates.
North Carolina	overnight visitation, revenue, nights, seasonality,
North Dakota	we use for overnight camping
Ohio	Facility and attendance data is pulled from reservation system reports, with the exception of concession operated facilities.
<i>Oklahoma</i>	<i>FY19-20 data were used</i>
Oregon	OPRD uses reservation system data provided by Aspira to determine the number of rental nights and utilizes a multiplier to estimate overnight attendance.
Pennsylvania	We use the reservation system data on Attendance, Revenue, Facility Inventory counts and Nights Utilized.
Rhode Island	All overnight data based on centralized reservation system data
South Carolina	We use the occupancy report for number of nights used, and multiply by the average number of guests per site.
South Dakota	Fees & number of nights are collected from the Reservation System.
Vermont	Facilities, visitation, and revenue derived from system
Virginia	We use the reservation system for the number of camper and cabin nights, and for the overnight portion of the attendance figures. We maintain a separate system to calculate the day use vistation
Washington	For overnight accommodations, 79 of 97 parks were on the reservation system. The customer reports the number of people in their site. Other key metrics: we use zip codes for customer demographics.
Wyoming	Used rez system in part for overnight visitors. Num visitors multiplied by 3 (average num visitors, since we charge per vehicle)

**Table 4: Capital Expenses  
(page 1 of 2)**

Capital expenditure consists of new land acquisitions and new construction of state park improvements.

STATE	By Purchase		By Other Means		Total Acreage Acquired	New Construction Costs
	Acreage	Cost	Acreage	Value		
Alabama	-	-	-	-	-	-
Alaska	-	-	-	-	-	2,565,520
Arizona	-	-	-	-	-	-
Arkansas	-	-	-	-	-	-
California	-	-	-	-	-	-
Colorado	2,101	2,680,000	5,981	1,083,000	8,082	14,462,303
Connecticut	804	2,160,000	210	2,407,000	1,014	11,761,757
Delaware	2	-	9	71,000	11	7,981,731
Florida	-	-	23,558	-	23,558	61,309,805
Georgia	-	-	-	-	-	4,684,615
Hawaii	-	-	-	-	-	14,600,000
Idaho	-	-	-	-	-	12,040,747
Illinois	1,238	6,893,319	670	1,615,000	1,908	-
Indiana	-	-	-	-	-	34,673,040
Iowa	127	369,500	-	-	127	11,370,916
Kansas	-	-	-	-	-	-
Kentucky	2,037	1,527,596	-	-	2,037	-
Louisiana	-	-	15	35,000	15	-
Maine	357	1,000,000	-	-	357	-
Maryland	388	-	-	-	388	-
Massachusetts	2,159	4,968,000	247	495,000	2,406	-
Michigan	471	759,330	35	-	506	-
Minnesota	-	-	-	-	-	-
Mississippi	-	-	-	-	-	-
Missouri	-	-	-	-	-	341,416
Montana	-	-	-	-	-	-
Nebraska	-	-	-	-	-	-
Nevada	-	-	-	-	-	3,448,225
New Hampshire	-	-	-	-	-	899,464
New Jersey	2,300	17,881,239	173	-	2,473	-
New Mexico	-	-	-	-	-	-
New York	2,901	29,379,730	-	-	2,901	125,000,000
North Carolina	1,760	16,872,209	497	2,534,367	2,257	-
North Dakota	-	-	-	-	-	-
Ohio	1,917	3,136,175	-	-	1,917	116,064,711
Oklahoma	-	-	4,665	-	4,665	-
Oregon	15	285,000	61	-	76	1,357,606
Pennsylvania	209	8,710,603	-	-	209	31,000,000
Rhode Island	235	2,030,000	-	-	235	5,538,662
South Carolina	311	840,000	-	-	311	-
South Dakota	-	-	-	-	-	-
Tennessee	1,000	3,255,210	139	5,015,500	1,139	7,065,300
Texas	801	8,508,934	303	1,600,000	1,104	32,407,046
Utah	-	-	-	-	-	-
Vermont	-	-	-	-	-	-
Virginia	239	811,167	7	5,207,230	246	9,566,486
Washington	92	1,785,000	-	-	92	35,393,878
West Virginia	-	-	-	-	-	-
Wisconsin	317	755,254	-	-	317	3,631,822
Wyoming	-	-	-	-	-	4,152,000
Total	21,780	114,608,266	36,571	20,063,097	58,352	551,317,050

**Table 4: Capital Expenses  
(page 2 of 2)  
Explanatory Notes**

<b>STATE</b>	<b>NOTES</b>
Colorado	New construction costs include capital improvements to parks which may be new equipment, new park features/facilities, and/or improvements to existing park features/facilities
Connecticut	West District HQ \$11m
Georgia	Table 1 indicates an increase in property acreage compared to the previous year. That acreage includes properties previously omitted from Table 4, but now added to it. None of those properties were acquired in 2020-2021. BW
Hawaii	New construction includes Planning/design/construction projects
Indiana	For 2020/21 D. Clarkson provided: \$1.5M general rehab + \$1.048M campground rehab + \$1.125 Tippe WWTP + \$31M Governor's Deferred Maintenance Initiative
Kansas	No new land purchases in FY21
Louisiana	donation of land from American Battlefield Trust at Mansfield State Historic Site
Missouri	Cost of new construction projects started during the FY21 are less due to covid; construction projects came to almost a complete halt during that time.
Nevada	Ice Age
New Hampshire	Hampton Beach RV utility upgrades, Rye Harbor toilet building renovations, Ellacoya bathhouse renovations
New Mexico	No property acquisition to report.
Oklahoma	Quartz Mountain was transferred from Higher Regents to State Parks
Oregon	Table 4 data source: OPRD Right Of Way Agent and OPRD Operations Budget Analyst from Statewide Accounting System Queries. Note: Oregon is on a biennial budget cycle.
Pennsylvania	Purchased the David Library Property at Delaware Canal State Park and the BAC property at Presque Isle State Park. Some project highlights include: Moraine SP - Rehab 9 miles of watermain lines; Ryerson Station SP - Construction of Recreational and Educational Facilities; Caledonia SP - New Showerhouses; Yellow Creek SP - New Beach Area Building; Sinnemahoning SP - Lake Dredging and Channel Relocation; Shikellamy SP - Dock Replacement; Locust Lake SP - Campground Paving and Drainage Improvements; Presque Isle SP - Beach Sand Nourishment; Laurel Hill SP - Group Camp 2 Comfort Station; Salt Springs SP - New Vault Toilet; Delaware Canal SP - Cuttalossa Culvert Repair; Erie Bluffs SP - Rehabilitation of Elk Creek Access Road; Park Region 2 - GESA Program at all Parks.
Rhode Island	This includes \$2,341,333 local rec grants, \$590,985 State Bikeway, \$329,738 Fort Adams Trust historic preservation, \$1,475,948 RICAP, \$800.658 Bond; Echo Lake Campground Acquired 1.7. 2021
South Carolina	Acquired land for a new park, but have not opened.
Virginia	Daniel Boone Wilderness Trail Interp Center Donation
Washington	Washington State budgets on a biennial basis (every two years) and fiscal years begin on July 1. The 2019-21 biennium used for this report includes FY 20 and FY 21. New construction costs are recorded as the amount actually spent on state park capital projects from the state's capital budget for FY21. Capital expenditures include design, engineering, permitting, and construction costs. These expenditures also include re-appropriated funds for capital projects that we originally appropriated in previous biennia.
Wisconsin	For construction costs, we still have outstanding purchase orders. This number will likely changed.
Wyoming	Construction Expenditures for requested time frame.

**Table 5A: Financing – Operating Expenditures  
(page 1 of 19)**

Expenditures are reported in two general categories: operating expenditures and fixed capital expenditures. Please refer to the definition of terms section for a detailed description of each. Table 5 comprises six subsections on various aspect of financing issues. Due to the complexity of this table explanatory notes are provided after each subsection. States that provided “-” or no data are excluded from averages.

Operating Expenses - Source of Funds						
STATE	Park Generated Revenue	General Fund	Dedicated Funds	Federal Funds	Other	Total Operating Expenses
Alabama	43,961,008	-	2,398,000	-	239,601	46,598,609
Alaska	5,007,013	447,100	4,415,100	1,301,200	3,401,600	14,572,013
Arizona	16,260,400	-	8,101,800	2,968,400	3,272,300	30,602,900
Arkansas	27,913,604	13,299,126	39,436,722	-	-	80,649,452
California	95,173,726	287,379,000	333,740,000	16,147,000	38,851,000	771,290,726
Colorado	-	-	-	-	-	67,636,862
Connecticut	14,582,580	6,164,740	-	-	-	20,747,320
Delaware	19,454,263	10,254,846	850,468	194,158	91,550	30,845,285
Florida	68,755,151	370,814	88,616,675	746,257	-	158,488,896
Georgia	50,658,904	13,174,640	225,719	566,515	420,202	65,045,980
Hawaii	1,794,140	12,065,934	-	-	3,001,024	16,861,098
Idaho	9,552,400	3,240,300	5,918,200	1,651,200	449,000	20,811,100
Illinois	10,663,962	9,876,226	55,623,044	-	-	76,163,232
Indiana	60,067,253	7,890,713	-	-	-	67,957,966
Iowa	7,287,352	4,626,042	6,235,000	-	2,933,000	21,081,394
Kansas	13,989,213	-	1,590,034	2,157,843	3,999,641	21,736,731
Kentucky	44,371,700	47,149,900	-	-	-	91,521,600
Louisiana	847,496	16,764,585	16,252,102	740,066	66,308	34,670,557
Maine	-	4,755,324	1,680,403	4,449,910	-	10,885,637
Maryland	17,140,120	5,175,636	30,756,929	222,391	1,459,696	54,754,772
Massachusetts	20,443,163	91,270,627	-	610,719	616,022	112,940,531
Michigan	62,002,200	2,773,600	7,690,600	84,900	-	72,551,300
Minnesota	32,441,766	27,914,128	39,409,338	2,022,138	31,888,867	133,676,237
Mississippi	8,348,980	3,661,256	-	-	-	12,010,236
Missouri	5,903,388	-	41,267,512	4,824,875	-	51,995,775
Montana	4,565,681	-	4,306,415	626,362	1,037,699	10,536,157
Nebraska	22,194,930	7,061,411	212,929	33,924	-	29,503,195
Nevada	6,130,821	7,556,285	1,079,687	82,527	650,083	15,499,402
New Hampshire	28,302,907	-	-	-	-	28,302,907
New Jersey	9,016,714	39,604,000	11,032,797	59,966,000	-	119,619,511
New Mexico	5,366,327	8,297,300	38,400	1,670,712	-	15,372,739
New York	89,452,000	130,986,000	-	7,283,000	-	227,721,000
North Carolina	15,509,413	29,105,866	-	-	7,437,594	52,052,873
North Dakota	6,837,671	8,277,812	-	5,022,899	1,493,914	21,632,296
Ohio	36,642,136	35,252,040	2,241,914	4,004,671	-	78,140,761
<b>Oklahoma</b>	<b>25,250,378</b>	<b>9,921,020</b>	<b>-</b>	<b>2,845,876</b>	<b>507,475</b>	<b>38,524,749</b>
Oregon	29,456,679	-	15,653,272	3,909,605	9,844,612	58,864,168
Pennsylvania	30,500,000	54,326,000	-	-	23,507,000	108,333,000
Rhode Island	-	13,286,936	1,127,730	-	-	14,414,666
South Carolina	36,417,783	-	-	-	-	36,417,783
South Dakota	18,471,722	5,455,791	-	2,843,108	-	26,770,621
Tennessee	48,514,500	43,561,000	-	1,211,900	649,600	93,937,000
Texas	22,363,901	1,766,592	84,403,535	778,187	2,910,741	112,222,956
Utah	22,500,000	4,383,000	343,424	-	-	27,226,424
Vermont	7,855,432	980,203	2,449,081	159,826	2,237	11,446,779
Virginia	32,869,741	19,647,618	-	378,357	-	52,895,716
Washington	59,086,812	21,885,866	5,677,941	-	14,485	86,665,104
West Virginia	22,760,645	14,411,188	2,358,071	-	-	39,529,904
Wisconsin	16,394,731	-	2,523,624	718,244	-	19,636,599
Wyoming	6,002,172	9,001,202	-	-	960,480	15,963,854
<b>Total</b>	<b>1,239,082,879</b>	<b>1,033,021,667</b>	<b>817,656,465</b>	<b>130,222,769</b>	<b>139,705,730</b>	<b>3,427,326,372</b>

**Table 5A: Financing – Operating Expenditures**  
**(page 2 of 19)**  
**Explanatory Notes**

<b>STATE</b>	<b>NOTES</b>
Alaska	5a.5 Other sources: Inter-agency projects, capital improvement project, statutory designated program receipt
Arkansas	final revenue amounts based on AAIS - not just reservation system
California	Total Operating Expenses includes all fund sources. Other sources include donations, reimbursements and revenue incentive subaccount.
Colorado	Revenue does not tie directly to Colorado Parks and Wildlife's operating expenditures in a given fiscal year. Total operating expenses includes personal services, operating expenditures, grants to others and payments to other
Hawaii	Park Generated Revenue consists of Camping, Lodging, Entrance, Parking, and Leases and Concessions; Operating Expenses is misleading because we have a spending ceiling which prohibits us from utilizing all the funds generated. NOTE- Revenues were greatly diminished in this reporting period due to a lack of visitors to Hawaii during the COVID emergency proclamation. General Fund increase was granted by the legislature to offset revenue shortfalls.
Idaho	Other Sources: Misc. receipts (Fund 0349) and indirect cost recovery (Fund 0125)
Indiana	Actual park/inn/resale generated revenue totaled \$60,067,253, but \$67,957,966 was needed to cover operating expenses (plus the general fund of \$7.9M and other revenue of roughly \$0).
Kansas	We have received EDIF Economic Development Initiative Fund. It was placed in the general fund place. Additionally, we receive road funds which we placed in other sources with other funds added to it. Parks generated revenue includes cabins. We received State General Fund money in FY20 for FEMA projects from flooding.
Maine	Federal Funds Include Coronavirus Relief Funds
Nevada	General fund cuts due to COVID
New Hampshire	NH State Parks is extending its seasonal operations to accommodate the increase of visitors, especially the hiking and campground parks.
New York	Finance and Operating Expenditures are based on the NY Fiscal Year which runs from April 1 through March 31.
<i>Oklahoma</i>	<i>FY19-20 data were used</i>
Oregon	Park Generated Revenue detail in Table Dedicated funds: Deschutes River \$193,185; Trust and Dedicated funds \$3,816,102; Salmon Plates \$150,524; RV (includes County Opp Grant amount, but is net of Park Assistance Fund transfer to counties) \$9,521,206; Marine Board \$441,989; Rest Area \$1,089,964; Roads transfer from ODOT \$440,301. Other sources include Lottery, Interest (ATV excluded), Forest Management, beginning balances, etc. Total does not include Community Support & Grants or Debt Service.
Tennessee	Some other revenue categorized as park revenue this year
Texas	\$17,979,062 of fringe benefits not included in Operating Expenses. Nearly all dedicated funding is from the Sporting Goods Sales Tax. Current report includes expenses for vehicles, equipment, & minor repair. Previous report years did not.
Washington	Total amount of operating expenditures excludes COP (debt service), No Child Left Inside, and federal pass-thru grants.

**Table 5B: Financing – Capital Expenditures**  
**(page 3 of 19)**

Capital Expenditures - Sources of Funds

STATE	Park Generated Revenue	General Fund	Dedicated Funds	Bonds	Federal Funds	Other	Total Capital Expenditures
Alabama	3,000,000	-	2,000,000	-	-	-	5,000,000
Alaska	-	-	-	-	-	-	-
Arizona	636,700	-	-	-	-	-	636,700
Arkansas	73,110	-	259,445	-	-	-	332,555
California	-	5,000,000	7,057,682	23,577,000	-	5,349,000	40,983,682
Colorado	-	-	-	-	-	-	19,065,980
Connecticut	-	-	-	11,761,757	-	-	11,761,757
Delaware	224,644	3,329,682	-	9,943,857	2,659,276	627,636	16,785,095
Florida	68,755,151	5,269,114	34,714,842	-	4,782,171	-	113,521,277
Georgia	15,442,124	954,332	690,278	8,874,787	1,593,466	1,000,000	28,554,988
Hawaii	-	-	-	14,600,000	-	-	14,600,000
Idaho	1,974,300	226,200	6,866,700	-	1,366,600	-	10,433,800
Illinois	-	-	-	-	-	-	-
Indiana	-	-	-	-	-	34,673,040	34,673,040
Iowa	-	-	9,381,916	-	1,825,000	164,000	11,370,916
Kansas	-	-	-	-	2,157,843	742,157	2,900,000
Kentucky	-	-	-	5,947,603	-	-	5,947,603
Louisiana	5,402,400	-	457,025	2,535,520	-	-	8,394,945
Maine	-	-	265,892	-	195,161	-	461,053
Maryland	-	-	7,173,601	-	-	92,634,726	99,808,327
Massachusetts	-	-	-	30,871,408	-	-	30,871,408
Michigan	14,476,384	1,754,953	-	-	1,152,354	2,370,978	19,754,669
Minnesota	-	228,791	3,374,284	-	565,546	10,419,966	14,588,587
Mississippi	-	-	4,714,197	-	1,002,410	-	5,716,607
Missouri	2,721,565	36,528	1,932,265	121,709	16,549	-	4,828,616
Montana	270,014	-	521,475	-	3,756	-	795,245
Nebraska	4,876,195	-	8,107,927	-	670,853	-	13,654,974
Nevada	668,333	-	303,007	304,952	1,987,158	-	3,263,450
New Hampshire	-	999,063	-	-	-	-	999,063
New Jersey	-	-	48,468,932	-	-	-	48,468,932
New Mexico	176,644	-	3,513,398	-	1,028,004	-	4,718,046
New York	31,543,195	19,730,028	65,053,826	129,200,803	12,354,739	-	257,882,591
North Carolina	-	-	19,578,160	8,377,476	-	1,254,063	29,209,699
North Dakota	-	649,611	-	-	-	1,257,972	1,907,583
Ohio	2,665,564	-	376,013	33,505,331	-	-	36,546,908
<b>Oklahoma</b>	-	-	<b>18,816,202</b>	-	-	-	<b>18,816,202</b>
Oregon	-	-	289,529	-	-	8,070,402	8,359,931
Pennsylvania	-	-	-	-	-	-	-
Rhode Island	-	-	-	800,658	-	1,805,686	2,606,344
South Carolina	424,480	224,157	-	964,333	-	2,237,566	3,850,537
South Dakota	6,840,625	78,448	-	-	3,747,250	-	10,666,323
Tennessee	-	132,538,300	-	-	17,759,900	57,857,000	208,155,200
Texas	-	24,706,136	-	1,031,739	-	6,669,171	32,407,046
Utah	14,831,865	-	63,960	-	2,224,020	1,604,159	18,724,004
Vermont	-	-	-	2,894,883	132,933	-	3,027,816
Virginia	-	-	-	9,357,831	-	208,655	9,566,486
-	7,839	203,218	489,369	27,813,665	-	6,879,787	35,393,878
West Virginia	-	38,941	603,646	40,371,529	-	-	41,014,116
Wisconsin	1,184,806	427,812	175,187	8,746,524	620,825	6,790	11,161,944
Wyoming	1,516,566	-	-	-	136,138	-	1,652,704
<b>Total</b>	<b>177,712,504</b>	<b>196,395,314</b>	<b>245,248,757</b>	<b>371,603,366</b>	<b>57,981,952</b>	<b>235,832,754</b>	<b>1,303,840,628</b>



**Table 5B: Financing – Capital Expenditures  
(page 4 of 19)  
Explanatory Notes**

<b>STATE</b>	<b>NOTES</b>
California	Differences between prior year are related to project selection criteria and projects being deferred to out-years due to delays. The other sources include donations and reimbursements which are dependent on funding received from other entities.
Colorado	Revenue does not tie directly to Colorado Parks and Wildlife's capital expenditures in a given fiscal year. Capital expenditures include capital equipment, improvements, acquisitions, and information technology.
Indiana	2020/2021 – State Park Operating Budget = \$ 42,664,044 parks (Kristy) + \$25,293,922 inns (Tom/Karen) = \$67,957,966. Large amount in Table 5B (Capital Expenditures) is due to influx of deferred maintenance funds from Legislative/Governor's initiative - entire initial allotment is captured in this data for FY 2020/21 even though not spent all in current FY.
Iowa	Dedicated Funds: Marine Fuel Tax, Park and Institutional Road Fund, REAP, Lake Restoration, Park Infrastructure Fund. Other = Donations
Kansas	Road fund, Federal LWCF & NRT, CI for park projects
Maine	Federal Funds include Coronavirus Relief Funds
Mississippi	Dedicated Funds from Bureau of Building for Park improvements.
Missouri	From March 2020 – May 2021 several capital improvement projects were put on hold due to the covid pandemic. There were also purchasing issues due to supply chain demand, causing capital expenditures to decrease 46% from the previous fiscal year.
Ohio	Dedicated capital funds are from our state boating fund. These funds were for projects in state parks which directly benefit boaters, such as launch ramps, restrooms at ramps, docks, etc.
<i>Oklahoma</i>	<i>FY19-20 data were used</i>
Oregon	Table 5b: Fixed Capital Expenditures Dedicated Funds = Land Acquisitions Lottery & Federal Funds Federal Funds = Federal Funds, Facility Investment Program (FIP) Other Sources = FIP: Other Funds and Lottery Funds Data source: Operations Budget Analyst Datamart Query)
Rhode Island	Other funds are RICAP.
South Carolina	We do not separate Park Revenue and Other funds, all project expenses that are funded with park revenue and/or other funds are all paid from fund 39078010 (maintenance projects) and 39078020 (capital projects). I have to go pull the A-1 forms to see what funds were in the project to determine if it was park revenue.
Virginia	PO Mt Bike Trail Donation
Washington	FY21 Other sources from local and state grants, i.e., Recreation Conservation Office (RCO)

**Table 5C: Financing – Parks’ Share of State Expenditures  
(page 5 of 19)**

**Note:** State Operating Budget figures were retrieved from the Actual Fiscal 2020 Total State Expenditures (Capital Inclusive) in the State Expenditure Report for 2019-2021, published by the National Association of State Budget Officers (<https://www.nasbo.org/reports-data/state-expenditure-report/state-expenditure-archives>)

STATE	Share of Budget		
	State Operating Budget	State Park Operating Budget	% of State Budget
Alabama	31,638,000,000	42,013,711	0.133%
Alaska	11,930,000,000	15,024,900	0.126%
Arizona	40,784,000,000	30,602,900	0.075%
Arkansas	27,775,000,000	92,422,114	0.333%
California	357,085,000,000	676,117,000	0.189%
Colorado	35,641,000,000	86,702,842	0.243%
Connecticut	34,031,000,000	20,747,320	0.061%
Delaware	11,887,000,000	26,312,200	0.221%
Florida	85,991,000,000	95,904,825	0.112%
Georgia	60,767,000,000	48,439,934	0.080%
Hawaii	18,134,000,000	15,160,470	0.084%
Idaho	11,708,000,000	20,811,100	0.178%
Illinois	77,814,000,000	94,476,658	0.121%
Indiana	37,656,000,000	67,957,966	0.180%
Iowa	26,046,000,000	21,081,394	0.081%
Kansas	19,412,000,000	16,357,878	0.084%
Kentucky	38,434,000,000	99,833,800	0.260%
Louisiana	31,078,000,000	39,369,748	0.127%
Maine	10,545,000,000	10,885,637	0.103%
Maryland	48,576,000,000	54,754,772	0.113%
Massachusetts	63,085,000,000	100,862,752	0.160%
Michigan	59,624,000,000	78,285,000	0.131%
Minnesota	42,989,000,000	117,967,992	0.274%
Mississippi	19,919,000,000	8,739,886	0.044%
Missouri	27,310,000,000	68,073,899	0.249%
Montana	8,302,000,000	12,129,105	0.146%
Nebraska	12,901,000,000	29,849,649	0.231%
Nevada	15,074,000,000	18,525,023	0.123%
New Hampshire	6,920,000,000	43,059,859	0.622%
New Jersey	66,759,000,000	39,604,000	0.059%
New Mexico	22,347,000,000	25,917,100	0.116%
New York	172,981,000,000	227,721,000	0.132%
North Carolina	61,655,000,000	45,348,750	0.074%
North Dakota	7,058,000,000	13,573,491	0.192%
Ohio	74,556,000,000	104,659,444	0.140%
<b>Oklahoma</b>	<b>24,799,000,000</b>	<b>47,362,030</b>	<b>0.191%</b>
Oregon	48,807,000,000	87,498,276	0.179%
Pennsylvania	96,018,000,000	108,333,000	0.113%
Rhode Island	11,417,000,000	14,414,666	0.126%
South Carolina	26,949,000,000	39,124,923	0.145%
South Dakota	4,851,000,000	28,145,855	0.580%
Tennessee	36,048,000,000	91,125,300	0.253%
Texas	136,396,000,000	112,222,956	0.082%
Utah	18,155,000,000	37,117,963	0.204%
Vermont	6,175,000,000	11,919,612	0.193%
Virginia	64,426,000,000	43,374,098	0.067%
Washington	54,299,000,000	99,389,499	0.183%
West Virginia	18,496,000,000	39,557,493	0.214%
Wisconsin	51,834,000,000	17,160,800	0.033%
Wyoming	4,708,000,000	9,001,202	0.191%
Total	2,281,790,000,000	3,295,041,792	
Average			0.164%

**Table 5D: Financing – User Fees  
(page 6 of 19)**

STATE	Adult Individual					Passenger Vehicle				
	Areas	Resident	Resident	Non-Resident	Non-Resident	Areas	Resident	Resident	Non-Resident	Non-Resident
		Min	Max	Min	Max		Min	Max	Min	Max
Alabama	12	2.00	5.00	2.00	5.00	-	-	-	-	-
Alaska	-	-	-	-	-	-	-	-	-	-
Arizona	12	2.00	30.00	2.00	30.00	17	5.00	30.00	5.00	30.00
Arkansas	-	-	-	-	-	-	-	-	-	-
California	2	36.00	2.00	36.00	-	141	3.00	15.00	3.00	15.00
Colorado	43	4.00	4.00	4.00	4.00	43	9.00	11.00	9.00	11.00
Connecticut	3	2.00	6.00	2.00	6.00	26	-	-	10.00	22.00
Delaware	-	-	-	-	-	17	4.00	5.00	8.00	10.00
Florida	82	2.00	13.00	2.00	13.00	80	3.00	8.00	3.00	8.00
Georgia	15	3.00	12.00	3.00	12.00	48	5.00	5.00	5.00	5.00
Hawaii	9	-	-	5.00	5.00	9	-	-	5.00	5.00
Idaho	-	-	-	-	-	27	7.00	7.00	7.00	14.00
Illinois	-	-	-	-	-	-	-	-	-	-
Indiana	32	1.00	9.00	1.00	9.00	32	7.00	8.00	9.00	12.00
Iowa	-	-	-	-	-	-	-	-	5.00	5.00
Kansas	-	-	-	-	-	24	3.25	5.00	5.00	5.00
Kentucky	-	-	-	-	-	-	-	-	-	-
Louisiana	36	3.00	12.00	3.00	12.00	-	-	-	-	-
Maine	27	2.00	7.00	3.00	9.00	-	-	-	-	-
Maryland	-	3.00	5.00	5.00	7.00	27	3.00	5.00	5.00	7.00
Massachusetts	-	-	-	-	-	-	-	-	-	-
Michigan	-	-	-	-	-	-	12.00	17.00	10.00	10.00
Minnesota	-	-	-	-	-	71	5.00	7.00	5.00	7.00
Mississippi	22	2.00	2.00	2.00	2.00	22	-	-	-	-
Missouri	-	-	-	-	-	-	-	-	-	-
Montana	-	-	-	-	-	-	-	-	-	-
Nebraska	9	2.00	7.00	2.00	7.00	76	6.00	6.00	8.00	8.00
Nevada	25	-	2.00	2.00	2.00	22	5.00	10.00	10.00	15.00
New Hampshire	24	4.00	5.00	4.00	5.00	-	-	-	-	-
New Jersey	6	2.00	3.00	2.00	3.00	18	5.00	10.00	10.00	20.00
New Mexico	1	5.00	5.00	5.00	5.00	34	5.00	5.00	5.00	5.00
New York	58	3.00	10.00	3.00	10.00	214	5.00	10.00	5.00	10.00
North Carolina	-	-	-	-	-	3	5.00	7.00	5.00	7.00
North Dakota	-	-	-	-	-	13	7.00	7.00	7.00	7.00
Ohio	-	-	-	-	-	-	-	-	-	-
<i>Oklahoma</i>	<i>5</i>	<i>0.75</i>	<i>5.00</i>	<i>0.75</i>	<i>5.00</i>	<i>4</i>	<i>5.00</i>	<i>10.00</i>	<i>5.00</i>	<i>10.00</i>
Oregon	-	-	-	-	-	25	5.00	5.00	5.00	5.00
Pennsylvania	-	-	-	-	-	-	-	-	-	-
Rhode Island	-	-	-	-	-	8	3.00	15.00	6.00	30.00
South Carolina	32	1.00	12.00	1.00	12.00	-	-	-	-	-
South Dakota	-	8.00	8.00	8.00	8.00	66	8.00	8.00	8.00	8.00
Tennessee	-	-	-	-	-	-	-	-	-	-
Texas	89	2.00	8.00	2.00	8.00	-	-	-	-	-
Utah	-	-	10.00	-	-	32	5.00	20.00	-	-
Vermont	48	4.00	4.00	4.00	4.00	-	-	-	-	-
Virginia	-	-	-	-	-	-	-	-	-	-
Washington	-	-	-	-	-	133	10.00	10.00	10.00	10.00
West Virginia	-	-	-	-	-	1	3.00	3.00	3.00	3.00
Wisconsin	59	-	-	-	-	59	3.00	13.00	11.00	16.00
Wyoming	6	4.00	9.00	8.00	9.00	12	7.00	7.00	12.00	12.00

**Table 5D: Financing – User Fees  
(page 7 of 19)**

STATE	Adult Individual/Bus					Group/Bus				
	Areas	Resident	Resident	Non-Resident	Non-Resident	Areas	Resident	Resident	Non-Resident	Non-Resident
		Min	Max	Min	Max		Min	Max	Min	Max
Alabama	12	2.00	5.00	2.00	5.00	-	-	-	-	-
Alaska	-	-	-	-	-	-	-	-	-	-
Arizona	10	2.00	18.40	2.00	18.40	-	-	-	-	-
Arkansas	-	-	-	-	-	-	-	-	-	-
California	-	-	-	-	-	-	-	-	-	-
Colorado	-	-	-	-	-	43	10.00	50.00	10.00	50.00
Connecticut	-	-	-	-	-	15	100.00	100.00	150.00	150.00
Delaware	-	-	-	-	-	17	17.00	34.00	34.00	68.00
Florida	87	2.00	2.00	2.00	2.00	87	60.00	60.00	60.00	60.00
Georgia	-	-	-	-	-	48	30.00	50.00	30.00	50.00
Hawaii	-	-	-	-	-	9	-	-	5	5
Idaho	-	-	-	-	-	27	25.00	25.00	25.00	25.00
Illinois	-	-	-	-	-	-	-	-	-	-
Indiana	32	1.00	2.00	1.00	2.00	-	-	-	-	-
Iowa	-	-	-	-	-	-	-	-	-	-
Kansas	-	-	-	-	-	24	3.25	5.00	5.00	5.00
Kentucky	-	-	-	-	-	-	-	-	-	-
Louisiana	-	-	-	-	-	36	75.00	75.00	75.00	75.00
Maine	-	-	-	-	-	-	-	-	-	-
Maryland	27	3.00	5.00	5.00	7.00	-	-	-	-	-
Massachusetts	-	-	-	-	-	64	20.00	20.00	20.00	20.00
Michigan	-	-	-	-	-	-	18.00	18.00	18.00	18.00
Minnesota	-	-	-	-	-	-	-	-	-	-
Mississippi	22	-	-	-	-	-	-	-	-	-
Missouri	-	-	-	-	-	-	-	-	-	-
Montana	-	-	-	-	-	-	-	-	-	-
Nebraska	-	-	-	-	-	-	-	-	-	-
Nevada	22	2.00	2.00	2.00	2.00	-	-	-	-	-
New Hampshire	-	-	-	-	-	-	-	-	-	-
New Jersey	-	-	-	-	-	18	65.00	65.00	120.00	120.00
New Mexico	1	5.00	5.00	5.00	5.00	34	15.00	50.00	15.00	50.00
New York	56	3.00	10.00	3.00	10.00	213	50.00	75.00	50.00	75.00
North Carolina	-	-	-	-	-	3	20.00	20.00	20.00	20.00
North Dakota	-	-	-	-	-	13	7.00	7.00	7.00	7.00
Ohio	-	-	-	-	-	-	-	-	-	-
<i>Oklahoma</i>	-	-	-	-	-	<i>5</i>	-	<i>150.00</i>	-	<i>150.00</i>
Oregon	-	-	-	-	-	-	-	-	-	-
Pennsylvania	-	-	-	-	-	-	-	-	-	-
Rhode Island	-	-	-	-	-	2.00	40.00	80.00	40.00	80
South Carolina	32	1.00	12.00	1.00	12.00	-	-	-	-	-
South Dakota	66	3.00	3.00	3.00	3.00	-	-	-	-	-
Tennessee	-	-	-	-	-	-	-	-	-	-
Texas	89	-	-	-	-	89	-	-	-	-
Utah	40	2.00	5.00	-	-	-	-	4.00	-	4.00
Vermont	48	2.00	2.00	2.00	2.00	-	-	-	-	-
Virginia	-	-	-	-	-	37	13.00	20.00	13.00	20.00
Washington	-	-	-	-	-	133	10.00	10.00	10.00	10.00
West Virginia	-	-	-	-	-	-	-	-	-	-
Wisconsin	-	-	-	-	-	59	11.00	16.00	15.00	20.00
Wyoming	18	5.00	9.00	5.00	9.00	18	5.00	5.00	5.00	5.00

**Table 5D: Financing – User Fees  
(page 8 of 19)**

STATE	Vehicle Parking					Annual Pass				
	Areas	Resident	Resident	Non-	Non-	Areas	Resident	Resident	Non-	Non-
		Min	Max	Resident	Resident		Min	Max	Max	Resident
Alabama	2	1.00	5.00	1.00	5.00	-	-	-	-	-
Alaska	61	50.00	10.00	5.00	10.00	56	60.00	60.00	60.00	60.00
Arizona	15	5.00	5.00	5.00	5.00	26	75.00	200.00	75.00	200.00
Arkansas	-	-	-	-	-	-	-	-	-	-
California	-	30.00	100.00	30.00	100.00	-	50.00	195.00	50.00	195.00
Colorado	-	-	-	-	-	43	80.00	120.00	80.00	120.00
Connecticut	26	-	-	10.00	22.00	26	-	-	112.00	112.00
Delaware	-	-	-	-	-	17	17.50	35.00	70.00	70.00
Florida	-	-	-	-	-	97	45.00	120.00	45.00	120.00
Georgia	48	5.00	5.00	5.00	5.00	48	50.00	50.00	50.00	50.00
Hawaii	10	-	-	7.00	10.00	-	-	-	-	-
Idaho	-	-	-	-	-	27	10.00	80.00	80.00	80.00
Illinois	-	-	-	-	-	-	-	-	-	-
Indiana	1	2.00	2.00	2.00	2.00	32	50.00	50.00	70.00	70.00
Iowa	-	-	-	-	-	2	-	-	15.00	40.00
Kansas	-	-	-	-	-	24	25.00	25.00	25.00	25.00
Kentucky	-	-	-	-	-	-	-	-	-	-
Louisiana	-	-	-	-	-	36	80.00	80.00	80.00	80.00
Maine	-	-	-	-	-	27	55.00	55.00	55.00	55.00
Maryland	-	-	-	-	-	27	75.00	75.00	100.00	100.00
Massachusetts	56	2.00	14.00	2.00	2.00	56	60.00	60.00	N/A	-
Michigan	-	-	-	-	-	-	6.00	17.00	36.00	36.00
Minnesota	-	-	-	-	-	71	12.00	35.00	12.00	35.00
Mississippi	-	-	-	-	-	22	50.00	50.00	50.00	50.00
Missouri	-	-	-	-	-	-	-	-	-	-
Montana	-	-	-	-	-	-	-	-	-	-
Nebraska	-	-	-	-	-	76	30.00	30.00	45.00	45.00
Nevada	-	-	-	-	-	25	100.00	250.00	100.00	250.00
New Hampshire	8	1.00	15.00	1.00	15.00	24	60.00	105.00	60.00	120.00
New Jersey	18	5.00	10.00	10.00	20.00	19	50.00	50.00	75.00	75.00
New Mexico	34	5.00	5.00	5.00	5.00	34	40.00	40.00	40.00	40.00
New York	-	-	-	-	-	213	65.00	65.00	-	-
North Carolina	-	-	-	-	-	3	90.00	90.00	90.00	90.00
North Dakota	-	-	-	-	-	13	35.00	35.00	35.00	35.00
Ohio	-	-	-	-	-	-	-	-	-	-
<i>Oklahoma</i>	<i>1</i>	<i>5.00</i>	<i>25.00</i>	<i>20.00</i>	<i>20.00</i>	<i>1</i>	<i>25.00</i>	<i>75.00</i>	<i>25.00</i>	<i>75.00</i>
Oregon	-	-	-	-	-	25	30.00	50.00	30.00	50.00
Pennsylvania	-	-	-	-	-	-	-	-	-	-
Rhode Island	1	10	10	20	20	8	30.00	30.00	60.00	60.00
South Carolina	2	5	50	5	50	47	75.00	99.00	75.00	99.00
South Dakota	-	-	-	-	-	66	36.00	36.00	36.00	36.00
Tennessee	-	-	-	-	-	-	-	-	-	-
Texas	89	2.00	10.00	2.00	10.00	89	70.00	70.00	70.00	70.00
Utah	-	-	6	-	6	45	100.00	100.00	150.00	150.00
Vermont	-	-	-	-	-	48	90.00	90.00	90.00	90.00
Virginia	37	5.00	10.00	5.00	10.00	37	85.00	85.00	85.00	85.00
Washington	-	-	-	-	-	133	30.00	30.00	30.00	30.00
West Virginia	-	-	-	-	-	-	-	-	-	-
Wisconsin	-	-	-	-	-	59	15.50	28.00	20.50	38.00
Wyoming	-	-	-	-	-	18	42.00	48.00	89.00	96.00

**Table 5D: Financing – User Fees  
(page 9 of 19)**

STATE	Annual Senior Citizen Pass					Lodging Rental Fees			
	Areas	Resident	Resident	Non-Resident	Non-Resident	Lodge Rooms		Cabins/Cottages	
		Min	Max	Min	Max	Min	Max	Min	Max
Alabama	-	-	-	-	-	45.00	120.00	75.00	249.00
Alaska	-	-	-	-	-	-	-	35.00	100.00
Arizona	-	-	-	-	-	-	-	50.00	300.00
Arkansas	-	-	-	-	-	85.00	243.00	89.00	503.00
California	-	5.00	20.00	5.00	20.00	-	-	40.00	225.00
Colorado	43	70.00	70.00	80.00	120.00	-	-	90.00	270.00
Connecticut	26	-	-	-	-	-	-	50.00	80.00
Delaware	17	18.00	18.00	35.00	35.00	-	-	50.00	271.00
Florida	-	-	-	-	-	129.00	189.00	30.00	160.00
Georgia	48	25	25	25	25	-	-	-	-
Hawaii	-	-	-	-	-	40.00	70.00	70.00	100.00
Idaho	-	-	-	-	-	500.00	500.00	60.00	195.00
Illinois	-	-	-	-	-	70.00	289.00	70.00	289.00
Indiana	32	25.00	25.00	70.00	70.00	79.99	689.00	40.00	219.00
Iowa	-	-	-	-	-	-	-	30.00	200.00
Kansas	24	13.75	13.75	25.00	25.00	-	-	35.00	135.00
Kentucky	-	-	-	-	-	-	-	-	-
Louisiana	-	-	-	-	-	155.00	225.00	85.00	175.00
Maine	27	-	-	-	-	-	-	-	-
Maryland	27	10.00	10.00	10.00	10.00	-	-	46.75	200.00
Massachusetts	56	10.00	10.00	-	-	-	-	-	-
Michigan	-	6.00	17.00	36.00	36.00	-	-	-	-
Minnesota	-	-	-	-	-	85.00	145.00	110.00	495.00
Mississippi	-	-	-	-	-	62.00	82.00	60.00	110.00
Missouri	-	-	-	-	-	114.00	224.00	58.00	399.00
Montana	-	-	-	-	-	-	-	-	-
Nebraska	-	-	-	-	-	65.00	105.00	65.00	475.00
Nevada	25	30.00	30.00	-	-	-	-	65.00	80.00
New Hampshire	-	-	-	-	-	80.00	195.00	50.00	80.00
New Jersey	19	-	-	-	-	-	-	35.00	185.00
New Mexico	35	40.00	40.00	40.00	40.00	-	-	-	-
New York	-	-	-	-	-	-	-	38.50	275.00
North Carolina	-	-	-	-	-	113.00	178.00	36.00	110.00
North Dakota	13	28.00	28.00	-	-	-	-	60.00	125.00
Ohio	-	-	-	-	-	69.00	350.00	60.00	520.00
<i>Oklahoma</i>	<i>3</i>	<i>-</i>	<i>-</i>	<i>-</i>	<i>-</i>	<i>75.00</i>	<i>180.00</i>	<i>45.00</i>	<i>280.00</i>
Oregon	-	-	-	-	-	89.00	108.00	43.00	62.00
Pennsylvania	-	-	-	-	-	60.00	378.00	39.90	285.00
Rhode Island	8	15.00	15.00	30.00	30.00	-	-	50.00	75.00
South Carolina	47	37.50	99.00	75.00	99.00	80.00	127.00	40.00	2,000.00
South Dakota	-	-	-	-	-	135.00	345.00	55.00	1,800.00
Tennessee	-	-	-	-	-	94.00	500.00	65.00	500.00
Texas	89	-	-	-	-	100.00	170.00	18.00	320.00
Utah	45	50.00	50.00	-	-	65.00	150.00	65.00	120.00
Vermont	48	2.00	2.00	2.00	2.00	85.00	95.00	48.00	110.00
Virginia	36	40.00	40.00	40.00	40.00	-	-	76.00	493.00
Washington	-	-	-	-	-	-	-	50.00	447.00
West Virginia	-	22.50	22.50	22.50	22.50	-	-	-	-
Wisconsin	59	13.00	13.00	38.00	38.00	-	-	-	-
Wyoming	-	-	-	-	-	-	-	50.00	150.00
					Average	103.12	235.71	54.35	321.15

**Table 5D: Financing – User Fees**  
(page 10 of 19)

Campsite Rental Fees

STATE	Improved: 3 H/U		Improved: 2 H/U		Improved: 1 H/U		Improved: No H/U		Primitive	
	Min	Max	Min	Max	Min	Max	Min	Max	Min	Max
Alabama	18.00	59.00	12.00	21.00	-	-	-	-	5.00	15.00
Alaska	-	-	-	-	-	-	-	-	10.00	35.00
Arizona	20.00	50.00	20.00	50.00	20.00	50.00	15.00	25.00	15.00	25.00
Arkansas	32.00	36.00	23.00	29.00	18.00	18.00	14.00	14.00	14.00	15.00
California	-	-	25.00	100.00	-	-	10.00	60.00	10.00	40.00
Colorado	20.50	41.00	20.50	41.00	18.00	36.00	14.00	28.00	9.00	18.00
Connecticut	40.00	52.00	37.00	48.00	-	-	14.00	30.00	14.00	30.00
Delaware	27.00	55.00	22.00	60.00	25.00	50.00	15.00	50.00	20.00	40.00
Florida	16.00	42.00	16.00	42.00	16.00	42.00	-	-	5.00	5.00
Georgia	-	-	23.00	59.00	-	-	-	-	8.00	12.00
Hawaii	-	-	-	-	20.00	30.00	-	-	25.00	35.00
Idaho	-	-	28.00	32.00	26.00	30.00	12.00	24.00	12.00	24.00
Illinois	10.00	35.00	10.00	35.00	10.00	35.00	-	12.00	-	6.00
Indiana	30.00	46.00	-	-	23.00	35.00	16.00	24.00	12.00	17.00
Iowa	18.00	26.00	15.00	23.00	12.00	20.00	6.00	14.00	6.00	14.00
Kansas	22.00	24.00	21.00	23.00	19.00	21.00	12.00	12.00	12.00	12.00
Kentucky	-	-	-	-	-	-	18.00	45.00	15.00	22.00
Louisiana	18.00	33.00	18.00	25.00	18.00	25.00	18.00	18.00	9.00	18.00
Maine	-	-	25.00	45.00	-	-	-	-	15.00	25.00
Maryland	32.50	53.50	27.50	27.50	24.50	38.50	18.50	35.50	10.00	15.00
Massachusetts	-	-	32.00	45.00	23.00	33.00	17.00	27.00	8.00	10.00
Michigan	-	-	-	-	-	-	-	-	-	-
Minnesota	35.00	41.00	32.00	36.00	24.00	32.00	16.00	24.00	14.00	20.00
Mississippi	17.00	32.00	17.00	28.00	15.00	25.00	-	-	17.00	17.00
Missouri	20.00	37.00	13.00	27.00	8.00	27.00	4.00	15.00	7.00	7.00
Montana	-	-	-	-	-	-	-	-	-	-
Nebraska	35.00	37.00	30.00	32.00	25.00	27.00	15.00	17.00	10.00	12.00
Nevada	25.00	40.00	25.00	40.00	25.00	40.00	15.00	30.00	15.00	30.00
New Hampshire	40.00	50.00	35.00	35.00	-	-	25.00	30.00	23.00	23.00
New Jersey	-	-	-	-	20.00	25.00	-	-	17.00	22.00
New Mexico	18.00	18.00	14.00	14.00	14.00	14.00	10.00	10.00	8.00	8.00
New York	28.00	30.00	-	-	22.00	24.00	15.00	15.00	12.00	12.00
North Carolina	30.00	36.00	27.00	33.00	25.00	31.00	20.00	26.00	9.00	15.00
North Dakota	25.00	30.00	20.00	25.00	20.00	25.00	17.00	17.00	12.00	17.00
Ohio	32.00	45.00	-	-	21.00	36.00	17.00	32.00	19.00	28.00
<i>Oklahoma</i>	<i>25.00</i>	<i>45.00</i>	<i>22.00</i>	<i>45.00</i>	<i>20.00</i>	<i>45.00</i>	<i>16.00</i>	<i>25.00</i>	<i>16.00</i>	<i>25.00</i>
Oregon	26.00	38.00	24.00	36.00	-	-	17.00	21.00	11.00	11.00
Pennsylvania	39.25	54.00	34.25	49.00	26.25	41.00	19.25	34.00	15.25	30.00
Rhode Island	28.00	55.00	-	-	-	-	-	-	18.00	75.00
South Carolina	21.00	65.00	17.00	65.00	13.00	40.00	11.00	62.00	7.00	137.00
South Dakota	-	-	-	-	15.00	40.00	11.00	15.00	11.00	15.00
Tennessee	32.00	75.00	25.00	60.00	21.00	55.00	15.00	50.00	8.00	40.00
Texas	16.00	35.00	15.00	35.00	10.00	30.00	10.00	20.00	5.00	20.00
Utah	28.00	40.00	25.00	40.00	25.00	40.00	15.00	25.00	12.00	15.00
Vermont	-	-	-	-	-	-	19.00	39.00	15.00	18.00
Virginia	40.00	47.00	35.00	46.00	-	-	25.00	35.00	15.00	25.00
Washington	35.00	50.00	30.00	45.00	30.00	45.00	20.00	37.00	12.00	12.00
West Virginia	-	-	-	-	-	-	-	-	-	-
Wisconsin	26.00	42.00	26.00	42.00	26.00	42.00	15.00	27.00	-	-
Wyoming	-	-	-	-	20.00	28.00	10.00	18.00	10.00	18.00
Average	26.44	42.70	23.37	39.96	19.94	33.59	15.05	27.43	12.27	23.59

**Table 5D: Financing – Campsite Reservation User Fees**  
(page 11 of 19)

Campsite Rental									
STATE	Campsite Reservation	Number days in advance	Reservation Fee Charged	Reservation Fee Min	Reservation Fee Max	Fee Non-Refundable	No. People Allowed Per Site	Dogs Allowed Overnight	
Alabama	Yes	365	Yes	5.00	-	No	8	Yes	
Alaska	Yes	2	Yes	5.00	5.00	Yes	12	Yes	
Arizona	Yes	365	Yes	5.00	25.00	Yes	6	Yes	
Arkansas	Yes	365	No	-	-	Yes	8	Yes	
California	Yes	210	Yes	8.00	8.00	Yes	8	Yes	
Colorado	Yes	180	No	-	-	-	6	Yes	
Connecticut	Yes	335	Yes	9.00	-	Yes	6	Yes	
Delaware	Yes	365	Yes	4.00	4.00	Yes	8	Yes	
Florida	Yes	334	Yes	6.70	6.70	Yes	8	Yes	
Georgia	Yes	334	No	-	-	Yes	6	Yes	
Hawaii	Yes	30-90	Yes	2.00	50.00	Yes	10	No	
Idaho	Yes	274	Yes	10.00	25.00	Yes	8	Yes	
Illinois	Yes	108	Yes	5.00	5.00	Yes	8	Yes	
Indiana	Yes	180	Yes	5.00	5.00	Yes	6	Yes	
Iowa	Yes	90	Yes	4.00	6.00	Yes	6	Yes	
Kansas	Yes	180	Yes	2.75	13.75	Yes	8	Yes	
Kentucky	Yes	365	Yes	6.00	6.00	Yes	8	Yes	
Louisiana	Yes	330	Yes	6.00	6.00	Yes	8	Yes	
Maine	Yes	224	Yes	5.00	5.00	Yes	6	Yes	
Maryland	Yes	365	Yes	4.75	6.25	Yes	6	Yes	
Massachusetts	Yes	180	Yes	-	-	Yes	4	Yes	
Michigan	Yes	183	Yes	8.00	10.00	Yes	6	Yes	
Minnesota	Yes	120	Yes	7.00	10.00	Yes	6	Yes	
Mississippi	Yes	730	Yes	10.00	10.00	Yes	8	Yes	
Missouri	Yes	365	Yes	8.50	8.50	Yes	6	Yes	
Montana	-	-	-	-	-	-	-	-	
Nebraska	Yes	180	Yes	8.50	8.50	Yes	8	Yes	
Nevada	-	-	-	-	-	-	8	yes	
New Hampshire	Yes	335	Yes	6.50	6.50	Yes	4	Yes	
New Jersey	Yes	334	Yes	5.00	5.00	Yes	6	Yes	
New Mexico	Yes	180	Yes	4.00	12.00	Yes	9	Yes	
New York	Yes	270	Yes	7.25	7.25	Yes	6	Yes	
North Carolina	-	335	Yes	3.00	3.00	Yes	6	Yes	
North Dakota	Yes	95	Yes	5.80	9.00	yes	6	Yes	
Ohio	Yes	180	Yes	6.50	6.50	Yes	6	Yes	
<b>Oklahoma</b>	<b>Yes</b>	<b>335</b>	<b>Yes</b>	<b>8.00</b>	<b>20.00</b>	<b>Yes</b>	<b>4</b>	<b>Yes</b>	
Oregon	Yes	183	Yes	8.00	8.00	Yes	8	Yes	
Pennsylvania	Yes	330	Yes	6.50	6.50	Yes	5	Yes	
Rhode Island	Yes	365	Yes	8.75	9.00	Yes	6	Yes	
South Carolina	Yes	397	No	-	-	-	6	Yes	
South Dakota	Yes	90	Yes	-	7.70	Yes	6	Yes	
Tennessee	Yes	365	Yes	5.00	5.00	Yes	6	Yes	
Texas	Yes	152	No	-	-	-	8	Yes	
Utah	Yes	120	Yes	8.00	12.00	Yes	8	Yes	
Vermont	Yes	335	Yes	8.00	8.00	Yes	8	Yes	
Virginia	Yes	334	Yes	5.00	5.00	Yes	6	Yes	
Washington	Yes	274	Yes	8.00	10.00	Yes	8	Yes	
West Virginia	Yes	365	No	-	-	No	10	Yes	
Wisconsin	Yes	334	Yes	7.75	7.75	Yes	6	Yes	
Wyoming	Yes	120	Yes	4.00	8.00	Yes	10	Yes	
# Yes/Average	47	267	42	6.26	9.74	43	7	48	



**Table 5D: Financing – User Fees**  
**(page 12 of 19)**  
**Explanatory Notes**

STATE	NOTES
Alaska	Reservation transaction fees have changed to a flat \$5 per transaction for both campsites and cabins.
Arizona	If a vehicle contains more than 4 adults at a park that assesses a "per vehicle" user fee, each additional adult is \$3.00. This number is included in this category above, whereas it used to be counted in "per vehicle" category. Also, individuals who walk up to the gate and individuals on bicycle are charged \$3 entry fee at parks that typically charge by vehicle. >"Per Adult Person on bus" category now includes per adult ticket price for commercial group tours to Kartchner Caverns. >McFarland State Historic Park is not included in the fee Per Adult Person as they now serve as a the Visitor Center to the Town of Florence and no fee is charged. >During FY13 Yuma Quartermaster Depot State Historic Park began charging a fee Per Adult Person
Arkansas	No annual pass for entry
California	5d.1 - Per Adult Person: Per adult person entry/tour fees. 5d.2 - Vehicle Parking: Vehicle day use fees collected; including Off-Highway Motor Vehicle (OHMVR) units. 5d.5 - Bus Parking: Changed "vehicle" parking to represent fees charged for bus parking. Total number of units accommodating small and/or large buses not available 5d.6 - Annual Day Use Pass type: California Explorer Vehicle Day Use Annual Pass - Price: \$195.00 Number of Park Units Accepting: 134, Golden Poppy Vehicle Day Use Annual Pass - Price: \$125.00 Number of Park Units Accepting: 112, Tahoe Regional Vehicle Day Use Annual Pass - Price: \$75.00 Number of Park Units Accepting: 5, Historian Passport Day Use Admission Annual Pass - Price: \$50.00 Number of Park Units Accepting: 33, Boat Use Annual Pass - Price: \$100.00 Number of Park Units Accepting: 15, Off Highway Vehicle Annual Day Use Pass - Price: \$50.00 Number of Park Units Accepting: 7, Oversized Vehicle Pass Sticker (Oversized vehicles described as 25 feet or over in length or 9 feet or wider in width will be charged an Oversized Vehicle Fee (OVF) equal to and in addition to the park's vehicle day use fee. A vehicle pulling a trailer will also be considered an oversized vehicle except if towing a boat trailer with a valid Boat Use Annual Pass sticker or having paid a boat use fee. Not all parks can accommodate oversized vehicles and possession of the Oversized Vehicle Pass sticker does not guarantee an oversized vehicle can be physically accommodated at all parks.) 5d.7 - Annual Senior Citizen Pass - for persons 62 years of age older: Golden Bear Discount Pass with income restrictions for eligibility. Annual cost/fee is \$5.00; entitles the bearer and spouse or registered domestic partner entry to most California State Parks operated units where vehicle day use fees are collected, at no charge, Limited Use Golden Bear Pass - for persons 62 years of age or older without income restrictions for eligibility. Annual cost/fee is \$20.00; entitles the holder and spouse or registered domestic partner entry to most California State Parks operated units during non-peak season where vehicle day use fees are collected, at no charge, Senior Citizen Discount - permits year-round \$1.00 discount for vehicle day use and a \$2.00 discount for family camping in state-operated parks regardless of income status without the need to purchase any pass. 5d.8 - No state operated lodge rooms. 5d.11 - Improved Campsite with hook-ups; water and electrical hookups. Sewer hookups not provided at campsite, but dump station may be available inside the campground. 5d.13 & 5d.14 - Primitive & Improved Campsite fee applicable to "Drive-In" sites. 5d.16 - Seven months in advance on the first of the month on-sale days. 5d.22 -
Colorado	Colorado Parks and Wildlife does not offer a senior non-resident annual parks pass, therefore, non-resident seniors would pay the same price as a regular annual parks pass which is either \$80 or \$120 depending on the pass selected.
Idaho	1 H/U is considered an electric site with water. 2 H/U is electric, water, and sewer. Each Park is considered "1" fee area if they charge an MVEF.
Indiana	No entrance fee or transaction fee changes in 2020/2021. ** Record visitation/revenue for parks/camping/day use. Revenue far exceeded expenses for FY20/21.
Iowa	Resort lodge, cabins, and campsite fees are not included in the fee range as they are now operated by a private concession operation. Camping reservations can be made 3 months in advance, not 90 days.
Kansas	Updated our fees as some were incorrect based on current fees. The decimal may have contributed to some of the issue.
Maine	Maine State Parks also sell system-wide annual vehicle passes covering occupants of the passholder's vehicle (17 passenger max). Vehicle passes are sold for \$105 while a senior version costs \$45. Maine residents 65+ receive free admission (individual only).
Michigan	Michigan utilizes a Recreation Passport that is renewed with the vehicle registration for residents
Mississippi	Rate increase in May 2021 on RV Sites. Entrance fee increased from \$4.00 a vehicle to \$2.00 a person.
Missouri	Minimum price reflects off-season rates less a \$2.00 discount (applicable only to persons with disabilities, senior citizens, and military). The reservation window changed from six months in advance of arrival to one year in advance of arrival, effective on June 30, 2020.
New Hampshire	Applied Coleman Lodges to "Lodging" fees.
Oklahoma	<i>FY19-20 data were used</i>
Oregon	Table 5d Notes: Annual pass "minimum" is for the 12-month parking pass; residents and non-residents pay the same price. The "maximum" is for the 24-month parking pass. Again, there is no difference in price for residents vs. non-residents for the 24-month parking pass. The Department offers a \$5 discount on the 12-month parking pass during the month of December. Improved campsite 3 HU = Full Improved campsite 2 HU = Electric Improved campsite no HU = Tent Primitive = primitive.
Pennsylvania	Resident rate went up by \$0.25 in 2021
Rhode Island	Min/Max fee is 8.75; No Dogs allowed Charlestown Breachway/ East Beach; Cabin fees included in primitive ( No HU); Overnight Park Fees for Ft Adams Included this year; Misquamicut Beach had daily parking fee increase in 2021; 2020 left out senior fee rates for passenger vehicles
South Carolina	Started renting the Turner House on Saint Phillip's Island
Virginia	We discontinued non resident rates for parking. Previous year "lodges" was filled out incorrectly. We have large cabins that we termed "lodge" however, we have no hotel-like accommodations.
Washington	Washington State Parks does not charge entrance fees to park visitors. A \$10 day-use pass or \$30 annual Discover Pass is required to park passenger vehicles at State Parks recreational lands. Revenue generated from these parking fees are placed in "other" column.
Wisconsin	Previously, we reported only for our Parks subprogram but we decided to include our other subprograms.
Wyoming	Wyoming charges per-person for entrance at historic sites and per-vehicle for entrance and camping at parks; with differing resident and non-resident rates. We offer annual day use and annual camping permits (camping to residents only) that are tied to a specific vehicle.

**Table 5E: Financing – Revenue Sources**  
**(page 13 of 19)**

## Revenue Generated By Source

STATE	Entrance Fees	Camping Fees	Cabins/ Cottages	Lodges	Group Facilities
Alabama	6,530,858	13,686,974	4,878,301	3,780,474	272,486
Alaska	2,068,900	748,393	838,961	-	-
Arizona	10,828,339	8,423,653	-	-	71,607
Arkansas	1,373,403	6,836,024	5,220,040	4,010,046	237,990
California	45,185,194	29,307,994	-	-	-
Colorado	26,749,557	17,486,672	965,278	-	336,902
Connecticut	1,376,805	2,402,913	209,450	-	-
Delaware	5,489,821	5,585,635	1,534,256	-	32,216
Florida	29,509,265	20,056,923	3,891,149	-	258,108
Georgia	8,249,044	15,652,000	12,370,498	-	171,702
Hawaii	-	683,791	248,440	-	-
Idaho	6,421,100	5,702,000	1,607,000	-	-
Illinois	-	5,532,343	-	650,457	-
Indiana	15,553,484	22,335,273	1,996,619	15,130,886	207,793
Iowa	58,186	4,993,936	1,143,025	-	-
Kansas	4,648,355	8,152,466	2,217,587	-	3,956
Kentucky	-	9,627,955	-	-	-
Louisiana	1,383,636	4,248,386	4,683,690	330,995	316,486
Maine	4,362,884	722,820	-	-	-
Maryland	7,084,127	6,133,313	1,749,298	-	638,002
Massachusetts	-	-	-	-	-
Michigan	24,623,941	49,487,731	234,890	-	-
Minnesota	10,412,358	10,867,092	1,563,988	10,289	38,563
Mississippi	577,853	4,964,645	1,932,385	96,999	15,675
Missouri	-	9,842,929	-	-	-
Montana	398,524	1,747,492	82,928	-	-
Nebraska	8,393,933	9,329,053	8,575,273	-	-
Nevada	3,728,658	369,892	-	-	98,765
New Hampshire	11,292,232	6,400,000	-	-	720,312
New Jersey	1,315,239	1,578,895	-	-	-
New Mexico	1,608,260	1,645,690	-	-	-
New York	31,671,981	14,893,359	6,151,937	-	-
North Carolina	2,204,397	7,838,020	638,962	42,306	17,550
North Dakota	1,196,196	2,492,446	409,403	-	-
Ohio	-	22,919,759	6,332,139	-	-
<b>Oklahoma</b>	<b>203,176</b>	<b>8,236,443</b>	<b>4,563,528</b>	<b>4,833,755</b>	<b>-</b>
Oregon	5,487,551	23,274,426	-	3,389	-
Pennsylvania	-	17,102,514	6,329,930	921,543	342,083
Rhode Island	-	1,348,736	-	-	-
South Carolina	10,994,918	18,712,329	5,061,329	518,090	49,394
South Dakota	11,685,040	9,187,208	2,202,397	-	-
Tennessee	-	11,874,800	9,735,400	3,410,300	247,900
Texas	20,538,576	20,853,106	4,865,351	745,856	676,753
Utah	18,927,661	8,895,963	787,045	-	-
Vermont	1,303,491	3,728,394	119,101	2,050	-
Virginia	8,101,386	8,289,955	7,908,430	-	-
Washington	-	25,848,404	4,289,143	-	1,302
West Virginia	62,589	5,685,500	6,512,903	5,968,870	11,336
Wisconsin	16,872,651	12,719,134	-	-	-
Wyoming	2,680,198	2,151,675	190,791	-	46,385
Average	9,278,844	10,420,511	3,390,023	2,528,519	209,272

**Table 5E: Financing – Revenue Sources**  
(page 14 of 19)

## Revenue Generated By Source

STATE	Restaurants	Concessions	Beaches/ Pools	Golf Courses	Other	Total Operations
Alabama	2,235,809	3,337,658	100,782	2,120,074	6,937,159	43,800,575
Alaska	-	-	-	-	1,350,800	5,007,054
Arizona	-	594,644	-	-	2,612,695	38,012,493
Arkansas	3,323,494	124,288	170,404	689,868	5,928,047	27,913,604
California	-	4,883,117	-	-	15,797,421	95,173,726
Colorado	-	3,634,582	-	-	75,397,196	124,570,187
Connecticut	-	30,364	-	-	-	38,012,493
Delaware	-	474,189	257,067	-	10,978,547	24,351,731
Florida	-	6,178,503	-	-	12,179,505	38,012,493
Georgia	66,585	5,829,086	739	2,285,033	6,034,217	50,658,904
Hawaii	-	-	-	-	-	38,012,493
Idaho	-	-	12,600	-	4,259,700	18,002,400
Illinois	85,902	975,394	20,864	-	-	-
Indiana	3,905,562	953,814	149,833	2,101,651	15,404,193	77,829,108
Iowa	-	78,735	-	-	1,013,470	7,287,352
Kansas	-	403,085	-	-	128,064	15,553,513
Kentucky	-	-	-	-	-	38,012,493
Louisiana	-	-	-	-	-	10,963,193
Maine	41,820	28,690	-	-	980,906	6,137,120
Maryland	-	1,280,841	-	-	-	38,012,493
Massachusetts	-	6,738,548	-	2,345,094	-	38,012,493
Michigan	-	1,740,041	-	-	2,836,541	78,923,144
Minnesota	163,514	-	-	-	-	38,012,493
Mississippi	-	354,224	304,644	-	102,555	8,348,980
Missouri	-	2,588,082	-	-	2,585,888	15,016,899
Montana	-	48,027	-	-	1,272,744	38,012,493
Nebraska	490,996	3,328,301	951,971	-	857,232	31,926,759
Nevada	76,961	-	-	-	4,710,254	8,984,530
New Hampshire	-	6,231,713	2,458,650	-	2,200,000	29,302,907
New Jersey	-	68,379	-	-	6,054,201	9,016,714
New Mexico	-	424,228	-	-	348,968	38,012,493
New York	-	11,517,646	2,183,537	16,320,620	6,183,107	88,922,188
North Carolina	61,252	1,430,234	53,497	-	3,344,304	38,012,493
North Dakota	-	1,176,439	-	-	1,309,514	38,012,493
Ohio	-	1,740,294	-	303,900	8,578,305	38,012,493
<b>Oklahoma</b>	<b>-</b>	<b>1,331,044</b>	<b>42,471</b>	<b>2,357,258</b>	<b>3,670,505</b>	<b>25,238,180</b>
Oregon	2,935	65,807	-	-	1,600,082	30,434,190
Pennsylvania	-	1,482,831	622,069	-	8,491,504	35,292,474
Rhode Island	-	778,262	1,828,219	340,160	195,307	38,012,493
South Carolina	156,412	6,732,373	-	310,180	7,901,429	38,012,493
South Dakota	-	3,341,272	-	-	-	38,012,493
Tennessee	2,074,700	-	2,657,900	8,366,500	12,804,900	38,012,493
Texas	182,143	3,991,675	-	-	1,373,240	38,012,493
Utah	-	1,678,812	-	3,381,631	-	38,012,493
Vermont	-	8,855	-	-	3,998,026	-
Virginia	161,280	4,125,586	466,331	-	3,816,773	32,708,461
Washington	-	478,086	-	-	33,249,747	63,866,683
West Virginia	1,931,499	68,134	349,550	931,881	6,934,289	38,012,493
Wisconsin	-	613,622	11,881	67,433	589,413	38,012,493
Wyoming	-	163,967	-	-	5,233,016	310,040
Average	935,054	2,167,940	665,422	2,994,377	7,231,094	36,745,895

**Table 5E: Financing – Revenue Sources**  
**(page 15 of 19)**  
**Explanatory Notes**

<b>STATE</b>	<b>NOTES</b>
Arizona	Campsite and Cabin revenue are combined in camping visitaiton.
Arkansas	Entrance fees is for park specific attractions and not for entry into the park
Colorado	Other includes revenue from registrations, licenses/passes/fees/permits, federal and state grants, lottery and Great Outdoors Colorado, donations, interest income, severance tax revenue, and other
Indiana	2020/21 inns portion of "all other operations" was \$7.57M. Parks portion was \$15.4M other operations (and resale).
Iowa	No revenue is reported for resort as it is under a concession operation and any revenue will be reflected in the concession revenue category. Other operations includes day-use lodge and shelter rental fees, special event fees, dock management area fees, dock slip rental, damage deposits, nonresident user permit fees, and reservation transaction fees.
Louisiana	Wave Pool did not open due to pandemic.
Missouri	Camping and lodging were closed from March 27, 2020 to May 17, 2020 due to the COVID-19 pandemic. Camping was open from May 18, 2020 to June 30, 2020 with a 50% occupancy limit.
New Jersey	Revenue for Camping Fees include revenue from cabin rentals. Concession Revenue includes restaurant revenue. Due to COVID not all leasees/concessions were fully operational reducing revenue generated from this source in FY21.
Ohio	Concessions and Golf Course revenues are only commission payments to Ohio State Parks received from the concessionaires, not actual revenue earned by the concessionaire.
<i>Oklahoma</i>	<i>FY19-20 data were used</i>
Oregon	Overnight includes cabins/yrurts but does not include Boat Moorage. Concession operations includes Boat Moorage (Agency Object 8630) Lodge Room: Wolf Creek Inn and Frenchglen (closed in winter) Restaurants: Wolf Creek Inn and Frenchglen (closed in winter).
Pennsylvania	Golf course revenue is included in concession operations. For 2021, Caledonia and Nockamixon State Park pools were closed due to a leak and difficulty in hiring trained lifeguard staff.
Rhode Island	Camping Fees Includes: Cabins - Beach/Pool: Parking Revenue For Our 8 Saltwater Beaches- Other Includes: Event Impact Fees, Lifeguard Certifications, Site Rentals Including Eisenhower House
South Dakota	Although South Dakota includes restaurants, marinas and lodges in the Facility Inventory in Table 2, we do not include the concessioners' revenue in Table 5E - Revenue Sources. South Dakota's revenue from concessioners' leases, franchise fees and other sources is included in the Concessions column of this table.
Tennessee	Beaches / Pools total reflects the marina operations
Washington	Washington State Parks does not charge entrance fees to park visitors. A \$10 day-use pass or \$30 annual Discover Pass is required to park passenger vehicles at State Parks and state recreational lands. For the report "Entrance Fees" is used to record the sales of day-use and annual parking passes. Revenue generated from these parking fees are placed in "other" column.

**Table 5F: Financing – Revenue Sources**  
(page 16 of 19)

STATE	Registration Fees						Real Estate Transfer Tax	Motor Vehicle Plates / Permits	Hunting Licenses/ Fines
	Park User & Entrance Fees & Permits	Motor Fuel Tax	Snow- mobiles	OHV's/ ATV's	Boats	Lottery			
Alabama	No	No	No	No	Yes	No	No	Yes	No
Alaska	Yes	No	No	No	No	No	No	No	No
Arizona	Yes	Yes	No	Yes	Yes	No	No	No	No
Arkansas	No	No	No	No	No	No	No	No	No
California	Yes	Yes	No	Yes	Yes	No	No	No	No
Colorado	Yes	Yes	Yes	Yes	Yes	Yes	No	Yes	No
Connecticut	No	No	No	No	No	No	No	Yes	No
Delaware	Yes	No	No	No	No	No	Yes	No	No
Florida	Yes	No	No	No	No	No	Yes	No	No
Georgia	Yes	No	No	No	No	No	No	No	No
Hawaii	Yes	No	No	No	No	No	No	Yes	No
Idaho	Yes	Yes	No	No	No	No	No	Yes	No
Illinois	Yes	Yes	Yes	Yes	Yes	No	No	Yes	Yes
Indiana	Yes	No	Yes	Yes	Yes	No	No	No	Yes
Iowa	Yes	Yes	Yes	Yes	Yes	Yes	No	Yes	No
Kansas	Yes	No	No	Yes	No	No	No	No	No
Kentucky	Yes	No	No	No	No	No	No	No	No
Louisiana	Yes	No	No	No	No	No	No	No	No
Maine	Yes	No	No	No	No	No	No	Yes	No
Maryland	Yes	No	No	Yes	No	No	Yes	No	No
Massachusetts	Yes	No	No	No	No	No	No	No	No
Michigan	Yes	No	No	Yes	No	No	No	No	No
Minnesota	Yes	Yes	Yes	Yes	Yes	Yes	No	Yes	No
Mississippi	Yes	No	No	No	No	No	No	No	No
Missouri	Yes	No	No	No	No	No	No	No	No
Montana	Yes	Yes	Yes	Yes	Yes	No	No	No	No
Nebraska	Yes	No	Yes	Yes	Yes	No	No	Yes	No
Nevada	Yes	Yes	No	No	No	No	No	No	No
New Hampshire	Yes	Yes	Yes	Yes	No	No	No	Yes	No
New Jersey	Yes	No	No	No	No	No	No	No	No
New Mexico	Yes	Yes	No	No	Yes	No	No	No	No
New York	Yes	No	Yes	No	Yes	No	Yes	No	No
North Carolina	Yes	Yes	No	No	No	No	Yes	Yes	No
North Dakota	Yes	Yes	Yes	Yes	No	No	No	No	No
Ohio	Yes	No	No	No	Yes	No	No	No	No
<i>Oklahoma</i>	<i>No</i>	<i>No</i>	<i>No</i>	<i>No</i>	<i>No</i>	<i>No</i>	<i>No</i>	<i>No</i>	<i>No</i>
Oregon	Yes	Yes	No	Yes	No	Yes	No	Yes	No
Pennsylvania	No	No	Yes	No	No	No	Yes	No	No
Rhode Island	Yes	No	No	No	No	No	No	No	No
South Carolina	Yes	No	No	No	No	No	No	No	No
South Dakota	Yes	Yes	Yes	No	No	No	No	No	No
Tennessee	No	No	No	No	No	No	Yes	Yes	No
Texas	Yes	No	No	Yes	No	No	No	Yes	No
Utah	Yes	Yes	Yes	Yes	Yes	No	No	No	No
Vermont	Yes	No	No	No	No	No	No	No	No
Virginia	Yes	No	No	No	No	No	No	Yes	No
Washington	No	Yes	Yes	Yes	Yes	No	No	Yes	No
West Virginia	Yes	No	No	No	No	Yes	No	No	No
Wisconsin	Yes	Yes	Yes	Yes	No	No	No	No	No
Wyoming	Yes	Yes	Yes	Yes	No	No	No	No	No
# Yes	43	19	16	20	15	5	7	17	2

**Table 5F: Financing – Revenue Sources**  
(page 17 of 19)

State Taxes/Fees Dedicated to Park & Recreation							
STATE	Employee Housing Payments	Lease Permits (Ski, Lake, Ag.)	Donations	Publications & Souvenir Sales	Concessionaires Licensing	Tobacco Products Tax	Sporting Goods Tax
Alabama	No	No	No	No	No	Yes	No
Alaska	Yes	No	No	No	No	No	No
Arizona	Yes	No	Yes	Yes	Yes	No	No
Arkansas	No	No	Yes	Yes	Yes	No	Yes
California	Yes	Yes	Yes	Yes	No	Yes	No
Colorado	Yes	Yes	Yes	Yes	Yes	No	No
Connecticut	No	No	No	No	No	No	No
Delaware	Yes	Yes	Yes	Yes	Yes	No	No
Florida	Yes	Yes	Yes	Yes	No	No	No
Georgia	No	Yes	Yes	Yes	Yes	No	No
Hawaii	No	No	Yes	Yes	Yes	No	No
Idaho	No	Yes	Yes	Yes	Yes	No	No
Illinois	Yes	Yes	Yes	No	Yes	No	Yes
Indiana	No	Yes	Yes	Yes	Yes	Yes	No
Iowa	No	Yes	Yes	No	Yes	No	No
Kansas	Yes	Yes	Yes	Yes	Yes	No	No
Kentucky	Yes	Yes	Yes	Yes	Yes	No	No
Louisiana	No	No	Yes	Yes	No	No	No
Maine	Yes	Yes	Yes	Yes	No	No	No
Maryland	Yes	Yes	Yes	Yes	Yes	No	No
Massachusetts	Yes	Yes	Yes	No	Yes	No	No
Michigan	Yes	Yes	Yes	Yes	Yes	No	No
Minnesota	Yes	No	Yes	Yes	Yes	No	Yes
Mississippi	No	Yes	No	No	No	No	No
Missouri	Yes	Yes	Yes	Yes	Yes	No	No
Montana	Yes	Yes	Yes	Yes	Yes	No	No
Nebraska	No	Yes	Yes	Yes	Yes	Yes	Yes
Nevada	No	No	Yes	Yes	Yes	No	No
New Hampshire	No	Yes	Yes	Yes	Yes	No	No
New Jersey	No	Yes	Yes	Yes	Yes	No	No
New Mexico	Yes	Yes	Yes	No	Yes	No	No
New York	Yes	Yes	Yes	No	Yes	No	No
North Carolina	Yes	No	Yes	Yes	Yes	No	No
North Dakota	Yes	Yes	Yes	Yes	Yes	No	No
Ohio	No	Yes	Yes	Yes	Yes	No	No
<i>Oklahoma</i>	<i>Yes</i>	<i>No</i>	<i>Yes</i>	<i>Yes</i>	<i>Yes</i>	<i>No</i>	<i>No</i>
Oregon	Yes	Yes	Yes	Yes	Yes	No	No
Pennsylvania	No	No	Yes	No	Yes	No	No
Rhode Island	No	No	Yes	No	No	No	No
South Carolina	No	No	Yes	Yes	Yes	No	No
South Dakota	Yes	Yes	Yes	Yes	Yes	No	Yes
Tennessee	Yes	Yes	Yes	Yes	Yes	No	No
Texas	Yes	Yes	Yes	Yes	Yes	No	Yes
Utah	No	No	Yes	Yes	Yes	No	No
Vermont	No	Yes	Yes	Yes	Yes	No	No
Virginia	Yes	Yes	Yes	No	Yes	No	No
Washington	Yes	Yes	Yes	Yes	Yes	No	No
West Virginia	Yes	No	Yes	Yes	Yes	No	No
Wisconsin	Yes	Yes	Yes	Yes	Yes	No	No
Wyoming	Yes	Yes	Yes	Yes	Yes	No	No
# Yes	30	34	46	37	41	4	6

**Table 5F: Financing – Revenue Sources**  
(page 18 of 19)

State Taxes/Fees Dedicated to Park & Recreation

STATE	Petroleum	Sales Tax	Investment	State Land	Other	General
	Products			Board		
	Tax	Tourism	Interest	Trusts		
Alabama	No	No	No	No	Yes	No
Alaska	No	No	No	No	Yes	Yes
Arizona	No	No	Yes	No	Yes	No
Arkansas	Yes	No	Yes	Yes	Yes	No
California	Yes	No	Yes	No	No	Yes
Colorado	Yes	No	Yes	Yes	Yes	Yes
Connecticut	No	No	No	No	Yes	Yes
Delaware	No	No	Yes	No	No	Yes
Florida	No	No	Yes	No	No	Yes
Georgia	No	Yes	No	No	Yes	Yes
Hawaii	No	Yes	Yes	No	Yes	Yes
Idaho	No	No	Yes	No	No	Yes
Illinois	No	Yes	No	No	No	Yes
Indiana	No	Yes	Yes	No	No	Yes
Iowa	No	No	No	No	No	Yes
Kansas	No	No	No	No	Yes	No
Kentucky	No	No	No	No	No	Yes
Louisiana	No	No	No	No	Yes	No
Maine	No	No	Yes	No	No	Yes
Maryland	No	No	No	No	No	Yes
Massachusetts	No	No	No	No	Yes	Yes
Michigan	No	No	Yes	No	Yes	Yes
Minnesota	No	No	No	No	Yes	Yes
Mississippi	No	No	Yes	No	No	Yes
Missouri	No	No	Yes	No	Yes	No
Montana	No	Yes	Yes	No	No	No
Nebraska	No	Yes	Yes	No	No	Yes
Nevada	No	No	No	No	No	Yes
New Hampshire	No	No	No	No	No	Yes
New Jersey	No	No	No	No	No	Yes
New Mexico	No	No	No	No	No	Yes
New York	No	No	No	No	No	Yes
North Carolina	Yes	No	No	Yes	Yes	Yes
North Dakota	No	No	No	No	No	Yes
Ohio	No	No	No	No	No	Yes
<i>Oklahoma</i>	<i>No</i>	<i>No</i>	<i>No</i>	<i>No</i>	<i>No</i>	<i>Yes</i>
Oregon	No	No	Yes	No	Yes	No
Pennsylvania	No	No	No	No	Yes	Yes
Rhode Island	No	No	No	No	No	Yes
South Carolina	No	No	No	No	Yes	Yes
South Dakota	Yes	Yes	No	No	Yes	Yes
Tennessee	No	No	No	No	No	Yes
Texas	No	No	No	No	Yes	Yes
Utah	No	No	No	No	No	Yes
Vermont	No	No	No	No	No	Yes
Virginia	No	No	No	No	No	Yes
Washington	No	No	No	No	Yes	Yes
West Virginia	No	No	No	No	No	Yes
Wisconsin	No	No	No	No	No	No
Wyoming	No	No	No	No	Yes	Yes
# Yes	5	7	16	3	22	41

**Table 5F: Financing – Revenue Sources**  
**(page 19 of 19)**  
**Explanatory Notes**

<b>STATE</b>	<b>NOTES</b>
Connecticut	Passport to the Park Program implemented in 2018 (motor vehicle registration fee)
Indiana	2020/2021 pools closed in 2020 due to Covid protocols. Some opened late in 2021 due to lifeguard staffing. Two closed for good in 2020 - Harmonie/Mounds so revenue was down in this area.
Iowa	Snowmobile and vehicle plate revenue is very minimal to overall park funding
Kansas	The Park Passport is available to purchase at the Motor Vehicle Office at a reduced fee. It is a discounted permit and have to opt in to get it. Employee housing payments at Hillsdale SP.
Missouri	"Other" consists of endowment funds.
New Hampshire	The Bureau of Historic Sites and a portion of the Development, Design & Maintenance Office are partially funded through the State's General Fund account.
Ohio	While Ohio doesn't charge an entrance fee, we do have some permit fees (i.e. camping permits, special activity permits) that are dedicated sources of funding for Ohio State Parks.
<i>Oklahoma</i>	<i>FY19-20 data were used</i>
Oregon	Other dedicated funds include firewood and ice sales, and rentals of bicycles, kayaks, etc. A portion of timber sales are included in other dedicated funds.
Rhode Island	Park User Fees & Permits: Special Use/Event Permits & Site Rentals
Texas	Motor Vehicle Plates funds are specialty license plate sales only.



**Table 6A: Personnel – Number of Positions  
(page 1 of 9)**

The number of staff positions is reported in this table by three categories: (1) whether they are full-time, part-time (regular year-around staffers that work less than a full forty-hour week) or seasonal (those individuals hired for temporary service during peak-use seasons) employees; (2) whether they work in the central office or in the field and (3) whether they are regarded as “park professionals” (those employees engaged primarily in work specialized to the needs of state parks) or not (those doing non-park-specialized work, such as clerical, fiscal, legal, etc. States that provided “0” or no data are excluded from averages.

STATE	Park Professional			Other Staff		
	Full-Time	Part-Time	Seasonal	Full-Time	Part-Time	Seasonal
Alabama	16	2	-	-	-	-
Alaska	35	9	18	9	-	13
Arizona	12	1	-	48	-	2
Arkansas	16	-	-	84	1	-
California	554	5	-	-	-	-
Colorado	30	-	-	35	-	49
Connecticut	10	-	-	1	-	-
Delaware	29	-	-	3	47	40
Florida	67	-	-	12	43	-
Georgia	3	-	-	38	8	-
Hawaii	14	-	-	5	-	-
Idaho	15	-	18	43	3	-
Illinois	8	-	-	3	-	-
Indiana	17	1	-	6	-	3
Iowa	6	-	-	2	-	-
Kansas	4	-	-	-	-	-
Kentucky	50	-	-	-	-	-
Louisiana	8	-	-	28	10	-
Maine	11	-	-	3	-	1
Maryland	20	-	-	-	-	-
Massachusetts	90	5	22	20	9	100
Michigan	22	-	-	80	-	-
Minnesota	80	8	-	6	-	-
Mississippi	5	-	-	7	-	-
Missouri	96	-	-	13	-	3
Montana	14	-	-	1	1	-
Nebraska	4	-	-	6	-	3
Nevada	19	-	-	10	-	2
New Hampshire	19	2	-	9	-	-
New Jersey	-	-	-	-	-	174
New Mexico	13	-	1	16	-	-
New York	17	-	-	260	-	69
North Carolina	35	-	-	16	-	11
North Dakota	19	-	5	-	-	-
Ohio	20	-	8	40	1	-
<i>Oklahoma</i>	<i>9</i>	<i>-</i>	<i>-</i>	<i>14</i>	<i>-</i>	<i>-</i>
Oregon	18	-	-	85	-	-
Pennsylvania	37	-	-	9	-	-
Rhode Island	31	-	-	22	-	-
South Carolina	18	6	-	-	-	-
South Dakota	11	-	-	1	-	-
Tennessee	59	-	-	67	-	-
Texas	110	1	-	50	7	9
Utah	18	-	-	13	-	-
Vermont	6	-	-	4	-	-
Virginia	8	10	-	16	21	-
Washington	45	-	-	157	3	29
West Virginia	7	-	-	10	3	-
Wisconsin	39	1	-	-	-	-
Wyoming	15	-	-	8	1	2
Total	1,809	51	72	1,260	158	510
Average	37	4	12	31	11	32

**Table 6A: Personnel – Number of Positions**  
(page 2 of 9)

STATE	Field Positions			Other Staff		
	Full-Time	Part-Time	Seasonal	Full-Time	Part-Time	Seasonal
Alabama	50	-	-	202	-	247
Alaska	18	13	1	18	-	-
Arizona	144	-	18	38	-	-
Arkansas	151	8	8	429	339	585
California	401	21	1,416	-	-	-
Colorado	211	1	574	-	-	-
Connecticut	72	-	352	-	-	6
Delaware	117	116	419	17	-	-
Florida	830	410	114	125	19	-
Georgia	247	488	18	14	7	-
Hawaii	97	-	-	5	-	-
Idaho	83	4	317	18	4	72
Illinois	372	-	-	53	-	-
Indiana	353	20	34	-	-	1,160
Iowa	103	-	329	-	-	-
Kansas	116	112	170	-	-	-
Kentucky	329	4	766	20	-	89
Louisiana	41	-	-	240	146	47
Maine	35	-	238	3	-	-
Maryland	214	-	606	-	-	-
Massachusetts	376	-	1,433	30	-	-
Michigan	233	45	209	-	20	1,182
Minnesota	168	195	481	52	22	13
Mississippi	142	28	92	9	-	-
Missouri	376	2	125	43	1	-
Montana	50	31	115	-	-	-
Nebraska	45	-	23	96	-	785
Nevada	62	-	132	42	-	11
New Hampshire	59	2	692	-	-	-
New Jersey	-	-	841	-	-	-
New Mexico	160	-	45	-	-	-
New York	44	-	-	1,779	-	4,418
North Carolina	345	-	705	56	-	52
North Dakota	38	1	170	-	-	-
Ohio	441	121	589	-	-	-
<i>Oklahoma</i>	<i>308</i>	<i>240</i>	<i>-</i>	<i>-</i>	<i>-</i>	<i>-</i>
Oregon	261	7	329	-	-	-
Pennsylvania	103	-	7	433	-	-
Rhode Island	-	-	437	-	-	-
South Carolina	130	89	-	137	325	-
South Dakota	123	4	-	-	-	-
Tennessee	666	241	59	245	141	59
Texas	1,041	119	43	82	1	-
Utah	162	-	490	-	-	-
Vermont	41	-	257	-	-	2
Virginia	221	-	-	-	-	-
Washington	361	6	497	35	1	3
West Virginia	72	-	-	351	746	266
Wisconsin	142	-	460	-	-	-
Wyoming	66	7	189	-	-	-
Total	10,220	2,335	13,800	4,572	1,772	8,997
Average	213	86	345	169	136	529

**Table 6A: Personnel – Number of Positions**  
(page 3 of 9)

Total Personnel Positions						
STATE	Full-Time	Part-Time	Seasonal	Grand Total	No. Wearing Uniforms	No. of Divisions
Alabama	252	247	311	810	797	5
Alaska	82	19	33	134	30	1
Arizona	261	1	3	265	187	3
Arkansas	680	348	593	1,621	151	6
California	1,490	-	1,416	2,906	-	18
Colorado	276	1	623	900	-	4
Connecticut	83	-	352	435	23	2
Delaware	167	163	459	789	97	3
Florida	1,034	472	114	1,620	952	5
Georgia	306	513	19	838	773	6
Hawaii	127	-	-	127	4	4
Idaho	159	6	317	482	371	2
Illinois	426	-	-	426	-	3
Indiana	375	21	1,198	1,594	348	2
Iowa	110	-	329	439	86	5
Kansas	116	112	170	398	58	4
Kentucky	594	4	1,463	2,061	-	-
Louisiana	317	156	47	520	474	3
Maine	54	-	239	293	270	3
Maryland	238	-	606	844	205	4
Massachusetts	320	13	1,695	2,028	2,000	5
Michigan	335	65	1,391	1,791	-	-
Minnesota	306	225	494	1,025	140	4
Mississippi	163	28	92	283	205	4
Missouri	528	3	128	659	47	3
Montana	65	32	115	212	-	-
Nebraska	151	-	811	962	135	7
Nevada	133	-	145	278	230	3
New Hampshire	87	4	692	783	783	5
New Jersey	299	-	841	1,140	-	-
New Mexico	190	-	46	236	165	5
New York	2,100	-	4,487	6,587	4,900	11
North Carolina	452	-	768	1,220	820	4
North Dakota	57	1	195	253	200	3
Ohio	501	122	597	1,220	182	6
Oklahoma	330	240	-	570	602	1
Oregon	364	7	329	700	329	3
Pennsylvania	589	-	899	1,488	507	4
Rhode Island	53	-	437	490	482	-
South Carolina	285	420	-	705	687	4
South Dakota	138	4	647	789	127	-
Tennessee	1,037	382	59	1,478	278	6
Texas	1,233	128	52	1,413	1,153	6
Utah	193	2	493	688	667	1
Vermont	51	-	259	310	298	4
Virginia	-	-	-	-	-	-
Washington	598	10	529	1,137	726	3
West Virginia	440	749	266	1,455	1,350	3
Wisconsin	181	1	460	642	610	-
Wyoming	91	6	191	288	274	4
Total	18,417	4,505	25,410	48,332	22,723	182
Average	376	137	565	986	541	4

**Table 6A: Personnel – Number of Positions  
(page 4 of 9)**

STATE	Administrative Support			Rangers		
	Full-Time	Part-Time	Seasonal	Full-Time	Part-Time	Seasonal
Alabama	32	-	-	16	-	-
Alaska	11	-	2	23	-	-
Arizona	3	-	-	144	-	18
Arkansas	107	9	9	23	12	-
California	802	67	14	485	5	-
Colorado	36	-	-	114	-	-
Connecticut	2	-	3	23	-	-
Delaware	35	31	105	20	21	50
Florida	98	19	-	593	410	114
Georgia	59	15	-	86	25	-
Hawaii	28	-	-	4	-	-
Idaho	8	4	76	48	1	57
Illinois	36	-	-	15	-	-
Indiana	51	17	1,198	95	-	-
Iowa	5	-	-	69	-	-
Kansas	26	-	20	59	-	25
Kentucky	25	-	80	43	-	13
Louisiana	134	61	10	24	-	-
Maine	4	-	57	10	-	118
Maryland	20	-	10	105	-	82
Massachusetts	43	2	58	62	-	57
Michigan	27	34	1	128	10	202
Minnesota	41	15	9	90	7	1
Mississippi	48	-	-	4	-	-
Missouri	27	2	7	45	-	-
Montana	-	4	-	34	10	22
Nebraska	38	-	14	72	-	23
Nevada	17	-	2	51	-	123
New Hampshire	9	4	10	22	-	76
New Jersey	-	-	121	83	-	195
New Mexico	35	-	3	79	-	-
New York	172	-	55	193	-	116
North Carolina	60	-	47	229	-	7
North Dakota	4	-	5	9	-	3
Ohio	41	15	14	126	-	-
<i>Oklahoma</i>	<i>46</i>	<i>28</i>	<i>-</i>	<i>43</i>	<i>11</i>	<i>-</i>
Oregon	65	7	-	186	-	39
Pennsylvania	78	-	77	62	-	93
Rhode Island	-	-	-	-	-	-
South Carolina	29	211	-	130	89	-
South Dakota	15	-	-	-	-	-
Tennessee	212	50	-	238	-	-
Texas	309	76	2	137	-	-
Utah	15	1	3	67	-	-
Vermont	4	-	-	2	-	104
Virginia	-	-	-	-	-	-
Washington	32	4	1	188	-	23
West Virginia	77	28	109	2	-	-
Wisconsin	13	1	179	54	-	-
Wyoming	13	2	2	4	-	25
Total	2,992	707	2,303	4,339	601	1,586
Average	66	28	72	92	55	66

**Table 6A: Personnel – Number of Positions**  
(page 5 of 9)

STATE	Maintenance Workers			Interpreter/Naturalist		
	Full-Time	Part-Time	Seasonal	Full-Time	Part-Time	Seasonal
Alabama	35	68	75	8	-	-
Alaska	6	-	1	-	-	33
Arizona	10	-	-	-	-	-
Arkansas	195	150	144	45	16	10
California	541	6	779	211	2	85
Colorado	61	-	-	-	-	-
Connecticut	45	-	352	1	-	10
Delaware	46	35	75	14	28	61
Florida	27	-	-	237	-	-
Georgia	69	113	-	28	22	-
Hawaii	91	-	-	4	-	-
Idaho	7	1	172	1	4	42
Illinois	356	-	-	29	-	-
Indiana	208	1	-	21	3	-
Iowa	27	-	329	1	-	-
Kansas	14	-	123	2	-	10
Kentucky	126	-	515	1	-	-
Louisiana	133	70	37	26	25	-
Maine	8	-	-	1	-	-
Maryland	37	-	178	-	-	20
Massachusetts	170	-	413	13	-	70
Michigan	6	-	-	-	-	-
Minnesota	38	73	211	24	4	8
Mississippi	27	6	9	-	-	-
Missouri	87	-	129	46	1	1
Montana	18	14	70	-	-	-
Nebraska	38	-	758	3	-	16
Nevada	29	-	11	8	-	-
New Hampshire	36	-	600	-	-	19
New Jersey	-	-	279	-	-	72
New Mexico	70	-	46	5	-	-
New York	812	-	3,224	50	-	-
North Carolina	148	-	498	10	-	17
North Dakota	9	-	2	1	-	3
Ohio	107	57	340	7	12	23
<b>Oklahoma</b>	<b>105</b>	<b>87</b>	<b>-</b>	<b>8</b>	<b>7</b>	<b>-</b>
Oregon	-	-	260	10	-	-
Pennsylvania	266	-	328	46	-	67
Rhode Island	-	-	-	-	-	-
South Carolina	89	91	-	19	23	-
South Dakota	50	-	-	3	-	-
Tennessee	456	270	59	5	62	-
Texas	386	28	31	72	2	-
Utah	37	-	98	-	-	-
Vermont	20	-	225	-	-	16
Virginia	-	-	-	-	-	-
Washington	158	3	463	18	-	13
West Virginia	187	691	146	8	-	-
Wisconsin	3	-	78	3	-	22
Wyoming	23	2	112	2	-	32
<b>Total</b>	<b>5,417</b>	<b>1,766</b>	<b>11,170</b>	<b>991</b>	<b>211</b>	<b>650</b>
<b>Average</b>	<b>118</b>	<b>93</b>	<b>310</b>	<b>27</b>	<b>15</b>	<b>30</b>

**Table 6B: Personnel – Salaries**  
**(page 6 of 9)**

STATE	Per Annum Salary Range					
	Field Unit Employees		Field Unit Manager		Field Supervisor	
	Min	Max	Min	Max	Min	Max
Alabama	19,881	29,496	35,985	66,331	50,712	89,479
Alaska	34,903	96,513	86,549	117,796	86,549	117,796
Arizona	25,508	55,763	49,962	71,564	65,161	77,469
Arkansas	22,000	52,425	26,034	81,257	62,531	90,670
California	3,439	4,523	112,532	140,388	44,828	133,149
Colorado	41,400	75,240	59,400	131,508	91,704	148,620
Connecticut	39,915	67,941	65,140	112,609	90,002	120,982
Delaware	26,309	39,463	45,202	67,804	51,755	77,633
Florida	19,200	55,771	29,344	96,133	45,173	117,496
Georgia	20,904	57,699	32,418	63,496	53,337	103,484
Hawaii	38,832	49,080	57,144	57,144	68,364	101,244
Idaho	41,226	73,549	52,582	93,933	68,848	122,949
Illinois	44,040	61,104	59,100	109,200	52,000	153,000
Indiana	28,366	52,416	47,320	123,812	41,574	137,514
Iowa	37,149	82,056	47,736	72,509	69,867	107,432
Kansas	57,438	60,346	63,331	66,538	69,919	73,459
Kentucky	18,090	51,269	38,770	68,234	27,852	47,222
Louisiana	22,152	76,814	39,603	95,493	45,822	109,325
Maine	31,200	39,707	33,238	64,501	56,722	82,680
Maryland	33,148	71,606	61,725	99,103	54,279	92,897
Massachusetts	35,156	45,600	47,096	64,137	66,023	80,000
Michigan	10,400	46,342	48,526	76,253	61,506	91,728
Minnesota	28,907	37,804	94,783	102,014	102,014	113,245
Mississippi	15,888	20,943	20,943	56,912	45,155	61,071
Missouri	13,926	50,025	47,008	65,163	38,752	50,025
Montana	51,594	51,594	76,236	51,594	76,236	89,178
Nebraska	18,720	31,905	39,195	80,906	60,880	86,973
Nevada	38,314	79,719	49,151	87,320	61,011	100,161
New Hampshire	32,240	44,075	36,127	54,080	44,075	61,818
New Jersey	28,484	73,926	62,645	117,772	116,470	125,108
New Mexico	26,229	50,045	58,136	69,034	58,136	88,525
New York	29,379	47,028	60,219	97,268	114,398	144,369
North Carolina	31,200	62,092	39,611	86,431	51,895	93,346
North Dakota	33,391	65,613	64,309	95,496	99,833	99,833
Ohio	37,253	41,018	70,075	100,048	77,001	109,990
<i>Oklahoma</i>	<i>28,460</i>	<i>44,004</i>	<i>38,780</i>	<i>60,000</i>	<i>29,298</i>	<i>44,607</i>
Oregon	41,208	51,720	77,232	110,352	121,728	134,016
Pennsylvania	32,176	70,416	89,780	119,512	78,612	152,275
Rhode Island	41,142	42,993	62,974	83,225	46,277	83,225
South Carolina	18,593	50,930	29,775	75,413	59,882	91,755
South Dakota	25,348	67,651	39,025	67,651	43,347	75,168
Tennessee	24,792	53,160	54,120	105,264	69,588	125,232
Texas	23,072	66,270	54,120	79,875	98,400	98,400
Utah	31,276	65,047	41,083	80,994	60,101	95,321
Vermont	4,453	15,494	11,969	27,551	43,732	95,418
Virginia	35,278	87,831	46,087	111,102	46,087	111,102
Washington	46,644	62,748	71,796	104,892	69,264	93,132
West Virginia	15,080	43,992	35,736	50,400	35,736	57,720
Wisconsin	26,499	64,051	39,653	91,123	60,401	99,630
Wyoming	48,637	75,212	53,149	89,812	63,465	107,245
Total	1,430,201	2,762,029	2,602,453	4,260,948	3,196,302	4,874,636
Average	29,382	55,241	52,049	85,219	63,926	99,282

**Table 6B: Personnel – Salaries**  
(page 7 of 9)

STATE	Operations Chief		Director	
	Min	Max	Min	Max
Alabama	61,661	103,637	83,004	139,661
Alaska	117,860	184,466	102,980	232,123
Arizona	65,161	117,992	103,130	215,520
Arkansas	69,776	101,175	10,810	147,200
California	177,780	177,780	180,086	180,086
Colorado	91,704	148,620	91,704	148,620
Connecticut	101,066	137,814	109,320	149,062
Delaware	67,840	101,760	95,150	142,724
Florida	60,662	155,880	54,229	132,670
Georgia	53,337	103,484	53,560	220,667
Hawaii	95,988	159,708	111,072	184,908
Idaho	84,074	150,155	94,286	168,418
Illinois	52,000	153,000	52,000	153,000
Indiana	41,574	137,514	41,574	137,514
Iowa	86,050	122,470	82,240	128,890
Kansas	77,085	80,988	85,290	89,607
Kentucky	86,851	91,854	116,802	118,800
Louisiana	59,446	116,979	63,606	143,312
Maine	77,563	105,914	84,427	135,179
Maryland	75,012	120,447	80,074	128,568
Massachusetts	105,560	105,560	129,000	129,000
Michigan	80,864	116,315	107,420	142,971
Minnesota	92,853	132,943	103,168	147,810
Mississippi	45,155	79,021	63,408	110,965
Missouri	93,627	93,627	114,433	114,433
Montana	89,178	89,179	95,412	95,412
Nebraska	84,507	120,726	70,354	100,499
Nevada	76,170	115,090	120,977	120,977
New Hampshire	54,350	96,824	77,609	108,149
New Jersey	123,210	123,210	130,000	135,252
New Mexico	58,136	101,150	53,557	132,557
New York	155,024	191,996	190,000	190,000
North Carolina	56,046	100,814	72,172	137,456
North Dakota	107,100	107,100	155,301	155,301
Ohio	54,974	161,512	73,715	207,646
<i>Oklahoma</i>	-	-	<i>72,000</i>	<i>91,000</i>
Oregon	-	-	182,100	182,100
Pennsylvania	78,612	136,411	116,871	159,121
Rhode Island	78,167	86,610	103,055	118,807
South Carolina	59,882	91,755	65,273	11,646
South Dakota	67,192	112,898	90,870	144,865
Tennessee	76,692	138,060	118,992	214,176
Texas	122,385	122,385	141,999	141,999
Utah	68,672	108,902	87,880	131,949
Vermont	78,185	78,185	108,669	108,669
Virginia	60,209	141,502	78,659	181,224
Washington	96,912	137,856	149,989	182,556
West Virginia	35,736	66,120	43,800	81,036
Wisconsin	60,401	99,630	66,724	111,702
Wyoming	82,814	128,062	108,061	167,104
Total	3,845,103	5,755,080	4,786,812	7,152,911
Average	80,106	119,897	95,736	143,058

**Table 6B: Personnel – Salaries**  
**(page 8 of 9)**

STATE	Per Annum Salary Range					
	Rangers		Maintenance Workers		Interpreters/Naturalists	
	Min	Max	Min	Max	Min	Max
Alabama	30,991	69,689	24,209	73,209	29,496	49,500
Alaska	71,643	166,675	43,348	122,453	3,240	7,774
Arizona	24,960	55,763	25,508	77,469	24,960	55,763
Arkansas	32,405	58,493	22,000	65,265	32,405	52,525
California	43,780	77,725	40,335	55,349	47,424	83,990
Colorado	41,400	86,952	33,528	84,408	41,400	75,240
Connecticut	65,140	112,609	39,915	67,940	54,794	118,897
Delaware	41,615	53,780	22,981	45,185	34,484	51,276
Florida	23,645	45,087	24,580	55,771	19,200	91,083
Georgia	29,399	63,469	20,696	34,803	27,793	63,469
Hawaii	38,832	49,080	45,540	51,240	33,120	80,112
Idaho	41,226	73,549	36,816	65,707	62,941	112,445
Illinois	44,112	62,964	40,908	70,115	39,456	81,840
Indiana	19,812	35,724	21,216	38,038	28,652	64,376
Iowa	54,600	82,056	37,149	54,392	47,736	72,509
Kansas	49,535	54,615	38,837	44,991	45,014	47,293
Kentucky	35,100	42,374	16,448	52,634	42,647	68,234
Louisiana	28,267	61,443	22,152	76,814	32,323	72,862
Maine	31,200	48,131	35,942	48,131	49,837	67,205
Maryland	39,768	71,606	33,148	71,606	39,768	71,606
Massachusetts	38,283	64,137	31,995	41,651	31,542	39,887
Michigan	37,294	58,594	35,256	58,594	45,136	69,243
Minnesota	52,486	77,202	34,954	48,651	42,734	62,031
Mississippi	21,791	34,898	14,450	47,842	-	-
Missouri	42,349	53,288	30,249	34,389	20,466	48,036
Montana	39,754	39,754	36,970	50,449	3,974	39,754
Nebraska	39,196	80,906	22,863	47,782	55,721	80,698
Nevada	38,314	79,719	31,403	83,394	49,151	72,871
New Hampshire	28,829	38,979	25,293	33,426	26,770	38,979
New Jersey	37,671	122,000	37,453	81,068	52,278	100,117
New Mexico	26,229	50,045	21,195	40,194	28,766	55,307
New York	39,982	73,523	29,379	55,223	34,606	98,372
North Carolina	33,960	62,092	31,200	86,431	36,677	72,424
North Dakota	48,960	63,649	53,966	65,541	60,086	60,086
Ohio	53,373	68,058	34,778	46,072	37,856	49,899
<b>Oklahoma</b>	<b>30,160</b>	<b>43,781</b>	<b>23,356</b>	<b>62,400</b>	<b>26,380</b>	<b>35,373</b>
Oregon	36,960	78,696	31,656	40,248	63,036	100,716
Pennsylvania	39,600	79,095	32,176	70,416	32,176	95,903
Rhode Island	-	-	-	-	-	-
South Carolina	24,471	50,930	20,109	61,975	25,451	61,975
South Dakota	39,025	67,651	31,090	50,738	35,767	62,014
Tennessee	36,636	74,796	36,636	74,796	26,016	45,924
Texas	53,244	99,000	29,507	57,101	38,007	43,624
Utah	33,108	52,467	32,065	69,737	33,108	52,469
Vermont	14,674	31,831	8,750	66,471	5,712	14,062
Virginia	27,004	70,017	27,004	70,017	27,004	70,017
Washington	41,352	74,604	61,224	70,956	31,344	56,856
West Virginia	19,392	35,892	15,080	25,536	19,382	39,892
Wisconsin	36,979	64,051	30,253	63,393	39,653	65,387
Wyoming	48,637	75,212	28,565	68,828	44,510	68,828
Total	1,847,143	3,236,651	1,504,132	2,928,839	1,709,998	3,088,743
Average	37,697	66,054	30,697	59,772	35,625	64,349



**Table 6C: Personnel – Employee Benefits  
(page 9 of 9)**

Insurance												
STATE	Life	Health	Dental	Eye Care	Sick Leave	Vacation Leave	Paid Holidays	Retirement	Housing Allowance	Utilities	Uniform	
Alabama	No	Yes	Yes	Yes	Yes	Yes	Yes	Yes	Yes	No	Yes	Yes
Alaska	Yes	Yes	Yes	Yes	Yes	Yes	Yes	Yes	Yes	Yes	Yes	Yes
Arizona	Yes	Yes	Yes	Yes	Yes	Yes	Yes	Yes	Yes	Yes	Yes	Yes
Arkansas	Yes	Yes	Yes	Yes	Yes	Yes	Yes	Yes	Yes	No	Yes	Yes
California	Yes	Yes	Yes	Yes	Yes	Yes	Yes	Yes	Yes	Yes	Yes	Yes
Colorado	Yes	Yes	Yes	Yes	Yes	Yes	Yes	Yes	Yes	Yes	Yes	Yes
Connecticut	Yes	Yes	Yes	Yes	Yes	Yes	Yes	Yes	No	No	No	Yes
Delaware	Yes	Yes	Yes	Yes	Yes	Yes	Yes	Yes	Yes	Yes	No	Yes
Florida	Yes	Yes	No	No	Yes	Yes	Yes	Yes	Yes	No	No	Yes
Georgia	Yes	Yes	Yes	Yes	Yes	Yes	Yes	Yes	Yes	No	No	Yes
Hawaii	Yes	Yes	Yes	Yes	Yes	Yes	Yes	Yes	No	No	No	Yes
Idaho	Yes	Yes	Yes	Yes	Yes	Yes	Yes	Yes	Yes	No	No	Yes
Illinois	Yes	Yes	Yes	Yes	Yes	Yes	Yes	Yes	Yes	No	Yes	Yes
Indiana	Yes	Yes	Yes	Yes	Yes	Yes	Yes	Yes	Yes	No	Yes	Yes
Iowa	Yes	Yes	Yes	Yes	Yes	Yes	Yes	Yes	Yes	No	No	Yes
Kansas	Yes	Yes	Yes	Yes	Yes	Yes	Yes	Yes	No	No	No	Yes
Kentucky	Yes	Yes	No	No	Yes	Yes	Yes	Yes	Yes	No	No	Yes
Louisiana	Yes	Yes	Yes	Yes	Yes	Yes	Yes	Yes	Yes	Yes	Yes	Yes
Maine	Yes	Yes	Yes	Yes	Yes	Yes	Yes	Yes	Yes	No	No	Yes
Maryland	Yes	Yes	Yes	Yes	Yes	Yes	Yes	Yes	No	No	No	Yes
Massachusetts	Yes	Yes	Yes	Yes	Yes	Yes	Yes	Yes	No	No	No	Yes
Michigan	Yes	Yes	Yes	Yes	Yes	Yes	Yes	Yes	No	No	No	Yes
Minnesota	Yes	Yes	Yes	Yes	Yes	Yes	Yes	Yes	Yes	No	No	Yes
Mississippi	Yes	Yes	Yes	Yes	Yes	Yes	Yes	Yes	Yes	No	Yes	Yes
Missouri	Yes	Yes	Yes	Yes	Yes	Yes	Yes	Yes	Yes	No	Yes	Yes
Montana	Yes	Yes	Yes	Yes	Yes	Yes	Yes	Yes	No	No	No	Yes
Nebraska	Yes	Yes	Yes	Yes	Yes	Yes	Yes	Yes	Yes	No	Yes	Yes
Nevada	Yes	Yes	Yes	Yes	Yes	Yes	Yes	Yes	Yes	No	No	Yes
New Hampshire	Yes	Yes	Yes	Yes	Yes	Yes	Yes	Yes	Yes	No	Yes	Yes
New Jersey	Yes	Yes	Yes	Yes	Yes	Yes	Yes	Yes	Yes	No	No	Yes
New Mexico	Yes	Yes	Yes	Yes	Yes	Yes	Yes	Yes	Yes	Yes	Yes	Yes
New York	Yes	Yes	Yes	Yes	Yes	Yes	Yes	Yes	Yes	No	No	Yes
North Carolina	Yes	Yes	Yes	Yes	Yes	Yes	Yes	Yes	Yes	No	No	Yes
North Dakota	Yes	Yes	Yes	Yes	Yes	Yes	Yes	Yes	Yes	No	No	Yes
Ohio	Yes	Yes	Yes	Yes	Yes	Yes	Yes	Yes	No	No	No	Yes
Oklahoma	Yes	Yes	Yes	Yes	Yes	Yes	Yes	Yes	Yes	No	Yes	Yes
Oregon	Yes	Yes	Yes	Yes	Yes	Yes	Yes	Yes	Yes	Yes	Yes	Yes
Pennsylvania	Yes	Yes	Yes	Yes	Yes	Yes	Yes	Yes	Yes	No	Yes	Yes
Rhode Island	Yes	Yes	Yes	Yes	Yes	Yes	Yes	Yes	No	No	No	Yes
South Carolina	Yes	Yes	Yes	Yes	Yes	Yes	Yes	Yes	Yes	No	Yes	Yes
South Dakota	Yes	Yes	Yes	Yes	Yes	Yes	Yes	Yes	Yes	No	No	Yes
Tennessee	Yes	Yes	Yes	Yes	Yes	Yes	Yes	Yes	No	No	No	Yes
Texas	Yes	Yes	Yes	Yes	Yes	Yes	Yes	Yes	Yes	No	Yes	Yes
Utah	Yes	Yes	Yes	Yes	Yes	Yes	Yes	Yes	Yes	No	Yes	Yes
Vermont	Yes	Yes	Yes	Yes	Yes	Yes	Yes	Yes	No	No	No	Yes
Virginia	Yes	Yes	Yes	Yes	Yes	Yes	Yes	Yes	Yes	No	Yes	Yes
Washington	Yes	Yes	Yes	Yes	Yes	Yes	Yes	Yes	Yes	Yes	Yes	Yes
West Virginia	Yes	Yes	No	No	Yes	Yes	Yes	Yes	Yes	Yes	Yes	Yes
Wisconsin	Yes	Yes	Yes	Yes	Yes	Yes	Yes	Yes	Yes	No	No	Yes
Wyoming	Yes	Yes	Yes	Yes	Yes	Yes	Yes	Yes	Yes	No	Yes	Yes
# Yes	49	50	47	47	50	50	50	50	39	10	24	50

STATE	NOTES
Illinois	Park Professionals include HQ Staff; Other Staff (F-H) include fiscal support at HQ
Iowa	Housing is being phased out
Nebraska	We consider the operations chief to be our deputy director and the director is our parks administrator
New Hampshire	COVID-19 had a large impact on the # of employees working in FY2021
Oklahoma	<i>FY19-20 data were used</i>
Rhode Island	437 out of total 490 available positions were filled in this period ; Unclear as to how last report's salaries were determined. This year's report utilized the Classified Annual Salaries Schedule Effective 6.21.20 DOA/ Div of HR website; Used past years notes as to which positions fell under Field Unit, Field Unit Manager, Field Unit Supervisor, Ops Chief, Director
Virginia	Only full time receive benefits including insurance and leave. All staff are provided uniforms. Only select rangers receive housing
Wisconsin	We have an incredibly wide range of classifications and paybands, so the salary aspect is rather broad.

**Table 7: Supporting Group  
(page 1 of 1)**

This table reports the presence and number of support groups and endowment funds for (1) a state park system and (2) individual state parks.

STATE	Support Groups			Endowment Funds		
	System Wide	Individual Park	How Many?	System Wide	Individual Park	How Many?
Alabama	Yes	Yes	18	No	No	-
Alaska	No	Yes	4	No	No	-
Arizona	Yes	Yes	17	No	No	-
Arkansas	No	Yes	13	No	No	-
California	Yes	Yes	8	No	Yes	3
Colorado	Yes	Yes	14	Yes	No	1
Connecticut	Yes	Yes	27	No	No	-
Delaware	No	Yes	15	Yes	Yes	25
Florida	Yes	Yes	83	Yes	Yes	10
Georgia	Yes	Yes	57	No	No	-
Hawaii	No	Yes	39	No	No	-
Idaho	Yes	Yes	3	No	Yes	3
Illinois	No	Yes	31	No	Yes	1
Indiana	Yes	Yes	21	No	No	3
Iowa	Yes	Yes	36	No	No	-
Kansas	Yes	Yes	22	No	No	-
Kentucky	Yes	Yes	20	Yes	No	-
Louisiana	No	Yes	10	No	No	-
Maine	Yes	Yes	10	No	Yes	4
Maryland	Yes	Yes	33	No	No	-
Massachusetts	Yes	Yes	110	No	No	-
Michigan	No	Yes	65	Yes	No	-
Minnesota	Yes	Yes	55	No	No	-
Mississippi	No	Yes	2	No	No	-
Missouri	Yes	Yes	15	No	Yes	4
Montana	Yes	Yes	10	No	No	-
Nebraska	Yes	Yes	7	No	No	-
Nevada	No	No	-	Yes	No	1
New Hampshire	Yes	Yes	34	No	Yes	1
New Jersey	No	Yes	31	No	No	-
New Mexico	No	Yes	22	No	No	-
New York	Yes	Yes	100	No	Yes	4
North Carolina	Yes	Yes	33	No	No	-
North Dakota	No	Yes	13	No	Yes	4
Ohio	Yes	Yes	60	Yes	No	-
<i>Oklahoma</i>	<i>No</i>	<i>Yes</i>	<i>27</i>	<i>No</i>	<i>No</i>	<i>-</i>
Oregon	Yes	Yes	11	Yes	Yes	5
Pennsylvania	Yes	Yes	49	Yes	Yes	1
Rhode Island	No	Yes	2	No	Yes	1
South Carolina	No	Yes	15	Yes	Yes	1
South Dakota	No	Yes	5	No	No	-
Tennessee	Yes	Yes	50	No	No	-
Texas	Yes	Yes	46	Yes	Yes	1
Utah	Yes	Yes	8	No	No	-
Vermont	Yes	Yes	3	Yes	No	-
Virginia	Yes	Yes	35	No	No	-
Washington	Yes	Yes	25	No	Yes	2
West Virginia	Yes	Yes	13	No	Yes	1
Wisconsin	Yes	Yes	64	Yes	Yes	20
Wyoming	No	Yes	12	No	No	-
Total	33	49	29	13	18	5

STATE	NOTES
New Hampshire	CLH endowments
<i>Oklahoma</i>	<i>FY19-20 data were used</i>
Rhode Island	Support Group/Endowment Fund-Fort Adams Trust; Support Group-Rocky Point Foundation
Texas	TPWD is only reporting 1 endowment as compared to the previous number of 5. This is because there is only one endowment fund reflected in our ledgers specifically for State Parks (SP), although it may stipulate use for specific sites.
Washington	Millersylvania and Beacon Rock State Parks have endowment funds from private sources. Washington State Parks have 25 individual parks support agreements and one is with Washington State Parks Foundation (501) (C) 3.

## Definitions

(last updated: July 1, 2013)

### **Table 1: Inventory**

Areas are individual units, or pieces of property, managed as part of the state park system.

The total acreage of a state park system includes water surface area only when the measured water bodies are wholly enclosed within the boundaries of a unit of the state park system.

An operational area is one that is open for regular use by the visiting public, and normally implies an appropriate level of development and staffing. State park inventories are reported in the following defined categories by the individual states:

State parks: Areas containing a number of coordinated programs for the preservation of natural and/or cultural resources and provision of a variety of outdoor recreation activities supported by those resources.

State recreation areas: Areas where a clear emphasis is placed on the provision of opportunities for primarily active recreation activities.

State natural areas: Areas where a clear emphasis is placed on protection, management and interpretation of natural resources or features.

State historical areas: Areas where a clear emphasis is placed on protection, management and interpretation of cultural, historical and/or archaeological resources or features.

State environmental education sites: Areas used exclusively or primarily for conducting educational programs on environmental subjects, natural resources, conservation, etc.

State scientific areas: Areas set aside exclusively or primarily for scientific study, observation and experimentation involving natural objects, processes and interrelationships; any other allowable uses are secondary and incidental.

State forests: Areas that, while under the direct administrative supervision and control of the state parks agency, are identified separately from the state park system and distinguished from state park units by having primarily a forest management and/or timber production role rather than a natural area and/or provision of recreation role.

State fish/wildlife areas: Areas under the administrative supervision and control of the state parks agency that are identified and managed primarily for the propagation and recreational taking of fish and/or game ("fishing and/or hunting areas").

State trails: Linear areas outside any other unit of the state park system that provide primarily for trail-type recreational activities (hiking, cycling, horseback riding, etc.) and normally do not contain any land areas large enough to support non-trail activities.

Other and Miscellaneous areas: *(These were combined for the first time with the 2001 AIX)* - Areas other than the above, that are considered special or significant enough in a particular state to warrant separate identification and treatment and/or areas that are not easily categorized or distinguished, or are not considered significant enough to warrant specification — "everything else". (As updated August, 2000)

## **Table 2: Facilities**

Facilities are artificial structures and improvements provided on state park areas and owned by the state to facilitate appropriate use of the parks by the visiting public. They can be either self-operated or concession- or lease-operated by private business. Facilities may also be included which are owned privately and operated by the state. Facilities which are neither state owned nor state operated should be excluded, regardless of whether access to such facilities crosses park lands or not. The AIX survey collects both the number of geographically separate state park areas offering facilities of a particular type and the total number of such facilities, broken down by year-around and seasonal availability. While these facilities take many forms for many different purposes, only a few have been selected for inclusion in this report. They are described and defined as follows.

Campsites, improved: A defined area (e.g., camping area, campground) with designated sites with access to electricity, running water and modern toilets, either through hook-ups or central facilities, or both. A camping area with multiple loops but one unified access is considered one ‘campsites area’. If a camping area contains both improved and primitive sites, the majority of the type of campsites should determine the area’s category. For example, if an area has 10 primitive sites and 3 improved sites, the area should be categorized as a ‘primitive’ camping area. Regardless the camping area category, the actual number of improved or primitive campsites should be correctly reported.

Campsites, primitive: A defined area (e.g., camping area, campground) with designated sites without access to utilities, other than primitive central restrooms (pit privies, holding tanks, etc.) and primitive water supply (pitcher pumps, etc.). A camping area or campground with multiple loops but one unified access is considered one ‘campsites area’. Refer to the preceding definition for camping areas with both improved and primitive sites.

Cabins/cottages: Individual, self-contained rental lodging units, usually free-standing, but possibly in multiple arrangements, such as duplexes or “townhouses”. These units are not included as part of a larger campground and typically do contain kitchens and indoor bathrooms. *If a state has questions about how their units fit this definition please call the NASPD Executive Director for further guidance.*

Lodges: Lodging facilities of varying size, but usually containing many rental units consisting primarily of sleeping rooms only, with either private or central bathrooms.

Lodge rooms: Independent sleeping rooms or suites within a lodge that may be rented by themselves.

Group sleeping facilities: Structures designed to be rented and/or used as sleeping quarters by identifiable groups, usually while conducting group programs in the park—“dormitories”.

Restaurants: Facilities for preparing and serving food for consumption on the premises (“eat in”) by individuals or groups on a pay-as-you-go basis, having a seating capacity of 25 people or more.

Golf courses: Any course containing at least nine regulation or “par 3” holes.

Marinas: Boat liveries containing multiple slips and providing at least some services (fuel, supplies, repairs, dry storage, etc.), as opposed to “docks” only.

Swimming pools: Swimming facilities of various sizes and shapes with an impermeable basin and a chemically treated, recirculating water supply, available for general public use with or without a separate fee. One or more swimming pool(s) in a managed area with a unified access road are considered as a swimming pools ‘area’, while the number of individual year-round and seasonable pools should be reported in separate columns.

Stables: Facilities for quartering horses for recreational use by the general public, either directly through rental of the horses themselves or indirectly through rental of the stalls.

Ski areas and runs: Record the number of ski areas (providing one or more runs). Individual year-round or seasonal “runs” or “trails” designated for independent concurrent use for downhill skiing are recorded separately.

### **Table 3: Visitation and Use**

Day use: A recreational outing by individuals arriving and departing the same day.

Overnight use: A recreational outing involving a stay overnight as an authorized part of the recreational experience—may be indoors (lodges, cabins, etc.) or outdoors (camping).

Fee areas: These are parks and other whole areas where entrance fees are charged and more reliable counts can be made. A “fee” area pertains to a whole area, and not to individual facilities or use areas within a park. Thus, users of campgrounds, swimming pools, etc., where a specific use charge is made would not be reported under “fee” areas unless there was also a general entrance fee for the park in which those facilities were located.

Non-fee areas: Parks and other whole areas where no general entrance fee is charged and attendance must be estimated or determined through other means—even though such parks and other similar areas contain facilities (such as campgrounds and swimming pools) that do require specific use charges.

Overnight visitation is also reported by the type of overnight accommodations used: campsites, cabins/cottages, lodges, group facilities and other.

The extent to which overnight accommodations are used is measured by “rental nights” and reported separately for campsites, cabins/cottages and lodge rooms.

Rental night: A “rental night” is a single night’s use of a single rental unit of a given overnight facility, regardless of the size of the party occupying that rental unit. Thus, a party occupying a campsite for a full week would represent seven “rental nights”.

### **Table 4: Capital Expenses**

Land acquisition is reported in two categories (1) by purchase with cash or equivalent value, (2) by other means (such as donations and transfers from other government programs).

New construction is reported as the total cost of all construction initiated during the year, whether completed during that year or not.

### **Table 5: Financing**

Operating expenditures (Table 5A): Includes only those expenditures for operation and maintenance of the state park system per se; excluded are other related expenditures for such things as grants-in-aid to other entities, debt service on bonds, etc.

Fixed capital expenditures (Table 5B): Includes only those expenditures for land acquisition, park construction, etc. “User fees” are reported by the means of collection: individual visitor, passenger vehicle, bus, vehicle parking, and annual passes. For each type of fee, the rate is stated for both state residents and non-residents, and the number of parks where such a fee is charged is noted.

% State Park Operating Budget (Table 5C): Includes funds from all sources, including general fund and other funds.

**Table 6: Personnel**

Salary ranges are reported for several general categories of personnel:

Field unit employee: Employee having broad public contact, interpretative, and park maintenance duties—e.g. a park ranger.

Field unit manager: Senior on-site employee; manages park, supervises subordinate personnel—e.g. a park superintendent.

Field supervisor: Oversees operation of a number of units in a given region—e.g. a district manager.

Operations chief: The one position responsible for direct day-to-day operation of the whole park system; normally the one to whom field supervisors report.

State park director: The one position responsible for overall direction of the state parks agency.

Ranger: employee with administrative, operational, management, and/or law enforcement responsibilities as their primary function. Employee may be involved with other activities such as routine maintenance or interpretation as additional duties.

Maintenance worker: employee with maintenance and upkeep being the primary responsibility.

Interpreter or naturalist: employee involved in the education of the public as their primary responsibility. Employee may be assigned other duties.